

**By Dr. H. J. Ralston**

**Editor, The California Chess Reporter**

It is with the greatest pleasure that we present Task No. 7. This problem has been especially composed for The San Francisco News by Mr. A. J. Fink, the internationally famous problem-composer of San Francisco, and many-time California State Chess Champion.

Mr. Fink's problems are famous for their great complexity, so we asked him to compose a "light" one as a starter.

### **Gross Is Winner**

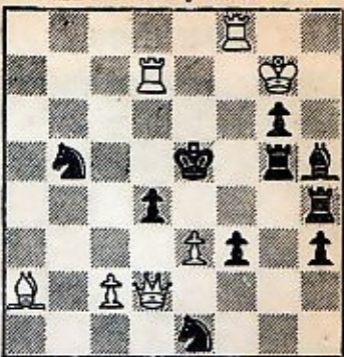
Henry Gross of San Francisco won the 1953-54 Northern California championship with a score of 7 points out of a possible nine. William Addison of San Francisco finished in second place with 6½ points. Then followed D. Poliakoff and R. Currie, both of San Francisco, with 6 points; V. Zemitis, Oakland, 5½; Phil Smith, M. Hailparn and T. Fries, all of Fresno, 5; R. Cuneo, Oakland, and Dr. Kenneth Colby, Mill Valley, 4½; P. Dahl, San Francisco, 4; S. Poulsen, Berkeley, and A. Chappell, Gilroy, 3½; J. Petriceks, Palo Alto, and H. Dasteel Jr., San Francisco, 3; D. Shishkin, San Francisco, 0.

Last week we mentioned that an 11-year-old boy, Larry Remlinger of Long Beach, gave promise of being California's newest and brightest chess star. Young Memlinger finished in eighth place, in a field of 24, in the national junior championship in Kansas City. Most of his opponents were five to nine years older than Remlinger. His performance has the chess world agog.

### **Open at San Jose**

The next important chess event in Northern California is the California State Open Championship, to be played at the Saint Claire Hotel in San Jose over the Labor Day holiday, Sept. 5-7. Friday night, Sept. 4, there will be a barbecue for players and friends in Alum Rock Park in San Jose. The tournament will consist of

Task No. 7—By A. J. Fink



**White Mates in Two Moves**  
 (Value 4 points)  
 Answer to Task No. 6: Q-R1

seven rounds, and will be sponsored by the California State Chess Federation, the San Jose Chess Club, and the San Jose Chamber of Commerce. The chamber of commerce is sending out extensive literature on the tournament to players throughout California.

**Many Prizes**

The tournament is open to all players. Entrance fee is \$5. We urge all chess players to participate if possible. Many prizes will be given. We guarantee you will enjoy yourself.

You may make your reservation directly with the Saint Claire Hotel, or you may write to the tournament director, W. G. McClain, Room 805, 544 Market-st, San Francisco 4.

Peter Prokoodin, president of the Russian Chess Club, Russian Center, 2450 Sutter-st, San Francisco, announces that the club will resume activity Saturday evening, Aug. 22. Imre Ko-

nig, international chess master, will give a simultaneous exhibition as part of the opening ceremonies. A minimum charge of 50c will be made for playing against Mr. Konig.

## Club Victory

Last winter the Russian Chess Club swept both the "A" and "B" divisions of the San Francisco Bay Area Chess League team matches.

The following brevity was played several years ago by two players whose names we have forgotten. The player of the whites pieces seems to know what he is about. The player of the black pieces—but the less said, the better.

### CENTER COUNTER

1. P-K4	P-Q4
2. PxP	QxP
3. Kt-QB3	Q-K4ch
4. B-K2	B-Kt5
5. P-Q4	BxB
6. KKtxB	Q-B3
7. Castles	Kt-Q2
8. Kt-K4	Q-KKt3
9. Q-Q3	R-Q1
10. Kt-B4	Q-Kt3
11. Kt-Q5	Q-R4
12. Q-Kt5!	Resigns

Black either loses his Queen or is mated. There is a moral to this.