

Events Dated For Bay Area Chess Players

Tournaments Set For S. F., Oakland

By Dr. H. J. Ralston

Many important chess events are scheduled for the coming months. We give below a chess calendar which you may find handy.

May 1-2: "Chess Friends" A, B and C tournaments, Oakland YMCA, 21st and Telegraph. Play will occur afternoons and evenings.

May 9: Semi-annual meeting of the San Francisco Bay Area Chess League, Hotel Cecil, 7 p. m. Representatives of member clubs should attend.

May 15: Annual team match between San Francisco and vicinity and all points east. Mechanics' Institute, 7:30 p. m. Everybody welcome. This is the big tune-up for the North-South match.

May 29-31: Twenty-first annual team match between Northern and Southern California, San Luis Obispo. Main match event will occur Sunday, May 30. This is the most important single event of the California Chess year.

June 29-July 9: United States Junior Championship, Lincoln Park Chess Club, Long Beach, Cal.

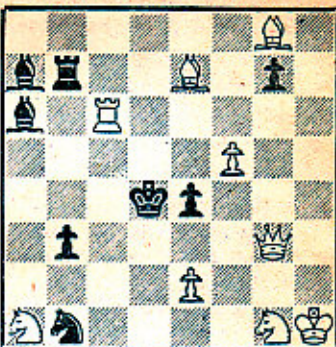
July 10-24: Pan-American Chess Congress, Hollywood Athletic Club. Six tournaments for players of all strengths. Handsome prizes. Special events. This is something you shouldn't miss! Entry fee of \$15 should be sent to 108 North Formosa Ave., Los Angeles 36.

Aug. 2-14: United States Open Championship, Roosevelt Hotel, New Orleans, La.

Sept. 4-6: California State Championship, San Francisco. At the same time, the California Open Championship will be played in Southern California, tentatively in Santa Barbara.

As will be seen from the above calendar, the coming chess season is going to be a very busy one, indeed.

It is not yet certain whether the usual Northern and Southern California Championship tournaments will be held this year. These tournaments serve as qualifying tournaments for determining eligibility to the State Championship tournament. It is possible that the results of the Pan-American tournaments in



White Mates in Two Moves
(Value five points)
Answer to Task No. 40: Q-K3

Hollywood will be used for such purpose.

The Russian Chess Club will visit San Quentin May 8 to play a match with the prison chess team. Any one wishing to participate should communicate with Peter Prokoodin, 3324 Washington-st. Males only!

We continue with games from the World Championship match between Botvinnik and Smyslov. After 12 games, the score was all tied up, 6-6!

No. 2—NIMZOINDIAN

White—Botvinnik		Black—Smyslov	
1 P-Q4	Kt-KB3	16 P-R5	R-K1
2 P-QB4	P-K3	17 Kt-Q6	R-K3
3 Kt-QB3	B-Kt5	18 P-Q5	RxKt
4 P-K3	P-QKt3	19 BxR	QxP
5 Kt-K2	B-R3	20 Q-B3	QxQP
6 P-QR3	B-K2	21 QxQ	PxQ
7 Kt-B4	P-Q4	22 R-B1	Kt-R3
8 PxP	BxB	23 P-Kt4	P-R3
9 KxB	PxP	24 R-R3	K-R2
10 P-KKt4!	P-B3	25 R-Q3	Kt-B3
11 P-Kt5	KKt-Q2	26 P-Kt5	Kt-B4
12 P-KR4	B-Q3	27 BxKt	PxB
13 P-K4	PxP	28 RxBP	R-QKt1
14 KtxP	BxKt	29 P-R4	R-Kt2
15 BxB	Castles	30 R/3-QB3	Resigns

No. 3—FRENCH DEFENSE

White—Smyslov		Black—Botvinnik	
1 P-K4	P-K3	22 Kt-R4	B-Kt3
2 P-Q4	P-Q4	23 B-Kt2	Kt-Kt3
3 Kt-QB3	B-Kt5	24 KtxKt	PxKt
4 P-K5	P-QB4	25 QR-K1	P-B4
5 P-QR3	B-R4	26 PxB	QxP
6 P-QKt4	PxQP	27 Q-K6ch	QxQ
7 Kt-Kt5	B-B2	28 RxQ	K-B2
8 P-KB4	Kt-K2	29 KR-K1	KR-K1
9 Kt-KB3	B-Q2	30 RxR	RxR
10 QKtQP	QKt-B3	31 RxR	KxR
11 P-B3	KtxKt	32 B-B3	K-Q2
12 PxB	Kt-B4	33 P-R5	B-Q1
13 B-K2	R-QB1	34 B-Kt4	P-Kt3
14 P-QR4	P-B3	35 P-R6	B-B3
15 Castles	Castles	36 B-B3	K-K3
16 P-KKt4	Kt-K2	37 K-Kt2	P-Kt4
17 B-Q3	Q-K1	38 B-K2	P-Kt3
18 P-QKt5	Kt-Kt3	39 B-Q1	B-K2
19 P-B5	Kt-K2	40 B-Q2	B-Q1
20 Q-K2	KPxP!	41 B-K3	Drawn
21 P-K6	PxP		

No. 4—QUEEN'S GAMBIT

White—Botvinnik		Black—Smyslov	
1 P-Q4	P-Q4	32 B-QB1	Kt-Q2
2 P-QB4	PxP	33 B-Kt2	R-K1
3 Kt-KB3	P-QR3	34 Q-B1	Q-R4
4 P-K3	B-Kt5	35 Q-Kt2	Q-R3
5 BxP	P-K3	36 R-Kt5	P-Kt3
6 Q-Kt3	BxKt	37 Q-B1	B-Kt2
7 PxB	P-QKt4	38 B-B1	B-B3
8 B-K2	Kt-Q2	39 R/5-Kt4	B-K2
9 P-QR4	P-Kt5	40 B-Q2	Kt-B3
10 Kt-Q2	KKt-B3	41 R/4-Kt2	R-Q2
11 Kt-K4	P-B4	42 BxRP	R-R2
12 KtxKtch	QxKt	43 B-Kt5	R-KKt1
13 P-Q5	P-K4	44 P-R6	P-Kt4
14 P-R5	B-Q3	45 Q-Q3	B-Q3
15 P-K4	O-O	46 Q-K2	R2-KKt2
16 B-K3	P-B5	47 Q-Q1	Q-R5
17 QxBP	KR-B1	48 B-K2	P-Kt5
18 Q-Kt3	Q-Kt3	49 B-K1	P-R4
19 K-B1	P-B4	50 PxB	PxP
20 R-KKt1	Q-R4	51 BxKKtP	RxB
21 R-Kt2	Kt-B4	52 P-B3	RxR
22 Q-Q1	Q-R5	53 BxQ	RxRch
23 K-Kt1	P-B5	54 QxR	RxQch
24 B-Q2	QR-Kt1	55 KxR	Kt-K1
25 K-R1	R-B1	56 P-R7	Kt-B2
26 B-B4	R-B3	57 K-B1	K-K2
27 Q-KKt1	B-B1	58 K-K2	K-B2
28 R-Kt4	Q-R4	59 B-B2	K-K1
30 P-Kt3	Q-B2	60 K-Q3	K-Q2
31 R-KKt1	K-R1	61 K-B4	Resigns
29 Q-Kt2	R-Q3		