

Christmas Chess Problems Answered; New Task Presented

By Dr. H. J. Ralston

Answers to Christmas problems: (A) Kt-B6 mate (B) R-B7 (C) 1. R-B3, PxR; 2. P-Kt8(Q), etc. (D) 1. Kt-B3, PxKt; 2. KxP, P-Kt5ch; 3. K-K4, etc.

We are pleased to present today Task No. 26, an original composition by J. L. Beale of Melbourne, Australia.

The four-mover by Dr. Erdos, published in this column two weeks ago, was tackled by 14 of our readers. Ten solvers were completely successful, and one partially correct.

The main line is: 1. Q-Q3, P-B4; 2. Kt-B3ch, K-R6; 3. Q-R6ch, K-Kt5; 4. Kt-Q5 mate.

The main beauty of this problem is the great economy of the mate in the main line.

Solutions Received

Correct solutions were received from John Beck, Paul Bercovici, Ray Bragg, Melvin De Boer, Wilber Leeds, Mission High School Chess Club, Alma Werthauer, all of San Francisco; Dr. D. E. Baldwin, Corte Madera; A. K. Bell, Palo Alto; Harry Hokensen, Santa Rosa, J. V. Powell of San Francisco found the correct key-move, but slipped up on the best defensive line by black.

Many of our readers have commented on the difficulty of Task No. 24, by D. T. Brock, and good-naturedly objected to the small value assigned to the problem. We did not realize the problem was so difficult. We must have been very lucky when we solved it ourselves, for it took us less than five minutes.

Several of our best solvers failed on No. 24, but solved the Dr. Erdos four-mover rather easily. We fooled around with the Erdos problem for about two hours before finding the main line. It all goes to show that the human brain is a rather peculiarly unpredictable organ.

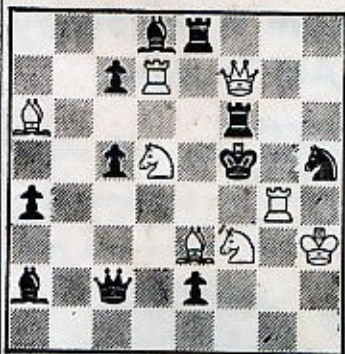
Information Wanted

We should much appreciate learning approximately how long it takes our solvers to solve each problem. We thank the several solvers who have already been giving us this information.

Please note that the address of the Hotel Cecil, where Samuel Reshevsky will give his simultaneous exhibition Feb. 6, is 545 Post-st. The address was incorrectly given in our last column.

We note that Reshevsky will also be seen in simultaneous play on Wednesday, Feb. 3, at 7:30 p.m., at the Richelieu Hotel, Van Ness and Geary. It is stated

TASK No. 26—By J. L. Beale



White Mates in Two Moves
(Value 4 points)

that reserved spectator tickets may be purchased for 50 cents from C. McGinley, 2763 Chelsea Drive, Oakland. It is not clearly stated what the fee is for playing against Reshevsky, or if such tickets are open to public sale.

Our good friend Peter Prokoidin of San Francisco sends us some clippings about Nick Preo, well-known chess player of Oakland. Preo has been proclaimed Correspondence Chess Champion of seven Western states—Oregon, Utah, Washington, Arizona, Nevada, Idaho and California—and will compete in the Grand National Finals when they are scheduled. Nick has been play-

ing chess for 40 years, and is just now getting really warmed up.

Tournament Game

The following game was played Dec. 12 in the Championship Tournament of the Russian Chess Club, Russian Center, San Francisco.

The player of the black pieces, Dr. Wrany, allows the winner, Miss Helen Ivanoff, to play P-K4 at her 9th move, after which her attack becomes irresistible. In Queen-pawn openings, it is essential that the player of the black pieces prevent white from making this move.

QUEEN PAWN

White—H. Ivanoff

Black—Dr. D. Wrany

- | | |
|-------------|----------|
| 1. P-Q4 | P-Q4 |
| 2. Kt-KB3 | P-K3 |
| 3. P-K3 | P-QB4 |
| 4. P-B3 | Kt-QB3 |
| 5. B-Q3 | Kt-B3 |
| 6. QKt-Q2 | P-B5? |
| 7. B-B2 | P-QKt4 |
| 8. Castles | B-K2 |
| 9. P-K4 | Castles |
| 10. P-K5 | Kt-Q2 |
| 11. R-K1 | P-QR4 |
| 12. Kt-B1 | P-R3? |
| 13. Kt-Kt3 | P-B4 |
| 14. PxPe.p. | KtxBP |
| 15. Kt-R4 | Kt-K5 |
| 16. Kt-Kt6 | KtxKBP |
| 17. Q-R5 | R-B2 |
| 18. R-B1 | Kt-R6ch |
| 19. PxKt | B-B3 |
| 20. Kt-K5 | R-QB2 |
| 21. Q-Kt6 | Kt-K2 |
| 22. Q-R7ch | K-B1 |
| 23. RxBch | K-K1 |
| 24. Q-R8ch | Kt-Kt1 |
| 25. QxKtch | K-K2 |
| 26. R-B7ch | Resigns. |

Miss Ivanoff's style at chess reminds one more of Rocky Marciano than of perfumed femininity. She crushes her masculine opponents with neatness and dispatch.

Jan. 1,
1954