

By Dr. H. J. Ralston

Morris Lowenthal, 850 Rockdale Drive, and Robert P. Willson, 3031 Laguna-st, are the first prize-winners on the chess problem ladder.

Task No. 19 proved to be a giant-killer, two of the top-rung solvers being deceived. This left only Lowenthal and Willson with perfect scores of 82 points.

In view of the fact that the awarding of a prize was overdue, we decided to split the \$20 in the jackpot between the two top men. It would be a shame, anyway, for two such sterling solvers to have to fight it out until one collapsed from sheer exhaustion.

Lowenthal and Willson now lose their accumulated points, and drop to the bottom of the ladder.

The problem in today's column, by Walter Grimshaw, was first published about a century ago. Grimshaw (1832-1890) was one of the greatest British composers of his century, and was also a very strong over-the-board player.

Howard Staunton, the distinguished English Shakespearean scholar and chess player, pronounced Task No. 21 the finest three-mover composed up to the time of its publication.

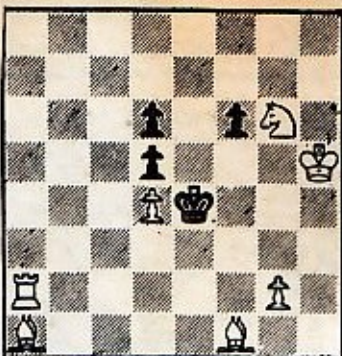
We feel sure that you will be delighted with the solution to the problem—if you find it!

The three-mover by Stamma, submitted by Francis Lewis of Eureka, and published in this column two weeks ago, was too easy, according to a number of our correspondents.

The solution is: 1. Kt-Kt4ch, RxKt; 2. R-B5ch, KxR; 3. R-Q5 mate.

Correct solutions were received from John Beck, Ray Bragg, Douglas John Gay, Mission High School Chess Club, J. V. Powell and Wesley Scott, all of San Francisco; Harry J. Wong, Watsonville; Dr. D. E. Baldwin,

TASK No. 21 — By W. Grimshaw



White Mates in Three Moves
(Value 7 points)

Answer to Task No. 20: R-KB6

Corte Madera; Harry Hokensen, Santa Rosa; Frank M. Bonds, San Bruno.

Sixteen players, representing eight chess clubs, attended the meeting of the San Francisco Bay Area Chess League last Sunday evening.

Team matches are scheduled to begin Jan. 9.

The "A" division will be composed of teams from the following clubs: Castle, Oakland, Golden Gate, Russian, Mechanics' Institute, and the University of California.

The "B" division will be composed of teams from Golden Gate, Oakland, Russian, Mechanics' Institute, Tower, Palo Alto and Kings chess clubs.

The following officers of the San Francisco Bay Area Chess League for 1953-54 were elected: President, Guthrie McClain; Vice-President, Walter Pafnutieff; Secretary-Treasurer, Robert Burger.

Everybody knows about the University of California football "Wonder Team," but few know that there was also a U. C. chess Wonder Team, during the years 1925-1928. The present writer is proud to have been a member of that team.

We gave Stanford such merciless beatings that the Stanford

Chess Club disappeared, and hasn't been heard from for a quarter of a century.

What inspired the above paragraphs is that the Golden Bears appear to be coming up with a chess Thunder Team, which may even equal the Wonder Team. The coming Team Tournament of the San Francisco Bay Area Chess League will be watched very closely by the old Cal players.

Nov. 20,
1953