

# Each Move Is Important in Chess

## THE CHESS PLAYER

By Dr. H. J. Ralston

Editor, The California Chess Reporter

Since a number of our readers may not have had experience in solving chess problems or in studying printed diagrams, it is important to note that it is the custom to represent the player of the white pieces as sitting at the bottom of the board. In other words, the white pawns always move up the board, and the black pawns down the board. When a problem is given in which mate is specified as occurring in a certain number of moves, it means that if the player of the white pieces makes the correct first move (called the key-move), he will force mate in the given number of white moves no matter what defense the player of the black pieces adopts. In Task No. 1, white will be able to mate on his second move no matter what move black makes, provided white finds the correct first move. Solvers need only state the first move of white in a two-move problem.

### On Finding a 'Cook'

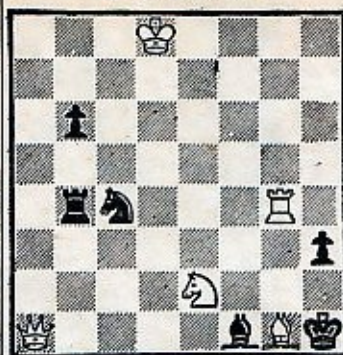
It occasionally happens that some first move not intended by the composer of the problem will also force mate in the specified number of moves. Such a non-intended move is called a "cook," and the problem is said to be "cooked." If one of our solvers should find such a cook, he will be given credit according to the number of points specified. If the solver finds the intended move, and the cook as well, he will be given one extra point for the cook. In the case of three-move problems, two extra points will be awarded for finding a cook. An incorrect solution receives one point.

Solutions to tasks should be postmarked not later than the Tuesday following publication. Postcards are preferred for answers to tasks. A list of solvers' names will be published regularly, in the form of a "ladder," and the solver at the top of the ladder will win a prize at regular intervals. The first prize will be awarded to the solver who first gets ahead of the rest of the field. Thereafter, prizes will be awarded when a solver gains a specified number of points.

### Tourney Next Month

A busy chess season is ahead

## TASK NO. 1 By O. C. Budde



White mates in two moves.  
(Value three points.)

of us. First and foremost, the Northern California Championship Tournament is due to start Saturday, July 25, at 1 p. m. at Mechanics Institute Chess Club, 57 Post-st. This tournament will be conducted under the auspices of the California State Chess Federation, and in addition to determining the champion of Northern California for the year 1953-54 will also qualify two players to the State Finals in Los Angeles for the championship of California. The tournament is open to all players, and a trophy and cash prizes will be awarded. Entrance fee of \$5.00 plus membership in the California State Chess Federation (CSCF) are required. Membership in the CSCF is \$2.50 per year, which includes subscription to The California Chess Reporter, official organ of the CSCF.

Play in the tournament will occur on Saturday and Sundays over three successive week-ends, play alternating between the Mechanics Institute and the Golden Gate Chess Club. The latter club is located in the Hotel Cecil, 545 Post-st.

### Where to Sign Up

Players interested in participating in this tournament should write to Mr. Guthrie McClain, Room 805, 544 Market-st, San Francisco 4, who will direct the tournament. Mr. McClain is the chairman of the board of directors of the CSCF.

The Golden Gate Chess Club announces a busy calendar for the coming weeks. On Tuesday, July 7, at 8:00 p. m., Mr. Henry Gross, chess co-champion of Cali-

fornia, will give a simultaneous exhibition, open without charge to all players. Visitors are welcome. A "ladder" tournament will become a permanent feature of the club's activities, beginning in July. In August Mr. Imre Konig, the well-known international chess master, will begin a series of Tuesday evening lecture-study lessons, followed by supervised play. This is a rare opportunity for both beginners and more experienced players to learn a lot about the game of chess.

Also in August, the Golden Gate club will stage a tournament for inexperienced players, play to occur on Tuesday evenings.

### U. S.-Soviet Match

The most important chess news on the national front is the announcement of the composition of the American team which will meet the Soviet team in New York July 15. Invitations have been extended to the 10 top-ranking players in the nation, as rated May 20 by the U. S. Chess Federation. They are: Samuel Reshevsky, Brooklyn; Dr. Reuben Fine, Flushing; Larry Evans, New York; Robert Byrne, New York; George Kramer, U. S. Army; I. A. Horowitz, New York; Arnold S. Denker, New York; Max Pavey, Brooklyn; Arthur Bisguier, U. S. Army, and Arthur Dake, Portland, Ore.

We had intended to give the score of a chess game this week but the length of the column has exceeded expectations, so we shall postpone the game to next week. See you then.