

THE CHESSPLAYER.

[All communications for this department should be addressed to "Chess Editor Argonaut, No. 213 Dupont Street, San Francisco, Cal."]

Problem No. LXIX.—By H. F. L. Meyer.

WHITE—King at K6; Rook at Q3; Bishop at K2; Knight at K3; Pawn at Q2.

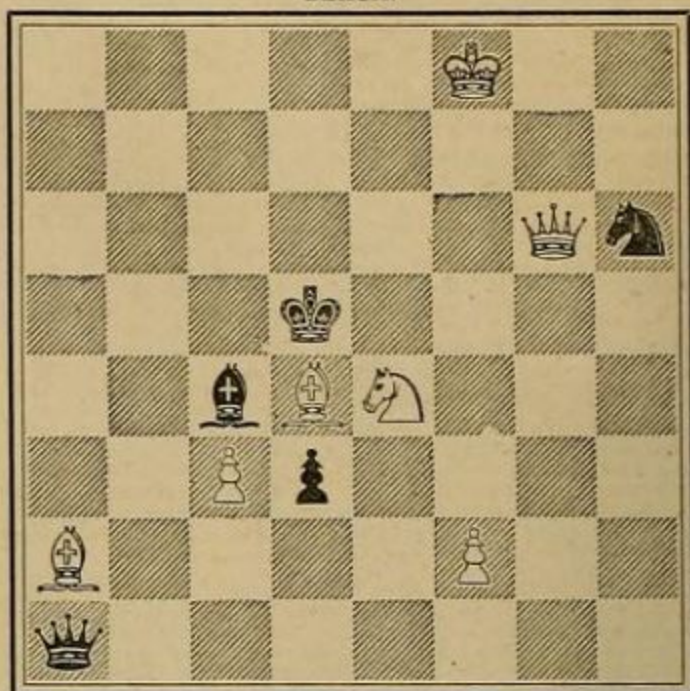
BLACK—King at QKt4; Pawns at QKt3, QKt2.

White to play and mate in two moves.

Problem No. LXXX.—By E. G. L.

From Chess Monthly.

BLACK.



WHITE.

White to play and mate in three moves.

Solution of Problem No. LXI.

1—Q Kt8
2—Q, R, B, or Kt mates acc.

1—Any move

Solution of Problem No. LXII.

1—Kt KB6
2—Kt x P
3—Q R6 or B4 mates acc

1—K x Kt at B6 (a)
2—Any move.

(a) 1—
2—Kt B7
3—Q or P mates acc.

1—K x Kt at B5
2—Any move

Answers to Correspondents.

E. A. K., Oroville, Cal.—In No. LXV, if R x B, then Black replies R x R ch. Your two-mover can also be solved by 1 Q x P ch, any move; 2 Q K4 mate. The other problem can not be used. Should be pleased to receive a call.

J. B. and E. M. Muñoz, Brooklyn, N. Y.—Your favor received with missing number. Accept thanks for prompt attention.

Game No. 46.

Through the New Orleans *Times-Democrat*, we are indebted to the Frankfort *Schachzeitung* for the score and notes of the following highly interesting game, played July 17, 1884, in the principal tourney of the third congress of the Southwestern German Chess Association between Mr. Bauer, of Frankfort, and Mr. Schwan, of Düsseldorf:

QUEEN'S PAWN'S OPENING.

White.	Black.	White.	Black.
Mr. W. Bauer.	Mr. Schwan.	18—R KB sq	18—Kt Q sq
1—P Q4	1—P Q4	19—Kt B3 (d)	19—Kt B2
2—KKt B3	2—KKt B3	20—R Kt3	20—K Kt2
3—P K3	3—P K3	21—Q B4	21—P KR3
4—B Q3	4—P B4	22—P KR4	22—B Q2
5—P QKt3	5—P x P	23—P B4 (e)	23—B B3
6—P x P	6—B Kt5 ch (a)	24—R R3 (f)	24—P KKt4
7—P QB3	7—B Q3	25—RP x P	25—RP x P
8—Castles	8—Castles	26—R Kt3	26—P Kt5 (g)
9—Kt K5	9—KKt Q2	27—R x P ch !!	27—P x R
10—P KB4	10—P B4	28—Q x P ch	28—Kt Kt4
11—R B3	11—Kt KB3	29—Kt x Kt	29—R x R ch
12—R R3	12—Kt B3	30—K x R	30—K B sq (h)
13—B K3	13—B x Kt	31—Q R5	31—Q K sq (i)
14—BP x B	14—Kt KKt5	32—B Kt6	32—Q B sq
15—Q Q2 (b)	15—Kt x B	33—Q R7 (j)	33—B K sq
16—Q x Kt	16—P KKt3 (c)	34—Q R8 ch	34—K K2
17—Kt Q2	17—Q K2	35—Q B6 ch	Black resigns.

NOTES BY MR. BAUER.

(a) Lost time, because the adverse QKt should come out not at QB3, but via Q2.

(b) 15 B to Q2 with the intention of subsequently playing R to Kt3, followed by P to KR3, was not feasible, because of black's counter attack by Q to R5.

(c) Necessary to prevent 17 P to KKt4.

(d) Also played to stop the advance of the adverse KKtP.

(e) White seeks to dislodge the adverse QB, with the object of sacrificing his own Bishop for the KBP.

(f) Menacing P to KKt4.

(g) The only move! Had he played the K to Kt3, the following pretty variation would have occurred: 26—K Kt3; 27 Kt R4 ch, K R3; 28 K B2!, P x Q; 29 Kt x P ch, P x Kt; 30 R KR sq ch, and mates next move.

(h) If 30—R KB sq ch; 31 Kt B7 dis ch, K x Kt; 32 Q Kt6 mate. If 30—R Rsq; 31 Kt R7 dis ch, mating in a few moves. Finally, if 30—R KKt sq; 31 Kt x P dbl ch, K B2; 32 Q R5 ch, K x Kt; 33 B B5 mate.

(i) The only move to avoid immediate mate or the loss of the Queen.

(j) Prettily gaining time, and forcing mate in five moves.

In the Fifth Annual Chess Tournament of the New Orleans Chess, Checkers, and Whist Club, just closed, Mr. J. D. Séguin, the chess editor of the *Times-Democrat*, won the first prize, and Messrs. C. O. Wilcox, M. F. Factum, F. Dameron, the second, third, and fourth prizes respectively.

The Brooklyn *Chess Chronicle* has just entered upon the third year of its existence, and is to be congratulated upon its success. The present number is an excellent one, full of interesting chess matter, and will be gladly welcomed by every chess player.