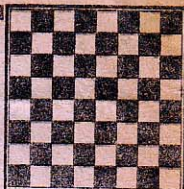


# chess

by richard shorman



White sets up a minor brilliancy only to witness his fortune suddenly reversed as he falters at the critical moment. A real heartbreaker!

White: Louis Osternig.

Black: Kim Stockslale.

Oakland Open, Class "B", June 22, 1968.

White: Louis Osternig.

Black: Kim Stocksdale.

1 P-K4	P-K4	10 NxP	NxN
2 N-KB3	N-QB3	11 RxN	N-B3(d)
3 B-N5	P-QR3	12 P-Q4	B-Q3
4 B-R4	N-B3	13 R-K1	N-N5
5 0-0	B-K2	16 BxPch(h)	BxPch(f)
6 R-K1	P-QN4	15 K-R1	Q-R5(g)
7 B-N3	0-0(a)	16 BxPch(h)	K-R1
8 P-B3(b)	P-Q4(c)	17 Resigns(i)	
9 PxP	NxP		

(a) All old hat up to here, both sides following a standard pattern distilled from master play. Black's last move retains the option of consolidating his strongpoint at K4 by 8 P-B3 P-Q3 or initiating the counterattack in the game.

(b) White can also play 8 P-QR4 B-N2 9 P-Q3 N-QR4 10 B-R2 P-Q3 11 B-Q2 N-B3 12 N-B3 N-R2 with relatively equal chances (MCO 10, p. 41).

(c) Accepting the Pawn sacrifice subjects White to a terrific onslaught by a mobilized foe, but 10 P-Q4 PxP 11 NxP NxN 12 QxN N-B3 13 QxQ BxQ promises nothing better than an early draw.

(d) The original line, introduced by Frank Marshall in a famous (and exciting) game against Capablanca 50 years ago. The modern treatment begins 11 . . . P-QB3.

(e) A dubious transposition from the normal 14 P-KR3 that baits a diabolical trap.

(f) Black strikes the lure full force. Immense complications (favoring White) stem from 14 . . . Q-R5! Capablanca—Marshall (New York, 1918) continued 15 P-KR3 NxP 16 R-K2! B-KN5 17 PxB B-R7ch 18 K-B1 B-N6 19 RxN Q-R8ch 20 K-K2 BxR 21 BQ2 B-Q2 B-R5 22 Q-R3 QR-K1ch 23 K-Q3 Q-B8ch 24 K-B2, and White weathered the storm.

(g) Had he seen the danger Black would have tried 15 . . . B-Q3, but after 16 P-N3 R-N1 17 K-R1 he holds all the cards.

(h) The chess player's lament, "I had a won game," really wears well here. Showers of praise descend upon the winning shot, 16 QxPch!! As it stands, White gets blasted for following Black's bad example. Beware of bad checks!

(i) A pity, but there is no answer to the threats of 17 . . . NxPch and 17 . . . B-N6ch, e. g., 17 P-KN3 BxPch 18 K-N2 Q-R7ch 19 K-B1 NxP! 20 R-K2 (what else?) B-R6ch 21 K-K1 Q-N8ch 22 K-Q2 Q-Q8ch 23 K-K3 Q-Q6mate.

★ ★ ★

## WHERE TO PLAY CHESS

The Hayward Chess Club, 2058 D St. (Hayward Arts and Science Center). Monday and Friday, 8-11 p.m.

Cherryland Cafe, 22474 Meekland Ave. (corner of A St. and Meekland Ave.), Hayward. Evenings, 10 p.m. to 6 a.m.

The Fremont Chess Club, School St., Niles (Niles Community Center, close to Niles High School). Monday, 7-11 p.m.

The Newark Chess Club, Cedar Blvd. (Newark Community Center), Friday, 7-10 p.m.