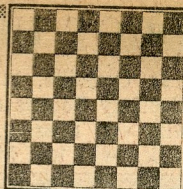


chess

by richard shorman



EXHIBITION PLAY

Chess Master Jude Acers, winner of more than 50 tournaments across the nation (latest victory, equal first at LERA, USCF Open Division, Sept. 21-22), will play all comers in **simultaneous exhibition**. Your choice of colors, play with or without a clock, free analysis of your game. Board fee only \$1!

Call Richard Sherman, 782-5029, for details.

THE LOSS

By JUDE ACERS, USCF MASTER

Being a poor loser is second nature to me. Yet this attitude is pointless, as exactly what is currently wrong with one's play may be found in close examination of losses. Here, then, is a horrible game from recent play.

White: Jude Acers.

Black: Larry Kaufman.

Santa Monica Open, 1968.

Sicilian Defense

1 P-K4	P-QB4	16 BxN	QxPch
2 N-KB3	P-Q3	17 K-N1	BxB
3 P-Q4	PxP	18 B-N5ch	K-B1(i)
4 NxP	N-KB3	19 B-R4	R-Q1
5 N-QB3	P-QR3	20 RxRch	BxR
6 B-KN5	QN-Q2(a)	21 R-Q1	B-K2
7 P-B4(b)	P-K3	22 P-K5	Q-K5
8 Q-B3	Q-B2	23 Q-B1	P-N4
9 O-O-O	P-N4	24 R-Q7(j)	P-N5
10 B-Q3(c)	B-N2	25 N-N5?!(k)	PxN
11 KR-K1	B-K2(d)	26 RxB/K7	Q-KB5!
12 Q-K2(e)	P-N5	27 Q-Q1	BxP!
13 N-R4	N-B4(f)	28 B-K8	RxP!
14 NxN(g)	PxN	29 Resigns (l)	
15 N-B3	P-R3(h)		

(a) A cramping variation, played for the struggle. It is in my opinion not good.

(b) Also very strong is 7 B-QB4.

(c) Weak. Best is 10 P-K5 B-N2 11 Q-R3 PxP 12 NxKP PxN 13 QxPch B-K2 14 NxP!! (Acers) PxN 15 BxP, with a tremendous attack. White is very fortunate in securing a tenable game after the textmove.

(d) Kaufman, a tremendous prospect and unusually consistent master, rejected 11...P-N5 12 N-Q5 with the post mortem comment, "There is no reason to invite anything like that!"

(e) A blunder positionally. Best is 12 P-QR3.

(f) Now Black makes a serious mistake. White's position is very poor after 13...Q-R4! 14 P-QN3 N-B4. The text allows White to gambit a pawn for an enterprising attack.

(g) Played with a great sense of relief as White obtains exchange of his rimmed Knight, courtesy of Black. Never trade off your opponent's poorly placed pieces.

(h) Black assumes that White has overlooked this finesse.

(i) Too strong is 18...PxB 19 QxPch K-B1 20 QxB R-QN1 21 Q-B6.

(j) Draws by force, but White foolishly tries to force the position, thinking only that he wants undisputed first prize. Moral: greed is unwarranted without a favorable position.

(k) Incredible stupidity, good reader. As I demonstrated immediately after the game, 25 N-R4 R-N1 26 RxB/K7 KxR 27 Q-B6ch K-B1 28 QxRPch R-N2 29 Q-R8ch R-N1 (29...K-K2 30 Q-K8mate) 30 Q-R6ch is necessary to draw. Other variations: (1) 25 N-R4 QxKP 26 N-N6ch; (2) 25 N-R4 BxN 26 QxPmate; (3) 25 N-R4 R-R2 26 RxB/K7 KxR 27 Q-B6ch Drawn.

(l) Forced is 29 RxPch QxR 30 BxQ R-R8 31 QxR BxQ 32 B-N6 P-N6, and wins. Naturally if 30 K-B1 here, then 30...QxB is final.

★ ★ ★

REDWOOD EMPIRE TOURNAMENTS...

George Koltanowski, International Master, will direct the Greater Redwood Empire Open and Junior Tournaments, Saturday and Sunday, Oct. 12-13, at the Novato Community House (one block east of Redwood Highway, US 101, at Diablo Ave., Novato, at traffic light). USCF Open Division will return 90 per cent of total entry fees (\$10 plus membership) in cash prizes. Trophies and book prizes for the first five places in the CFNC A, B, and C Divisions. Entry fee, \$5 plus membership. The Junior Division tournament (16 and under) will be run separately, with trophies and books for the first five winners. Entry fee, \$3 plus membership in CFNC (total \$5). Round one of this five-round Swiss system event begins at noon, Sat., Oct. 12.