

LONE PINE 1981

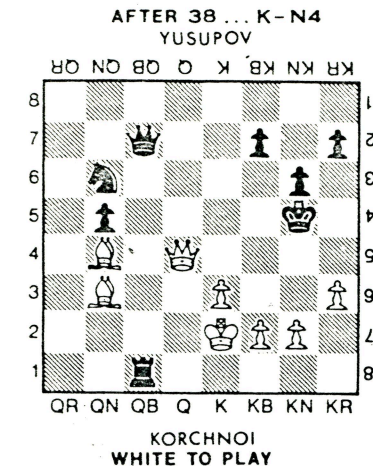
BYPASSING the usual celebrity treatment, grandmaster Viktor Korchnoi, second-ranked player in the world, modestly completed by Greyhound Bus the final leg of a journey which began in Stockholm and concluded in Lone Pine, Calif., the site of the Louis Statham International Tournament.

His arrival, on the day competition began, caught unawares both the tournament organizers and grandmasters Oleg Romanischin and Artur Yusupov, the two entries from the Soviet Union, which has been conducting an unofficial boycott of tournaments involving Korchnoi.

After conferring with embassy officials in Washington, the Soviet players remained to compete at Lone Pine.

Eleven days and 9 rounds later, Korchnoi had copped first place and \$15,000 in prize money, in a field of 60, which included a record 37 grandmasters and 16 international masters. Sharing equally \$22,000, were Yasser Seirawan, of Seattle, Washington, Gennadi Sosonko of the Netherlands and Svetozar Gligoric of Yugoslavia, who finished in a 3-way tie for second place.

For Korchnoi, who will challenge



Anatoly Karpov for the world title, beginning in early September, Lone Pine was a good omen.

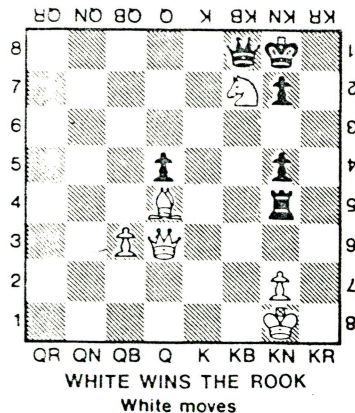
Lone Pine was also a good omen for U.S. chess. Among the 8 participants, who tied for fourth place were 4 U.S. players, Lev Alburt, Larry Christiansen, Ron Henley and James Tarjan, who thus complemented Seirawan's fine achievement.

Here is Korchnoi's crucial sixth-round victory over Yusupov.

KORCHNOI-YUSUPOV

- | | | |
|-----|---------|-------|
| 1. | P-Q4 | P-Q4 |
| 2. | P-QB4 | P-QB3 |
| 3. | N-KB3 | N-KB3 |
| 4. | P-K3 | B-N5 |
| 5. | P-KR3 | BxN |
| 6. | QxB | P-K3 |
| 7. | B-Q3 | QN-Q2 |
| 8. | N-B3 | P-KN3 |
| 9. | O-O | B-N2 |
| 10. | R-Q1 | O-O |
| 11. | Q-K2 | Q-B2 |
| 12. | B-Q2 | QR-Q1 |
| 13. | QR-B1 | Q-N1 |
| 14. | B-K1 | KR-K1 |
| 15. | Q-B2 | R-QB1 |
| 16. | P-QN4 | P-K4 |
| 17. | PxKP | NxP |
| 18. | PxP | NxP |
| 19. | B-K2 | NxNP |
| 20. | Q-N3 | N-Q4 |
| 21. | NxN | PxN |
| 22. | QxQP | RxR |
| 23. | RxR | R-QB1 |
| 24. | R-Q1 | N-B3 |
| 25. | B-B4 | Q-B2 |
| 26. | Q-K4 | N-K4 |
| 27. | B-N3 | P-QN4 |
| 28. | Q-Q5 | P-QR3 |
| 29. | P-QR4 | B-B3 |
| 30. | Q-K4 | N-B5 |
| 31. | PxP | PxP |
| 32. | R-Q5 | R-R1 |
| 33. | K-B1 | R-R8 |
| 34. | K-K2 | K-N2 |
| 35. | B-N4 | N-N3 |
| 36. | R-Q6 | R-QB8 |
| 37. | RxB! | KxR |
| 38. | Q-Q4ch | K-N4 |
| 39. | B-K7ch! | QxB |
- Black resigns

BEGINNER'S CORNER



Hint: An apparent black defense fails.

WHERE TO PLAY

The San Jose Chess Club meets Friday nights from 7 to 1 at the Blind Center, 101 N. Bascom Ave., near San Carlos (behind the Clover Hill Lions Club). For more information, call Roy Bobbin, 578-8067

TODAY'S SOLUTION

(1) N-R6ch! K-R1
[OR (1) (1) PxN? (2) Q-N6ch Q-N2
(only move) (3) QxQ mate] (2) NxB