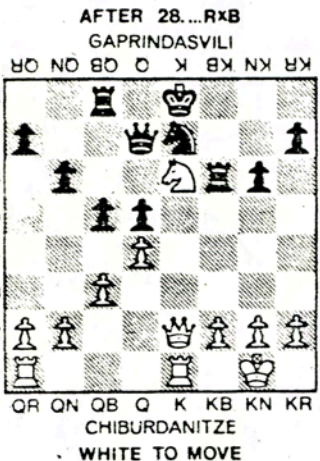


WOMAN CHESS MASTER VISITS NEW YORK



The 19th-rated woman chess player in the world, 42-year-old Elizabeth Polihroniade of Rumania visited New York City in July to compete in the Bar Point International tournament. Holding her own against a strong field of U.S. masters (all men), she topped off her performance with a win over Senior Master Joel Benjamin, the talented prodigy from Brooklyn.

As her own play attests, "Women's chess is growing rapidly," Polihron-

iade stresses. "It's part of the emancipation of women.

"Here in the U.S. you have many bright talents, but your women must play more in Europe, where the playing standard is still higher."

Polihroniade has high praise for the U.S. women's champion, 22-year-old Rachel Crotto: "Rachel is a wonderful girl. She is very, very talented. She has a great chess imagination. Very dangerous because she can see unexpected moves. But she needs more work, more competition."

In her own country, Polihroniade is a TV celebrity. She produces and hosts weekly network shows in science and chess. But her first passion seems to be playing tournament chess.

"I love chess," she says. "Especially the clash of ideas with concrete play. When I play chess, I feel that what I am doing is good, very real, like life itself."

Below is a crisp win by the wonderfully talented 19-year-old women's world champion, Maya Chiburdanitze from the 1980 Soviet Cup team tournament. Her opponent is the previous world champion.

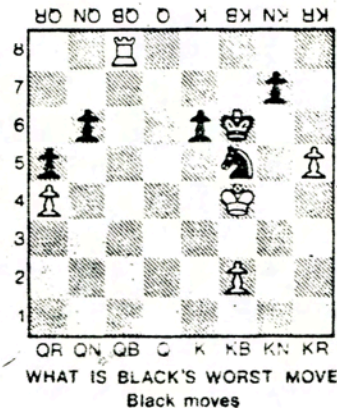
CHIBURDANITZE-GAPRINDASVILI

- | | | |
|-----|---------|-----------|
| 1. | P-K4 | P-K4 |
| 2. | N-KB3 | N-QB3 |
| 3. | B-N5 | P-B4 |
| 4. | N-B3 | N-Q5?! |
| 5. | 0-0 | NxB |
| 6. | NxN | PxP |
| 7. | NxKP | N-K2 |
| 8. | Q-R5ch! | P-N3 |
| 9. | Q-R4 | B-N2 |
| 10. | Q-B4! | R-B1 |
| 11. | QxKP | P-Q3 |
| 12. | N-KB3 | B-B4 |
| 13. | Q-QB4 | P-B3 |
| 14. | QN-Q4 | P-Q4 |
| 15. | Q-K2! | Q-Q2* |
| 16. | NxB | QxN |
| 17. | R-K1 | B-B3 |
| 18. | N-Q4 | Q-Q2 |
| 19. | N-K6 | R-B2 |
| 20. | P-Q4 | R-QB1 |
| 21. | P-QB3 | P-N3 |
| 22. | B-N5 | P-B4 |
| 23. | BxB | RxB |
| 24. | Q-K5! | Resigns** |

1* White's sixth queen move in 8 moves!

** Black loses material. For example, 24)... R-B4, 25) N-N7ch and 26) NxR. Or 24) R-B2, 25) Q-R8ch, etc.

BEGINNER'S CORNER



TOURNAMENT

Oktoberfest, a four-round tournament, will be held at U.C.-Berkeley's Student Union Building, Telegraph and Bancroft, Oct. 4 and 5.

For information, telephone Alan Benson, (415) 843-0661.

TODAY'S SOLUTION

1) ... N-K2?? allowing 2) R-KB8 mate!