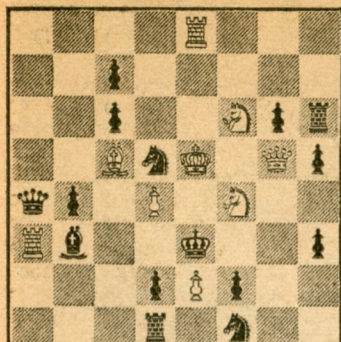


BY G. HEATHCOTE

BLACK 15



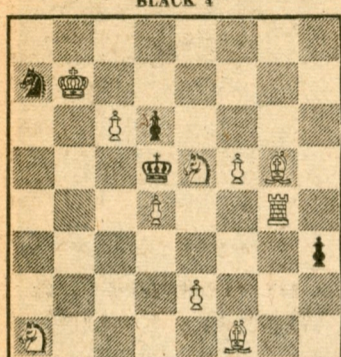
WHITE 9

White mates in two.

TIMES PROBLEM 2508

BY H. JONSSON

BLACK 4



WHITE 10

Whites mates in three.

SOLUTION TO PROBLEM 2503: KxQP.

SOLUTION TO PROBLEM 2504: Q-B7.

We received solutions from J. P. Walsh, P. V. Nielsen, D. M. Fehling, N. Lesser, W. B. Tudor, T. Rothman, N. Shaeffer Jr., B. McGuire, J. G. Scripps, C. G. Taber, W. C. Everett, M. Morris, Toscha Seidel, J. J. Adams, C. P. Ford, E. E. Hetherington, K. Chambers, J. Elliott, A. P. Bertholds, J. H. Gordon, C. J. Gibbs, Y. V. Oganosov, D. Kopec, E. J. Lee, Dr. J. A. Healy, C. B. Collins (thanks for reminding of the typographical errors in score), L. A. Victor, R. Sinnott, R. P. Martin, J. Kaufman, S. R. Leopold, J. C. Dickson, N. Copinof, L. Harvey, C. T. Tongko, S. W. Nay, R. Lorber, C. Poster, R. E. Cunningham, J. Helperin, T. Cline, D. A. Lydon, H. B. Herring.

EDITOR'S NOTE

Your editor wishes to thank his readers for their many good wishes and in return wishes everyone a happy and prosperous New Year!

KOLTANOWSKI EXHIBITION

The City Terrace Cultural Center Chess Club will present George Koltanowski, international master, world's blindfolded champion and chess editor of many publications, in an exhibition. He will play eight opponents while blindfolded and will lecture on the games on Wednesday, Jan. 6, at 8 p.m. in the center, 3875 City Terrace Drive.

Charles E. Kodil will be the referee and LeRoy Johnson master of ceremonies. The public is invited.

All East Side residents of Los Angeles interested in chess are invited to join the Center Chess Club. Free instruction is given to beginners. The club meets every Wednesday. Take your chess sets.

JUNIOR CHAMPIONSHIP

The Hollywood Chess Group, 108 N Formosa Ave., is the scene of the first Southern California Junior Championship which began last Sunday. Jerome Wolfe of the University of California at Santa Barbara leads with a score of 12-0; close behind him is Ronald Gross of Compton College, 11-0; Paul Levin of UCLA, 14-1; Peter Meyer of Van Nuys, 12-2; Eugene Steiner, Fairfax High, 8 1/2-2 1/2; W. Keesling, UCLA, 7 1/2-2 1/2; R. Bercutt, Fairfax High, 7 1/2-3 1/2; L. Rotter, Louis Pasteur High, 8-4; Ben Shaeffer Jr., San Bernardino High, 8-4; Alex Hurwitz, University High, 8-8.

There are 28 participants and it is a round-robin tournament. Games are played daily. The tournament will finish by New Year's Day.

NEW CHESS CLUB FORMED

A new chess club has been formed with Jerome Wiener, president, and Mathew Ek, secretary. The club would like to play matches with other clubs. Those interested write Jack Gysbers, team captain, c/o Recreation Department, North American Aviation Corp., Downey, or call LOgan 5865. Extension 661. This club recently played against the Douglas Aviation Plant of Long Beach at Pan American Park and emerged winners with a score of 7 1/2-1 1/2.

LOS ANGELES COUNTY LEAGUE MEETING

The Los Angeles County Chess League will hold its annual meeting Tuesday, Jan. 5, at 8 p.m. at the headquarters of the Hollywood Chess Group, 108 N Formosa Ave. Plans for 1954 activities will be discussed and especially the forthcoming county championship. All clubs and groups are cordially invited to attend.

MISS N. MAY KARFF WINS NATIONAL WOMEN'S CHESS CHAMPIONSHIP

Miss N. May Karff, by defeating Mrs. Gisela K. Gresser in the last round, emerged winner with a score of 7 1/2-1/2 in the National Women's Chess Championship Tournament in New York last Sunday. Second place went to Mrs. Gisella K. Gresser with 7-1, third to Mrs. Rosalie de Serrano with 5 1/2-2 1/2 (formerly of Costa Rica). Other scores are: Miss Kate Henschel and Wally Henschel, 4 1/2-3 1/2; Miss Adele Raettig, 2 1/2-5 1/2; Mrs. Henrietta Rogers, 2 1/2-5 1/2; Mrs. Micaela Babakin, 2-6; Mrs. Margaret Story, 0-8.

It was unfortunate that this tournament was not representative of the women of the entire country, but instead resulted in a local women's tournament. Former Champion Mrs. Mary Bain, Mrs. Catherine Slater, Mrs. Sonia Graf Stevenson, Mrs. G. Piatigorsky, Mrs. Nancy Roos, Mrs. Lena Grumette, Mrs. Villa White Owens, Mrs. Mary Selinsky, Mrs. Eva Aronson, Mrs. Maxim Cutlip, Miss Lucille Kellner and many others would probably have participated if sufficient time had been given.

We hope in the future that for any national event at least one year will be given so the participants will be able to arrange their affairs in order to play.

RAPID TRANSIT WINNERS

The weekly Wednesday evening Rapid Transit Tournament played in the Hollywood Chess Group quarters, 108 N Formosa Ave., was won by Irving Rivise, second place went to H. Rogosin and third to R. W. Banner. The tournament is open to anyone interested. For information call Webster 1-8817, Wyoming 3510 or visit the group. Open evenings and Saturday and Sunday afternoons.

HOLLYWOOD CHESS GROUP CHAMPIONSHIP

The annual Hollywood Chess Group Championship Tournament finished last week with the largest number of participants in the history of the group. There were 37 players and 32 finished the 10-round Swiss System. The highlight of the tournament was the return and good showing of Harari, Goshler and Karpilowsky, all of whom had been away from active chess for many years. Four women participated and made a fine showing. Credit and thanks go to Charles Kodil for his able direction.

Final standing of players:

Table with 4 columns: Player Name, W, L, S.B., Score. Lists top players like Steiner, Rivise, Mazner, Levin, Jacobs, Alexander, Harari, Banner, Geller, Woronzoff, Goshler, Karpilowsky, Gardner, Blumenfeld, Mrs. Grumette, Mrs. Roos, Zelig, Maron, Johanson, Mrs. Piatigorsky, Bakst, Sleep, Freed, Wheeler, Wolfe, Henderson, Wyman, Shearer, Bain, Mrs. Henderson, Kleinberg, Dr. Burns, Rogosin, Spinner, Lebow, Frumkin, Eucher.

CANDIDATES TOURNAMENT GAMES

The following games are from the World Champion Candidates Tournament concluding last October in Zurich, Switzerland.

QUEEN'S GAMBIT DECLINED

Table with 4 columns: Player Name, White, Black, White, Black. Lists moves for games between Bronstein-Stahlberg and Bronstein-Stahlberg.

QUEEN'S INDIAN DEFENSE

Table with 4 columns: Player Name, White, Black, White, Black. Lists moves for games between Najdorf-Auerbach and Najdorf-Auerbach.

KING'S INDIAN DEFENSE

Table with 4 columns: Player Name, White, Black, White, Black. Lists moves for games between Stahlberg-Reshevsky and Stahlberg-Reshevsky.

RUY LOPEZ

Table with 4 columns: Player Name, White, Black, White, Black. Lists moves for games between Boleslavsky-Keres and Boleslavsky-Keres.

NIMZO-INDIAN DEFENSE

Table with 4 columns: Player Name, White, Black, White, Black. Lists moves for games between Taimanov-Petrosian and Taimanov-Petrosian.

SICILIAN DEFENSE

Table with 4 columns: Player Name, White, Black, White, Black. Lists moves for games between Gligoric-Auerbach and Gligoric-Auerbach.