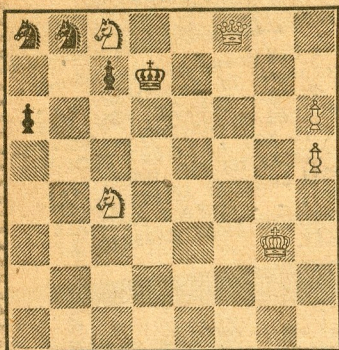


**WHITE 9**

White mates in two.

**TIMES PROBLEM 2488**  
 BY DR. E. HALLGREN  
**BLACK 5**



**WHITE 6**

White mates in three.

**SOLUTION TO PROBLEM 2483: N-Q3.**  
**SOLUTION TO PROBLEM 2484: R-B4.**

We received solutions from A. P. Berthold, W. B. Tudor, C. B. Collins, Toscha Seidel, L. Rotter, M. J. Bakjian, C. J. Gibbs, T. Rothman, J. Davidson, E. E. Hetherington, P. V. Nielsen, C. G. Taber, B. McGuire, J. H. Gordon, D. M. Fehling (in Problem 2480, 1-B-B8, if PxN; 2-Q-Q5ch, PxQ; 3-NB5 checkmate), J. P. Walsh (re Problem 2479: 1-N-QB6, if N-N3; 2-PxB(Q)mate), P. R. Jones, A. D. Blotti, J. G. Scripps, R. E. Cunningham, R. Sinnott, M. Morris, C. P. Ford, Dr. M. Tosan, W. L. Koethen, R. W. Peterson, J. J. Adams, N. Lesser, K. Chambers, L. A. Victor, D. D. Newman, K. J. Hartman, J. C. Dickson, C. T. Tongsko, L. Harvey, K. M. Sims, J. Kaufman, S. E. Williams, W. L. Rankel, S. W. Nay, Dr. J. A. Healy, W. C. Everett.

**CORRECTIONS**

There were several misprints in the early editions last week in Problems 2485 and 2486. Here is the correct set-up:

Problem 2485, White mates in two. White: K on KB1, Q on QR8, Rs on KR5 and KB7, Bs on KN3 and QN3, Ns on KN2 and QB4, Ps on QN5, QB3, QB2, Q5 and KR2. Wh. 13.

Black: K on K5, R on KB5, N on KN4, B on KB3, Ps on QB4, KN5, KB7 and KR3. Bl. 8.

Problem 2486, White mates in three. White: K on KN4, Ns on QN8 and KN6, B on Q5, Ps on QN7, QN6, QB4, KB6 and KR5. Wh. 9.

Black: K on Q3, B on QB4, N on Q1, Ps on QR6, Q2 and K6. Bl. 6.

**RAPID TRANSIT WINNERS**

The weekly Wednesday Evening Rapid Transit Tournament played at the Hollywood Chess Group, 108 N Formosa Ave., was won by Sven Almgren with a score of 13½-1½; second place went to Louis Spinner, 13-2; third to William Benedetti, a Nevada State champion, 12-3; fourth and fifth places were tied by Mrs. Nancy Roos and Irving Rivise, 11½-3½. The tournament is open to anyone interested in playing in it. For information call Webster 1-8817 or visit the club, open evenings.

**HOLLYWOOD CHESS GROUP CHAMPIONSHIP**

Thirty-five players are participating

in the annual Hollywood Chess Group Championship. Because of the large number of players participating an 11-round Swiss system was introduced. Here are the first-round results: Henderson 0, Levin 1; Mazner ½, Karpilovsky ½; Mrs. Grumette ½, Goehler ½; Mrs. Piatigorsky ½, Wyman ½; Mrs. Henderson 0, Gardner 1; Lebow 0, Wolfe 1; Kleinberg 0, Jacobs 1; Maron ½, Freed ½; Blumenfeld 0, Harari 1; Mrs. Roos 0, Alexander 1; Zelig 0, Wheeler 1; Bain 0, Johanson 1; Dr. Burns 0, Banner 1; Woronoff 1, Bakst 0; Frumkin 0, Steiner 1; Rogosin ½, Spinner 1; Shearer 0, Geller 1; Sleep had the bye. Games are played every night as well as Saturday and Sunday afternoons and visitors are welcome.

**IMRE KOENIG SIMULTANEOUS EXHIBITION**

San Diego chess players are going to have a chance to match their wits with Imre Koenig, famed international chess master and well-known author of best-selling chess books, next Wednesday when he will meet all comers simultaneously. Sponsored by the Convair Chess Club in co-operation with the San Diego, Chula Vista, La Mesa and Gas & Electric Co. Chess Clubs, the event will take place at the Convair Recreation Center, 3401 Pacific Highway, across from the Convair plant. Play will start at 7:30 p.m. and the entrance fee is \$1.25. Take your board and men, if possible.

Koenig has agreed to permit weaker players to play as teams if they desire and he will be happy to take on late-comers up to about 8:15 o'clock.

For further information contact John Alexander, director for San Diego County, California Chess Federation, 1176 Loring St. Telephone H8-7370.

**NIMZO INDIAN DEFENSE**

Br'nstein	B'leslavsky	Br'nstein	B'leslavsky
White	Black	White	Black
1-P-Q4	N-KB3	12-Q-B2	KN-K5
2-P-QB4	P-K3	13-BxB	QxB
3-N-QB3	B-N5	14-NxN	NxN
4-Q-N3	P-B4	15-N-Q4	P-Q4
5-PxP	N-R3	16-PxP	BxP
6-N-B3	O-O	17-P-B3	KR-B
7-B-N5	BxP	18-Q-R4	N-B4
8-P-K3	P-QN3	19-Q-R3	B-N2
9-E-K2	B-N2	20-B-B	P-KR3
10-O-O	B-K2	21-P-QN4	Draw
11-KR-Q	N-B4		agreed

**NIMZO INDIAN DEFENSE**

Taimanov	Euwe	Taimanov	Euwe
White	Black	White	Black
1-P-Q4	N-KB3	22-P-B4	PxP e.p.
2-P-QB4	P-K3	23-P-K4	QR-K
3-N-QB3	B-N5	24-B-N5	RxP
4-P-K3	P-B4	25-BxN	RxB
5-B-Q3	P-Q4	26-RxP	RxQBP
6-N-B3	O-O	27-R-K	R-N5ch
7-O-O	N-B3	28-K-B2	R-Q5
8-P-QR3	BxN	29-R-K7	RxQP
9-PxB	PxBP	30-P-B6	RxP
10-BxP	Q-B2	31-RxR	PxR
11-B-R2	P-K4	32-RxNP	P-QR4
12-Q-B2	B-N5	33-R-N5	P-R5
13-P-Q5	N-K2	34-R-R5	R-Q5
14-P-B4	BxN	35-RxBP	R-Q6
15-PxB	Q-Q2	36-R-QR5	RxP
16-B-N	N-N3	37-R-R7	R-R8
17-Q-B5	QxQ	38-K-N3	P-R6
18-BxQ	N-R5	39-K-N4	P-R7
19-B-K4	NxB	40-K-R5	P-B4
20-PxN	P-B4	41-K-R6	P-B5
21-PxP	P-K5	42-Resigns	

**KING'S INDIAN DEFENSE**

Euwe	Gligoric	Euwe	Gligoric
White	Black	White	Black
1-P-Q4	N-KB3	23-N-N5	PxP
2-P-QB4	P-KN3	24-N-Q6	B-K3
3-P-KN3	B-N2	25-NxR	RxN
4-B-N2	O-O	26-Q-B3	QxQ
5-N-QB3	P-Q3	27-PxQ	N-B3
6-N-B3	QN-Q2	28-B-N6	BxBP
7-O-O	P-K4	29-R-K4	R-R4
8-P-K4	PxP	30-BxB	NxB
9-NxP	N-B4	31-R-K5	P-N3
10-P-KR3	R-K	32-R-QN5	P-B6
11-R-K	P-QR4	33-R-B	R-QB
12-Q-B2	P-R5	34-R-N4	BxP
13-B-K3	P-B3	35-RxP	B-N4
14-QR-Q	KN-Q2	36-R-N4	N-N6
15-P-KN4	Q-R4	37-R-B2	N-R8
16-B-KB	N-K3	38-R-B	N-N6
17-K-N2	P-R4	39-R-B2	N-Q7
18-P-B3	PxP	40-B-K2	B-N6
19-RPxP	N-K4	41-RxN	P-B7
20-QN-K2	NxN	42-RxBP	
21-NxN	P-Q4		Draw agreed
22-KPxP	BPxP		

**RUY LOPEZ**

B'lesl'vsky	R'sh'vsky	B'lesl'vsky	R'sh'vsky
White	Black	White	Black
1-P-K4	P-K4	13-QN-Q2	N-B3
2-N-KB3	N-KB3	14-N-N3	P-QR4
3-B-N5	P-QR3	15-B-K3	P-R5
4-B-R4	N-B3	16-QN-Q2	B-R3
5-O-O	B-K2	17-R-QB	Q-N2
6-R-K	P-QN4	18-P-R3	B-Q
7-B-N3	P-Q3	19-P-QN4	PxP e.p.
8-P-B3	O-O	20-NxNP	B-N3
9-P-KR3	N-QR4	21-N-R4	P-N3
10-B-B2	P-B4	22-B-N	
11-P-Q4	BPxP		Draw agreed
12-PxP	Q-B2		