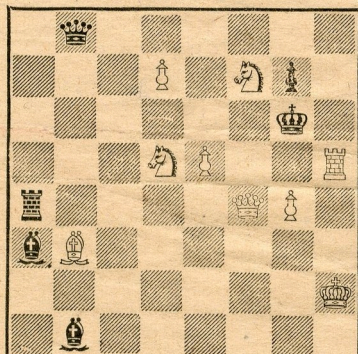


CHESS

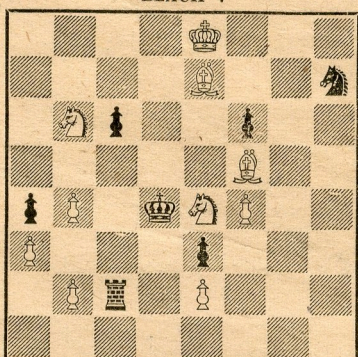
BY HERMAN STEINER
FORMER UNITED STATES CHAMPION
Address letters to Chess Editor, L.A. Times
Los Angeles 53, Cal.

March 27, 1955
TIMES PROBLEM 2637
BY W. MEREDITH
BLACK 6



WHITE 9

White mates in two.
TIMES PROBLEM 2638
BY C. A. TERNBLAD
BLACK 7



WHITE 10

White mates in three.
SOLUTION TO PROBLEM 2633: K-R3.
SOLUTION TO PROBLEM 2634: N-B2.

We received solutions from W. B. Tudor, J. Austel, J. P. Walsh, L. M. Satterlee, E. E. Hetherington, J. E. McElrea, J. R. DeWitte, W. C. Everett, D. C. Bransby, D. A. Keresy, Toscha Seidel, A. P. Berthold, J. J. Adams, J. L. Thomas, J. F. Ray, J. Munson, C. Huffman, C. P. Ford, C. G. Taber, M. Morris, D. M. Fehling, R. H. Bayne, J. H. Gordon, T. Rothman, Dr. S. W. Bergreen, B. McGuire, N. Lesser, K. Chambers, C. B. Collins, L. A. Victor, G. A. Boutin, S. W. Nay, S. D. Mann, S. Dean, J. Kaufman, A. Krepky, Dr. J. A. Healy, A. Lindheimer, R. Bagley, H. Ulick, J. C. Dickson, J. Davidson, L. Harvey, G. F. Heuser, W. M. Boyer, Greta Griffith ("The First Book on Chess" by Horowitz), J. J. McFarlane, J. E. Leland, D. Stoneham.

RESHEVSKY'S EXHIBITION RESULTS
Last Tuesday Samuel Reshevsky, former U.S. champion, gave a very successful exhibition at Romanoff's Beverly Hills restaurant, where he encountered 41 players. Reshevsky won 36, lost one to Prince Mike Romanoff and drew against Gary Norman, Larry rudin, Eugene Rubin and Saul Pollock.
On Wednesday he was guest of the Hollywood Chess Group where he played 10 strong players with clocks. He won eight, lost to young Robert Cross and drew with Samuel Geller. Herewith are some of the games of both exhibitions:

REMLINGER WINS LONG BEACH CHAMPIONSHIP

Larry Remlinger, 12, won the recently played Long Beach City Championship Tournament at the Lincoln Park Chess and Checker Club in Long Beach. The tournament was a 10-round Swiss System affair and Larry went through the tournament allowing only two draws against Doan and Fromess.

The highlight of the tournament is the fact that the first four players are juniors.

	W	S.B.		W	S.B.
Remlinger	9	57 1/4	Frembling	5	14 1/2
Fromess	8 1/2	49	Skinner	5	13
R. Gross	8	43 1/2	Foster	4 1/2	18 1/2
Wallace	7	37	Markus	4 1/2	16 1/2
Day	7	34 1/2	Thatch	4 1/2	15 1/2
Pesanti	6 1/2	29 1/2	Satterlee	4 1/2	14
Stone	6	30	De Bellis	4 1/2	9 3/4
Doan	6	29 1/2	Rhode	4	15
Rolo	6	28 1/4	Phillips	4	14 1/2
Clark	6	23	Chamness	4	12 1/2
L. Gross	6	23	Read	3 1/2	13 3/4
Reissman	5 1/2	30 3/4	Chapin	3 1/2	7 1/4
Blaney	5 1/2	27 3/4	Laykin	3 1/2	2
Huffman	5 1/2	26 1/2	Sturges	2	8
Weiss	5 1/2	22 3/4	Hynes	2	4 1/2
Fisher	5	22	Perluss	3	10
Boyer	5	20 1/2	Vesper	2	3 1/2
Timmel	5	17	Margos	1	0
Bascom	5	16 1/2			

COUNTY LEAGUE CHESS CLUB LOCATIONS

Following are the names and addresses of chess clubs in the Los Angeles County Chess League:

Beverly Hills: Roxbury Park Clubhouse, Olympic Blvd. and Roxbury Drive, meets Thursday, 8 p.m.

Cosmopolitan: 2180 W Adams Blvd., Wednesday, 7:30 p.m.

City Terrace: 3875 City Terrace Drive, Wednesday, 8 p.m.

Hollywood Chess Group: 108 N Formosa Ave., every night and Saturday and Sunday afternoons.

Inglewood: Recreation Center, 621 N La Brea Ave., Wednesday, 7:30 p.m.

Long Beach: Lincoln Park, Ocean Blvd. and Pacific, daily and nightly.

North American: Aviation plant, 12214 Lakewood Blvd., Downey, Thursday, 8 p.m.

Pasadena: Central Park Clubhouse, Raymond Ave. and Del Mar St., Pasadena, Friday, 8 p.m.

Santa Monica: Lincoln Park Clubhouse, Santa Monica, Wilshire Blvd. and 7th St., Monday, 7 p.m.

Valley: Recreation Building, Victory Blvd. and Vanowen Park, North Hollywood, Wednesday, 7 p.m.

Van Nuys: Home games at Water and Power Club, c/o G. A. Steven, 3759 Longview Valley Road, Sherman Oaks.

Water and Power: Water and Power Building, 110 S Boylston St., Room 300, Los Angeles 12.

SICILIAN DEFENSE		SICILIAN DEFENSE	
Reshevsky	Romanoff	Reshevsky	Romanoff
White	Black	White	Black
1-P-K4	P-QB4	25-Pxp	Pxp
2-N-QB3	N-QB3	26-Q-B2	B-B3
3-P-Q3	P-KN3	27-Q-Q2	R-N6
4-P-B4	B-N2	28-Q-R6ch	K-N
5-N-B3	P-Q3	29-P-R4	Rxp
6-P-KN3	N-B3	30-P-N4	R-Q8
7-B-N2	Q-N3	31-Q-B4	N-Q6
8-O-O	O-O	32-Q-K4	Q-B7
9-K-R	B-K3	33-Q-B3	RxR
10-R-QN	N-Q5	34-BxR	N-K4
11-B-K3	N-Q2	35-Q-N2	QxQch
12-P-QN4	Q-B2	36-KxQ	NxNP
13-N-Q5	BxN	37-K-B3	N-K4ch
14-PxB	P-N3	38-K-K4	P-Q6
15-PxP	NPxP	39-P-B5	PxP
16-N-R4	P-QR3	40-BxBP	P-Q7
17-P-R4	Q-R4	41-B-K2	N-B5
18-P-B4	QR-N	42-K-Q3	P-Q8(Q)ch
19-N-B3	RxR	43-BxQ	N-N7ch
20-QxR	QxP	44-K-K2	NxB
21-NxN	PxN	45-KxN	BxP
22-B-N	R-N	46-K-K2	K-B
23-Q-K	K-B	47-Resigns.	
24-P-KB5	N-B4		

QUEEN'S GAMBIT ACCEPTED			
Reshevsky	Geller	Reshevsky	Geller
White	Black	White	Black
1-P-Q4	P-Q4	32-Q-B5	Q-QB
2-P-QB4	PxP	33-QxQ	NxQ
3-N-KB3	N-KB3	34-K-B	K-Q3
4-P-K3	P-K3	35-K-K2	N-N3
5-BxP	P-B4	36-K-K3	N-R5
6-O-O	P-QR3	37-R-Q2	N-N3
7-N-B3	P-QN4	38-P-B4?	P-B6
8-B-Q3	B-N2	39-PxBP	N-B5ch
9-Q-K2	N-B3	40-K-Q3	NxR
10-R-Q	P-B5	41-KxN	PxPch
11-B-N	P-N5	42-KxP	PxP
12-N-K4	N-QR4	43-PxP	Rxp
13-NxNch	PxN	44-P-B5	K-B4
14-P-K4	Q-B2	45-P-R3	R-R8
15-B-K3	R-Q	46-B-Q3	R-R?
16-B-B2	P-KR4	47-B-K2	R-R
17-QR-B	B-B3	48-K-N3	R-R5
18-P-Q5	B-N4	49-B-Q3	R-Q5
19-N-Q4	P-K4	50-K-B3	R-R5
20-NxB	PxN	51-K-N3	R-R2
21-Q-B3	Q-Q3	52-B-B2	K-Q5
22-P-KR4	B-R3	53-K-N4	R-B2
23-QxRP	BxB	54-B-N	R-B8
24-QxRch	K-K2	55-B-R2	R-B7
25-Q-N7	BxR	56-B-N3	R-QN7
26-RxB	Q-N	57-P-K6	KxP
27-R-Q	N-N2	58-K-B3!!	R-R7
28-Q-N3	N-Q3	59-BxP	KxP
29-Q-K3	R-R	60-P-Q7	R-R
30-P-KN3	Q-R	61-B-K8	R-R6ch
31-B-N	Q-QN	62-K-Q2	R-R7ch

SICILIAN DEFENSE			
Cross	Reshevsky	Cross	Reshevsky
White	Black	White	Black
1-P-K4	P-QB4	22-NxN	PxN
2-N-KB3	P-Q3	23-Q-R6ch	K-R
3-P-Q4	PxP	24-PxP	R-QB
4-NxP	N-KB3	25-P-B3	Q-N6
5-N-QB3	P-KN3	26-QR-N	R-KN2
6-B-K3	B-N2	27-Q-K3	R(1)-KN
7-P-B3	O-O	28-PxP	RxRch
8-Q-Q2	P-QR3	29-RxR	RxRch
9-P-KR4	P-QN4	30-QxR	KxP
10-P-QR3	B-N2	31-Q-R7ch	K-N3
11-O-O-O	N-B3	32-QxP	Q-B5
12-P-KN4	N-K4	33-QxQP	Q-B8ch
13-P-R5	Q-B	34-Q-Q	Q-B7
14-B-R6	N-B5	35-Q-Q3	K-N2
15-BxN	QxB	36-K-N	K-R3
16-BxB	KxB	37-K-R2	Q-N4
17-Q-N5	B-B	38-Q-Q7	Q-K6
18-PxP	BPxP	39-QxP	QxKBP
19-N-Q5!	R-R2	40-Q-KB5	Q-Q6
20-N-B5ch!	BxN	41-QxPch	Resigns.
21-NPxP	R-KN		

KING'S INDIAN DEFENSE			
Reshevsky	Norman	Reshevsky	Norman
White	Black	White	Black
1-P-Q4	N-KB3	15-Q-N3	P-N3
2-P-QB4	P-KN3	16-PxP	PxP
3-N-QB3	B-N2	17-P-QR3	P-R3
4-P-K4	P-Q3	18-P-R3	N-Q
5-B-K2	P-K4	19-P-N5	P-B4
6-N-B3	QN-Q2	20-N-Q5	NxN
7-O-O	O-O	21-BxN	B-K3
8-R-K	R-K	22-R-Q	N-N2
9-B-B	P-B3	23-B-K3	QR-Q
10-R-N	Q-B2	24-N-Q2	N-R4
11-P-QN4	N-B	25-Q-R2	BxB
12-P-B5	N-K3	26-PxB	P-K5
13-PxKP	PxKP	27-N-B4	
14-B-B4	B-Q2		Draw agreed

RUY LOPEZ (Marshall attack)			
Reshevsky	Rudin	Reshevsky	Rudin
White	Black	White	Black
1-P-K4	P-K4	16-Q-B	Q-R4
2-N-KB3	N-QB3	17-B-Q	B-KN5
3-B-N5	P-QR3	18-BxB	QxB
4-B-R4	N-B3	19-B-K3	QR-K
5-O-O	B-K2	20-N-Q2	P-KB4
6-R-K	P-QN4	21-P-B3	Q-R4
7-B-N3	O-O	22-B-B2	P-N4
8-P-B3	P-Q4	23-RxR	RxR
9-PxP	NxP	24-R-K	RxR
10-NxP	NxN	25-QxR	Q-N3
11-RxN	P-QB3	26-P-QR3	P-KR4
12-P-Q4	B-Q3	27-P-QB4	PxP
13-R-K	Q-R5	28-NxB	B-B2
14-P-N3	Q-R6	29-N-K5	Q-K3
15-Q-Q3	K-R		Draw agreed.

DUTCH DEFENSE			
Reshevsky	Rubin	Reshevsky	Rubin
White	Black	White	Black
1-P-Q4	P-K3	24-Q-K2	P-N5
2-P-QB4	P-KB4	25-BxN	QxB
3-P-KN3	N-KB3	26-P-R4	BxP
4-B-N2	B-K2	27-PxB	QxPch
5-P-QN3	O-O	28-K-N2	R-N3
6-B-N2	P-Q4	29-Q-K	Q-N4
7-P-K3	P-B3	30-N-K2	P-KR4
8-N-K2	N-K5	31-R-R	QxP
9-O-O	N-Q2	32-RxPch	R-R3
10-P-B3	N-Q3	33-R-QR3	Q-B6ch
11-P-B5	N-B2	34-RxQ	NPxRch
12-P-B4	Q-K	35-K-B2	RxR
13-N-Q2	N-R3	36-N-B4	R-R7ch
14-N-KB3	N-N5	37-B-N3	R-R3
15-Q-Q3	Q-R4	38-B-B	R-Q2
16-P-KR3	N-R3	39-N-R3	R-Nch
17-N-K5	N-B3	40-N-N5	PxP
18-P-QN4	N-B2	41-PxP	R-R4
19-P-N5	NxN	42-Q-R5	R(5)xNch
20-BPxN	N-K5	43-BxR	RxBch
21-K-R2	P-N4	44-K-B4	R-N2
22-N-N	K-R	45-Q-Q8ch	K-R2
23-P-QR4	R-KN	46-Q-R4ch	Drawn.