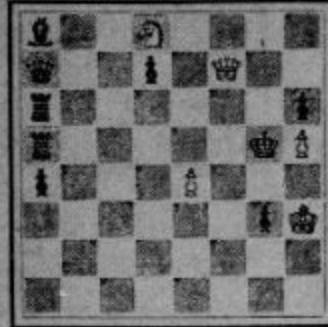
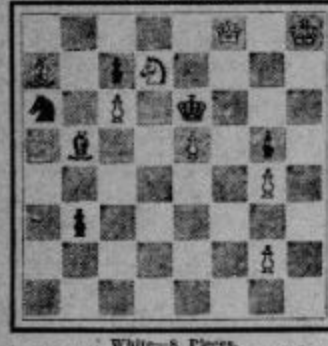




How is a clever study by G. Getzer, taken from 'Halpern's Symposium'...



White to play and mate in two moves. PROBLEM NO. 65—BY A. J. PINK



White to play and mate in three moves. SOLUTIONS: PROBLEM NO. 61—J. G. NIX

Play in the Prize Winners' Tournament at the Mechanics' Institute started last week. In the first round Flak lost to Branch, who defended with the Petroff; Stamer, playing the white side of a Giuoco Piano, drew with Ryder...

to CHESS EDITOR, SAN FRANCISCO CALL) game. (b) A stronger move than the old fashioned 10... P-QB3. (c) Black's attack has come to nothing, and his development is inferior. It would, therefore, be advisable to play 15 P-K3, P-K3; 16 R-R, R-R.

The schedule calls for two games a week. Prizes will be given to first and second.

Frank J. Marshall completed the circle of the United States on July 25, when he reached New York. After a tour which lasted about six weeks, Marshall writes: 'Arrived O. K., a bit tired and nervous, but otherwise fine.' His next appearance in tournament play will probably be at St. Petersburg, Russia.

Table for Game No. 91: Ruy Lopez. Doctor Asanlou (white) vs. Sisk (black). Columns for White and Black moves.

NOTES (a) The usual move, P-Q3 is sound. The early advance does not benefit black. (b) A venturesome plan, which forces both players into regions of combination.

An opportunity for securing excellent instruction in chess is offered by E. W. Gruer, whose ability as a chess player is known to readers of this column. Gruer, who has been a 'prof.' at the University of California summer school, and who will have charge of the chemistry department at the University of New Mexico when that institution opens for its fall semester, will give instruction to any one, especially the 'young idea' who desires to learn the royal game.

Table for Game No. 92: Ruy Lopez. Doctor Dudley (white) vs. Mr. Krake (black). Columns for White and Black moves.

Here is a game won by M. A. Woodward from Marshall at Los Angeles in the latter's recent simultaneous exhibition. The winner is a member of the executive committee of the Los Angeles Chess club and the success of Marshall's visit in the southern metropolis was due in no small part to Mr. Woodward's energy in making the various arrangements, securing publicity, etc.

Earl Simonson, chess editor of the Advance of Staten Island, and W. R. Ellis of Nebraska are playing a Shakespearean game by correspondence. An appropriate quotation from the poet accompanies each move. So far 26 moves have been made. With 17 1/2 KPxP, Ellis wrote: 'This is the fruit of rashness'—Richard III. For his nineteenth move, PxKt ch, Simonson selected this from Trollop and Cressida: 'Strike, fellows, strike! This is the man I seek.'

Table for Game No. 93: Center Counter. Marshall (white) vs. Woodward (black). Columns for White and Black moves.

NOTES BY M. A. W. (a) Very poor. K-R is best. (b) Overkill. RxBKIP seems best.

Here is evidence that the probable author (Francis Bacon) was a chess player. In his famous letter to the earl of Devonshire, explaining his conduct in regard to the unfortunate earl of Essex, Bacon relates a conversation he held with Queen Elizabeth: 'Madam, I see you withdraw your favor from me; and now I have lost many friends for your sake; I shall lose you, too; you have put me, like one of those the French call enfanta perdu, that serve on foot before the horse; so have you put me into matters of Envy without Place, or without Strength; and I know not Chess a Pawn before the King is ever much played upon.'



White—4 Pieces. Solution to prize end game by Binck, printed last week. 1 Kt-Q5 B-QB5 2 P-K4 K-B2 3 P-K4(Q) KxQ

GAME DEPARTMENT Appended are the two games mentioned last week, which Prof. A. W. Ryder won from Rev. E. B. Adams in the northern California vs. southern California correspondence match. The Ruy Lopez especially will be found most instructive and is worth careful study.

PROBLEMS END GAME DEPARTMENT Probably there is no class of end games more difficult than those which consist of rooks and

Table for Game No. 95: Ryder (white) vs. Adams (black). Columns for White and Black moves.

NOTES (a) A line adopted by Lasker against Steinitz, Tarrasch and others. White's superior pawn position and Black's difficulty in turning his queen's bishop into action are a full make-weight for Black's possession of two bishops.

Table for Game No. 96: Bishop's Gambit. Abbot (white) vs. Ryder (black). Columns for White and Black moves.

NOTES (a) White shows good judgment in not winning a pawn by 18 Kt-K7; Kt-K7; 19 R-Q8ch; R-B; 20 R-Rch; N-R; 21 R-Rch; K-B2; 22 R-K1.

Table for Game No. 97: Bishop's Gambit. Abbot (white) vs. Ryder (black). Columns for White and Black moves.

NOTES (a) Questionable point is a correspondence

SOLVERS' LIST Table with columns for Name and residence, and Numbers 61 and 62.

Correspondence E. Halle, city—Problem received. Thanks. E. S. B. Niles—Glad to have you as a solver. Yes, the Steinitz game was a daisy.

MINE MULES ARE SENSITIVE

Realizing that mules have feelings, the superintendent of a coal mine at Brazil, Ind., has issued orders that all the drivers in the employ of the company shall do away with the use of whips. Drivers who are unable to get desired results without the use of the 'blacksnake' have been replaced by men who can persuade the mules to work without beating them.

LATE FAD IN AUTO ROBES

Automobile robes, in the different university colors and bearing either the university seal or a replica in felt of the university mascot, are a novelty much in demand this year. The Yale bulldog on a blue blanket, and the Princeton robe with the tiger's head in orange on a field of black, are representative examples.

SHAMPOO YOURSELF



CUTICURA SOAP

Tonight rub your scalp lightly with Cuticura Ointment. In the morning shampoo with Cuticura Soap. These emollients do much for dry, thin and falling hair, dandruff and itching scalps, and do it speedily, agreeably and economically.

Cuticura Soap and Ointment sold throughout the world. Liberal sample of each mailed free, with 25-p. book. Address 'Cuticura,' Dept. 7G, Boston.

Advertisement for San Francisco Pennants. Features 'CUT THIS OUT' and 'PENNANTS' text, along with an illustration of a pennant and the San Francisco call logo.