

CHESS

By E. J. CLARKE

Alexander Alekhine, who was so much in the limelight after winning the championship, is living in Paris, where he is annotating for publication the recent match games, as well as the 1927 New York tournament games. The latter book was to be annotated by Capablanca. Those familiar with Alekhine's work in the 1924 New York tournament book will have no regret for the change. Indeed, Capablanca has stated that in the field of annotation, Alekhine has no equal.

* * * *

The major 1927-1928 tournament at the Mechanics' Institute Chess Club, with but one round to be played, shows the following standings: E. W. Gruer, State champion, 8½ to 1½; E. J. Clarke, 8½ to 1½; H. Gross, U. of C. champion, 8 to 2; W. Gardner, 8 to 3; R. Hultgren, 7 to 3.

* * * *

Secretary George Goehler of the Institute announces an important fifteen-board team match for Friday night, April 6, at the Mechanics' Institute Chess Club, 57 Post street, between the latter an an All East Bay team, comprising the pick of the U. of C. Chess Club and faculty, and headed by State Champion Gruer.

* * * *

Harry Borochow of the Los Angeles Chess Club, in reply to a letter from Fred N. Christensen of the M. I. C. C. executive committee, suggests Decoration day as a suitable date for a resumption of the telegraphic matches between the two clubs.

* * * *

GAME No. 93

It would be interesting to learn the reaction of chess players to practical abandonment of the P-K4 openings in master tournaments. We confess to being rather weary of the constant procession of Queen's Gambit Declined, and propose to give our clientele a diet of King's pawn games for a change. Here is a real fighting game from the second Steinitz - Blackburne match (1876), won by the former, 7 to 0. That shows how great was Steinitz in his prime:

VIENNA

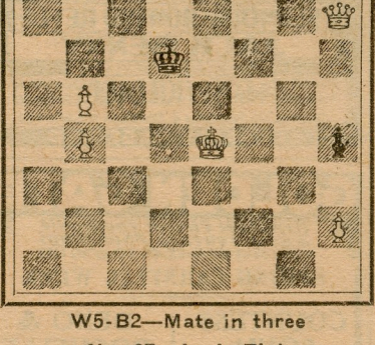
Steinitz White	Blackburne Black	Steinitz White	Blackburne Black
1 P-K4	P-K4	23 R-K4	Q-R3
2 S-QB3	S-KB3	24 P-KR4	P-KS4
3 P-B4	P-Q4	25 P-K6!	PxKP
4 P-Q3	B-QS5	26 Q-R4ch	K-K2
5 PxKP	SxP	27 QxPch	R-Q2
6 PxS	Q-R5ch	28 QxP	R-QB
7 K-K2	BxS	29 Q-K3	K-B2
8 PxB	B-S5ch	30 R-S5	R(B)-Q
9 S-B3	PxP	31 RxP	R-Q7ch
10 Q-Q4!	B-R4	32 K-S3	R(Q7)-Q3
11 K-K3!	BxS	33 R-B4ch	K-K2
12 B-S5ch(a)	P-B3	34 Q-K5	R-Q4
13 PxB	PxB	35 R-87ch	K-K
14 QxKP	Q-R3ch	36 Q-B6	QxQ
15 K-B2	Q-QB3	37 RxQ	R(Q)-Q3
16 Q-Q4	S-R3	38 RxRP	R-QB4
17 B-R3	P-S5!(b)	39 R-S6	K-B
18 BxP	SxB	40 P-R5	R(Q3)-Q4
19 QxS	R-QB	41 RxP	RxRP
20 QR-QS	P-QS3	42 RxR	RxR
21 R-S3	R-Q	43 P-R4	Resigns
22 R-K	R-Q4		

(a) If PxB at once, Black can draw by perpetual, Q-K8 and Q-R5.
 (b) The true master will always be resourceful, no matter how great his plight! If R-Q, then 18 B-Q6."—DeVide.

PROBLEMS

A. J. F.

No. 94—P. H. Williams
1903

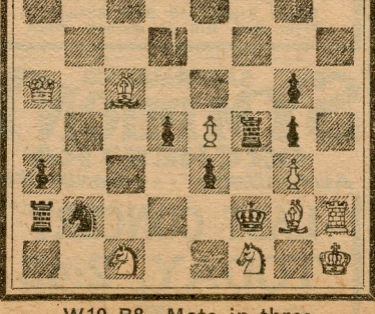


W5-B2—Mate in three

No. 97—A. J. Fink

"Pittsburg Gazette Times," 1916

In what variation does White sacrifice the Queen?



W10-B8—Mate in three

Solution to No. 95—KR-KS7. W. R. S., city; C. Vanderwort, San Rafael; A. Berkowitz, Palo Alto; J. Farber, Reno, Nev.; W. I. Pedrick, Ferndale, (yes, No. 89 should have read Q-QR7); M. D. P., city, problem cannot be used; J. E. E., Los Gatos; L. L. King, Roseville; C. A., Colusa; G. C. Fish, Oakland.