

CHESS

That was a very gracious act on the part of Alexander Alekhine, the gift of a chessboard frock to the juvenile chess champion of Hungary, petite Beta Balasy, pictured in last Sunday's Rotagravure.

* * * *

N. Rosonoer of Petaluma, in sending solutions, writes: "It's not so much the desire to see my printed name as it is to help to prove to your editor in chief the volume of chess readers and thus hope for enlargement of space devoted to chess." That's the spirit!

* * * *

The 1927-1928 major tournament of the Mechanics' Institute Chess Club was concluded last Saturday evening in the deciding game between E. W. Gruer and E. J. Clarke, won by the latter. Final score: E. J. Clarke, 9½ to 1½; H. Gross, U. of C. champion, second, 9 to 2; E. W. Gruer, third, 8½ to 2½.

* * * *

GAME No. 99

KING'S GAMBIT DECLINED

Played at Board 3 in the recent Transbay vs. Mechanics' Institute match:

Clarke White	Fawcett Black	Clarke White	Fawcett Black
1 P-K4	P-K4	17 B-K	Q-B3
2 P-KB4	S-QB3	18 P-K5	PxP
3 S-KB3	B-B4	19 PxP	Q-K2
4 B-S5	P-Q3	20 Q-B5	Q-S4
5 P-B3	B-Q2	21 Q-K4	Q-Q
6 P-Q4	PxP	22 R-Q	K-R
7 PxP	B-S3	23 P-B4	P-S3
8 S-B3	S-B3	24 P-B5	S-K2
9 Castles	Castles	25 B-R4	P-S4
10 Q-Q3	P-QR3	26 BxSP	PxB
11 B-B4	P-R3	27 Q-S4	S-S2
12 B-Q2	B-S5	28 P-B6	S-S3
13 S-K2	Q-K2	29 QxP	K-R2
14 P-KR3	BxS	30 R-B4	S-K3
15 PxS	S-KR4	31 BxS	Resigns
16 K-R2	Q-R5		

E. J. Clarke, Mechanics; E. O. Fawcett, Transbay.

* * * *

GAME No. 100

RETI'S DEFENSE

The following game, from the 1924 New York tournament, although a trifle long, will well repay study. Marshall, after getting a very discouraging start, plays really great chess and holds Capablanca to a draw.

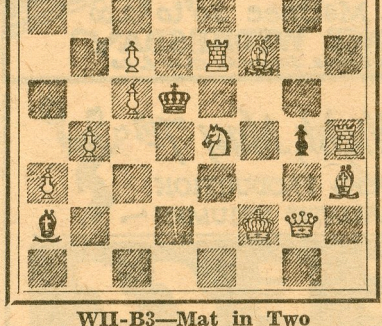
Marshall White	Capa- blanca Black	Marshall White	Capa- blanca Black
1 P-Q4	S-KB3	34 S-K6ch	K-B3
2 S-KB3	P-KS3	35 K-S2	P-KR3
3 P-K3	B-S2	36 P-KR4	K-B2
4 QS-Q2	P-QS3	37 S-B4	R-Q8
5 B-B4	Castles	38 R-K3	R-Q5
6 Q-K2	P-B4	39 S-Q3	RxP
7 P-B3	B-S2	40 S-K5ch	K-B
8 Castles	P-Q4	41 S-Q7ch	K-K
9 B-Q3	S-K5	42 S-K5	K-Q
10 BxS	PxB	43 S-B7ch	K-Q2
11 S-S5	P-K4	44 S-K5ch	K-B2
12 KSxKP	KPxP	45 S-B7	S-B3
13 KPxF	B-R3	46 R-K6	R-Q5
14 P-QB4	QxP	47 RxKSP	R-Q7
15 R-S	S-B3	48 P-B4	RxRP
16 P-QS3	QR-Q	49 R-S7	S-Q5
17 B-S2	Q-Q6	50 SxPch	K-B3
18 QxQ	RxQ	51 S-B7	K-Q2
19 S-KB3	BxB	52 S-K5ch	K-K3
20 RxB	P-B4	53 R-S6ch	K-K2
21 S(K4)- S5	R-K	54 S-S7ch	K-B
22 S-R3	B-S2	55 R-QS7	SxP
23 S-B4	R-Q3	56 R-B7ch	K-K
24 S-Q5	S-K2	57 RxP	S-Q7
25 S-B7	KR-Q	58 R-R5	R-B7
26 R-K2	QR-Q2	59 R-R8ch	K-K2
27 S-K6	BxS	60 P-B5	S-K5
28 PxS	R-Q7	61 K-B3	S-Q3
29 KR-K	RxR	62 R-R7ch	K-B3
30 RxR	R-Q2	63 S-S4ch	KxP
31 S-Q8	K-B	64 S-K3ch	K-S3
32 S-K6ch	K-B2	65 RxP	R-B6
33 S-S5ch	K-S2	66 R-R6	Drawn

PROBLEMS

A. J. F.

No. 103—Rev. J. Jespersen

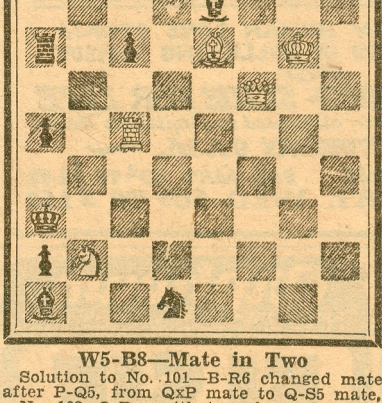
"Incomplete Block"



W11-B3—Mate in Two

No. 104—Dr. F. Rduch

Third Prize, "Budapest Chess Club"



W5-B8—Mate in Two

Solution to No. 101—B-R6 changed mate after P-Q5, from QxP mate to Q-S5 mate, No. 102, Q-Rsq with two changed mates.

Solvers' List—P. Bowater, Pasadena (96-98), (99-100); W. L. Pedrick, Ferndale (96-98); S. L. Bailey, Roseville; J. E. E., Los Gatos (99-100); G. C. Fish, Oakland, (99-100); A. Berkowitz, Palo Alto, (99-100); R. W. King, Willits, RxQ in No. 98 is defeated by RxP.

G. Pring, Alameda, no mate in one try KxS, in answer to discovered check as mentioned.

H. F. M., Mill Valley, see preceding note. K-B5 defeats S-K4 check in No. 96.

P. B., Pasadena: Original problems always welcomed.