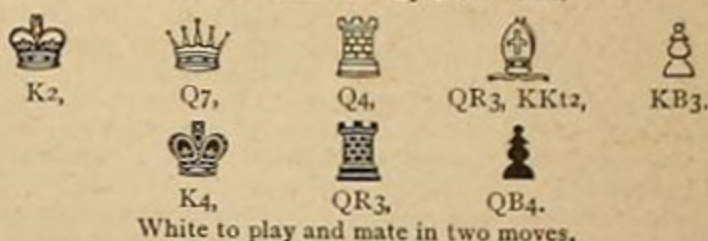


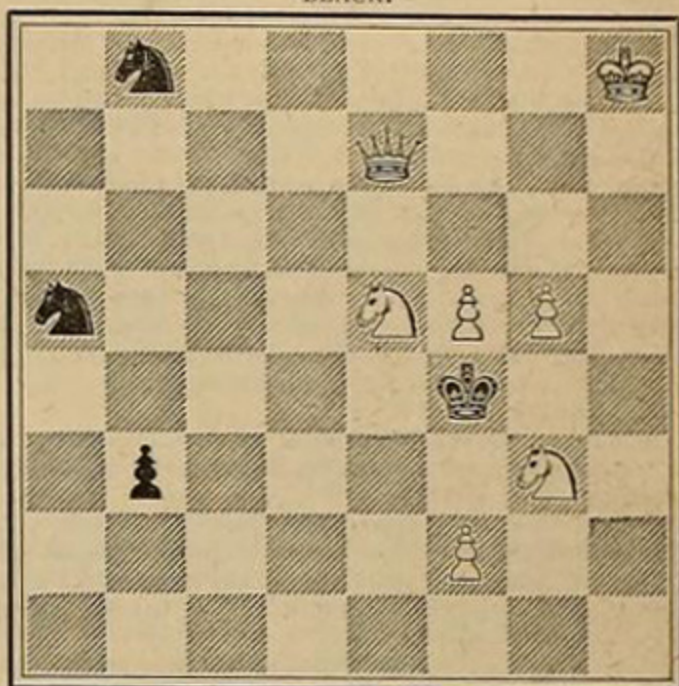
THE CHESSPLAYER.

[All communications for this department should be addressed to "Chess Editor Argonaut, No. 213 Dupont Street, San Francisco, Cal."]

Problem No. XLVII.—By Dr. S. Gold,



Problem No. XLVIII.—By Fr. Dubbe.
BLACK.



Solution of Problem No. XL.

1—Kt Q3	1—K Q4 (a)	(a) 1—	1—K B4
2—Q K3	2—Any move	2—Q B3 ch	2—Any move
3—Q or Kt mates.		3—Q or B mates.	

Answers to Correspondents.

J. A. McQ., Eureka, Cal.—Your solution to No. XLV. is incorrect. If 1 P x P, then 1—P K4 and mate is impossible in three moves.

B. M. P., Eureka, Cal.—See reply to J. A. McQ., in last week's column.

E. A. K., Oroville, Cal.—Your solution to No. XLIII is correct. The problem is faulty, as there is another solution.

During Doctor Zukertort's visit a friendly match of twelve games was played with Mr. Fritz Peipers, six even and six at the odds of Kt., the score standing: Even games, Zukertort, 4; Peipers, 1; drawn, 1. At odds, Zukertort, 1; Peipers, 5. We append two games, one from each of the series:

Game No. 34.

Played 24th of July, 1884, at the Mechanics' Institute.

White. Peipers.	Black. Zukertort.	White.	Black.
1—P K4	1—P K4	14—P KB4	14—P x KP
2—Kt KB3	2—Kt QB3	15—Kt x P	15—B K3
3—B B4	3—P B4	16—KKt B3	16—B x Kt
4—Kt B3	4—Kt B3	17—Kt x B	17—P x P
5—P Q3	5—B B4	18—R x P	18—R x R
6—Castles	6—P Q3	19—Kt x R	19—Q B3
7—B KKt5	7—Kt QR4	20—P Kt3	20—R KB sq
8—B x Kt	8—Q x B	21—R Kt sq	21—P KKt4
9—Kt Q5	9—Q Q sq	22—Q Kt4	22—K R sq
10—P QKt4	10—Kt x B	23—Kt K6 (!)	23—Q B7 ch
11—P x B	11—Kt R4	24—K R sq	24—Q KB4
12—P x QP	12—P x P	25—Q x P	25—Q B6 ch
13—Kt Q2	13—Castles	26—K Kt sq	26—Q B7 ch

Drawn.

Game No. 35.

Played 16th of July, 1884, at Mechanics' Institute.

REMOVE WHITE'S QUEEN'S KNIGHT.

White. Zukertort.	Black. Peipers.	White.	Black.
1—P K4	1—P K4	14—KR Kt sq	14—Q K4
2—B B4	2—P Q4	15—R Kt2	15—P QKt4 (!)
3—P x P	3—P K5	16—B x P	16—QR Kt sq
4—Q K2	4—Kt KB3	17—P B4	17—Kt B4
5—P Q3	5—B Q3	18—QR Kt sq	18—P Kt4
6—P x P	6—Castles	19—P KR4	19—P KB3
7—B KKt5	7—P KR3	20—P x P	20—BP x P
8—B x Kt	8—Q x B	21—R Q sq	21—P QR3
9—Castles	9—Q Kt4 ch	22—B B6	22—R Kt3
10—P KB4	10—B x P ch	23—R R sq	23—K Kt2
11—K Kt sq	11—B Kt5	24—Q QB2	24—KR QKt sq
12—Kt B3	12—B x Kt	25—R Q sq	25—R x P ch
13—P x B	13—Kt Q2	26—Q x R	26—R x Q ch
		27—R x R	27—Q B6

White resigns.

There exists in England many local chess societies, such as the Surrey Chess Association, Sussex Chess Association, Counties Chess Association, but the old and general British Chess Association has been broken up for some years since the death of Lowenthal, we believe, who was its director. Efforts are being made at present to reorganize this society, and a meeting has been called at Simpson's Divan for July 24th next to adopt the measures deemed necessary for the success of the project. As all that can contribute toward developing and encouraging a taste for chess is received with less of indifference in England than in other countries, we are therefore certain that in a short time the British Chess Association will be reorganized.—*La Stratégie*, July, 1884.

There are now thirty-two newspaper chess columns in the United States and Canada. Fourteen years ago there were but three.

In the correspondence match between the cities of Paris and Vienna, play has been suspended until September 15th.

Burton, author of the "Anatomy of Melancholy," says: "Chess-play is a good and wittie exercise of the minde."