

# THE CHESS-PLAYER.

[All communications for this department should be addressed to "Chess Editor Argonaut, 213 Dupont Street, San Francisco, Cal."]

The Chess Editor is absent for a few weeks at the East, during which he requests the indulgence of his correspondents. All solutions and other communications will be acknowledged upon his return.

Problem No. CVIII.—By G. D. Fonda, Vienna.

*From Nuova Rivista degli Schacchi.*

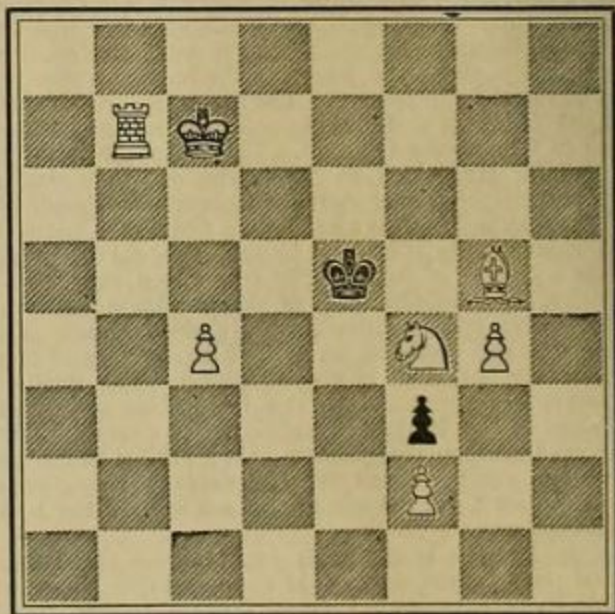
WHITE—King at QKt2; Queen at KKt7; Rook at Q4; Bishop at Q5; Pawns at KB4, QKt3, QR5.

BLACK—King at QB4; Rook at KR3; Knights at KR2, KB6, Pawns at KR7, KB3, Q6, QKt4.

White to play and mate in two moves.

Problem No. CVII.—By D. W. Clarke, Siberia.

BLACK.



WHITE.

White to play and mate in three moves.