

**Exhibition Wednesday****Top U. S. Chess Player,  
Reshevsky, to Play Here****By GEORGE KOLTANOWSKI**

Sammy Reshevsky, generally considered the best chess player in the United States, will play 40 boards simultaneously in the Riviera Room of the Hotel Riche-lieu, Van Ness avenue and Geary street, Wednesday.

Reshevsky, a native of Poland, held the U. S. chess championship from 1936 to 1946. Now 42, he achieved early fame as a child prodigy. At the age of 8 he began a series of electrifying simultaneous chess exhibitions throughout Europe and the United States.

Shortly after his arrival in this country, he retired temporarily to acquire an education.

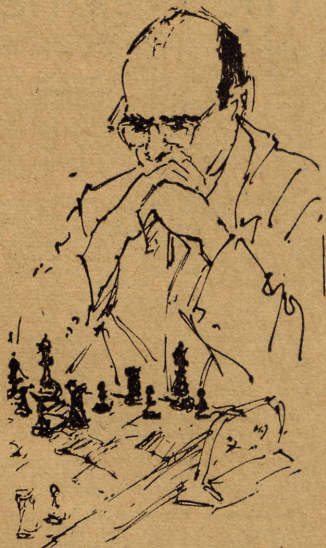
At the age of 20 he returned to chess competition and captured the Western tournament in Tulsa in 1931. His first big success was in Syracuse in 1934 when he took first place ahead of Kashden, Fine and other masters.

The next year he made his international debut, winning the Margate tournament ahead of Capablanca.

He came third in the battle for the world title in 1948 and tied for second in the recent Candidates' tournament in Switzerland.

Reshevsky's "secret weapon" is his ability to fight back in difficult positions. He is now a full-fledged professional. Grand-master Reshevsky lives in Brooklyn with his wife and two children.

Wednesday's exhibition will begin at 7:30 p. m. Reserved spectator seats are 50 cents. Reservations may be made with C. McGinley, 2763 Chelsea drive, Oakland. The show is being



**SAMMY RESHEVSKY**  
Native of Poland

sponsored by the Chess Friends of Northern California, Inc.

Played in Boston, 1944:

White: Reshevsky; Black: Vasconcellos.

**FRENCH DEFENSE**

- |           |       |           |          |
|-----------|-------|-----------|----------|
| 1.P-K4(a) | P-K3  | 14.P-K6   | N-B3(c)  |
| 2.P-Q4    | P-Q4  | 15.PxPch  | KxP      |
| 3.P-K5    | P-QB4 | 16.B-R4   | N-QN5(d) |
| 4.PxP(b)  | N-Q2  | 17.N-K5ch | K-B1     |
| 5.N-KB3   | BxP   | 18.BxN    | NxB      |
| 6.B-Q3    | N-K2  | 19.BxPch  | NxB(e)   |
| 7.O-O     | N-QB3 | 20.RxPch  | B-K2(f)  |
| 8.B-KB4   | Q-B2  | 21.Q-R5   | R-B1     |
| 9.N-B3    | P-QR3 | 22.Q-N5ch | K-R1     |
| 10.R-K1   | Q-N3  | 23.N-N6ch | PxN      |
| 11.B-N3   | QxP   | 24.Q-R6ch | K-N1     |
| 12.NxP    | PxN   | 25.QxPch  | K-R1     |
| 13.R-N1   | Q-R6  | 26.R7xB   | Resigns  |

(a) Reshevsky playing P-K4 instead of his usual 1.P-Q4 is quite sensational. (b) 4.P-B3, 4.N-KB3 or 4.Q-N4 are also possible. (c) Fine feels that PxP was correct here. (d) B-K2 was best. (e) See diagram. The fireworks really start now! (f) If 20...BxR: 21.Q-N4ch.K-B3: 22.Q-B3ch, and mate in a few moves. Reshevsky considers this game one of his best.