

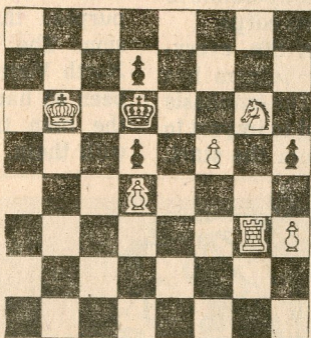
# Chess

By George Koltanowski

*SFCHRON 20 JUL 72*

PROBLEM

By Otto Metzger, Switzerland



22

White to play and mate in four moves.

## THE SPASSKY-FISCHER GAMES IN REVIEW

The wars are still raging here in Reykjavik over what happened in the first game of the world-title match between Boris Spassky and Robert Fischer. Every master, expert and kibitzer has ideas on Fischer's loss. Let us look at the fateful position after the 28th move of White: White: Spassky: King on Q3; Bishop on QB1; Pawns on QR3, QN5; K3, KB2, KN2 and KR2. (8 pieces).

Black: King on KB1; Bishop on Q3; Pawns on QR2, QN2; K3; KB3, KN2 and KR2. (8 pieces). Fischer played the electrifying move: 29 . . . BxP-R7. There followed 30. P-N3, P-KR4; 31. K-K2, P-R5; 32. K-B3. And here Fischer played 32 . . . K-K2. Some were of the opinion that the correct continuation would be 32 . . . P-KN4; then there can follow: 33. K-N2, P-N5; 34. KxB, P-R6; 35. P-K4, K-K2; 36. P-B3, P-B4; 37. PxBP, PxBP; 38. Pxp, Pxp; 39. B-K3, P-N3; (best); 40. K-N1, K-Q3; 41. K, B1, K-Q4; 42. B-N1, K-B5; 43. K-K2, KxP; 44. K-K3, K-R5; 45. K-B4, KxP; 46. KxP, P-R7; 47. BxP, P-N4; 48. K-B5, P-N5; 49. P-N4, P-N6; 50. B-K5, P-N7; 51. Pxpch, KxB; 52. P-N5, P-R4; 53. P-N6, P-R5; 54. P-N7, P-R6; 55. P-N8-Q, P-R7; DRAW.

FISCHER definitely missed a draw on the 40th move according to Tigran Petrosian, USSR, ex-world champion:

Position after White's 40th move: King on KR4, Bishop on QB5; Pawns on QR5, P-QN6 and K3. (5 pieces) Black: King on K5, Pawns on QR3, QN2; K3, KB4 and KN2. (6 pieces) Here Fischer played 40 . . . P-B5. With 40 . . . K-Q4; 41. B-Q4, P-K4; 42. B-B3, P-B5; 43. Pxp, Pxp; 44. K-N4, K-B4; Black draws easy, as after 45. P-R5, the Black king goes to QR1 via B1, gives up the two pawns on the King's side and White cannot force the win.