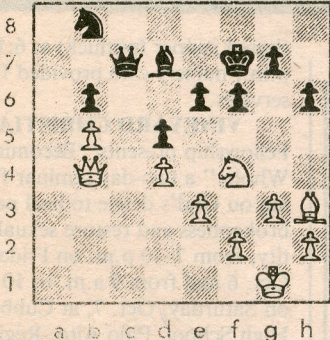


# Chess



By Frisco Del Rosario

## SEIRAWAN-KOGAN White to play and win.



### GRANDMASTER SEIRAWAN WINS FIDE CONTINENTAL ACTION TOURNAMENT

Grandmasters Yasser Seirawan, Joel Benjamin and Dimitri Gurevich each scored 9½-3½ at the 1989 FIDE Continental Action Chess Championship held September 22-24 at the Dunfey Hotel in San Mateo. Seirawan was awarded the first place trophy and \$5,000 on tiebreaks. Benjamin earned second place and \$4,000. Gurevich won \$3,000 for third.

Fifteen grandmasters and 10 international masters were among the 263 participants competing in six sections for the \$50,000 prize fund.

#### San Mateo 1989

White: Hugh Tobin  
Black: Dimitri Gurevich  
Pirc Defense

- |                         |                          |
|-------------------------|--------------------------|
| 1. e4 d6                | 21. Qe3 Be6              |
| 2. d4 Nf6               | 22. f4 Bc7               |
| 3. Nc3 g6               | 23. Kh1 Rfd8             |
| 4. Nf3 <sup>1</sup> Bg7 | 24. Ng3 Bb6              |
| 5. Be2 O-O              | 25. Qf3 Rd3              |
| 6. O-O c6 <sup>2</sup>  | 26. Rd3 Qc5              |
| 7. a4 Nbd7              | 27. Ne2 Re8              |
| 8. h3 e5                | 28. Be6 Re6              |
| 9. de de                | 29. Nd4 Rd6              |
| 10. Be3 Qe7             | 30. a5 Qa5               |
| 11. Nd2 Nc5             | 31. Qd1 Qc5              |
| 12. Bc4 Nh5             | 32. c3 Qc4 <sup>4</sup>  |
| 13. Nb3 Nb3             | 33. e5 Rd8               |
| 14. Bb3 Nf4             | 34. f5 c5                |
| 15. Qf3 Ne6             | 35. e6 cd                |
| 16. Rfd1 Nd4            | 36. e7 Re8               |
| 17. Bd4 ed              | 37. f6 Qe6               |
| 18. Ne2 d3 <sup>3</sup> | 38. Qf3 dc               |
| 19. Rd3 Bb2             | 39. Rc3 Qe1              |
| 20. Rad1 Be5            | 40. Resigns <sup>5</sup> |

#### NOTES:

1. The Classical Variation of the Pirc Defense is enjoying renewed popularity. White counts on simple, rapid development to secure an edge and can play to win while taking none of the risks involved with the Austrian Attack (4. f4).
2. Black is much higher rated than his opponent and avoids 6...Bg4, the well-analyzed main line, and 6...c5, which leads to a queenless middlegame without prospect after 7. dc.
3. Increasing the scope of the bishop on g7. Black makes fine use of the dark squares.
4. Threatening ...c5.
5. 40. Kh2 Bg1 41. Kh1 Bd4 etc.

#### San Mateo 1989

White: Joel Benjamin  
Black: John Brooke  
English Opening

- |                         |                 |
|-------------------------|-----------------|
| 1. c4 c5                | 9. Nb5 Ne5      |
| 2. Nf3 Nc6              | 10. Ba3 Qc6     |
| 3. Nc3 g6               | 11. Nd6 Kd8     |
| 4. e3 Bg7               | 12. f4 Nc4      |
| 5. d4 e6                | 13. Bc4 Qg2     |
| 6. dc Bc3? <sup>1</sup> | 14. Nf7 Ke8     |
| 7. bc Qa5               | 15. Qd6 Qh1     |
| 8. Nd4 <sup>2</sup> Qc5 | 16. Bf1 Resigns |

#### NOTES:

1. Black obtains more pressure and doesn't highlight his dark square weaknesses by playing ...Qa5 and delaying ...Bc3.
2. Cutting off the a1-h8 diagonal so if 8...Qc3 9. Bd2 is embarrassing. The knight is also headed for c7 or d6 via b5.

**SOLUTION:** 1. Be6! Be6 2. Qf8! Kf8 3. Ne6 Ke7 4. Nc7 Kd6 5. Ne8 wins.

#### PLACES TO PLAY

**Redwood City Chess Club:** Meets Mondays, First Baptist Church, James and Hudson. Informal games. John Vitlacil 367-9368.

**Burlingame CC:** Meets Thursdays, Lions Club, 990 Burlingame Ave. USCF tnmts, informal play. Wilfred Goodwin, 593-0054.

**Palo Alto CC:** Tuesday eves, days Sat. & Sun. 3800 Middlefield. USCF & blitz tnmts, informal play. Steve Farmer, 329-2487