

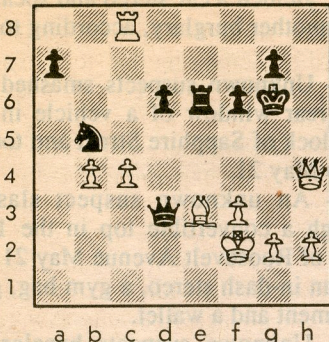
Chess



By Frisco Del Rosario

ONG-JOHNSON

White to play and win.



SEQUOIA HIGH SCHOOL TO HOST CHESS/PIZZA GATHERING

The Sequoia High School chess team will play host to local chessplayers 7 p.m. March 31 on the Sequoia campus at Broadway and Brewster in Redwood City. The team, which finished second in the Northern California High School Team Championships in March, is offering friendly chess competition and pizza. Information: faculty advisor John Kreutzmann 369-1412

MILLBRAE EXPERT STRIKES TWICE WITH FROM'S GAMBIT

Expert Allen Ong of Millbrae has won two Burlingame Chess Club tournament games recently by springing a trap peculiar to From's Gambit.

The Danish player Severin From developed his gambit in the mid-19th century as a reply to Bird's Opening (1.f4).

The Burlingame Chess Club will conduct a World Rapid Chess-sanctioned action chess (30 minutes per player per game) quadrangular 7:30 p.m. June 13.

Burlingame 1991

White: Glen Schabacker

Black: Allen Ong

From's Gambit

- | | |
|--------------------------|---------------------------|
| 1. f4 e5 | 18. Re1 Kd8 |
| 2. fe5 d6 | 19. Qh8 Kc7 |
| 3. ed6 Bd6 ¹ | 20. Kd2 Bd7 |
| 4. Nf3 g5 ² | 21. d4 Qd6 |
| 5. g3 g4 | 22. d5 c5 |
| 6. Nh4 Ne7 ³ | 23. Bf1 Qf4 |
| 7. d3 ⁴ Ng6 | 24. Kd3 ⁹ Na6! |
| 8. Ng6 hg6 | 25. Qe5 ¹⁰ Qe5 |
| 9. Bg2 Rh2! ⁵ | 26. Re5 Re8 |
| 10. Rh2 Bg3 | 27. Re8 Be8 |
| 11. Kd2 Bh2 | 28. Kc4 Kd6 |
| 12. Qh1 Qd6 | 29. a3 Nc7 |
| 13. Nc3 ⁶ f5 | 30. a4 b6 |
| 14. b3 c6 ⁷ | 31. Bg2 a6 |
| 15. Ba3 ⁸ Bf4 | 32. Kd3 Ke5 |
| 16. e3 Be3 | 33. Resigns |
| 17. Ke3 Qa3 | |

NOTES:

- From's Gambit is very tricky. Black's first try at a swindle is 4...Qh4 5.g3 Qg3! 6.hg3 Bg3 mate!
- Black is playing to dislodge the knight that guards White's kingside, but 4...Nf6, developing, is fundamentally sounder.
- Planning ...Ng6 with continued assault on the weakened black squares around White's king.
- Deprives White of an important defensive move. 7.d4 Ng6 8.Ng6 hg6 9. Qd3 (guarding g3) Nc6 10.c3 Qe7 11.Bg2 leads to a small edge for White.
- Another trick native to From's Gambit.
- Development is preferable to entering lines like 13. Bb7 Qb4 14. c3 (14. Nc3 Bf4) Bf4 15. Kd1 Bb7 16. Qh8 Qf8 17. Qf8 Kf8 18. Bf4 Na6 19. Nd2 Ke7.
- Too many pawn moves. Better is 14...Nc6.
- In effect White is sacrificing his e-pawn so his rook can play on the e-file. Less shaky is 15. Bb2 Nd7 16. e4.
- White sees that 24. Kd1 allows Black to happily trade queens with 24...Qd4, but 24.Kd3 allows that and more.
25. Qa8 Nb4 26. Ke2 Qh2! 27. Ke3 (27. Kd1 Qc2 mate; 27. Bg2 Qg2 28. Ke3 Nc2 wins) f4 28. Ke4 Bf5 29. Ke5 f3 30. Kf6 Qh4 wins.

Burlingame 1991

White: Rick LaVoice

Black: Allen Ong

From's Gambit

- | | |
|------------|-------------|
| 1. f4 e5 | 7. Bg2 Ng6 |
| 2. fe5 d6 | 8. Ng6 hg6 |
| 3. ed6 Bd6 | 9. d4 Rh2! |
| 4. Nf3 g5 | 10. Rh2 Bg3 |
| 5. g3 g4 | 11. Resigns |
| 6. Nh4 Ne7 | |

SOLUTION: 1.Qg4 Kf7 (1...Kh7 2.Qh5 mate) 2.Qh5 Qg6 3.Qg6 Kg6 4.cb5 wins.