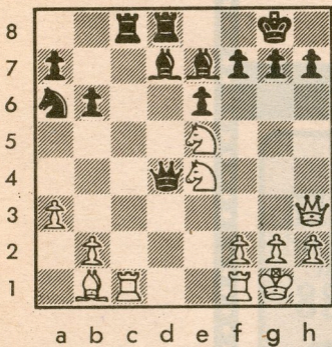




By Frisco Del Rosario  
**PAFNUTIEFF-NN**  
 White to play and win.



## THE MID-PENINSULA'S MASTER OF COMBINATION

Vladimir Pafnutieff is a familiar kibitzer at the Burlingame Chess Club, paying close attention to his students' games (he once tutored co-U.S. champion Yasser Seirawan), but primarily looking for combinative possibilities.

Pafnutieff has an eye for attack and combination. He has won a number of brilliancy prizes during his tournament career and is working on a second edition of his book *How to Create Combinations*.

Pafnutieff, 79, is among the 20 highest-rated players in the United States over the age of 65. He still studies chess every day.

### Santa Monica 1968

White: Vladimir Pafnutieff

Black: B. Antman

Slav Defense D16

- |     |                       |     |                      |
|-----|-----------------------|-----|----------------------|
| 1.  | d4 d5                 | 13. | Nb5 cb               |
| 2.  | c4 c6 <sup>1</sup>    | 14. | Ba8 c3               |
| 3.  | Nc3 Nf6               | 15. | Qd5 a6               |
| 4.  | Nf3 dc                | 16. | ab! <sup>6</sup> c2  |
| 5.  | a4 Bf4 <sup>2</sup>   | 17. | O-O! cdQ             |
| 6.  | Ne5 Bh5               | 18. | Rd1 <sup>7</sup> Bg4 |
| 7.  | Bg5 <sup>3</sup> Qa5  | 19. | Qd4 Qd7              |
| 8.  | Qd2 b5                | 20. | ba <sup>8</sup> Qd4  |
| 9.  | g4 <sup>4</sup> Ng4   | 21. | Rd4 Bd7 <sup>9</sup> |
| 10. | Bg2 Ne5               | 22. | a7 Nc6               |
| 11. | de b4                 | 23. | Rd7! Na7             |
| 12. | Rd1! <sup>5</sup> Qc7 | 24. | Ra7 Resigns          |

#### NOTES:

- Black supports his center pawn without hemming in his queen bishop with ...e6.
- Rather than the very solid and popular 5...Bf5, Black plays an idea of Alekhine's which restrains White's e-pawn by pressuring the d1-h5 diagonal.
- Two games played in the Soviet Union in 1986 went 7. f3 (more direct) Nfd7 8. Nc4 e5 9. Ne4 Bb4 10. Bd2 Qe7 11. de O-O 12. Rc1 and White's pieces were better coordinated in Zaid-Huzman (12...Na6) and Dohojan-Bareev (12...Bg6).
- The sacrifice of the second pawn gains an important tempo — Black's queenside counterplay is stalled and White can put heavy pressure on c6.
- Threatening mate in two with Bc6.
- Threatening to deflect the black queen from the defense of d7 with b6!
- Renewing the threat of b6.
- Threatening a7 winning.
- White wins after 21...Na6 22. Bc6 Bd7 23. Bd7 Kd8 24. Bb5.

### New York 1973

White: James Sherwin

Black: Andrew Soltis

Slav Defense D16

- |    |                    |     |                      |
|----|--------------------|-----|----------------------|
| 1. | d4 <sup>1</sup> d5 | 9.  | g4 Bg6               |
| 2. | c4 c6              | 10. | Qb7 Nb4              |
| 3. | Nf3 Nf6            | 11. | Bg2 Nfd5             |
| 4. | Nc3 dc             | 12. | Nd5 cd               |
| 5. | a4 Bg4             | 13. | Bf4 Nc2 <sup>2</sup> |
| 6. | Ne5 Bh5            | 14. | Kf1 Qc8!             |
| 7. | Nc4 e6             | 15. | Resigns              |
| 8. | Qb3 Na6            |     |                      |

#### NOTES:

- Grandmaster Soltis is now the most successful chess journalist in the country. International master Sherwin represented the United States in the Portoroz, Yugoslavia interzonal in 1958. He went on to become vice chairman of the GAF chemical company in New Jersey. He later became involved in a scheme to manipulate the price of Union Carbide stock after a failed takeover bid. He was sentenced March 30 to six months in prison.
- 13...dc 14. Bc7.

**SOLUTION:** 1. Qh7! Kh7 2. Nf6 Kh8 3. Nf7#.

#### PLACES TO PLAY

**Redwood City Chess Club:** Meets Mondays, First Baptist Church, James and Hudson. Informal games. John Vitlacil 367-9368.

**Burlingame Chess Club:** Meets Thursdays, Lions Club, 990 Burlingame Ave. USCF tnmts, informal play. Wilfred Goodwin, 593-0054.