

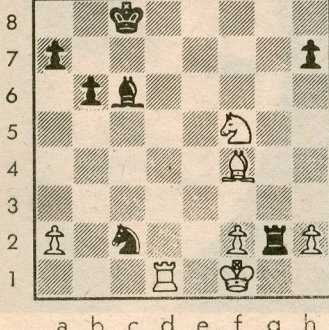
# Chess



By Frisco Del Rosario

## FISCHER-SHERWIN

White to play and win.



### AMERICAN INTERZONALIST GUILTY OF STOCK MANIPULATION

International master James Sherwin, who represented the United States in the 1958 Portoroz, Yugoslavia interzonal, was found guilty Dec. 13 of eight counts of stock manipulation.

The GAF Corp. of Wayne, New Jersey and vice chairman Sherwin were indicted in July 1988 for trying to boost the price of Union Carbide shares before GAF was to sell the Union Carbide stake it accumulated in a failed take-over bid.

Sentencing is set for March 9. Sherwin could get up to five years in jail and a fine of \$250,000 on each count. Lawyers for Sherwin and chemical company GAF said they will appeal.

Sherwin, 56, placed third in the 1958 U.S. championship and zonal in New York. The top two finishers, Bobby Fischer and Sammy Reshevsky, qualified for the interzonal. Reshevsky chose not to go; Sherwin took his place.

#### New Jersey Open 1957

White: Bobby Fischer

Black: James Sherwin

King's Indian Attack

- |     |                       |     |                           |
|-----|-----------------------|-----|---------------------------|
| 1.  | e4 c5                 | 18. | Nh7! Nh7 <sup>6</sup>     |
| 2.  | Nf3 e6                | 19. | h5 Nh4                    |
| 3.  | d3 <sup>1</sup> Nc6   | 20. | Bf4 Qd8                   |
| 4.  | g3 Nf6                | 21. | gh <sup>7</sup> Rb7       |
| 5.  | Bg2 Be7               | 22. | h6! <sup>8</sup> Qh4      |
| 6.  | O-O O-O               | 23. | hg Kg7                    |
| 7.  | Nbd2 Rb8 <sup>2</sup> | 24. | Re4 <sup>9</sup> Qh5      |
| 8.  | Re1 d6                | 25. | Re3 f5                    |
| 9.  | c3 b6 <sup>3</sup>    | 26. | Rh3 Qe8                   |
| 10. | d4 Qc7                | 27. | Be5 <sup>10</sup> Nf6     |
| 11. | e5 Nd5 <sup>4</sup>   | 28. | Qd2 Kf7                   |
| 12. | ed Bd6                | 29. | Qg5 Qe7                   |
| 13. | Ne4! <sup>5</sup> c4  | 30. | Bf6 Qf6                   |
| 14. | Nd6 Qd6               | 31. | Rh7 Ke8                   |
| 15. | Ng5 Nce7              | 32. | Qf6 Rh7 <sup>11</sup>     |
| 16. | Qc2 Ng6               | 33. | Bc6 Resigns <sup>12</sup> |
| 17. | h4 Nf6                |     |                           |

#### NOTES:

1. One of the contributing factors to ex-world champion Fischer's success was his absolute faith in his limited repertoire. As Black, he played the Sicilian and King's Indian defenses. As White, he played 1. e4 and, if 1...e5, he aimed for a Ruy Lopez. Against almost everything else, he entered the King's Indian Attack. Fischer was always better prepared than his opponents in the opening.

2. In one of the most strangely memorable annotations in chess literature, Fischer wrote in *60 Memorable Games*, "Sherwin slid the rook here with his pinky, as if to emphasize the cunning of this mysterious move." There's nothing mysterious, however — Sherwin was removing his rook from the warming h1-a8 diagonal and enforcing his ...b5 advance.

3. 9...b5 is a more aggressive bid for queenside counterplay. Fischer recommended it as well, giving 9...b5 10. d4 cd! 11. cd d5 as equal.

4. Fischer gives 11...de 12. de Nd7 13. Qe2 Bb7 as Black's best try. After 14. h4, White "has a bind, but Black's game may be tenable."

5. Threatening Nd6 and c4, then Bf4.

6. 18...Kh7 19. Bf4.

7. 21. Bb8? Ng2 22. Kg2 Bb7 23. f3 Qb8 (Fischer).

8. Black seizes the initiative after 22. Bb7 Bb7 (Fischer).

9. Threatening Be5.

10. Fischer could have won two exchanges here, he said, with 27. Bh6 Kg8 28. Bf8 Qf8 29. Bb7, but he wanted more.

11. 32...Rf6 33. Bb7.

12. 33...Bd7 34. Qe6.

**SOLUTION:** 1. Ne7 Kb7 2. Nc6 wins (2...Kc6 3. Rc1).

#### BURLINGAME CHESS CLUB NEWS

Experts Robert Armes and Barry Nelson won the Burlingame CC November/December Swiss with four points out of five. A new tournament begins Jan. 4 at 990 Burlingame Ave., Burlingame. Wilfred Goodwin 593-0054.