

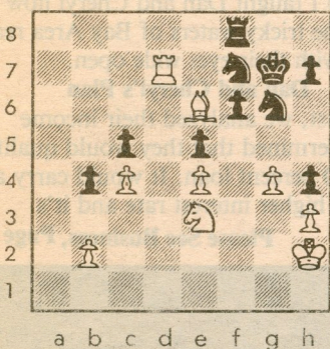
Chess



By Frisco Del Rosario

RUDOLPH-NEELY

White to play and win.



LOS ANGELES EXPERT WINS U.S. WOMEN'S CHAMPIONSHIP

Los Angeles expert Alexey Rudolph won the 1989 U.S. Women's Invitational Chess Championship held July 5-17 in Spartanburg, SC.

By winning this event, Rudolph earned the right to represent the U.S. in the upcoming Women's FIDE Interzonal and also achieved the FIDE International Women's Master title.

Spartanburg 1989

White: Ruth Donnelly

Black: Shernaz Mistry-Kennedy

Dutch Defense

- | | |
|-------------------------|---------------------------|
| 1. d4 ¹ f5 | 17. Nf4 Qf7 |
| 2. c4 e6 | 18. Nfd3 g5 ⁶ |
| 3. g3 Nf6 | 19. e4 ⁷ de |
| 4. Bg2 d5 ² | 20. fe Nde4 |
| 5. Nc3 c6 | 21. Ne4 fe |
| 6. cd ³ ed | 22. Be4 ⁸ Qh5 |
| 7. e3 Be7 | 23. Ne5 Be6 ⁹ |
| 8. Nge2 O-O | 24. Bf3 g4 |
| 9. O-O Qe8 ⁴ | 25. Bg2 Bd5 ¹⁰ |
| 10. a3 ⁵ a5 | 26. Rf5 Qe8 |
| 11. Na4 Nbd7 | 27. Bh6 ¹¹ Bg2 |
| 12. Nf4 Qf7 | 28. Rg5 Qg6 |
| 13. Qc2 Ne4 | 29. Rg6 Kh8 |
| 14. f3 Nd6 | 30. Bg7 Kg8 |
| 15. Nc5 Nf6 | 31. Bf6 Resigns |
| 16. Nfd3 Qh5 | |

NOTES:

- Donnelly has for many years been one of America's top women players. Kennedy tied for second in the event and earned the FIDE Woman Master title.
- Not even world champion Botvinnik was completely able to save the reputation of the Stonewall Dutch. Black claims a fair share of the center and plans to attack on the kingside after developing around the c6-d5-e6-f5 pawn formation. On occasion, Black will defend an ending with his white-squared bishop against a knight on e5. Nothing is perfect.
- Releasing the central tension to early and opening the e-file for Black.
- The standard Dutch route to the kingside.
- Naturally White's chances rest on the queenside.
- Black is right to refuse the draw. The opportunities along the e-file are greater now that White has played f3, weakening the e3 pawn. 18...g5 is too loosening, however. Black has a slower but safer development in ...Kh8, ...Be6 and ...Rae8.
- White neatly eliminates her static weakness while attacking the g-pawn.
- Suddenly, it's White attacking on the kingside.
- Capturing the threatening bishop may be more important here.
- 25...Nd5 is better for three reasons — Black will threaten to assume control of the f-file after ...Rf1 and ...Rf8, the knight will show more influence from the center and foremost, Rf5 isn't allowed.
- White threatens more than the f8 rook, but Black misses the real point.

SOLUTION: 1. Nf5 Kg8 2. Bf7 wins (2...Rf7 3. Nh6)

BURLINGAME CHESS CLUB NEWS

Master Peter Thiel won the Burlingame CC June/July Swiss with a 5-0 score. Ivan Nikolic was second at 4-1. A new USCF-rated five-round Swiss begins August 10 at 7:30 p.m. at the Burlingame Lions Club, 990 Burlingame Ave. For information, Wilfred Goodwin, 593-0054.

PLACES TO PLAY

Redwood City Chess Club: Meets Mondays, First Baptist Church, James and Hudson. Informal games. John Vitlacil 367-9368.

Burlingame CC: Meets Thursdays, Lions Club, 990 Burlingame Ave. USCF tnmts, informal play. Wilfred Goodwin, 593-0054.

Palo Alto CC: Tuesday eves, days Sat. & Sun. 3800 Middlefield. USCF & blitz tnmts, informal play. Steve Farmer, 329-2487.

We welcome your games, positions and comments.