

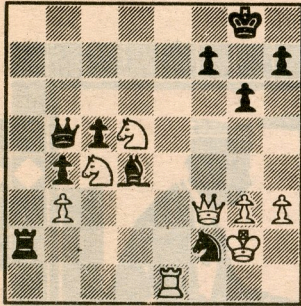
Chess



By Frisco Del Rosario

SHIRAZI-BENJAMIN

Black to play and win.



GMs TO MEET IN SAN FRANCISCO PLAYOFF FOR TWO INTERZONAL BERTHS

Grandmasters Joel Benjamin, Nick de Firmian and Tony Miles play off in a double round robin 2 p.m. May 10-15 at the Mechanics Institute Chess Club at 57 Post St. in San Francisco to determine the United States' final two representatives in the 1993 world championship cycle.

Every three years the U.S. championship is a FIDE (international chess federation) zonal tournament, which qualifies leaders to go on to interzonal competition. Interzonal winners become world championship candidates.

The 1989 U.S. championship provided six interzonal spots. Benjamin, de Firmian and Miles finished in a 5th-7th tie. The playoff will eliminate one.

Cambridge Springs 1988

White: Nick de Firmian

Black: Tony Miles

Irregular Defense

- | | | | |
|-----|----------------------|-----|-----------------------------------|
| 1. | e4 d6 | 11. | Nd5 ³ Bc5 ⁴ |
| 2. | d4 Nf6 | 12. | Kh1 Bd4 |
| 3. | Nc3 c6 ¹ | 13. | e6! fe |
| 4. | f4 Qa5 | 14. | Bc7 Qa4 |
| 5. | Bd3 e5 | 15. | Ne7 Kh8 |
| 6. | Nf3 Bg4 | 16. | Ng5! h5 ⁵ |
| 7. | de de | 17. | Rf8 Nf8 |
| 8. | fe Nfd7 | 18. | Qf1 Nbd7 |
| 9. | Bf4 Bb4 | 19. | Qf7 Nf6 |
| 10. | O-O O-O ² | 20. | e5 Resigns |

NOTES:

1. Doesn't help Black develop like Pirc's 3...g6.
2. Better than spending a bishop on 10...Bc3 11. bc Qc3 because Black would rather regain his pawn on e5 — he can't capture yet (10...Bf3 11. Qf3 Ne5? 12. Be5 Qe5 13. Qf7) so he safely castles.
3. Fairly typical of the style professionals like de Firmian must play in order to earn a payday at a Swiss System event (though this wasn't a Swiss).
4. White has terrific potential if Black accepts the sacrifice, but de Firmian recommends 11...cd 12. ed Be7 (protecting g5 against Bh7 and Ng5).
5. 16...Bd1 17. Rf8 Nf8 19. Nf7#.

Hastings 1974

White: Tony Miles

Black: Michael Basman

Sicilian Defense

- | | | | |
|-----|---------------------|-----|---------------------------|
| 1. | e4 c5 | 11. | Rad1 O-O-O |
| 2. | Nf3 b6 ¹ | 12. | Ba6 h6 |
| 3. | d4 cd | 13. | Nd5 Ba6 |
| 4. | Nd4 Bb7 | 14. | Qa6 Kb8 |
| 5. | Nc3 Nf6 | 15. | Bf4 d6 |
| 6. | Bd3 Qc8 | 16. | Ne7 Qe4 |
| 7. | O-O g6 | 17. | Rfe1 Qf4 |
| 8. | Bg5 Bg7 | 18. | Rd4! Qg5 |
| 9. | Qe2 Nc6 | 19. | Rc4! Resigns ² |
| 10. | Nc6 Qc6 | | |

NOTES:

1. The free-thinking English IM's experimentation with this Sicilian line sparked some interest at that time, but it commits Black's queenside too soon.
2. White threatens the lovely 20. Rc7!! Kc7 21. Qa7#. If 19...d5 20. Nc6 Kc7 21. Qa7 Kd6 22. Qe7# and 19...Nd5 20. Nc6 Kc7 21. Qa7#.

New York 1979

White: Joel Benjamin

Black: Francis

- | | | | |
|----|---------------------------------|-----|-----------------------|
| 1. | e4 c5 | 9. | Ne5 ³ Qc8 |
| 2. | Nc3 e6 | 10. | Re1 Be7 |
| 3. | Nf3 d5 | 11. | Bg5 Nbd7 ⁴ |
| 4. | ed ed | 12. | Bh3 Bc6 |
| 5. | d4 ¹ c4 ² | 13. | Bf6 gf |
| 6. | g3 b6 | 14. | Nf7! Kf7 |
| 7. | Bg2 Bb7 | 15. | Qh5 Kf8 |
| 8. | O-O Nf6 | 16. | Be6 Resigns |

NOTES:

1. This position more likely occurs in the Exchange French: 1. e4 e6 2. d4 d5 3. ed ed 4. Nf3 c5 5. Nc3.
2. His sixth pawn move puts Black behind for good.
3. Threatening Nc4.
4. Inviting another pin, but if 11...O-O 12. Nc4.

SOLUTION: 1...Nd3 wins (2. Re2 Ne1).