

# CHESS

**BY ISAAC KASHDAN**
**INTERNATIONAL GRANDMASTER**

 Address letters to Chess Editor, L.A. Times  
 Los Angeles 53, Calif.

## FISCHER, RESHEVSKY START MATCH TODAY

Bobby Fischer of Brooklyn, 18-year-old U.S. chess champion, and his chief rival Samuel Reshevsky of Spring Valley, N.Y., face each other today in the first game of their match at the Empire Hotel in New York.

Both players have been away from their usual chess haunts and have been seriously engaged in preparation for the event. Though the title is not at stake, each has considerable to gain in the way of worldwide recognition.

Fischer has won the U.S. championship for the last four years, with Reshevsky trailing each time. But in a major tournament in Buenos Aires last year, Reshevsky tied for first with Victor Korchnoi of Russia while Fischer wound up in the second division.

Reshevsky has never lost a set match, while facing such opponents as Al Horowitz, William Lombardy, Arthur Bisguier, Donald Byrne, Miguel Najdorf, Svetozar Gligoric, Pal Benko and your editor.

Chess Life quotes the opinions of some leading European grandmasters on the outcome of the match:

Tigran Petrosian, USSR—Reshevsky will win with a score of 9½-6½.

Paul Keres, Estonia—I think Reshevsky will win—9 to 7.

Svetozar Gligoric, Yugoslavia — Reshevsky will win.

Bent Larsen, Denmark—Reshevsky.

We understand that opinions in New York are about equally divided, with the older masters tending to favor Reshevsky. Your editor will go out on a limb with the prediction that Fischer will win two games through superior knowledge of the openings and will take the match by the margin of 9 to 7.

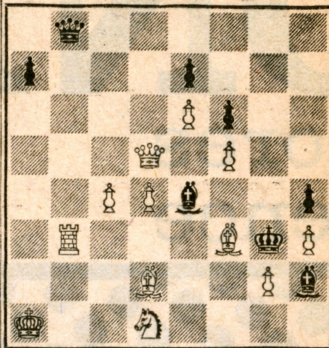
Three additional games are scheduled in New York, on Tuesday, Thursday and next Sunday. The players will then come to Los Angeles for an eight-game series, starting with a gala evening in the grand ballroom of the Beverly Hilton Hotel on July 27.

The next game, on July 30, will be the first public event at the new quarters of the Herman Steiner Chess Club at 8801 Cashio, corner Robertson. The club, which is sponsoring the Los Angeles portion of the match, will open on Tuesday, July 25.

JULY 16, 1961

TIMES PROBLEM 3293

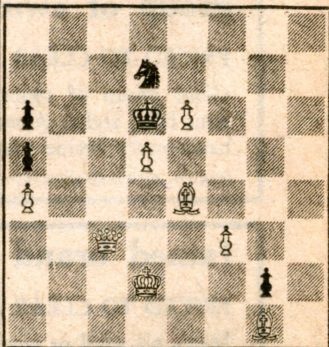
By J. Hartong

**BLACK 8**

**WHITE 12**

White mates in two.

TIMES PROBLEM 3294

By J. Hartong and F. Nowotny

**BLACK 5**

**WHITE 8**

White mates in three.

Both problems are by a fine Dutch composer, the three-mover in collaboration with an equally well-known Norwegian. The key has a real point in 3293. The knight contributes four distinct variations in 3294.

**SOLUTION TO PROBLEM 3287:** Q-K3. **SOLUTION TO PROBLEM 3288:** Q-R3. Threat, 2 Q-R6ch; if K-K3 or R-KB8, 2 N-K5(ch); if B-K3 or P-K3 or B-B8, 2 Q-R4; if P-R4, 2 QxP.

### SOLVERS' LIST

**Five points**—W. S. Aaron, F. Aks, A. J. Beer, M. Chutorian, W. Cornwall, C. Cresswell, Mrs. M. K. Dohlen, H. D. Duckwald, J. Elnisky, A. C. Engebretsen, G. E. Engebretsen, B. Hale, Dr. J. A. Healy, J. Kaufman, O. H. Ketchum, A. Y. Lew, O. D. McElroy, Mrs. J. W. Moore, F. J. Munson, I. E. Nordstrom, E. E. Penter, G. J. Sargent, E. J. Wright, W. A. Wright.

**Four points**—B. Ziman. **Three points**—E. P. Kelty, O. Wiseman. **Two points**—F. Boschan, P. M. Brown Jr., J. Gilder, L. & R. Portillo, M. Roth, G. Winkelmann. **One point**—S. Glassberg, J. Kesler, S. Schwarz.

The Los Angeles Recreation Department is co-sponsoring the event and providing the playing site. H. D. Rader is the tournament director.

Additional games at the club are scheduled for Aug. 1, 3, 6, 8, 10 and 12. A book of tickets for all eight games, priced at \$10, can be obtained from Irving Rivise, treasurer, 4050 W Slauson, L.A. 43. Members of the Steiner Club will pay \$5.

The final four games of the match will be played in New York. However, the result may well be determined here, if either player should reach the required total of 8½ points. The full 16 games will be completed in any case.

### CALIF. JUNIOR TOURNEY

Players under 21 years of age may still enter the third annual California Junior Chess Championship to start at 5 p.m. Thursday at Maryott Auditorium, 38334 N 10th St. E in Palmdale.

The first round will be completed Thursday with the time limit of 45 moves in an hour and a half and 15 moves for the next half hour. All sessions will be limited to four hours.

Three rounds will be played Friday, with the starting times 9 a.m., 1:30 p.m. and 6 p.m. The final three rounds on Saturday will start at 7:30 a.m., noon and 4:30 p.m. Prizes will be awarded at a banquet at 9 p.m. Saturday, at which your editor will be master of ceremonies.

The entrance fee is \$5, with membership in the U.S. Chess Federation required. The fee covers housing, which will be provided for all players, and the cost of the banquet.

The winner will receive a trophy and \$100 for expenses for the U.S. Junior Championship at Dayton, O. The second prize will be a trophy and \$50. Other awards will be given for the highest ranking players and for the most brilliant game.

The tournament has been authorized by the California State Chess Federation and is sponsored by the Lions Club of Palmdale.

### METROPOLITAN OPEN

The Metropolitan Open Chess Tournament, a new annual event organized by the Southern California Chess League, is being contested this weekend at Mountain View Playground, Elliott Ave. near Durfee Ave. in El Monte.

The tournament started Friday night, with three rounds keeping the players busy yesterday. The final two rounds today will start at 9 a.m. and 2:30 p.m.

Both of the following games from the Moscow International Tournament open quietly. The main interest is in the endgames, which are quite instructive and well played.

### RETI OPENING

| Smyslov<br>Russia<br>White | Gufeld<br>Russia<br>Black | Smyslov<br>Russia<br>White | Gufeld<br>Russia<br>Black |
|----------------------------|---------------------------|----------------------------|---------------------------|
| 1-N-KB3                    | N-KB3                     | 28-P-K4                    | P-B4                      |
| 2-P-KN3                    | P-KN3                     | 29-K-B2                    | PxP                       |
| 3-P-QN4                    | B-N2                      | 30-K-K3                    | K-B3                      |
| 4-B-QN2                    | O-O                       | 31-KxP                     | R-B2                      |
| 5-B-N2                     | P-Q3                      | 32-K-Q4                    | R-R2                      |
| 6-P-B4                     | P-K4                      | 33-R-B2                    | P-R4                      |
| 7-O-O                      | R-K                       | 34-B-B6                    | R-R6                      |
| 8-P-Q3                     | P-QR4                     | 35-B-Q5                    | B-B4                      |
| 9-P-QR3                    | PxP                       | 36-B-K4                    | P-R5                      |
| 10-PxP                     | RxR                       | 37-PxP                     | R-R6                      |
| 11-BxR                     | P-K5                      | 38-BxB                     | KxB                       |
| 12-PxP                     | NxP                       | 39-R-K2                    | KxP                       |
| 13-BxB                     | KxB                       | 40-R-K4ch                  | K-B4                      |
| 14-KN-Q2                   | NxN                       | 41-K-Q5                    | R-R6                      |
| 15-QxN                     | N-B3                      | 42-R-Q4                    | R-R3                      |
| 16-P-B4                    | Q-B3                      | 43-R-Q                     | K-B3                      |
| 17-P-K3                    | Q-K3                      | 44-R-K                     | K-B2                      |
| 18-P-N5                    | N-K2                      | 45-R-K2                    | R-R5                      |
| 19-Q-B3ch                  | Q-B3                      | 46-R-QN2                   | K-K2                      |
| 20-QxQch                   | KxQ                       | 47-R-N7ch                  | K-K                       |
| 21-N-B3                    | B-K3                      | 48-R-N7                    | R-R7                      |
| 22-R-B                     | K-N2                      | 49-KxP                     | R-Q7ch                    |
| 23-N-Q5                    | P-QB3                     | 50-K-B6                    | R-KN7                     |
| 24-NxN                     | RxN                       | 51-P-B5                    | RxP                       |
| 25-PxP                     | PxP                       | 52-RxP                     | RxP                       |
| 26-BxP                     | R-B2                      | 53-R-Q6                    | Resigns                   |
| 27-B-N5                    | R-B4                      |                            |                           |

### GRUNFELD DEFENSE

| Larsen<br>Denmark<br>White | Lombardy<br>U.S.A.<br>Black | Larsen<br>Denmark<br>White | Lombardy<br>U.S.A.<br>Black |
|----------------------------|-----------------------------|----------------------------|-----------------------------|
| 1-P-Q4                     | N-KB3                       | 48-KxR                     | P-N7                        |
| 2-P-QB4                    | P-KN3                       | 49-R-QN                    | P-R7                        |
| 3-N-QB3                    | P-Q4                        | 50-RxP                     | P-R8(Q)                     |
| 4-PxP                      | NxP                         | 51-R-N6                    | Q-KB8                       |
| 5-P-K4                     | NxN                         | 52-P-Q7                    | QxPch                       |
| 6-PxN                      | B-N2                        | 53-K-B7                    | Q-B7ch                      |
| 7-B-QB4                    | P-QB4                       | 54-R-B6                    | QxRch                       |
| 8-N-K2                     | N-B3                        | 55-KxQ                     | P-N7                        |
| 9-B-K3                     | PxP                         | 56-P-Q8(Q)                 | P-N8(Q)                     |
| 10-PxP                     | Q-R4ch                      | 57-Q-K8                    | Q-KN3                       |
| 11-B-Q2                    | Q-Q                         | 58-K-B5                    | P-B4                        |
| 12-P-Q5                    | N-K4                        | 59-K-Q4                    | Q-Q3ch                      |
| 13-B-N5ch                  | B-Q2                        | 60-K-B3                    | Q-B4ch                      |
| 14-BxBch                   | QxB                         | 61-K-Q2                    | Q-Q4ch                      |
| 15-O-O                     | O-O                         | 62-K-B                     | Q-R8ch                      |
| 16-B-B3                    | KR-B                        | 63-K-N2                    | QxP                         |
| 17-P-B4                    | N-N5                        | 64-Q-K7                    | Q-Q7ch                      |
| 18-BxB                     | KxB                         | 65-K-N3                    | Q-Q4ch                      |
| 19-Q-Q4ch                  | K-N                         | 66-K-N2                    | Q-Q5ch                      |
| 20-P-KR3                   | Q-N4                        | 67-K-N3                    | K-N3                        |
| 21-N-N3                    | R-B5                        | 68-Q-B8                    | Q-Q4ch                      |
| 22-Q-Q2                    | N-B3                        | 69-K-B3                    | P-B5                        |
| 23-QR-K                    | QR-QB                       | 70-Q-KR8                   | K-N4                        |
| 24-P-B5                    | R-B7                        | 71-Q-R2                    | K-N5                        |
| 25-Q-Q4                    | RxRP                        | 72-Q-Nch                   | K-B4                        |
| 26-R-B                     | RxR                         | 73-Q-R2                    | P-B6                        |
| 27-RxR                     | Q-N7                        | 74-Q-R3ch                  | K-N3                        |
| 28-QxQ                     | RxQ                         | 75-Q-N3ch                  | Q-N4                        |
| 29-R-B5                    | P-KR4                       | 76-Q-B2                    | Q-K4ch                      |
| 30-P-K5                    | P-R5                        | 77-K-N4                    | K-B4                        |
| 31-R-B8ch                  | K-R2                        | 78-K-R3                    | K-N5                        |
| 32-PxN                     | PxN                         | 79-Q-Nch                   | Q-N6                        |
| 33-R-B                     | KPxP                        | 80-Q-Q4ch                  | K-R6                        |
| 34-R-Q                     | R-K7                        | 81-Q-Q7ch                  | K-N7                        |
| 35-K-B                     | R-K2                        | 82-Q-N7                    | Q-Q3ch                      |
| 36-P-Q6                    | R-Q2                        | 83-K-R2                    | Q-K3ch                      |
| 37-K-K2                    | PxP                         | 84-K-R                     | Q-B3ch                      |
| 38-K-B3                    | P-R4                        | 85-K-N                     | Q-B4ch                      |
| 39-K-B4                    | K-N3                        | 86-K-R2                    | K-N8                        |
| 40-P-R4                    | P-R5                        | 87-Q-N6ch                  | P-B7                        |
| 41-P-R5ch                  | K-N2                        | 88-K-R                     | Q-K4ch                      |
| 42-KxBP                    | P-N4                        | 89-K-N                     | Q-K5ch                      |
| 43-K-K4                    | P-R6                        | 90-K-R                     | K-N7                        |
| 44-K-Q5                    | P-N5                        | 91-Q-N2                    | P-B3                        |
| 45-R-QR                    | R-N2                        | 92-K-R2                    | Q-R5ch                      |
| 46-K-B6                    | P-N6                        | 93-K-N                     | Q-N4                        |
| 47-P-R6ch                  | K-R2                        | Resigns                    |                             |

### SO. CALIF. OPEN CHAMPIONSHIP QUEEN'S GAMBIT DECLINED

| Kovacs<br>White | Sheridan<br>Black | Kovacs<br>White | Sheridan<br>Black |
|-----------------|-------------------|-----------------|-------------------|
| 1-P-Q4          | P-Q4              | 17-Q-K2         | Q-B2              |
| 2-P-QB4         | P-K3              | 18-O-O          | P-N4              |
| 3-N-QB3         | N-KB3             | 19-K-N          | BxN               |
| 4-B-N5          | QN-Q2             | 20-BPxB         | B-Q2              |
| 5-P-K3          | P-B3              | 21-R-QB         | Q-N2              |
| 6-PxP           | KPxP              | 22-Q-R5         | B-K               |
| 7-N-B3          | B-K2              | 23-N-K2         | BxB               |
| 8-B-Q3          | O-O               | 24-QxB          | KR-K              |
| 9-Q-B2          | P-QR3             | 25-N-B4         | Q-KB2             |
| 10-P-KN4        | NxP               | 26-RxP          | QxQ               |
| 11-BxPch        | K-R               | 27-NxQch        | K-R2              |
| 12-P-KR3        | N-R3              | 28-N-B4         | N-B2              |
| 13-R-KN         | P-KB4             | 29-N-K6         | NxB               |
| 14-B-N6         | N-B3              | 30-NxNch        | K-R               |
| 15-N-K5         | N(B)-N            | 31-N-B7ch       | K-R2              |
| 16-P-B4         | B-B3              | 32-QR-KN6       | Resigns           |