

CHESS

BY ISAAC KASHDAN
INTERNATIONAL GRANDMASTER
Address letters to Chess Editor, L.A. Times
Los Angeles 53, Calif.

GRANDMASTERS WILL GIVE EXHIBITIONS

A first in Los Angeles chess history was recorded last week-end when four American grandmasters met here, more by accident than design. Champion Bobby Fischer flew in from New York for a short business visit, Samuel Reshevsky was on an exhibition tour, and Larry Evans, who came for a look, may stay on. Your editor is the old-timer, with over 11 years' residence to date.

Fischer and Reshevsky discussed the prospects for a match, which has been in the talking stage for some time. Should a proper purse be forthcoming, they may meet this spring in New York.

A flurry of interest in exhibition chess has been stirred by the presence of all this talent. Fischer, who at 17 has already won the U.S. Chess Championship four times, will play simultaneously in the Boulevard Room of the Ambassador Hotel at 7:30 p.m. Wednesday. Players will be charged \$3.50 and spectators \$1.50.

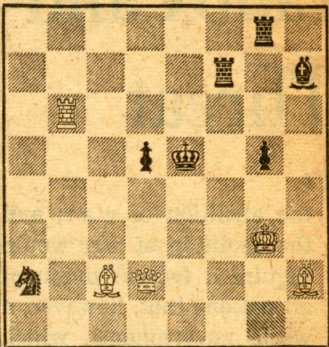
Reshevsky will take on eight strong opponents in simultaneous play with clocks under tournament conditions at 7:30 p.m. Saturday at the Herman Steiner Chess Club, 626 S La Brea Ave. Among them will be Jack Moskowitz, Irving Rivise, Stephen Sholomson and Tabor Weinberger. Non-members will be charged \$2 to witness the event. Your editor will be the director.

Former U.S. champion Larry Evans will play simultaneously at 1 p.m. next Sunday at the Van Nuys Chess Club, 13162 Burbank Blvd. The charge for players will be \$2.50 and 25 cents for spectators. Players are requested to bring their own sets and boards.

In exhibitions last week Reshevsky played against 44 at the Santa Monica Bay Chess Club, winning 33, losing to Fritz Leiber and drawing 10 games against N. Bakken, R. Bellman, E. Bersbach, Dr. Collins, Dr. Drenick, H. Goldhammer, R. Harshbarger, A. Loera, C. Lukaart and D. Sanchez.

At the University of Judaism, Reshevsky faced 40, of which he won 35, lost to E. O'Connor and drew with L. Ferguson, H. Goldhammer, G. Mann and E. Milcas.

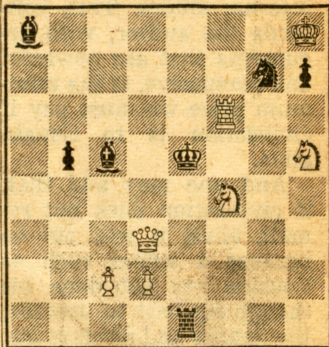
Jan. 29, 1961
TIMES PROBLEM 3245
By J. Opdenoordt
BLACK 7



WHITE 5

White mates in two.

TIMES PROBLEM 3246
By K. H. Buschmann
BLACK 7



WHITE 7

White mates in three.

Sacrifices are a fairly frequent feature in problems, and add considerably to the interest, especially when white does not have too much force. Today's problems are good examples.

SOLUTION TO PROBLEM 3239: Q-N3.
SOLUTION TO PROBLEM 3240: Q-R3.
Threat, 2 N-Q3; if PxQBP, 2 B-Q1; if P-K3, 2 N-N4; if PxKBP, 2 Q-B5ch.

SOLVERS' LIST

Five points—F. Aks, H. Clay, I. E. Nordstrom, D. Rothman. Three points—E. E. Penter. Two points—D. Connell, C. Cresswell, J. Elnisky, Dr. J. A. Healy, N. J. Murphy, R. H. Sand, L. Seeley.

One point — E. Althaus, K. L. Deck, J. Foley, O. H. Ketchum, R. Kovner, J. H. Lillystone, D. Malina, B. Miller, G. F. Oglesby, C. W. Wenborne.

Weiner. The change from Monday was made to accommodate a large number of members.

Leslie Simon played 18 boards simultaneously, including one blindfold, at the City Terrace Club, 3875 City Terrace Dr. He won 10, lost five and drew three. One of the games follows.

As the opening event of the Westchester chess fiesta, your editor played 36 simultaneously at Loyola University, winning 32, losing to Mrs. K. Heiser and drawing with Leroy Johnson, Ray Snow and Vincent Homolka.

The open tournament and the reserve section, main events of the fiesta, are in full swing this weekend in the fine quarters furnished by Loyola in the Students' Activities Building. The final two rounds are scheduled to start at 10 a.m. and 3 p.m. today. The closing dinner and prize presentation will be held at 8 p.m.

SOUTH BAY CHESS CLUB

One of the active clubs of the area is the South Bay Chess Club, which meets at 7 p.m. Wednesdays at the Hermosa Beach Community Building, 1035 Valley Dr.

Robert Jacobs won the annual Class A club tournament with a score of 7-0, followed by Gregory Van Deene with 5½-1½. Antoine de Beaubien won the Class B event with 6-1, followed by Robert Kozel, 5½-1½.

Robert Fether was elected club president for 1961 and Mendl Pinkas vice president. Allen Carter was re-elected as secretary and de Beaubien and Kozel to the offices of tournament director and treasurer.

Jacobs is setting up a series of instructional clinics for members and visitors, which may be held during the first part of the regular Wednesday sessions. There will be no charge for occasional visitors.

The club is considering the possibility of a summer tournament to include national or international masters. This might be scheduled either just before or after the U.S. Open Championship in San Francisco.

CHESS CLUB NOTES

The Los Angeles Chess Club has moved its headquarters to the Fay Building, 326 W 3rd St., Room 301. The club will be open daily from noon to 8 p.m. Visitors are welcome.

A new club has been organized in the Rossmoor Los Alamitos area in Long Beach. Meetings will be Tuesdays at 7 p.m. at the home of A. O. Henry, 12592 Oak Way Dr., Los Alamitos. The phone number is GE. 0-1266.

The chess club at the Westside Jewish Community Center, 5870 W Olympic Blvd., will meet on Thursdays at 8 p.m., according to chairman Max

Simon White	Ash Black	Simon White	Ash Black
1-P-K4	P-K4	12-Q-Q	P-R3
2-N-KB3	N-QB3	13-N-Q4	Q-R5
3-P-Q4	PxP	14-P-KN3	Q-R6
4-B-QB4	N-B3	15-P-QB3	P-N4
5-P-K5	P-Q4	16-B-B	QR-K
6-B-QN5	N-Q2	17-NxP	B-N4
7-O-O	B-K2	18-N-Q4	NxP
8-BxN	PxB	19-N-Q2	N-Q6
9-QxP	O-O	20-RxR	RxR
10-B-B4	B-R3	21-N(2)-B-3	N-K8
11-R-K	B-B4	Resigns	

COLUMBIA TOPS COLLEGES

The Columbia chess team won the national intercollegiate team championship, heading a group of 13 colleges in a six-round Swiss system tournament in Princeton, N.J.

The winners tied one match with Toronto, scoring the other five for a final point tally of 19. Toronto was second with 17½ points. Other leaders in order of finish were Harvard, Penn State and Boston.

U.S. CHESS CHAMPIONSHIP

SICILIAN DEFENSE

Weinstein White	Reshevsky Black	Weinstein White	Reshevsky Black
1-P-K4	P-QB4	17-B-R4	Q-B2
2-N-KB3	N-QB3	18-N-K3	B-K2
3-P-Q4	PxP	19-P-B4	P-N5
4-NxP	Q-B2	20-P-B5	P-QR4
5-N-QB3	P-K3	21-QR-B	O-O
6-B-K3	P-QR3	22-R-KB3	R-Q5
7-B-Q3	N-B3	23-R-N3	K-R
8-O-O	P-QN4	24-R-R3	KR-Q
9-NxN	PxN	25-N-B4	B-R3
10-P-B4	P-K4	26-B-KB2	BxN
11-P-B5	B-N2	27-RxB	RxR
12-P-QR4	R-Q	28-BxR	Q-R2
13-Q-K2	B-Q3	29-P-N4	BxP
14-K-R	Q-K2	30-P-N5	N-RP
15-B-N5	B-B4	31-PxP	PxP
16-N-Q	P-R3	32-RxP	

Black lost by overstepping the time limit at this point, but his game was gone in any case. If 32... BxB; 33, Q-R5, P-B3; 34, B-B7 wins.

ENGLISH OPENING

Lombardy White	Kalme Black	Lombardy White	Kalme Black
1-P-QB4	N-KB3	27-P-N4	Q-N4
2-P-KN3	P-Q4	28-BxB	PxN
3-B-N2	P-K4	29-PxP	K-R2
4-PxP	NxP	30-R-QB2	BxP
5-N-QB3	N-K2	31-P-B4	BxQ
6-P-QN4	P-KN3	32-PxQ	RxB
7-P-QR4	B-N2	33-RxB	BxP
8-B-QR3	O-O	34-R-KR2	N-N
9-R-B	P-QR3	35-B-N2ch	K-N2
10-N-B3	QN-B3	36-BxP	R-K
11-P-Q3	R-K	37-R-R7ch	KxR
12-O-O	N-B4	38-RxB	R-N6ch
13-N-K4	QN-Q5	39-K-B2	RxP
14-KN-Q2	P-KR4	40-B-Q5	RxKNP
15-P-K3	N-K3	41-BxNch	K-N2
16-N-B4	P-R5	42-R-R8	R-N5
17-B-N2	PxP	43-B-Q5	RxP
18-RPxP	N-N4	44-RxP	P-B4
19-NxN	QxN	45-K-K3	N-N4
20-N-Q2	Q-K2	46-B-B6	K-B3
21-Q-N3	B-K3	47-B-N5ch	K-K4
22-Q-B3	Q-N4	48-R-QB6	R-N6ch
23-N-B3	Q-R4	49-K-Q2	K-Q4
24-NxP	N-R3	50-R-KN6	R-KN6
25-P-Q4	B-R6	51-P-R5	Resigns
26-P-B3	P-KB3		

RUY LOPEZ

Weinstein White	Lombardy Black	Weinstein White	Lombardy Black
1-P-K4	P-K4	18-PxKP	PxKP
2-N-KB3	N-QB3	19-R-K3	R-N
3-B-N5	P-QR3	20-R-Q3	Q-B
4-B-R4	N-B3	21-PxP	PxP
5-O-O	B-K2	22-B-K3	R-Q
6-R-K	P-QN4	23-B-B5	B-K
7-B-N3	P-Q3	24-P-R3	R-R
8-P-B3	B-N5	25-RxR	QxR
9-P-Q3	P-R3	26-N-R2	Q-R5
10-QN-Q2	N-QR4	27-Q-R5	Q-B7
11-B-B2	N-R2	28-N-N4	B-N4
12-P-N4	N-QB3	29-R-B3	RxB
13-P-QR4	N-N4	30-PxR	Q-Q8ch
14-B-N3	NxNch	31-K-R2	QxP
15-NxN	O-O	32-P-R4	P-K5
16-B-Q5	B-Q2	33-R-N3	Resigns
17-P-Q4	B-B3		