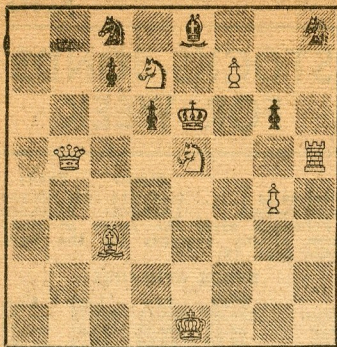


BLACK 7



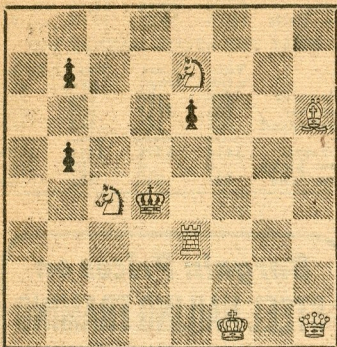
WHITE 8

White mates in two.

TIMES PROBLEM 2480

By Dr. E. Hallgren

BLACK 4



WHITE 6

White mates in three.

SOLUTION TO PROBLEM 2475: Q-N7

SOLUTION TO PROBLEM 2476: N-B5

We received solutions from: K. M. Simes, J. Kaufman, C. Huffman, C. G. Taber, D. M. Fehling, R. B. Killgrove, M. J. Bakjian, C. B. Collins, B. V. Owl, R. W. Paterson, K. Chambers, C. P. Ford, T. Rothman, Toscha Seidel, J. G. Scipps, R. J. Cunningham, W. L. Rankel, K. Hartman, L. A. Victor, W. B. Tudor, Dr. J. A. Healy, W. C. Everett, N. Lesser, R. W. Gillies, B. McGuire, N. G. Woodward, W. L. Koethen, L. B. Rotter, P. V. Nielsen, J. J. Adams, J. P. Walsh, A. Braedley, W. A. Kiefer, L. Harvey, E. Ellis, S. E. Williams, D. G. Stewart, E. E. Hetherington, D. C. Harwich, M. Morris, S. W. Nay, L. A. Victor, J. C. Dickson.

WORLD'S CHAMPIONSHIP CANDIDATES TOURNAMENT

After 11 rounds of play in the World's Championship Candidates Tournament held at Zurich, Switzerland, Samuel Reshevsky leads with 7½-3½. In second place close behind him is V. Smyslov, 7-3; third, Miguel Najdorf of Argentina, 6-4. Neither Reshevsky nor Smyslov lost any games.

Standings of players after 11 rounds:

	W	L		W	L
Reshevsky	7½	3½	Gligoric	5	5
Smyslov	7	3	Averbach	5	5
Najdorf	6	4	Tajmanov	4½	5½
Bronstein	5½	3½	Geller	4	6
Keres	5½	4½	Kotov	4	6
Boleslavsky	5½	4½	Szabo	4	6
Petrosian	5½	4½	Stahlberg	2½	8½
Euwe	5½	5½			

RAPID TRANSIT WINNERS

The weekly Wednesday evening Rapid Transit Tournament held at the Hollywood Chess Group, 108 N Pormosa, Ave., again had one of the strongest entries with 20 players. R. W. Banner of Orange was a close winner with a score of 16½-2½; second place was shared by Irving Rivise and Harry Borochoff, 16-3; fourth place went to J. R. Lazos, 15½-3½; fifth place to James Cross, 15-5. The highlight of the tournament was the participation of three lady players, Mrs. Nancy Roos, Mrs. Lena Grumette and Mrs. Mac Michaels.

The tournament is open to anyone interested in playing in it and visitors are welcome at all times. Call WEBSTER 1-8817 for information.

NIMZO-INDIAN DEFENSE

Reshevsky	Petrosian	Reshevsky	Petrosian
White	Black	White	Black
1-P-Q4	N-KB3	22-B-N4	Q-K
2-P-QB4	P-K3	23-P-K5	P-QR4
3-N-QB3	B-N5	24-R-K3	R-Q
4-P-K3	O-O	25-R(1)-K	R-K3
5-B-Q3	P-Q4	26-P-QR4	N-K2!
6-N-B3	P-B4	27-BxR	PxB
7-O-O	N-B3	28-Q-B	N-Q4
8-P-QR3	BxN	29-R-B3	B-Q6!
9-PxB	P-QN3	30-RxB!	PxR
10-PxQP	KPxP	31-QxP	P-N5
11-B-N2	P-B5	32-PxP	PxP
12-B-B2	B-N5	33-P-R5	R-R
13-Q-K	N-K5	34-R-R	Q-B3
14-N-Q2	NxN	35-B-B	Q-B2
15-QxN	B-R4	36-P-R6	Q-N3
16-P-B3	B-N3	37-B-Q2	P-N6
17-P-K4	Q-Q2	38-Q-B4	P-R3
18-QR-K	PxP	39-P-R3	P-N7
19-PxP	KR-K	40-R-QN	K-R
20-Q-B4	P-N4	41-B-K	Draw
21-B-Q	R-K2		agreed

NIMZO-INDIAN DEFENSE

Gligoric	Taimanov	Gligoric	Taimanov
White	Black	White	Black
1-P-Q4	N-KB3	18-P-R4	P-QR4
2-P-QB4	P-K3	19-P-B5	NPxP
3-N-QB3	B-N5	20-PxP	O-O
4-N-B3	P-QN3	21-KR-Q	Q-B3
5-B-N5	P-KR3	22-PxP	PxP
6-B-R4	P-KN4	23-P-N4	QR-B
7-B-N3	N-K5	24-PxP	RxB
8-Q-B2	B-N2	25-P-K4	R-KB2
9-P-K3	P-Q3	26-R-Q3	P-N5
10-B-Q3	BxNch	27-PxP	QxKP
11-PxB	P-KB4	28-Q-Q2	QxNP
12-O-O	N-Q2	29-R-K	R-KN2
13-N-Q2	N(2)-B3	30-RxQP	RxP
14-NxN	BxN	31-R(6)xF	R-KN6
15-BxB	NxB	32-R(1)-K2	RxPch
16-P-B3	NxB		Draw agreed
17-PxN	Q-Q2		

QUEEN'S GAMBIT ACCEPTED

Boleslavsky	Kotov	Boleslavsky	Kotov
White	Black	White	Black
1-P-Q4	P-Q4	22-QxR	QxQ
2-P-QB4	PxP	23-BxQ	R-K
3-N-KB3	N-KB3	24-RxRch	NxR
4-P-K3	P-K3	25-B-K5!	B-B3
5-BxP	P-B4	26-P-QN4	P-KR4
6-O-O	P-QR3	27-P-B3	K-R2
7-Q-K2	PxP	28-N-K2	P-N4
8-PxP	B-K2	29-K-B2	P-R5
9-N-B3	P-QN4	30-P-KN3	PxPch
10-B-N3	B-N2	31-PxP	K-N3
11-B-N5	O-O	32-P-N4	B-N2
12-KR-K	N-B3	33-K-K3	B-B3
13-QR-Q	N-QR4	34-N-B3	B-N2
14-P-Q5	NxB	35-N-K4	B-Q4
15-PxP	Q-N3	36-N-B5	K-B2
16-PxN	PxP	37-NxP	K-K3
17-N-Q4	B-Q3	38-B-B3	B-R
18-QxPch	K-R	39-N-B5ch	B-R
19-N-B3	QR-Q	40-N-K4	K-N3
20-B-B4	BxN	41-B-K5	B-Q4
21-RxB	RxR	42-N-Q2	Resigns

QUEEN'S GAMBIT ACCEPTED

Szabo	Keres	Szabo	Keres
White	Black	White	Black
1-P-Q4	P-Q4	22-RxQ	QR-B
2-N-KB3	N-KB3	23-KR-Q	P-N3
3-P-QB4	PxP	24-N-R6ch	K-N2
4-N-B3	P-QR3	25-P-N5	P-QB4
5-Q-R4ch?	P-N4!	26-B-N4	R-B2
6-Q-B2	N-B3	27-R-Q5	N-B
7-P-K4	P-K3	28-R-KB6	BxP
8-B-N5	NxQP	29-R-Q	P-B5
9-NxN	QxN	30-PxP	PxP
10-R-Q	Q-B4	31-P-B3	B-Q6
11-B-K3	Q-B3	32-RxRP	N-K2
12-B-K2	B-N2	33-R-Q6	N-N
13-B-B3	P-K4	34-R-QB	R-N2
14-O-O	B-B4	35-B-Q7	R-Q
15-N-Q5	BxB	36-NxN	KxN
16-NxB	O-O	37-B-B5	RxR
17-P-KN4	R-K	38-BxR	R-N3
18-N-B5	N-Q2	39-B-Q5	K-B
19-P-N3	N-N3	40-R-R	P-B6
20-Q-B	PxP	41-R-R8ch	K-K2
21-PxP	QxQ	42-Resigns.	

GRUNFELD DEFENSE

Euwe	Smyslov	Euwe	Smyslov
White	Black	White	Black
1-P-Q4	N-KB3	31-Q-K2	RxN
2-P-QB4	P-KN3	32-BxR	QxB
3-P-KN3	B-N2	33-QxPch	K-N
4-B-N2	P-Q4	34-Q-K4	P-QR4
5-PxP	NxP	35-P-R4	Q-Q4
6-P-K4	N-N3	36-Q-N4	R-KB
7-N-K2	P-B4	37-R-Q	Q-KB6
8-P-Q5	P-K3	38-Q-B4ch	Q-B2
9-O-O	O-O	39-Q-B5	Q-B4
10-P-QR4	N-R3	40-Q-B4ch	Q-B2
11-N-R3	PxP	41-Q-B5	Q-B4
12-PxP	B-B4	42-Q-B4ch	K-N2
13-N-B3	N-N5	43-Q-Q4ch	Q-B3
14-B-K3	R-B	44-Q-B5	R-B2
15-P-Q6	B-Q6	45-R-Q2	Q-K2
16-BxNP	R-N	46-Q-B3ch	R-B3
17-B-N2	BxR	47-R-Q4	N-B3
18-KxB	N-Q2	48-R-Q5	Q-K3
19-N-B4	N-K4	49-R-QB5	P-R4
20-NxN	BxN	50-P-N3	K-B2
21-BxP	Q-R4	51-R-QN5	Q-Q2
22-B-K3	KR-Q	52-K-N2	Q-K2
23-N-K4	BxQP!!	53-Q-B4ch	K-N2
24-N-B6ch	K-R	54-Q-Q3	K-R3
25-B-Q4	B-K4	55-R-Q5	R-B2
26-N-Q7	P-B3	56-R-Q6	N-K4
27-BxB	PxB	57-Q-K3ch	K-R2
28-Q-Q2	QR-B	58-R-N6	Q-B2
29-K-N	Q-B4!	59-Resigns.	
30-B-R3	Q-K2		

SAN GABRIEL OPEN

CHAMPIONSHIP TOURNAMENT

The annual San Gabriel Open Tournament, sponsored by the Pasadena Chess Club, again cordially invites all chess players interested in playing in this tournament. The tournament will begin Friday evening, Oct. 2, with one round a week. The games are played in the Pasadena Chess Club, located in the Tourist Clubhouse at Raymond and Del Mar, Pasadena. Entrance fee \$5 with \$2 refunded on completion of games. E. B. Adams, SYcamore 4-0329, is tournament director.

HOLLYWOOD CHESS GROUP CHAMPIONSHIP

The annual Hollywood Chess Group Championship, the strongest in Southern California, will start Oct. 10. The first prize will be \$100, with other prizes to follow. Entrance fee is \$10, and the tournament is limited to 20 players. For further information call Webster 18817.

IMRE KONIG SIMULTANEOUS EXHIBITION AND LECTURE

Imre Konig, international chess master, will be guest of the Hollywood Chess Group on Tuesday, Sept. 22, when he will play against 25 players simultaneously and give his usual interesting lecture on openings. Due to a limited number of boards available, reservations should be made in advance. For further information call Webster 18817. Play begins at 7:30 p.m. at the group headquarters, 108 N Formosa Ave.

QP(Exchange Variation)

Kotov White	Stahlberg Black	Kotov White	Stahlberg Black
1-P-Q4	N-KB3	22-PxP	RxP
2-P-QB4	P-K3	23-P-QB4	R-Q2
3-N-KB3	P-Q4	24-K-B3	N-N2
4-N-B3	B-K2	25-R-Q2	K-B2
5-PxP	PxP	26-B-N8	P-N3
6-B-B4	P-B3	27-R-QR2	R-QR4
7-Q-B2	P-KN3	28-B-K5	N-B4
8-P-K3	B-KB4	29-R-KN	P-R4!
9-B-Q3	BxB	30-B-B4	N-R5
10-QxB	QN-Q2	31-R-N5	RxR
11-P-KR3	N-B	32-BxR	N-B6
12-P-KN4	N-K3	33-P-R4	NxB
13-B-N3	Q-R4	34-PxN	K-K3
14-N-Q2	O-O	35-P-R5	P-R5!
15-O-O-O	B-N5	36-R-R	PxP
16-K-N	BxN	37-K-Q2	P-R6
17-QxB	QxQ	38-K-K2	P-R7
18-PxQ	N-K5	39-P-B3	R-R2
19-NxN	PxN	40-R-R	PxPch
20-K-B2	QR-Q	41-KxP	P-R5
21-P-QR4	P-KB4	42-Resigns.	

GRUNFELD DEFENSE

Smyslov White	Szabo Black	Smyslov White	Szabo Black
1-P-QB4	N-KB3	25-K-B2	B-R3
2-P-KN3	P-B3	26-K-K3	P-R3
3-N-KB3	P-Q4	27-B-B3	P-B4
4-P-N3	P-KN3	28-PxPe.p.ch.	KxP
5-B-QN2	B-N2	29-Q4	P-QN4
6-B-N2	Q-N3	30-PxPch	PxP
7-Q-B	O-O	31-P-K4	PxP
8-O-O	QN-Q2	32-KxP	B-N4
9-PxP	PxP	33-P-KR4!	PxP
10-B-Q4	Q-Q3	34-PxP	P-R4
11-Q-R3!	N-K5	35-K-Q4	P-R5
12-BxB	KxB	36-P-N4	P-R6
13-QxQ	NxQ	37-B-K4	B-K
14-R-B	P-K3	38-B-N	B-B2
15-N-B3	P-N3	39-K-B3	P-K4
16-P-Q4	B-R3	40-P-N5	B-Q4
17-N-K5	NxN	41-K-N4	P-K5
18-PxN	N-N4	42-KxP	P-K6
19-NxN	BxN	43-B-Q3	B-B6
20-R-B2	KR-QB	44-K-N4	P-K7
21-QR-QB	RxR	45-BxP	BxB
22-RxR	B-R3	46-P-R4	Draw agreed
23-P-B4	R-B		
24-RxR	BxR		

KING'S INDIAN DEFENSE

Stahlberg White	Geller Black	Stahlberg White	Geller Black
1-P-Q4	N-KB3	29-NxR	Q-B2
2-N-KB3	P-KN3	30-N(Q1)-K3	
3-P-KN3	B-N2		P-QN4
4-B-N2	O-O	31-P-QR3	P-QR4
5-O-O	P-Q3	32-N-Q2	N-Q4
6-QN-Q2	N-B3	33-NxN	BxN
7-P-B3	P-K4	34-P-K3	P-QB5
8-PxP	PxP	35-B-B	P-R5
9-N-N3	Q-K2	36-B-N2	Q-Q2
10-B-K3	R-Q	37-P-KN4	B-K3
11-Q-B	P-K5	38-PxP	PxP
12-KN-Q4	N-K4	39-N-B	Q-Q6
13-B-N5	N-B5	40-Q-B	P-R4
14-N-B2	P-B3	41-N-N3	P-R5
15-N-K3	N-Q3	42-N-R5	B-B2
16-R-Q	P-KR3	43-NxB	KxN
17-B-B4	KN-K	44-B-B	Q-Q
18-N-B	K-R2	45-B-K2	Q-N4ch
19-Q-B2	P-KB4	46-K-B	P-R6
20-B-K3	B-K3	47-Q-Q	Q-N7ch
21-B-Q4	N-B3	48-K-K	QxRP
22-B-B5	P-N3	49-Q-Q4ch	K-R2
23-BxN	RxB	50-B-B	Q-N8
24-RxR	QxR	51-Q-Q7	K-N
25-R-Q	Q-B2	52-Q-Q8ch	K-N2
26-N-K3	P-B4	53-Q-Q4ch	K-N3
27-N-Q2	R-Q	54-Q-Q6ch	
28-N(2)-B	RxR		Draw agreed

NIMZO-INDIAN DEFENSE

Keres White	Averbach Black	Keres White	Averbach Black
1-P-Q4	N-KB3	22-R-KB2	QxQP
2-P-QB4	P-K3	23-QxQ	RxQ
3-N-QB3	B-N5	24-R(1)-B	R-Q3
4-P-K3	O-O	25-P-KR4	PxP
5-B-Q3	P-Q4	26-R-B4	R-B4
6-N-B3	P-B4	27-N-N4	NxN
7-O-O	N-B3	28-RxNch	K-B
8-P-QR3	BxN	29-BxP	B-R3
9-PxB	P-QN3	30-R(1)-B4	R-R3
10-N-K5	B-N2	31-B-Q3	P-R6!
11-P-B4	N-QR4	32-PxP	RxRP
12-PxQP	QxP	33-R-Q4	B-B
13-Q-K2	PxP	34-R-Q8ch	K-K2
14-KPxP	N-N6	35-R(4)-Q4	B-K3
15-R-N	NxB	36-K-N2	R-N4ch
16-QRxB	QR-B	37-K-B2	R(4)QR4
17-Q-N2	Q-Q3	38-R-QN8	RxP
18-P-B5	PxP	39-B-K2	R-R7ch
19-BxP	R-B2	40-K-K	R-QR8ch
20-P-B4	R-Q	41-R-Q	R-Bch
21-R-B4	P-KN4	42-Resigns.	

Bronstein White	Naidorf Black	Bronstein White	Naidorf Black
1-P-Q4	N-KB3	22-NxN	BxN
2-P-QB4	P-KN3	23-P-B5	B-KR3
3-N-QB3	B-N2	24-PxP	PxP
4-P-K4	P-Q3	25-P-K5	BxB
5-B-N5	P-B4	26-PxB	QPxP
6-P-Q5	N-R3	27-Q-Q3	K-R2
7-B-Q3	N-B2	28-N-B3	Q-N6
8-KN-K2	P-KR3	29-R-N	P-K5
9-P-QR4	R-QN	30-RxQ	PxQ
10-O-O	O-O	31-R-N7	K-N
11-Q-B2	B-Q2	32-K-B2	R-B5
12-P-R3	P-QN4	33-K-B3	R-N
13-P-B4	N(3)-K	34-RxRch	BxR
14-RPxP	PxP	35-N-R4	B-Q3
15-R-R7	PxP	36-B-B2	K-B2
16-BxP	R-R	37-K-K3	N-B2
17-RxR	NxR	38-KxP	N-R3
18-Q-N3	P-B3	39-K-K4	P-B4ch
19-B-R4	Q-N3	40-K-B3	P-K3
20-Q-R3	N(K)-B2	41-N-N6	
21-P-QN3	N-N4		Draw agreed

GRUNFELD DEFENSE

Najdorf White	Gligoric Black	Najdorf White	Gligoric Black
1-P-Q4	N-KB3	12-R-K	R-B
2-P-QB4	P-KN3	13-B-N2	R-K
3-P-KN3	P-QB3	14-R-B	B-N2
4-N-QB3	P-Q4	15-N-Q3	B-R3
5-PxP	PxP	16-B-QR3	B-B
6-N-R3	B-N2	17-BxB	RxB
7-N-B4	O-O	18-N-B4	N-K2
8-B-N2	P-K3	19-P-KR4	P-R4
9-O-O	N-B3	20-Q-Q2	Q-Q3
10-P-K3	P-N3		Draw agreed
11-P-N3	B-R3		

CATALAN OPENING

Petrosian White	Bronstein Black	Petrosian White	Bronstein Black
1-P-Q4	N-KB3	10-Q-B2	N-B3
2-P-QB4	P-K3	11-B-B3	B-K5
3-P-KN3	P-Q4	12-Q-Q	O-O
4-B-N2	PxP	13-QN-Q2	R-N3
5-N-KB3	B-N5ch	14-N-B4	B-K5
6-B-Q2	B-K2	15-QN-Q2	R-N3
7-Q-B2	B-Q2	16-N-B4	B-K5
8-O-O	B-Q3	17-QN-Q2	Draws
9-QxBP	B-B4		

NIMZO-INDIAN DEFENSE

Averbach White	Reshevsky Black	Averbach White	Reshevsky Black
1-P-Q4	N-KB3	18-P-QB4!	P-QN3
2-P-QB4	P-K3	19-Q-Q3	QR-K
3-N-QB3	B-N5	20-P-K4	Q-Q3
4-P-K3	P-B4	21-Q-KN3	R-K2
5-B-Q3	O-O	22-B-Q2	N-N2
6-N-B3	P-Q4	23-P-B4	R(1)-K
7-O-O	N-B3	24-B-B3	P-B3
8-P-QR3	BxN	25-P-B5	R-N
9-PxB	PxP	26-B-Q2	K-R
10-BxP	Q-B2	27-B-N	N-R4
11-R-K	R-Q	28-Q-Q3	B-B5
12-Q-B2	P-K4	29-B-B2	BxB
13-N-N5!	R-B	30-QxB	N-N2
14-P-Q5	N-QR4	31-P-QR4	Q-Q
15-B-R2	P-KR3	32-R-R3	N-Q3
16-N-K4	NxN	33-R-R3	N-B2
17-QxN	B-Q2		Draw agreed

QUEEN'S INDIAN DEFENSE

Geller White	Boleslavsky Black	Geller White	Boleslavsky Black
1-P-Q4	P-K3	24-P-QN4?	Q-R5!
2-N-KB3	N-KB3	25-R-Q4	P-KN4
3-P-B4	P-QN3	26-K-N	PxP
4-N-B3	B-N2	27-Q-B2	Q-K2
5-B-N5	P-KR3	28-P-QR3	Q-N2
6-BxN	QxB	29-RxP	QxKP
7-P-K4	B-N5	30-R-Q4	R-B2
8-Q-Q3	P-B4	31-B-Q3	P-B5
9-O-O	PxP	32-B-B	Q-B3
10-N-QN5	Q-Q	33-R-Q2	P-N4
11-N(5)xQP	O-O	34-P-B5	Q-R8
12-Q-K2	N-B3	35-Q-R4	Q-B3
13-QR-Q	NxN	36-QxQ	RxQ
14-NxN	B-B4	37-K-B2	P-K4
15-B-B2	R-B	38-P-N3??	PxPch
16-P-K5	Q-N4	39-K-K	R-B6
17-P-B4	Q-K2	40-PxP	RxNP
18-K-R	P-B4	41-R-Q6	K-N2
19-N-N5	P-R3	42-B-Q3	P-K5
20-N-Q6	BxN	43-B-K2	RxP
21-RxB	R-QB3	44-B-N4	R-Q3
22-R(1)-Q	RxR	45-Resigns.	
23-RxR	B-B3		

FRENCH DEFENSE

Smyslov White	Stahlberg Black	Smyslov White	Stahlberg Black
1-P-K4	P-K3	18-NxBch	PxP
2-P-Q4	P-Q4	19-Q-B3	K-N2
3-N-QB3	N-KB3	20-N-K5!	Q-K2
4-B-N5	PxP	21-N-N4	R-KN
5-NxP	B-K2	22-N-R6!!	Q-B2
6-BxN	BxB	23-NxR	RxN
7-N-B3	N-Q2	24-P-QN3	K-R
8-B-B4	O-O	25-Q-R6	R-N3
9-Q-K2	N-N3	26-Q-R4	N-Q2
10-B-N3	B-Q2	27-R-K3	Q-R4
11-O-O	Q-K2	28-R-R3	N-B
12-KR-K	QR-Q	29-R-N3	QxP
13-QR-Q	B-QR5	30-RxR	NxR
14-BxB	NxB	31-QxBPch	K-N
15-Q-N5	N-N3	32-Q-B3	Q-B7
16-P-B4!	P-B3	33-Q-Q3	Resigns.
17-Q-N3	Q-B2		

NIMZO-INDIAN DEFENSE

Bronstein White	Averbach Black	Bronstein White	Averbach Black
1-P-Q4	N-KB3	15-B-B3	R-K
2-P-QB4	P-K3	16-N-R4	R-QB
3-N-QB3	B-N5	17-Q-N3	B-R
4-P-K3	O-O	18-KR-Q	N-K5
5-N-B3	P-QN3	19-B-K	R-N
6-B-K2	B-N2	20-Q-Q3	Q-R5
7-O-O	P-Q4	21-P-KN3	NxNP!
8-PxP	PxP	22-RPxN	QxN
9-B-Q2	B-Q3	23-B-B3	B-K4
10-R-B	P-QR3	24-BxB	RxB
11-N-K5	P-B4	25-RxP	QxP
12-N-N4	QN-Q2	26-P-QN4	R(5)ch
13-R-NxN	NxN	27-Draw agreed.	
14-PxP	PxP		

SLAV DEFENSE

Boleslavsky White	Smyslov Black	Boleslavsky White	Smyslov Black
1-P-Q4	P-Q4	10-P-K4	B-N3
2-P-QB4	P-QB3	11-P-K5	N-Q4
3-N-KB3	N-KB3	12-NxN	BxN
4-N-B3	PxP	13-B-Q3	P-QR3
5-P-QR4	B-B4	14-BxB	BxB
6-P-K3	P-K3	15-B-K3	Q-K2
7-BxP	B-QN5	16-KR-B	KR-B
8-O-O	QN-Q2	17-B-Q2	P-R3
9-Q-K2	O-O	18-Draw agreed	