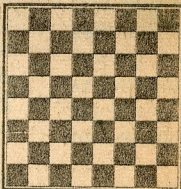


chess

by richard shorman



White brilliantly demonstrates how to convert a temporary advantage (development, space) into a permanent one (weak square) and follows through with a winning combination.

White: Adolf Anderssen.
Vienna, 1873.

Black: Louis Paulsen.

Philidor's Defense

(Notes by Yakov Neystadt in *Shakhmaty v SSSR*, No. 7, 1968)

1 P-K4	P-K4	21 P-R3	P-QR3
2 N-KB3	P-Q3	22 P-KN4	R-K1
3 P-Q4	PxP	23 P-B4	R-K3
4 QxP	N-QB3	24 P-N5	P-N4
5 B/QN5	B-Q2	25 P-KR4	R-K1
6 BxN	BxB	26 Q-Q3	R-N1
7 B-N5	N-B3	27 P-R5	P-R4
8 N-B3	B-K2	28 P-N4(g)	PxP
9 0-0-0(a)	0-0	29 PxP	QxP(h)
10 KR-K1	R-K1	30 QxBP	Q-B2
11 K-N1	B-Q2(b)	31 Q-Q3	B-Q2
12 BxN	BxB	32 N-K4	Q-B4(i)
13 P-K5!	B-K2	33 R-R1	R-K1(j)
14 N-Q5!(c)	B-K1	34 N/4-B6ch!	PxN
15 PxP	PxP(d)	35 NxPch	K-B2
16 RxR	BxR(e)	36 RxPch	B-N2(k)
17 N-Q2	B-B3	37 RxBch!	KxR
18 N-K4	P-B4	38 NxRch	K-B1
19 N-4-B3 (f)	Q-Q2	39 QxQch	BxQ
20 P-QR3	Q-KB2	40 NxP, and White won	

(a) Anderssen's opening plan is well grounded positionally. World Champion Alekhine once played precisely the same line in 1936.

(b) This harmless looking move lets Anderssen compound his advantage by saddling his opponent with a permanently weak center Pawn.

(c) Now Black must accept an isolated **QP**, since 14 . . . PxP loses the **OB** after 15 NxPch RxN 16 RxP! (but not 16 NxP? Q-K1!).

(d) Black cannot play 15 . . . BxP because of 16 NxP.

(e) The remainder of the game gives an excellent lesson on how to exploit the weakness of an isolated Pawn on an open file.

(f) White's Knights occupy ideal posts, one sitting directly in front of the isolani and the other standing by in case of an exchange.

(g) Killing Black's Q-side chances.

(h) Stiffer resistance is possible with 29 . . . B-Q2.

(i) White threatened 33 R-R1 and N-B6ch. Bad is 32 . . . B-B4 because of 33 N-4-Bch.

(j) Black seems to have prevented the check on his KB3.

(k) If 36 . . . K-N3, then 37 Q-KB3 wraps it up.

★ ★ ★

BLIND CHESS

In a small round robin tournament held at the Federal Building in San Francisco, September 14, for the Northern California Braille Chess Championship, first place (\$25 plus trophy) went to Grant Metcalf with a perfect score of 4-0. Edwin Lanini won second prize (\$15 plus trophy) for his tally of 3-1. Third place (trophy) was taken by Clarence Sewell with 1½-2½.

★ ★ ★

WHERE TO PLAY CHESS

The Hayward Chess Club, 2058 D St. (Hayward Arts and Science Center). Monday and Friday, 8-11 p.m.

Cherryland Cafe, 22472 Meekland Ave. (corner of A St. and Meekland Ave.), Hayward. Evenings, 10 p.m. to 6 a.m.

The Fremont Chess Club, School St., Niles (Niles Community Center, close to Niles High School). Monday, 7-11 p.m.

The Newark Chess Club, Cedar Blvd. (Newark Community Center). Friday, 7-10 p.m.