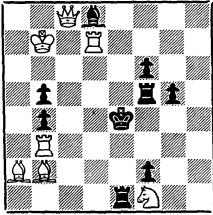

THE CALIFORNIA CHESS REPORTER

XII 1, 1962

ADDISON INVADES SOUTH



FROM: 244 Kearny St. San Francisco 8

TO:

David Lannou
111 Heritage Street
Brooklyn 2, New York

THE CALIFORNIA CHESS REPORTER

Vol. XII, No. 1 \$2 per year July, 1962

THE CALIFORNIA CHESS REPORTER, 244 Kearny Street, San Francisco 8

Monthly except January, March, August, and October

Official Organ of the California State Chess Federation

Editor: Guthrie McClain

Associate Editors: Gordon S. Barrett, Los Angeles; Dr. Mark W. Eudey, Berkeley;

Neil T. Austin, Sacramento; Irving Rivise, Los Angeles

Games Editor: Robert E. Burger

Guest Annotator: Intl. Master Imre Konig

Second-class postage paid at San Francisco, California

CONTENTS

Southern Calif. Open . . . 1-4	City Terrace 10
Southern Calif. Experts 4-5	Los Angeles High Schools. 10
Hamilton AFB Open 6	Los Angeles Playground . . 10
Riverside Club 7	Games 11-15
Game of the Month 8-9	Tasks 16
Calendar 9	

ADDISON INVADES SOUTH

William G. Addison of San Francisco took first prize in the Southern California Open, held at Santa Monica June 22-24. Addison's score of $5\frac{1}{2}-\frac{1}{2}$ edged out D. Conwit, W. Cunningham, N. Lessing and P. Quillen, all with 5-1 scores. There were 85 players in the six-round Swiss System tournament.

This seems to be the first instance on record of a Northerner walking away with first prize in a Los Angeles tournament, State championships excepted. It must be admitted, however, that Addison was originally a Southerner, having played junior chess in Baton Rouge, Louisiana.

A powerful lineup of high-rated chessplayers were also-rans at Santa Monica: Tibor Weinberger and Irving Rivise, State co-champions, ex-college titleholders Walt Cunningham, Stephen Matzner and Imre Barlai, and Bob Cross, Stephen Sholomson, Ronnie Gross, etc.

ADDISON WINS SOUTHERN CALIFORNIA OPEN

The Santa Monica hosts of the Southern California Open advertised the event too well at the North-South team match, for several northerners went south on the week end of June 22-24 and one of them, Bill Addison of San Francisco, took home the \$250 first prize. Addison headed a large field of 85 players with a $5\frac{1}{2}-\frac{1}{2}$ score.

There was a four-way tie for second between W. Cunningham, P. Quillen, N. Lessing and D. Conwit -- each of whom won \$76. Cunningham had the highest tie-breaking points with 23, but the prize money was divided. Class prizes went to E. Gaylor, E. Kennedy and F. Metz (\$38 each) and D. Benge, R. Laver, H. Milner, R. Myhro and F. Smyth (\$2 each). The tournament director was H. T. Abel.

SOUTHERN CALIFORNIA OPEN, SANTA MONICA, JUNE 22-24, 1962

	1	2	3	4	5	6	Score
1. Addison W	W69	W2	D18	W41	W5	W10	$5\frac{1}{2}-\frac{1}{2}$
2. Conwit D	W70	L1	W51	W67	W46	W13	5-1
3. Cunningham W	W48	W43	W40	W8	D10	D4	5-1
4. Lessing N	W58	D39	W61	W18	W11	D3	5-1
5. Quillen P	W85	W50*	W12	W13	L1	W16	5-1
6. Gordon M	L19	W71	W53	W61	W21	D23	$4\frac{1}{2}-1\frac{1}{2}$
7. Jacobs R	W65	W20	D11	L32	W25	W36	$4\frac{1}{2}-1\frac{1}{2}$
8. Lazos J	W73	W28	W17	L3	W38	D12	$4\frac{1}{2}-1\frac{1}{2}$
9. Matzner S	W82	L17	W45	D56	W59	W32	$4\frac{1}{2}-1\frac{1}{2}$
10. Sholomson S	W62	W27	W33	W36	D3	L1	$4\frac{1}{2}-1\frac{1}{2}$
11. Walker C	W63	W14	D7	W23	L4	W29	$4\frac{1}{2}-1\frac{1}{2}$
12. Weinberger T	W83	W26	L5	W15	W32	D8	$4\frac{1}{2}-1\frac{1}{2}$
13. Barlai I	W77	W38	W21	L5	W41	L2	4-2
14. Barry J	W80	L11	W31	L20	W44	W41	4-2
15. Coles A	L17	W68	W70	L12	W66	W49	4-2
16. Cross R	W64	L41	W44	W47	W20	L5	4-2
17. Gaylor E	W15	W9	L8	W43	L23	W47	4-2
18. Gross R	W75	W72	D1	L4	D28	W38	4-2
19. Kennedy E	W6	L33	L67	W72	W50	W59	4-2
20. Kliger J	W57	L7	W49	W14	L16	W46	4-2
21. Metz F	W31	W29	L13	W33	L6	W43	4-2
22. Pilnick C	W84	W47	L41	L38	W56	W24	4-2
23. Rivise I	D60	W52	W25	L11	W17	D6	4-2
24. Benge D	L76	W75	W72	W40	D36	L22	$3\frac{1}{2}-2\frac{1}{2}$
25. Burke F	D34	W37	L23	W57	L7	W63	$3\frac{1}{2}-2\frac{1}{2}$
26. Hanken J	W74	L12	W55	L46	W45	D28	$3\frac{1}{2}-2\frac{1}{2}$

THE CALIFORNIA CHESS REPORTER

3

	1	2	3	4	5	6	Score
27. Hunnex G	W79	L10	D57	D63	W42	D31	3½-2½
28. Laver R	W55	L8	W48	D29	D18	D26	3½-2½
29. Martin R	W53	L21	W30	D28	W39	L11	3½-2½
30. Milner H	W44	L40	L29	W85	D33	W70	3½-2½
31. Myhro R	L21	W53	L14	W77	W40	D27	3½-2½
32. Raymond A	D37	W34	W59	W7	L12	L9	3½-2½
33. Rubin G	W71	W19	L10	L21	D30	W56	3½-2½
34. Smyth F	D25	L32	W78	L59	W60	W61	3½-2½
35. Titone J	D78	D60	L46	W76	D37	W52	3½-2½
36. Troy A	W81	W56	W39	L10	D24	L7	3½-2½
37. Allen B	D32	L25	D58	W83	D35	D39	3-3
38. Almgren S	W46	L13	W65	W22	L8	L18	3-3
39. Bersbach E	W51	D2	L36	W60	L29	D37	3-3
40. Brieger R	W54	W30	L3	L24	L31	W72	3-3
41. Celle O	W42	W16	W22	L1	L13	L14	3-3
42. Collins B	L41	W84	L43	W80	L27	W69	3-3
43. Freeman R	W49	L3	W42	L17	W51	L21	3-3
44. Edelstein H	L30	W54	L16	W71	L14	W58	3-3
45. Gilbert A	L50	W85	L9	W82	L26	W74	3-3
46. Kocsis Z	L38	W64	W35	W26	L2	L20	3-3
47. Mego J	W66	L22	W74	L16	W70	L17	3-3
48. Pease R	L3	Wbye	L28	L74	W80	W66	3-3
49. Rogosin D	L43	W62	L20	W65	W67	L15	3-3
50. Studnicki W	W45	L5*	D60	D66	L19	W64	3-3
51. Walker D	L39	W77	L2	W69	L43	W68	3-3
52. Castle R	D61	L23	L66	W75	W57	L35	2½-3½
53. Detrich J	L29	L31	L62	D79	W81	W76	2½-3½
54. Fotias C	L40	L44	L69	W84	D77	W78	2½-3½
55. Haley C	L28	W73	L26	D58	D64	D62	2½-3½
56. Homolka V	W67	L36	W76	D9	L22	L33	2½-3½
57. Howe R	L20	W80	D27	L25	L52	W77	2½-3½
58. Jester T	L4	D66	D37	D55	W71	L44	2½-3½
59. Kalisch J	W68	D76	L32	W34	L9	L19	2½-3½
60. Kluz R	D23	D35	D50	L39	L34	W79	2½-3½
61. Kupersmith L	D52	W78	L4	L6	W74	L34	2½-3½
62. Soruco E	L10	L49	W53	L70	W82	D55	2½-3½
63. Stani K	L11	W82	L6	D27	W76	L25	2½-3½
64. Gardner R	L16	L46	D75	W78	D55	L50	2-4
65. Kleinich M	L7	W79	L38	L49	L68	W82	2-4
66. Levin T	L47	D58	W52	D50	L15	L48	2-4

THE CALIFORNIA CHESS REPORTER

Southern California Open	1	2	3	4	5	6	Score
67. Loveless R	L56	W81	W19	L2	L49	-	2-4
68. Murphy G	L59	L15	L77	Wbye	W65	L51	2-4
69. Pollard B	L1	L70	W54	L51	W73	L42	2-4
70. Rogosin H	L2	W69	L15	W62	L47	L30	2-4
71. Smith A	L33	L6	W73	L44	L58	W80	2-4
72. Stevenson	Wbye	L18	L24	L19	W85	L40	2-4
73. Teal W	L8	L55	L71	W81	L69	W85	2-4
74. Wilson W	L26	W83	L47	W48	L61	L45	2-4
75. Fagin V	L18	L24	D64	L52	L79	W84	1½-4½
76. Hamilton B	W24	D59	L56	L35	L63	L53	1½-4½
77. Kleinich A	L13	L51	W68	L31	D54	L57	1½-4½
78. Rader H	D35	L61	L34	L64	W83*	L54	1½-4½
79. Schlosser M	L27	L65	L82	D53	W75	L60	1½-4½
80. Gray M	L14	L57	W81	L42	L48	L71	1-5
81. Karol J	L36	L67	L80	L73	L53	Wbye	1-5
82. Rains S	L9	L63	W79	L45	L62	L65	1-5
83. Rogosin P	L12	L74	Wbye	L37	L78*	-	1-5
84. Vogt H	L22	L42	L85	L54	Wbye	L75	1-5
85. Whittemore R	L5	L45	W84	L30	L72	L73	1-5

* Forfeit.

SARLEY, STANI TIE FOR SOUTHERN CALIFORNIA EXPERT TITLE
FINALS — EXPERTS CANDIDATES, June 30-July 1, 1962

	1	2	3	4	Total	Carry-over	Grand Total
1. Sarley Dr M	W15	W9	W7	W4	4-0	4½-1½	8½-1½
2. Stani K	W11	W14	W10	W3	4-0	4½-1½	8½-1½
3. Book E	W16	W7	L4	L2	2-2	6-0	8-2
4. Myhro R	W6	W13	W3	L1	3-1	5-1	8-2
5. Pfeiffer K	W17	W16	D13	W10	3½-½	4½-1½	8-2
6. Alza W	L4	D17	W16	W9	2½-1½	5-1	7½-2½
7. Jimenez E	W9	L3	L1	W13	2-2	5½-½	7½-2½
8. Hernandez B	L10	W15	D12	W16	2½-1½	4-2	6½-3½
9. Keesey H	L7	L1	W17	L6	1-3	5½-½	6½-3½
10. Nusbaum G	W8	W12	L2	L5	2-2	4½-1½	6½-3½
11. Parker S	L2	W18*	W14	D12	2½-1½	4-2	6½-3½
12. Pye F	W18*	L10	D8	D11	2-2	4½-1½	6½-3½
13. Sleep F	W14	L4	D5	L7	1½-2½	5-1	6½-3½
14. Pugh W	L13	L2	L11	Bye	1-3	5-1	6-4
15. Rains S	L1	L8	Bye	D17	1½-2½	4½-1½	6-4
16. Katzl R	L3	L5	L6	L8	0-4	5½-½	5½-4½
17. Turner J	L5	D6	L9	D15	1-3	4½-1½	5½-4½
18. Jones Dr	L12*	L11*	-	-	0-4	4½-1½	4½-5½

* Forfeit.

Dr. Martin Sarley of Pasadena and Karl Stani of Los Angeles came from behind on June 30-July 1 and topped the finalists in the Southern California Expert Candidates Tournament. In a toss of the coin to see who would get the \$200 gold-and-silver-plated chess set donated by the Scott-Mitchell Company, Sarley won and Stani had to be content with the \$50 second prize. The tournament director was Gordon Barrett.

The finalists were the survivors of seven preliminary sections. Only two of the preliminary sections are on hand at this report:

PRELIMINARIES — EXPERTS CANDIDATES, May-June, 1962

Downey Section	1	2	3	4	5	6	Score
1. Keesey H	W14	W10	W8	D2	W5	W3	5½-1½
2. Pye F	W6	W12	W3	D1	W7	L4	4½-1½
3. Bylinkin B	W5	W15	L2	W8	W9	L1	4-2
4. Postma J	W11	L8	L7	W15	W12	W2	4-2
5. Benz R	L3	W13	W12	W9	L1	W7	4-2
6. Goddard H	L2	W11	W15	L7	W10	W8	4-2
7. Young L	L10	W14	W4	W6	L2	L5	3-3
8. Metzger W	W9	W4	L1	L3	W15	L6	3-3
9. Van't Hof G	L8	W16	W10	L5	L3	W14	3-3
10. Stillman J	W7	L1	L9	W13	L6	L11	2-4
11. Pridanoff R	L4	L6	W14	L12	L16	W10	2-4
12. Coughlin N	W16	L2	L5	W11	L4	L13	2-4
13. Gain B	L15	L5	W16	L10	L14	W12	2-4
14. Bell J	L1	L7	L11	W16	W13	L9	2-4
15. King W	W13	L3	L6	L4	L8	W16	2-4
16. Otzinger B	L12	L9	L13	L14	W11	L15	1-5
North Hollywood Section	1	2	3	4	5	6	Score
1. Myhro R	W7	W6	W2	L4	W3	W5	5-1
2. Turner J	W3	W10	L1	W11	W4	D7	4½-1½
3. Hernandez B	L2	W7	W8	W10	L1	W4	4-2
4. Mercy-Milner	D8	W13	W9	W1	L2	L3	3½-2½
5. Hagedorn R	L6	D8	W13	W9	W10	L1	3½-2½
6. Lane W	W5	L1	L10	W8	D9	W11	3½-2½
7. Seiden L	L1	L3	Bye	W12	W11	D2	3½-2½
8. Krohn	D4	D5	L3	L6	W12	W10	3-3
9. Methven	D13	W11	L4	L5	D6	W12	3-3
10. Parker S	W12	L2	W6	L3	L5	L8	2-4
11. McCardle	Bye	L9	W12	L2	L7	L6	2-4
12. Kaiser	L10	Bye	L11	L7	L8	L9	1-5
13. Colby W	D9	L4	L5	-	-	-	½-5½

ADDISON WINS 2ND ANNUAL HAMILTON A. F. B. OPEN

Bill Addison added another title to his collection when he won the Hamilton Air Force Base Open held June 15-17, 1962. Addison had a perfect score of 6-0. Rex Wilcox, Bill Haines, and Bob Henry tied for second with 5-1 scores. Other prizes were won by Henry (A), R. Creet (B), R. Goudswaard (C), M. Goodall (H. A. F. B.), W. Wilson of Wisconsin (travel prize), and L. Trottier (sportsmanship). There was \$137 in cash prizes plus six books. The 35-man field was directed by Chuck Savery.

Hamilton AFB Open	1	2	3	4	5	6	Score	Tie-Br.
1. Addison Wm	W22	W18	W12	W2	W8	W5	6-0	22½
2. Wilcox Rex	W35	W15	W24	L1	W3	W16	5-1	19½
3. Haines WC	W31	W25	W16	W5	L2	W12	5-1	19
4. Henry RL	D27	D26	W13	W24	W15	W17	5-1	16
5. Osbun Eric	W17	W6	W7	L3	W18	L1	4-2	25
6. McIlrath Jim	W9	L5	W10	D12	D16	W15	4-2	21½
7. Kane George	W14	W11	L5	W20	L12	W18	4-2	21
8. Hoppe Roy	W33	W10	W19	W17	L1	L9	4-2	21
9. Rubin Sid	L6	W29	W23	L15	W25	W8	4-2	17½
10. Goudswaard R	W28	L8	L6	W31	W24	W22	4-2	17
11. Bulash John	Bye	L7	L28	W33	W26	W19	4-2	
12. Rasmussen G	W29	W23	L1	D6	W7	L3	3½-2½	23½
13. Creet R	L16	W34	L4	D14	W31	W25	3½-2½	16
14. O'Doan LaRoy	L7	Bye	L15	D13	W33	W32	3½-2½	
15. Eaton Bud	W20	L2	W14	W9	L4	L6	3-3	24½
16. Von Oettingen S	W13	D19	L3	W26	D6	L2	3-3	22½
17. Blackstone John	L5	W27	W22	L8	W29	L4	3-3	20
18. Gross Dr Ben	W34	L1	W25	W28	L5	L7	3-3	19
19. Harris Frank	W30	D16	L8	D23	W20	L11	3-3	18½
20. McLennan M	L15	W32	W21	L7	L19	W29	3-3	16
21. Goodall Mike	L25	W31	L20	L29	W30	W23	3-3	13
22. McClary RP	L1	W30	L17	W34	W28*	L10	3-3	
23. McCarter S	W26	L12	L9	D19	W34	L21	2½-3½	16½
24. Irwin R	W32	W35*	L2	L4	L10	D27	2½-3½	
25. Mancini LJ	W21	L3	L18	W32	L9	L13	2-4	19½
26. Dasteel H	L23	D4	W27	L16	L11	D31	2-4	18
27. Moritz Hank	D4	L17	L26	L30	W32	D24	2-4	15½
28. Henderson R	L10	W33	W11	L18	L22*	-	2-4	
29. Wylie S	L12	L9	Bye	W21	L17	L20	2-4	
30. Vayssie Paul	L19	L22	L31	W27	L21	W34*	2-4	
31. Cardenas F	L3	L21	W30	L10	L13	D26	1½-4½	19½
32. Wilson W	L24	L20	W33	L25	L27	L14	1-5	14
33. Trottier L	L8	L28	L32	L11	L14	Bye	1-5	
34. Finley Dr Hal	L18	L13	W35*	L22	L23	L30*	1-5	
35. Whittemore R	L2	L24*	-	-	-	-	0-6	

* Forfeit.

RIVERSIDE CHESS CLUB

Charles B. Walker won the club championship, held from November, 1961, to February, 1962. Walker had a near-perfect $12\frac{1}{2}$ - $\frac{1}{2}$ score. Tied for second with $10\frac{1}{2}$ - $2\frac{1}{2}$ scores were Wayne Turman and Donald Cotten.

RIVERSIDE CLUB CHAMPIONSHIP, 1962

	1	2	3	4	5	6	7	8	9	10	11	12	13	14	Score
1. Walker C	X	$\frac{1}{2}$	1	1	1	1	1	1	1	1	1	1	1	1	$12\frac{1}{2}$ - $\frac{1}{2}$
2. Turman W	$\frac{1}{2}$	X	$\frac{1}{2}$	$\frac{1}{2}$	1	0	1	1	1	1	1	1	1	1	$10\frac{1}{2}$ - $2\frac{1}{2}$
3. Cotten D	0	$\frac{1}{2}$	X	1	1	0	1	1	1	1	1	1	1	1	$10\frac{1}{2}$ - $2\frac{1}{2}$
4. Giles W	0	$\frac{1}{2}$	0	X	0	1	1	1	1	$\frac{1}{2}$	1	1	1	1	9-4
5. Carter J	0	0	0	1	X	1	0	1	1	1	1	1	1	1	9-4
6. Katz H	0	1	1	0	0	X	1	1	0	1	0	1	1	1	8-5
7. Watson D	0	0	0	0	1	0	X	0	1	1	1	1	1	1	7-6
8. Lewis W	0	0	0	0	0	1	X	1	1	1	1	1	1	1	7-6
9. Schnur S	0	0	0	0	0	1	0	0	X	1	1	1	1	1	6-7
10. Myers R	0	0	0	$\frac{1}{2}$	0	0	0	0	0	X	1	0	1	1	$3\frac{1}{2}$ - $9\frac{1}{2}$
11. Brickey V	0	0	0	0	0	1	0	0	0	0	X	0	1	1	3-10
12. Rankin A	0	f	0	0	f	f	0	f	f	1	1	X	f	0	2-11
13. Maple L	0	f	0	0	0	0	0	0	0	0	0	1	X	1	2-11
14. Johnson M	f	f	f	f	f	f	f	f	f	f	f	1	f	X	1-12

Donald Cotten won the Vernal Prize Tournament, held during April and May, with a perfect 4-0 score. Tied for second were William Giles, Forest Smyth, and Wayne Turman. Improvement prizes were won by Herb Katz and Vern Brickey. The tournament director was Forest Smyth.

RIVERSIDE VERNAL PRIZE TOURNAMENT, 1962

	1	2	3	4	Score	S. B.	Solkoff
1. Cotten D	W13	W8	W7	W2	4-0	$7\frac{1}{2}$	$7\frac{1}{2}$
2. Giles W	W11	W3	W6	L1	3-1	$6\frac{1}{2}$	$10\frac{1}{2}$
3. Smyth F	W9	L2	W10	W7	3-1	6	9
4. Turman W	W10	L7	W12*	W9	3-1	4	6
5. Katz H	D8	L6	W13	W12	$2\frac{1}{2}$ - $1\frac{1}{2}$	$3\frac{1}{2}$	$6\frac{1}{2}$
6. Noel L	D12	W5	L2	D8	2-2	$4\frac{1}{2}$	$9\frac{1}{2}$
7. McKone J	W15	W4	L1	L3	2-2	$3\frac{1}{2}$	$10\frac{1}{2}$
8. Schlosser M	D5	L1	W14	D6	2-2	$2\frac{3}{4}$	9
9. Carter J	L3	W13	W11	L4	2-2	2	8
10. Schnur S	L4	W15	L3	W14	2-2	1	7
11. Brickey V	L2	Bye	L9	W15	2-2	$\frac{1}{2}$	$5\frac{1}{2}$
12. Manderson E	D6	W14	L4*	L5	$1\frac{1}{2}$ - $2\frac{1}{2}$	$1\frac{1}{2}$	5
13. Watson D	L1	L9	L5	Bye	1-3	0	$8\frac{1}{2}$
14. Brandt O	Bye	L12	L8	L10	1-3	0	6
15. Myers R	L7	L10	Bye	L11	1-3	0	$5\frac{1}{2}$

GAME OF THE MONTH

An international flavor is attached to this month's selected game. In March 1962 Tijuana, B. C., beat San Diego $7\frac{1}{2}$ - $3\frac{1}{2}$ and won the four-round team match by a final score of $24\frac{1}{2}$ - $19\frac{1}{2}$. In the final round Alfred P. Coles III of La Jolla won his game with Senor J. Jesus de Mondragon, 1958 chess champion of Mexico. This was Mondragon's single loss in the match. The San Diego team was composed of players from the Balboa Club. In a 13-board simultaneous exhibition at the Balboa Club, Senor Mondragon won 11 of 13 games, losing only to A. P. Coles III and Newton Grant.

The participants of the Game-of-the-Month played to the occasion by indulging in an old-fashioned gambit. Not only does White make the offer, but Black, with Q-K2 instead of Q-Q2, tacitly offers a whole piece for the chance to keep White's King in the center. Even after a reduction in force, both sides threaten mate — and the final result comes only when White over-extends himself.

SAN DIEGO-TIJUANA, 1962

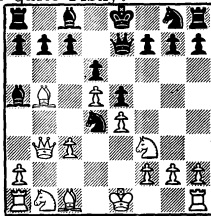
Game No. 699, Evans Gambit
 White Black
 J. Mondragon A. P. Coles III

- | | |
|-----------|--------|
| 1. P-K4 | P-K4 |
| 2. Kt-KB3 | Kt-QB3 |
| 3. B-B4 | B-B4 |
| 4. P-QKt4 | BxP |
| 5. P-B3 | B-R4 |
| 6. P-Q4 | P-Q3 |
| 7. Q-Kt3 | Q-K2! |

Q-Q2 is the safer line.

- | | |
|------------|-------|
| 8. P-Q5 | Kt-Q5 |
| 9. B-Kt5ch | ... |

Q-R4ch is recommended. But 9. KtxKt, PxKt; 10. Q-R4ch, K-B1; 11. QxB, QxPch; 12. K-Q2 is quite risky.



- | | |
|--------|------|
| 9. ... | K-Q1 |
|--------|------|

- | | |
|-----------|-------|
| 10. KtxKt | PxKt |
| 11. 0-0 | Kt-B3 |
| 12. P-K5 | QxP |
| 13. PxP | Q-R4 |

Also possible was 13... QxP/4;
 14. B-QB4, Q-KB4; 15. BxP, P-Q4!

- | | |
|-----------|--------|
| 14. Kt-B3 | B-Kt3 |
| 15. B-K3 | P-QR3 |
| 16. B-K2 | Q-Kt3 |
| 17. P-QR4 | R-QKt1 |
| 18. QR-B1 | ... |

P-R5 first is better.

- | | |
|-----------|--------|
| 18. ... | R-K1 |
| 19. Q-Kt4 | Kt-Kt5 |
| 20. P-R5 | B-R2 |
| 21. Q-B4 | R-K2 |
| 22. BxKt | BxB |
| 23. KR-K1 | B-R6 |
| 24. P-Kt3 | Q-Kt5 |
| 25. Q-K2 | Q-B4 |
| 26. P-B3? | BxP |
| 27. Q-KB2 | BxB |
| 28. RxB | RxR |
| 29. QxR | Q-K4 |
| 30. Q-R7 | R-B1 |
| 31. Q-B2 | K-Q2 |
| 32. Q-Q2 | R-K1 |
| 33. Kt-K4 | B-B4 |
| 34. Q-QB2 | R-QB1 |

35. Q-R4ch	K-K2	45. K-B1	Q-Q6ch
36. R-K1	K-B1	46. K-Kt2	Q-Q7ch
37. Q-Kt3	Q-Q5ch	47. K-R3	QxR
38. K-Kt2	R-K1	48. QxP	P-B5ch
39. QxP	Q-B5	49. P-Kt4	Q-K2
40. K-B2	Q-Q5ch	50. KtxPch	K-Kt1
41. K-Kt2	Q-B5	51. Q-B2	Q-KB2
42. K-B2	B-B1	52. Kt-Kt5	Q-R4ch
43. Q-Kt8	P-KB4	Resigns.	
44. Kt-Kt5	Q-Q5ch		

1962 CALIFORNIA OPEN CHESS CHAMPIONSHIP

CALIFORNIAN HOTEL 7-ROUND SWISS SEPTEMBER 1-2-3, 1962
 Fresno, California 100% USCF Rated Labor Day Week End

ENTRY FEE: \$6.00 (\$5.50 under-21) plus
 (\$2.50) CSCF membership and
 (\$5.00) USCF membership.

PRIZES: First Prize: More than \$100 and trophy.
 Other substantial cash prizes.
 Winner will be seeded into the finals of
 the State Championship.

REGISTRATION: International Grandmaster Isaac Kashdan at
 HOTEL CALIFORNIAN, Fresno, California.
 Friday afternoon & evening, August 31, and
 Saturday morning, September 1, 8:30-9:00 a.m.

ROUND 1:	10:00 am	Saturday	9/1/62	- 30	moves	per	hour.
ROUND 2:	2:30 pm	Saturday		- 30	"	"	"
ROUND 3:	8:30 pm	Saturday		- 40	moves	in	two hours.
ROUND 4:	11:00 am	Sunday	9/2/62	- 40	"	"	"
ROUND 5:	7:00 pm	Sunday		- 40	"	"	"
ROUND 6:	9:00 am	Monday	9/3/62	- 40	"	"	"
ROUND 7: approx.	3:00 pm	Monday		- 40	"	"	"

TOURNAMENT DIRECTOR: H.T. Abel, 126 Bicknell Ave., Santa Monica
 (tentative until confirmed).

The Californian Hotel is air-conditioned.
 Play will take place in the large ballroom.
 Entrants are urged to bring chess sets and clocks.

KAKIMI WINNER AT CITY TERRACE

Ben Kakimi defeated a strong field of experts in the City Terrace invitational held from May to July. Kakimi lost only one game, to runner-up Sidney Weinbaum, and drew two games. The cross-table:

CITY TERRACE EXPERTS INVITATIONAL, May-July 1962

	1	2	3	4	5	6	7	8	9	10	Score
1. Kakimi B	×	0	$\frac{1}{2}$	$\frac{1}{2}$	1	1	1	1	1	1	7-2
2. Weinbaum S	1	×	0	1	0	1	$\frac{1}{2}$	1	1	1	$6\frac{1}{2}$ - $2\frac{1}{2}$
3. Earnest J	$\frac{1}{2}$	1	×	1	$\frac{1}{2}$	1	$\frac{1}{2}$	1	1	1	6-3
4. Hanken J	$\frac{1}{2}$	0	0	×	1	1	1	$\frac{1}{2}$	1	1	6-3
5. Barrett G	0	1	$\frac{1}{2}$	0	×	$\frac{1}{2}$	0	1	$\frac{1}{2}$	1	$4\frac{1}{2}$ - $4\frac{1}{2}$
6. Reina M	0	0	0	0	$\frac{1}{2}$	×	1	1	1	1	$4\frac{1}{2}$ - $4\frac{1}{2}$
7. Syvertsen R	0	$\frac{1}{2}$	$\frac{1}{2}$	0	1	0	×	0	1	0	3-6
8. Amneus D	0	0	0	$\frac{1}{2}$	0	0	1	×	0	1	$2\frac{1}{2}$ - $6\frac{1}{2}$
9. Hultgren N	0	0	1	0	$\frac{1}{2}$	0	0	1	×	0	$2\frac{1}{2}$ - $6\frac{1}{2}$
10. Szirmay S	0	0	$\frac{1}{2}$	0	0	0	1	0	1	×	$2\frac{1}{2}$ - $6\frac{1}{2}$

FAIRFAX AGAIN LOS ANGELES HIGH SCHOOL CHAMPIONS

The Fairfax High School chess team scored $21\frac{1}{2}$ points of a possible 24 to win first place in the 11th annual Los Angeles City High School tournament held at Hollywood High School. A total of 120 participants representing 25 schools enrolled in the event.

The top-ranking players for Fairfax were captain Jack Friedman with $5\frac{1}{2}$, Joel Goldberg with 6, and Norman Prinsky and David Cohen, 5 each. This was the sixth victory in the last seven years for Fairfax.

Second place went to Hollywood High School with a total of $17\frac{1}{2}$ points. Other winning schools were Dorsey, $16\frac{1}{2}$, Venice, 16, and South Gate, $15\frac{1}{2}$.

Other top-individual scorers and the schools they represented are David Gimpel, Los Angeles, 6; Jerome Levin, Grant, $5\frac{1}{2}$; Michael Sheehan and Gary Walsh, Dorsey, 5; William Tomlinson, Hollywood, 5; Lance Gresham, Grant, $4\frac{1}{2}$; Rick Holt, South Gate, $4\frac{1}{2}$; and Louis Portillo, Franklin, $4\frac{1}{2}$.

Norman Gottlieb, teacher at Hollywood High School, directed the tournament. Isaac Kashdan, Allan Troy, and Irving Rivise helped to adjudicate games.

LOS ANGELES PLAYGROUND BOYS TOURNAMENT

Louis Portillo, 16, won the 1962 senior division of the Los Angeles playground chess tournament for 1962, held at the Swim Stadium on July 7. George Kadar, 16, was second. Lance Kerr, 13, won the junior division, with Steven Hohensee, 13, second. Competitors were selected from city-wide preliminaries held during June.

GAMES

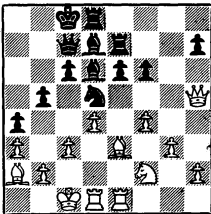
NORTH-SOUTH MATCH 6/3/62

Game No. 700, Bd. 4, French Def.

White (S) Black (N)
A. Troy W. Pafnutieff

- | | |
|------------|--------|
| 1. P-K4 | P-K3 |
| 2. P-Q4 | P-Q4 |
| 3. Kt-QB3 | PxP |
| 4. KtxP | Kt-Q2 |
| 5. B-K3 | KKt-B3 |
| 6. KtxKtch | PxKt |
| 7. B-QB4 | P-QB3 |
| 8. Kt-R3 | Q-B2 |
| 9. Q-R5 | Kt-Kt3 |
| 10. B-Kt3 | B-Q2 |
| 11. 0-0-0 | P-R4 |
| 12. P-R3 | Kt-Q4 |
| 13. KR-K1 | P-R5 |
| 14. B-R2 | P-Kt4 |
| 15. P-QB3 | B-Q3 |
| 16. P-KKt3 | 0-0-0! |
| 17. QxBP | KR-B1 |
| 18. Q-R5 | ... |
| 19. Q-K2 | B-Q2 |
| 20. P-KB4 | KR-K1 |
| 21. Q-R5 | R-K2 |
| 22. Kt-B2 | ... |

If QxRP, P-KB4 could cause difficulties.

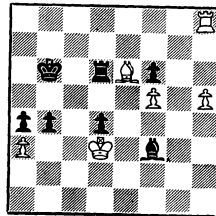


- | | |
|---------|------|
| 22. ... | BxRP |
| 23. PxB | Q-Q3 |

- | | |
|------------------------------|-------|
| 24. K-Kt2 | B-K1 |
| 25. Kt-K4 | ... |
| If Q-K2, KtxQBP with attack. | |
| 25. ... | BxQ |
| 26. KtxQch | RxKt |
| 27. R-Q2 | KtxB |
| 28. RxKt | K-Q1 |
| 29. B-Kt1 | B-Kt3 |
| 30. B-R2 | P-QB4 |
| 31. P-Kt4? | ... |

K-B1 necessary.

- | | |
|-------------|---------|
| 31. ... | P-K4 |
| 32. P-B5 | B-K1 |
| 33. K-B2 | BPxP |
| 34. PxP | R-B2 ch |
| 35. R-B3 | PxP |
| 36. RxR | KxR |
| 37. K-Q3 | B-B3 |
| 38. R-K2 | B-B6 |
| 39. R-K7 ch | K-B3 |
| 40. R-KKt7 | P-R4 |
| 41. PxP | BxP |
| 42. B-Q6 | K-Kt3 |
| 43. P-R4 | K-B4 |
| 44. R-KR7 | B-B6 |
| 45. P-R5 | K-Kt3 |
| 46. R-R8 | P-Kt5 |



- | | |
|---------------------|-------|
| 47. PxP? (R-Kt8ch!) | |
| 47. ... | P-R6 |
| 48. P-R6 | RxB |
| 49. P-R7 | P-R7 |
| 50. R-Kt8 ch | K-R2! |

51.	P-R8/Q	P-R8/Q
52.	R-R8 ch	BxR
53.	Q-Kt7 ch	K-Kt3
54.	PxR	Q-B6ch
55.	K-K2	Q-K6ch
56.	K-B1	Q-B5 ch
57.	K-K1	Q-K6 ch
58.	K-B1	P-Q6
59.	P-K7	Q-B6ch
60.	K-Kt1	P-Q7

Resigns.

30.	R-Q3	KtxP
31.	P-KB3	P-B4
32.	K-B1	Kt-Q3
33.	P-B3	P-B5
34.	R-Q2	P-Q6

Resigns.

Game No. 702, Bd. 14, Nimzo-Indian

White (S)	Black (N)
N. Robinson	Dr. F. Ruys

Game No. 701, Bd. 8, King's Indian

White (S)	Black (N)
N. Hultgren	W. C. Haines

1.	P-Q4	Kt-KB3
2.	Kt-KB3	P-KKt3
3.	P-K3	B-Kt2
4.	B-Q3	0-0
5.	P-K4	P-Q3
6.	0-0	P-K4
7.	PxP	PxP
8.	Kt-B3	QKt-Q2
9.	B-KKt5	P-B3
10.	Q-K2	Q-B2
11.	P-QKt4	R-K1
12.	KR-Q1	Kt-B1
13.	B-QB4	B-K3
14.	R-Q2	QR-Q1
15.	QR-Q1	RxR
16.	RxR	P-QR4
17.	P-QR3	PxP
18.	PxP	P-QKt4
19.	BxB	KtxB
20.	B-R4	Kt-Q2
21.	Q-Q1	Kt-Kt3
22.	Kt-Kt5	Kt-Q5
23.	R-Q3	Kt-B5
24.	R-KR3	P-R3
25.	Kt-B3	Q-Q3
26.	KtxKt	PxKt
27.	Kt-K2	QxP
28.	R-QKt3	Q-Q7
29.	QxQ	KtxQ

1.	P-QB4	P-K3
2.	P-Q4	Kt-KB3
3.	Kt-QB3	B-Kt5
4.	B-Q2	P-B4
5.	P-QR3	BxKt
6.	BxB	PxP
7.	QxP	0-0

Not Kt-B3 here or later, because of Q-R4.

8.	Kt-B3	P-Q4
9.	R-Q1	Q-B2
10.	Q-R4	QKt-Q2
11.	P-B5	...

Interesting maneuver, but weakens Q5. Black takes advantage.

11.	...	P-QR4
12.	P-QKt4	P-QKt3
13.	P-K3	PxBP
14.	P-Kt5	P-K4
15.	Q-Kt3?	...

Gives up exchange for several pawns.

15.	...	Kt-K5
16.	BxP	KtxQ
17.	BxQ	KtxR
18.	RxP	Kt-B3!

The Kt escapes.

19.	RxP	...
-----	-----	-----

Better R-Q1.

19.	...	KtxP!
20.	B-Q6	R-K1
21.	B-K5	Kt/7-K5
22.	R-B7	Kt-Q4

23. R-B4	Kt/5-B3	23. ...	KtxR
24. P-K4	Kt-Kt3	24. KtxKt	B-K4
25. R-Q4	Kt/B-Q2	25. Q-B2	Q-Kt2
26. BxKt	KtxB	26. Kt-KB3	BxP
27. B-Q3	B-Kt2	27. KtxB	QxKt
28. Kt-Q2	QR-Q1	28. Kt-Kt5	RxRP
Resigns.		29. P-KKt4	QxKP
		Resigns.	

Game No. 703, Bd. 27, English

White (N) Black (S)
 F. V. Kimball C. J. Gibbs

(Notes by the winner.)

- | | |
|-----------|--------|
| 1. P-QB4 | P-K4 |
| 2. Kt-QB3 | P-KKt3 |
| 3. P-KKt3 | B-Kt2 |
| 4. B-Kt2 | P-Q3 |
| 5. P-Q3 | P-QB3 |
| 6. Kt-KB3 | B-Q2 |
| 7. P-QR3 | Kt-KB3 |
| 8. B-K3 | Kt-Kt5 |
| 9. 0-0 ? | ... |

B-Q2! was better because this exchange doubled the KP which was a target for most of the game.

- | | |
|------------|--------|
| 9. ... | KtxB |
| 10. PxKt | 0-0 |
| 11. R-QB1 | P-QR4 |
| 12. Q-Q2 | B-R3 |
| 13. P-Q4 | PxP |
| 14. KtxP | R-K1 |
| 15. Kt-Q1 | Q-K2 |
| 16. R-QB3 | P-R5 |
| 17. Q-K1 | B-Kt2 |
| 18. R-Q3 | Kt-R3 |
| 19. Q-B2 | Kt-B4 |
| 20. R-Q2 | P-B4 |
| 21. Q-B4 | B-B3 |
| 22. Kt-KB3 | Kt-K5! |

22... Kt-K5 threatens to win a piece by 23... P-KKt4!

- | | |
|-----------|-----|
| 23. P-KR4 | ... |
|-----------|-----|

Better to lose the exchange than a piece.

HAMILTON A. F. B. OPEN June 1962

Game No. 704, Rd. 5, King's Indian

White Black
 G. Rasmussen G. Kane

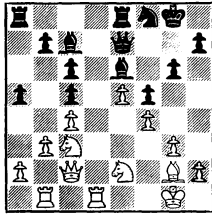
- | | |
|--------------|----------|
| 1. P-Q4 | Kt-KB3 |
| 2. P-QB4 | P-KKt3 |
| 3. Kt-QB3 | B-Kt2 |
| 4. P-K4 | P-Q3 |
| 5. P-B3 | 0-0 |
| 6. B-K3 | P-K4 |
| 7. P-Q5 | P-B3 |
| 8. Q-Q2 | PxP |
| 9. BPxP | P-QR3 |
| 10. P-KKt4 | P-KR4 |
| 11. PxP | KtxP |
| 12. 0-0-0 | Kt-Q2 |
| 13. KKt-K2 | P-QKt4 |
| 14. Kt-Kt3 | Kt/R4-B3 |
| 15. P-KR4 | Q-B2 |
| 16. K-Kt1 | Kt-Kt3 |
| 17. P-R5 | B-Q2 |
| 18. R-B1 | Kt-B5 |
| 19. BxKt | PxB |
| 20. B-R6 | QR-Kt1 |
| 21. QR-Kt1 | Kt-K1 |
| 22. Kt-B5 | BxKt |
| 23. PxB | Q-Q2 |
| 24. BPxP | PxP |
| 25. RxP | R-B2 |
| 26. Q-Kt5 | K-R1 |
| 27. R-Kt1 | R-Kt2 |
| 28. Kt-K4 | Q-Kt4 |
| 29. BxB ch | RxB |
| 30. Q-R6ch | K-Kt1 |
| 31. Kt-B6 ch | K-B1 |
| 32. Q-R8 ch | Resigns. |

Game No. 705, Rd. 4, King's Indian

White	Black
E. Osburn	W. C. Haines

After an enterprising sacrifice (21. Kt-Q5!), White lets his advantage slip by allowing the Queenside to be opened up. 30... Q-B2 is well-calculated — the discovered check possibilities avail White nothing.

- | | |
|------------|--------|
| 1. P-Q4 | Kt-KB3 |
| 2. P-QB4 | P-KKt3 |
| 3. Kt-QB3 | B-Kt2 |
| 4. P-KKt3 | 0-0 |
| 5. B-Kt2 | P-Q3 |
| 6. Kt-B3 | QKt-Q2 |
| 7. 0-0 | P-K4 |
| 8. Q-B2 | P-B3 |
| 9. R-Q1 | Q-K2 |
| 10. P-K4 | R-K1 |
| 11. R-Kt1 | PxP |
| 12. KtxP | Kt-B4 |
| 13. P-B3 | P-QR4 |
| 14. KKt-K2 | KKt-Q2 |
| 15. P-Kt3 | Kt-B1 |
| 16. B-B4 | B-K4 |
| 17. B-K3 | P-B4 |
| 18. BxKt | PxB |
| 19. P-B4 | B-B2 |
| 20. P-K5 | B-K3 |



- | | |
|------------|------|
| 21. Kt-Q5! | PxKt |
| 22. PxP | B-B2 |
| 23. P-Q6 | BxP |

- | | |
|------------|--------|
| 24. RxP | QR-B1 |
| 25. Kt-B3 | KR-Q1 |
| 26. QR-Q1 | K-Kt2 |
| 27. QR-Q2 | P-B5 |
| 28. PxP | RxR |
| 29. RxR | RxP |
| 30. Q-Kt2 | Q-B2! |
| 31. Kt-Kt5 | Q-B4ch |
| 32. Kt-Q4 | Kt-K3 |
| 33. R-Q5 | Q-R2 |
| 34. K-R1 | RxKt |
| 35. RxR | QxR |
| 36. QxQ | KtxQ |
| 37. BxP | BxP |
- Resigns.

OAKLAND Y. M. C. A. June 22, 1962

Game No. 706, Reti

- | | |
|--------------|----------|
| White | Black |
| R. Trenberth | Oyler |
| 1. P-KKt3 | P-K4 |
| 2. P-K3 | Kt-KB3 |
| 3. P-Q4 | PxP |
| 4. PxP | P-Q4 |
| 5. B-Kt2 | Kt-B3 |
| 6. Kt-K2 | B-K2 |
| 7. 0-0 | 0-0 |
| 8. P-QB3 | B-KKt5 |
| 9. P-KR3 | B-R4 |
| 10. Kt-Q2 | P-KR3 |
| 11. P-QKt4 | R-K1 |
| 12. P-Kt4 | KtxKKtP |
| 13. Kt-KB4 | Kt-K6 |
| 14. QxB | KtxR |
| 15. BxP | R-KB1 |
| 16. KtxKt | Q-Q3 |
| 17. Kt-Kt3 | Q-B3 |
| 18. Kt-Kt6 | B-Q3 |
| 19. Kt-K4 | Q-Q1 |
| 20. BxKRP | Kt-K2 |
| 21. Kt-B6 ch | PxKt |
| 22. KtxKt ch | QxKt |
| 23. Q-Kt6 ch | Resigns. |

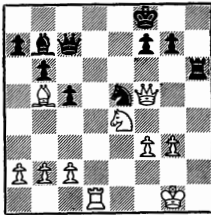
Have you renewed your subscription?

GOLDEN GATE RATING TOURNAMENT

Game No. 707, French Defense

White Black
H. King V. Bedjanian

- | | |
|-------------|--------|
| 1. P-Q4 | P-K3 |
| 2. P-K4 | P-Q4 |
| 3. B-Q3 | PxP |
| 4. BxP | Kt-KB3 |
| 5. B-Q3 | P-QKt3 |
| 6. Q-B3 | P-B3 |
| 7. Kt-K2 | B-Kt2 |
| 8. 0-0 | B-Q3 |
| 9. B-Kt5 | QKt-Q2 |
| 10. QKt-Q2 | Q-B2 |
| 11. P-KKt3 | P-KR3 |
| 12. B-B4 | P-K4 |
| 13. PxP | KtxP |
| 14. BxKt | BxB |
| 15. QKt-B4 | P-B4 |
| 16. Q-B5 | Kt-Q2 |
| 17. KtxB | KtxKt |
| 18. B-Kt5ch | K-B1 |
| 19. P-B3 | R-Q1 |
| 20. Kt-B3 | P-KR4 |
| 21. Kt-K4 | P-R5 |
| 22. QR-Q1 | RxR |
| 23. RxR | PxP |
| 24. PxP | R-R3 |



- | | |
|----------------|------|
| 25. QxKt | QxQ |
| 26. R-Q8ch | K-K2 |
| 27. R-K8 mate. | |
- A pure mate.

CENTRAL VALLEY IND. CHP.

Game No. 708, King's Indian

White Black
M. Bedford W. C. Haines

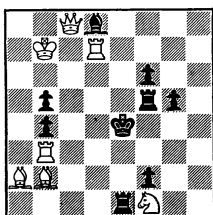
- | | |
|------------|--------|
| 1. P-QB4 | Kt-KB3 |
| 2. P-KKt3 | P-KKt3 |
| 3. B-Kt2 | B-Kt2 |
| 4. Kt-KB3 | 0-0 |
| 5. Kt-B3 | P-Q3 |
| 6. P-Q4 | QKt-Q2 |
| 7. P-K4 | P-K4 |
| 8. P-Q5 | Kt-B4 |
| 9. B-Kt5 | P-QR4 |
| 10. Kt-Q2 | P-R3 |
| 11. BxKt | QxB |
| 12. 0-0 | Q-K2 |
| 13. Kt-Kt3 | Kt-Q2 |
| 14. P-B4 | P-R5 |
| 15. Kt-B1 | PxP |
| 16. PxP | Kt-B4 |
| 17. R-K1 | P-R6 |
| 18. KKt-K2 | B-Kt5 |
| 19. Q-B2 | PxP |
| 20. R-Kt1 | BxKt |
| 21. RxB | B-Q5ch |
| 22. K-R1 | Q-B3 |
| 23. Kt-Kt5 | RxP |
| 24. KtxB | QxKt |
| 25. P-R3 | Kt-R5 |
| 26. P-K5 | Kt-B6 |
| 27. R-Q2 | QxR! |

Resigns.

TASKS: Charles W. Sheppard, the author of both this month's tasks, is a veteran from the Good Companion Days of the early twenties, who has recently resumed composing. The selections are from his "early period" and are among his personal favorites.

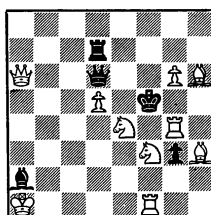
The Reporter will cooperate in publishing his collected works later this year.

TASK No. 194



Mate in two.

TASK No. 195



Mate in two.

In future issues, original compositions (previously unpublished) will be printed. Composers and prospective composers are invited to submit their works -- in either 2-move or longer direct mate problems. Again, book prizes for most complete solutions.

Mail solutions to: **THE CALIFORNIA CHESS REPORTER**
244 Kearny Street — 4th Floor
San Francisco 8, California