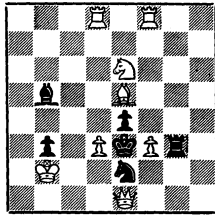


THE CALIFORNIA
CHESS REPORTER

XII 4, 1962

ADDISON
WINS STATE
CHAMPIONSHIP



FROM: 244 Kearny St. San Francisco 8

TO:

David Larson
111 Montague St.
Brooklyn 2, New York

THE CALIFORNIA CHESS REPORTER

Vol. XII, No. 4\$2 per yearDecember, 1962

THE CALIFORNIA CHESS REPORTER, 244 Kearny Street, San Francisco 8

Monthly except January, March, August, and October

Official Organ of the California State Chess Federation

Editor: Guthrie McClain

Associate Editors: Gordon S. Barrett, Los Angeles; Dr. Mark W. Eudey, Berkeley;

Neil T. Austin, Sacramento; Irving Rivise, Los Angeles

Games Editor: Robert E. Burger

Guest Annotator: Intl. Master Imre Konig

Second-class postage paid at San Francisco, California

CONTENTS

State Championship.....54	Central California League..... 59
Southern Calif. Championship..55-56	Bay Area Industrial League.....59
Northern Calif. Championship....56	Editorial 60
Sacramento Open.....57	Game of the Month 61
Mechanics' Institute 58	Games.....62-67
Castle Chess Club.....58	Reporter Tasks 68

ADDISON WINS STATE CHAMPIONSHIP

William G. Addison is the champion of California for 1963 as the result of winning the finals held in San Francisco over the Thanksgiving week end. Addison was undefeated, scoring six wins and three draws. His performance capped a year of tournament successes in San Francisco and Los Angeles chess circles. He started out by winning the Hamilton Air Force Base Open in northern California, went to southern California to win some important tournaments at Santa Monica, Hollywood and elsewhere, and decided to stay in the south where the biggest tournaments were being held.

Addison was invited to participate in the U. S. Championship in New York -- the first Californian in some time to be admitted -- and early reports have him tied for first place after four rounds. His first game was a fine win over grandmaster Sammy Reshevsky, and in the second round he drew with grandmaster Pal Benko. The Addison-Reshevsky game appears on page 65.

ADDISON WINS STATE CHAMPIONSHIP

William G. Addison of Los Angeles, formerly of San Francisco and Baton Rouge, climaxed a year of tournament successes by winning the California State Championship held in San Francisco over the Thanksgiving weekend. Addison was unbeaten, winning six games and drawing three. He drew with Irving Rivise and Walt Cunningham of the South and Peter Cleghorn of the North.

Irving Rivise, defending co-champion with Tibor Weinberger, finished in second place half a point behind Addison. Rivise lost to Weinberger and drew with Addison and Joe Mego. The strongest performance by a Northerner was Cleghorn's. He turned in a good 6-3 score to beat out Weinberger by a half a point. First prize was \$100 and custody of the permanent trophy; second prize was \$60, third \$40, and the total prize fund amounted to \$290.

The tournament was the finals of a series of eliminations. First to be seeded were last year's co-champions, Irving Rivise and Tibor Weinberger, followed by Walt Cunningham, California Open champion. Then there were qualified Leighton Allen in the Central California Chess League, Peter Cleghorn, Ralph Hurrtilen and Roy Hoppe in Northern California, and Bill Addison, Saul Yarmak, Bob Cross, and Joe Mego. (Cross entered the finals but withdrew because of illness in his family.)

The finals were set up by Isaac Kashdan and directed by Arthur B. Stamer at the Mechanics' Institute in San Francisco. The pairings for the finals were set up by "Kash" with three rounds to be played in Los Angeles and San Francisco before the two groups joined on Thanksgiving Day. This required balancing whites and blacks between North and South and minimizing the number of byes.

CALIFORNIA STATE CHAMPIONSHIP 1962

	1	2	3	4	5	6	7	8	9	10	Score
1. Addison W.	X	$\frac{1}{2}$	$\frac{1}{2}$	1	$1\frac{1}{2}$	$\frac{1}{2}$	1	1	1	1	$7\frac{1}{2}-1\frac{1}{2}$
2. Rivise I.	$\frac{1}{2}$	X	1	0	$1\frac{1}{2}$	1	1	1	1	1	$7-2$
3. Cleghorn P.	$\frac{1}{2}$	0	X	1	1	1	0	$1\frac{1}{2}$	1	1	$6-3$
4. Weinberger T.	0	1	0	X	0	1	$\frac{1}{2}$	1	1	1	$5\frac{1}{2}-3\frac{1}{2}$
5. Mego J.	0	$\frac{1}{2}$	0	1	X	$\frac{1}{2}$	$\frac{1}{2}$	$\frac{1}{2}$	1	1	$5-4$
6. Cunningham W.	$\frac{1}{2}$	0	0	0	$\frac{1}{2}$	X	1	$\frac{1}{2}$	1	1	$4\frac{1}{2}-4\frac{1}{2}$
7. Hoppe R.	0	0	1	$\frac{1}{2}$	$\frac{1}{2}$	0	X	$\frac{1}{2}$	1	1	$4\frac{1}{2}-4\frac{1}{2}$
8. Hurrtilen R.	0	0	$\frac{1}{2}$	0	0	$\frac{1}{2}$	0	X	$\frac{1}{2}$	1	$3\frac{1}{2}-5\frac{1}{2}$
9. Yarmak S.	0	0	0	0	0	0	0	$\frac{1}{2}$	X	1	$1\frac{1}{2}-7\frac{1}{2}$
10. Allen L.	0	0	0	0	0	0	0	0	0	X	$0-9$

ADDISON AND YARMAK TIE FOR FIRST IN S. CALIF. CHAMPIONSHIP

Bill Addison and Saul Yarmak went undefeated in the 1962 Southern California Championship held at the Herman Steiner club September 28-November 11. The co-champions drew with each other. In addition, Addison drew with Joe Mego and Yarmak drew with Bob Cross.

Cross finished a good third, half a point behind, and Mego became the fourth qualifier to the State finals. Cross' only loss was to Addison and Mego's was to Yarmak.

The tournament was limited to the top 15 in last year's tournament, 13 from the Expert Candidates Tournament, and a third group advanced from a series of qualifying tournaments. In addition, tournament director Gordon Barrett was empowered to approve added starters.

SOUTHERN CALIFORNIA CHAMPIONSHIP 1962

	1	2	3	4	5	6	7	8	Score
1. Addison W.	W28	W5	W11	D2	W3	D4	W10	W9	7 - 1
2. Yarmak S.	W26	W13	W17	D1	W8	W11	D3	W4	7 - 1
3. Cross R.	W15	W6	W8	W22	L1	W9*	D2	W10	6½-1½
4. Mego J.	W14	L8	W13	W7	W5	D1	W11	L2	5½-2½
5. Almgren S.	W18	L1	W6	W23	L4	L10	W14	W11	5 - 3
6. Parker S.	W24	L3	L5	W17	D14	W22	W7	D8	5 - 3
7. Kahn M.	L8	W15*	W28	L4	W24*	W21*	L6	W16	5 - 3
8. Kupersmith	W7	W4	L3	W24*	L2	W12	L9	D6	4½-3½
9. Stani K.	L21	D12	W25	W15	W23*	L3*	W8	L1	4½-3½
10. Laver R.	D20	L14	W12	W16	W19	W5	L1	L3	4½-3½
11. Gordon M.	W25	W20	L1	W14	W22	L2	L4	L5	4 - 4
12. Katzl R.	L22	D9	L10	W28	W16	L7	W15	D17	4 - 4
13. Bagley R.	W27	L2	L4	L21	W28*	L16	W25	W20	4 - 4
14. Simon K.	L4	W10	W21	L11	D6	D18	L5	D15	3½-4½
15. Homolka V.	L3	L7*	W18	L9	W17	W19	L12	D14	3½-4½
16. Hernandez B.	L23	D25	W20	L10	L12	W13	W18	L7	3½-4½
17. Benge D.	W19	L23	L2	L6	L15	W25	W26	D12	3½-4½
18. Piatigorsky	L5	L24	L15	W26	W27	D14	L16	W25	3½-4½
19. Salter S.	L17	W28	L24	W27	L10	L15	D20	D26	3½-4½
20. Sleep F.	D10	L11	L16	W25	L21	W26	D19	L13	3 - 5
21. Barlai I.	W9	L22	L14	W13	W20	L7*	- -	- -	3 - 5
22. Hufnagel F.	W12	W21	D23	L3	L11	L6	- -	- -	2½-5½
23. Quillen P.	W16	W17	D22	L5	L9*	- -	- -	- -	2½-5½

S. Cal. Championship	1	2	3	4	5	6	7	8	Score
24. Hanken J.	L6	W18	W19	L8*	L7*	- -	- -	- -	2 - 6
25. Frilling Fd.	L11	D16	L9	L20	D26	L17	L13	L18	1 - 7
26. Frilling Fk.	L2	L27	L28	L18	D25	L20	L17	D19	1 - 7
27. Conwit D.	L13	W26	L7	L19	L18	- -	- -	- -	1 - 7
28. Reina M.	L1	L19	W26	L12	L13*	- -	- -	- -	1 - 7

* Forfeit

CLEGHORN WINS NORTHERN CALIFORNIA CHAMPIONSHIP

Peter Cleghorn of Redwood City won the Northern California Championship with a fine 7-1 score, a full point ahead of Ralph Hurltlen of New Jersey. Roy Hoppe was the third qualifier into the State finals, half a point ahead of Vitaley Radaikin, Henry Gross, Sam Sloan, Robert Edberg, and John Blackstone tied for fifth.

The tournament was held at Hamilton A. F. B. November 3-4 and Mechanics' Institute November 10-11, and was directed by Charles Savery.

NORTHERN CALIFORNIA CHAMPIONSHIP 1962

	1	2	3	4	5	6	7	8	Score
1. Cleghorn P.	W11	W18	W4	D17	W5	W7	D3	W10	7 - 1
2. Hurltlen R.	W15	L13	W12	W19	L4	W5	W7	W9	6 - 2
3. Hoppe R.	W20	L4	W18	D10	W6	W9	D1	D7	5½-2½
4. Radaikin V.	W16	W3	L1	D9	W2	D10	D5	D12	5 - 3
5. Gross H.	W12	D10	W9	W6	L1	L2	D4	D8	4½-3½
6. Sloan S.	W7	D8	W10	L5	L3	W14	W12	L11	4½-3½
7. Edberg R.	L6	W15	W11	W13	W17*	L1	L2	D3	4½-3½
8. Blackstone J.	L18	D6	D15	W20	D12	D16	W11	D5	4½-3½
9. Thornally F.	W14	D17	L5	D4	W19*	L3	W15	L2	4 - 4
10. Feendit K.	W21	D5	L6	D3	W11	D4	D13	L1	4 - 4
11. McIlrath J.	L1	W14	L7	W18	L10	W21*	L8	W4	4 - 4
12. Kane G.	L5	W21	L2	W16	D8	W15	L6	D4	4 - 4
13. Eulash J.	Bye	W2	L17*	L7	L15	W20	D10	D18	4 - 4
14. Vayssie P.	L9	L11	Bye	L15	W21	L6	W18	W20	4 - 4
15. Eriggs T.	L2	L7	D8	W14	W13	L12	L9	W16	3½-4½
16. Delisle R.	L4	Bye	L19	L12	W18	D8	W20	L15	3½-4½
17. Wilcox R.	W19	D9	W13*	D1	L7*	- -	- -	- -	3 - 5
18. Goodall M.	W8	L1	L3	L11	L16	Bye	L14	D13	2½-5½
19. Shelton Dr. P.	L17	W20	W16	L2	L9*	- -	- -	- -	2 - 6
20. C'Doan L.	L3	L19	W21	L8	Bye	L13	L16	L14	2 - 6
21. McLennan M.	L10	L12	L20	Bye	L14	L11*	- -	- -	1 - 7

VINERTS WINS SACRAMENTO OPEN

Young Henry Vinerts of San Leandro won the second annual Sacramento Open, held October 27-28, $4\frac{1}{2}$ - $\frac{1}{2}$. Vinerts won a trophy and the first prize of \$75. Bill Haines, who drew with Vinerts, divided second and third prizes with M. E. Mattingly (\$37.50 each). Mattingly won the Class A trophy, Sam Sloan Class B, and 10-year-old Tommy Byrne Class C. Tournament director and promoter was William L. Rebold.

SACRAMENTO OPEN 1962

	1	2	3	4	5	Score	Solkoff
1. Harry Vinerts	W22	W23	D2	W15	W10	$4\frac{1}{2}$	
2. W. C. Haines	W19	W25	D1	W6	D4	4	$7\frac{1}{2}$
3. M. E. Mattingly	D24	D18	W26	W23*	W8	4	5
4. Erik Leitis	W14	W12	D8	D5	D2	$3\frac{1}{2}$	$9\frac{1}{2}$
5. S. Von Oettingen	W11	L8	W27	D4	W15	$3\frac{1}{2}$	$8\frac{1}{2}$
6. Frank Thornally	W16	W27	D15	L2	W12	$3\frac{1}{2}$	8
7. Jules Kalisch	W26	L15	D11	W24	W16	$3\frac{1}{2}$	$6\frac{1}{2}$
8. Anthony DiMilo	W28	W5	D4	D10	L3	3	10
9. W. F. Sprague	W21	D10	D23	D11	D14	3	$8\frac{1}{2}$
10. John Blackstone	W17	D9	W24	D8	L1	3	$8\frac{1}{2}$
11. Sam Sloan	L5	W28	D7	D9	W18	3	$8\frac{1}{2}$
12. John Voth	W18	L4	W13	W25*	L6	3	$8\frac{1}{2}$
13. Marshall McLennan	L25	W17	L12	W22	W19	3	7
14. Henry Byrne	L4	W30	D25	W27	D9	3	$6\frac{1}{2}$
15. Dr. Benjamin Gross	W29	W7	D6	L1	L5	$2\frac{1}{2}$	$10\frac{1}{2}$
16. Paul Mongan	L6	W21	W20	D18	L7	$2\frac{1}{2}$	$6\frac{1}{2}$
17. Edward Bizley	L10	L13	D21	W26	W24	$2\frac{1}{2}$	$6\frac{1}{2}$
18. Mabel Burlingame	L12	D3	W29	D16	L11	2	$8\frac{1}{2}$
19. Ward Sanders	L2	L24	W28	W20	L13	2	$6\frac{1}{2}$
20. George Teslawski	L23	W22	L16	L21	W28	2	6
21. Shelley McCarter	L9	L16	D17	D29	W27	2	6
22. Mark Holgerson	L1	L20	W30	L13	W29	2	6
23. Rex Wilcox	W20	L1	D9	L3*	- -	$1\frac{1}{2}$	10
24. Manuel Gonzales	D3	W19	L10	L7	L17	$1\frac{1}{2}$	9
25. Adrian Ford	W13	L2	D14	L12*	- -	$1\frac{1}{2}$	8
26. Laroy O'Doan	L7	D29	L3	L17	W30	$1\frac{1}{2}$	7
27. Rene Delisle	W30	L6	L5	L14	L21	1	8
28. Chas. Singleton	L8	L11	L19	W30	L20	1	7
29. Thomas Byrne	L15	D26	L18	D21	L22	1	6
30. Elmer Burlingame	L27	L14	L22	L28	L26	0	

* Forfeit

CLEGHORN WINS MECHANICS' INSTITUTE INVITATIONAL

Peter Cleghorn won the invitational held in November-December at the Mechanics' Institute by the good score of $6\frac{1}{2}-2\frac{1}{2}$, ahead of Henry Gross and Roy Hoppe, both 6-3. Cleghorn won six games, lost to Gross and Don Sutherland, and drew with Leighton Allen. First prize was \$100, second and third \$42.50 each, and fourth was \$20.

MECHANICS' INSTITUTE INVITATIONAL

	1	2	3	4	5	6	7	8	9	10	Score
1. P. Cleghorn	X	0	1	0	1	1	1	1	1	$\frac{1}{2}$	$6\frac{1}{2}-2\frac{1}{2}$
2. H. Gross	1	X	1	$\frac{1}{2}$	$\frac{1}{2}$	$\frac{1}{2}$	$\frac{1}{2}$	0	1	1	6 - 3
3. R. Hoppe	0	0	X	$\frac{1}{2}$	1	1	$\frac{1}{2}$	1	1	1	6 - 3
4. D. Sutherland	1	$\frac{1}{2}$	$\frac{1}{2}$	X	$\frac{1}{2}$	$\frac{1}{2}$	1	$\frac{1}{2}$	$\frac{1}{2}$	$\frac{1}{2}$	$5\frac{1}{2}-3\frac{1}{2}$
5. J. Kalisch	0	$\frac{1}{2}$	0	$\frac{1}{2}$	X	$\frac{1}{2}$	1	1	1	$\frac{1}{2}$	5 - 4
6. H. Bullwinkel	0	$\frac{1}{2}$	0	$\frac{1}{2}$	$\frac{1}{2}$	X	$\frac{1}{2}$	1	$\frac{1}{2}$	1	$4\frac{1}{2}-4\frac{1}{2}$
7. Lopez	0	$\frac{1}{2}$	$\frac{1}{2}$	0	0	$\frac{1}{2}$	X	1	$\frac{1}{2}$	1	4 - 5
8. K. Bendit	0	1	0	$\frac{1}{2}$	0	0	0	X	$\frac{1}{2}$	1	3 - 6
9. A. W. Bourke	0	0	0	$\frac{1}{2}$	0	$\frac{1}{2}$	$\frac{1}{2}$	$\frac{1}{2}$	X	$\frac{1}{2}$	$2\frac{1}{2}-6\frac{1}{2}$
10. L. Allen	$\frac{1}{2}$	0	0	$\frac{1}{2}$	$\frac{1}{2}$	0	0	0	$\frac{1}{2}$	X	2 - 7

GROSS WINS CASTLE CLUB TITLE

Henry Gross repeated in 1962 as Castle Chess Club titleholder. Gross had a perfect 8-0 score which relegated all the other competitors to also-rans. Last year's winner, Bob Burger, and third prize winner Val Zemitis did not enter in 1962, while Dan Belmont and Guthrie McClain dropped out before completing half the schedule.

CASTLE CHESS CLUB 1962

	1	2	3	4	5	6	7	8	9	Score
1. H. Gross	X	1	1	1	1	1	1	1	1	8 - 0
2. Dr. R. Hultgren	0	X	1	0	$\frac{1}{2}$	0	1	1	1	$4\frac{1}{2}-3\frac{1}{2}$
3. E. Lien	0	0	X	1	0	1	1	1	$\frac{1}{2}$	$4\frac{1}{2}-3\frac{1}{2}$
4. S. H. Van Gelder	0	1	0	X	1	1	0	0	1	4 - 4
5. R. P. Willson	0	$\frac{1}{2}$	1	0	X	0	$\frac{1}{2}$	1	1	4 - 4
6. C. R. Wilson	0	1	0	0	1	X	0	1	1	4 - 4
7. G. Farly	0	0	0	1	$\frac{1}{2}$	1	X	$\frac{1}{2}$	0	3 - 5
8. P. Traum	0	0	0	1	0	0	$\frac{1}{2}$	X	1	$2\frac{1}{2}-5\frac{1}{2}$
9. R. Freeman	0	0	$\frac{1}{2}$	0	0	0	1	0	X	$1\frac{1}{2}-6\frac{1}{2}$

CENTRAL CALIFORNIA CHESS LEAGUE

As the 1962-63 team match season gets under way, the opportunity presents itself to complete last year's record. (We published the first four rounds last February but there were no more reports for six months, after which time other events monopolized our pages.) We are indebted to M. A. Sanders of Manteca for the reports which made the following cross-table possible.

TEAM	1	2	3	4	5	6	7	Matches	Points
1. Salinas	X	4	4	5	4	5	5½	6 - 0	27½
2. San Jose	2	X	4	5½	5	5½	6	4½-1½	28
3. Sacramento	2	4	X	3½	2	4	6	3½-2½	21½
4. Pittsburg	1	½	2½	X	4½	3½	4	3 - 3	16
5. Oakdale	2	1	4	1½	X	2½	5	2 - 4	16
6. Stockton	1	½	2	2½	3½	X	4½	2 - 4	14
7. Modesto	½	0	0	3	1	1½	X	0 - 6	6

BAY AREA INDUSTRIAL LEAGUE

Another delayed report completes the record of the Industrial League team matches for 1961-62, which were completed last May. In this tournament of 12 teams originally, the PG&E Bishops scored 61 points to take the championship. The Bank of America equaled the Bishops' match points but had fewer game points. The San Quentin team was a close third, barely ahead of the UC Radiation Lab.

BAY AREA INDUSTRIAL LEAGUE 1961-62

	Game Points	Match Points	Total
1. PG & E Bishops	45	16	61
2. Bank of America	37	16	53
3. San Quentin	36½	15	51½
4. UC Radiation Lab	37	13	50
5. Shell Development	35	11	46
6. PG & E Knights	33½	12	45½
7. Livermore	30	11	41
8. Cal Research	26½	7	33½
9. Kaiser	25½	6	31½
10. Bay Toll	18	3	21
11. Fibreboard	6	0	6
	<u>330</u>	<u>110</u>	<u>440</u>

WHERE IS CALIFORNIA CHESS GOING? (EDITORIAL)

At the annual meeting of the California State Chess Federation there was a discussion of breaking up the federation into three or more regional federations. Since we reported the proposal several months ago in these pages, nothing concrete has materialized, but undercurrents of unrest have come to our attention. Evidently the dissatisfaction is still strong.

The most recent episode was at the State Championship in San Francisco. Criticism was leveled at northern California for not having the strongest opposition out to compete with the southerners. This was held by some of the southerners to call for holding all future state championships in Los Angeles.

In his column in the Los Angeles Times, CSCF President Isaac Kashdan tied this in with the earlier proposal to break up the federation. The fact that the Los Angeles area has more and bigger tournaments with larger cash prizes, wrote Kashdan, indicates that the State's chess community would be better off with separate federations.

We may be dense, but we fail to see how a state championship could be held exclusively in one part of California. It seems to us that it would become merely a championship of that part. We recall that many years ago Herman Steiner held championships of the California State Chess Association in Los Angeles -- with the result that scarcely anybody from the north participated.

We also fail to see how the California Open and the North-South team match would be improved by having separate federations or associations. We don't think it would help our relationship with the U.S. Chess Federation -- in fact, the national federation would be unable to grant us a state charter, according to current affiliation rules.

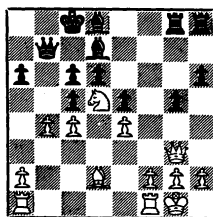
We are willing to explore new methods, however, and herewith present a few suggestions regarding statewide events. The first letter we received was from B. Rebold of Sacramento: "We would like to hold the 1963 Calif. Open in Sacramento. . . I think the resources at the Sacramento Inn are far superior to Fresno's. . . We can have the Comstock Room, an analysis room, rooms for two officials, and \$50 worth of trophies." The second letter is from H. Abel of Santa Monica, the outstanding tournament director and promoter: "I would like to run bigger and better tournaments (a la Milwaukee) and I think we have the potential if we could use our holiday week ends better. Instead of having the North-South match on that type of week end, have it just on an ordinary Saturday and Sunday. After all, it's only one game. . ."

GAME OF THE MONTH

The following sharp struggle was a key game in the California State Championship -- until Bob Cross had to drop out of the tournament at the last minute. Rather than allow such an outstanding effort to blush unseen, we present it here. The combination from move 23 is well worth seeing.

Game No. 723 Ruy Lopez

I. Rivise	R. Cross
White	Black
1. P-K4	P-K4
2. Kt-KB3	Kt-QB3
3. B-Kt5	P-QR3
4. B-R4	P-Q3
5. BxKt ch	PxB
6. P-Q4	P-B3
7. P-B4	Kt-K2
8. PxP	BPxP
9. B-Kt5	B-Q2
10. Kt-B3	Q-Kt1
11. P-QKt3	P-R3
12. B-B1	Kt-Kt3
13. Kt-KR4	KtxKt
14. Q-R5ch	P-Kt3
15. QxKt	B-K2
16. Q-Kt3	P-Kt4
17. B-Q2	Q-Kt2
18. 0-0	0-0-0
19. Kt-R4	P-B4
20. Kt-B3	QR-Kt1
21. Kt-Q5	B-Q1
22. P-Kt4	P-B3
(See Diagram)	
23. PxP	PxKt
24. QR-Kt1	Q-R2
25. P-B6	BxP
26. BPxP	B-Kt4
27. KR-Bch	K-Q2
28. B-K3	Q-Kt2



29. P-QR4 ...

Not only are Black's communications badly disrupted -- he must also return the piece.

29. ... P-Kt5

30. PxB PxP

31. R-R1 K-K1

32. R-B6 Q-Kt1

33. B-R7 Q-Kt2

34. RxP Q-KKt2

35. R-K6ch K-Q2

36. Q-QB3 Resigns

Black has managed to extricate his Queen from danger -- but now the King is defenseless. The reader may recall some of F. K. Young's treatises on the destruction of communications between the "flanks".

G A M E SCASTLE CLUB CHAMPIONSHIP1962Game No. 724 King's Indian

White Black

C. Wilson S. VanGelder

- | | | |
|-----|--------|---------|
| 1. | P-Q4 | Kt-KB3 |
| 2. | P-QB4 | P-KKt3 |
| 3. | Kt-QB3 | B-Kt2 |
| 4. | P-K4 | P-Q3 |
| 5. | B-K2 | 0-0 |
| 6. | B-Kt5 | QKt-Q2 |
| 7. | P-KR4 | P-K4 |
| 8. | P-Q5 | P-KR3 |
| 9. | B-K3 | Kt-B4 |
| 10. | B-B3 | P-B3 |
| 11. | P-QKt4 | PxP |
| 12. | BPxP | Kt4-Q2 |
| 13. | Q-Q2 | Kt-Kt3 |
| 14. | BxP | Kt-B5 |
| 15. | Q-B1 | Q-Kt3 |
| 16. | BxB | KxB |
| 17. | P-R3 | B-Kt5 |
| 18. | BxB | KtxB |
| 19. | Kt-R3 | P-B3 |
| 20. | Q-Q1 | P-B4 |
| 21. | 0-0 | QKt-K6! |
| 22. | Kt-R4 | Q-R3 |
| 23. | PxKt | KtxP |
| 24. | Q-Kt3 | KtxR |
| 25. | RxKt | PxP |
| 26. | P-Kt5 | Q-R4 |
| 27. | Kt-Kt5 | RxR |
| 28. | KxR | R-B1ch |
| 29. | K-K2 | ... |

(See Diagram

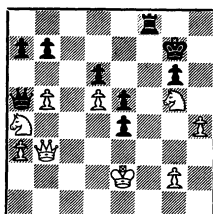
Next Column)

29. ... P-K6!

30. Kt-K6ch K-Kt1

31. KtxR ...

If QxP, QxPch, etc. or KxP, Q-K8ch, K-Q3, Q-Kt3ch, etc.



31. ... Q-Q7ch

32. K-B3 Q-B7ch

33. K-Kt4 P-K7

34. Resigns.

Game No. 725 Evan's Gambit

White Black

G. McClain R. Willson

- | | | |
|----|--------|--------|
| 1. | P-K4 | P-K4 |
| 2. | Kt-KB3 | Kt-QB3 |
| 3. | B-B4 | B-B4 |
| 4. | P-QKt4 | B-Kt3 |
| 5. | P-Q3 | Kt-B3 |
| 6. | B-KKt5 | P-KR3 |
| 7. | B-R4 | P-Q3 |
| 8. | P-KR3 | KtxKtP |
| 9. | QKt-Q2 | P-Q4 |

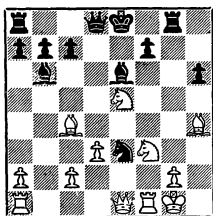
Black strangely decides to open up the game after carefully taking the gambit pawn.

10. PxP QKtxP

- 11. 0-0 B-K3
- 12. Q-K1 P-Kt4
- 13. B-KKt3 P-Kt5
- 14. PxP KtxP
- 15. KtxP R-KKt1
- 16. QKt-B3 Kt5-K6

Cf. the same move in C. Wilson --
S. Van Gelder.

- 17. PxKt KtxP
- 18. B-R4 ...



- 18. ... KtxKtPch
- 19. K-R1 KtxQ
- 20. QRxKt P-B3

If Q-B1, KtxP! and the Black King is wide open. But the text is no bargain.

- 21. BxB R-Kt4
- 22. Kt-B7 Q-K2
- 23. B-B4 B-K6
- 24. Kt/7xR RPxKt
- 25. B-B2 0-0-0
- 26. RxB ...

White is now a full rook up! Black r resigned on move 40.

Another game from the same tournament.

Game No. 726 King's Indian

	White	Black
	E. Lien	G. Farly
1.	P-Q4	P-KKt3
2.	P-QB4	B-Kt2
3.	Kt-QB3	P-Q3
4.	P-K4	Q-KtB3
5.	B-K3	P-K4
6.	P-Q5	Kt-Q5
7.	B-K2	P-QB4
8.	Q-Q2	P-KB4
9.	P-KB4	Kt-KB3
10.	BPxP	QPxP
11.	B-Kt5	P-KR3
12.	BxKt	BxB
13.	Kt-KB3	P-B5
14.	0-0-0	B-Q2
15.	P-KR3	Q-K2
16.	QR-Kt1	P-QR3
17.	K-Kt1	P-QKt4
18.	PxP	PxP
19.	KtxKt	BPxKt
20.	KtxP	0-0
21.	P-Q6	Q-K3
22.	P-QKt3	BxKt
23.	BxB	QxP
24.	B-B4ch	K-R2
25.	B-Q5	R-R2
26.	R-QB1	B-K2
27.	R-B6	Q-R6
28.	KR-Q1	P-B6
29.	PxP	RxP
30.	Q-Kt2	P-KKt4
31.	P-KR4	P-KKt5
32.	P-KR5	P-KKt6
33.	R-B2	P-K6?
34.	Q-B1	Resigns

AN HISTORIC GAME

The last time San Francisco sent a player to the U. S. Championship was 16 years ago. A. J. Fink, respected equally as a problemist and player, was in his prime and gave a good account of himself. To conquer him and go on to earn the championship, Reshevsky won the first brilliancy prize in the game shown below.

Once again, a San Franciscan (albeit current resident of Los Angeles) is playing for the U. S. title. Bill Addison, however, fared better in his game with the same, perennial Reshevsky. A sharp middle game exchange left Addison with a grip on the center and endgame prospects on the Queen-side. Rather than defend patiently, Reshevsky struck back against the White King -- only to overextend himself in the process. After the time scramble, Reshevsky conceded defeat.

Game No. 727 Ruy Lopez
(U. S. Championship 1946)
White Black
A. J. Fink S. Reshevsky

1. P-K4 P-K4
2. Kt-KB3 Kt-QB3
3. B-Kt5 P-QR3
4. B-R4 Kt-B3
5. 0-0 P-QKt4
6. B-Kt3 P-Q3

Now a familiar gambit, which White declines. After 7. Kt-Kt5, P-Q4; 8. PxP, Kt-Q5 there are wild possibilities for both sides.

7. P-B3 B-K2
8. P-Q4 0-0
9. P-KR3 PxP
10. KtxP Kt-QR4
11. B-B2 P-B4

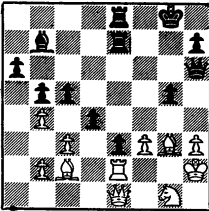
As in the following game, Black concedes a backward Queen pawn for attacking chances. He gets them.

12. Kt-B3 B-Kt2
13. R-K1 R-K1
14. B-B4 Q-Kt3
15. QKt-Q2 P-Kt3
16. R-K2 B-KB1
17. Q-KB1 Kt-R4
18. B-R2 B-R3
19. QR-K1 R-K2
20. K-R1 QR-K1
21. P-KKt4 ...

Wins the exchange, but loses a valuable pawn after Black's surprise on move 23.

21. ... Kt-KB5
22. P-Kt5 KtxR
23. PxB P-B4!
24. RxKt PxP
25. Q-K1 P-Q4
26. Kt-KKt1 Q-KB3
27. B-KKt3 P-Kt4
28. K-R2 QxRP
29. P-B3 P-K6
30. Kt-Kt3 KtxKt
31. PxKt P-Q5

32. P-Kt4 ...



32. ... P-Kt5!!

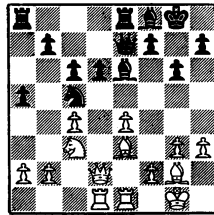
A problem-like move befits the occasion. The long diagonal is Black's long suit.

- 33. B-K4 BxB
- 34. PxP RxB
- 35. PxQP PxQP
- 36. Q-Q1 Q-K3
- 37. PxP RxP
- 38. R-Kt2 R-K2
- 39. Kt-K2 R(K2)-KKt2
- 40. Q-QKt1 P-KR4
- 41. R-Kt1 P-R5
- 42. B-B4 RxR
- 43. KtxR Q-Kt5
- 44. Q-R2ch K-R1
- 45. Resigns.

Game No. 728 King's Indian
(U. S. Championship, 1962-63)
White Black
W. Addison S. Reshevsky

- 1. P-Q4 Kt-KB3
- 2. P-QB4 P-KKt3
- 3. P-KKt3 B-Kt2
- 4. B-Kt2 0-0

- 5. Kt-QB3 P-Q3
- 6. Kt-B3 QKt-Q2
- 7. 0-0 P-K4
- 8. P-K4 P-B3
- 9. P-KR3 PxP
- 10. KtxP R-K1
- 11. B-K3 P-QR4
- 12. Q-B2 Kt-B4
- 13. QR-Q1 KKt-Q2
- 14. Kt-Kt3 Q-K2
- 15. KtxKt KtxKt
- 16. Q-Q2 B-B1
- 17. KR-K1 B-K3



- 18. Kt-Q5! PxKt
- 19. KPxP Kt-K5
- 20. BxKt BxRP
- 21. B-Q4 Q-B2
- 22. Q-B3 QR-B1
- 23. B-Q3 P-R5
- 24. RxR RxR
- 25. R-K1 RxRch
- 26. QxR Q-Q2
- 27. P-QKt4 PxP(e. p.)
- 28. PxP Q-Kt5
- 29. Q-K3 Q-K8ch
- 30. K-R2 B-Kt5
- 31. B-K4 B-R3
- 32. Q-B3 B-Q7

33. Q-Kt2	B-B8	But now P-KB3 is necessary.
34. Q-B3	B-Q7	17. ... P-Q5
35. Q-Kt2	P-KR4	18. Q-B3 QR-K1
36. Q-R3	B-R3	19. BxKt BxB
37. Q-R8ch	B-B1	20. Q-QKt3 Q-B5
38. B-K3	B-B6	21. B-Kt3 Q-Kt4
39. BxB	QxB	22. K-R2 Q-KB4
40. K-Kt1!	P-R5	23. QR-B1 K-R2?
41. B-R6	Resigns	BxKtP wins.

NORTHERN CALIFORNIA
QUALIFYING TOURNAMENT

Game No. 729 Four Knights

White	Black
H. Gross	R. Hurttlen

1. P-K4	P-K4
2. Kt-KB3	Kt-QB3
3. Kt-B3	Kt-B3
4. P-Q4	PxP
5. KtxP	B-Kt5
6. KtxKt	KtPxKt
7. B-Q3	P-Q4
8. PxP	PxP
9. 0-0	0-0
10. B-KKt5	BxKt
11. PxB	P-KR3
12. B-R4	Q-Q3
13. P-KR3	...

White is a move behind.

13. ...	R-K1
14. Q-B3	Kt-K5
15. KR-K1	B-Kt2
16. Q-K3	...

After the natural P-QB4 White must reckon with P-KKt4.

16. ...	R-K3
17. P-QB4	...

24. R-K2	Q-B4?
Or here.	
25. Q-Kt5	Q-R6
26. QR-K1	P-QB4
27. Q-Kt3	QxQ
28. BPxQ	...

Otherwise BxBP.

28. ...	B-B7
29. RxR	RxR
30. P-B3	R-R3
31. R-K7	P-Q6

The advance of this pawn will decide the issue. White cannot defend Q2 or Q1 adequately, and so tries unsuccessfully to create a diversion on the Kingside. After a few checks it is all over.

32. B-B4	P-Kt4
33. B-Q2	K-Kt3
34. R-B7	RxP
35. R-B6ch	K-R2
36. B-B3	BxB
37. R-B8	P-Q7
38. R-R8ch	K-Kt3
39. R-Kt8ch	K-B4
40. P-Kt4ch	K-K3
41. Resigns.	

CASTLE CLUB CHAMPIONSHIP 1962

Game No. 730 Sicilian Defense

White	Black
H. Gross	R. Willson

- | | | |
|----|--------|--------|
| 1. | P-K4 | P-QB4 |
| 2. | KKt-B3 | P-Q3 |
| 3. | P-Q4 | PxP |
| 4. | KtxP | KKt-B3 |
| 5. | QKt-B3 | P-KKt3 |
| 6. | B-K3 | B-Kt2 |
| 7. | P-B3 | 0-0 |
| 8. | KB-B4 | ... |

The KB, a problem, was employed by Henry Gross on B4 long before Bobby Fischer made the move popular.

- | | | |
|-----|--------|---------|
| 8. | ... | P-QR3 |
| 9. | Q-Q2 | P-QKt4 |
| 10. | B-Kt3 | B-Kt2 |
| 11. | 0-0-0 | R-K1 |
| 12. | P-KKt4 | Kt-B3 |
| 13. | P-KR4 | QKt-R4 |
| 14. | P-R5 | KtxBch |
| 15. | BPxKt | P-Kt5 |
| 16. | Kt-R4 | KtxKP |
| 17. | QxP | Q-Bch |
| 18. | K-Kt1 | Kt-Kt6 |
| 19. | KR-Kt1 | BxKt |
| 20. | RxB | Kt-K7 |
| 21. | PxP | RPxP |
| 22. | R-QB4 | Q-K3 |
| 23. | QxB | P-Q4(!) |
| 24. | R-B7 | QxB |
| 25. | R-Q1 | QR-Q1 |
| 26. | R-Q7 | QR-B |
| 27. | P-R3 | R-B8ch |
| 28. | RxR | QxRch |
| 29. | K-R2 | Q-B7? |
| 30. | RxKP | Kt-B8ch |

- | | | |
|-----|-------|----------|
| 31. | K-R1 | KtxPch |
| 32. | K-R2 | Kt-B8ch |
| 33. | K-R1 | Kt-Kt6ch |
| 34. | K-R2 | Kt-B8ch |
| 35. | K-R1 | QxKt |
| 36. | RxP | Q-Q5 |
| 37. | R-R7 | Kt-Kt6ch |
| 38. | K-R2 | Q-B3 |
| 39. | P-Kt5 | Kt-B8ch |
| 40. | K-R1 | Kt-Kt6ch |

White must offer a Knight to avert mate.

- | | | |
|-----|------|-----|
| 41. | QxKt | ... |
|-----|------|-----|

White must take the Knight to avoid a perpetual.

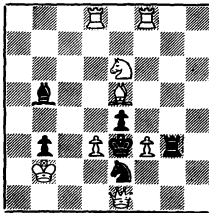
- | | | |
|-----|------|--------|
| 41. | ... | QxKtP |
| 42. | R-Q7 | Q-B8ch |
| 43. | K-R2 | Q-B5 |
| 44. | RxP | ... |

After all the fury, White settles for a won Rook and pawn ending.

- | | | |
|-----|--------|---------|
| 44. | ... | QxQch |
| 45. | KxQ | R-K6ch |
| 46. | K-B4 | RxP |
| 47. | R-Q6 | K-Kt2 |
| 48. | RxP | P-Kt4 |
| 49. | R-Q6 | P-Kt5 |
| 50. | R-Q3 | R-B8 |
| 51. | P-Kt4 | K-B3 |
| 52. | P-Kt5 | K-K4 |
| 53. | R-Q5ch | K-K5 |
| 54. | R-Kt5 | R-B5 |
| 55. | P-Kt6 | K-B6ch |
| 56. | K-Kt5 | P-Kt6 |
| 57. | P-Kt7 | R-B1 |
| 58. | P-R4 | P-Kt7 |
| 59. | P-R5 | K-B7 |
| 60. | P-R6 | R-B6 |
| 61. | K-Kt6 | R-Kt6 |
| 62. | RxR | Resigns |

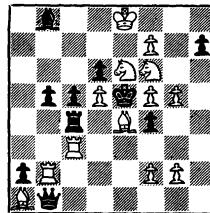
TASKS: The positions shown are further examples of the themes required in the world "championship" composing tournament organized by U. S. S. R. Each country of the 21 participants will select 2 problems in each category (there are 3 categories of 2 movers, 3 of 3 movers, etc.) If you are interested in submitting original compositions to the U. S. Committee, the editor of this page will gladly send you all particulars.

TASK No. 200



Mate in 2.

TASK No. 201



Mate in 3.

Solutions: Next Issue