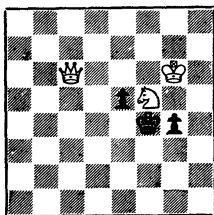


THE CALIFORNIA CHESS REPORTER

VOLUME XIII NUMBER 3



White Mates in Three

Move the pieces one file to the left, and again mate in three.

From: The California Chess Reporter
244 Kearny Street, San Francisco

To:

David Lussen
111 Montague St.
Brooklyn 2, N.Y.

THE CALIFORNIA CHESS REPORTER

Vol. XIII, No. 3

\$2 per year

November, 1963

THE CALIFORNIA CHESS REPORTER, 244 Kearny Street, San Francisco 8
Monthly except January, March, August, and October
Official Organ of the California State Chess Federation
Editor: Guthrie McClain

Associate Editors: Gordon S. Barrett, Los Angeles; Dr. Mark W. Eudey, Berkeley;

Neil T. Austin, Sacramento; Irving Rivise, Los Angeles

Games Editor: Robert E. Burger

Guest Annotator: Intl. Master Imre Konig

Second-class postage paid at San Francisco, California

CONTENTS

California State Championship... 34	Whittier Amateur Open..... 38
Calif. Women's Championship... 34	California Junior Appeal.... 39-40
Northern California Qualifying... 35	California Junior Table.... 41-42
Northern California Qualifying,	Central Calif. Team
Mill Valley..... 36	Tournament..... 43
San Gabriel Valley Open..... 37	Game of the Month..... 44
Tasks..... 48	Games..... 45-47

ADDISON REPEATS AS CALIFORNIA STATE CHAMPION

William G. Addison of Los Angeles retained his state title in November at the Herman Steiner Club, his 7-2 score being $1\frac{1}{2}$ points ahead of the runner-up, Ray Martin of Los Angeles. Addison recovered after a first-round loss to Leo Kupersmith to win six games and draw two, against Martin and John Blackstone.

Martin was second by half a point over Walt Cunningham of Arcadia and Norris Weaver of Berkeley. There were only $1\frac{1}{2}$ points between second and ninth places, as there were ties for third and fourth, fifth and sixth, and seventh, eighth and ninth places. There were ten finalists, six from the South and four from the North.

CALIFORNIA STATE CHAMPIONSHIP, NOVEMBER 1963

	1	2	3	4	5	6	7	8	9	10	Score
1. William Addison	X	$\frac{1}{2}$	1	1	$\frac{1}{2}$	1	0	1	1	1	7 - 2
2. Ray Martin	$\frac{1}{2}$	X	0	0	1	1	0	1	1	1	5 $\frac{1}{2}$ -3 $\frac{1}{2}$
3. Walt Cunningham	0	1	X	1	0	0	1	$\frac{1}{2}$	$\frac{1}{2}$	1	5 - 4
4. Norris Weaver	0	1	0	X	1	$\frac{1}{2}$	0	1	$\frac{1}{2}$	1	5 - 4
5. John Blackstone	$\frac{1}{2}$	0	1	0	X	0	1	1	0	1	4 $\frac{1}{2}$ -4 $\frac{1}{2}$
6. Roy Hoppe	0	0	1	$\frac{1}{2}$	1	X	1	0	$\frac{1}{2}$	$\frac{1}{2}$	4 $\frac{1}{2}$ -4 $\frac{1}{2}$
7. Leo Kupersmith	1	1	0	1	0	0	X	0	0	1	4 - 5
8. Stephen Matzner	0	0	$\frac{1}{2}$	0	0	1	1	X	$\frac{1}{2}$	1	4 - 5
9. Irving Rivise	0	0	$\frac{1}{2}$	$\frac{1}{2}$	1	$\frac{1}{2}$	1	$\frac{1}{2}$	X	0	4 - 5
10. Max Wilkerson	0	0	0	0	0	$\frac{1}{2}$	0	0	1	X	1 $\frac{1}{2}$ -7 $\frac{1}{2}$

The State Championship was the culmination of several qualifying tournaments, advancing eight players to the finals plus the California Champion and the Open Champion, who were seeded. The tournament was directed by Gordon Barrett.

MRS. GREGOR PIATIGORSKY WINS STATE WOMEN'S CHAMPIONSHIP

Mrs. Gregor Piatigorsky outclassed nine opponents in a revival of the California Women's Championship, held at the Herman Steiner Club simultaneously with the men's tournament. It was a five-round Swiss, and Mrs. Piatigorsky scored 5-0. Tied for second and third places $1\frac{1}{2}$ points behind were Mrs. Burlingame and Mrs. Grumette, who lost their games to Mrs. Piatigorsky and drew against each other.

CALIFORNIA STATE WOMEN'S CHAMPIONSHIP, NOVEMBER 1963

	1	2	3	4	5	Score
1. J. Piatigorsky, L. A.	W4	W6	W3	W2	W7	5 - 0
2. M. Burlingame, Phoenix	W8	W4	W5	L1	D3	3 $\frac{1}{2}$ -1 $\frac{1}{2}$
3. L. Grumette, L. A.	W10	W5	L1	W6	D2	3 $\frac{1}{2}$ -1 $\frac{1}{2}$
4. S. Sturges, L. A.	L1	L2	W8	W9	W6	3 - 2
5. Dr. P. McIntyre, San Diego	W7	L3	L2	W8	W9	3 - 2
6. W. Bettencourt, S. F.	W9	L1	W7	L3	L4	2 - 3
7. J. Culotta, S. F.	L5	W9	L6	W10*	L1	2 - 3
8. O. Higgins, Santa Barbara	L2	W10	L4	L5	W By	2 - 3
9. A. Zelman, L. A.	L6	L7	W10*	L4	L5	1 - 4
10. J. Hudson, L. A.	L3	L8	- -	- -	- -	0 - 5

* Forfeit

NORTHERN CALIFORNIA QUALIFYING TOURNAMENTS by Roy Hoppe

The three players from the San Francisco area who qualified for the State Championship were Roy Hoppe of Novato, College of Marin student, Norris Weaver of Berkeley, Minnesota state champion, and John Blackstone of Saratoga. The fourth finalist from the North was Max Wilkerson, San Francisco artist and former New Mexico state champion, who qualified in the Central Valley tournament at Sacramento.

The first two qualifying tournaments were held at the Mechanics' Institute in San Francisco and were directed by Charles Savery:

FIRST QUALIFIER, SAN FRANCISCO, OCTOBER, 1963

	1	2	3	4	5	Score
1. R. Hoppe	D8	W7	W3	W4	D2	4 - 1
2. W. Batchelder	W13	D3	D7	W8	D1	3½-1½
3. S. Sloan	W15	D2	L1	W11	W4	3½-1½
4. D. Sutherland	W12	W9	W5	L1	L3	3 - 2
5. F. Thornally	W11	W10	L4	D7	D6	3 - 2
6. M. Morris	L7	D8	W9	W13	D5	3 - 2
7. G. Kane	W6	L1	D2	D5	D8	2½-2½
8. R. L. Henry	D1	D6	W10	L2	D7	2½-2½
9. J. McIlrath	W14	L4	L6	W12	D10	2½-2½
10. K. Zangerle	W Bye	L5	L8	W Bye	D9	2½-2½
11. L. O'Doan	L5	W14	W13	L3	L12	2 - 3
12. A. McKenzie	L4	L13	W14	L9	W11	2 - 3
13. D. Sims	L2	W12	L11	L6	W Bye	2 - 3
14. P. Mongan	L9	L11	L12	L Bye	L Bye	0 - 5
15. C. Savery	L3	Withdrew				0 - 1

SECOND QUALIFIER, SAN FRANCISCO, OCTOBER, 1963

1. N. Weaver	W9	W3	W4	D2	W5	4½ - ½
2. C. Capps	W7	W8	W6	D1	D3	4 - 1
3. D. Sutherland	W5	L1	W7	W6	D2	3½-1½
4. F. Thornally	W8	D6	L1	D5	D7	2½-2½
5. A. Ford	L3	W10	W9	D4	L1	2½-2½
6. E. Bogas	W10	D4	L2	L3	W Bye	2½-2½
7. D. Sims	L2	D9	L3	W Bye	D4	2 - 3
8. J. Blackstone	L4	L2	W Bye	L Bye	L Bye	1 - 4
9. M. Eucher	L1	D7	L5	L Bye	L Bye	½ -4½
10 R. Creet	L6	L5	L Bye	L Bye	L Bye	0 - 5

THE THIRD QUALIFYING TOURNAMENT was the largest, drawing a field of 32. John Blackstone's winning score was made up of four wins, one draw, and no losses, for a total of $4\frac{1}{2}$ points and \$100 first prize.

The tournament was sponsored by the Mill Valley Chess Club and Chamber of Commerce. The tournament director was Roy Hoppe, assisted by Max Wilkerson, Leroy Post, and Mike Goodall.

THIRD QUALIFIER, MILL VALLEY, NOVEMBER, 1963

	1	2	3	4	5	Score
1. J. Blackstone	W19	W9	W10	W8	D2	$4\frac{1}{2} - \frac{1}{2}$
2. G. Kane	W21	W23	D4	W6	D1	4 - 1
3. P. Leuthold	W12	W13	L8	W11	W17	4 - 1
4. H. Gross	W17	D11	D2	W16	W9	4 - 1
5. Dr. J. K. Walters	W29	L10	W20	W18	W14	4 - 1
6. M. Morris	D7	W28	W19	L2	W16	$3\frac{1}{2} - 1\frac{1}{2}$
7. S. Von Oettingen	D6	L16	W26	W21	W22	$3\frac{1}{2} - 1\frac{1}{2}$
8. R. Thacker	W25	D18	W3	L1	D12	3 - 2
9. R. L. Henry	W26	L1	W15	W22	L4	3 - 2
10. R. Goudswaard	W24	W5	L1	L17	W20	3 - 2
11. F. Thornally	W22	D4	D18	L3	W19	3 - 2
12. R. Black	L3	D24	W27	W23	D8	3 - 2
13. A. Benson	W31	L3	W21	L14	W26	3 - 2
14. S. Sloan	D30	D20	W29	W13	L5	3 - 2
15. D. Blohm	L18	W27	L9	W30	W25	3 - 2
16. N. Wood	D20	W7	W23	L4	L6	$2\frac{1}{2} - 2\frac{1}{2}$
17. F. Harris	L4	D26	W30	W10	L3	$2\frac{1}{2} - 2\frac{1}{2}$
18. V. Radaikin	W15	D8	D11	L5	L-F	2 - 3
19. G. Wren	L1	W25	L6	W24	L11	2 - 3
20. G. C. Shroth	D16	D14	L5	W-F	L10	2 - 3
21. L. Post	L2	W30	L13	L7	W27	2 - 3
22. A. Ford	L11	W31	W28	L9	L7	2 - 3
23. B. Lainson	W27	L2	L16	L12	W30	2 - 3
24. R. Oylar	L10	D12	D31	L19	W28	2 - 3
25. A. Schulz	L8	L19	W32	W-F	L15	2 - 3
26. P. Vayssie	L9	D17	L7	W28	L13	$1\frac{1}{2} - 3\frac{1}{2}$
27. N. Walters	L23	L15	L12	W-F	L21	1 - 4
28. Mrs. J. K. Walters	W32	L2	L22	L26	L24	1 - 4
29. L. O'Doan	L5	W32	L14	L-F	L-F	1 - 4
30. L. Trottier	D14	L21	L17	L15	L23	$\frac{1}{2} - 4\frac{1}{2}$
31. K. Grover	L13	L22	D24	L-F	L-F	$\frac{1}{2} - 4\frac{1}{2}$
32. C. Grover	L28	L29	L25	L-F	L-F	0 - 5

EARNEST WINS SAN GABRIEL VALLEY OPEN

by Gordon Barrett

John Earnest and Neil Hultgren tied for first place in the October tournament held at Pasadena and took first by the slender margin of $14\frac{1}{2}$ tie-breaking points to 14. Earnest is a well-known expert in eastern chess circles, though not too active in tournaments. Usually we meet him on one of the top boards of the formidable Jet Propulsion Laboratory team at team tournament time. A. Larsen, many time winner of this event, finished in a tie for third place with C. Chrones.

SAN GABRIEL VALLEY OPEN, PASADENA, OCTOBER 1963

	1	2	3	4	5	6	Score	T-B
1. J. Earnest	W3	W17	L5	W16	W4	W6	5 - 1	$14\frac{1}{2}$
2. N. Hultgren	W11	W16	W10	W5	D6	D3	5 - 1	14
3. A. Larsen	L1	W7	W9	W11	W5	D2	$4\frac{1}{2}-1\frac{1}{2}$	$16\frac{1}{2}$
4. C. Chrones	W21	D6	W19	W15	L1	W19	$4\frac{1}{2}-1\frac{1}{2}$	11
5. S. Parker	W*	W16	W1	L2	L3	W13	4 - 2	15
6. E. Adams	W20	D4	W17	W10	D2	L1	4 - 2	$14\frac{1}{2}$
7. R. Kotz	L10	L3	W20	W14	W8	W12	4 - 2	$12\frac{1}{2}$
8. G. Hultgren	D19	L11	W22	W17	L7	W15	$3\frac{1}{2}-2\frac{1}{2}$	9
9. S. Katona	L17	W20	L3	W18	D15	W16	$3\frac{1}{2}-2\frac{1}{2}$	$8\frac{1}{2}$
10. D. Young	W7	W18	L2	L2	W19	L4	3 - 3	$14\frac{1}{2}$
11. J. Porth	L2	W8	W13	L3	L12	W18	3 - 3	$13\frac{1}{2}$
12. E. Willette	W22	L5	L15	W21	W11	L7	3 - 3	$10\frac{1}{2}$
13. K. Konjovic	L*	W22	L11	W19	W10	L5	3 - 3	$7\frac{1}{2}$
14. R. Sloan	L16	L15	W21	L7	W20	W19	3 - 3	7
15. P. Sharp	L18	W14	W12	L4	D9	L8	$2\frac{1}{2}-3\frac{1}{2}$	13
16. C. Swett	W14	L2	W18	L1	L13	L9	2 - 4	14
17. M. Carr	W9	L1	L6	L8	L18	W22	2 - 4	13
18. W. Shatford	W15	L19	L16	L9	W17	L11	2 - 4	$10\frac{1}{2}$
19. E. Nilsson	D8	W22	L4	L13	L10	L14	$1\frac{1}{2}-4\frac{1}{2}$	12
20. K. Johnson	L6	L9	L7	W22	L14	L21	1 - 5	$11\frac{1}{2}$
21. M. Armistead	L4	L13	L14	L12	L22	W20	1 - 5	$9\frac{1}{2}$
22. R. Cohan	L12	L19	L8	L20	W21	L17	1 - 5	$7\frac{1}{2}$

*Parker won from a player who withdrew after the first round.

Konjovic entered the tournament the second round.

PYE WINS WHITTIER AMATEUR OPEN

Frank Pye of Downey beat out John Postma, also from Downey, on tie-breaking points in the Whittier Amateur. The two players scored $5\frac{1}{2}-1\frac{1}{2}$ in the 7-Round Swiss and the tie-break was $21\frac{1}{2}$ to 21. Pye, a leader in the development of chess interest in Downey, has been somewhat active recently and is making a great come-back.

Pye and Postma shared 1st and 2nd prizes totaling \$52.

WHITTIER AMATEUR OPEN TOURNAMENT, SEPT-OCT 1963

	1	2	3	4	5	6	7	Score
1. Pye	W18	W10	L3	W16	W6	W4	D2	$5\frac{1}{2}-1\frac{1}{2}$
2. Postma	W21	D13	W7	W11	W4	D3	D1	$5\frac{1}{2}-1\frac{1}{2}$
3. Barrios	W7	W15	W1	L4	W5	D2	D6	5 - 2
4. King	W14	W21	W13	W3	L2	L1	W8	5 - 2
5. Sword	W8	L11	W14	W18	L3	W7	W15	5 - 2
6. Hayes	W23	W16	D11	D10	L1	W12	D3	$4\frac{1}{2}-2\frac{1}{2}$
7. Campbell	L3	W20	L2	W9	W14	L5	W12	4 - 3
8. Franzen	L5	W9	L12	W15	W16	W11*	L4	4 - 3
9. Barrios	D12	L8	W21	L7	W13	D10	W17*	4 - 3
10. Hoke	W20	L1	W19	D6	L17	D9	W16	4 - 3
11. Pease	W24	W5	D6	L2	L12	L8*	W18	$3\frac{1}{2}-3\frac{1}{2}$
12. Goddard	D9	L14	W8	W13	W11	L6	L7	$3\frac{1}{2}-3\frac{1}{2}$
13. O'Hara	W22	D2	L4	L12	L9	W21	W19	$3\frac{1}{2}-3\frac{1}{2}$
14. Thomas	L4	W12	L5	W20	L7	L15	W23	3 - 4
15. Skrypzak	W17	L3	L18*	L8	W23	W14	L5	3 - 4
16. Washburn	W19	L6	W22*	L1	L8	W23	L10	3 - 4
17. Saadi	L15	L22	ByeW	W19	W10	- -	L9	3 - 4
18. Nichols	L1	ByeW	W15*	L5	L20	D19	L11	$2\frac{1}{2}-4\frac{1}{2}$
19. Glassberg	L16	W23	L10	L17	W21	D18	L13	$2\frac{1}{2}-4\frac{1}{2}$
20. Rader	L10	L7	W23	L14	W18	- -	D21	$2\frac{1}{2}-4\frac{1}{2}$
21. Leach	L2	L4	L9	W23	L19	L13	D20	$1\frac{1}{2}-5\frac{1}{2}$
22. Hillman	L13	W17	L16*	- -	- -	- -	- -	1 - 6
23. Rawles	L6	L19	L20	L21	L15	L16	L14	0 - 7
24. Orem	L11	- -	- -	- -	- -	- -	- -	0 - 7

* Forfeit

CALIFORNIA JUNIOR CHAMPIONSHIP APPEAL - A REPORT

Last June, in the California Junior Championship, a game Roy Hoppe vs. Steve Rains was called a draw because the tournament director felt that he had not given Rains a chance to lodge a claim of threefold repetition of position during the play. Hoppe, who was ahead material when the game was stopped, appealed the verdict to the CSCF and it was put to the Tournament Committee. In order to clarify the matter and assist tournament directors in future occurrences of this kind, we now give the circumstances as sent by mail to the members of the Tournament Committee, together with their verdicts.

To our best information, Hoppe repeated the position three times during a time scramble in the last round. Rains asked the Tournament Director, Jerry Hanken, a question regarding the draw but made the claim improperly, either because of ignorance of the rules or because of extreme shortness of time on his clock (or both). Hanken told Rains to move, because he was short of time, instead of responding as if a claim of draw had been made officially.

Parenthetically, the claim of draw must be made on your own time when you are about to make the move that repeats the position for the third time. It is not sufficient, legally, to merely repeat the position and then make the claim. It is also necessary, according to the rules, to be able to support the claim by means of a reasonably accurate score sheet. However, for this tournament some of the technicalities had been waived by prior announcement, including that of the score sheet.

Soon after the incident, perhaps within a move or two but impossible to determine at this late date because neither player kept up his score, Hoppe's flag fell - and almost immediately after, Rains'. The tournament director stopped the clocks and attempted to reconstruct the game. Since the tournament was played at the Steiner Club and Hoppe was from San Francisco, there were naturally many kibitzers who desired to prove that Hoppe had lost on time. These persons were vociferous, and so hindered Hanken's task that it was very late by the time that he established that approximately 52 moves had been made. Dinner now was approaching, so Hanken awarded the win to Hoppe by adjudication.

Some time later, CSCF president and international arbiter Isaac Kashdan entered the room and was immediately requested by Mrs. Piatigorsky, club president and sponsor of the tournament, to give an

opinion about the repetition of position. Not realizing that the matter had just been ruled upon and that it was being kept alive, he replied at once: "Of course the game should be a draw. When Rains asked about a draw, he should have been told how to make the claim properly." On hearing this, tournament director Hanken reversed his decision and declared the game a draw.

Hoppe's appeal was made both to President Kashdan and to Guthrie McClain, chairman of the board of directors. Kashdan felt that he was involved, so asked that McClain put the question to the Tournament Committee.

In his appeal, Hoppe did not ask for a prize, which he might have won if he had won the game. He asked only that his rating not suffer, mainly because he was close to a Master's rating and thought he might have an opportunity to play on the U. S. Student Team in international competition, for which a rating of Master is required.

There were twelve members to be consulted, of whom two, Kashdan and Hoppe, were taken out of the voting. Of the remaining ten, there are now seven responses, and because two members have now left the State, this will be considered final.

The voting: A win for Hoppe 3 votes
 Forget the technicalities and finish the game 1
 A draw 2
 Compromise; let the matter stand but restore
 the rating points lost by Hoppe 1

The voting was not strictly along North vs. South lines: the four votes in favor of a win for Hoppe (the vote to finish the game from the adjourned position can be considered a vote for a win) were divided two and two; the two votes for a draw were from the South; and the compromise vote was from the North.

The compromise vote won out. Hoppe agreed to have the matter put to the USCF rating statistician with the request to re-figure his rating as if he had won the game. Rains' rating will not be changed. This solution may not satisfy everybody, but it seems to us a satisfactory way to settle

a difficult situation, particularly in view of the elapsed time since the tournament (June, 1963).

What lessons have we learned from this? First, international arbiter Kashdan has taken the position that the tournament director should have satisfied Rains' plea, inarticulate as it may have been. From this we may take the view that the tournament director is not a bystander nor a Supreme Court Justice aloof from the common mob - but rather an active help to the players, ready to step in when he is wanted (and perhaps at other times; we invite Mr. Kashdan to suggest when he should butt in and when he should butt out!) We also learn that when you waive the necessity to keep a score sheet, or any other details called for in the laws of chess, you may get into trouble. Several members of the Tournament Committee doubted the legality of this.

In our account of this tournament (Vol. XIII, #1) we left out the cross table. For the record, here it is unchanged:

CALIF. JR. CHP, 1963	1	2	3	4	5	6	Score
1. J. Blackstone	D43	W31	W32	W16	W3	W4	5½ - ½
2. W. Cunningham	W28	D20	D18	W14	W7	W11	5 - 1
3. R. Freeman	W29	W14	W35	D6	L1	W18	4½ - 1½
4. R. Bliss	W44	W26	D5	W24	W6	L1	4½ - 1½
5. R. Hoppe	W10	W36	D4	D8	D12	D13	4 - 2
6. F. Thornally	W33	W15	W24	D3	L4	D12	4 - 2
7. R. Laver	W42	W12	D8	W17	L2	D10	4 - 2
8. C. Marin	W30	W22	D7	D5	D18	D9	4 - 2
9. D. Sutherland	W13	L24	W36	W22	D10	D8	4 - 2
10. W. Maillard	L5	W47	W15	W21	D9	D7	4 - 2
11. T. Dorsch	L17	W40	W33	W25	W16	L2	4 - 2
12. A. Sacks	W50	L7	W26	W35	D5	D6	4 - 2
13. S. Rains	L9	W50*	D21	W44	W17	D5	4 - 2
14. B. Allen	W46	L3	W42	L2	W39	W27	4 - 2
15. S. Gruen	W38	L6	L10	W42	W36	W24	4 - 2
16. K. Pfeiffer	W21	D18	W19	L1	L11	W33	3½ - 2½
17. P. Coffino	W11	D19	W20	L7	L13	W31	3½ - 2½
18. E. O'Connor	W37	D16	D2	W32	D8	L3	3½ - 2½
19. G. Kane	W27	D17	L16	D23	W31	D22	3½ - 2½
20. T. Jester	W41	D2	L17	L31	W38	W35*	3½ - 2½
21. L. Portillo	L16	W38	D13	L10	W46	W32	3½ - 2½

Calif. Jr. Chp. 1963	1	2	3	4	5	6	Score
22. J. Levin	W48	L8	W45	L9	W29	D19	3½-2½
23. C. Stern	L26	D34	W49*	D19	W25	D28	3½-2½
24. D. Rogosin	W34	W9	L6	L4	W37	L15	3 - 3
25. P. Rhee	W39*	L35	W30	L11	L23	W37	3 - 3
26. B. Samuelson	W23	L4	L12	L39	W43	W41	3 - 3
27. F. Alonso	L19	D37	D43	W45	W35*	L14	3 - 3
28. A. Wicher	L2	D46	L37	W47	W40	D23	3 - 3
29. A. Cesare	L3	W39	D46	D37	L22	W36	3 - 3
30. J. Stremel	L8	W41	L25	L36	W45	W39	3 - 3
31. V. Homolka	D49	L1	W34	W20	L19	L17	2½-3½
32. L. Harter	W45	W49	L1	L18	D33	L21	2½-3½
33. T. Ellis	L6	W48	L11	W43	D32	L16	2½-3½
34. M. Nosanov	L24	D23	L31	L40	W42	W46	2½-3½
35. S. Mann	W39	W25	L3	L12	L27*	L20*	2 - 4
36. M. Carr	W47	L5	L9	W30	L15	L29	2 - 4
37. M. Quinlivan	L18	D27	W28	D29	L24	L25	2 - 4
38. M. Urban	L15	L21	W41	D46	L20	D40	2 - 4
39. A. Benson	L35	L29	W50*	W26	L14	L30	2 - 4
40. Bernstein	L25*	L11	D47	W34	L28	D38	2 - 4
41. G. Elias	L20	L30	L38	W48	W44	L26	2 - 4
42. B. Gain	L7	W44	L14	L15	L34	D43	1½-4½
43. D. Mortz	D1	L45	D27	L33	L26	D42	1½-4½
44. D. Argall	L4	L42	W48	L13	L41	D45	1½-4½
45. W. Darrow	L32	W43	L22	L27	L30	D44	1½-4½
46. J. Levy	L14	D28	D29	D38	L21	L34	1½-4½
47. G. Jean	L36	L10	D40	L28	L48	W By	1½-4½
48. G. Lahr	L22	L33	L44	L41	W47	- -	1 - 5
49. P. Carton	D31	L32	L23*	- -	- -	- -	½ -5½
50. Lau	L12	L13*	L39†	- -	- -	- -	0 - 6

* Forfeit

Statement of Ownership: THE CALIFORNIA CHESS REPORTER	
Published.....	8 times yearly. At... San Francisco, California.
Entered as second-class matter at San Francisco, California.	
Publisher.....	Calif. State Chess Federation, 244 Kearny Street, S. F.
Editor.....	W. G. McClain, 244 Kearny Street, San Francisco.
Business Manager..	Ralph Hultgren, 244 Kearny Street, San Francisco.
Owned entirely by..	California State Chess Federation, 244 Kearny Street, San Francisco. (Ownership equally divided among all members of the Federation.)

CENTRAL CALIFORNIA TEAM TOURNAMENT

The 1963-64 team tournament got underway on October 20 at Stockton:

ROUND 1, October 20

<u>Sacramento</u>	4	<u>Salinas</u>	2
1. Haines W	$\frac{1}{2}$	Leidner M	$\frac{1}{2}$
2. Sprague W	0	Bedford M	1
3. DiMilo T	$\frac{1}{2}$	Oakes G	$\frac{1}{2}$
4. Wolfson L	1	Clark F	0
5. Hunting L	1	Nielson M	0
6. Saunders W	1	Nichols O	0

<u>Davis</u>	2 $\frac{1}{2}$	<u>San Jose</u>	3 $\frac{1}{2}$
1. VonOettingen	$\frac{1}{2}$	Blackstone J	$\frac{1}{2}$
2. Leitis E	0	Mueller B	1
3. Layfield T	1	Adams W	0
4. MacCaskey E	$\frac{1}{2}$	Furnier R	$\frac{1}{2}$
5. Schmid R	$\frac{1}{2}$	Chako	$\frac{1}{2}$
6. Knutson	0	Daugherty L	1

<u>Stockton</u>	4	<u>Oakdale</u>	2
1. Daid-Malig Dr.	0	Smith CJ	1
2. Mattingly M	1	Kimball F	0
3. Christian R	1	Duncanson H	0
4. Rebold W	0	Fernandez H	1
5. Sanders M	1	Smith W	0
6. Saxon AC	1	Smith Mrs. V	0

<u>Pittsburg</u>	5	<u>Ione</u>	1
1. Turner L	1	Hubbard P	0
2. Trenberth R	1	Meeks J	0
3. Guzman R	1	Lincecum P	0
4. Weinberg F	1	Jacino J	0
5. Olvera F	0	Reuther L	1
6. Garcia G	1	Forfeit	0

ROUND 2, November 17

<u>Sacramento</u>	6	<u>Pittsburg</u>	0
1. Leuthold P	1	Turner R	0
2. Janushowsky	1	Loera A	0
3. Bender O	1	Trenberth R	0
4. Sprague B	1	Guzman R	0
5. Wolfson L	1	Bybee W	0
6. DiMilo T	1	Garcia G	0

<u>Salinas</u>	4 $\frac{1}{2}$	<u>Oakdale</u>	1 $\frac{1}{2}$
1. Bedford M	1	Smith CJ	0
2. Leidner M	$\frac{1}{2}$	Duncanson H	$\frac{1}{2}$
3. Oakes G	1	Smith W	0
4. Hart R	1	Smith V	0
5. Nielson M	0	Sutherland J	1
6. Sewell W	1	Forfeit	0

<u>San Jose</u>	6	<u>Stockton</u>	0
1. Blackstone J	1	Mattingly M	0
2. Adams WT	1	David-Malig	0
3. Mueller B	1	Rebold W	0
4. Fournier R	1	Sanders MA	0
5. Barlow JH	1	Mattingly P	0
6. Stark W	1	Saxon AC	0

<u>Davis</u>	4	<u>Ione</u>	2
1. Leitis E	1	Meeks J	0
2. Layfield T	0	Hubbard P	1
3. McCaskey E	1	Forfeit	0
4. Schmid R	1	Reuther L	0
5. Savitsky M	0	Jacino J	1
6. Knutson A	1	Black D	0

GAME OF THE MONTH

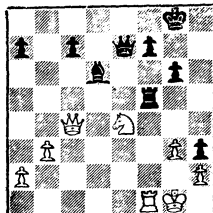
The first round of the California State Championship produced a surprising upset when Leo Kuppersmith beat the obvious favorite, Bill Addison. The game is no fluke. Black hung on to the extra pawn, and then converted his advantage into a final mating attack. It is to Addison's credit that he bounced back from this disastrous start to win the tournament in a walk.

CALIF. STATE CHAMPIONSHIP 1963Game No. 762 Alekhine's Defense

White Black
W. Addison L. Kupersmith

- | | | |
|-----|--------|--------|
| 1. | P-K4 | Kt-KB3 |
| 2. | P-K5 | Kt-Q4 |
| 3. | P-Q4 | P-Q3 |
| 4. | Kt-KB3 | B-Kt5 |
| 5. | B-K2 | P-K3 |
| 6. | 0-0 | Kt-QB3 |
| 7. | P-B4 | KKt-K2 |
| 8. | PxP | QxP |
| 9. | B-K3 | Kt-B4 |
| 10. | P-B5 | Q-Q2 |
| 11. | Kt-B3 | BxKt |
| 12. | BxB | KKtxP |
| 13. | BxKKt | KtxB |
| 14. | BxP | R-QKt1 |
| 15. | BxKt | QxB |
| 17. | Q-Q4 | R-Kt5 |
| 18. | Q-Q2 | B-Q3 |
| 19. | Kt-K2 | 0-0 |
| 20. | QR-B1 | Q-K5 |
| 21. | Kt-Kt3 | Q-R5 |
| 22. | Q-K2 | KR-Kt1 |
| 23. | P-Kt3 | P-KKt3 |
| 24. | Q-R6 | Q-Q5 |
| 25. | KR-Q1 | Q-Kt3 |
| 26. | Q-K2 | R-KR5 |
| 27. | R-B4 | RxR |

- | | | |
|-----|-------|-------|
| 28. | QxR | Q-R4 |
| 29. | Q-K2 | R-Kt4 |
| 30. | Kt-K4 | R-K4 |
| 31. | P-B4 | R-B4 |
| 32. | P-Kt3 | P-K4 |
| 33. | PxP | QxP |
| 34. | Q-Q3 | P-KR4 |
| 35. | K-Kt2 | P-R5 |
| 36. | Q-Q4 | Q-K3 |
| 37. | Q-B4 | P-R6+ |
| 38. | K-Kt1 | Q-K4 |
| 39. | Q-Q4 | Q-K3 |
| 40. | Q-B4 | Q-K2 |
| 41. | R-KB1 | |



- | | | |
|-----|----------|-------|
| 41. | ... | B-B4+ |
| 42. | KtxB | Q-K6+ |
| 43. | K-R1 | Q-Q7 |
| 44. | R-KKt1 | R-B7 |
| 45. | Resigns. | |

THE CALIFORNIA CHESS REPORTER
G A M E S

45

NORTHERN CALIF. QUALIFIER 1963

Game No. 763 English

	White	Black
	R. Hoppe	G. Kane
1.	P-QB4	Kt-KB3
2.	Kt-KB3	P-K3
3.	P-KKt3	P-Q4
4.	B-Kt2	B-K2
5.	0-0	0-0
6.	P-Kt3	P-B4
7.	PxP	KtxP
8.	B-Kt2	QKt-B3
9.	Kt-B3	KtxKt
10.	BxKt	Kt-Q5
11.	R-B1	Q-Kt3
12.	P-K3	Kt-Kt4
13.	B-Kt2	B-Q2
14.	Kt-K5	KR-Q1
15.	Q-B3	Kt-Q3
16.	B-QR3	P-B3
17.	BxP	Q-R3
18.	KtxB	RxKt
19.	R-B2	QR-Q1
20.	KR-QB1	Kt-B1
21.	B-B1	Q-R4
22.	B-B4	RxP
23.	BxPch	K-B1
24.	Q-R5	Resigns.

Game No. 764 Danish Gambit

	White	Black
	D. Sutherland	J. McIlrath
1.	P-K4	P-K4
2.	Kt-KB3	Kt-QB3
3.	P-Q4	PxP
4.	P-QB3	PxP
5.	B-QB4	B-Kt5

6.	0-0	P-Q3
7.	Q-Kt3	Q-K2
8.	B-QKt5	B-R4
9.	BxKtch	PxB
10.	Q-R4	R-Kt1
11.	KtxP	B-Kt3
12.	R-K1	B-KKt5
13.	B-KKt5	Q-K3
14.	Kt-Q4	BxKt
15.	QxB	P-KB3
16.	QxRP	RxKtP
17.	B-B4	Q-Q2
18.	P-KB3	B-K3
19.	QR-Q1	Q-B1
20.	QR-Kt1	RxR
21.	RxR	Q-Q1
22.	R-Kt7	Kt-K2
23.	RxP	Kt-QB1
24.	Q-QKt7	B-Q2
25.	P-QR4	Kt-K2
26.	P-R5	B-B1
27.	Q-R7	K-B2
28.	RxP	Resigns.

CENTRAL CALIF. OPEN

(5th round upset prize)

Game No. 765 French

	White	Black
	B. Eaton	R. Oyler
1.	P-K4	P-K3
2.	P-Q4	P-Q4
3.	Kt-QB3	PxP
4.	KtxP	Kt-Q2
5.	B-QB4	KKt-B3
6.	Kt-Kt3	P-B4
7.	Kt-B3	PxP
8.	KtxP	B-K2
9.	0-0	0-0

10. R-K1 Q-B2
11. BxP PxB
12. KtxP Q-B3
13. KtxR BxKt
14. B-B4 P-QKt3
15. P-KR3 B-Kt2
16. P-KB3 B-B4ch
17. K-R1 Kt-B1
18. Kt-B5 Kt-Kt3
19. B-Kt3 Kt-R4
20. B-R2 Q-B3
21. Q-Q7 B-B3
22. Q-QB7 BxP
23. PxB QxKt
24. Q-B6 R-KB1
25. R-KB1 QxRP
26. Q-Q5ch K-R1
27. Q-Kt5 B-Q3
28. R-B2 RxP
29. R-Kt2 Kt-Kt6ch
30. RxKt BxR
31. Q-Q8ch Kt-B1
32. Q-Q2 R-B7
33. Resigns.

SOUTHERN CALIF. CHAMPIONSHIP
1961

Game No. 766 French Defense

White	Black
K. Forrest	F. Pye

White avoids castling too long, and when he does, he's in a mating net.

1. P-K4 P-K3
2. P-Q4 P-Q4
3. Kt-QB3 B-Kt5
4. P-K5 P-B4
5. P-QR5 BxKtch

6. PxB Kt-K2
7. P-KKt4! ? QKt-B3
8. Kt-K2 Kt-Kt3
9. Kt-Kt3 P-KB3
10. Kt-R5 0-0
11. PxP PxP
12. B-R6 R-B2
13. Q-Q2 BPxQP
14. PxP P-K4
15. P-Kt5 KtxQP
16. KtxPeh RxKt
17. B-Kt2 Kt-R5
18. 0-0-0 R-B3!
19. BxPch QxB
20. Q-Kt4 RxPeh
and mate next move

CALIF. STATE CHAMPIONSHIP 1963

<u>Game No. 768</u>	<u>English</u>
White	Black
R. Hoppe	W. Addison

1. P-QB4 P-KKt3
2. P-KKt3 B-Kt2
3. B-Kt2 P-Q3
4. Kt-QB3 Kt-QB3
5. P-K3 P-K4
6. KKt-K2 KKt-K2
7. P-Q4 PxP
8. KtxP KtxKt
9. PxB 0-0
10. 0-0 Kt-B4
11. Kt-K2 R-K1
12. Q-Q3 P-B3
13. B-Q2 Q-Kt3
14. B-QB3 Q-R3
15. Kt-B4 B-Q2
16. P-Q5 P-B4
17. BxB KtxB

18.	B-R3	BxB	43.	P-R4	K-K3
19.	KtxB	R-K2	44.	R-R7	R-K4ch
20.	P-R3	QR-K1	45.	K-Q3	P-B3
21.	Q-B3	Kt-B4	46.	R-KKt'	K-B4
22.	Kt-B4	Kt-Q5	47.	P-B3	R-K8
23.	K-Kt2	P-QKt4	48.	P-Kt4ch	PxP
24.	PxP	Q-Kt2	49.	PxPch	KxP
25.	P-QKt4	KtxP	50.	RxPch	K-B4
26.	Q-B6	PxP	51.	R-Kt2	R-KR8
27.	PxP	R-K4	52.	R-B2ch	K-K4
28.	KR-Q1	R-B4	53.	R-K2ch	K-Q4
29.	Q-Kt2	QR-K4	54.	R-KB2	R-R6ch
30.	QR-B1	Kt-R2	55.	K-Q2	K-K3
31.	Q-B3	KtxP	56.	R-K2ch	K-B2
32.	Q-B8ch	QxQ	57.	R-K4	P-B4
33.	RxQch	K-Kt2	58.	R-R4	K-K3
34.	KtxKt	RxKt	59.	K-K2	K-K4
35.	RxR	RxR	60.	K-B2	P-B5
36.	R-QR8	R-QKt4	61.	R-R5ch	P-Q4
37.	RxP	RxP	62.	Resigns.	
38.	R-Q7	R-Q5			
39.	K-B3	K-B3			
40.	K-K3	R-Q8			
41.	K-K2	R-Q4			
42.	K-K3	P-R4			

H E N R Y K I N G

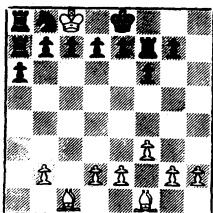
Henry King, a familiar face to Northern California players for many years, died recently after a long illness.

Henry was a member of the Golden Gate Chess Club of San Francisco, and played regularly in the league matches. His occupation made him a natural for the lettering of tournament lists and displays for such events as the North-South match.

Henry is also well-known to players across the country as the inventor of the "King-Board" -- a limp plastic board that rolls into a container. He silk-screened these boards in his own shop and supplied them with the player's name hand-lettered on the border.

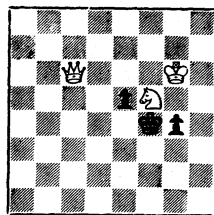
TASKS:

TASK No. 213



V. Korolikhov and A. Troitzki
 First Prize, PROBLEM, 1957
 Stipulation: Is the position legal?
 In other words, is it possible for
 the White King to get where he is
 without stalemate? How?
 Note that, first of all, one Black
 Rook is the result of a promotion
 which required several captures
 of White men.

TASK No. 214



L. H. Jokisch
 Nashville American, 1888
 Mate in three*

"In form and feature, face and limb,
 I grew so like my brother,
 That folks got taking me for him,
 And each one for the other."

-Henry Sambrooke Leigh

*As suggested by B. G. Laws, move
 all the pieces one file to the left,
 and again it is Mate in Three.

This month we present problems slightly out of the ordinary. The "retro-gate analysis" problem is simple, and worthy of the study. We guarantee you it won't help you to play the middle game.

No. 214 is from the Dutch book mentioned last time, "Citaat-Problemen", which includes 96 problems of specific interest, with appropriate quotations. Dr. Niemeijer, the publisher, combines a good deal of humor with some outstanding selections of all types of problems. It need not be mentioned that the moving of the pieces to the left produces a different solution; unlike many such "twins", this problem has a solution which is also entirely different in all variations.

(The Niemeijer book mentioned above, as well as his "Goethart Problems", "Loshinsky & Hartong Problems", "Hannemann Problems", and "Scaevvaeria" (another diverse collection) are available from the Reporter for \$1.50 each. They were received on exchange for "Sheppard Two-Movers", published by the Reporter last month at the same price.)