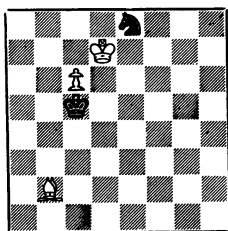


THE CALIFORNIA CHESS REPORTER

JULY - AUGUST, 1967

VOLUME XVII, NUMBER 1



White to move and win.

FROM: 244 Kearny Street, 4th Floor
San Francisco, Calif. 94108

TO:

CENTRAL CALIFORNIA OPEN AND QUALIFYING TOURNAMENT:

Date: October 20-21-22, 1967 (5-round Swiss)
 Place: YWCA, 1122 - 17th Street, Sacramento, California
 Entry Fee: \$10 and membership in USCF and CSCF
 Registration to: O. Bender, 2549 Rio De Oro Way, Sacramento, CA 95826
 Registration closes at 8:00 pm, October 20th.

Entrants who live outside Sacramento area and who do not wish to come to Sacramento for the first round should register early. It may be possible to arrange first round game with another entrant from your area.

Schedule: Round 1: 8 pm Friday; Round 2: 9 am Saturday;
 Round 3: 3 pm Saturday; Round 4: 10 am Sunday;
 Round 5: 4 pm Sunday. (40 moves in 2 hours)

RIVERSIDE OPEN: October 20-21-22, 1967 (\$150 first guaranteed)

FIGHT OF THE BUMBLER B: Limited to those with ratings under 1800, plus unrated (not eligible for trophy or first 3 cash prizes) players.

Date: October 28-29, 1967 (5-round Swiss)
 Place: Monterey Youth Center, El Estero Park, Monterey, Calif.
 Entry Fee: \$10.50 if received by October 27th; otherwise \$12.50, plus USCF dues
 Director: Gordon Barrett
 Entries and Information: Monterey Peninsula Chess Club, PO Box 261, Monterey
 (Sponsored by the Monterey Recreation Department)

SANTA BARBARA OPEN: November 13-14-15, 1967
 (Prize Fund: \$1000 guaranteed)

THE CALIFORNIA CHESS REPORTER

Vol. XVII, No. 1

\$2 per year

July-August, 1967

THE CALIFORNIA CHESS REPORTER, 244 Kearny Street, San Francisco 94108

Published Bi-monthly

Official Organ of the California State Chess Federation

Editor: Guthrie McClain

Associate Editors: Gordon S. Barrett, Los Angeles; Dr. Mark W. Eudey, Atherton;
Neil T. Austin, Sacramento; Irving Rivise, Los Angeles

Games Editor: Robert E. Burger

Guest Annotator: Intl. Master Imre Konig

Reporter Tasks: Robert E. Burger

Second-class postage paid at San Francisco, California

CONTENTS

Pacific Southwest Open	2	Mechanics' Institute Invitational . .	11
Stamer Memorial Tournament . . .	2-3	So. Calif. Experts Candidates . .	12-15
Southern California Open	4-6	City Terrace Open	16
California Junior Championship .	7-8	Game of the Month	16-19
Ernest Shields Open	9-11	Tasks	20

SUMMER TOURNAMENTS ESTABLISH REGIONAL CHAMPIONS

William Stewart won the California Junior Championship held at the Herman Steiner club June 23-25. The field of 66 set a record. On the Fourth of July week end two of California's most important tournaments were held: At Santa Monica, Robion Kirby and Tibor Weinberger tied for first place in the Pacific Southwest Open. There were 129 contestants. At San Francisco, Denis Fritzingler and Earl Pruner tied for first place in the Arthur B. Stamer Memorial Tournament. There were 64 contestants.

Another big event at Santa Monica—122 players—was the Southern California Open. The winner was a newcomer to California chess, Laszlo Binet. Bakersfield's entry into the big time, the first Ernest Shields Open with 88 players was won by another newcomer, Walter Browne. The largest tournament of all, at least in the geographical sense, was the Southern California Experts Candidates Tournament, an event with seven preliminary sections totaling 99 contestants and held all over; the finals, held at the El Segundo club, crowned Martin Rubin as champion.

To wind up the reporting period, we record the winners of two small but important events: Frank Thornally won the Mechanics' Institute Invitational and Gordon Barrett won the City Terrace Open.

KIRBY, WEINBERGER TIE FOR FIRST AT PACIFIC SOUTHWEST OPEN

Robion Kirby of UCLA and Tibor Weinberger of Santa Monica tied for first place in the Pacific Southwest Open, held over the July 4th week end at Santa Monica. Kirby defeated Dr. Anthony Saidy in the last round and Weinberger won from Ray Martin. The winners scored $6\frac{1}{2}-\frac{1}{2}$. Saidy, who also was knocked out of the American Open last Fall by Kirby, tied for third with Jerry Hanken and young David Anderson at 6-1. Andy Kempner was tournament director. We regret that the cross-table of this 129-player tournament is not available.

FRITZINGER, PRUNER TIE FOR FIRST IN STAMER MEMORIAL TOURNAMENT

Dennis Fritzinger and Earl Pruner divided first prize in the annual Arthur B. Stamer Memorial, held at the Mechanics' Institute in San Francisco over the July 4th week end. Both players won five games and drew two on their way to 6-1 scores. There was a five-way tie for third place between Max Burkett, John Jaffray, David Peizer, Eugene Krestini and Edward Syrett. There were 64 contestants and Mike Goodall directed. The cross-table:

ARTHUR B. STAMER MEMORIAL, JULY 1-4, 1967

	1	2	3	4	5	6	7	Score
1. D. Fritzinger	W36	W42	W15	D5	W4	W11	D3	6 - 1
2. E. Pruner	W29	W38	W10	D3	D9	W22	W8	6 - 1
3. M. Burkett	W51	W31	W37	D2	D8	W9	D1	$5\frac{1}{2}-1\frac{1}{2}$
4. J. Jaffray	W63	W18	D8	W32	L1	W36	W12	$5\frac{1}{2}-1\frac{1}{2}$
5. D. Peizer	W57	W44	W12	D1	L11	W32	W13	$5\frac{1}{2}-1\frac{1}{2}$
6. E. Krestini	D39	W43	W30	L8	W25	W16	W18	$5\frac{1}{2}-1\frac{1}{2}$
7. E. Syrett	L20	W63	W26	W49	D12	W14	W11	$5\frac{1}{2}-1\frac{1}{2}$
8. G. Ramirez	W52	W16	D4	W6	D3	W18	L2	5 - 2
9. H. Gross	W41	W26	D14	W17	D2	L3	W22*	5 - 2
10. I. Pohl	W54	W40	L2	W37	L18	W26	W33	5 - 2
11. S. von Oettingen	W28	D24	W33	W21	W5	L1	L7	$4\frac{1}{2}-2\frac{1}{2}$
12. Z. Baroudi	W47	W49	L5	W31	D7	W17	L4	$4\frac{1}{2}-2\frac{1}{2}$
13. C. Capps	D49	W47	W24	W14	L22	W27	L5	$4\frac{1}{2}-2\frac{1}{2}$
14. M. Wilkerson	W48	W19	D9	L13	W29	L7	W41	$4\frac{1}{2}-2\frac{1}{2}$
15. H. Noland	W23	W50	L1	L18	W41	D19	W30	$4\frac{1}{2}-2\frac{1}{2}$
16. J. Hurt	W46	L8	D51	W39	W34	L6	W29	$4\frac{1}{2}-2\frac{1}{2}$
17. T. Lee	W56	D62	W20	L9	W30	L12	W31	$4\frac{1}{2}-2\frac{1}{2}$
18. R. Menaster	W61	L4	W44	W15	W10	L8	L6	4 - 3
19. D. Thompson	W25	L14	D29	W24	D42	D15	D27	4 - 3
20. F. Berry	W7	D21	L17	L27	W28	D37	W38	4 - 3
21. B. Menas	W35	D20	W36	L11	L27	W49	D24	4 - 3
22. S. Sloan	L40	W35	W28	W23	W13	L2	L9*	4 - 3
23. J. Vegailla	L15	W64	W38	L22	D31	D25	W36	4 - 3
24. R. Mitchell	W58	D11	L13	L19	W39	W56	D21	4 - 3

Arthur B. Stamer Memorial (Continued)

	1	2	3	4	5	6	7	Score
25. A. Eydal	L19	W48	D34	W50	L6	D23	W43	4 - 3
26. S. Markman	BYE	L9	L7	W45	W56	L10	W46	4 - 3
27. J. Delamarre	D59	W57	L32	W20	W21	L13	D19	4 - 3
28. V. Bedjanian	L11	W53	L22	W58	L20	W45	W37	4 - 3
29. R. Hammie	L2	W45	D19	W48	L14	W42	L16	3½-3½
30. J. Kolkey	W34	D32	L6	W40	L17	W50	L15	3½-3½
31. F. Harris	W60	L3	W62	L12	D23	W34	L17	3½-3½
32. R. Wilcox	W55	D30	W27	L4	W33	L5	-	3½-3½
33. A. DiMilo	D62	W59	L11	W54	L32	W35	L10	3½-3½
34. J. Hope	L30	W55	D25	W52	L16	L31	W49	3½-3½
35. L. O'Doan	L21	L22	W53	W44	D37	L33	W50	3½-3½
36. H. Edelstein	L1	W46	L21	W38	W43	L4	L23	3 - 4
37. P. Grey	W43	W39	L3	L10	D35	D20	L28	3 - 4
38. D. Obstfeld	W45	L2	L23	L36	W53	W54	L20	3 - 4
39. D. Olmsted	D6	L37	W60	L16	L24	D40	W59	3 - 4
40. D. Ackerman	W22	L10	D42	L30	L49	D39	W61	3 - 4
41. H. Winter	L9	D60	D61	W62	L15	W44	L14	3 - 4
42. R. Baker	W53	L1	D40	W51	D19	L29	-	3 - 4
43. C. Fotias	L37	L6	W55	W57	L36	W52	L25	3 - 4
44. R. Swanson	W64	L5	L18	L35	W48	L41	W57	3 - 4
45. E. Ipsen	W38	L29	W63	L26	W58	L28	W55	3 - 4
46. J. Fosaaen	L16	L36	L54	W47	W61	W55	L26	3 - 4
47. M. Mattingly	L12	L13	L48	L46	W63*	W61	W53	3 - 4
48. M. Weinstein	L14	L25	W47	L29	L44	W62*	W52*	3 - 4
49. P. Nielsen	D13	L12	W59	L7	W40	L21	L34	2½-4½
50. E. Zinke	BYE	L15	D52	L25	W51	L30	L35	2½-4½
51. F. Crofut	L3	W58	D16	L42	L50	W60*	-	2½-4½
52. J. Mathis	L8	W56	D50	L34	D54	L43	L48*	2 - 5
53. J. Bush	L42	L28	L35	W63	L38	W57	L47	2 - 5
54. P. Schure	L10	D61	W46	L33	D52	L38	L58	2 - 5
55. M. Gazse	L32	L34	L43	W59	W62*	L46	L45	2 - 5
56. A. Gullmes	L17	L52	BYE	W61	L26	L24	-	2 - 5
57. J. Cornwell	L5	L27	D58	L43	W59	L53	L44*	1½-5½
58. S. Bailey	L24	L51	D57	L28	L45	L59	W54	1½-5½
59. D. Mitchell	D27	L33	L49	L55	L57	W58	L39	1½-5½
60. J. Mikl	L31	D41	L39	BYE	-	L51*	-	1½-5½
61. M. Terry	L18	D54	D41	L56	L46	L47	L30	1 - 6
62. J. Monori	D33	D17	L31	L41	L55*	L48*	-	1 - 6
63. C. Stewart	L4	L7	L45	L53	L47*	-	-	0 - 7
64. D. Lynn	L44	L23	-	-	-	-	-	0 - 7

BINET SWEEPS THE SOUTHERN CALIFORNIA OPEN TOURNAMENT

Laszlo Binet of Venezuela won the Southern California Open with a perfect 6-0 score, defeating Bob Jacobs in the final round in a game which went 118 moves. Carl Pilnick was second, $5\frac{1}{2}$ - $\frac{1}{2}$ and Jacobs tied for third with Jerry Hanken, Charles Henin, Frank Thornally and Jose Tossas. There were 122 contestants and Andy Kempner directed.

SOUTHERN CALIFORNIA OEPN, SANTA MONICA AUGUST 18-20, 1967

	1	2	3	4	5	6	Score
1. L. Binet	W74	W23	W40	W4	W12	W3	6 - 0
2. C. Pilnick	W65	W24	D8	W27	W35	W9	$5\frac{1}{2}$ - $\frac{1}{2}$
3. R. Jacobs	W55	W45	W29	W5	W16	L1	5 - 1
4. F. Thornally	W57	W66	W25	L1	W55	W30	5 - 1
5. J. Hanken	W76	W60	W21	L3	W67	W19	5 - 1
6. C. Henin	W97	W48	W10	L16	W25	W29	5 - 1
7. J. Tossas	W72	W42	W83	L12	W50	W46	5 - 1
8. W. Bragg	W77	W114	D2	W46	D15	D11	$4\frac{1}{2}$ - $\frac{1}{2}$
9. G. Gean	D74	W59	W75	W91	W22	L2	$4\frac{1}{2}$ - $\frac{1}{2}$
10. M. Goodall	W70	W108	L6	W64	W40	D12	$4\frac{1}{2}$ - $\frac{1}{2}$
11. R. Kirby	W99	W13	D41	D19	W34	D8	$4\frac{1}{2}$ - $\frac{1}{2}$
12. J. Loftsson	W73	W37	W30	W7	L1	D10	$4\frac{1}{2}$ - $\frac{1}{2}$
13. B. Pollard	W118	L11	W114	D56	W52	W55	$4\frac{1}{2}$ - $\frac{1}{2}$
14. V. Pupols	W101	L79	W111	W54	D21	W35	$4\frac{1}{2}$ - $\frac{1}{2}$
15. M. Siero	W26	W32	W18	D22	D8	D16	$4\frac{1}{2}$ - $\frac{1}{2}$
16. A. Spiller	W56	W44	W53	W6	L3	D15	$4\frac{1}{2}$ - $\frac{1}{2}$
17. J. Tarjan	W36	D83	L35	W95	W60	W44	$4\frac{1}{2}$ - $\frac{1}{2}$
18. E. Wicher	W105	W54	L15	D44	W83	W42	$4\frac{1}{2}$ - $\frac{1}{2}$
19. D. Anderson	W110	D43	W90	D11	W20	L5	4 - 2
20. W. Cornwall	W115	L52	W36	W47	L19	W50	4 - 2
21. J. Davidian	W122	W38	L5	D14	W23	D27	4 - 2
22. P. Eberlein	W81	W67	W79	D15	L9	D26	4 - 2
23. L. Enequist	W95	L1	W97	L21	W74	W64	4 - 2
24. F. Gamboa	W61	L2	W76	L39	W97	W53	4 - 2
25. P. Heinrich	W113	W52	L4	W53	L6	W51	4 - 2
26. J. Kolkey	L15	W87	W98	D38	W43	D22	4 - 2
27. R. Reynolds	W109	D75	W43	L2	W56	D21	4 - 2
28. G. Rubin	W85	D50	L46	D49	W99	W65	4 - 2
29. K. Stani	W104	W47	L3	W68	W39	L6	4 - 2
30. W. Stewart	W63	W106	L12	W65	W51	L4	4 - 2
31. A. Vinock	L47	W104	L65	W103	W91	W71	4 - 2
32. Dr. S. Weinbaum	W87	L15	L55	W72	W62	W54	4 - 2
33. C. Yergin	L74	W119*	L91	W76	W58	W67	4 - 2
34. T. Bullockus	W86	D46	D50	W105	L11	D36	$3\frac{1}{2}$ - $2\frac{1}{2}$
35. A. Coles	W88	D90	W17	W41	L2	L14	$3\frac{1}{2}$ - $2\frac{1}{2}$

Southern California Open (Continued)

	1	2	3	4	5	6	Score
36. J. Evanns	L17	W58	L20	W98	W79	D34	3½-2½
37. M. Fabian	W100	L12	L47	W104	W105	D40	3½-2½
38. R. Harshberger	W103	L21	W99	D26	L44	W82	3½-2½
39. J. Heffernan	L66	W81	W71	W24	L29	D48	3½-2½
40. J. Hoggatt	W62	W94	L1	W79	L10	D37	3½-2½
41. A. Kanamori	W119	W91	D11	L35	L42	W78	3½-2½
42. R. Klein	W96	L7	D106	W92	W41	L18	3½-2½
43. N. Lessing	W102	D19	L27	W78	L26	W84	3½-2½
44. H. Rogosin	W89	L16	W100	D18	W38	L17	3½-2½
45. S. Rubin	W49	L3	W103	L50	D82	W81	3½-2½
46. S. Telingator	W68	D34	W28	L8	W90*	L7	3½-2½
47. D. Welsh	W31	L29	W37	L20	D66	W83	3½-2½
48. A. Wichter	W98	L6	L56	W87	W102	D39	3½-2½
49. R. Adolfo	L45	D73	W84	D28	L64	W93	3 - 3
50. B. Antman	W71	D28	D34	W45	L7	L20	3 - 3
51. R. Arthur	D59	D69	W62	W66	L30	L25	3 - 3
52. D. Blohm	W82	L25	D78	W59	L13	D60	3 - 3
53. M. Bramson	W64	W20	L16	L25	W100	L24	3 - 3
54. M. Burlingame	W112	L18	W113	L14	W63	L32	3 - 3
55. B. Collins	L3	W118	W32	W94	L4	L13	3 - 3
56. K. Commons	L16	W116	W48	D13	L27	D66	3 - 3
57. G. Fennel	L4	L88	D61	W118	D75	W100	3 - 3
58. R. Glass	L83	L36	W119	W114*	L33	W105	3 - 3
59. R. Heisler	D51	L9	W107	L52	D61	W92	3 - 3
60. N. Kurtz	W120	L5	D88	W75	L17	D52	3 - 3
61. A. Lubin	L24	L97	D57	W73	D59	W99	3 - 3
62. S. Luckhardt	L40	W80	L51	W70	L32	W87	3 - 3
63. L. Peterson	L30	L64	W122	W111	L54	W97	3 - 3
64. P. Razien	L53	W63	W96	L10	W49	L33	3 - 3
65. K. Smith	L2	W107	W31	L30	W69	L28	3 - 3
66. L. Stevens	W39	L4	W77	L51	D47	D56	3 - 3
67. M. Thomson	W78	L22	W92	W88	L5	L33	3 - 3
68. M. Tupas	L46	W85	W108*	L29	L71	W104	3 - 3
69. E. Villasenor	D107	D51	L105	W77	L65	W103	3 - 3
70. B. Weiner	L10	L71	W112	L62	W101	W91	3 - 3
71. W. Wilson	L50	W70	L39	W85	W68	L31	3 - 3
72. G. Wood	L7	L96	W110	L32	W109	W89	3 - 3
73. J. Batchelder	L12	D49	L95	L61	W85	W106	2½-3½
74. H. Cillers	D9	L1	W33	D90	L23	D80	2½-3½
75. M. Cotter	W111	D27	L9	L60	D57	D76	2½-3½
76. R. Engler	L5	W120	L24	L33	W86	D75	2½-3½
77. J. Kent	L8	W89	L66	L69	W113*	D79	2½-3½
78. R. Mann	L67	W115	D52	L43	W106	L41	2½-3½

Southern California Open (Continued)

	1	2	3	4	5	6	Score
79. R. Neustaedter	W92	W14	L22	L40	L36	D77	2½-3½
80. L. Nezhni	L94	L62	L82	W112	W114	D74	2½-3½
81. D. Nystrom	L22	L39	D118	W116	W95	L45	2½-3½
82. M. Schlosser	L52	L98*	W80	W93	D45	L38	2½-3½
83. J. Varis	W58	D17	L7	W106	L18	L47	2½-3½
84. D. Walker	L106	D95	L49	W107	W88	L43	2½-3½
85. R. Allen	L29	L68	W89	L71	L73	W110	2 - 4
86. D. Bragg	L34	-	L101	W120	L76	W108*	2 - 4
87. P. Bronson	L32	L26	W116	L48	W108	L62	2 - 4
88. W. Cramond	L35	W57	D60	L67	L84	D95	2 - 4
89. B. Donner	L44	L77	L85	W110	W96	L72	2 - 4
90. R. Fritzinger	W93	D35	L19	D74	L46*	-	2 - 4
91. G. Cribble	W116	L41	W33	L9	L31	L70	2 - 4
92. S. Gusner	L79	W121	L67	L42	W111*	L59	2 - 4
93. O. Higgins	L90	L100	W109	L82	W115	L49	2 - 4
94. G. Hunnex	W80	L40	W102	L55	-	-	2 - 4
95. A. Jones	L23	D84	W73	L17	L81	D88	2 - 4
96. E. Levy	L42	W72	L64	-	L89	W109	2 - 4
97. M. Long	L6	W61	W23	W117	L24	L63	2 - 4
98. J. Marshall	L48	W82*	L26	L36	L104	W115	2 - 4
99. P. McCarthy	L11	W117	L38	W115	L28	L61	2 - 4
100. E. McMullen	L37	W93	L44	W101	L53	L57	2 - 4
101. D. Rader	L14	L113	W86	L100	L70	W117	2 - 4
102. R. Reuben	L43	W110	L94	W108	L48	-	2 - 4
103. M. Thomas	L38	W122	L45	L31	W117	L69	2 - 4
104. T. Twaiten	L29	L31	W120	L37	W98	L68	2 - 4
105. R. Usan	L18	W112	W69	L34	L37	L58	2 - 4
106. J. Kitsianis	W84	L30	D42	L83	L78	L73	1½-4½
107. B. Murdock	D69	L65	L59	L84	W112	L116	1½-4½
108. W. Beattie	W121	L10	L68*	L102	L87	L86*	1½-4½
109. A. Bullockus	L27	L111	L93	W122	L72	L96	1 - 5
110. C. Finley	L19	L102	L72	L89	W122*	L85	1 - 5
111. D. Fram	L75	W109	L14	L63	L92*	-	1 - 5
112. J. Hughes	L54	L105	L70	L80	L107	BYE	1 - 5
113. K. Leonhardt	L25	W101	L54	-	-	-	1 - 5
114. G. Lundberg	W117	L8	L13	L58*	L80	-	1 - 5
115. G. Michaels	L20	L78	W121	L99	L93	L98	1 - 5
116. A. Patsch	L91	L56	L87	L81	W120*	W107	2 - 4
117. R. Wood	L114	L99	BYE	L97	W103	L101	1 - 5
118. D. Starr	L13	L55	D81	L57	-	-	½-5½
119. J. Dix	L41	L33*	L58	-	-	-	0 - 6
120. B. Greene	L60	L76	L104	L86	-	-	0 - 6
121. R. Weinhold	L108	L92	L115	-	-	-	0 - 6
122. N. Volk	L21	L103	L63	L109	-	-	0 - 6

STEWART CALIFORNIA JUNIOR CHAMPION

William Stewart of Huntington Beach won the junior championship in a six-round Swiss held at the Herman Steiner Club June 23-25, 1967. Bill won five games and drew one (vs. Robert Bliss of Manhattan Beach) for a $5\frac{1}{2}-\frac{1}{2}$ score. The decisive game probably was his win over 1966 champion Jim Tarjan of Sherman Oaks in the fourth round. Bliss and Tarjan tied for second with 5-1 scores.

There was a record field of 66 contestants in the tournament. The director was CSCF president Isaac Kashdan. The Piatigorsky Foundation sponsored the event. The cross-table:

CALIFORNIA JUNIOR CHAMPIONSHIP, JUNE 23-24-25, 1967

	1	2	3	4	5	6	Score
1. W. Stewart	W42	W32	W23	W2	D3	W11	$5\frac{1}{2}-\frac{1}{2}$
2. J. Tarjan	W36	W17	W20	L1	W16	W10	5 - 1
3. R. Bliss	W35	W25	W5	D10	D1	W9	5 - 1
4. L. Stevens	W21	W7	W14	D9	D10	D5	$4\frac{1}{2}-1\frac{1}{2}$
5. A. Kanamori	W22	D15	W60	W26	D11	D4	$4\frac{1}{2}-1\frac{1}{2}$
6. D. Blohm	W34	L20	W31	W53	D7	W23	$4\frac{1}{2}-1\frac{1}{2}$
7. P. Heinrich	W65	L4	W35	W30	D6	W20	$4\frac{1}{2}-1\frac{1}{2}$
8. A. Gojich	W66	W54	L3	W44	D9	W24	$4\frac{1}{2}-1\frac{1}{2}$
9. A. Vinock	W44	W16	W30	D4	D8	L3	4 - 2
10. N. Miller	W61	W31	W29	D3	D4	L2	4 - 2
11. G. Gean	W55	D26	W41	W15	D5	L1	4 - 2
12. T. Beckman	W45	L23	D32	W22	W26	D15	4 - 2
13. M. Fabian	L23	W45	D22	W59	D29	W32	4 - 2
14. J. Levin	W50	W63	L4	D36	D32	W29	4 - 2
15. S. Jurado	W48	D5	W24	L11	W36	D12	4 - 2
16. M. Klass	W19	L9	W64	W54	L2	W31	4 - 2
17. J. Davidian	W18	L2	L54	W49	W45	W27	4 - 2
18. E. Townsend	L17	D42	D27	W61	W30	W33	4 - 2
19. J. Kolkey	L16	W51	L44	W37	D38	W41	$3\frac{1}{2}-2\frac{1}{2}$
20. R. Neustaedter	W62	W6	L2	D23	W41	L7	$3\frac{1}{2}-2\frac{1}{2}$
21. R. Smith	L4	W66	D57	W34	L24	W43	$3\frac{1}{2}-2\frac{1}{2}$
22. L. Beavers	L5	W48	D13	L12	W60*	W40	$3\frac{1}{2}-2\frac{1}{2}$
23. B. Antman	W13	W12	L1	D20	W40	L6	$3\frac{1}{2}-2\frac{1}{2}$
24. S. Telingator	D29	W27	L15	W46	W21	L8	$3\frac{1}{2}-2\frac{1}{2}$
25. R. J. Heisler	W47	L3	L36	L45	W49	W46	3 - 3
26. D. Terry	W59	D11	W43	L5	L12	D36	3 - 3
27. G. Fennell	D38	L24	D18	W64	W44	L17	3 - 3
28. D. Ackerman	D60	L43	L46	W42	W59*	D38	3 - 3
29. W. Alexander	D24	W38	L10	W57	D13	L14	3 - 3
30. K. Commons	W49	W52	L9	L7	L18	W45	3 - 3

California Junior Championship (Continued)

	1	2	3	4	5	6	Score
31. H. Einberg	W61	L10	L6	W50	W39	L16	3 - 3
32. J. Kent	W56	L1	D12	W60	D14	L13	3 - 3
33. P. Grad	W39	-	-	W63	W47	L18	3 - 3
34. W. Singleton	L6	W49	D52	L21	D46	W47	3 - 3
35. A. C. Jones	L3	W47	L7	L39	W63*	W50	3 - 3
36. R. Melniker	L2	W56	W25	D14	L15	D26	3 - 3
37. D. Grabhorn	L52	-	W66*	L19	W48	W55	3 - 3
38. M. Cotter	D27	L29	W42	D52	D19	D28	3 - 3
39. T. W. Rook	L33	L40	BYE	W35	L31	W44	3 - 3
40. D. Bernstein	L63	W39	D59	W43	L23	L22	2½-3½
41. R. Engler	D43	W46	L11	W58	L21	L19	2½-3½
42. K. Ito	L1	D18	L38	L28	W51	W57	2½-3½
43. P. Flick	D41	W28	L26	L40	W57	L21	2½-3½
44. S. Gusner	L9	W62	W19	L8	L27	L39	2 - 4
45. B. Murdock	L12	L13	W48	W25	L17	L30	2 - 4
46. E. Bohanan	D58	L41	W28	L24	D34	L25	2 - 4
47. Miss B. Heinrich	L25	L35	W51	W55	L33	L34	2 - 4
48. Miss L. Gilbert	L15	L22	L45	W62	L37	W56	2 - 4
49. Miss N. Jones	L30	L34	W65	L17	L25	W62	2 - 4
50. G. Tuttle	L14	BYE	L58	L31	W61	L35	2 - 4
51. D. Goodwin	L54	L19	L47	W66*	L42	W61	2 - 4
52. G. Pickler	W37	L30	D34	D38	-	-	2 - 4
53. R. Rosenberg	W57	-	W63	L6	-	-	2 - 4
54. L. Neuton	W51	L8	W17	L16	-	-	2 - 4
55. M. Barthelow	L11	L59	W62	L47	D56	L37	1½-4½
56. E. Arbucci	L32	L36	L61	W65	D55	L48	1½-4½
57. J. Hoggatt	L53	W61	D21	L29	L43	L42	1½-4½
58. D. Flaherty	D46	L60*	W50	L41	-	-	1½-4½
59. K. Leonhardt	L26	W55	D40	L13	L28*	-	1½-4½
60. D. Taliaferro	D28	W58*	L5	L32	L22*	-	1½-4½
61. L. Peterson	L10	L57	W56	L18	L50	L51	1 - 5
62. R. Wood	L20	L44	L55	L48	W65*	L49	1 - 5
63. T. Armbruster	W40	L14	L53	L33	L35*	-	1 - 5
64. G. Fitzgerald	L31	W65	L16	L27	-	-	1 - 5
65. W. Mohawk	L7	L64	L49	L56	L62*	-	0 - 6
66. W. Beatty	L8	L21	L37*	L51*	-	-	0 - 6

BROWNE WINS FIRST ERNEST SHIELDS OPEN AT BAKERSFIELD

Walter Browne, 1966 U.S. junior champion who is visiting California won a big tournament July 21-23 when he edged out a bunch of masters in the Ernest Shields Open. Browne's decisive moment came in the third round when he defeated top-ranking player Dr. Anthony Saidy—a game that required three sessions and was not finished until late the next day. First prize was worth \$500.

The competition was fierce, and no less than seven players tied for second place with 5-1 scores. Second prize, \$200, third prize, \$100 and the \$100 class prizes were largely divided among the seven who tied. The field of 88 contestants set a record for Bakersfield. Much credit goes to Ernie Shields who promoted the tournament and to Gordon S. Barrett who directed it. There was a last-minute change from the El Cid Motel to the Hill House, but the tournament was held up only 20 minutes. The cross-table:

ERNEST SHIELDS OPEN, BAKERSFIELD JULY 21-23, 1967

	1	2	3	4	5	6	Score
1. W. Browne	W63	W6	W4	D2	W11	W17	5½-½
2. J. Blackstone	W35	W23	W15	D1	D17	W14	5 - 1
3. I. Rivise	W40	W46	W32	D10	W7	D5	5 - 1
4. Dr. T. Saidy	W33	W20	L1	W48	W32	W9	5 - 1
5. T. Weinberger	W38	W14	D18	W28	W25	D3	5 - 1
6. D. Anderson	W88	L1	W59	W15	W13	W19	5 - 1
7. L. T. Binet	W51	W21	W37	W27	L3	W18	5 - 1
8. F. Thornally	W8	L39	W62	W22	W29	W16	5 - 1
9. D. Fritzinger	W67	W12	D26	W42	W10	L4	4½-1½
10. J. Tossas	W73	W43	W13	D3	L9	W25	4½-1½
11. R. Jacobs	W78	W49	W42	D26	L1	W28	4½-1½
12. W. Stewart	W81	L9	W65	D38	W26	W41	4½-1½
13. J. Schmitt	W61	W30	L10	W39	L6	W51	4 - 2
14. P. Perillo	W44	L5	W69	W41	W37	L2	4 - 2
15. H. Mayer	W56	W57	L2	L6	W47	W40	4 - 2
16. B. Antman	L30	W40	W64	W36	W27	L8	4 - 2
17. R. Martin	D58	W83	W84	W35	D2	L1	4 - 2
18. A. Spiller	W72	W62	D5	D25	W31	L7	4 - 2
19. C. Henin	L62	W73	W45	W30	W20	L6	4 - 2
20. J. Tarjan	W75	L4	W53	W63	L19	W50	4 - 2
21. R. Bliss	W77	L7	W67	L29	W38	W45	4 - 2
22. D. Cotten	W82	L27	W87	L8	W59	W42	4 - 2
23. K. Stani	W70	L2	L63	W71	W67	W37	4 - 2
24. A. Kanamori	W68	L31	L55	W66	W62	W39	4 - 2
25. J. Hanken	W29	W64	W31	D18	L5	L10	3½-2½

Ernest Shields Open (Continued)

	1	2	3	4	5	6	Score
26. P. Smith	W59	W87	D9	D11	L12	D29	3½-2½
27. P. Quillen	W53	W22	W39	L7	L16	D34	3½-2½
28. M. Burkett	W69	W47	D48	L5	W33	L11	3½-2½
29. J. Davidian	L25	W82	W52	W21	L8	D26	3½-2½
30. R. Gish	W16	L13	W43	L19	D56	W55	3½-2½
31. K. Warner	W79	W24	L25	W84*	L18	D32	3½-2½
32. H. Noland	W65	W58	L3	W55	L4	D31	3½-2½
33. R. Neustaedter	L4	D75	W44	W69	L28	W60	3½-2½
34. L. Enequist	L57	W68	L41	W43	W63	D27	3½-2½
35. R. Shepard	L2	D74	W83	L17	W75	W56	3½-2½
36. M. Goodall	L43	W77	W66	L16	D55	W58	3½-2½
37. D. Blohm	W45	W84	L7	W46	L14	L23	3 - 3
38. D. Baker	L5	D44	W74	D12	L21	W68	3 - 3
39. T. Beckman	W76	W8	L27	L13	W60	L24	3 - 3
40. M. Gazse	L3	W16	W86	W54	W49	L15	3 - 3
41. W. Alexander	W60	W42	W34	L14	W48	L12	3 - 3
42. S. Hohensee	W80	W41	L11	L9	W64	L22	3 - 3
43. A. Jones	W36	L10	L30	L34	W78	W64	3 - 3
44. K. Ogden	L14	D38	L33	W53	D61	W62	3 - 3
45. D. Lucero	L37	W70	L19	W85	W52	L21	3 - 3
46. R. Reynolds	W86	L3	W57	L37	L50	W66	3 - 3
47. G. Herlick	W85	L28	D50	D49	L15	W70	3 - 3
48. D. Balfe	D66	W80	D28	L4	L41	W73	3 - 3
49. A. Vinock	W71	L11	D56	D47	L40	W69	3 - 3
50. E. Shields	L64	W72	D47	D56	W46	L20	3 - 3
51. S. Salter	L7	L65	W70	W76	W57	L13	3 - 3
52. W. Bragg	D83	D66	L29	W65	L45	W72	3 - 3
53. G. Olsson	L27	W76	L20	L44	W81	W75	3 - 3
54. C. Yergin	L84	L63	W77	L40	W65	W67	3 - 3
55. R. Klein	L8	W86	W24	L32	D36	L30	2½-3½
56. F. Brock	L15	W88	D49	D50	D30	L35	2½-3½
57. R. Allen	W34	L15	L46	W78	L51	D61	2½-3½
58. S. Vigneau	D17	L32	L68	W74	W71	L36	2½-3½
59. O. Higgins	L26	D60	L6	W79	L22	W87	2½-3½
60. R. Harshbarger	L41	D59	W75	W61	L39	L33	2½-3½
61. J. Zizda	L13	D71	W79	L60	D44	D57	2½-3½
62. D. Wildschultz	W19	L18	L8	W87	L24	L44	2 - 4
63. A. Stobbe	L1	W54	W23	L20	L34	-	2 - 4
64. R. E. Baker	W50	L25	L16	W68	L42	L43	2 - 4
65. T. Devine	L32	W51	L12	L52	L54	W86*	2 - 4
66. F. Berry	D48	D52	L36	L24	W85	L46	2 - 4
67. L. Hoke	L9	W81	L21	W82	L23	L54	2 - 4
68. C. Fotias	L24	L34	W58	L64	W82	L38	2 - 4

Ernest Shields Open (Continued)

	1	2	3	4	5	6	Score
69. R. Heisler	L28	W85	L14	L33	W87	L49	2 - 4
70. V. Saporito	L23	L45	L51	BYE	W79	L47	2 - 4
71. T. Morris	L49	D61	D78	L23	L58	W82	2 - 4
72. D. Choate	L18	L50	L76	W77	W86	L52	2 - 4
73. R. G. Clark	L10	L19	L82	W81	W76	L48	2 - 4
74. A. Rackett	L87*	D35	L38	L58	D83	W85	2 - 4
75. H. Vaughan	L20	D33	L60	W83	L35	L53	1½-4½
76. D. Hinrichsen	L39	L53	W72	L51	L73	D78	1½-4½
77. R. E. Whittaker	L21	L36	L54	L72	D80	W81	1½-4½
78. S. Skrypzak	L11	D79	D71	L57	L43	D76	1½-4½
79. G. Wood	L31	D78	L61	L59	L70	BYE	1½-4½
80. D. Rader	L42	L48	L85	L86	D77	W83	1½-4½
81. D. Bragg	L12	L67	BYE	L73	L53	L77	1 - 5
82. H. Mason	L22	L29	W73	L67	L68	L71	1 - 5
83. K. Forrest	D52	D17	L35	L75	D74	L80	1 - 5
84. G. Gean	W54	L37	L17	L31*	-	-	1 - 5
85. M. Leon	L47	L69	W80	L45	L66	L74	1 - 5
86. W. Beattie	L46	L55	L40	W80	L72	L65*	1 - 5
87. R. Wood	W74*	L26	L22	L62	L69	L59	1 - 5
88. L. Simon	L6	L56*	-	-	-	-	0 - 6

THORNALLY WINNER IN MECHANICS' INSTITUTE INVITATIONAL

Frank Thornally won first prize (\$120) in the annual invitational held at the Mechanics' Institute in May and June by a narrow margin over Jim Schmitt and Dave Blohm. Second place was worth \$60, third \$50 and there were three players tied for fourth who each won \$33. The scores:

	1	2	3	4	5	6	7	8	9	10	11	Score
1. F. Thornally	X	½	½	½	½	½	1	1	½	1	1	7 - 3
2. J. Schmitt	½	X	0	½	0	1	½	1	1	1	1	6½ - 3½
3. D. Blohm	½	1	X	1	½	0	0	1	1	1	0	6 - 4
4. R. Currie	½	½	0	X	½	½	½	0	1	1	1	5½ - 4½
5. E. Osburn	½	1	½	½	X	0	0	1	1	0	1	5½ - 4½
6. A. Wang	½	0	1	½	1	X	1	1	0	½	0	5½ - 4½
7. J. Blackstone	0	½	1	½	1	0	X	1	0	0	1	5 - 5
8. R. Hoppe	0	0	0	1	0	0	0	X	1	1	1	4 - 6
9. H. Gross	½	0	0	0	0	1	1	0	X	½	½	3½ - 6½
10. R. Wilcox	0	0	0	0	1	½	1	0	½	X	½	3½ - 6½
11. N. Weaver	F	F	1	F	F	1	0	F	½	½	X	3 - 7

RUBIN FIRST, RUBIN SECOND IN EXPERTS CANDIDATES TOURNAMENT

Martin Rubin of the San Fernando Valley won the finals of the Experts Candidates tournament of the Southern California Chess League, held at the El Segundo Club in June. Rubin won three games and drew two in the finals, and he had a carryover of 5-0 from the San Fernando Valley section played before for a fine 9-1 total score.

Sid Rubin of Los Angeles finished second with 8-2, composed of two scores of 4-1. The finals were a culmination of seven sections held previous to the finals.

EXPERT CANDIDATES FINALS, EL SEGUNDO 1967

	6	7	8	9	10	Prev.	Score
1. M. Rubin	W14	D4	W6	D2	W5	5 - 0	9 - 1
2. S. Rubin	W12	W14	W3	D1	D4	4 - 1	8 - 2
3. R. Taylor	L6	W23	L2	W12	W8	4½ - ½	7½ - 2½
4. I. Besen	W7	D1	L5	W6	D2	4 - 1	7 - 3
5. D. Wildschutz	W13	W15	W4	D8	L1	3½ - 1½	7 - 3
6. L. Corbin	W3	W9	L1	L4	W11	4 - 1	7 - 3
7. R. Gish	L4	L8	W18	W15	D9	4 - 1	6½ - 3½
8. L. Nezhni	W19	W7	W9	D5	L3	3 - 2	6½ - 3½
9. M. Cook	W11	L6	L8	W14*	D7	4 - 1	6½ - 3½
10. H. Shipin	D15	L13	W16	W21	W12	3 - 2	6½ - 3½
11. D. Cotten	L9	L12	W21	W13	L6	4 - 1	6 - 4
12. K. Ogden	L2	W11	D14	L3	L10	4 - 1	5½ - 4½
13. T. Devine	L5	W10	L15	L11	W17	3½ - 1½	5½ - 4½
14. J. Tindall	L1	L2	D12	L9*	-	5 - 0	5½ - 4½
15. M. Carroll	D10	L5	W13	L7	-	3½ - 1½	5 - 5
16. T. Mishler	D18	D17	L10	D22	W21	2½ - 2½	5 - 5
17. G. Olsson	L23	D16	W20	W18	L13	2½ - 2½	5 - 5
18. C. Larson	D16	W20	L7	L17	W22	2½ - 2½	5 - 5
19. G. Boehm	L8	L21	D22	D20	W24	3 - 2	5 - 5
20. H. Gandara	W22	L18	L17	D19	BYE	2 - 3	4½ - 5½
21. T. Streeter	W24	W19	L11	L10	L16	2 - 3	4 - 6
22. V. Lopez	L20	BYE	D19	D16	L18	2 - 3	4 - 6
23. B. Hernandez	W17	L3	-	-	-	3 - 2	4 - 6
24. Dr. B. Glazer	L21	-	-	BYE	L19	2 - 3	3 - 7

The sections were held all over southern California, from El Segundo to San Bernardino. While the size varied from six players to 28, all played five rounds. The points scored in the sections were just as important as those scored in the finals. In general, three from each section qualified for the finals, although in some cases as many as six moved up, and in one section there were none.

EXPERT CANDIDATES - S. F. VALLEY SECTION

	1	2	3	4	5	Score
1. M. Rubin	W3	W8*	W2	W4	W5	5 - 0
2. L. Nezhni	W5	D6	L1	D7	W4	3 - 2
3. B. Hernandez	L1	L5	BYE	W6	W7	3 - 2
4. P. Polland	L4	W7	W6	L1	L2	2 - 3
5. M. Lubin	L2	W3	L7	BYE	L1	2 - 3
6. M. Dushman	D7	D2	L4	L3	BYE	2 - 3
7. E. Bohanan	D6	L4	W5	D2	L3	2 - 3
8. J. Kent	W4	L1*	-	-	-	1 - 4

ATOMICS SECTION

	1	2	3	4	5	Score
1. W. Thomson	W13	W3	D2	W5	W4	4½-½
2. C. Warner	W10	W4	D1	W6	D3	4 - 1
3. F. Marshall	W9	L1	W11	W8	D2	3½-1½
4. G. Holtom	BYE	L2	W12	W9	L1	3 - 2
5. A. Freibergs	W7	W6	L9	L1	W10	3 - 2
6. M. Ek	W11	L5	W7	L2	W9	3 - 2
7. S. Oliva	L5	BYE	L6	W13	W12*	3 - 2
8. J. Mastous	D12	L9	W10	L3	BYE	2½-2½
9. E. Faelten	L3	W8	W5	L4	L6	2 - 3
10. J. Godwin	L2	W13	L8	W11	L5	2 - 3
11. R. Goldie	L6	W12	L3	L10	W13*	2 - 3
12. R. Stein	D8	L11	L4	BYE	L7*	1½-3½
13. R. Weinstein	L1	L10	BYE	L7	L11*	1 - 4

ATLAS SECTION

	1	2	3	4	5	Score
1. M. Cook	L5	W4	W11	W7	W2	4 - 1
2. S. Rubin	W13	W9	W3	W5	L1	4 - 1
3. B. Weiner	W6	W5	L2	W9	D4	3½-1½
4. M. Carroll	W14	L1	W7	W13	D3	3½-1½
5. P. Rhee	W1	L3	W13	L2	W9	3 - 2
6. R. Heisler	L3	W8	L9*	W14*	W10	3 - 2
7. S. Glassberg	D8	W11	L4	L1	W14	2½-2½
8. E. Townsend	D7	L6	W14	L10	W11	2½-2½
9. L. Neuton	W12	L2	W6*	L3	L5	2 - 3
10. G. Fennell	L11	L13	W12	W8	L6	2 - 3
11. R. Bukey	W10	L7	L1	D12	L8	1½-3½
12. A. Schultz	L9	L14	L10	D11	W13	1½-3½
13. J. Nanassy	L2	W10	L5	L4	L12	1 - 4
14. J. Leroy	L4	W12	L8	L6*	L7	1 - 4

WHITTIER SECTION

	1.	2	3	4	5	Score
1. J. Tindall	W7	W9	W3	W2	W8	5 - 0
2. W. Thornton	W10	W6	W4	L1	W9	4 - 1
3. R. Gish	W12	W8	L1	W5	W7	4 - 1
4. H. Keeseey	D18	W13	L2	W17*	W10	3½-1½
5. D. Hoier	L8	W12	W17	L3	W15	3 - 2
6. Fred Frilling	W15	L2	S7	D9	W13	3 - 2
7. Frank Frilling	L1	W14	D6	W11	L3	2½-2½
8. R. Henderson	W5	L3	W16	D10	L1	2½-2½
9. L. Hoke	W14	L1	W18	D6	L2	2½-2½
10. C. Larson	L2	W15	W11	D8	L4	2½-2½
11. R. Benz	D16	W18	L10	L7	W12	2½-2½
12. G. Bosco	L3	L5	W14	L15	W11	2 - 3
13. T. Streeter	D17	L4	D15	W16	L6	2 - 3
14. H. Thomas	L9	L7	L12	W18	W16*	2 - 3
15. W. Hall	L6	L10	D13	W12	L5	1½-3½
16. R. O'Hara	D11	D17	L8	L13	L14*	1 - 4
17. F. Pye	D13	D16	L5	L4*	-	1 - 4
18. G. Castleberry	D4	L11	L9	L14	-	½ -4½

EL SEGUNDO SECTION

	1	2	3	4	5	Score
1. R. Taylor	W8	D6	W7	W5	W3*	4½-½
2. H. Walpuski	W4	D7	W11	D3	W8	4 - 1
3. D. Wildschutz	W12	W5	W6	D2	L1*	3½-1½
4. H. Shipin	L2	W9	L5	W7	W10	3 - 2
5. G. Olsson	W10	L3	W4	L1	D6	2½-2½
6. J. Stolpe	W11	D1	L3	D8	D5	2½-2½
7. H. Cillers	W9	D2	L1	L4	W12	2½-2½
8. S. Vigneau	L1	W10	W9	D6	L2	2 - 3
9. Dr. B. Glazer	L7	L4	L8	W12	W11	2 - 3
10. V. Lopez	L5	L8	W12	W11	L4	2 - 3
11. J. Porter	L6	W12	L2	L10	L9	1 - 4
12. Zadrozny	L3	L11	L10	L9	L7	0 - 5

SAN BERNARDINO SECTION

	1	2	3	4	5	Score
1. L. Corbin	W6	L2	W5	W4	W3	4 - 1
2. K. Ogden	D4	W1	W6	D3	W5	4 - 1
3. T. Devine	W5	W6	W4	D2	L1	3½-1½
4. Dr. M. Schlosser	D2	W5	L3	L1	W6*	2½-2½
5. R. Allen	L3	L4	L1	W6*	L2	1 - 4
6. B. Mueller	L1	L3	L2	L5*	L6*	0 - 5

PASADENA SECTION

	1	2	3	4	5	Score
1. F. Brock	W27	W3	W8	L2	W9	4 - 1
2. I. Besen	D23	W18	W6	W1	D4	4 - 1
3. D. Cotten	W3	L1	W21	W16	W5	4 - 1
4. A. Vinock	W21	W11	D5	W14	D2	4 - 1
5. Dr. R. Brow	W22	W19	D4	W13	L3	3½-1½
6. A. Carpenter	W24	D13	L2	W18	W15	3½-1½
7. M. Methven	L14	W25	W22	D15	W13	3½-1½
8. S. Cross	W16	W15	L1	L9	W19	3 - 2
9. R. Kotz	L3	W20	W24	W8	L1	3 - 2
10. S. Morford	W25	D14	L13	D17	W20	3 - 2
11. E. Nilsson	W26	L4	L16	W24	W14*	3 - 2
12. G. Boehm	L12	L16	W26	W25*	W22	3 - 2
13. E. Hurt	W20	D6	W10	L5	L7	2½-2½
14. J. Yunker	W7	D10	W17	L4	L11*	2½-2½
15. T. Mishler	W12	L8	W19	D7	L6	2½-2½
16. R. Williams	L8	W12	W11	L3	D17	2½-2½
17. D. Argall	D18	W23	L14	D10	D16	2½-2½
18. H. Gandara	D17	L2	D23	L6	W27	2 - 3
19. J. Cromshov	W28	L5	L15	W21	L8	2 - 3
20. R. Skotte	L13	L9	W25	W23	L10	2 - 3
21. H. Rader	L4	W27	L3	L19	W24	2 - 3
22. M. Cowdrey	L5	W26	L7	W27	L12	2 - 3
23. M. Cotter	D2	L17	D18	L20	W26	2 - 3
24. J. Thiessen	L6	BYE	L9	L11	L21	1 - 4
25. H. Wingfield	L10	L7	L20	L12*	BYE	1 - 4
26. J. Fuller	L11	L22	L12	BYE	L23	1 - 4
27. J. Niehaus	L1	L21	BYE	L22	L18	1 - 4
28. C. Chrones	L19	-	-	-	-	0 - 5

SOUTHERN CALIFORNIA CHESS PROMOTIONAL PROGRAM

The Southern California Chess League is studying a program of chess tournaments for 1968 which consists of nine events: 1. Open; 2. Amateur; 3. Under 2100; 4. Under 2000; 5. Under 1900; 6. Under 1800; 7. Unrated; 8. Under 1600; 9. Under 1700. A revolving fund of \$1,000 would guarantee the first prize fund. The next five would be guaranteed the balance of the fund, and the last three would each have \$300 in merchandise. Entry fees would be \$10.50 for the first six events and lesser amounts for the last three. In addition, a one-time charge of \$5 would raise money for the 1969 Promotional Fund. The tournaments would be staged so as not to conflict with the established tournaments of the area, and it is suggested that locations for the "circuit" range widely over southern California. Darrell Rader is the author of the plan.

BARRETT WINS CITY TERRACE OPEN

Gordon Barrett scored 5-1 to edge Steve Parker and Irv Besen by half a point in the Open held at the City Terrace Club during May and June. The cross-table:

CITY TERRACE OPEN, 1967

	1	2	3	4	5	6	Score
1. G. Barrett	W13	W11	L2	W6	W3	W4	5 - 1
2. S. Parker	W10	D3	W1	L4	W7	W9	4½-1½
3. I. Besen	W14	D2	W11	W7	L1	W8	4½-1½
4. W. Bragg	W5	W8	L7	W2	W9	L1	4 - 2
5. H. Vaughan	L4	D6	W8	L9	W12	BYE	3½-2½
6. R. Gish	L8	D5	W10	L1	W13	W7	3½-2½
7. S. Cross	W12	W10	W4	L3	L2	L6	3 - 3
8. R. Cohan	W6	L4	L5	W12	W10	L3	3 - 3
9. H. Rader	L11	W13	W12	W5	L4	L2	3 - 3
10. R. Whittaker	L2	L7	L6	BYE	L8	W11	2 - 4
11. Patsch	W9	L1	L3	L13	BYE	L10	2 - 4
12. Clarke	L7	BYE	L9	L8	L5	W13	2 - 4
13. Vogt	L1	L9	BYE	W11	L6	L12	2 - 4
14. Wollschlager	L3	-	-	-	-	-	0 - 6

GAME OF THE MONTH

Phil Smith contributes an analysis of an exciting game from the North-South "day after" tournament, with typically thorough notes.

More than anything else, this painstaking work shows how opening theory can often get off the track - and an entire line can be discredited by a hasty evaluation of one or two variations.

The Editor has taken the liberty of interpolating further notes in brackets following Phil Smith's annotations.

Game No. 1006 - Ruy Lopez

White	Black
<u>I. Rivise</u>	<u>P. Smith</u>
1. P-K4	P-K4
2. Kt-KB3	Kt-QB3
3. B-Kt5	P-QR3
4. B-R4	Kt-B3
5. O-O	B-K2
6. Q-K2	P-QKt4
7. B-Kt3	P-Q3

Barden in his book on the Ruy Lopez recommends 7...0-0.

8. P-QR4 ...

If 8. P-B3, Pachman in his 'Open Games' says Black equalizes easily with 8... Kt-QR4, followed by 9... P-B4.

8. ... B-Kt5

If 8...P-Kt5? Evans gives 9. Q-B4 in M.C.O. Pachman gives 9. BxPch,

KxB; 10. Q-B4ch, P-Q4; 11. QxKt. Shakhmaty, 1937 refutes 9.Q-B4,P-Q4; 10. QxKtch, B-Q2; 11. Q-Kt7, B-QB4!; 12. KtxP,R-R2; 13. KtxB, KxKt!; 14. BxP, RxQ; 15. BxR,Kt-Kt5! and if 8...R-QKt1; 9.PxP, PxP Alekhine showed in several games that White gets an advantage by 10.P-B3, B-Kt5; 11. R-Q1, 0-0;12. P-Q4. However Evans claims Black R-QKt1,B-Q2 and B-Kt2 are 'satisfactory.' He cites a game he played with Earl Pruner in 1957, Monterey: 8...B-Q2; 9. P-B3,Kt-QR4; 10. B-B2, P-B4;11. P-Q4,Q-B2;12. PxBP, PxBP;13. R-Q1, 0-0; 14. QKt-Q2,P-B5;15. PxP,PxP; 16. Kt-B1,Kt-Kt2 with equality.
 9. P-B3 0-0
 10. P-R3 ...

Fine in 'PCO' says 10. R-Q1 is met by 10... Kt-QR4;11. B-B2,B-K3. For if now 12.PxP, PxP; 13. QxP? Kt-Kt6! 14. RxR,QxR;15.BxKt,R-Kt1, with a slight advantage for Black (Felderhof, Havasi, Munich,1936). Or 10. PxP, PxP; 11. RxR,QxR;12. P-R3 (Not 12.QxP? Kt-R2! Fine,Keres Avro, 1938), B-Q2;13. P-Q4,P-Kt5; 14. R-Q1, KPxP; 15. KtxP, PxP;16. KtxP, KtxKt; with equality, Book, Berg,Kemeri 1937. If 10. B-Q5,KtxB 11. PxKt,P-B4! 12. P-Q3,P-K5! 13. QPxP, Kt-K4 with advantage for Black, Prins, Pachman, Prague 1949. But 10. P-Q3 may be best. A game, Pachman, Rossolimo, Venice, 1950, continued.10...Kt-QR4;11. B-B2,P-B4; 12. R-K1,Kt-Q2; 13. P-R3,B-K3 with a slight advantage for White.

10. ... Kt-QR4

Although Pachman gives this move an exclamation mark, it may be second best to the formerly played 19...B-Q2 or BxKt. Fine thinks B-Q2 leads to a slight advantage for

White. Evans gives 10...BxKt; 11. QxB,Kt-QR4;12. B-B2,P-B4; 13. P-Q3,Kt-K1;14. Kt-Q2,Kt-B2; 15. R-K1,B-Kt4 with equality. Unzicker, Eliskases, Buenos Aires, 1960.

11. BxPch ...
 Evans says this is the best move, but Pachman gives it a question mark and says White should play 11.B-B2,B-K3!; 12. PxP,PxP;13.P-Q4,B-B5; 14. B-Q3,BxB;15.QxB,Kt-B5 (He says equality also may be obtained with 15...Kt-Kt6); 16. RxR,QxR;17. P-QKt3,Q-R7! 18. PxKt(18. Pachman says a leveling line is 18.QKt-Q2, KtxKt;19. BxKt,QxP;20.PxP, PxP; 21.R-Kt1,-Keres,Szabo, Amsterdam, 1956), KtPxP;19. Q-K3,QxKt;20. PxP,KtxP;21. R-K1,Kt-B4;22. B-R3,Q-Kt4! (Not 22...Q-Q6;23. PxP!QxQ; 24. PxB! and White wins. If 22...Q-Kt3;23.Q-Q4,R-R1! (Better than 23...Kt-Kt2; 24.QxQ! PxQ;25.Kt-Q4,Keres Rabar, match, USSR,Yugoslavia) 24. PxP,BxP;25.Q-Q5!Q-Kt2; 26. QxP,Q-Kt6! Cuellar,Szabo, 1956) After 22...0-Kt4! Vukovich analyzes an even game from 23.BxKt(23.Q-Q4, Kt-Q6), QxB;24.QxQ,PxQ; 25. R-Q1,R-Q1; 26. RxRch, BxR;27. Kt-Q2,P-KB3! Evans seems to be right about 11. BxPch and Pachman wrong. (Ed. note: Compare the variation in the previous note. Cannot Black play 13...Kt-Kt6 here also?)
 11. ... RxB
 12. PxB KtxKtP

None of the cited authorities really show what is wrong with 12 Kt-Kt6!?? 13.R-R3,KtxB (If 13... PxP?, 14.Kt-Kt5,R-KB1; 15. Kt-K6); 14. RxKt,KtxKtP; 15. PxP,PxP; 16. RxR,QxR. Pachman innocently leaves off with '17. QxP or P-Q4' and concludes that no definite evaluation is possible. Indeed, one is, as Rivise pointed out after the game; 17.QxP! QxP? (but otherwise White remains a pawn up); 18.Q-K8ch!! and wins-i.e., 18...B-B1; 19.QxRch,KxR, 20.Kt-Kt5ch.(Ed. Note: Pachman is not so innocent. Black can complicate matters to his advantage with 17...P-Q4 after 17.QxP and the position is not at all clear.)

13. PxP PxP
14. QxP B-R5!
15. Q-K2 ...

Here again Pachman gives this move a question mark and thinks White has to play 15.RxKt,RxR; 16.QxR, RxKt!; 17.PxR,Q-Kt4; 18.PxKt,QxPch with perpetual check!! But Pachman seems wrong again. 15.Q-K2 deserves an exclamation mark, not a question mark.(Ed. Note: Neither mark seems to be necessary if Black can at best draw, but not lose.)

15. ... BxPch
16. RxB KtxR
17. QxKt ...

If 17. KxKt,Kt-Kt6; 18.RxR,QxR; 19. P-Q3, KtxB; 20. Q-B2, the Queen cannot win the knight and prevent P-K5 at the same time.

17. ... Kt-Kt6
18. RxR QxR

For the third time Pachman is wrong. He cites a game Rabar,Vukshevich, Yugoslavia, 1957, which continued 19.Q-B1? (not Pachman's question mark), Q-R8 with obvious advantage

for Black. Rivise finds a better move but apparently an even better one is available.

(Ed. note: 19. Q-B1 is not so fatal as it seems. After 19... Q-R8; 20. Q-B4 draws handily.)

19. P-Q4?! ...
Seemingly a strong move and certainly better than 19.Q-B1, but P-Q3! is better and may win for White. 19.P-Q3!,KtxB; 20.Q-B2,Kt-R7; 21. Kt-Kt5, R-B3 or B1; 22. Q-Kt3ch, P-Q4 or K-R1; 23. QKt-R3!, Kt-B8; 24. Q-Q1!, Kt-R7; 25. Q-R1! wins the Knight. 25. Q-R1!, Q-R2ch; 26. K-R2, Q-B7; 27. Kt-R3!
(Ed. note: Black has the further resource of 20... Q-R2ch; 21. P-Q4, PxP; 22. PxP, P-B4; 23. QxKt, PxP with a lot of play.)

19. ... QxP!!
If 19...KtxB the above line is even stronger for White for Black has no check at R2.

20. QKt-Q2 ...
Seemingly winning, but Black has a saving move.

20. ... RxKt!!
21. KtxR

If 21.PxR,Q-Kt3ch; and Black is a pawn up. If 21. QxR, either Q-K8ch or QxQ leads to equality or a draw by repetition.

21. ... KtxB
22. PxP! Kt-K7ch!

Rivise's clever 22nd move has won back his pawn, for if 22... PxP? 23. Q-R7! wins a pawn at

least because of the threat of 24. Q-Kt8ch and 25. Kt-Kt5ch.

23. K-B1 Kt-B5
24. PxP Q-Q6ch
25. K-Kt1 QxQP
26. P-QKt4 K-B2

27. Q-K3	Kt-K3	26. Kt-K5	RxKt
28. Q-K4	Q-B5	27. RxKt	RxR
Draw agreed. If White trades Queens		28. Kt-B3	R5-K3
he could lose the ending. Conclusion		29. P-B3	Q-K6
7...0-0 needs more investigation.		30. B-K1	R-K4
Of if Black is going to play 7...		31. Q-Q2	Q-Kt3
P-Q3;8.P-QR4, Pruner's B-Q2 may be		32. R-Q1	Q-R3
best. (Ed.Note: Our only conclusion		33. K-Kt1	Q-K3
is that chess games appear to be		34. B-B2	P-B4
won or lost more on the basis of		35. P-KR3	P-B5
the imaginative play exhibited		36. Kt-K4	Q-QB3
here by both Rivise and Smith than		37. Q-Q6	QxQ
by opening analysis.)		38. RxQ	R4-K3
			and Black Won

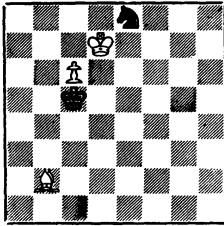
Game No. 1007 - Ruy Lopez

White	Black
<u>R. Clark</u>	<u>F. C. Ruys</u>
1. P-K4	P-K4
2. Kt-KB3	Kt-QB3
3. B-Kt5	P-Q3
4. P-Q4	B-Q2
5. 0-0	Kt-B3
6. Kt-B3	P-QR3
7. BxKt	PxB
8. PxP	PxP
9. KtxP	B-Q3
10. Kt-B3!	0-0
11. P-K5	B-KKt5
12. PxB	PxP
13. B-KKt5	P-R3
14. B-R4	P-Kt4
15. B-Kt3	P-Q4
16. Q-Q3	R-K1
17. KR-K1	Q-Kt3
18. P-Kt3	B-R4
19. Kt-K5	R-K3
20. Kt-R4	Q-R2
21. P-B4	R1-K1
22. PxP	PxP
23. K-B1	B-Kt3
24. KtxB	Kt-K5
25. QxP	P-QR4

A coffee house game if there ever was one! Black plays carelessly (6...P-QR3) and finds himself a Pawn down. Instead of being content with this relatively minor loss, he decides to go for broke (6...PxB). 10. Kt-B3 wins a full piece, but Black continues to muddy the waters. Instead of 26.Kt-K5, RxKt first would have given White an easy ending. After missing such opportunities to simplify matters, it was not easy to see that 27.Q-Q3,Q-R3! 28. R-K3! Kt-Q7ch, 29.K-K2 would have held everything. With all kinds of pressure developing Black missed his chance to open the game up (30...P-Kt5!) and was not more than equal at the time control. In subsequent play he eventually won.

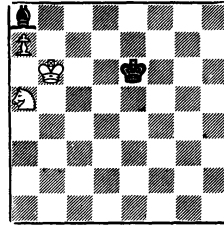
TASKS:

No. 263



White to Move and Win

No. 264



White to Move and Win

The stratagems employed by minor pieces to force a pawn through to the Queening rank are as different as the names of the pieces and their positions on the board. In No. 263, an old chestnut from Chess Player's Chronicle, 1856, White can make progress only by forcing the Black King to desert either Kt3 or Kt4 or B4 or Q4 (allowing KxKt), or to move the Knight. All the while, the Bishop must guard B6 to prevent a check. How can White create a Zugswang, since, when he checks at Q4, Black simply plays to Kt4 and White is in Zugswang? He must beat around the bush. 1. B-B3, K-Kt3; 2. B-R5ch, K-Kt4; 3. B-Q8, K-B4; 4. B-Kt5, K-Kt4; 5. B-R4!, K-B4 and now White can get to Q4 without checking: 6. B-B2ch, K-Q4; 7. B-Q4 and wins.

Tempo plays an unexpected role in No. 264, where it is obvious that White will "smother" the Bishop and capture it at R8. The question is, when? If 1. K-B7, K-K2; 2. K-Kt8, K-Q1; 3. KxB, K-B2! all the King's horses cannot move the Black King from his post. However, the Black King can be given less of a choice with 1. K-B7, K-K2; 2. K-B8! Now, after 2... K-K1; 3. Kt-B4!, K-K2; 4. K-Kt8, K-Q1 White has gained a move, and he can play 5. Kt-Q6 with the unavoidable threat of 6. Kt-Kt7. The reader may work out for himself what happens after 2... K-Q3 instead of 2... K-K1.

NORTHERN CALIFORNIA CHAMPIONSHIP: (5-round Swiss)

Date: November 4-5, 1967
Place: Mechanics' Institute Chess Room, 57 Post St., San Francisco
Entry Fee: \$10 plus USCF and CSCF memberships
Payable to: William Addison, Director, Mechanics' Institute Chess Rm.,
57 Post Street, San Francisco, Calif. 94104
Director: Chuck Savery
Schedule: Final registration at 9:00 am Saturday, November 4th.
Round 1: 10 am Saturday; Round 2: 3 pm Saturday;
Rd. 3: 7 pm Sat.; Rd. 4: 10 am Sun.; Rd. 5: 4 pm Sun.
(Rounds 1-2: 40 moves/1½ hours; Rounds 3-4-5: 40 moves/2 hours.)

BECHTEL S.F. OPEN:

Date: November 18-19, 1967 (5-round Swiss)
Place: Hilton Hotel—Teakwood & Walnut Suites, Mason and
O'Farrell Streets, San Francisco
Entry Fee: Class Expert/A: \$7 and USCF membership
Classes B and C: \$7
Payable to: Bechtel Employees Club
Director: George Koltanowski
Information: I. Zadonsky, Bechtel Corporation,
301 Mission Street, San Francisco

AMERICAN OPEN: (Prize Fund: \$2,400 minimum)

Date: November 23-24-25-26, 1967 (Thanksgiving week end)
(8 rounds, Swiss system)
Place: Miramar Hotel, Santa Monica, California
Entry Fee: \$25 at registration time. \$20 for advance entries re-
ceived by November 15. A special rate of \$6 for juniors
under 14.
Payable to: Santa Monica Bay Chess Club
Director: Isaac Kashdan
Entries and
Information: Chess Editor, Los Angeles Times,
Times Mirror Square,
Los Angeles, Calif. 90053