

# THE CALIFORNIA CHESS REPORTER

SPECIAL BULLETIN

AUGUST, 1955

WELCOME  
TO THE  
United States  
Open Chess Championship



AUGUST 8 - 20, 1955



SPONSORED BY  
LINCOLN PARK  
CHESS AND CHECKER CLUB  
LONG BEACH  
CALIFORNIA

---

CONTENTS

---

CALIFORNIA STATE CHESS FEDERATION.....	2- 3
SOUTHERN CALIFORNIA CHESS LEAGUE.....	4-31
CENTRAL CALIFORNIA CHESS LEAGUE.....	32-37
SAN FRANCISCO BAY AREA CHESS LEAGUE.....	38-47
OTHER GROUPS.....	48-51

## THE CALIFORNIA CHESS REPORTER

THE CALIFORNIA CHESS REPORTER - Ten numbers per year.

Official Organ of the California State Chess Federation.

Editor: Guthrie McClain, 244 Kearny St., 4th Floor, San Francisco 8.

Associate Editors: Bob Burger, Valdemars Zemitis, Dr. Mark W. Eudey, Berkeley; Neil T. Austin, Sacramento; Francis Crofut, San Jose; George Goehler, Irving Rivise, Los Angeles.

Task Editor: Dr. H. J. Ralston.

Games Editor: N. E. Falconer, Lafayette.

Guest Annotator: Imre König, San Francisco.

## THE CALIFORNIA STATE CHESS FEDERATION

The CSCF was formed in 1948-49 as a confederation of three main chess leagues in the State: Los Angeles County (now Southern California), Central California and San Francisco Bay Area. The Redwood Empire and Monterey leagues joined subsequently. The CSCF was successor to the old California Chess Association, which did not take in as large an area as the Federation now does.

The CSCF is governed by four officers and a Board of Directors, which elects the officers. The directors represent seven geographical areas, and are elected for one-year terms, on a fiscal year basis, at the annual meeting. The officers serve for one calendar year.

## OFFICERS 1955

President	Le Roy Johnson, Los Angeles
Vice-President	Henry Gross, San Francisco
Secretary	Kyle Forrest, Manhattan Beach
Treasurer	Dr. Ralph Hultgren, Berkeley

## DIRECTORS 1955-56

1.	Guthrie McClain (chairman)	S.F. Bay Area
2.	Isaac Kashdan	Southern California
3.	Herman Steiner	Southern California
4.	George Hunnex	Riverside-San Bernardino
5.	Jerald B. Slavich	Monterey Area
6.	P. D. Smith	Central California
7.	Dudley Hosea	San Diego
8.	Gunnar Rasmussen	Redwood Empire
9.	Joe Stanley	At Large, No. Calif.
10.	Al Raymond	At Large, So. Calif.



CALIFORNIA STATE CHESS FEDERATION EVENTS: Each year the CSCF holds a number of important fixtures. Attendance has been growing by leaps and bounds, and it is believed that chess interest in our State is second to none.

1. The North vs. South team match. This traditional event is customarily held at San Luis Obispo, on the coast about half way between San Francisco and Los Angeles. The annual meeting is held on the night before the match. The match is played on the Sunday of the Memorial day week end, starting at 11 A.M. and continuing to a finish. The North won the 1955 match, held May 29, by the score of 35-24. It should be pointed out here that the North-South match is not a casual "chess picnic" sort of affair; the players are carefully selected and invited, matched in order of strength, and play with clocks at the rate of 20 moves per hour. There were 59 players on each side in 1955. The record number was 72, in 1954. The match was first played over-the-board in 1927, and was played by telegraph in prior years.

2. The California Open. This tournament is open to all. The entry fee is \$5 (plus CSCF membership for Californians only), and all the "take" is returned in prizes. It is a 7-round Swiss, played over the Labor Day week end; three rounds are played Saturday, two Sunday and two Monday. The first two rounds are seeded, and play is at the rate of 30 moves per hour; thereafter the rate is 20 m.p.h. After the 30-move and 40-move time check, the rate is 15 moves and 10 moves per half-hour. This helps avoid unfinished games, and it is a fact that since 1951 there has been only one game for adjudication. The 1954 California Open, at Santa Barbara, was won by Herman Steiner. There were 81 players and first prize was \$120. The 1955 California Open will be held at Fresno, in the great Central Valley of California.

3. The State Championship. In order to play fair with all championship contenders in a state as large as ours, we hold elimination tournaments in Los Angeles (qualifies four finalists), San Francisco (qualifies three), and Modesto (qualifies one). The remaining finalists of the field of ten are the defending champion and the current Open champion. In 1954 a total of 81 aspirants entered the qualifying tournaments: 50 in Los Angeles, 19 in San Francisco and 12 in Modesto. The State Championship finals are held on the Thanksgiving week end and are alternated between San Francisco and Los Angeles; when the Open is in the north, the Championship will be in the south. The 1955 finals will be held in Los Angeles. Herman Steiner is the current champion. A women's state championship will also be held in Los Angeles at Thanksgiving. International master Sonja Graf Stevenson is the present state champion.



The text relating to the Southern California Chess League and member clubs was collected and prepared by Kyle Forrest, League Secretary.

### SOUTHERN CALIFORNIA CHESS LEAGUE

The Southern California Chess League was formed on January 6, 1955 by a change in name from the Los Angeles County Chess League.

The Los Angeles County Chess League was founded in 1947 by a group headed by George Steven and Paul Wrangell to meet the need for a democratic chess organization. About seven clubs made up the first League membership.

The change in name from Los Angeles County to Southern California Chess League was made to encourage membership from clubs located in adjacent counties - even as far south as San Diego.

In general the aims and purposes of the League are (1) to provide a representation of chess clubs wherein the officers are elected annually, (2) to promote a friendly chess-playing rivalry between the member clubs, and (3) to sponsor club matches and various individual matches within the League for prizes.

Member clubs pay \$5 per year dues, while additional League income is derived from match entry fees (10%) and from the proceeds of special events.

The Southern California Chess League at present consists of twelve member clubs: (1) Beverly Hills, (2) City Terrace, (3) Cosmopolitan, (4) Hollywood, (5) Inglewood, (6) Long Beach, (7) North American, (8) Pasadena, (9) Santa Monica, (10) Valley, (11) Van Nuys, and (12) Water & Power.

Six regular League meetings are held annually. Hollywood has been the scene of a majority of the meetings, with several being held in the Water & Power club rooms.

Note: All photos in this section were taken by Nancy Roos, Official League Photographer, 3660 West Third Street, Los Angeles 5; phone: DU 2-8807.





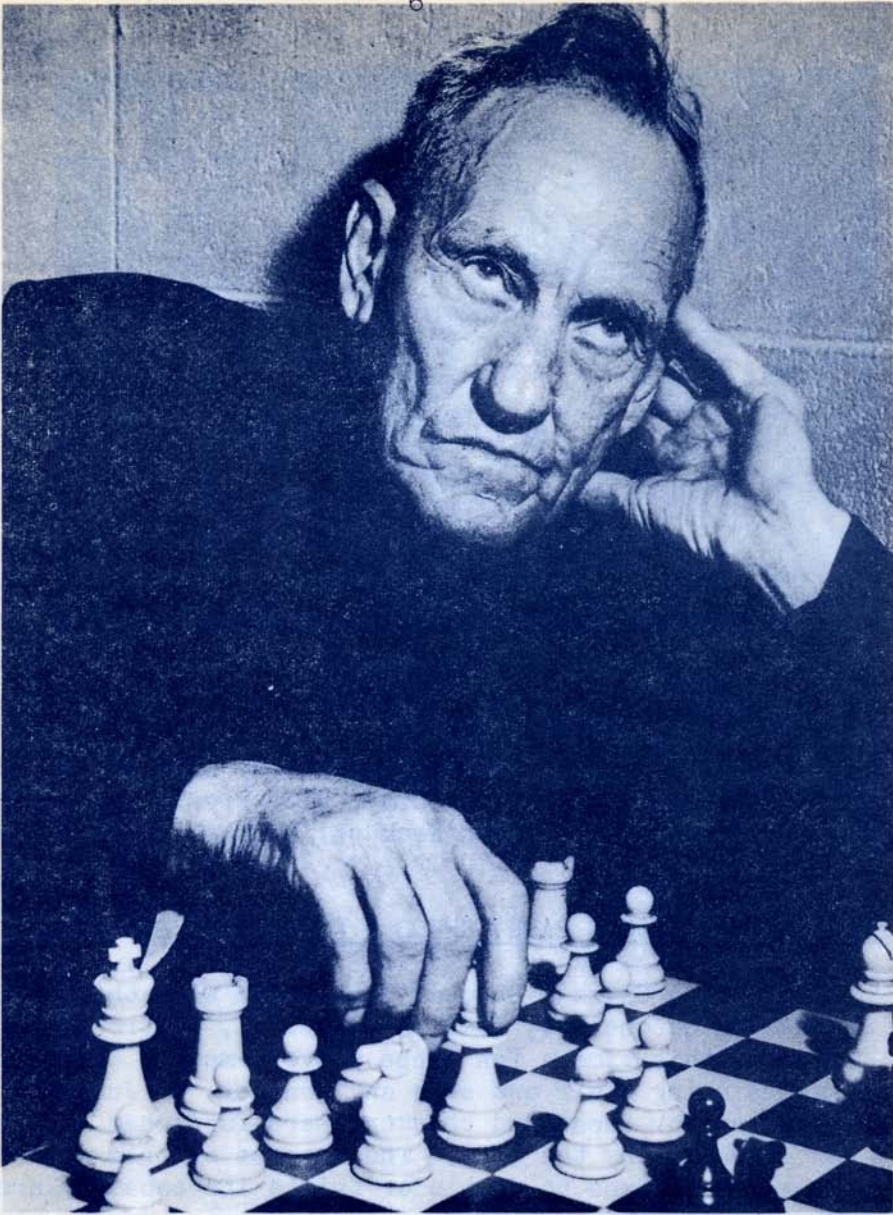
1955 Officials of the Southern California Chess League  
 (Left to right:) Kyle Forrest, Secretary; Irving Rivise, President; Herman Steiner, Tournament Rules Committee; Nancy Roos, Photographer; (standing) Charles E. Gray, Vice President; and William J. Wheeler, Treasurer. (John Keckhut, Youth Director missing.)

#### LONG BEACH (LINCOLN PARK) CHESS & CHECKER CLUB

The Long Beach Chess & Checker Club began with the opening of its clubhouse on October 14, 1949 in beautiful, subtropical Lincoln Park. Prior to this time a few chess players met in the park for friendly games using their own sets and boards. On June 25, 1950 forty-two tables for chess and checkers were furnished and installed in the new clubhouse by the City. The success of this club has been so phenomenal that plans to double or triple its capacity are rapidly nearing completion.

Dues are \$4 per year or \$2 per half year at the member's option. Present membership totals about 390 chess and checker players.

The clubhouse is open seven days a week from 9 A.M. 'til midnight.



John P. Looney, President, Long Beach Chess & Checker Club



Present officers are: John P. Looney, President; Joseph Granfield, Vice President; Thomas H. Golden, Secretary, and M. H. Bapp, Treasurer. An executive committee of two members is also active in club affairs.

Many club members live in nearby cities and adjacent counties, while some are located as far away as San Francisco, San Diego and the state of Iowa.

The City of Long Beach first became aware of the real importance of its chess club when Larry Remlinger took part in the 1953 National Junior Chess Championship in Kansas City.

At present this club boasts the largest junior chess group in California including about 35 members. At least four of these boys expect to take part in the National Junior Chess Championship during July in Lincoln, Nebraska.

Many imposing cups and other awards adorn the clubhouse walls.

The club sponsors an annual city-wide tournament to determine the chess champion; also, it sponsors an annual Southern California Checker Tournament. The 1955 winners were: Larry Remlinger in Chess, and Joseph Granfield in Checkers.

#### Long Beach (Lincoln Park) Chess & Checker Clubhouse





Larry Remlinger, Long Beach City Chess Champion, 1955





1955 Long Beach "A" Team

(seated) Larry Remlinger, Jefferson Stockton;  
 (standing) William Keller, John Rinaldo.

1955 Long Beach "B" Team

(seated) N. Morein, (\_\_\_\_\_), Orlo M. Rolo;  
 (standing) A. W. Markus, Larry Weiss, (\_\_\_\_\_).





BEVERLY HILLS CHESS CLUB

The Beverly Hills Chess Club was organized about ten years ago by a small group of chess enthusiasts headed by Ellis Levy. Although many notables have been and still are active the total membership at any time seldom exceeds 30 people.

Meetings have been held on Thursday nights in the charming clubhouse at Roxbury Park on Olympic Boulevard in Beverly Hills. However, in May, 1955 the Club moved to the Robertson Recreation Center at Airdrome Street in Culver City where its regular Thursday night meetings will be continued in the future.

Club dues are \$2 per year.

This Club has fielded a strong "B" Team the past two years in the League team matches.

Officers are elected annually in the fall at a snack-meeting held at Ellis Levy's home. On the same night the cup award is made to the winner of the Club's annual round robin tournament who holds the title of Club Champion for the next year. This meeting never breaks up until all members present beat the new Champion at least one game, and Ellis' kitchen is cleaned - of all refreshments.

The present club champion is Nat Robinson.

Present club officers are: Eric Johansson, President; Ellis Levy, Secretary-Treasurer; and Shep Andalman, Tournament Director.

CITY TERRACE CHESS CLUB

The City Terrace Chess Club was organized in July, 1953 by Nathan Kramer and Bernard Oak, thus adding another activity to the seven year old City Terrace Cultural Center.

Present membership includes 42 members and 15 honorary members. Mr. Irving Spero, former Champion of Ohio State is one of the better known members of this club.

Dues are \$2 per year; membership is open to anyone. The Club meets every Wednesday evening. Two rooms of the Center's spacious, modern headquarters are used by the Chess Club. One well-equipped room is used for chess play, lectures and meetings. The other is a library where players can retire for quiet study of the game from a selection of club-owned chess books.

One page of the Center's Annual Report is devoted to the Club's chess activities of the previous year.

This club maintains an active program of sponsoring frequent simultaneous exhibitions, tournaments and matches. Many well-known chess players have been recent guests of the club, such as George Koltanowski, Herman Steiner, Nancy Roos, H. Rogozin, Dr. Sidney Weinbaum and Harry Borochoy.





Beverly Hills Chess Clubhouse, Roxbury Park

Beverly Hills Chess Club

(seated) A. Lovinger, Phil Waterman, Ellis Levy, F. Engren, and John Burton.

(standing) Shep Andalman, V. Fotre, Sid Klinger, R. Steinberg, J. Marmer and N. Robinson.





1955 City Terrace "A" Team

(left to right) J. Weiner, E. Slobin, Bernard Oak (Captain) and Dr. Victor Dane.

1955 City Terrace "B" Team

(left to right) Dr. Sol Davis (Captain), M. Samson, S. Weiner, P. Hubbard, Rubin Enricus and M. Leherer.







#### City Terrace Chess Club

(seated) Dr. Sol Davis, P. Hubbard, Dr. Victor Dane, M. Samson and Mrs. V. Dane.  
 (standing) E. Slobin, J. Weiner, Bernard Oak, R. Enricus and M. Leherer.

City Terrace joined the Southern California Chess League in 1955 and produced strong teams for both "A" and "B" matches.

A junior group, ages 12 to 16 years, was formed on June 22, 1955 with an initial registration of 15 boys.

Club officers are: Nathan Kramer, President, and Bernard Oak, Secretary. This well-organized young club should flourish under its present very able management.

#### COSMOPOLITAN CHESS CLUB

The Cosmopolitan Chess Club was founded in the fall of 1947 by Charles E. Gray and Sotero Rodriguez. Meetings were held for a short time in Echo Park, then for about two years in Central Playground. Since December, 1949 club headquarters have been in the present comfortable residence of Mr. Gray.

This Club publishes a monthly bulletin sheet of chess news which hasn't missed an issue since its beginning in October, 1948.

Dues for active members are \$4 per year. Associate members pay only \$1 per year but do not have ladder privileges although they do receive the monthly bulletin. This club has maintained about the same size membership since its beginning which now numbers 19 active and 19 associate members.



Cosmopolitan club officers are: Charles E. Gray, President; Sotero Rodriguez, Secretary-Treasurer; Tournament Directors are Tom Crogg and Lou Domanski. Elections are held annually on the first Wednesday evening in January.

The Club meets regularly on Wednesday nights. A special feature is added to the last meeting in each month in the form of a rapid transit round robin for cash prizes, open to club members only.

Three important chess events take place annually: (1) The Club round robin championship tournament for active members only, held during October, November and December - winner gets a Cup; (2) the Swiss tournament, open to all, played during the summer, for cash prizes; and (3) the Open-House Tournament played on one Sunday in the spring for cash prizes.

During December, 1952 when Mr. Gray was President of the Los Angeles County Chess League he prepared and published, with the assistance of John Keckhut (Santa Monica Chess Club), a 16-page "CHESS MANUAL FOR SCHOOLS AND PLAYGROUNDS" which has since become widely used - even in Canada. Mr. Gray has some remaining copies of this manual still available for those who can make use of them. The increasing interest and playing strength of the junior players in Los Angeles County schools can be attributed to Mr. Gray's very constructive effort.

### Cosmopolitan Chess Clubhouse







Cosmopolitan Chess Club

(seated) R. Taylor, C. E. Gray, W. Foreman, W. McPherson and L. Zeitlin.

(standing) L. Domanski, H. Sturgis, T. Cragg, A. Gates, K. Stone and S. Rodriguez.

1955 Cosmopolitan "B" Team

(seated) A. Gates, L. Zeitlin and L. Domanski.

(standing) T. Cragg, W. McPherson, R. Taylor and K. Stone.





## HOLLYWOOD CHESS GROUP

The Hollywood Chess Group was founded by Herman Steiner in 1933 together with about 50 members of the movie colony. This event was coupled with his wedding reception at the Hollywood Athletic Club where the great J. R. Capablanca was a guest of honor.

In 1938 this group moved to its present location, known to most chess Masters the world over.

Dues are \$25 per year and members number over 100. Recently the club rooms were redecorated and remodeled to increase player capacity to over 40. Club rooms are open seven days per week and nights until chess enthusiasm slips into yawns. "Phone me anytime up 'til 3 A.M. if you have a chess problem," says Herman.

The Hollywood Chess Group is essentially Herman Steiner, now rated as the country's sixth ranking Chess Master. His friendly, dynamic personality pervades the atmosphere when he is "in." When he is "out" silence reigns - no loud annotations, no heated discussions about chessic postmortems, high-lights or trivia. Herman was U.S. Chess Champion and Open Champion during the last decade. Also, he has been California State Champion many times. His weekly chess column in the Los Angeles Times is widely read all over the world. Herman promotes chess in many ways. He teaches chess to players of all strengths - yes, even to masters; he travels upon request to any club for lectures or simultaneous matches; he appears on radio and television programs where chess is the topic; he hosts visiting Masters and works hard to put over their shows; he manages many tournaments open to all every year; he aids the Southern California Chess League and the California State Chess Federation; and he has written a book on chess, soon to be published. Herman has performed one remarkable accomplishment in his book: in Chapter V "FOUR GAMES" he succeeds in demonstrating how to play chess - a feat not to be found in any other book (this writer's opinion).

His teaching has produced many young experts and masters, such as Eugene Levin of Los Angeles and Jim Cross of Glendale.

Herman has collected many cups, awards, trophies and other prizes down through the years - and will gladly show them upon request. His personal chess library is a sight to behold with shelves to the ceiling and books in many languages.

At this writing Herman is playing eighth board on the U.S.A. Chess Team in Moscow.

Hollywood is by far the strongest club in the Southern area. Its membership includes many masters, experts and "A" players. Numerous awards won in various matches and tournaments adorn the clubhouse walls.





Hollywood Chess Group

(left to right) Herman Steiner, Senior Master; Harry Borochow, Expert; Irving Rivise, Master, and Jack Moskowitz, Master.

Hollywood Chess Group

(seated) Paul Harmat, Isaac Kashdan, Grandmaster, Mrs. Lena Grumette, Herman Steiner, Senior Master, Mrs. Nancy Roos, and Irving Rivise, Master. (standing) Bob Jacobs, Guthrie McClain (visiting), Sam Geller, P. V. Nielsen and George F. Goehler.





1955 Hollywood "A" Team

(seated) Gene Rubin and Herman Steiner.

(standing) Irving Rivise, Morris Gordon and Bob Jacobs.

1955 Hollywood "B" Team

(seated) Don Maron, George F. Goehler, Mrs. Lena Grumette and Mrs. Nancy Roos.

(standing) Sam Geller and Paul Templer.





INGLEWOOD CHESS CLUB

The Inglewood Chess Club was organized on November 13, 1946 by a small group headed by Hans Zander.

Annual membership has been maintained at about 40.

Dues are \$3 per year plus a \$2 initiation fee for new members. Meetings are held regularly on Wednesday nights at 7:30 P.M. in the conveniently located, well-equipped Inglewood City Recreation Center.

This Club sponsors annually a Club tournament in the fall, and an Open tournament in the spring.

Inglewood has supported the League . . . in fact Mr. Zander was one of the group which founded the League. This year's "A" and "B" teams provided stiff competition in the matches. The Club boasts two plaque awards won in prior League matches.

Present officers are: N.J. Goldberg, President; LeRoy Johnson, Vice President; Hans Zander, Secretary-Treasurer; Charles Kodil, Tournament Director, Abe Freeman, Director; and Kyle Forrest, Representative to the League.

Inglewood Chess Club

(seated) C. Kodil, L. Johnson, H. Zander, A. Freeman, B. Bylinkin, and N. Thomas.

(standing) R. Berg.





1955 Inglewood "A" Team

(left to right) K. Reissmann, B. Bylinkin, N.J. Goldberg and N. Thomas.

1955 Inglewood "B" Team

(seated) L. Johnson, R. Koutz, K. Forrest and R. Reed.  
 (standing) A. Freeman and G. Rubin.







Inglewood Chess Clubhouse

1955 North American "B" Team

(seated) Matthew C. Ek, (\_\_\_\_\_, \_\_\_\_\_).

(standing) Warren McGill, C. F. McKinnon, N. Vatsos, (\_\_\_\_\_, \_\_\_\_\_).





Pasadena Chess Clubhouse, Central Park

Pasadena Chess Club

(seated) W. Miller, E.F. Saldana, W.J. Edwards, J.O. Oltmans,  
A. Taylor, E.B. Adams, R. Hargraves and Dr. R.O. Wilson.

(standing) E. Semler, B. Bader, D.J. Hubbard, W.L. Stanton,  
R. Redding, T.W. Potter, D.L. Young, W. Adams and C.J. Shults.





### NORTH AMERICAN CHESS CLUB

The North American Chess Club was formed in 1952.

Meetings are held Thursdays at 8:00 P.M. in the North American Aviation Plant cafeteria, 12214 Lakewood Boulevard, Downey.

Membership is restricted to employees, their relatives and friends. No dues are charged. Visitors are welcome.

About 15 to 20 players are very active in this club, with another group of 40 to 50 occasional players.

North American has been affiliated with the League for the past two years in which it has entered a strong "B" team.

Present officers are: Warren McGill, President; C. F. McKinnon, Secretary-Treasurer; and Harold Bell, Tournament Director.

### PASADENA CHESS CLUB

The Pasadena Chess Club appears to be the oldest in the Los Angeles area, having been founded prior to 1920 at which time meetings were held in the office of the Chamber of Commerce.

In 1932 the Club was meeting in the Maryland Hotel where it was host to one of America's greatest chess tournaments which drew many foreign masters, including Alexander Alekhine. Later the Club met in the Green Hotel, then in the parish house of the All Saints Church. It has been located in the clubhouse of Central Park, Del Mar and Raymond streets since about 1944, where it meets on Fridays at 8 P.M.

Dues are \$8 per year, payable quarterly.

Total membership remains fairly constant at from 30 to 40.

This Club has sponsored the "San Gabriel Valley Open Tournament" every fall since its initiation by E. B. Adams in 1948. Pasadena is one of the League's original clubs. On occasion it sponsors simultaneous exhibitions such as the 40 board match given by Sammy Reshevsky in 1953.

Present officers are: E.B. Adams, President; Al Larsen, Vice President; and Alex Taylor, Secretary-Treasurer.



1955 Pasadena "A" Team

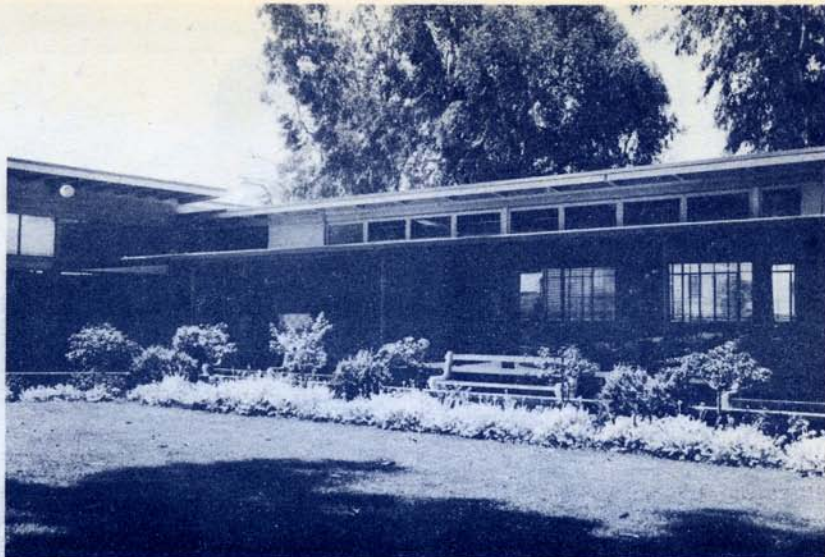
(left to right) Dr. R.O. Wilson, George Croy, E.B. Adams and W. Miller.

1955 Pasadena "B" Team

(seated) D.L. Young, D.J. Hubbard, E.F. Saldana, R. Hargraves and C.J. Shults.  
 (standing) E. Semler.







Santa Monica Chess Clubhouse, Lincoln Park

Santa Monica Chess Club

(seated) W. Sloan, Mr. Collins, Sr., (\_\_\_\_\_), H. Abel, O.H. Wentcher and John Keckhut.

(standing) B. Mintz, P. Wrangell, (\_\_\_\_\_), R. Sale, Dr. B. Collins, J. Hatfield, E. Edwards, Robert G. Cross and Ray Martin.





1955 Santa Monica "A" Team

(lower) Ray Martin and Herbert Abel.  
 (upper) Robert G. Cross and John Keckhut.

1955 Santa Monica "B" Team

(seated) P. Wrangell, B. Mintz, J. Hatfield and Dr. B. Collins.  
 (standing) O.H. Wentcher and E. Edwards.





SANTA MONICA CHESS CLUB

The Santa Monica Chess Club was founded in 1946 by Paul Wrangell and George A. Steven (now President of Van Nuys Chess Club).

Meetings are held on Mondays at 7 P.M. in the Lincoln Park Clubhouse, 7th and Wilshire Boulevard.

Dues are \$6 per year, payable semiannually. The membership totals about 60 players.

This Club sponsors several tournaments each year and is one of the League's original member clubs. Both "A" and "B" teams are entered in the League matches and a strong rivalry exists with the Hollywood and Long Beach clubs.

Present officers are: O.H. Wentcher, President; Herb Abel, Vice President; John Keckhut, Secretary-Treasurer; and O.H. Wentcher and Ray Martin, Tournament Directors and Team Captains.

VALLEY CHESS CLUB

The Valley Chess Club was formed at Christmastime, 1950, by Ralph Hagedorn and Sam Krinsky. Until recently meetings were held in the Recreation Building at Vanowen Park, North Hollywood. Now the Club meets in North Hollywood Park on Tujunga near Chandler Street.

Meetings are on Wednesdays at 7 P.M. There are no dues and visitors are always welcome.

The Club maintains a ladder rating for its members which now number 40.

An annual round robin Club tournament is held each summer.

Valley has always been a member of the League and fields a "B" team for the annual matches.

Ralph Hagedorn is acting President of the Club, and as such he handles all club matters.



Valley Chess Clubhouse, North Hollywood Park

Valley Chess Club

(seated) W. Male, J. Drago, G. Norman, E. Malmuth, P. Senge and I. Talmadge.

(standing) R. Hagedorn, L. Pinson, C. Boyer, L. Mercy, J. McCardle, A. Manson, B. Slate, W. Melworm, G. MacMahon and F. Dunn.







1955 Valley "B" Team

(seated) L. Pinson and G. Norman.

(standing) L. Mercy, W. Melworm, C. Boyer, J. McCardle and R. Hagedorn.

1955 Van Nuys "A" Team

(left to right) Peter Meyer, R.P. Lorber, George A. Steven and Howard Wildman.



VAN NUYS CHESS CLUB

The Van Nuys Chess Club was formed in 1952 by Don McGintey of Woodland Hills. It was a social chess group meeting at the McGintey residence.

Presently the Club meets both at the Marquardt Aircraft Co. and at the home of George A. Steven in Sherman Oaks.

Meetings are at 7:30 P.M. on Fridays. No dues are charged. About 15 members turn out regularly.

Van Nuys has produced a strong "A" team in League matches the past two years.

The Club sponsors a summer round robin tournament and occasional simultaneous matches by visiting masters and experts.

George A. Steven is acting President of the Club.

WATER & POWER CHESS CLUB

The Water & Power Chess Club was formed about 1940 by Cal Taber and Charles E. Kodil as a part of the City's Employees' Association. Membership is restricted to employees and members of their families.

Dues are \$2 per year.

The Club meets Fridays at 7:30 P.M. in Room 300, Water & Power Bldg., 110 South Boylston Street, Los Angeles, where much space and equipment are available.

This Club is one of the original League clubs and usually has a "B" team entry in the annual matches. It also sponsors various tournaments, even including those open to other City Departments.

Present membership totals about 15 players.

The Club's officers are: Calvin Taber, President, and Joe Bell, Secretary-Treasurer and Team Captain.





Water & Power Chess Club

(seated) J. Russell, Cal Taber and George Chase.

(standing) J. Kovac, D. Norton, L. Anderson, B. Campett,  
A.C. Thompson and Joe Bell.

1955 Water & Power "B" Team

(seated) J. Russell, D. Norton and B. Campett.

(standing) J. Kovac, A.C. Thompson and Joe Bell.



Right: Mike Hailparn,  
President Central  
Valley Chess League.



Left: Phil D. Smith,  
CCCL Individual  
Champion.



CENTRAL CALIFORNIA CHESS LEAGUE - by Neil T. Austin.

The need for organized play among the several chess clubs in the interior valleys was recognized as early as 1936. However, but for one abortive attempt in 1936, nothing tangible was accomplished until 1948, when the Fresno, Modesto, Sacramento and Stockton clubs succeeded in organizing for the primary purpose of playing team matches. The San Jose and Oakdale clubs joined in 1949, followed by Pittsburg in 1950.

In 1952, the League was allotted one player in the State Championship, and a qualifying tournament has been held each year for this purpose. Another tournament has been held each year for the individual championship.

Team matches are held during the fall and early spring. Permanent possession of a trophy is awarded after it has been won three times. San Jose retired the original trophy in 1954, and holds the first leg on the next one. Each club plays a schedule of six matches, for which they must travel a total of 400-800 miles during the season.

The 1955 individual champion is P. D. Smith of Fresno. M. O. Meyer of Sacramento qualified for the 1954 State Championship.

The President and acting Secretary of the League is Michael Hailparn, 727 Ferger Ave., Fresno.

SAN JOSE CHESS CLUB - by William T. Adams.

The San Jose "Y" Chess Club was organized in 1943 mainly through the efforts of Andrew Buschine. From its inception it has always been a part of the YMCA in San Jose. All members of the "Y" are privileged to play chess with the group and participate in its activities. As a necessary corollary to this, it follows that all chess club members must belong to the YMCA. Annual dues are a mere five dollars, and the chess club itself collects no dues whatever.

The first contacts with other clubs resulted in a home and home team match with the strong Russian Chess club of San Francisco in 1945-46. Each club won on its home grounds.

In 1947 and 1948 San Jose entered a "B" team in the Bay Area Chess League, but memory and present records do not reveal the results. At any rate the club was dissatisfied with its membership in the Bay Area League and decided to change leagues. It joined the Central California Chess League in 1949 and its first year of competition resulted in second place behind Modesto, the winner.





San Jose "Y" Chess Team

1955 Champions of Central California Chess League

Left to right: Standing: O'Shaughnessy, Chapman, Foley, Havill,  
Adams, Mueller.  
Sitting: Kalnins, Van Hooser, Kimball, Lutz,  
Daugherty.

Then the San Jose team really hit its stride: In the next five years it won four times and came in second to Sacramento once. At present it is the league champion, holding the first leg on a new cup.

The individual club champions have been Janis Kalnins (once), George Kirby (once), Jerry B. Slavich (once), and William T. Adams (six times). The latter is present club champion.

Officers of the San Jose "Y" Chess Club are: President, George Van Hooser, 1430 Norman Ave., San Jose, Calif.; Secretary-Treasurer, Howard O'Shaughnessy, 1284 Almaden Ave., San Jose; Team Captain, Prof. Lyman Daugherty, 14843 Nelson Way, Los Gatos.



CAPITAL CITY CHESS CLUB - SACRAMENTO - by Neil T. Austin.

In 1934, a group of State employees formed the California State Employees Association Chess Club. It was soon recognized that membership must be open to more than a small group, and in 1935 the present club was formed.

The club has been active in California chess affairs for several years. It was instrumental in the formation of the Central California Chess League in 1948, and in seven seasons of play has won the League championship twice and been runner-up three times.

The 1955 Club champion is Ojars A. Celle, who was also winner of the 1954 Sacramento City Championship, an event sponsored by the club. Other members well known in California chess circles are M.O. Meyer and J.B. Gee.

Weekly meetings are held at the Turnverein Hall, J Street at 34th Street, Wednesday at 8 P.M. Correspondence should be addressed to J.B. Gee, 5318 Callister Ave., Sacramento 19.

OAKDALE CHESS CLUB - by Leonard Krogness.

The Oakdale Chess Club has started its sixth year with twenty-four active players including two of the six charter members, C. J. Smith and Scott Sampson. With enthusiasm running high this promises to be a good year. Officers elected for 1955 include: Harold Blickenstaff, President; Robert Corporon, Vice President; Ed Sai, Secretary-Treasurer; and C. J. Smith, Tournament Director.

The Oakdale Chess Club is continuing to meet regularly throughout the summer in Tullock Hall, corner of F and First Streets, every Monday at 7:30 P.M. Here the club has excellent facilities including chairs and tables for forty-eight players and an area capable of accommodating two hundred players. Since Oakdale has these facilities and is also the geographic center of the Central California Chess League many of the league meetings are held here.

Aside from regular league play and regular meetings, this year's activities have included the annual club knock-out tournament won this year by Harold Blickenstaff, and return matches with Jamestown.



Fresno Chess Club

Seated: John Hastings, William Shirey, Leo Legler,  
Otto Maschke, Mark Phetteplace.

Standing: Elmer Achterberg, Tom Fries, Roy Mc  
Cullough, Robert Garabedian, Robert Baker,  
Robert Clarke, Robert Mitchell.

Not present: Mike Hailparn, Phil Smith, Chris  
Fotias.



FRESNO CHESS CLUB - by R. L. Garabedian.

The Fresno Chess Club had its birth some eight years ago, and has been flourishing ever since. Currently we have 36 active members, and an abnormal amount of semi-active members. We had a turnout of 27 members for our last tournament.

The Fresno Chess Club is the southernmost member of the Central California Chess League, and usually finishes second or third. So far we have never captured that elusive first place. But next year....

In addition to our regular League matches, we recently started a 10-year series with the Bakersfield Chess Club — the winner of the best two out of three receiving possession of a magnificent trophy for the year. Last year, Fresno won in a very close and well-played series of matches.

Our current project is a "Juniors" club, which is open to all youngsters in junior high school and below. The first "Junior Championship," in which 23 players were entered, was won by Jimmy Wood. At the present time, there are 31 juniors meeting every Sunday for instruction and ladder competition.

Despite our relative isolation from the main chess centers of California, Los Angeles and San Francisco, many of our players are active in State-wide chess organizations. We also boast of three of the better players in the League: Phil Smith, who is also League Champion, Mike Hailparn, and Tom Fries.

Our officers for the year, who also played important roles in obtaining the 1955 California Open Championship to be held in Fresno, September 3-5, are: Robert Baker, President; Tom Fries, Vice President and Tournament Director; John Hastings, Treasurer; William Shirey, Secretary; and Robert Garabedian, Librarian.

The Fresno Chess Club meets twice a week at Hart's restaurant every Monday and Thursday.



1955 Officials of the San Francisco Bay Area Chess League

Left to right: Guthrie McClain, President; Vladimir Pafnutieff, Vice President; Robert E. Burger, Secretary-Treasurer.  
(Henry Gross, Tournament Director, missing.)

SAN FRANCISCO BAY AREA CHESS LEAGUE

The S.F. Bay Area league has been in existence since the 1920s, but was not formally organized until 1947-48. The first activities were 7-man team matches between the Mechanics' Institute, University of California, Oakland, Berkeley, Castle and Russian clubs, and larger team matches, 20-30 boards, between Oakland and Berkeley and San Francisco and East Bay. Individual tournaments came later. At present the League conducts team matches in "A" and "B" divisions, currently having six teams in each division, the annual San Francisco vs. East Bay team match (28 boards in 1955), and stages the Northern California Championship - State championship preliminaries and the San Francisco City Championship, for individuals.

There are nine clubs in the league: Mechanics' Institute, Golden Gate, Castle, University of California, Oakland, Russian, Palo Alto, Kings and Alameda. Golden Gate was the 1955 "A" winner. Mechanics' Institute won in the "B" division.



MECHANICS' INSTITUTE CHESS & CHECKER CLUB

Probably the oldest chess and checker club in continuous existence in the nation, the Mechanics' Institute this year is celebrating its 100th anniversary. The institute was organized on December 11, 1854, and in June, 1855, was established in a \$25-a-month room in the Express Building at the corner of Montgomery and California streets. Due to gifts and bequests to its endowment fund, various activities such as the old Industrial Fairs, and enhancement from investments, the institute now owns its own building at 57 Post Street and has a substantial invested capital. The library has 155,000 volumes.

The institute now has some 5,000 members, all of whom are entitled to the use of the chess and checker room. Dues are \$6 per year, having been unchanged since 1857. It is officially estimated that the average cost of the services rendered to a member of the institute is \$26 per year, the difference between \$6 and \$26 being borne by the endowment fund.

The chess club was started in the institute's early days. It is one of the best appointed clubs in the nation, and occupies commodious quarters on the fourth floor of the Mechanics' Institute Building. The club has a long and glorious history. Among the great masters who have given exhibitions at the institute are J. H. Zukertort, Harry N. Pillsbury, Dr. Emanuel Lasker, Geza Maroczy, Frank J. Marshall, J. R. Capablanca, Dr. Alexander Alekhine, Dr. Max Euwe and Svetozar Gligoric. Among the notable institute club masters is A. J. Fink, who is an internationally known problemist and who has been State Champion several times. Dr. W. R. Lovegrove, a keen amateur with some experience against masters during his student days in Europe, now retired, caused quite a stir in the club-rooms one day in the 1900s when he won a match game from H. N. Pillsbury. Pillsbury thought the doctor was lucky, and analyzed all night; the next day Lovegrove demolished the analysis. Pillsbury analyzed all that afternoon; that night Lovegrove again demolished his analysis! In 1929 Alexander Alekhine suffered an unheard-of number of reverses in a simultaneous exhibition; at the conclusion of his tour an European journalist asked him where he found the strongest opposition. "In San Francisco, in a place called the Mechanics' Institute," Alekhine replied.

The club has 30 chess tables of solid oak with inlaid boards of quarter-inch maple and black walnut squares. Massive chessmen of carved lignum vitae were custom-made to the club's own specification. The institute has been a haven for chessplayers passing through the city. Visitors are always welcome. The club is open every day in the year from 9 A.M. to 10 P.M. and 11 P.M. on Saturdays. There are always opponents to be found (and expert kibitzers).





Mechanics' Institute Clubroom Scene

Mechanics' Institute Chess Club

Seated: Charles Svalberg, A. B. Stamer (Director),  
Charles Bagby, Earl Pruner.

Standing: Karl Bopp, William G. Addison, Dmitri  
Poliakoff.







Golden Gate Chess Club

Left to right: Imre König, James Cook, Herbert Dasteel, Jr., Jerry Ets-Hoken, David Peizer, Edward Logwood, Norman Nielsen, Carroll Capps, Gilbert Ramirez, Ben Zeiler, Herbert Holden, Ted Eisenstadt, Robert Konkel, Henry Gross, Herbert Rosenbaum, Godfrey Lutz, Curtis Wilson, Eugene Lien, Willard Sprague, Edvins Simanis, Carl Huneke, Les Talcott, Henry King, William Addison, Russell Freeman, Dr. Kenneth M. Colby, Walter Pafnutieff.

Golden Gate "A" Team

Left to right: Walter Pafnutieff, Dr. Kenneth Colby, Carroll Capps, Robert Konkel, Imre König, David Peizer, Henry Gross.





GOLDEN GATE CHESS CLUB - by Henry Gross.

The Golden Gate club maintains permanent headquarters on the ground floor of the Hotel Somerton, 440 Geary St., in downtown San Francisco. Tuesday is meeting night. Club facilities are also available at any other time. There are usually 12 to 15 games in progress on Tuesdays, and some form of chess activity on almost every night. There is no initiation fee. Dues are \$1 per month. Officers are Henry Gross, President, and Godfrey Lutz, Secretary-Treasurer. Visiting masters are always assured of a warm reception, and out-of-town chessplayers are always welcome to drop in for an off-hand game.

The club was organized in the fall of 1951 behind the motivating force of that indefatigable organizer, George Koltanowski. It failed to fold up and die when George withdrew his support to work with the Chess Friends, and on the contrary it constantly grew both in membership and prestige. In 1952 the "A" team finished 4th in the league, in 1953 second, and in 1954 and 1955 we won the championship. Our "B" team won in 1952, tied for third in 1953, was second in 1954 and tied for 4th this year. The annual championship is perhaps the most competitive in the area. No less than 20 players have participated each year. Handsome trophies and cash prizes are awarded. The keenness of the competition is best illustrated by the fact that the 1954 championship, a round robin, was won by Bob Currie, 16-3, William Addison, Henry Gross and Robert Konkol tied for 2nd, 3rd and 4th, 15½-3½, while Jim Schmitt, who took second in the 1954 State Open was 6th.

The club stresses the youth movement in chess, and five members of the Kings team are also members of the Golden Gate club. The Kings team is composed of high school boys and their strength can be seen from the fact that they finished second in the "B" division of the S.F. Bay Area league this year. The main purpose of the club is to furnish players who are serious about improving the quality of their play the facilities, organization, incentive and instruction to do just that. Not too much effort is made to recruit members who do not actively participate in the activities sponsored by the club. The club does not wish to be regarded as merely a gathering place for those interested in "beer and skittles" (although all types of food and refreshment are served in the club by the restaurant and bar located in the hotel). This policy has resulted in a membership of a generally high level of playing strength. The Reshevsky simultaneous in 1954 is a case in point; his only losses in California were at Golden Gate, where he lost 4 and drew 5 out of 33 games.

No article about the Golden Gate club would be complete without mentioning the famous international master, author and all around good guy, Imre König. He not only plays No. 1 board for our team, but unselfishly coaches players and gives private and group lessons.





#### CASTLE CHESS CLUB

Seated: Neilen Hultgren, Fred Byron, Wade Hendricks, Glen Hultgren, Guthrie McClain.

Standing: Paul Traum, Bob Burger, Fred Christensen, Neil Falconer, Henry Gross, Ralph Hultgren.

The Castle Chess Club recently celebrated its 25th birthday, having been formed in 1929. The club originally was composed of Oakland players, spread later to Berkeley, and now has a few San Francisco members. It has developed over the years into a University of California alumni group. The U.C. has always had a strong chess club, and those players who remained in the East Bay after graduation tended to look to the Castle club for their chess competition. The club meets in the homes of the members, and is therefore restricted in the total number of members to a dozen or so.

The Castle club has always been a contender for the San Francisco Bay area team title, and has been noted for its willingness to travel considerable distances to play other teams. One of its greatest achievements was traveling nearly 400 miles to Santa Barbara in 1941, when the North vs. South match was called off, and defeating the Los Angeles Chess & Checker Club by the convincing score of  $9\frac{1}{2}-2\frac{1}{2}$ . Again, in 1951, Castle, having won the S.F. league championship, played the Santa Monica team, champions of the Los Angeles County League, at San Luis Obispo during the North-South match, and scored a 6-0 shutout. All the California Chess Reporter editors from the Bay Area are Castle members.



### RUSSIAN CHESS CLUB

The Russian club as a chess power in San Francisco dates back to 1931. With such strong players as Vladimir Pafnutieff, Dmitri Poliakoff, Nicolai Preobrajensky, Boris Popoff and Michael Rudniansky, the Russians are perennial threats to the other S.F. Bay Area teams. The late Peter V. Prokoodin, who founded the club and served as its president and team captain until his death in 1954, left a big gap in the club, so great a void that the Russians were not able to field an "A" team in 1955. Consequently, Pafnutieff played on the Golden Gate team, Poliakoff on the Mechanics' Institute, and the others were inactive. Prokoodin's successor as team captain is Anatole Palmin, who led the "B" team to third place in 1955. The players: Al Palmin, Wilber Leeds, C. Federoff, P. Andreef, Helen Ivanoff, A. Tokmakoff, N. Beloff, D. Shishkin and A. Droujinin. The club meets at the Russian Center, 2450 Sutter St., on Fridays.

### OAKLAND CHESS & CHECKER CLUB

The Oakland club meets daily at 263 - 12th Street, Oakland. In addition to chess and checkers, the Oakland club features anagrams, bridge and other games. Oakland fielded an "A" team in 1955 consisting of Carl Bergman, Al Loera, Larry Ledgerwood, Charles Sedlack, Chester Stamer, Robert Trenberth, Russell Freeman, Eugene Lien and Ray Cuneo, and a "B" team composed mostly of juniors.

### UNIVERSITY OF CALIFORNIA

The U.C. Chess Club dates back longer than any Bay Area club except the Mechanics' Institute. The club meets in Stephens Union on the campus. The "A" team in 1955, composed of Valdemars Zemitis, Bob Burger, Bob Currie, Roger Smook, Neilen Hultgren, Mark Eucher, W. Sprague, E. Simanis and Jim Fredgren, looked good on paper but finished fourth in league competition.

### PALO ALTO

The Palo Alto club meets at the City Recreation Center on Tuesdays. Palo Alto won the "B" division title in 1954 and elected to join the "A" division in 1955. The team failed to win a match, but decided to enter "A" in 1956 and to do better. The players: Jack Kliger, Juris Petriceks, W. Shugert, G. Latta, Ken Chambers, E. T. Dana, Harold Edelstein, Frank Morsman and Victor Ricketts.

### KINGS CHESS CLUB

Made up of a group of junior members of the Golden Gate club, the Kings are probably northern California's answer to the strong juniors of Long Beach. The Kings are mostly in the 14-16 age group. The team was a very close second in Division "B" in 1955. The players: Gil Ramirez, Ted Eisenstadt, B. Zeiler, E. Logwood, Herbert Holden, A. Nalivaiko, A. Chris, S. Gould, U. Kapostins and B. Gould.





#### Alameda Chess Club

Seated: Lockerby, Holman, Arriola, Ogilvie, Talcott, Osternig.  
 Standing: Leonard, Minchaca, McGinley, Schulman, Sobol, Cunningham.

#### ALAMEDA CHESS CLUB - by Dallace W. Ogilvie.

The present club was formed by a group of local enthusiasts who assembled in answer to an advertisement which appeared in the local newspaper. This group met at the home of Reginald and Blanca Saunders on February 22, 1950. The club was destined to thrive under the impetus imparted that first night.

The second and all subsequent meetings occurred at the McKinley Park recreation building. This building was secured, rent free, one night each week from eight 'til midnight. The building is warm, well lighted and fosters a congenial atmosphere. Attendance the first year averaged from fourteen to sixteen persons, ranging from novice to expert. Dues were 50¢ per month and the club soon had sufficient funds in the treasury to defray the cost of half-a-dozen sets of chessmen. The club prospered and dues were suspended after the second year of the club's rejuvenation. No dues have been collected for the past three years.



The Alameda Chess Club has had difficulty maintaining interest, and often key personnel have been lost at critical times when strong hands were needed to guide the club through crises. The Saunders left for Chile; P. V. McKee died while President; the club's strongest player, Sam Bean, passed away. In the summer of 1953 only a die-hard core of four attended the meetings regularly.

Fearing that the club would lose the use of the recreation building, the four steady members investigated means of increasing the attendance to a minimum of at least eight steady members. The happy solution: Another chess group, the Staunton Group of east Oakland, was dissatisfied with a ten o'clock curfew placed on it at the school cafeteria meeting place it was using. The two clubs combined forces for the mutual benefit of both, under the name of the Alameda Chess Club.

The high point of club renown was reached in 1954 when the club sent seven members to the 50-board simultaneous exhibition given by Sammy Reshevsky in San Francisco. Of the total of four draws and no losses scored against Sammy, three draws were scored by men from the club. Those drawing were Talcott, Fontan and Ogilvie.

Our intrepid club flexed its muscles and entered the 1954 S.F. Bay Area Chess League. The result was disastrous and Alameda finished last, with a single team win in the last round its only saving grace. Play was in the "B" division, as "A" players were mighty scarce. The combined club also fielded a team in the Chess Friends of Northern California league, and it fared somewhat better. The 1955 season saw considerable improvement, with two matches won over larger clubs in the Bay Area league.

The club champion is Les Talcott, but he is hard-pressed for honors by Fontan, Lockerby, Bristow and Kelly. Officers are:

Les Talcott, President;

John Bristow, Secretary;

Dal Ogilvie, Treasurer.

The Alameda Chess Club meets each Thursday night at 8 o'clock at the McKinley Park recreation building and play continues until midnight. VISITORS ARE WELCOME. McKinley Park is located on Buena Vista Avenue about four blocks north of Park Street in Alameda.





Alameda Chess Club

Left to right: Schulman, Leonard, Sobol, Lockerby, Talcott, McGinley, Arriola, Cunningham, Osternig, Holman, Minchaca, Ogilvie.  
Regular members missing: Bristow, Fontan, Kelly, Momono.

Alameda Chess Club "B" League Team

Left to right: Talcott, McGinley, Lockerby, Arriola, Ogilvie, Osternig. Players missing: Fontan, Kelly, Rutherford, Petersen, Sobol, Leonard.







#### Point Loma Chess Club

Foreground: (Mrs.) Millicent Lovejoy, Newman Wade, Keith Gregory, Dr. Douglas Duke, Todd Smith, William E. Aiken, Theron M. Lambert.  
 Background: Dudley H. Hosea, Roger Rumpel, Roger Dale (seated), Dr. L. Dean Gibson, David S. Folsom, Comm. Dayton Brown, Jim McClellan, John Alexander, David C. Andre, Jerry Hunter, Donald H. Robey.

SAN DIEGO AREA: Chess is booming in the San Diego Area. In addition to the recently-formed Industrial League, comprising teams from Naval Electronics Lab, La Mesa, Convair, Point Loma, Ryan Aeronautical, Rohr Aircraft and San Diego Gas & Electric, there are clubs in downtown San Diego and in the many adjacent cities. The Naval Electronics team won the 1955 Industrial League team tournament  $8\frac{1}{2}$ - $\frac{1}{2}$ . Individual high scorers were: J. P. McClellan (Point Loma) 15-3, S. C. Spade (La Mesa) 13-5, and R. Rempel (Naval Electronics Lab)  $11\frac{1}{2}$ - $6\frac{1}{2}$ .



## OTHER GROUPS

TRI-COUNTY: Players in the eastern part of Los Angeles County and adjacent Riverside and San Bernardino counties have formed a loose league composed of clubs in Pomona, Riverside, Covina and neighboring towns. The most active club at the present time meets on Monday nights in the office of J. E. Kirk, realtor of Pomona. Ed Eubanks is president of the club and players gather there from Fontana, Elsinore and Riverside, as well as Pomona. From time to time players gather in Riverside under the auspices of Chester N. Fuglie, 3892 Elmwood Court, or Charles B. Walker, 9731 Sharon Ave., Arlington (a suburb of Riverside). The California State Chess Federation director for the Tri-County area is George A. Hunnex, P. O. Box 211, Elsinore.

REDWOOD EMPIRE CHESS LEAGUE: North of San Francisco, across the Golden Gate Bridge, there are a number of rapidly-growing suburban residential areas which have numerous small chess clubs. Since the construction of the Golden Gate Bridge in 1939, and also due in no small part to the currently-building San Rafael-Richmond bridge, the formerly sparsely-populated Marin-Napa-Sonoma-Solano area is seeing the same rapid growth that came to the San Francisco and Los Angeles metropolitan areas in recent years.

The most prominent clubs in the area are in Vallejo, Santa Rosa, and Petaluma. The Redwood Empire League owes its start to George Koltanowski, who first settled in Santa Rosa when he came to California from the east in 1947-48. Kolty was quick to start a chess club and a California chess magazine, California Chess News (later Chess Digest). (Chess Digest was in a way responsible for The California Chess Reporter, for when Chess Digest failed, in 1951, The Reporter was formed in order to fill the vacuum.)

The principal activity of the league is the annual team tournament. There is no regular individual championship, but from time to time short "opens" have been successful. The annual Valley of the Moon chess festival at Sonoma (to be held this year on August 15) always attracts competitors from all over the state. An annual fixture is a year-end banquet, usually held in a roadhouse near Santa Rosa. Some high old times are reported. When Dr. Max Euwe visited San Francisco several years ago, he spent two or three days in the Santa Rosa area and was honor guest at the annual banquet.

The CSCF director for the league is Gunnar Rasmussen, 1015 Henry Court, Vallejo.



CHESS FRIENDS

One of the most interesting chess organizations anywhere is the group known under its northern and southern branch titles as "Chess Friends of Northern California, Inc." and "Chess Friends of Southern California, Inc." The northern branch was formed first, some five years ago, and the southern branch was formed last year.

Chess Friends overlap the California State Chess Federation to some extent, but the great majority of Friends take chess a bit less seriously than most players in the State Federation. Many Friends are professional men and other persons with busy schedules. The short hours of play in Chess Friends events permit such persons to keep up an interest in competitive chess without devoting the long hours to study and practice necessary to championship chess.

Perhaps the greatest difference between Chess Friends and the CSCF is that the tournament and match games conducted by the Friends are usually played at the rate of 30 moves per hour, or even faster, and sometimes are limited to a total elapsed time of two or three hours per game. Clocks are not always required. Also, most individual tournaments are played off in one day or in two days, under the Swiss System. This makes for large tournaments, for many more players can turn out for a single day or for a single week end than can play daily for a week or two.

Just how many Chess Friends there are, no one knows. When George Koltanowski puts on a special exhibition, such as his recent 110-board simultaneous at the Biltmore in Los Angeles or his rapid-transit blindfold exhibition a few years back at the Marines' Memorial in San Francisco, literally thousands of spectators and players show up. Many join Chess Friends. During the rest of the time, there are dozens of team tournaments going on, periodic chess festivals, and a big "open" each year in San Francisco and Los Angeles.

The guiding light and principal cohesive force in Chess Friends is international master George Koltanowski. One of the few masters able to make a living from chess, Koltly always has a lot of irons in the fire. He conducts a daily chess column in the San Francisco Chronicle, one of the few daily columns anywhere, weekly columns in several suburban newspapers, and a column in Fortnight Magazine. He appears on television and radio, gives blindfold and regular simultaneous exhibitions all over the nation, writes eye-witness reports on international events for Chess Review and other magazines, and is the author of nearly a dozen chess books. He conducts games-by-mail (500 at one time) in The Chronicle and other papers.



Because of the daily column in The Chronicle (and, before its failure last year, in the Los Angeles Daily News), Chess Friends are notified promptly of coming events and kept posted on news of their organizations. Extensive mailing lists are also kept, and when a community puts on a Chess Festival there is widespread publicity. A typical festival consists of an exhibition by Koltanowski, graded tournaments, problem solving and offhand play, and is staged in a park or picnic area. For the tournaments, players are separated into four-man groups in grades A, B and C. Three games are played, usually between 11 A.M. and 4 P.M. The winner in each grade is selected by the judge (Kolty) from among the winners of the four-man sections. Trophies are given to the A, B and C winners, to the players traveling the greatest distance, and to the club with the best score.

Chess Friends secretaries are: Northern California, Charles T. McGinley, 2763 Chelsea Drive, Oakland 11; Southern California, Calvin G. Taber, Water & Power Chess Club, 110 South Boylston St., Room 300, Los Angeles. Koltanowski's address is 200 Alhambra St., San Francisco.

\* \* \* \* \*

A WORD ABOUT THIS BOOK: Knowing that visitors to California for the U.S. Open would naturally be interested in organized chess here, the Southern California Chess League proposed a tabulation of information about its member clubs, and was promptly joined by the San Francisco and Central California leagues, making the venture virtually state-wide. Irving Rivise and Kyle Forrest, president and secretary of the Southern California league, are responsible for the largest section of the book. Nancy Roos took the excellent photographs of the southern clubs. Forrest did the actual writing of the southern section. In central and northern California, various club members contributed the writing and photographs, coordinated by Neil Austin of Sacramento for central California and the Editor of The Reporter for the San Francisco area. The information on other groups was provided by the Editor, who also took the photos for the San Francisco area.

The cost of the book was apportioned to each club written up, in proportion to the space taken. Any club inadequately written up or left out entirely has our apology for the omission, but we must point out that such a club neither paid its share nor furnished us the proper material.