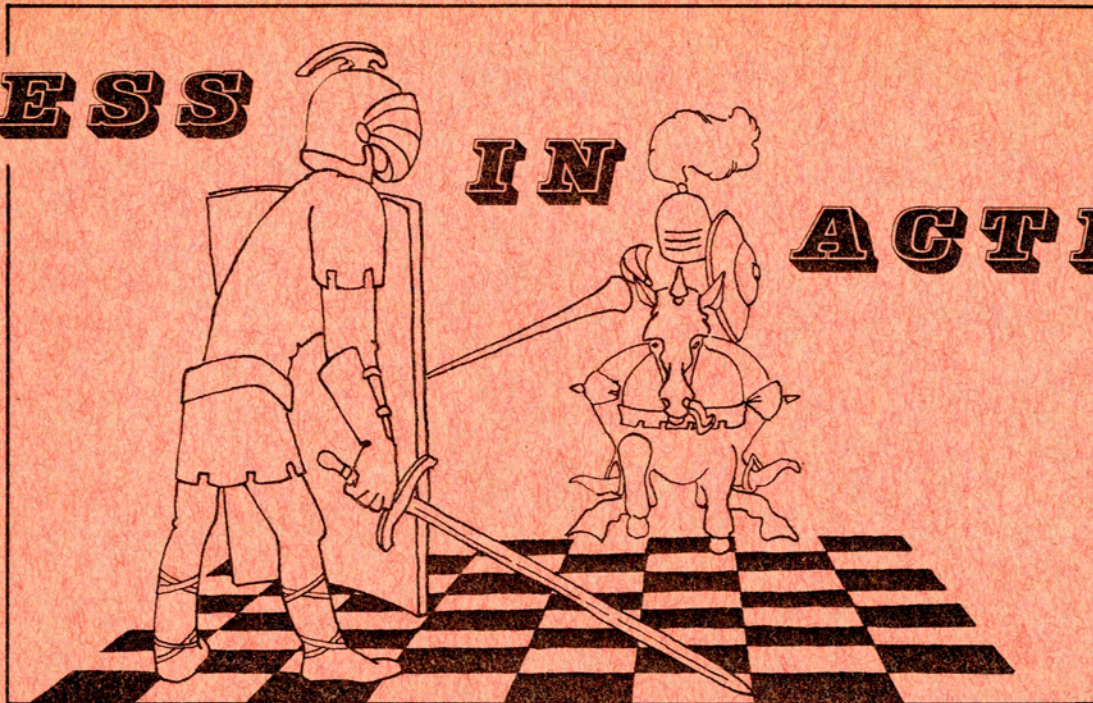


# CHESS

# IN

# ACTION



Published by Chess Friends of Northern California, a Charter Member of  
the United States Chess Federation. Edited by John E. Almond

July - August, 1958

### N STANDS FOR NOTHING

How such a large body of apparently cultured men and women - the Chessplayers of the United States - could come to adopt the letter "N" in place of the perfectly acceptable "Kt", as an abbreviation for the "Knight" is something of a mystery to the writer. True, one letter is better than two in any abbreviation, though the Russians still struggle along with Kp for King, but why choose an N? - a choice that rides roughshod over tradition and ignores both chess history and the etymology of the word "Knight".

Historically, the Knight was a soldier on horseback. Many Chess sets, especially the Chinese and the Florentine, depict the piece as such. Less elaborate sets, such as the Staunton, have reduced the piece to a symbolic horse's head, just as the castled elephant (once a ship!) has been reduced to a castle. We have no argument with such reductions as, in reduction, an elephant's backside looks much the same as a horse's. But I digress. One of the most beautiful modern sets by prize-winning sculptor Peter Ganino, who has cleverly woven sexual symbolism into the designs of the King's and Queen's headpieces, depicts the Knight, not as a horse or horse's head, but as the helmeted head of the Knight, that is, the man who sits on the horse. At any rate, it is clear that there is universal acceptance of the horse or horseman motif.

## N STANDS FOR NOTHING (Continued)

How is the Knight designated in languages other than English?

French	C for Cavalier (horseman). Also note Cheval (horse) and chevalier (knight) also begin with the letter C. It is interesting to note that the French use a word for horseman and not the word "chevalier" for knight.
Spanish	C for Caballo (horse). Also note caballero, horseman.
Portuguese	C for Cavallo (horse). Also note cavaleiro, horseman.
Italian	C for Cavallo (horse)
German	S for Springer (a jumping horse)
Dutch	P for Paard (Horse)

and so on - universal acceptance  
of the word "horse".

Then why should not the English-speaking people adopt the letter "H" for horse or horseman, instead of the ridiculous N which stands for Night, Nothing, or Nonsense. The only words I could find that had any connection with a horse and the initial "N" were Nag and Nosebag! Are we to brand ourselves as a Nation of illiterates? In the main, while there are a few exceptions, mainly among British Chess magazines that have a wide U.S. following, the British have stuck to their "Kt". And, personally, because I still wince when I write or read "N" for Knight, I will continue to order the (cheaper) British editions of chess books with their "Kts".

Feeling that, after a 25 hiatus away from Chess, I might be talking about something that was ancient history or ancient controversy, I asked Mr. Fred K. Wren, the friendly editor of "Chess Life", if he could enlighten me on this subject. He agrees with me that "H" is an obvious substitute but is sorry that I deplore the use of the phonetic "N". Now here we have a clue! Phonetics.

Mr. Wren also gave me some of the arguments in its favor, when it was blessed and adopted by "Chess Review" some 20 years ago. Apparently there was a grave tendency on the part of printers to transpose "Kt" and "K". "H", according to Mr. Wren, was not given serious consideration due to its similarity to both "K" and "R" while "N" was supposed to be distinctive. Now, to my way of thinking, there is almost no difference to the initials "H" and "N". In fact, "N" looks a lot more like an "R" than an "H" does. So, I would still think that the letter "H" should be adopted and the present "N" scrapped.

I am pleased to find I am apparently not the only one who thinks this. Mr. O. Southard, Editor of "Leaves of Chess", the magazine I would be proudest to be Editor, uses "Kt" in the descriptive system, "H" in the algebraic system.. I am sure you will never see "Leaves of Chess" using "N".

continued somewhere else.....



# SONOMA VALLEY OF THE MOON



Wonderful weather brought out the Chess fans at Sonoma, and the Eighth Annual Chess Festival attendance broke all previous records with 220 players ! A group of five players flew in from Selma, California, to participate in the exhibition given by Jerry Spann, President of the United States Chess Federation (and so handsome all the women were swooning). The trophies for coming the furthest (farthest ?) distance were won by Embree Reynolds of Marysville, and Mr. and Mrs. E. Burlingame of Phoenix. The Carroll Ogden Group of San Francisco won the trophy for the greatest number of participants. Mike Hoogasian of San Fran. won the Junior's trophy and the Women's title went to Mrs. M. Bartholomew of Hayward. The Sonoma Cup was won by Miss Marian Brackenridge of Sonoma. Other results were:

A Division: Ostap Bender, Sacramento; B Division: Robert Oberg, Richmond; C Division Richard Tally, San Francisco. The Redwood City Chess Club won the General Dean Trophy for making the best score for four representatives. Group winners (each receiving book prizes) were: Mike Hoogasian, S.F.; Kris Kraft, Mill Valley; Mrs. M. Bartholomew, Hayward, Mrs W.M. Bettencourt, Pedro Valley, Norman Wood, Santa Rosa; R. Thacker, Richmond; Gunner Rasmussen, Vallejo; O Bender, Sacramento; J. Packard, Vallejo; M. Foldstein, Richmond; Robert Turner, Berkeley, Anos Knack, Redwood City, George Fouke, S.F., James Schmerl (our new Problem Editor, Hurrh!) Piedmont; Dick Tally, S.F.; Dr. Glen W. Kent, Walnut Creek; Lars Lunn, Stanford; Ben Wong, S.F.; Eric Brent, S.F.; William Gowan, Mill Valley; Henry Holmes, Oakland; Richard Shorman, Oakland; Michael Ewell, S.F.; Wm. Koenig, Oakland; Larry O'Doon, Vallejo; E. Fish, S.F.; Robert Oberg, Richmond; Jim Gough, S.F.; Dr. E. Schnoor, Redwood City; Henry King, S.F.; L.E. Meyer, Potter Valley; Chas. Loveland, Fairfax; Ron Morris, San Leandro; Jules Kalisch, S.F.; R. Roslin, Palo Alto; W. Seavey, Corte Madera; Robert Hughes, Los Altos; David Bartholomew, Palo Alto; J. Heynemann, Belvedere; Warren Clifford, S.F.; Frank Lynch, S.F.; Peter Cleghorn, Redwood City; Noel Baggett, San Bruno; Robert Dickin-son, Redwood City; L. Tullis, S. F.; R. Allen, San Carlos; Leroy Turner, Concord; Frank Weinberg, Oakland; Vic. Lombardi, S.F.; Don Sutherland, S.F.; Michael Nattenberg, Berkeley, Dr. L. Dickstein, Oakland. And apologies to all whose names we have spelled wrongly.

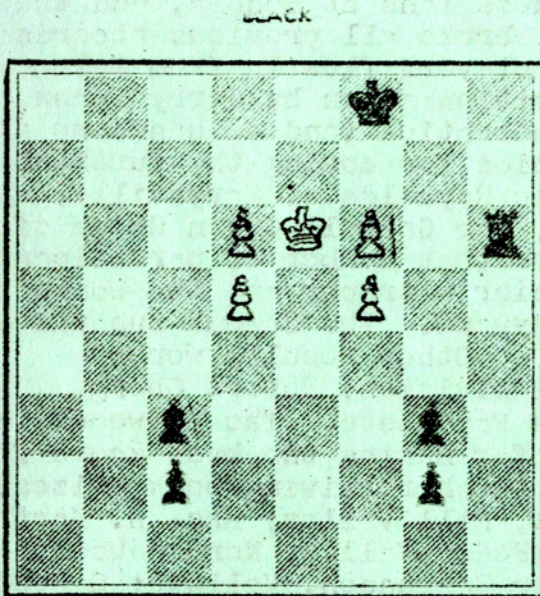
Well, we held up the magazine until we had this information and now we find we have so little extra space to tell you what a wonderful time everyone had. The only criticism we heard was that time was so short and everything was so rushed that it ought to be made a two day or even a week's affair. A criticism with which we agree as we note that quite a minor British Chess Tournament was recently held at Whitby, England, and lasted a full two weeks. What is wrong with the way we live in California that we cannot do the same thing????

There is only room to say that the event was its usual success and that the only improvement could be that it should be bigger and longer.

→ COME AGAIN NEXT YEAR!

## CHESS CHIT CHAT

George Koltanowski gave me the following interesting problem. Black to move and mate in ten.



Now I did not do more than make a mental note of it at the time and it is possible that the position is not quite correct. However the interesting point is that it is the longest Chess Problem I have encountered. Does anyone know of a problem longer than a ten-mover? If so, kindly send it along. Also, in working out the problem shown above, it occurred to me that it would not be too difficult to work backwards a bit and expand it into a twelve-mover or even a fifteen-mover. I will give a small prize for the best extension of the problem.

\*\*\*\*\*

Have you heard the story of Oscar Ughnik who beat all-comers in a Russian Chess Tournament held in a horse-racing stronghold? He failed to pass the saliva test and was disqualified - Benzadrine in his Raspberry Soda!!!

\*\*\*\*\*

Did you know that, at the end of the 15th Century, each pawn had its own special name? These were:

KR Pawn	Feasant
KN Pawn	Blacksmith
KB Pawn	Notary
K Pawn	Merchant
Q Pawn	Doctor
QB Pawn	Innkeeper
QN Pawn	Policeman
QR Pawn	Hobo

A chessplaying friend uses the following nomenclature for his pawns. The initial letters denote the file in the algebraic notation:

### Queen's Pawns

- Accountant
- Beauty specialist
- Cook
- Dishwasher

### King's Pawns

- Escutcheon-bearer
- Footman
- Gamekeeper
- Horsekeeper

The ingenuity here is that the pawns on the Queen's side pertain to a Queen's activities, while the pawns on the King's side pertain to a King's activities.

\*\*\*\*\*

The following poem has been received from a reader:

### ODE TO CAISSA

Gather round fellow members  
of C.F.N.C.  
To hear a success story that's  
happening to me.  
While we've just lost the house,  
the mortgage was due.  
You can't keep your eye on a  
star and do otherthings too.  
The Finance Company rues the day,  
that wasn't too far  
When it sent out the Sheriff  
to seize our new car.

(continued next page)

CHES CHIT CHAT  
(continued)

Ode to Caissa (continued)

The tires were shot, things were  
missing quite a few.  
They couldn't start it, cause the  
engine was too.  
Our friends are all gone, the boss  
was a slob  
He had no sense of humor if I was  
late on the job.  
But the crux of the story, I'm  
sure you'll agree  
I'll be top of the Chess Ladder  
before I'm 93!

A. C. Player

-\*-\*-\*-\*-\*-\*-\*

We were somewhat amused and  
startled to read on page 125 of  
"The California Chess Reporter"  
that eligibility for the U.S.  
Junior Championship is "Born on  
or after July 9, 1958. How young  
do people start playing Chess  
these days?

xxxxxxxxxxxxxxxxxxxx

We have recently subscribed to  
a wonderful new Chess magazine  
called "LEAVES OF CHESS". It is  
quite different to anything else  
now published for woodpushers. It  
only costs \$1.00 a year and you can  
get all the back numbers for another  
buck. If you can appreciate the  
finer things of life, send off now  
to: LEAVES OF CHESS, Box 158,  
Cathedral Station, New York 25.

\*\*\*\*\*

We are apparently making some  
small dent on the Chess World as  
the July 5 edition of "Chess Life"  
starts a "Swap Shop" section and  
very kindly gives credit to Chess  
in Action for originating the idea.

\*\*\*\*\*

We hear from George K. that,  
on Wednesday, July 2nd, he went

to the United Air Lines, Inter-  
national Air Port, South San Fran-  
cisco, and helped a group there  
form a new Chess Club. The new  
group are most enthusiastic and  
are looking forward to entering a  
team or teams in the Winter League.  
It was unanimously voted that each  
member of the club join Chess Friends  
of Northern California. The officers  
are Roger Dickinson, President;  
Victor Lombardi, V-P.; W. Potter,  
Sect.-Treasurer. We heartily  
welcome this new group to our organ-  
ization.

\*\*\*\*\*

We also have news of a new and  
somewhat different Chess Club being  
started in Berkeley with the name of  
The Hades Chess Club. Copies of  
the amusing brochure may be obtained  
from John Mephistopheles Fitz,  
1130 Spruce Street, Berkeley, Calif.  
All members will also be members of  
"Chess Fiends of Northern California"

\*\*\*\*\*

The Carroll Ogden Chess Club  
completed its summer tournament with  
close to 50 participants. The Final  
results were:

- Group A Winner (trophy) J. Kalisch
- B Winner (trophy) F. Lynch
- Second (trophy) C. Butler
- Books also went to W. Crabtree,  
P. Vayssie, and E. Jaruzel.
- Group C Winner (trophy) J. Johnson
- Second (trophy) Dr. J. Tobin
- A book went to I. Warner.

The Carroll Ogden Chess Club  
meets every Thursday night at the  
Marina Junior High School, Bay and  
Fillmore Streets, San Francisco,  
in the cafeteria on the 1st Floor.  
A cordial invitation is extended to  
all Chess players to visit the Club  
when in meeting.

\*\*\*\*\*

CHES CHIT CHAT  
(continued)

The Word "CHESS"

A reader asks if there is any connection between the name of the Goddess of Chess, Caissa, and the French word "caisse, meaning a box or chest? Can anyone answer this?

While on this subject, did you know that the word "chess" also means:-

- (1) One of the floor planks of a pontoon bridge, and
- (2) Any of several brome grasses, especially the wheatfield weed "Bromus Secalms".

\*\*\*\*\*

We are happy to announce that, commencing with the next issue of "Chess in Action", Mr. James Schmerl of 20 Greenbank Avenue, Piedmont 11, California, will be our Problem Editor.

\*\*\*\*\*

MORE NEWS ABOUT GEORGE

Mr. and Mrs. Koltanowski will soon be leaving for the wilds of Minnesota to direct the U.S. Open Chess Championship, after which, he is going to Borger and Houston, Texas, to direct tournaments there. Never a dull moment!

You are also invited to hear a new series of weekly chess programs conducted by George on Station K A F E, Oakland (FM at 98.1 mcs.) These are on Friday evenings at 7.30, beginning September 12th. Improve and enjoy your game. Play against the master. Prizes for points.

\*\*\*\*\*

We have just been delighted to experience some real Old World service, courtesy, and efficiency from Mr. B.H. Wood, of "CHESS", Sutton Coldfield, England that is

an example to all Chess Editors and sellers of chessbooks or chess services. The organization of "CHESS" not only offer you books and equipment at prices far below those prevailing in the U.S. but they also offer you services that are virtually unobtainable on this side of the Atlantic.

For instance, they will repair your ivory chessmen, or replace any missing piece, at modest cost. They will make you a box for your set; they will arrange subscriptions to chess journals published in any language in any country; they will supply you with any odd bits of information (for example, I obtained the address of J.C.Thompson, originator of "The Hippopotamus" opening, from Mr. Wood) and they will do this so promptly and with such courtesy that it is a joy to do business with them. American Chess organizations please note and reply to some of those letters I wrote you three months ago.

\*\*\*\*\*

We have some entrants for the Silver Knight postal tournament (see our last edition) and also the Chess Friends Knock-Out Tourney. We are holding the money until we get a few more entrants. WILL ANYONE WHO WISHES TO PLAY PLEASE LOOK UP OUR LAST EDITION AND SEND IN THEIR ENTRIES RIGHT AWAY. THANKS.

\*\*\*\*\*

Due to technical difficulties in making a water-proof board, the Underwater Chess Tournament has been postponed until late August or early September. The board, made of aluminum & galvanized steel is now ready. Those who have expressed interest will be notified of the exact time and place.

\*\*\*\*\*

LETTERS TO THE EDITOR

Dear Sir:

Did you obtain your previous editing experience working for "MAD" ?

C.F.N.C.

Gentlemen:

The strength of our Editor lies in his lust to expand. He is a statically weak Editor who, however, notwithstanding his weakness, is imbued with dynamic strength.

Nimzo-Fan

\*\*\*\*\*

MOTHER GOOSE CHESS

The following game, played in the British Championship at Stratford-on-Avon, is interestingly annotated by Dr. J. Schumer with extracts from Nursery Rhymes.

W. Winter White H.B. Uber Black

- 1. P - Q4 P - Q4 Tweedledum and tweedledee resolved to have a battle;..
2. N - KB3 N - KB3
3. P - B4 P - B3
4. N - B3 B - B4 This is the priest all shaven and shorn.
5. Q - N3 Q - N3 And this is the maiden all forlorn
6. P - B5 There came a big spider And sat down beside her,
7. B - B4 And frightened Miss Muffot away.
8. P - K3 N - R4 He went to shoot a wild duck But wild duck flew away. Says Simon, "I can't hit him, Because he will not stay."
9. B x N R x B

This is the cat that killed the rat

That ate the malt That lay in the house that Jack built.

- 10. Q - R4 N - KB3 G for the gee-gees which run up and down
11. Q x RP Taffy was a thief; Taffy came to my house And stole a piece of beef.
12. Q - R4 He took up his hat and wished them good-night.
13. N - R4 B - K3
14. B - Q3 B - B2
15. Castles KR P-KN3
16. P - B4 B - N2
17. P - B5 P - KN4
18. N - B3 Castles
19. Q - B2 B - R3 There was a bee sat on a wall; He said he could hum and that was all.
20. P - KN4 Birds of a feather flock together.
21. P - K4 P x P
22. N x KP R - Q1
23. B - B4 B x B
24. Q x B N - B1
25. QR - K1 R - Q2
26. R - K2 Q - B2
27. P - KR4 P x P
28. P - N5 B x P Three little nigger boys walking in the Zoo;
29. N(B3) X B P x N
30. N x P A big bear hugged one and then there were two.
31. R - N2 R - Q4
32. P x P P - K3
33. R - B7 N - N3
34. R x P Ch. Q - Q1 K - K1

Continued somewhere else.....

MOTHER GOOSE CHESs continued

But where I am I must be  
 And where I would be I cannot.

- 35. R - R8 Ch. N X R
- 36. N - B7 dis. check.

There was a horse going to the mill  
 When he went on, he stood not still.

K - B1

- 37. N x Q

A man stretched his mouth to its utmost extent  
 And down at one gulp, house and old women went.

QR x N

- 38. Q - K2 K - K2
- 39. Q - K3 R - K1
- 40. R - N7 Ch. K - Q1
- 41. Q-QR3 Resigns

Not all the King's horses,  
 nor all the King's men  
 Could set Humpty Dumpty together again.

\*\*\*\*\*

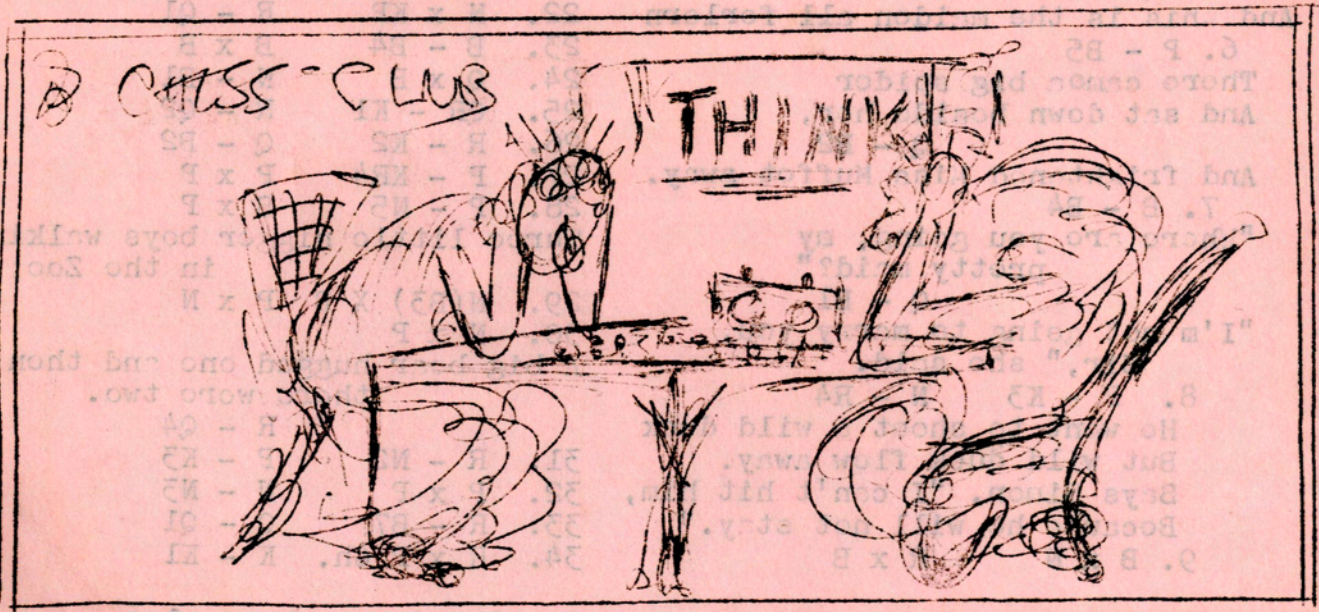
N STANDS FOR NOTHING (Continued)

While we are discussing changes in terminology, why do we not scrap the ugly word "Rook" which Webster defines as a corvine bird of European origin, or a sharpie or swindler! The word "Castle" is so much pleasanter to the ear, comes to the lips so much easier, and is so much more descriptive. Furthermore, to adopt the arguments of "Chess Life", "R" is so like "K" and "N" (or "H") while "C" is quite distictive.

\*\*\*\*\*

The recording of a game of chess is analogous to a newshawk's reporting of the tides of a real war, and, just as in real life, some battles turn out to be epics, others are of interest to strategists only, a few might have their humorous side, and, of course, there are plenty that are just plain dull.

Now most of the Master's games, such as the recent Botvinnik-Smyslov contest are primarily of interest to the strategists - the players with top ambitions. But there are plenty of games that should be published for their interest, their humour, and because they are closer to the way the average player plays. Even B. and S. made their mistakes. (for example, Game 1. Why did not Botvinnik play 19. ...P-N5 and win a pawn? He won anyway, so why worry, but it just goes to show. But, for these reasons, we intend to print interesting (rather than just model) types of games.





PAWN BLITZKRIEG

THE FOLLOWING GAME WAS PLAYED BY THE BARÃO DE BOICININGA AND THE SULTAN OF QUMQUAT. THE SIROCCO WAS BLOWING AND EVEN THE FOUNTAIN IN THE COURTYARD SEEMED JUST ABOUT TO DRY UP WITH THE INTENSE HEAT.

WHITE  
SULTAN OF QUMQUAT

BLACK  
BARÃO DE B.

1. P - Q4

BB, WHO LIKED THE FRENCH DEFENCE WHEN HIS OPPONENT OPENED WITH P - K4, HAD JUST BEEN STUDYING THE FRANCO-INDIAN DEFENCE AND SO HE REPLIED:

P - K3

THE SULTAN'S BOOK MOVE IS 2. P-QB4 BUT APPARENTLY THE SULTAN DID NOT KNOW THIS.

2. P - K4

THIS WAS JUST WHAT BB WANTED, OF COURSE.

P - Q4

3. P - K5

P - QB4

4. P - QB3

N - QB3

(SEE COL. 76, PAGE 110, MCO(9) WHICH, TO HERE, IS EXACTLY THE SAME POSITION).

5. B - K3

Q - N3

NOW WE GET AWAY FROM THE BOOK.

6. Q - Q2

P - B3

7. N - B3

KN - K2

HERE, BLACK IS TEMPTING WHITE TO TAKE THE QBP, BELIEVING THAT THIS WOULD SOON GIVE HIM COMPLETE CONTROL OF THE CENTER. WHITE RESISTS THE TEMPTATION.

8. P x K3P ?

NP x P

9. P - N4 ??

P x NP

10. P - B4

N - B4

11. P - B5

Q - R4

12. B - K2

WHITE IS JUST NOT PLAYING AGGRESSIVELY ENOUGH. B - Q3 WOULD HAVE BEEN STRONGER.

P - N3

13. O - O

P x P

WHITE THROWS AWAY YET ANOTHER PAWN!

14. R - B1

P - B5!

BLACK HAS NOW REALLY BOTTLED WHITE UP AND HAS TWO GOOD ATTACKS GOING - ONE IN THE CORNER AND ANOTHER AGAINST WHITE'S QP.

(SEE OPPOSITE COLUMN FOR POSITION AFTER 14TH MOVES).....

15. Q - K1

APPARENTLY TO TRY AND GET THE KNIGHT OUT OF THE CORNER.

Q - N3

16. B - Q1 ?

WHITE THROWS AWAY A THIRD PAWN!

QN x P

BLACK IS NOW THREE PAWNS AHEAD!

17. B - R4 CH. ?

A USELESS MOVE, BLACK WOULD WILLINGLY EXCHANGE BISHOPS BY B - Q2. HOWEVER, HAVING DECIDED TO LEAVE HIS KING IN THE CENTER TO GUARD THE PAWN CHAIN, HE PREFERS:

K - B2

18. N x N

N x N

WHITE IS JUST SCARED AND HAS NO PROPER AND COHERENT PLAN OF DEFENCE.

19. Q - Q2

P - K4

20. Q - Q1

B - KB4

BLACK COUNTERS WHITE'S THREAT OF CHECK.

21. B x N

Q x B

BLACK NOW THREATENS THE QR AND, AFTER B - B4 AND KR - N1, A MATING ATTACK. WITH THREE PAWNS UP, HE HAS NO FEAR OF AN EXCHANGE OF QUEENS EVEN THOUGH THIS WOULD MESS HIS PAWN CHAIN UP A LITTLE. HAVE YOU EVER SEEN SUCH A COMPLETE TAKING OVER OF CONTROL OF THE CENTER?

22. N - Q2

B - B4

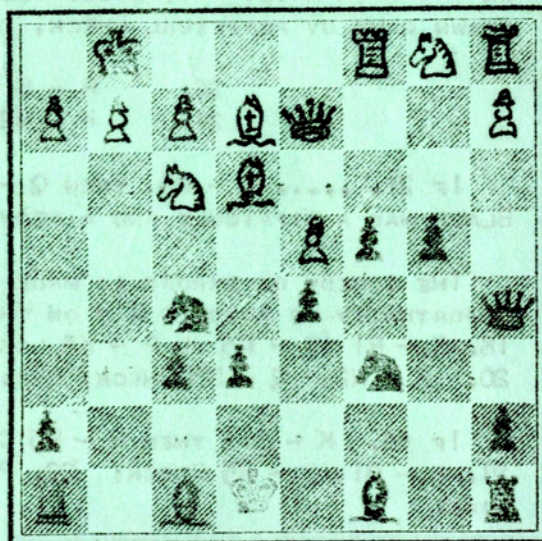
23. Q - K2

KR - N1

24. K - R1

Q x P

25. RESIGNS.

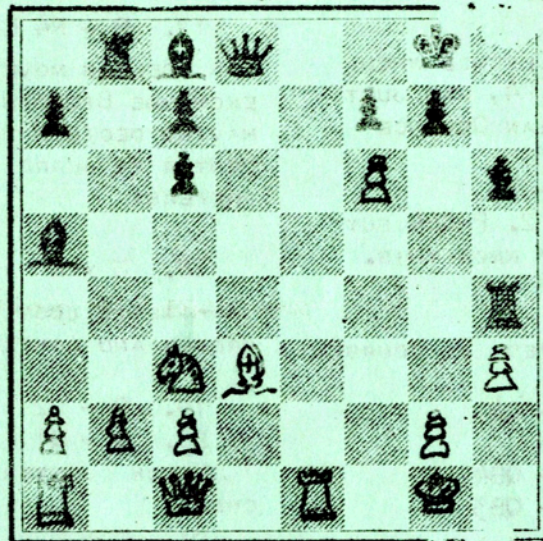


EVEN HOMER NODS

CONTINUING OUR SERIES IN GOOFS OF THE GREAT.

OUR SECOND EXAMPLE IS A COMEDY OF ERRORS CAUSED BY TIME PRESSURE ACTING TO THE DISADVANTAGE OF BOTH PLAYERS.

BLACK - SHOWALTER, 12 PCS.



WHITE - BARDELEBEN, - 12 PCS.

IN THIS POSITION, WHICH OCCURRED IN A GAME PLAYED IN THE MUNICH TOURNAMENT OF 1900, THE MOVES WERE AS FOLLOWS:

- |     |          |              |
|-----|----------|--------------|
| 17. | .....    | B - N3 CHECK |
| 18. | K - R1   | B x P        |
| 19. | P x B    | Q x P        |
| 20. | RESIGNS. |              |

BUT WHAT IS THE REPLY IF WHITE MOVES HIS ROOK TO HIS BISHOP'S SQUARE ON THE 20TH MOVE? IT WOULD SEEM THAT THE MOST BLACK CAN ACHIEVE IS A DRAWN GAME BY PERPETUAL CHECK, I.E. :-

- |     |        |                    |
|-----|--------|--------------------|
| 20. | R - B1 | R x P CHECK        |
| 21. | K - N2 | R - R7 CHECK, ETC. |

IF 21. .... Q - R5, THEN Q - B4 AND, AFTER THE EXCHANGE OF QUEENS, BLACK HAS A DIFFICULT AND A VERY DUBIOUS ENDING.

THE COMEDY OF ERRORS IS MADE COMPLETE BY THE FACT THAT BLACK MISSES THE OPPORTUNITY TO FORCE A WIN ON THE 17TH MOVE. 17. .... Q - Q4 CHECK; 18. K - R1 (Q - K3 OR R - K3 LOSES THE EXCHANGE), B x P; 19. P x B R x P Ch. 20. K - N2, Q - N5 CHECK, ETC.

IF 18. K - B1, THEN R - B5 CHECK; 19. K - K2 B x N; 20. P x B, R - B7 Ch. 21. K - B1, B - N5 CHECK; 22. P x B, Q x P CHECK; 23. B - K2, R - Q1 AND WINS.

NOTES from the Desk of the Tournament Director.

The Summer League Inter-Group Matches this year have enabled a number of C.F.N.C. Clubs to engage in play for the first time. This has been brought about with the combination of the Peninsula and part of the El Camino Real as one league, Marin and the remaining half of the El Camino Real as another league and by banding the entire Eastbay from Concord to Hayward. Here are the results to 8/12/58:

Combined League	-	Walnut-Sequoia	1 1/2
		Berkeley	1 1/2
		Concord	1 1/2
		Hayward	1
		Pleasant Hill	1 1/2
		Richmond	1
		Richmond Rooks	2 1/2
		Shell Dev.	1
		Marin-El Camino Real	
		Capablanca	1
		Colle	1
		Lasker	1
		Morphy San Quentin	1
		Westlake	0
		Peninsula-El Camino Real	
		Evans	1 1/2
		Morphy	1
		Reti	0
		Staunton	1 1/2

The schedule for summer play should be completed by the middle of October. In the planning stage is the Annual East-West C.F.N.C. Match to see which side of the bay wins the San Francisco Chronicle Plaque for 1958. We expect the date to be the last Sunday of October. We shall confirm the date by mail. The trophies for the Winners of the Summer League will be awarded at the East-West Match.

The WINTER LEAGUE has great promise! There will be two additional teams (and a possible third) for the Peninsula League. In the Eastbay we have promise of a new group to join the seven already playing. Remember! any team is welcome to join our Inter-Group Match Play--the only requirement is JOIN C.F.N.C. Just let us know if you are interested in organizing a team. We are available to get you going and we shall point out the advantages of CHESS FRIENDS of NORTHERN CALIFORNIA.

WELCOME to the Monterey Peninsula Chess Club which was visited and rated by George Koltanowski, our Field Director and Advisor, on the 24th of July. They meet on Wednesday night at 8:00 P.M. at HOUSE of FOUR WINDS, 540 Calle Principal, Monterey. Those interested in joining write: Mrs. Helen Bennett, P.O. Box 3081, Carmel.

SHALL WE MEET at the EAST-WEST MATCH?

William S. Stevens

## HOW IS YOUR RATING FIGURED?

by C. McGinley

The numerical rating system of Chess Friends has been in operation for over two years, but a brief outline of the method will still be of interest. Since at the beginning it was advantageous to gather as much data as was available, chief tournaments, individual matches and events not limited to members of Chess Friends were used in computing ratings. Due to the amount of work involved and to the fact that the ratings are now reasonably well stabilized, the decision has been made to limit rating computations to official Chess Friends interclub matches and tournaments. The data received from these events is now more than adequate to keep our ratings current.

The method used is this: It is based on a 40 point change in rating for a win or a loss tempered by 20% of the difference in the rating of the contestants. In the case of a draw, the lower ranking player gains twenty percent of the difference and the higher ranking player loses twenty percent. For example: A player with a rating of 1850 wins from a B player with a rating of 1780. The A player gains 26 points (40-14) for a new rating of 1876; the B player loses 26 points for a new rating of 1754. Had the A player lost, he would have lost 54 points (40 plus 14), and the B player would have gained 54 points. Had the game been a draw, the B player would have gained 14 points, and the A player lost 14 points. The maximum amount that can be gained or lost on a single game is 80 points (or in the case of a draw, 40 points). Changes in ratings take effect in the Spring and Fall after the league results are complete, but for the records, a player's rating changes after every game he plays, making the application of the 20% differential more realistic.

I will be happy to answer any inquiries about your rating. Just drop a card to 2763 Chelsea Drive, Oakland, 11, Calif.

### NEW U. S. OPEN CHAMPION

E.C. Cobo Artcaga won the U.S. Open Tournament held at Rochester, Minnesota, August 4th to 16th with a score of 10 out of a possible 12 points. Larry Evans, R.H. Steinmeyer and Donald Byrne were next with 9.5 points. One hundred and thirty-nine players participated. George Koltanowski was Tournament Director and was ably assisted by the IBM 650 Electronic Data Processing Machine.

### LETTERS TO THE EDITOR

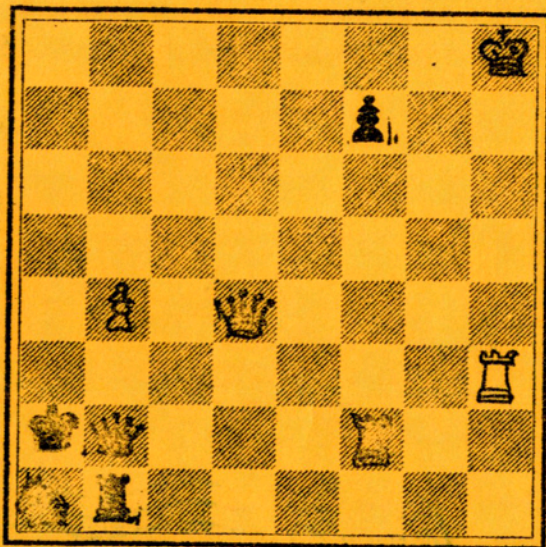
What's your opinion? Do you like "N" for Knight or would you prefer "H" for Horse? Why not write in and let us know.

Officers of Chess Friends of Northern California.  
President: Jens Lloyd Lund 3361 Mildred Lane Lafayette AT 4-4003  
Vice-Pres: Charles T. McGinley 2763 Chelsea Dr. Oakland KE 4-8599  
Secretary-Treasurer: Mrs. Anna Lund (same as above)  
Organization Director: George Koltanowski 200 Alhambra S.F. JO 7-2410  
Tournament Director: William S. Stevens 2005 35th Ave. S.F. LO 4-7324

THE PROBLEM PAGE  
A COMPETITION WITH PRIZES

PROBLEM No. 9

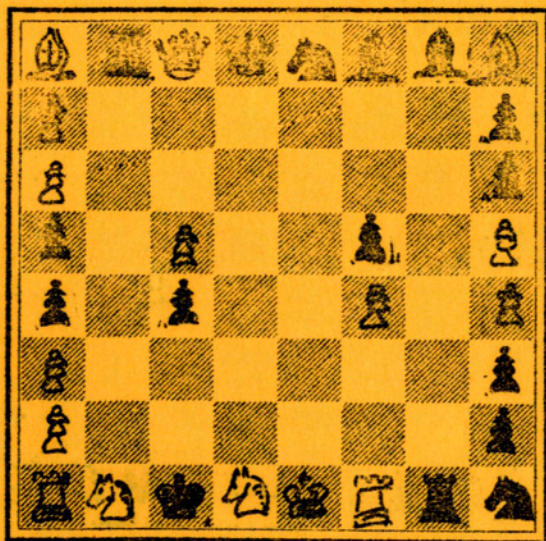
BLACK  
4 pieces



WHITE  
6 pieces  
White to move & mate in 2.

PROBLEM No. 11

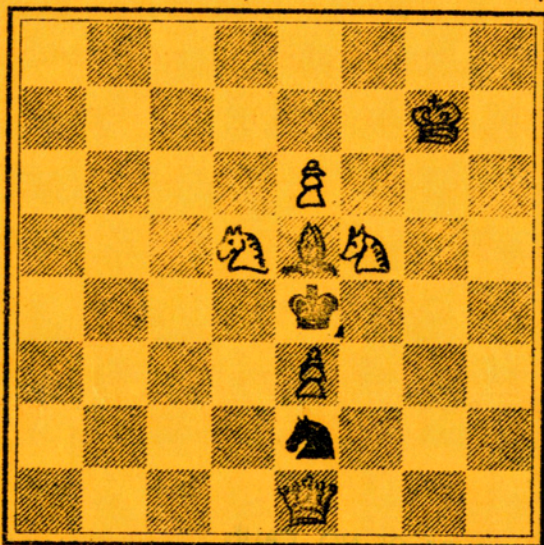
BLACK  
16 pieces



WHITE  
16 pieces  
White to play and mate in four.

PROBLEM No. 10

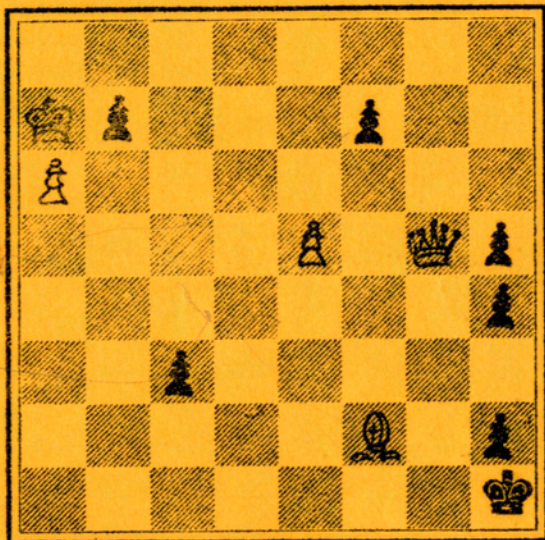
CRUX ET CORONA PROBLEM  
BLACK  
2 pieces



WHITE  
7 pieces  
White to play & mate in 4.

PROBLEM No. 12

BLACK  
7 pieces



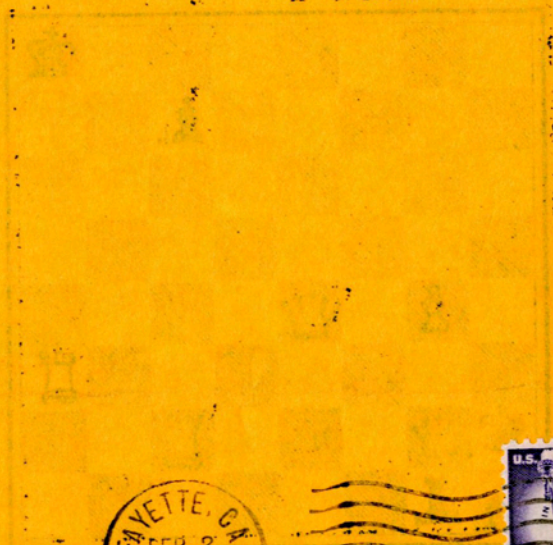
WHITE  
5 pieces  
White to mate in 3

9/3/58

2047 NO. 10. 1958  
CALIF. STATE PRINTING PLANT

OF THE UNITED STATES

POSTAGE WILL BE PAID BY ADDRESSEE

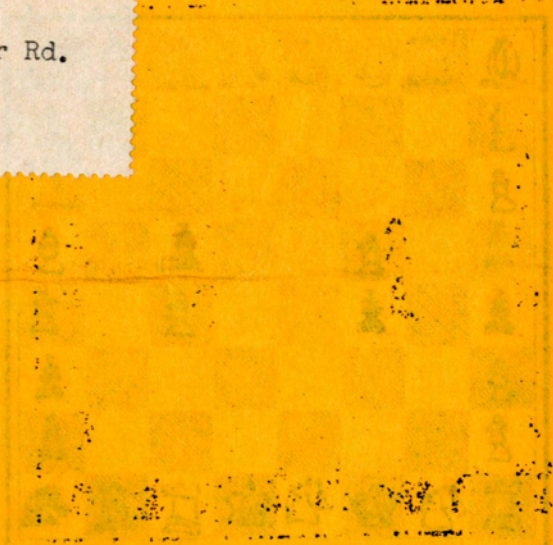


CHESS FRIENDS OF NO. CALIF.  
3361 Mildred Lane  
Lafayette, Calif.



RETURN POSTAGE GUARANTEED

William O. Jens  
2956 Joaquin Miller Rd.  
Oakland 2, Calif.



POSTAGE

PAID

POSTAGE WILL BE PAID BY ADDRESSEE

CHess FRIENDS of NORTHERN CALIF.

Inter-Group Matches Summer

1958

<u>LEAGUE</u>	<u>TEAM</u>	<u>PLACE</u>	<u>MATCH SCORE</u>
<u>Eastbay</u>	Richmond Rooks*	I	5½
	Berkeley*	II	4
	Concord	III	3 (17½)
	Hayward	IV	3 (17)
	Pleasant Hill	V	2½
	Richmond	VI	2
	Shell Development	VII	1

\*\*\*\*\*

<u>Marin-</u>	<u>TEAM</u>	<u>PLACE</u>	<u>MATCH SCORE</u>
<u>El Camino Real</u>	Morphy S.Q.*	I	4
	Colle*	II	2
	Lasker	III	1½ (11½)
	Capablanca	IV	1½ (7½)
	Westlake	V	0

\*\*\*\*\*

<u>Peninsula-</u>	<u>TEAM</u>	<u>PLACE</u>	<u>MATCH SCORE</u>
<u>El Camino Real</u>	Staunton*	I	2½
	Morphy Redwood City*	II	2
	Evans	III	1½
	Reti	IV	0

\* Trophy

\*\*\*\*\*

FLASH! FLASH!

As we go to press--Annual East-West Match-East 10, West 19!