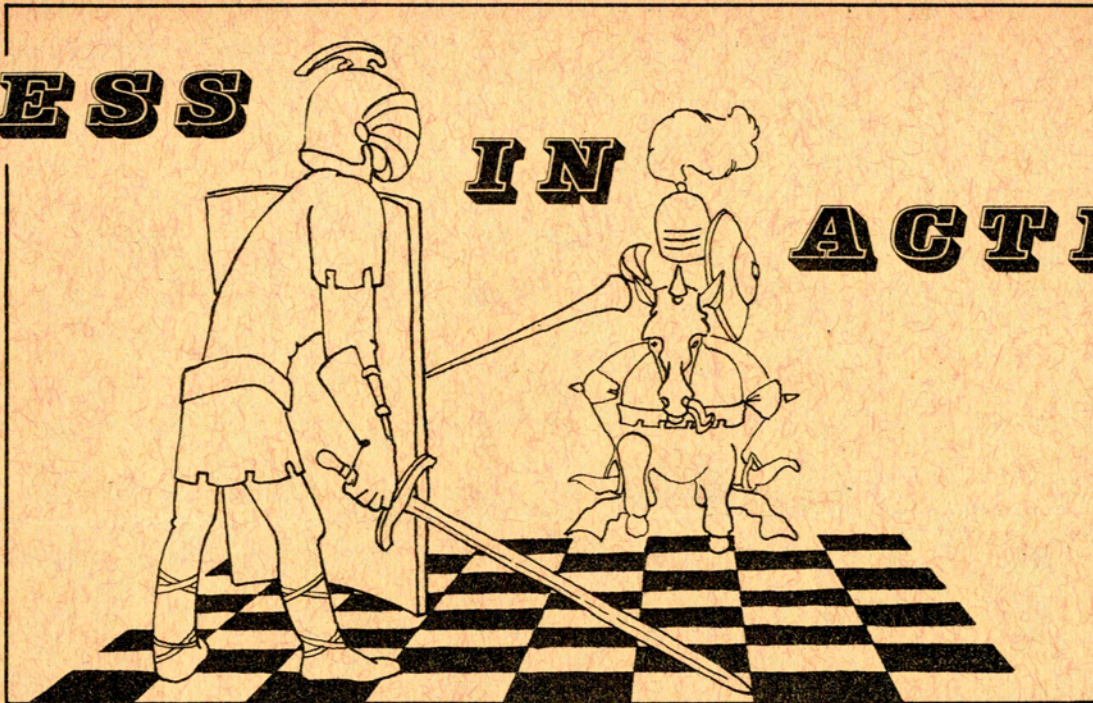


CHESS

IN

ACTION



SEPTEMBER - OCTOBER, 1958

PUBLISHED BY CHESS FRIENDS OF NORTHERN CALIFORNIA, A CHARTER MEMBER OF THE UNITED STATES CHESS FEDERATION. EDITED BY JOHN E. ALMOND, 14 BATES BLVD., ORINDA, CALIF.

EDITORIAL

WE ARE SOMEWHAT LATE AGAIN THIS MONTH - DUE MAINLY TO THE EDITOR GETTING SOMEWHAT TIRED OF HIS SHRUNKEN HEAD CHESS SET AND DEVOTING TOO MUCH OF HIS SPARE TIME TO A NEW GLASS EYEBALL SET. SO WE HAVE BEEN CAUGHT WITH OUR KING EXPOSED. TO BE QUITE HONEST, I JUST HAVE NOT BEEN ABLE TO COMPLETE AN EDITORIAL. I HAVE QUITE A FEW EDITORIALS ONLY HALF-WORKED OUT, SUCH AS "THE IMPORTANCE OF BEING GEORGE", "THE ART OF ONEPAWNUPMANSHIP" AND THE BRIGITTE BARDOT VARIATION OF THE FRENCH DEFENCE" - THE LATTER REQUIRED SEVEN VISITS TO "LA PARISIENNE" AND AN EXTRA VISIT TO "AND GOD CREATED WOMEN" WITH THE ORIGINAL FRENCH SUBTITLES. I AM TRYING TO GET SOME MORE INTIMATE SLANTS ON THIS BEFORE WRITING ANYTHING ABOUT IT.

HOWEVER, MANY WORTH-WHILE THINGS HAVE ALSO BEEN ACCOMPLISHED. WE HAVE AIDED IN ESTABLISHING A FLOURISHING CLUB IN LAFAYETTE AND ANOTHER IN OAKLAND AND THERE ARE MANY INDICATIONS THAT, NOT ONLY IS CHESS GETTING VERY POPULAR BUT CFNC IS SWIFTLY BECOMING THE LARGEST CHESS ORGANIZATION IN THIS COUNTRY.

SO, I WILL MERELY SAY SOMETHING ABOUT WHICH I FEEL DEEPLY AND THAT IS THAT ALL CLUBS SHOULD INSIST ON ALL MEMBERS BEING MEMBERS OF CFNC AND SHOULD ORGANISE SUBSCRIPTIONS ACCORDINGLY. THIS IS IN EVERYBODY'S INTEREST - THE MEMBER - THE CLUB, AND CFNC. DON'T FORGET THIS - ALL CFNC RECEIPTS ARE SPENT IN PROMOTING CHESS.

THE U. S. OPEN AND THE ELECTRONIC COMPUTER
by George Koltanowski

Having directed a number of U. S. Opens and other important tournaments, the Electronic Computer has not baffled and speechless, and that is saying a lot. I am still marvelling at all the data the MACHINE furnished me, a few seconds after the question was posed.

Results sheet, giving all the 138 players full result in detail, colors played, percentage points gained or lost, who played, and later the pairings, made life easy for the T. D. who now had a new excuse for anyone who complained by saying: See the MACHINE!

Now let the MACHINE speak for itself:

White won 42.1, Black won 32.7 and 25.2 games were drawn.

797 games were actually played; 395 opened with 1. p - Q4

271 with 1. P - K4, and 131 games had Irregular Openings.

The longest game of the tourney was that of Larry Evans vs. Popel, 115 moves. The shortest? Not worth while mentioning: 1 move -- an opponent overslept, arriving too late for the match.

From looking at the score of the 20 leading contestants, it finds that Curt Brasket of Minneapolis has a style of play that is most original and dangerous. Cobo-Artiaga was highly underrated and back-fired. (See the losses of Evans and Robert Byrne). The greatest comeback, after an absence from competitive chess of ten years, is the fine form shown by Olaf Ulvestad of Seattle.

The event attracted a strong field: 2 grandmasters, 19 full fledged masters and many experts. 25 States were represented, plus Cuba, Spain and Holland. 11 women players. 5 married couples. Did not pair them off, hehe, this for the sake of harmony. The Byrne brothers were paired in the 11th round. The oldest player, L. J. Isaacs from Chicago. The youngest: David H. Krause, 16 year old schoolboy from Palo Alto, California, who recently won the Southern Open in Sarasota, Florida, where 86 players participated.

Claims Department: Lady claims a game: She has a lone king. Her opponent: King, Queen, 2 rooks and four pawns. Reason: Kibitzers, she said. Ruling: No claim.

Question to the Electronic Computer: In the game ISHKAN vs. Sheldon, the following moves occurred: 1. P-K4, P-K4; 2. N-KB3, N-QB3; 3. B-B4, B-B4; 4. BxPch. Sheldon took the Bishop. He wants to know the name of the opening.

MACHINE ANSWER: THE ASHKAN OPENING.

A truly amazing machine! Or is it? I asked it if the Giants would win the pennant. It refused to answer. Anyone can predict outcomes in chess you know!

**** * * * * * * * * * *

THE HIPPOPOTAMUS OPENING

Some months ago, it came to our attention that an Englishman, by the name of J. C. Thompson, had devised an opening that had the advantage you could use it whether you had the White or the Black pieces and, as you could force the opening, no book work of any kind was required. Undoubtedly this must be of interest to the many Chess players who do not have much time for study.

A request for information on the opening was duly sent off and a reply received. Also received was a most interesting booklet entitled "HIPPOPOTAMUS CHESS OPENING". In his reply, Mr. Thompson claims the following advantages for the opening:

1. Draws are rare.
2. Games are always interesting and exciting.
3. No bookwork is required, as the opening can be forced.

Mr. Thompson also mentioned that he played George Koltanowski in this opening in a Simultaneous game some four or five years ago and the result was a draw. Which fact, I think you must agree, is recommendation enough for any defence.

The booklet "HIPPOPOTAMUS CHESS OPENING" gives little of the thinking or theory behind the opening moves but contains a number of extremely interesting games. One of these is from the Staunton Chess Players Handbook, page 394, and was a game between Horwitz and Staunton about 1850. Another game is between Furman and Spassky, Soviet Championship of 1957, in which Spassky, substantially using the Hippopotamus Opening as a defence, beat Furman in 24 moves. The remainder of the games are Thompson's own against Tolush, Tartakover, Keres, Ragozin,

Janovosic, Tarnofsky, and others. He does not win them all but they certainly are, as he claims, both interesting and exciting.

Mr. Thompson is apparently no mean Chess player. While he did not end up in the prizes, he did extremely well in the recent Begner Regis Tournament. - He plays for his County - Kent (equivalent to playing for California in inter-State Chess - if there were such a thing). He also plays for the Civil Service team (like playing for the Federal Govt. Chess Team - if there were such a thing) and he also plays for the Government Labor Team (whatever that might be). In other words, while Mr. Thompson has not yet won the British Chess Championship, he has always been right up pitching and apparently has never had to neglect his wife and family studying the latest developments in the various openings.

Now, no matter how good a player you may be, you must admit there are times when you feel it expedient to play an unorthodox opening or defence. For examples:

1. When you come up against a very conservative player who might be put off his game by an unorthodox line.
2. When you come up against a much stronger player than yourself, under the theory that it is better to play a line you know and he may not rather than one he knows and you do not.
3. When your opponent has White and opens in a line you dislike.
4. For players with good positional instincts and poor memories.

continued.....

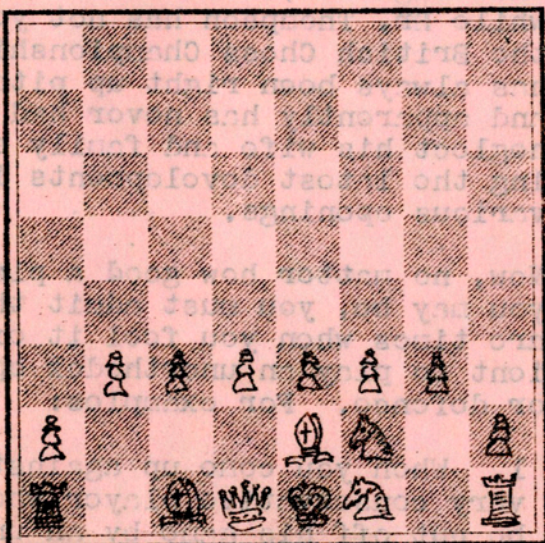
THE HIPPOPOTAMUS OPENING (Continued)

The opening may be played by Black or White. The first eleven moves, if the position permits them, are:-

1. P - KB3
2. P - Kkt3
3. Kt - KR3
4. Kt - B2
5. P - K3
6. P - QB3
7. P - Q3
8. B - K2
9. Kt - Q2
10. Kt - B1
11. P - Kt3

The moves bring about the following position:

BLACK



WHITE

A closer look at the games themselves, shows that Mr. Thompson rearranges the order of his moves according to circumstances. It also indicates that Mr. Thompson is more at home with the Black men and that there are more draws than possibly Mr. Thompson thinks.

Mr. Thompson played White against:

	Result	Opening moves
Tartakover	Lost	1. Kt-KR3 2.P-Kkt3
Griffiths	Lost	1. Kt-KR3 2.P-Kkt3
Richards	Won	1. Kt-KR3 2.P-Kkt3
Lewis	Drew	1. P-KB3 2.P-Kkt3
Jones	Drew	1. P-KB3 2.P-Kkt3
Ross	Won	1. Kt-KR3 2.P-Kkt3

Mr. Thompson played Black against:

Tolush	Won	1...P-Kkt3 2..Kt-KR3
Green	Lost	1...P-Kkt3 2..P-KB3
Ragozin	Lost	1...P-Kkt3 2..P-KP7
Tarnofsky	Won	1...P-Kkt3 2..P-KB3
Morgan	Won	1...P-KB3 2...P-Kkt3
Keres	Lost	1...Kt-KB3 2..P-Kkt3
Wilkes	Drew	1...P-KB3 2..P-Kkt3
Janosevic	Won	1...P-KB3 2..Kt-KR3

Probably the most interesting game in the booklet is his game against Tolush, which Thompson won in 54 moves. Another interesting game is his win against Janosevic in 21 moves:-

	Janosevic*	Thompson
1.	Kt - KB3	P - KB3
2.	P - K4	Kt - KR3
3.	B - B4	Kt - B2
4.	Castles	P - K3
5.	P - Q4	P - Q3
6.	Kt - B3	P - B3
7.	P - Q5	P - K4
8.	P X P	P X P
9.	Kt - KR4	P - Kt3
10.	P - KB4	B - Kkt2
11.	P - B5	P - Kt4
12.	Q - R5	Castles
13.	Kt - Kt6	P - Q4
14.	P X P	P X Kt
15.	P X KtP	Kt - R3
16.	P - KR4	B - Kt5
17.	P x P Check	K - R1
18.	P X P	Q - Q5 Check
19.	R - B2	B X Q
20.	P X Kt	Q X B
21.	Resigns.	

Copies of "HIPPOPOTAMUS CHESS OPENING" are available from The Editor, 14 Bates Blvd., Orinda, for 25¢ a copy. Quantity very limited.

* JANOVESIC IS A YUGOSLAV MASTER.

A New Kind of Tournament

George Koltanowski is currently organizing a new kind of tournament. It is a Knock-Out and he stipulates the opening. For example, the first one, now in progress, is with the Blackmar Gambit:

- 1. P-Q4 P-Q4
- 2. P-K4 PxP

Players toss a coin who takes white. The first round is held at some central point, after which players phone each other up to arrange the next round. It looks like being a great success so put your name down with George for the next tournament.

The Pacifica Chess Club, Redro Valley, California

George and Leah went to the above chess club on Thursday eve, Sept. 18th, and found an enthusiastic group of chess players...4 were already members of CFNC and 9 more joined up and they will be playing in the league matches.

They meet at 1176 Balboa Way, which is the home of Mr. and Mrs. Samuel Bottencourt, Tel: El 9-1500. Mrs. B. will be the club's contact (secretary). She plays chess too and they are a very friendly group. George entertained and lectured for them and a good time was had by all.

More on the Hippopotamus Opening

The Editor is personally offering two specially designed trophies for what he considers the best applications of this opening. The first will be given to the best Hippo game at the next Sheraton-Palace tournament, early in December and the second will be presented in the Spring to the best game submitted. Games must be tournament games, inter-club games, or simultaneous games against recognised experts.

"The player who treats openings from his individual viewpoint, always provided that it is strategically sound, and does not take accepted authority as gospel, is

far more likely to improve his playing strength than the man who simply follows the standard continuations without question."

- Leonard Barden, former British Chess Champion, in his "A Guide to Chess Openings".

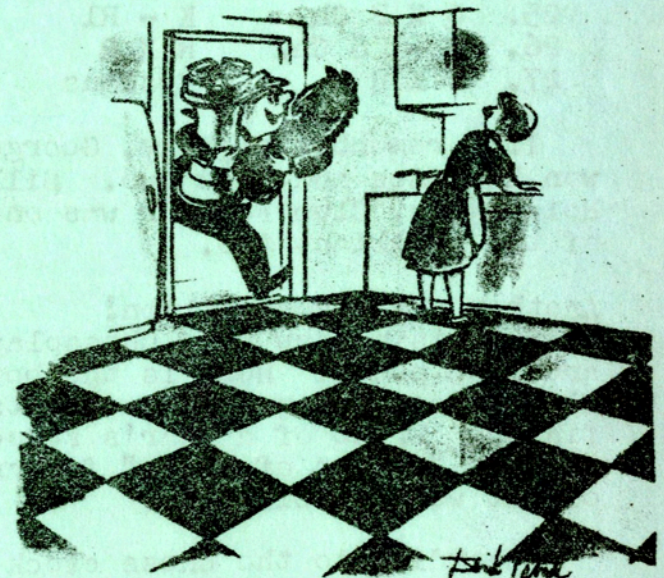
Behind the Headlines

Saw the Editor wending his way to the Cow Palace to see the Northern California Arabian Horse Association's show. Research on horses?

Also saw him going into a theatre to see "Gigi". Discovered he was sure a movie with that title must have been about a horse!

WANTED

Broken chess sets, even odd men. Send them to the Editor, saying what you would like for them.



"Martha! I've finally located a set!"

From: THIS WEEK Magazine, September 21, 1958

CHess CHIT CHAT

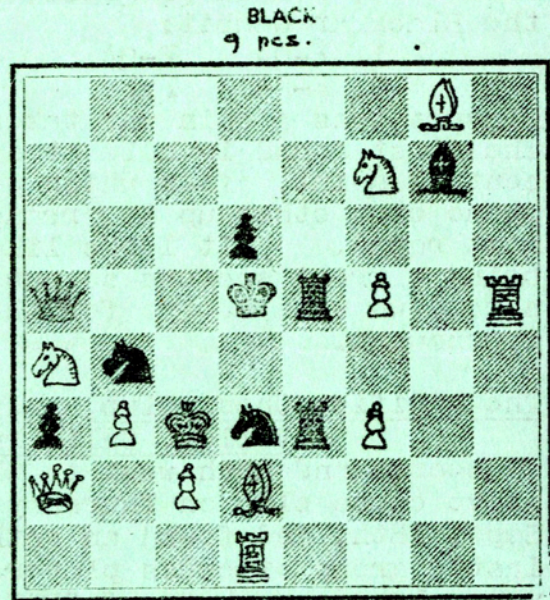
Lafayette Chess Club

George Koltanowski gave the new Lafayette Chess Club a good start on September 25 with a Simultaneous exhibition at Acalanes High School. One of the more interesting games is reproduced below:

In Interesting Position

Here is another of those interesting positions one gathers following George around:

- | | | |
|-----|------------------|------------------|
| | <u>George K.</u> | <u>R. Burger</u> |
| 1. | P - Q4 | N - KB3 |
| 2. | N - KB3 | P - B4 |
| 3. | P - Q5 | P - K3 |
| 4. | P - QB4 | P - QN4 |
| 5. | N - B3 | P - N5 |
| 6. | N - QN1 | B - N2 |
| 7. | B - N5 | P - KR3 |
| 8. | B X N | Q X B |
| 9. | P - K4 | P X P |
| 10. | BP X P | Q X NP |
| 11. | QN-Q2 | P - Q3 |
| 12. | B - B4 | B - K2 |
| 13. | O - O | Q - B3 |
| 14. | Q - R4 Ch. | K - B1 |
| 15. | QR-K1 | P-N3 |
| 16. | P - K5 | P X P |
| 17. | R X P | B - R3 |
| 18. | N - K4 | Q - QN3 |
| 19. | P - Q6 | B X B |
| 20. | P X B Ch. | K - N2 |
| 21. | P - K8:Q | R X Q |
| 22. | Q X R | B - N4 |
| 23. | Q - K2 | B X R |
| 24. | N - Q6 | N - B3 |
| 25. | Q X P Ch. | K - R1 |
| 26. | R - K8 Ch. | R X R |
| 27. | N X R | Resigns |



- WHITE
12 pcs.
- | | |
|-----------------|--------------|
| <u>White</u> | <u>Black</u> |
| 1. Kt - Q8 Ch. | R - K3 Ch. |
| 2. P - B6 Ch. | N - K4 Ch. |
| 3. B X R Ch. | N(N5)-Q6 Ch. |
| 4. P - N4 Mate. | |
- Seven consecutive checks!

If I remember rightly, George won 14 games and drew two. Bill Hoisington, Club Founder was one of the brilliant two.

Another Crazy Competition!

Surprising how many Chessplayers are also poets! Here is the beginning of something for Chesspoets to finish. Prize of a year's subscription to "Leaves of Chess" for any effort worth publishing.

"According to the Chess clock on The bookshelf in the den,
The time was either five to one
Or almost half-past ten.

Trip to Hawaii in 1959???

Chess Friends have been approached with the idea of getting up a party to spend the 1959 vacation in Hawaii - sailing on either the SS LURLINE or the SS MATSONIA - and playing a certain amount of Chess both ways. Is anybody interested?

Thanks to the Salin Press

Long overdue is our thanks to the Salin Press of San Rafael for doing such a beautiful job with the new front page design we have been using this year.

Mr. Lothar Salin, as you probably know, is one of our most enthusiastic Chess players.

* * * *

THE ARTIST CHESSPLAYER

III - THE SCACCATORIUM

A SCACCATORIUM IS "THE DOGHOUSE WITH A DIFFERENCE" OR CHESS DEN. ITS MAIN FEATURES ARE:-

1. AT LEAST ONE GOODSIZED CHESS TABLE WITH GOOD LIGHTING AND CHAIRS.
2. A COUNTER, ABOUT 2' WIDE, RUNNING THE LENGTH OF ONE WALL. THIS IS FOR SETTING UP BOARDS WITH PROBLEMS, POSTAL GAMES, ETC.
3. A BOOKSHELF FOR CHESS BOOKS.
4. A CUPBOARD FOR CHESS-SETS, MAGAZINES ETC.
5. A MANTLESHELF FOR TROPHIES.
6. A GLASSED IN CABINET FOR SPECIAL SETS.

ONE SPECIAL FEATURE OF THE SCACCATORIUM IS A FRIEZE RUNNING ALONG ALL AVAILABLE WALLS, ABOUT 5' FROM THE FLOOR. THIS FRIEZE IS REALLY A CONTINUOUS ROW OF CHESSBOARDS.

CHECKERED LINOLEUM, CUT INTO 8 X 8 SQUARES AND TACKED OR GLUED ONTO THE WALL, WITH A SPACE BETWEEN EACH BOARD, IS ONE IDEA. ANOTHER IDEA IS JUST TO CUT THE LINOLEUM INTO STRIPS 8 SQUARES WIDE AND SEPARATE THE CHESSBOARDS WITH STRIPS OF FIR OR PINE THAT CAN BE NAILED TO THE WALL. THIS HAS THE EXTRA ADVANTAGE OF FIRMLY FIXING THE FRIEZE TO THE WALL.

THE MEN FOR USING WITH THESE BOARDS ARE CUT OUT OF THIN WOOD OR MASONITE ON A FRET SAW. A BIG JOB BUT, WHEN DONE, YOU WILL BE ABLE TO SET UP TWENTY OR THIRTY POSTAL GAMES OR CHESS PROBLEMS AND THEN JUST SIT BACK AND STUDY THEM. INCIDENTALLY, THE PIECES STICK ON THE SQUARES BY HANGING THEM ON NAILS.

OTHER IDEAS FOR DECOR ARE TO USE THAT WALLPAPER GEORGE KOLTANOWSKI DESIGNED WITH A CHESS PROBLEM ON IT, CHECKERED LINOLEUM FOR THE FLOOR, LAMPS WITH CHESSMEN BASES.

IV - MAKING YOUR OWN CHESSMEN

THE DESIGNING AND FABRICATION OF ORIGINAL CHESSMEN IS NOT ONLY A SEPARATE HOBBY IN ITSELF BUT IT ALSO RESULTS IN SOMETHING EITHER USEFUL OR BEAUTIFUL OR BOTH.

CHESSMEN CAN BE MADE OUT OF THE STRANGEST THINGS. FOR INSTANCE, I HAVE RECENTLY MADE A CHESSSET WITH PLEASING LINES OUT OF THE WOODEN SPOOLS FROM THE CENTERS OF ADDING MACHINE TAPES. THESE ARE THROWN AWAY BY THE THOUSANDS IN ALL ACCOUNTING OFFICES. THE ROOK IS FORMED BY CUTTING THE TOP IN TRADITIONAL PATTERN AND ELABORATING WITH FOUR SLOTS OR WINDOWS IN THE SIDES. THE BISHOP IS FORMED BY SLICING A DIAGONAL WEDGE OFF THE TOP AND THEN REPLACING IT ON THE UN CUT PART OF THE SAME END. THIS FORMS AN OVAL. ANOTHER WAY OF FORMING THE BISHOP IS TO MAKE A V CUT IN THE TOP OF THE SPOOL. THE KNIGHT IS A PROBLEM AND THIS I SOLVED BY CUTTING A SLOT ABOUT AN INCH FROM THE TOP, MAKING A PLUMED HELMET WITH THE AID OF PLASTIC WOOD. THE KING AND QUEEN WERE EASILY FORMED BY MAKING TRADITIONAL TOPS WITH PLASTIC WOOD. PAWNS WERE SPOOLS CUT IN HALF WITH SMALL BALLS OF PLASTIC WOOD STUCK ON TOP. THE ENTIRE SET WAS THEN DIPPED IN "SCULP-METAL" (LIQUID ALUMINUM) AND POLISHED AND BURNISHED. LEAD OR LEAD SHOT GIVES THE PIECES THE REQUIRED WEIGHT AND THEY CAN THEN BE FINISHED OFF WITH FELT. (TO BE CONTINUED).

THE LONGEST CHESS PROBLEM IN THE WORLD

I CERTAINLY STIRRED UP SOME INTEREST WHEN I ASKED FOR LONGER PROBLEMS THAN 10 MOVERS IN THE LAST ISSUE OF "CHESS IN ACTION". I NOW KNOW THAT SOME OF OUR READERS CAN WRITE AND CAN EVEN AFFORD 4 CENTS FOR A POSTAGE STAMP.

MR. NORMAN REIDER WRITES TO SAY THAT THERE IS A 15 MOVER IN GILBERT'S "CHESS NUTS". HE ALSO SAYS:

"SEE ALSO BABSON IN BRENTANO'S CHESS MONTHLY, 1882, FOR A MATE IN 1220 MOVES!"

MR. JAMES SCHMERL WROTE A VERY INTERESTING LETTER. HERE IT IS:

"A PROBLEM LONGER THAN A TEN-MOVER? SURE.

KOLTANOWSKI HAD A THIRTEEN-MOVER IN HIS CHRONICLE COLUMN IN EARLY 1955. IN SHORT FORM, IT IS: 8/PB3P2/P2P4/P2P1P2/KPKP4/3P4/3P4/8. THE SOLUTION (SIMPLE) GOES: 1. B-R8, P-B3; 2. K-R3, K-N4; 3. B-B6CH, K-B5; 4. B-N7, K-N4; 5. B-B8, K-B5; 6. B-K6, K-N4; 7. B-N8, K-B5; 8. B-B7, K-N4; 9. B-R5, K-B5; 10. B-B3, K-N4; 11. B-R1, K-B5; 12. B-K4, K-N4; 13. BxPch MATE!

"I HAVE ALSO COMPOSED A THIRTEEN-MOVER: K7/PP5P/1P5P/3PIPIP/3PIP2/5P2/4P2P/5K2. THE SOLUTION (LIKELIKE SIMPLE) RUNS: 1. K-N2, P-R5; 2. K-R3, P-R4; 3. KxP, P-R3; 4. K-R3, P-R5; 5. KxP, P-R4; 6. K-N5, P-R5; 7. KxP(B4), P-R6; 8. P-K4, Pxp; 9. Pxp, Pxp; 10. P-Q5, P-K6; 11. P-Q6, P-K7; 12. P-Q7, P-K8-Q; 13. P-Q8-Qch MATE!

"HOWEVER, THESE LITTLE SHORTIES HARDLY COMPARE TO E. WOODWARD'S PROBLEM PUBLISHED IN THE VOL. 3 - No. 3 ISSUE OF CHESS DIGEST. THIS THIRTY-MOVER IS AS FOLLOWS:

5B2/81P6/PPPIPIPI/BIpPPPI/k2P1P2/n2N4/K7

THE SOLUTION TO THIS MARATHON CONSISTS OF THIRTY MOVES MADE SOLELY BY THE KNIGHT AT R2. STARTING AT R2 HE GOES TO B1, K2, N1, R3, B2, Q1, N2, R4(NxP), N2, Q1, B2, R3, N1, K2, B1, K2, N1, R3, B2, Q1, N2, R4(NxP), N2, Q1, B2, R3, N1, K2, B1, N3 WHICH IS THE FINAL AND MATING MOVE FOR THE TIRED KNIGHT, WHEW!

"A STILL LONGER PROBLEM MENTIONED IN THE FIRESIDE BOOK OF CHESS. THE POSITIONS: 3NK3/3NN3/3PP3/3BB3/3PP3/3PP3/2RQKR. THIS PROBLEM WAS COMPOSED BY J.N. BABSON IN 1882 AND IS A ONE-THOUSAND-TWO-HUNDRED-AND-TWENTY-MOVER!!

"THE TERMS OF THE PROBLEM AS QUOTED FROM FIRESIDE ARE, "MATE ON THE 1220TH MOVE, AFTER COMPELLING BLACK TO MAKE THREE SUCCESSIVE AND COMPLETE KNIGHT'S TOURS!" NEEDLESS TO SAY, NO SOLUTION IS MENTIONED.

"A TEN-MOVER? DIDN'T KNOW THEY MADE THEM THAT SHORT!

IN CASE THE PROBLEM PAGE DIAGRAMS ARE NOT TOO CLEAR, HERE THEY ARE:

PROBLEM No. 1	1k1nR1Br/2PBKPr1/1q1Pp3/5N2/2N5/8/8/
2	8/1N5B/1R3P1P/R2Nnp2/Q1PNKBp1/2P3k1/2R1P3/Bq1r4
3	8/8/8/8/2R5/4K3/4P3/4K3
4	8/k7/8/8/6P1/5Bq1/5RRN/5RbK

THERE WILL BE THE USUAL ENJOYABLE EAST-WEST MATCH OF THE YEAR HELD ON SUNDAY, OCTOBER 26, 1958, AT 1:00 P.M. AT THE BRET HARTE SCHOOL, 1500 MAIN STREETS, HAYWARD, CALIF. THERE ARE HAYWARD CHESS CLUB MEMBERS WHO WILL BE FRESHENMENTS AND FROM OAKLAND FOR THE BUS FROM SAN FRANCISCO IF YOU INTEND TO WALK THERE.



OAKLAND CHESS CLUB
SOMETHING REALLY IMPORTANT TO BE HAPPENING IN OAKLAND - GEORGE K...
LESSONS ARE BEING DONE BY THE "M" ARE DOING SO...
UN-NAMED OAKLAND CLUB, Y.M.C.A. FACILITY...
AND ALREADY BY THE CLUB HAS ENOUGH MEMBERS...
14 BATES BLVD., OAKLAND, AND JOHN...
YOUR EDITOR WAS HONORED...
I FAVORITE CHESS CLUB...
A MEMBER OF MORE THAN ONE CLUB? IF SO, WHAT DO YOU DO WHEN THE CLUBS...
DO THEY FIGHT TO HAVE YOU OR DO THEY FIGHT NOT TO HAVE YOU?

SAN FRANCISCO RECREATION AND PARK DEPARTMENT CHESS CHAMPIONS

THE SCACCIC ARTS ASSOCIATION

HAS IT EVER OCCURRED TO YOU HOW MANY FACETS THERE ARE TO THE SIMPLE GAME OF CHESS? THERE ARE FAR MORE INTERESTS IN CHESS THAN SIMPLY PLAYING AND WINNING GAMES. PLAYING AND WINNING IS PROBABLY THE MOST EXCITING, I WILL GRANT YOU, BUT THERE ARE MANY OTHER ASPECTS OF CHESS IN WHICH US PAWNS (I NEARLY SAID PEONS!) CAN GET TREMENDOUS SATISFACTION FROM THE GAME. TO TRY AND LIST SOME OF THESE:

- (1) CHESS PROBLEMS - COMPILATION AND SOLVING THEREOF. AN ART IN ITSELF.
- (2) CHESS LITERATURE - WRITING ABOUT CHESS.
- (3) CHESS POETRY - WRITING POETRY ABOUT CHESS.
- (4) CHESS ART - THE MAKING OF CHESSMEN AND BOARDS.
- (5) CHESS ART - THE COLLECTION OF INTERESTING SETS (EXPENSIVE THOUGH!!!!)
- (6) CHESS ART - THE FABRICATION OF SCACCICIANA OTHER THAN BOARDS AND MEN.
- (7) GRAPHIC CHESS ART - OIL AND WATER COLOURS. (8) CHESS PHOTOGRAPHY.

WELL, TO GET DOWN TO BRASS TACKS, WE FEEL THAT THERE SHOULD BE A GREAT INTEREST IN WHAT WE CHOOSE TO TERM "THE SCACCIC ARTS" AND, WE ARE APPEALING TO ALL READERS WHO FEEL THAT THEY COULD CONTRIBUTE SOMETHING - ARTISTICALLY OR MONETARILY, TO SEND US A DOLLAR (\$1) FOR MEMBERSHIP. SUCH FUNDS WILL BE UTILISED IN CIRCULARISING ALL ART CLUBS AND SOCIETIES AND IN THE PROMOTION OF A FIRST SCACCIC ARTS EXHIBITION SOMEWHERE ON THE MONTEREY PENINSULAR NEXT SUMMER. MAYBE COMBINED WITH SOME SORT OF TOURNAMENT.

NEW USE FOR CHESS CLOCKS

YOUR EDITOR, WHO IS A CERTIFIED PUBLIC ACCOUNTANT, HAS DISCOVERED A NEW USE FOR HIS CHESS CLOCK. IN HIS PROFESSION, IT IS IMPORTANT THAT A PROPER RECORD OF TIME BE KEPT ON ALL TAX AND ACCOUNTING JOBS, LARGE OR SMALL, SO:-

- 1. HE SETS THE CLOCK AT 12 WHEN HE BEGINS WORKING ON A CERTAIN JOB.
- 2. WHEN INTERRUPTED (TELEPHONE CALLS, LUNCH, COFFEE BREAK, ETC.) HE PUNCHES THE OTHER CLOCK.
- 3. WHEN HE RETURNS FROM HIS INTERRUPTION, HE PUNCHES THE FIRST CLOCK.
- 4. WHEN THE JOB IS COMPLETED, HE HAS THE EXACT TIME - FAIR BILLING TO BOTH CLIENT AND C.P.A.

ALSO... THINK OF THIS: GROUND-TO-AIR DEFENSE ROCKET TO INTERCONTINENTAL BALLISTIC MISSILE

CHESS FRIENDS' ANNUAL EAST-WEST MATCH- 1958 AT HAYWARD, CALIFORNIA

THERE WILL BE THE USUAL ENJOYABLE EAST-WEST MATCH OF THE YEAR HELD ON SUNDAY, OCTOBER 26, 1958, AT 12.30 P.M., AT THE BRET HARTE SCHOOL, "D" AND MAIN STREETS, HAYWARD, CALIFORNIA. HOSTS ARE HAYWARD CHESS CLUB. THERE WILL BE REFRESHMENTS AND DOOR PRIZES. TAKE THE #82 BUS FROM OAKLAND OR THE "R" BUS FROM SAN FRANCISCO. START IN GOOD TIME IF YOU INTEND TO WALK THERE.

OAKLAND CHESS CLUB

SOMETHING REALLY IMPORTANT SEEMS TO BE HAPPENING IN OAKLAND - GEORGE K.'S LESSONS AT THE "Y" ARE DOING SO WELL THAT CLASS MEMBERS ARE FORMING AN AS-YET-UN-NAMED OAKLAND CLUB. YMCA FACILITIES ARE SUPERIOR TO MOST CHESS CLUB VENUES AND ALREADY THE CLUB HAS ENOUGH MEMBERS FOR A TEAM. LEADERS ARE JACK POWELL, 3418 SCHOOL STREET, OAKLAND, AND JOHN ALMOND, 14 BATES BLVD., ORINDA.

LAFAYETTE CHESS CLUB

YOUR EDITOR WAS HONORED THIS LAST WEEK BY BEING ELECTED PRESIDENT OF THE LAFAYETTE CHESS CLUB. PROBLEM: CAN A CHESSPLAYER, SHOULD A CHESSPLAYER, BE A MEMBER OF MORE THAN ONE CLUB? IF SO, WHAT DO YOU DO WHEN THE TWO CLUBS PLAY EACH OTHER? DO THEY FIGHT TO HAVE YOU OR DO THEY FIGHT NOT TO HAVE YOU?

SAN FRANCISCO RECREATION AND PARK DEPARTMENT CHESS CHAMPIONS

CITY FINALS - GIRLS

- DIV. I (6 YRS AND UNDER) 1ST MARY ALICE FREEMAN, 2ND LINDA GONZALES, 3RD SUSAN CARLOMAGNO
II (7 - 8 YRS) 1ST CINDY CARLOMAGNO, 2ND BARBARA MATTHEWS, 3RD. MERISA SMITH.
III (9 - 10 YRS) 1ST DENA COOPER, 2ND CATHI OLIVA, 3RD SALLY OREAR.
IV (11 - 13 YRS) 1ST WINIFRED CHUN, 2ND MAUREEN O'ROURKE, 3RD LOUISE HERSCOWITZ.
V (14 - 16 YRS) 1ST CANDACE STEVENSON, 2ND ELLEN CHAN, 3RD BETTE HERSCOWITZ.
VI (17 - 19 YRS) 1ST DIANE SLAUGHTER, 2ND MARTHA GAGG.

CITY FINALS - BOYS

- DIV. I (6 YRS AND UNDER) 1ST JOSEPH FREEMAN, 2ND TOMMY MARQUEZ, 3RD JIM MATTHEWS AND JOEY FAULKNER.
II (7 - 8 YRS) 1ST LEONARD WESTWOOD, 2ND WALTON CHUN, 3RD JOHN SUSKO.
III (9 - 10 YRS) 1ST WENDELL CHUN, 2ND HOWARD MAR, 3RD STANLEY FRIEDMAN.
IV (11 - 13 YRS) EDDIE COOPER, THOMAS CHAN AND BILL COOK (1ST, 2ND, AND 3RD).
V (14 - 16 YRS) 1ST DON SUTHERLAND AND MICHAEL EWELL, 3RD. IVAN VEGVARY.
VI (17 - 19 YRS) 1ST PETER CLEGHORN, 2ND GEORGE ETZEL, 3RD BILL WIRTH.

COSMIC CHESS

WE READ, IN THE AUGUST ISSUE OF CHESS REVIEW, THAT BOB KENYON OF 1827 OXFORD STREET, BERKELEY, CALIFORNIA HAS DESIGNED A COSMIC CHESS SET IN WHICH THE KING IS A GLOBE, THE QUEEN IS A SPACE SHIP OR ROCKET, THE BISHOP IS A "COMPUTER", THE KNIGHT IS A "SPACEMAN", THE ROOK IS AN "ATOMIC PILE" AND THE PAWNS ARE "MISSILES".

WE ALSO READ THAT ARTHUR ELLIOTT, ONCE AN ANIMATOR FOR WALT DISNEY, NOW LIVING IN ROME, HAS DESIGNED A SIMILAR SPACE AGE CHESS SET IN WHICH THE PAWNS ARE GROUND TO AIR DEFENCE ROCKETS, CASTLES ARE RADAR TOWERS; BISHOPS ARE INTERCONTINENTAL BALLISTIC MISSILES; KNIGHTS ARE SPACE SATELLITES, THE QUEEN IS A SPACE SHIP AND THE KING IS A SPACE STATION.

PERSONALLY, ONE OF THE REASONS WE LIKE PLAYING CHESS IS TO TRY AND GET AWAY FROM THE MAD MAD MAD OUTSIDE WORLD WITH ITS ATOMIC PILES AND RADAR TOWERS. ALSO, THINK OF THIS: "GROUND-TO-AIR DEFENSE ROCKET TO INTERCONTINENTAL BALLISTIC MISSILE. 4TH!!"

THE ALAMEDA CHESS CLUB

THE ALAMEDA CHESS CLUB HAS BEEN REORGANIZED AND WILL BE KNOWN AS:

THE OAKLAND HILLTOP CHESS CLUB

MEETING AT THE HOME OF MR. BILL JENS, 2956 JOAQUIN MILLER ROAD, OAKLAND. TELEPHONE KELLOGG 4-2152. THE CLUB MEETS ON THE FIRST THURSDAY OF EVERY MONTH. VISITORS ARE WELCOME.

MONTEREY PENINSULAR CHESS CLUB

NEW GROUPS ARE FORMING ALL OVER NORTHERN CALIFORNIA AND ONE OF THE MOST PROMISING IS A GROUP THAT WILL BE MEETING REGULARLY AT THE HOUSE OF THE FOUR WINDS IN MONTEREY. GEORGE KOLTANOWSKI GAVE AN EXHIBITION TO START THE BALL ROLLING AND WON 23 OUT OF 23 GAMES. THERE WERE OVER 50 PEOPLE PLAYING AND KIBITZING. GEORGE ALSO PLAYED 2 BLINDFOLD GAMES AND WON THESE ALSO. MORE DETAILS LATER.

OAKLAND Y.M.C.A. CHESS CLUB

GEORGE HAS BEEN GIVING SOME MOST INTERESTING LESSONS AT THE "Y" AT 2101 TELEGRAPH AVENUE, OAKLAND, AND THIS HAS RESULTED IN THE FORMATION OF WHAT PROMISES TO BE A VERY LARGE CLUB WHICH WILL MEET ON FRIDAY EVENINGS AT 7.30 LED BY JACK POWELL AND JOHN ALMOND. VISITORS ARE WELCOME.

THE HOLIDAY SPECIAL OPEN CHESS FESTIVAL - DEC. 13TH, 14TH

A FIVE-ROUND SWISS TOURNAMENT WILL BE HELD ON THE ABOVE DATES AT THE SHERATON-PALACE HOTEL IN SAN FRANCISCO. ALSO, FOR THOSE WHO CANNOT BE PRESENT BOTH DAYS, THERE WILL BE A SATURDAY ROUND ROBIN AND A SUNDAY ROUND ROBIN. DETAILS OF THIS WILL SHORTLY BE MAILED TO ALL CFNC MEMBERS. THE USUAL WONDERFUL TURN-OUT IS EXPECTED. THERE WILL BE A BRUNCH GET-TOGETHER ON THE SUNDAY. DON'T MISS THIS.

COMPARATIVE VALUES FOR THE CHESS PIECES

WE HAVE RECENTLY BEEN BROWSING THROUGH ZNOSKO-BOROVSKY AND WERE SOMEWHAT SURPRISED TO FIND THAT HE RATED A KNIGHT AS 8 POINTS OR UNITS OF CHESS FORCE (A PAWN BEING $3 \frac{1}{2}$) AND A BISHOP AS 10 POINTS. THIS MADE US WONDER IF THERE HAD BEEN A MORE DETAILED ANALYSIS OF THIS SUBJECT IN RECENT YEARS. CHECKING UP WITH OTHER BOOKS, WE DID NOT FIND TOO MUCH ON THE SUBJECT EXCEPT IN ANOTHER OLD BOOK "CHESS FUNDAMENTALS" BY CAPABLANCA. CAPABLANCA GIVES NO VALUES BUT MAKES A NUMBER OF STATEMENTS SUCH AS BISHOP EQUALS KNIGHT BUT BISHOP STRONGER AGAINST PAWNS THAN KNIGHT AND THAT BISHOP PLUS PAWNS IS BETTER THAN KNIGHT PLUS PAWNS AND THAT BISHOP PLUS ROOK IS BETTER THAN KNIGHT PLUS ROOK AND THAT A BISHOP IS BETTER THAN 3 PAWNS BUT A KNIGHT RARELY SO AND THAT BISHOP INCREASES IN VALUE AS PIECES ARE TRADED OFF WHILE A KNIGHT DECREASES AS PIECES ARE TRADED OFF. ALL OF WHICH FIT IN WITH Z-B'S VALUATIONS. HOWEVER, CAPABLANCA MENTIONS TWO COMBINATIONS THAT DO NOT FIT IN MATHEMATICALLY. THEY ARE:-

QUEEN PLUS KNIGHT BETTER THAN QUEEN PLUS BISHOP

2 ROOKS ARE WEAKER THAN 2 KNIGHTS PLUS BISHOP.

ALL OF WHICH GIVES ME FOOD FOR THOUGHT THAT SOME MATHMATICIAN OUGHT TO BE ABLE TO COME UP WITH SOME MORE SCIENTIFIC INFORMATION ON THIS SUBJECT.

*I KNEW IT WAS ONLY A QUESTION OF TIME - ED.

CHESS FRIENDS of NORTHERN CALIFORNIA RATINGS
to 10/21/58

CLASSIFICATIONS! E-----Expert..... 2000 and up
 A-----Advanced..... 1800 to 1998
 B-----Intermediate..... 1600 to 1798
 C-----Average..... 1598 and under

Albritton, T.....	B1650	Buder, Norman.....	A1832	Dodge, E.....	C1352
Alden, Dr. J.....	C1356	Burch, Dallas.....	B1794	Duering, R....	B1672
Akins, John.....	B1606	Bushby, A.A.....	C1410	Dunn, Thomas..	B1664
Allen, Edith.....	C1500	Butler, Chas. Jr..	B1726	Eason, Don....	C1500
Allen, Robert.....	B1630	Button, Ron.....	C1598	Edelstein, H..	A1900
Allen, Leighton.....	B1772	Byrne, Josepha....	C1376	Eliason, C.E..	C1386
Almond, John E.....	B1742	Byrne, Robert.....	B1770	Erickson, C...	B1792
Ambrose, Larry.....	B1696	Cable, K.C.....	C1556	Evans, S.....	C1426
Anders, Ernest.....	A1942	Caldwell, A.H.....	C1480	Ewell, M.....	C1558
Anderson, Ralph.....	B1620	Campos, A.....	B1670	Farly, George..	A1852
Ayer, Milo.....	C1388	Cannon, R.....	C1560	Farris, R.....	C1444
Babcock, Mervon.....	C1402	Carriel, H.....	C1518	Faucher, F....	C1500
Badley, Milton.....	C1416	Carter, R.M.....	A1856	Fay, Andy.....	C1468
Baggett, Noel.....	A1818	Cashburn, Wm.....	B1668	Feldhaus, B...	B1700
Bailey, Wm. A.....	C1464	Cassidy, Joseph....	B1658	Feldmanis, A..	A1916
Barthel, Carl.....	C1532	Castellano, Wm....	A1802	Feldsteim, M..	C1560
Bartholomew, Ernest..	A1804	Chappell, Dr. A....	A1954	Ferguson, K...	C1446
Bartholomew, M.M....	B1612	Christ, Alex.....	B1726	Field, M.....	C1598
Batchelder, E.H.....	C1500	Clack, Lionel.....	B1626	Figone, L.....	C1408
Beade, Howard.....	C1540	Clarke, Sid.....	C1542	Fitz, John....	C1520
Bejack, M.D.....	C1550	Cleaveland, G.H....	B1604	Flohr, E.....	A1936
Bennett, Helen.....	C1500	Cleghorn, Peter....	A1884	Flores, A.....	B1708
Bergman, Carl.....	E2020	Collins, Dr. V....	C1492	Florio, B.....	C1442
Berry, Barton.....	B1692	Colton, E.....	C1550	Folsom, G.....	C1350
Bettencourt, Mrs. W..	B1700	Conness, John.....	C1364	Fong, P.....	B1688
Bettencourt, Samuel..	B1700	Cooley, Chas.....	C1436	Foreman, B....	B1692
Bignami, Louis.....	B1684	Coriou, Louise....	C1260	Fouke, G.....	B1658
Birka, Wm. F. Jr....	B1662	Coyne, George.....	C1544	Frandy, M.....	B1620
Blaga, Dan, Jr.....	C1366	Crabtree, Wm.....	B1798	Fraser, G.....	C1474
Blaga, Dan, Sr.....	C1456	Cranert, Walter....	C1556	Frazier, G....	B1786
Blied, Elvina.....	C1300	Cross, Clinton....	B1700	Fredgren, J...	A1818
Blinkenberg, Robert..	C1586	Cuneo, Ernest.....	A1854	Freeman, R....	C1396
Blumberg, Kurt.....	A1898	Cuneo, Raymond....	A1926	Frey, Dr. A...	B1648
Boehme, Rinehard....	B1622	Dalessi, Don.....	B1638	Gaines, Dr.W..	C1536
Bogas, Edgar.....	B1678	Dana, Ted.....	A1918	Gee, Ted.....	B1618
Bogas, Roy.....	B1668	Daniloff, Elena....	B1684	Gehre, R.....	C1596
Bogdanoff, David....	A1952	Davis, Donald.....	C1500	Geier, Bob....	B1700
Brarens, G.....	B1778	Davis, Wm. R.....	B1608	Gillette, D...	A1828
Braun, Edgar.....	C1366	Delaney, W.S.....	C1540	Gold, Chas....	A1824
Brent, Eric.....	B1728	Delk, C. Clark....	C1286	Gonzales, C.F.	C1432
Bristow, J.W.....	A1920	Delpino, Frank....	B1638	Goodwin, R....	B1772
Brower, Jill.....	C1306	Deurloo, Herman....	B1700	Gough, J.C....	A1856
Brown, C.R.....	B1664	Devote, E.....	B1688	Gowen, James..	C1410
Brown, Lincoln.....	C1556	Dickinson, Robert..	A1972	Gowen, Lloyd..	A1818
Bryan, Lynn A.....	C1440	Dickinson, Roger...	B1694	Gowen, Wm....	B1680
Bryson, Samuel.....	B1700	Dickstein, Dr. L...	B1698	Greiss, H.....	C1500

RATINGS to 10/21/58 cont'd.

Griggs, J. Dorr.....	C1362	Kelso, B.....	C1460	Mahood, D.....	C1532
Gross, Dr. B.....	B1772	Kennedy, E. R.....	C1530	Maier, W.....	A1860
Guiliani, D.....	B1778	Kennedy, Wm.....	C1500	Mancuso, D. V.....	B1624
Grosz, M.....	C1534	Kent, David W.....	B1748	Malmstrom, T.....	C1564
Guzman, R.....	B1744	Kent, Glen.....	C1460	Mangkusuwondo, Dr.	B1768
Halcrow, A.....	B1700	Kester, E.....	C1310	Mann, R.....	C1550
Haley, A.....	C1496	Kibler, F. E.....	C1500	Marmor, J.....	A1890
Hall, J. H.....	A1826	Kilker, S.....	B1610	Marnell, E.....	B1700
Hall, John.....	A1826	King, H.....	A1830	Marquardt, J.....	C1550
Hall, Wm.....	B1644	King, L.....	C1532	Mattingly, M. E.....	B1732
Hampton, J.....	B1734	Kiroff, Dr. L.....	B1750	Mayer, E.....	C1476
Hansen, D.....	A1858	Kitabayashi, S.....	B1604	Mecorney, J. W.....	A1830
Hardy, D.....	B1668	Kline, H. G.....	C1504	Michaels, E. P.....	C1472
Hartwig, G.....	A1834	Knack, A.....	B1700	Miller, Patsy.....	C1500
Hathway, C. W.....	B1706	Koenig, Wm.....	C1416	Miller, Paul.....	C1536
Hatschek, Dr. O.....	C1392	Kontrat, W.....	B1750	Mingus, W.....	C1590
Hawksworth, E.....	C1468	Krause, D.....	A1962	Monte, J. P.....	B1700
Hayden, E.....	C1466	Kreft, J.....	C1348	Montfort, W.....	B1690
Heaton, Chas.....	B1796	Kresy, G.....	C1510	Morison, H.....	A1804
Hendricks, W.....	A1906	Kupka, Dr. E.....	A1806	Moyer, Wm.....	C1476
Henry, R.....	C1500	Kupperberg, C.....	C1536	Mueller, K.....	C1284
Henry, R. L.....	C1500	LaBrash, G.....	C1540	Mulligan, D.....	B1664
Hepburn, J.....	C1366	Ladd, L.....	C1556	Myers, J.....	A1824
Herman, D.....	C1424	Lagomarsino, R.....	B1692	Nielsen, Frank.....	C1564
Hill, A. B.....	C1578	Lamon, R.....	B1688	Nolte, J.....	B1690
Hill, Leonard.....	A1956	Larson, M.....	B1682	Oberg, F.....	C1322
Hoffman, D.....	C1554	Larue, J.....	C1512	Oberg, R.....	B1790
Hoisington, Bill.....	B1692	Lasich, J.....	C1564	Ojeda, D.....	C1534
Hollis, Jack.....	C1326	Launer, H.....	B1680	Olvera, F.....	B1650
Holman, R.....	C1416	Lawrence, P.....	C1330	O'Neill, M.....	C1440
Holmes, Bob.....	C1458	Leddy, F.....	A1954	Osburn, E.....	A1988
Hoppe, Karl.....	C1470	Leete, C. H.....	C1590	Osternig, L.....	C1524
Hoppe, Roy.....	A1822	Leonard, L.....	C1480	Partomsky, A. M.....	B1658
Huff, J.....	C1370	Leviskis, N.....	B1674	Parvu, A.....	B1760
Hullett, T.....	C1570	Lisker, Wm.....	B1686	Pattullo, W.....	B1764
Huneke, C.....	B1736	Lombardi, V.....	C1438	Perry, L. E.....	B1600
Hunting, B.....	C1416	Lorentzen, D.....	C1500	Peterson, G.....	B1754
Hurlbert, R.....	C1538	Loveland, Chas.....	B1754	Plaut, Dr. E.....	A1912
Hurley, J.....	C1598	Lund, J. L.....	A1850	Pohoriles, B.....	C1372
Hutch, Dr. J.....	B1684	Lund, R.....	C1568	Potter, W. W.....	B1700
Igra, Dr. L.....	B1662	Lunn, Lars.....	B1684	Poulson, S.....	A1886
Ingram, L.....	C1408	Lutz, W.....	C1500	Powell, J.....	C1428
Jacoby, R.....	B1650	Lydeard, G.....	C1358	Quillen, J.....	A1852
Jens, Wm. O.....	A1826	Lynch, Frank.....	C1486	Radinsky, A.....	B1600
Johnson, A.....	A1950	McCoy, P.....	C1500	Railey, I.....	B1644
Johnson, J. T.....	C1342	McGinley, Chas.....	B1708	Ramirez, J.....	C1564
Jolly, F.....	C1396	McLain, B. B.....	C1500	Randel, C.....	C1314
Joplin, S.....	A1918	McLeod, Dan.....	A1872	Rawley, W. G.....	C1474
Joplin, W.....	B1616	McLeod, Nancy.....	A1858	Ray, M.....	B1600
Jungsten, C.....	C1458	McPhillips, H.....	C1500	Raynal, E. L.....	C1360
Kaliczak, J.....	C1550	MacGregor, E. R.....	C1494	Rebold, W.....	A1816
Kalisch, J.....	A1982	MacNeill, A.....	B1734	Reed, T.....	C1512
Kameny, Dr. L.....	B1610	Maguire, J.....	A1808	Reynolds, E.....	B1700
Keith, E.....	B1670	Mahan, L. D.....	A1922	Reynolds, J.....	C1500

RATINGS to 10/21/58 cont'd.

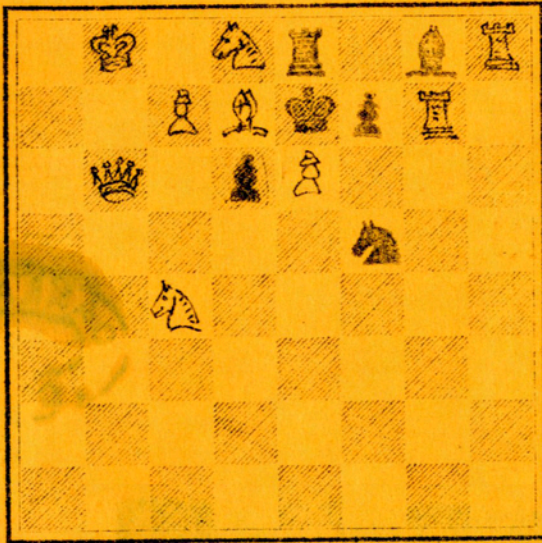
Richter, R.....	Cl488	Steinmeyer, R.....	Cl460	Wilson, W.....	B1618
Ringle, Fred.....	Cl498	Stevens, Wm.S.....	Al952	Wolfe, Chas...	Cl500
Rivera, M.....	Cl388	Stichka, J.....	Al914	Wolff, Wm.....	B1668
Roberts, L.....	Cl544	Stigler, S.....	Cl428	Wong, B.....	B1636
Robinson, G.....	B1670	Stoltenberg, G.E...	B1700	Wong, F.....	Cl512
Robinson, Dr. J.M...	Cl560	Stone, D.....	Cl382	Worden, M.....	B1660
Rohwer, P.....	B1758	Strangman, J.L.....	Cl476	Yaeger, E.....	B1682
Romander, H.....	B1734	Sutherland, D.....	B1728	Younger, F.C..	B1602
Rosenbaum, H.....	Al918	Sweeney, G.....	B1728	Zipfel, L.....	B1664
Rosenstein, Dr. L...	Cl596	Switzer, T.....	B1612	Zucker, S.....	Cl504
Roux, L.E.....	Cl500	Talcott, L.....	Al988	Zwonkin, T....	Al800
Rubio, R.....	B1786	Tally, D.....	Cl526		
Ruderman, S.....	Cl500	Taylor, P.....	B1676	Notes from the Desk	
Rupp, E.....	B1726	Thacker, R.....	Al956	'of the T.D.	
Sacre, H.....	Cl294	Thackwell, H.L.....	B1630	'The Annual Meeting	
Salin, L.....	Cl470	Thurston, B.E.....	Al808	'of Team Captains	
Salatko, V.....	Cl488	Tobin, Dr. John.....	Cl546	'was held on Friday	
Saló, E.....	B1754	Tomori, L.....	B1758	'10/24/58 with 19	
Samuelson, R.....	Cl478	Tower, Dr. H.....	B1656	'Captains present.	
Sanderson, K.....	Cl448	Tracy, T.....	Al786	'There will be 4 to	
Sarafian, L.....	Cl434	Treleven, J.....	Cl464	'5 leagues this	
Savage, J.....	Cl500	Trenberth, R.....	Al840	'Winter Schedule and	
Sax, K.....	Cl434	Tripodes, G.....	Cl374	'in addition there	
Schmerl, J.....	Al916	Tripodes, T.P.....	B1762	'will be a "C" league	
Schmiedek, P.....	B1612	Tullis, L.....	Cl496	'in the Eastbay with	
Schnoor, Dr. E.....	Cl540	Turner, A.C.....	B1798	'a possible one for	
Schoena, F.,.....	Al816	Turner, L.....	B1740	'El Camino Real.	
Schopero, P.....	Cl568	Turner, R.....	Al884	'We plan to launch	
Schroth, C.....	Al962	Udman, S.....	B1606	'all teams about the	
Schure, L.....	Al826	Ullman, S.....	B1700	'middle of November.	
Schwartz, M.....	Cl464	Vayssie, P.....	Cl476	'	
Scott, E.....	Cl500	Veguilla, J.A.....	Al844	'	
Scott, L.....	Cl500	Veith, Chas.....	Cl554	'Many thanks from	
Seavey, W.....	Cl534	Vogl, Lt.Col. O.J...	B1672	'all of us to Mr.	
Sevel, S.....	Cl588	Waite, R.....	Cl458	'Ernest Bartholomew	
Shannon, C.....	Al846	Wald, M.....	Al820	'and the Hayward	
Shorman, R.....	Cl574	Wang, A.....	Al894	'Chess Club for a	
Siegel, J.....	Cl540	Ward, E.....	Cl588	'most original and	
Simanis, E.....	E2046	Watson, E.J.....	B1700	'pleasant East-West	
Slocum, L.H.....	Cl500	Watson, J.J.....	Al800	'Match.	
Smith, G.Jr.....	B1772	Watts, D.A.....	Cl460	'	
Smith, Harold.....	Cl500	Weed, E.G.....	Al870	'	
Smith, James H.Jr...	B1726	Weil, A.M.....	B1790	'Don't forget to re-	
Smith, John B.....	B1746	Wheeler, L.....	Cl518	'serve December 13th	
Smith, Ted.....	Cl476	Whisler, Wm.....	E2000	'and 14th for CFNC	
Smook, Roger.....	E2056	White, J.P.....	Cl596	'Chess Tournament @	
Snavely, Ted.....	Cl542	White, L.D.....	Cl400	'the Sheraton-Palace.	
Sobol, O.,.....	B1696	Wickersham, A.....	B1680	* * * * *	
Sonne, G.....	Cl292	Wiebe, R.....	B1710	'Three Cheers for	
Spellar, J.B.....	B1700	Wilbur, H.D.....	B1700	'our new Treasurer	
Spitz, C.....	B1706	Williamson, A.....	B1700	'Mrs. Virginia M.	
Sprague, W.F.....	B1788	Willis, A.....	Al800	'McGinley.....	
Squire, L.D.....	B1750	Willis, H.....	B1700	\$\$\$\$\$\$\$\$\$\$\$\$\$\$\$\$	
Stegman, P.,.....	Cl332	Willox, Loli.....	Cl500	\$\$\$\$\$\$\$\$\$\$\$\$\$\$\$\$	

THE PROBLEM PAGE

Anyone who knows the moves of chess can enter this problem competition with a good possibility of winning a very nice prize. There will be problems to accommodate all range of tastes and talents. Send key moves to James Schnerl, 20 Greenbank Avenue, Piedmont 11, and be sure to include your own name and address. Contributions from readers will be very welcome. Good luck!

Problem No. 1
S. Leites

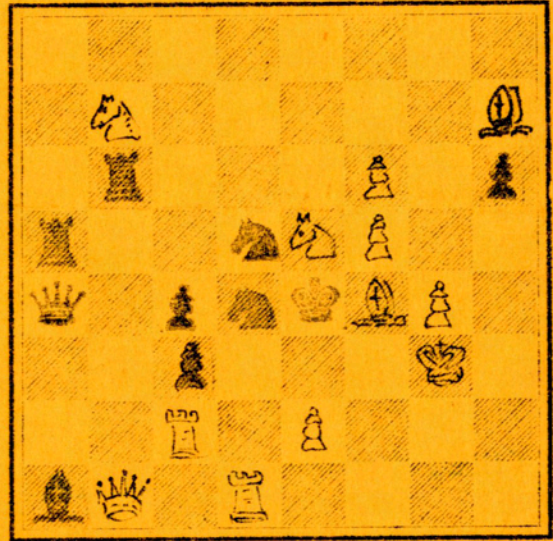
BLACK 6



WHITE 9
white mates in two.

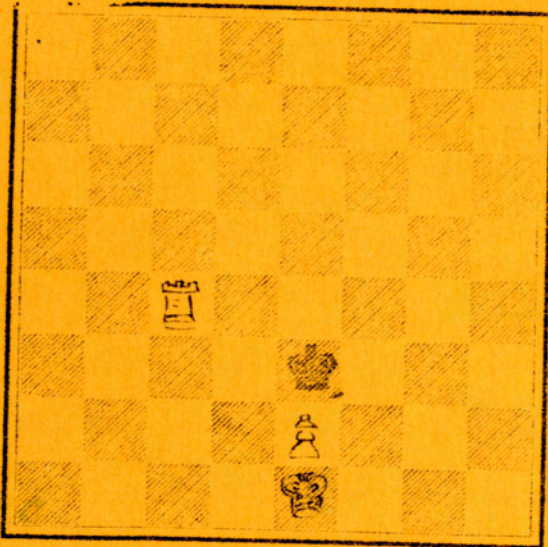
Problem No. 2
Schnerl

BLACK 11



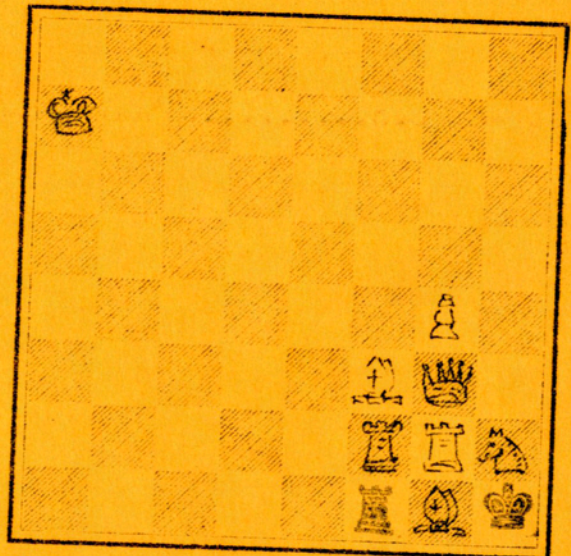
WHITE 12
white mates in two

Problem No. 3



WHITE 3
white mates in four.

Problem No. 4



WHITE 8
white mates in three

10/2/82

THE RECEIPT

Faded, illegible text at the top of the page, possibly a header or introductory text.

CHESS FRIENDS OF NO. CALIF.
2763 Chelsea Drive
Oakland 11, California



William O. Jens
2956 Joaquin Miller Rd.
Oakland 2, Calif.

RETURN POSTAGE GUARANTEED

