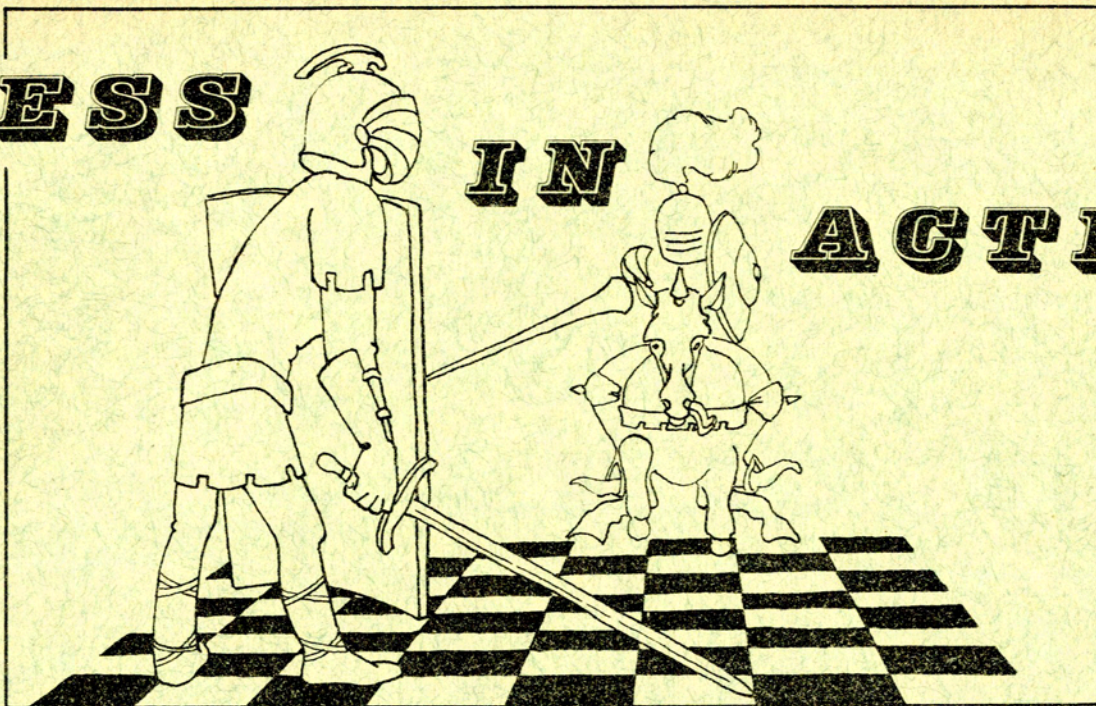


CHESS

IN

ACTION



***** SEPTEMBER - OCTOBER, 1959 *****

Published by Chess Friends of Northern California, A Charter Member of the United States Chess Federation. Edited by John E. Almond, 14 Bates Boulevard, Orinda, California. Issued free to members. Annual subscription \$2.00 per annum.

WE WERE HAPPY TO HEAR:

That good Chess Friend ARTHUR WANG, of Berkeley, California, beat defending champion, Raymond Weinstein, in the 1959 U.S. Junior Championship.

That there was a record turn-out at SONOMA CHESS FESTIVAL to honor our George Koltanowski.

That Chess Friends membership continues to soar.

That our new typewriter had at last arrived. (This is it!)

That we were going to have a Chess Tournament in San Jose, late September.

That there were many indications that this Winter would bring an unprecedented number of successful Chess Tournaments and Meetings.

That the EAST-WEST Match was to be held on October 18th. But keep your eyes on the San Francisco Chronicle in case there is a change.

Good pawn snatchings to you all.

VALLEY OF THE MOON CHESS FESTIVAL, SONOMA

The attendance and participation exceed every expectation!

The Valley of the Moon Chess Festival, sponsored by the Sonoma Valley Chamber of Commerce, was held on Sunday, August 9th, 1959 in Sonoma, California, with the largest attendance ever - 253 players and over 1,000 spectators. With gorgeous weather, conditions were ideal for playing and enjoying chess outdoors. This year, the festival was dedicated to George Koltanowski, International Chess Master, and his many Sonoma Valley and Sonoma County friends and the Chamber of Commerce presented him with a beautiful Golden Hour Precision electric clock, duly engraved, in appreciation of his annual direction of this outstanding festival, the only one of its kind in the United States. Trophies, wines and cheeses were donated by the merchants of Sonoma. The Oakland YMCA Chess Club also presented Mr. Koltanowski with an unusual small chess set of exquisite craftsmanship, a gift in appreciation of his work and endeavours on behalf of Chess.

A new feature this year was a special invitational tournament for Expert, Class A, B, and C groups, which started Thursday prior to the Sunday festival. In a special problem-solving competition, there were 400 replies and sixteen books and one hundred magazines were mailed to the winners. Full results now follow.

EXPERT INVITATIONAL TOURNAMENT	Points
1. David Krause, Palo Alto, Trophy and check	5
2. John Hudson, Mather Air Force Base, Check	4 $\frac{1}{2}$
3.) Erik Osbun, Santa Rosa, Check	4
4.) Robert Dickinson, Redwood City, Check.	4
5.)Don Sutherland, San Francisco	3
6.)Leonard Hill, Mountain View	3
7. Mrs. Mabel Burlingame, Phoenix, Arizona	2 $\frac{1}{2}$
8. Roy Hoppe, San Francisco	2
A. INVITATIONAL	
1. David Bogdanoff, Redwood City, Trophy	6
2. Robert Moore, Red Bluff Book	3 $\frac{1}{2}$
3. Robert Oberg, Richmond Book	3
4. Jerry Peterson, San Lorenzo	2 $\frac{1}{2}$
5. Dale Gillette, Davis	2 $\frac{1}{2}$
6. Robert Lee Henry, San Mateo	2
7. Ernest Bartholomew, Hayward	1 $\frac{1}{2}$
B. INVITATIONAL - GROUP 1.	
1. Robert Byrne, San Francisco	4
2. Tom Maser, Pleasant Hill	3
3. Tom Dorsch, Oakland	3
4. E. Jaruzel, San Francisco	2 $\frac{1}{2}$
5. Russell Boates, Mill Valley	2 $\frac{1}{2}$
6. William Gowen, Mill Valley	0
B. INVITATIONAL - Group 2	
1. George La Brash, San Francisco	3
2. Norman Morey, San Francisco	3
3. Mrs. M. Bartholomew, Hayward	2
4. Steve Hoffman, Hayward	1
5. David Weamer, Berkeley	1

continued on the next page.....

SONOMA CHESS FESTIVAL - FULL RESULTS (Continued)

PLAY-OFF WINNERS "B"

1. Robert Byrne, San Francisco, Trophy
2. George La Brash, San Francisco, Book
3. Tom Maser, Pleasant Hill, Book
4. Norman Morey, San Francisco, Book.

C. INVITATIONAL

	Points
1. Raymond Schutt, Hayward, Book	4 $\frac{1}{2}$
2. W. Hollingsworth, San Mateo, Book	4 $\frac{1}{2}$
3. M. O'Neill, El Sobrante	4
4. R. McCluney, San Leandro	3 $\frac{1}{2}$
5. Elmer Burlingame, Phoenix, Arizona	3
6. Mrs. J. Byrne, San Francisco	1 $\frac{1}{2}$
7. Mike Singleton, Hayward	0

Trophies were also won by:

William S. Scott, Atlanta, Georgia - Farthest Distance
 Magnusson's Health Club, San Francisco } Clubs with
 Oakland YMCA Chess Club, Oakland } most players.
 Woman: Miss Goldie Erus, San Francisco
 Junior: Don Hemovich, Mill Valley
 A: Dr. Ben Gross, San Francisco) Best score of group
 B: Charles Hathway, Irvington) of four players.
 C: Henry Hess, Sonoma)

GROUP RESULTS:

1. Mrs Pat Gowen, Mill Valley; 2. Miss G. Eurs, San Francisco; 3. Mrs. C. Hathway, Irvington; 4. Mrs. J. Byrne, San Francisco; 5. J. Taylor, San Bruno; 6. P. Wells, San Francisco; 7. D. Hemovich, Mill Valley; 8. DeJarnatt, Pacifica; 9. Leif Magnusson, San Francisco; 10. Rydy Greulich, San Mateo; 11. O. Bender, Sacramento; 12. W.S. Scott, Atlanta, Georgia; 13. George Farly, Berkeley 14. R.L. Henry, San Mateo; 15. J. Jaruzel, San Francisco; 16. Dr. Ben Gross, San Francisco; 17. R. Thacker, Richmond; 18. Lou Meyer, Potter's Valley; 19. Bart Miller, Sausalito; 20. B. Bowman, Modesto, 21. E. Burlingame, Phoenix, Arizona; 22. K. Maxwell, Walnut Creek; 23. A. Bushby, Willits; 24. R. Denton, San Francisco; 25. Dr. J. Tobin, San Francisco; 26. N. Dodge, Willits; 27. Robert J. Henry, San Mateo; 28. W. Hollingsworth, San Mateo; 29. Dr. N. Hubbard, San Francisco; 30. P. Ladyman, Vacaville; 31. R. McCluney, Hayward; 32. W. Rawley, San Francisco; 33. R. Radl, San Francisco; 34. R. Michalski, Daly City; 35. L. Richardson, Walnut Creek; 36. R. B. Lund, Berkeley; 37. P. Barry, Walnut Creek; 38. P. Schmiedek, Talmadge; 39. T. Dorsch, Oakland; 40. W. Leeds, San Francisco; 41. C. Hathway, Irvington, 42. H. Hess, Sonoma; 43. M. Harris, San Francisco; 44. C. Hutchason, San Francisco; 45. R. Jordan, Berkeley; 46. N. Bagett, San Bruno; 47. Tom Maser, Pleasant Hill; 48. G. Ross, San Lorenzo; 49. L. Turner, Concord; 50. R. Shorman, Hayward; 51. John Smith, Richmond; 52. Bill Singleton, Hayward; 53. R. Willis, San Bruno; 54. R. Zellen, Oakland; 55. Joe Mizrachi, Los Angeles; 56. Colonel C. Peek, San Francisco; 57. Henry Gross, San Francisco; 58. A. Haley, Nevada City; 59. R. McCollough, San Francisco; 60. M. Karr, San Francisco. Please forgive us for any spelling mistakes.

David Krause, Lt. John Hudson, and Mrs. Mabel Burlingame played the Simultaneous Exhibitions.

***** CHAMPAGNE CHESS *****

David Bogdanoff and Robert Dickinson, of Redwood City, have suggested that we publish a regular column of annotated games. Their first effort, which I am sure you will like, is a Ruy Lopez played in Russia, in 1954.

White: Vacikov

Black: Taimanov

1. P-K4 P-K4
 2. N-KB3 N-QB3
 3. B-N5 B-B4

The classical defense, which is rarely seen in tournaments today, is still quite playable.

4. O-O More usual here is P-B3.
 ... N-Q5!

According to Keres, in "Theorie der Schacheroffnungen", this move gives black equality in a simple and easy manner.

5. NxN If 5. B-R4, then NxNch; 6. QxN, N-B3.

- ... BxN
 6. P-B3 B-N3
 7. P-Q4 P-QB3
 8. B-R4

Keres only considers 8. B-QB4, P-Q3; 9. B-K3, N-B3; 10. N-Q2, O-O; 11. P-KR3, Pxp; 12. Pxp, P-Q4; with at least equality for black.

- ... P-Q3
 9. N-R3 Q-K2? Better possibilities are N-B3 and N-K2.

10. P-Q5 White starts a powerful attack, taking advantage of black's lack of development and the pin of black's QBP.

- ... B-Q2
 11. N-B4 Threatens 12. Pxp
 ... P-QB4 If B-B2, 12. Pxp, Bxp; 13. BxBch, PxB; 14. P-QN3 followed by 15. B-R3 with advantage for white.

12. P-B4! Threatening 13. Pxp, Pxp; 14. P-Q6, Q-K3; 15. BxBch, KxB; 16. Q-R4ch followed by 17. NxB.

... P-B3 Not BxB; 13. QxBch, Q-Q2; 14. NxB, and white wins a piece.

13. Pxp QPxp Better than BPxp because of 14. B-KN5, N-B3; (14. ... QxB; 15. Nxpch, K-K2; 16. R-B7ch, KxN; 17. RxBmate) 15. BxN, PxB; 16. Q-R5ch, K-Q1; 17. BxB and white will win black's KBP.

14. P-Q6 Q-K3
 15. BxBch QxB
 16. Nxp! Q-K3 On 16. ... PxN; 17. Q-R5ch wins.

17. Q-R4ch It appears that 17. Q-R5ch, P-KN3; 18. Nxp, Q-B2; 19. N-B4 also wins for white.

- ... K-Q1
 18. N-B4 R-B1 What else?

19. NxB PxN
 20. P-Q7 R-B2 Again forced.

21. Q-R8ch Kxp
 22. R-Q1ch K-B3
 23. B-B4 N-K2 Desperation.

24. QxR N-N3
 25. BxR NxQ
 26. R-Q6 QxR
 27. BxQ KxB

28. R-Q1ch and white won easily.

Are Chess Players Mystery Lovers?

Mr. Harold Statton of Los Angeles asks this question and notes that, in the last list of Chess Friends, the membership includes:

1. A "Sherlock"
2. A "Holman" (but alas, no "Holmes".)
3. Two "Watsons"
4. A "Hudson"
5. A "Doyle".

CFNC Interclub Championship

The Oakland Hilltoppers beat Redwood City the last week of August and shares first and second place with the Richmond Chess Club.

Congratulations to the Bettencourts

Mr. and Mrs. S. Bettencourt, formerly of Pacifica, have moved to San Francisco, where Mr. Bettencourt has acquired his own barber shop. It is located at 1815 Balboa Street between 19th and 20th Avenues. We extend our best wishes for continued success and know that Mr. Bettencourt will be delighted to see and greet all members of Chess Friends.

Oakland YMCA Championship

The first club championship of this most successful club has just finished with the following results:

- Group A
1. Ronald Thacker
 2. Robert Trenberth
 3. John Veguilla
- Group B
1. Tom Dorsch
 2. K. McGillicuddy
 3. Jack Powell
- Group C
1. Don Thompson
 2. Robert Lund

A prize distribution was held at the completion of the tournament. New club tournament is now in progress. The Club meets on Friday evenings, 2101 Telegraph Ave., Oakland. New members always welcome. Contact Jack Powell.

An Interesting Problem

This is not a Chess problem but a problem used by corporations to test employees to see whether they have the right sort of logical minds to become Programmers in Electronic Computer Departments. It takes some deep thinking to solve. Par is one hour. Here it is:

You have twelve balls, one of which is either lighter or heavier than the rest. That is, the other eleven weigh exactly the same. You have a pair of simple scales that do not register the weight. You have no weights.

The problem is to work out how you can find the "oddball" in THREE and THREE ONLY weighings. For example, if you put three balls on one side and three on the other side they weighed the same, you would know the oddball was in the remaining six. Get the idea?

The solution is tricky but it can be done in THREE and THREE ONLY weighings.

French Defense

Here is a game in algebraic notation for those who like to practice it. It was sent in by Mr. Milor Taborsky of Pebble Beach.

White: M.J. Taborsky
Black: Colin Chambers

1. Pd4, Pe6; 2. Pe4, Pd5; 3. Nc3, Pc6; 4. Pe5, Bb4; 5. Qg4, Bf8;
6. Nf3, Pf6; 7. Pxf6, Nxf6; 8. Qh4, Be7; 9. Bg5, Ph6; 10. Bd3, O-O; 11. Bxh6, Nel4; 12. Qg4, Bf6; 13. Nxe4, Pe5; 14. Qg6, Qc7; 15. Neg5, Resigns.

Mr. Taborsky says "it once again shows the dangers which confront Black when he fails, in good time, to get rid of the White center pawns."

BEATNIC NO - CHESSNIC YES

SAN JOSE OPEN TOURNAMENT

A Chess Tournament, sponsored by Chess Friends of California, will be held at the San Jose Y.M.C.A., 1717 The Alameda, San Jose on the week-end of September 26th and 27th. The first round starts at 12 o'clock on Saturday, September 26th. We are optimistically hoping that this copy of the magazine will be in your hands before this date. Don't be surprised if you find the stop-press results of this Tournament on another page!

EAST - WEST MATCH

Here's one that stands a better chance than the above. The Annual East-West match is slated to take place on Sunday October 18th, 1959 at 12.30 p.m., at the Bret Harte School, 'D' and Main Streets, Hayward - Hayward Chess Club playing host.

1955.....West

1956.....East

1957.....West

1958.....West

1959..... ??????????

Come on East. Let's try and get this score evened up a bit!!!!!!

Dr. E. T. Dana Wins Chess Title

Among 13 experienced chess players competing in the 1959 tournament sponsored by the Los Altos Chess Club, Dr. E. T. Dana, a retired university professor, emerged the winner by defeating all his opponents. Dallas Burch was second with the loss of only one game and Carl Erickson, a resident of Palo Alto, was third with the loss of three games together with a draw. Arden Hill and Carl Newman tied for 4th place each winning 8 and losing 4. The Los Altos Chess Club meets on Thursday evenings at Covington School (Room 18) and extends a hearty invitation to all.

CHESSE FRIENDS OF NORTHERN CALIFORNIA

Secretary: Mrs. Virginia McGinley, 2763 Chelsea Drive, Oakland 11, Calif.
Field Director: George Koltanowski, International Master and Blindfold Champion, 3049 Laguna St., San Francisco 23, Calif. JORDAN 7-2410.
Ratings Director: Chuck McGinley, 2763 Chelsea Drive, Oakland 11, Calif.
Tournament Director: William S. Stevens, 2005-35th Avenue, San Francisco, California.

THE EDITOR APOLOGIES TO ALL WHOSE NAMES HE HAS MISSED OUT, MISSPELLED, OR GENERALLY INSULTED. ALL SUCH ABERRATIONS ARE QUITE ACCIDENTAL...

Los Altos Proves Chess No Slow Game

The results of this ten-second tournament are not to hand but the announcement, culled from the newspaper is a suggestion to other clubs as to how to continue to keep up club interest.

All moves are made within 10 seconds as timed by an automatic clock and an entire tournament can usually be completed within one evening. Such competition is full of surprises and players who excel in the thoughtful analysis of positions, when time is not pressing, are not necessarily proficient in 10-second chess. Nor does age appear to be a material factor. An agile mind and previous experience in playing at this fast rate are the best assets for success in this type of tournament.

STOP-PRESS - RESULTS ON ABOVE 10-SECOND TOURNAMENT

First Section was won by David Krause with L. Hill second.

The Second Section (of C and unclassified players) was won by W. Hartley with W. Byers second.

LOS ALTOS CHESS CLUB HAS A PUBLICITY DIRECTOR, DALLAS S. BURCH, WHO SAYS: LOCAL PUBLICITY MAINTAINS INTEREST AND HELPS TO RECRUIT NEW MEMBERS.

ANOTHER ANNOTATED GAME FROM THE DALY CITY EXPERT CHESS TOURNAMENT *****

1.	P-Q4	P-KB4	WHITE:	24.	RxB	N-B7
2.	P-KN3	N-KB3	Erik Osbun	25.	RxP	N-Q5
3.	B-N2	P-KN3 (a)		26.	BxN	PxB
4.	N-KB3	B-N2	BLACK:	27.	QR-K1	RxR
5.	0 - 0	0 - 0	Art. Wang	28.	RxR	R-K1
6.	P-B4	P-Q3		29.	Q-Q5(m)	RxR
7.	N-B3	P-B3 (b)	"DUTCH	30.	QxR	QxQ
8.	Q-B2(c)	K-R1 (d)	DEFENSE"	31.	NxQ	P-Q6
9.	P-N3	Q-B2 (e)	Aby	32.	K-B1 (n)	B-B6
10.	B-QR3	R-K1	annotated	33.	N-B5	P-Q7
11.	QR-Q1	P-QR4	by	34.	K-K2	P-N3
12.	N-KR4!	N-R3	Erik	35.	N-K4	P-QB = Q ch.
13.	P-K4 (f)	N-QN5	Osbun	36.	KxQ	B-Q5
14.	Q-Q2	PxP	Winner	37.	K-K2	K-B2
15.	NxKP	NxN	of the	38.	K-Q3	B-K4
16.	KBxN	B-R6 (g)	First	39.	P-B4	B-N7
17.	KR-K1	P-K3 (h)	Expert	40.	N-Q6ch	K-K3
18.	B-N1!(i)	P-B4	Tourney	41.	N-B8	K-B4
19.	PxP	PxP		42.	P-KR3	B-R6
20.	Q-N5!(j)	Q-B2?(k)		43.	NxP	B-B4
21.	NxPch	K-N1 (l)		44.	N-Q5	B-B7
22.	N-B4	B-B4		45.	P-N4 ch	Resigns.
23.	B-N2!	BxB				

- (a) An interesting system. Will black solve the problem of his ensuing cramped development, of his incurred weak pawn structure? Reasonable chances are afforded if white plays weakly.
- (b) 7 ... N-B3; 8. P-Q4, N-K4 appears to solve the development problem, but after 9. NxN, PxN; 10. P-K4 White produces targets.
- (c) An important game (Pirc - Fuderer, Yugoslav Championship triangular match, 1955) continued 8. P-N3, Q-B2; 9. B-QR3, P-QR4; 10. R-B1, N-R3; 11. P-Q5! with advantage for white. 8. Q-B2 foregoes the prophylactic move 11. P-Q5 and prepares to counter Black's projected ... P-K4 with counterplay on the Q file (11. P-Q5 counters ... P-K4 by PxP e.p. with pressure on the QP.) 8. Q-B2 also reserves an option in the development of the QB. For example, if Black attempts ... P-Q4, the QB will be stronger on KB4. Herein lies the "refutation" of 8. P-N3 E.g. 8 ... R-K1!; 9. B-QR3(?) P-K3! followed by ... P-Q4. It is notable that Black has achieved a "Stonewall" formation without having to exchange his vital KB.
- (d) Does this move anticipate P-K4 (as I played against David Krause in a similar position in Round 3)? Here it is just a loss of tempo. 8 ... Q-B2 is better. Or, if black anticipates the previous not with 8... R-K1; 9. P-Q5! Q-B2; 10. R-Q1 suffices.
- (e) If 9. R-K1; 10. R-Q1, P-K3; 11. R-N1! P-Q4; 12. PxP, KPxP; 13. B-B4 where 9. P-N3 is canceled by 8. ... K-R1. After the text ... P-Q4 is no longer playable.
- (f) White has obtained a clear advantage.
- (g) Black must develop as quickly as possible.
- (h) Relatively best.
- (i) Forcing further weakening, because if 18...N-R3?; 19. Q-B4! (threatening both 20. QxP and 20. NxPch); P-K4; 20. NxPch! K-N1; 21. Q-R4 etc.
- (j) 20. NxPch? nets three pawns for the piece but loses the initiative.
- (k) A horrible blunder. Necessary was 20...B-B4. White would continue 21. R-K2, P-N3; 22. QR-K1, Q-B2; 23. B-N2! forcing 23...QBxB whereupon White can increase the pressure on the KP.
- (l) 21...PxN; 22. DxB and 23. Q-R5 ch.
- (m) More threats cause black to chop more wood. e.g. 29...K-R1; 30. RxRch, QxR; 31. QxNP gives another passed pawn.
- (n) The only move

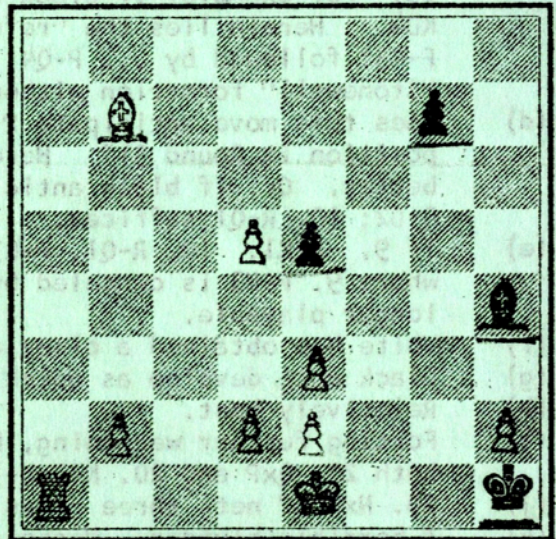
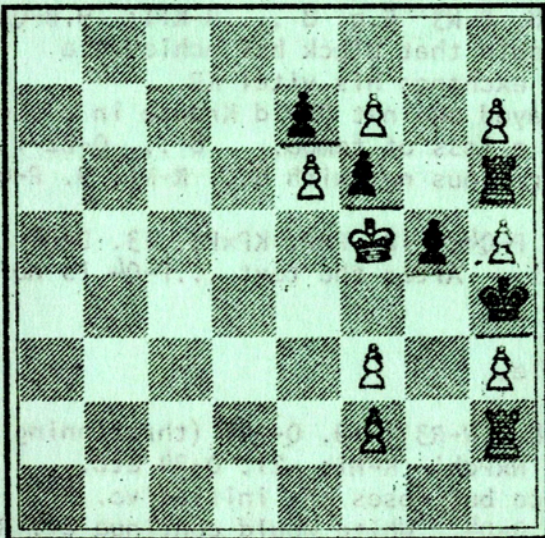
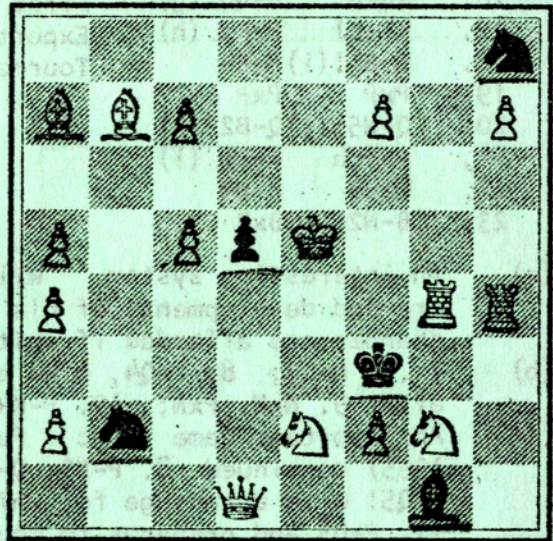
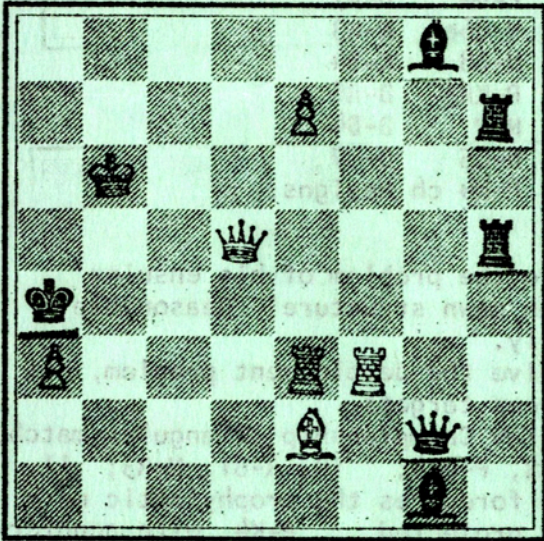
***** MATE IN ONE *****

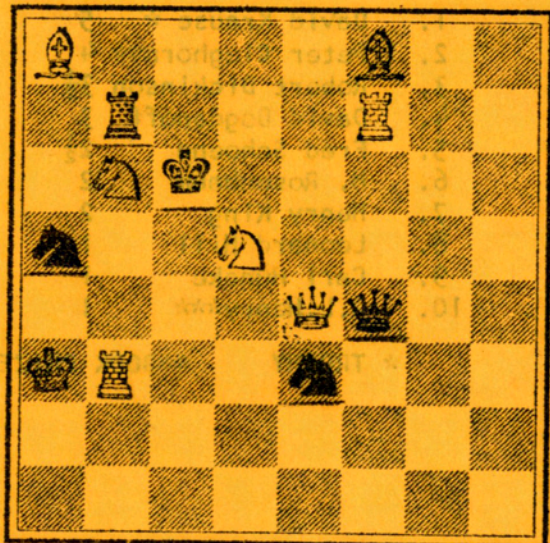
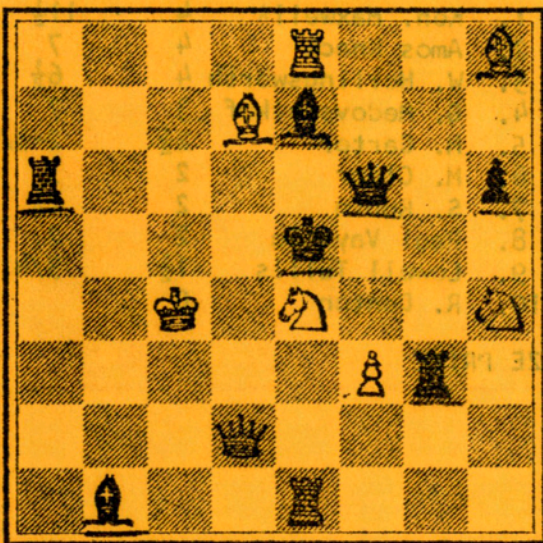
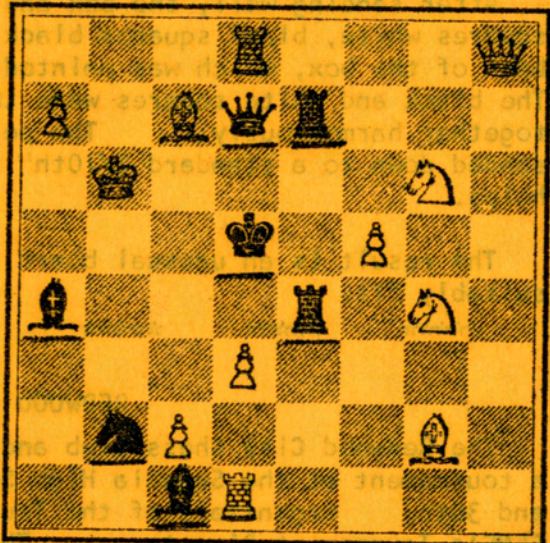
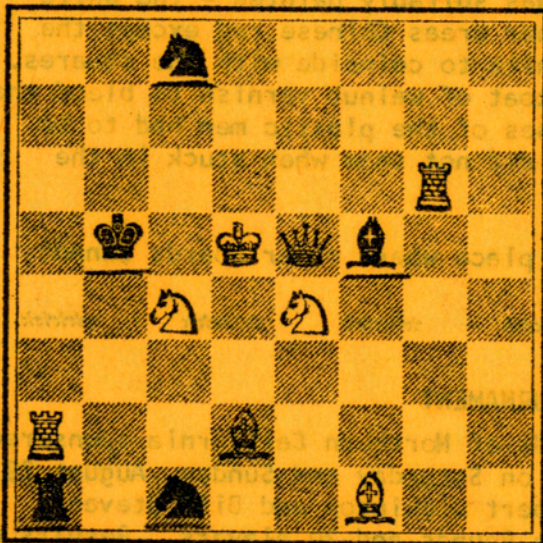
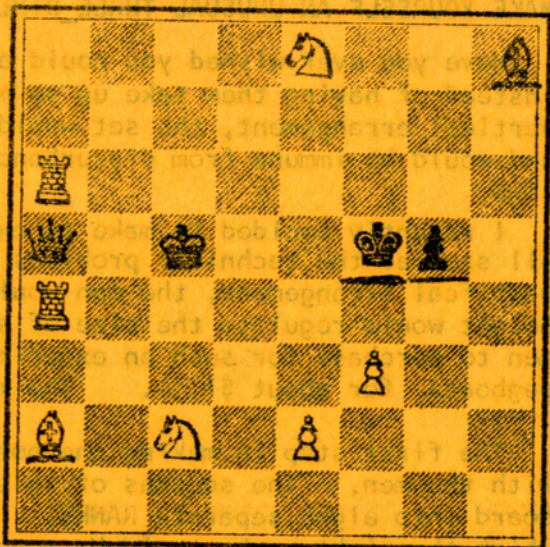
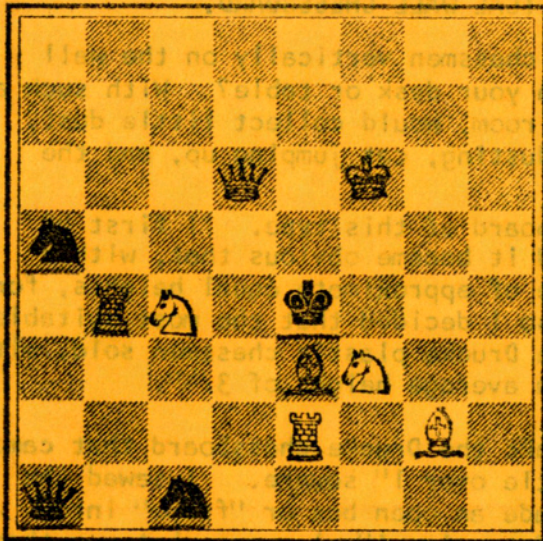
"Mate in One" sounds pretty easy, doesn't it? Well, we have collected ten problems all of which are Mate in One. Try them and see if you can get them all.

To give you a little help - don't assume that it is White who has to mate black. Don't assume either that it is White's turn to move. In other words, these little Mate In One problems are liable to pull any sort of trick.

We would be happy to receive any other Mates in One that Chess Friends might dig up. So keep your eyes open for them.

** ***** * ***** ** ***** * ***** **





MAKE YOURSELF AN UNUSUAL THREE_DIMENSIONAL VERTICAL WALL CHESSBOARD.

Have you ever wished you could arrange your chessmen vertically on the wall instead of having them take up so much space on your desk or table? With such a vertical arrangement, the set would take up no room, would collect little dust, and would be immune from disturbances such as dusting, cat jumping up, and the like.

I recently decided to make an experimental board of this type. I first of all studied the technical problems involved and it became obvious that, with a vertical arrangement, the men would have to be of approximate equal heights, for height would regulate the size of square, and so I decided that the most suitable men to purchase for such an experiment were the Drueke plastic chessmen sold, with pegboard, for about \$1.50. The men are of an average height of 3/4".

The first step in making the board was to take the Drueke chessboard that came with the men. The squares of this were a little over 1" square. I sawed the board into eight separate RANKS. I then made an open box or "frame" into which the eight ranks could be regularly spaced to give 1" clearance between them. These were then glued to the back of the box.

After sanding well, the box and chessboard was suitably painted - the white squares white, black squares black, and all other areas Chinese red except the back of the box, which was painted black and white to coincide with the squares. The black and white squares were then given a coat of walnut varnish to blend them together harmoniously. The pegs on the bases of the plastic men had to be sanded down to a standard 2/10th" so that they did not show when stuck in the holes.

The result is an unusual board that has its place where other boards cannot suitably fit.

REDWOOD CHESSCLUB TOURNAMENT

The Redwood City Chess Club and Chess Friends of Northern California sponsored a tournament at the Sequoia High School Campus on Saturday and Sunday, August 29, and 30th. Organizers of the Tourney were Robert Dickinson and Bill Stevens, CFNC's Tournament Director. There were Five Rounds and 20 players. Results were:

E-A Division
Placings

		Pts.	Ties
1.	David Krause *	5	13 1/2
2.	Peter Cleghorn**	4	8 1/2
3.	Robert Dickinson	3 1/2	6
4.	David Bogdanoff	3	4
5.	Fred Schoene	2 1/2	4
6.	H. Rosenbaum	2	2-3/4
7.	Henry King	2	2
8.	Leonard Hill	1	2 1/4
9.	Carl Huneke	1	1 1/2
10.	R.L. Henry***	1	1

D-C Division

Placings		Pts.	Ties
1.	Ken. Maxwell*	4	11 1/2
2.	Amos Knack	4	7
3.	W. Hollingsworth	4	6 1/2
4.	G. Medovschikof	3	7
5.	M. Carter	2 1/2	2-3/4
6.	M. Clear	2	3
7.	S. Rubin	2	2 1/2
8.	Paul Vayssie	2	2
9.	Lowell Tullis	1 1/2	3/4
10.	R. Denton	0	

* TROPHY

**BOOK PRIZE

***SURPRIZE PRIZE

THE AGE OF THE EGGHEAD

by
The Editor

There are four revolutions going on at the present time (apart from any that might be in progress in Cuba):

- Interplanetary travel
- Small cars
- Instant money, and
- Electronic Data Processing

Electronic Data Processing is probably the most important as far as you and I are concerned for Electronic Computers are as dependent upon people with logical-thinking brains like Chess and Go players as Dracula was dependent on human blood.

So, it seems that, for the first time in the history of these United States, the man with the brain is going to get a slight leverage on the man with the brawn. There is a great demand for Programmers - people who translate English into the peculiar language of these Electronic Brains. Oral boards are asking candidates: "Do you play Chess? Bridge? Go?" And those that can answer in the affirmative are further questioned as to their ratings or ability in such games. Prowess in these games are indicative of the right sort of logically-thinking minds that are in great demand these days and so it is only natural too, that, when the Computer teams form up and start programming, they should form Chess and Go teams so that they can occupy their lunch hours to the best advantage. Chess players (and Go players) are being developed by the dozens by these Computer groups and, once a certain amount of confidence has been engendered, they will eventually burst forth into Tournament Chess with Chess Friends.

One rather interesting thing is the strange growth in interest in the old Chinese game of "Go" (adopted by the Japanese, at a later date, who became authorities on the game). This was probably more by chance than design. Certain of the employees engaged in Computer design (including the Burroughs Datatron plant at Pasadena, California) became interested in the game and it sort of became adopted by Computer groups. This interest was stimulated by the Computer Control Company who have promulgated much information on games of logical interest including a most unusual succinct explanation of the game of GO in six pages (with diagrams).

This Summer, instead of being able to relax, the tax season behind, I became involved in one of these large Computer Installations. In fact, it has become my great pride and privilege to be the man responsible for the complete reorganization of the accounting and data processing of the County of Alameda (Second largest County in California) including the setting up of a large Central Data Processing Division with an Electronic Brain as the major item of equipment. We will soon be fairly well organized and, following what appears to be a general pattern, will be spending our lunch hours playing Chess and Go. So here is a new spawning ground of Chess players which, I know, is being duplicated in many many areas around the Country.

It might be of interest to readers to know something about these electronic "brains". Actually, they are really nothing more than electronic idiots, for they cannot think for themselves and if you tell them to do something silly they will do it. However, while being idiots they have the power to calculate at absolutely fantastic speeds and their memories (small in comparison with those of you or I) are infallible. The problem is that you and I speak in decimal language while these "brains" can only speak in binary language. That is, they only know the difference between "on" and "off" (or "0" and "1"). This is where we have a problem: we have to learn how to talk to the machines in their own very restricted language so that they will be able to produce results and statements in our own decimal (and alphabetic) language. This is not as easy as it might look on the surface.

To be continued next issue

The Annual Meeting of Team Captains was held on Friday evening September 18, 1959. C.F.N.C. will present an added attraction to "E" and "A" players this Winter Schedule. Any team sponsoring a six man team in a league may have a four man "E" team. This was readily approved, since many of our "E" and "A" players will appreciate the opportunity to play with men of equal strength on either side of the bay.

It is planned to start all leagues the middle of October. The following groups will be represented:

<u>LEAGUE</u>	<u>CAPTAIN</u>	<u>LOCATION</u>
<u>El Camino Real</u>		
Capablanca	S. Bettencourt	Marina Jr. High S.F. Thursday
Colle	W. Crabtree	Scheduled matches only
Evans	D. Farris	Parkside School San Bruno Monday
Lasker	J. Gowen	Southern Marin Recreation Center 1st Wednesday
Morphy S.Q.	C. Swagerty	Scheduled matches only
Nimzovitch	D. Farris	Parkside School San Bruno Monday
Westlake	G. Lydeard	Daly City Memorial Bldg, Daly City Tuesday
U.S.M.C.	Perry Jackson	Scheduled matches only
<u>Peninsula</u>		
Hewlett-Packard Co.	Ken Barnett	Scheduled matches only
Morphy	A. Knack	Sequoia Y.M.C.A. Redwood City Friday
San Mateo	Dr. A. Chappell	Abbott, Jr. High San Mateo Thursday
Ampex	David Keresy	Scheduled matches only
Fairchild Semiconductor	Lars Lunn	Scheduled matches only
Westinghouse	R. Fournier	Scheduled matches only
Pacifica	D. Davis	Pedro Vally School Pacifica Wednesday
Staunton	C. Erickson	Covington School Los Altos Wednesday

7:00 P.M. meeting time of clubs

To be continued next issue

4739
471
4710

N O W H E A R T H I S
O c t o b e r 2 5 1 9 5 9
S u n d a y

N O W H E A R T H I S
O c t o b e r 2 5 1 9 5 9
S u n d a y

N
O
W
H
E
A
R
A
R
N
O
W
H
E
A
R
T
H
I
S
N
O
W
H
E
A
R
A
R

N
O
W
H
E
A
R
A
R
N
O
W
H
E
A
R
T
H
I
S
N
O
W
H
E
A
R
A
R

CHESS FRIENDS of NORTHERN CALIFORNIA

CORDIALLY INVITES

ALL MEMBERS IN GOOD STANDING

TO THE

ANNUAL-EAST WEST MATCH

S U N D A Y

October 25, 1959

12:30 p.m. to
4:30 p.m.

Bret Harte School
E and Main Sts.
Hayward

Hosts: Hayward Chess Club
Prizes and Refreshments

Directions: Oakland & San Francisco - Eastshore Freeway to
Hayward, turn left on "A" to Main, right turn
to school.
Peninsula
San Mateo Bridge to Jackson, to Castro, one way
"E" St. one block to Main, right turn to school.
By Bus
Oakland #82
San Francisco "R" from Terminal.

7	Box	Score	1955	West	7
/			1956	East	/
/			1957	West	/
/			1958	West	/
/			1959	????	/

Sincerely,
OFFICERS OF C.F.N.C., per
Bill
Bill Stevens, T.D.

CHESS FRIENDS OF NORTHERN CALIF.
2763 CHELSEA DRIVE
OAKLAND 11, CALIF.

RETURN POSTAGE GUARANTEED