

# THE ORANGE KNIGHT

**VOL. 10  
NO. 3**

**1985**



**orange co. chess association:  
a non-profit organization**

CALENDAR OF EVENTS FOR 1985-86

**NOV. 16 - SAT: MILEY STASER FALL SCHOLASTIC**  
Grades 1-9. Registration 9-10 a.m. Play from 10-3 p.m. OCCA membership is required. Lower grades will finish earlier.

**JAN. 25 - SAT: KASHDAN WINTER SCHOLASTIC**  
Grades 1-9. Registration 9-10 a.m. Play from 10-3 p.m. OCCA membership is required. This is both a TEAM and an INDIVIDUAL event. Teams will consist of four or more players.

**FEB. 8 - SAT: BERNARD MORRISON SPRING SCHOLASTIC**  
Grades 1-9. Registration 9-10 a.m. Play from 10-3 p.m. 1st and 2nd place winners will qualify to play in the Orange County Scholastic Championship.

**FEB. 22 - SAT: PETERSON INVITATIONAL**  
(Orange County Scholastic Championship)  
Grades 1-9. By invitation only! Those eligible to play are the 1st and 2nd place winners of the Morrison tournament and the champions from the previous year.

NOTE: OCCA membership is \$5.00 per year. For further information call:

Dewain Barber (714) 998-5508

THERE WILL BE A \$1.00 CHARGE FOR REPLACEMENT OF LOST MEMBERSHIP CARDS IN OCCA OR FOR STUDENTS WHO DO NOT BRING THEIR OCCA MEMBERSHIP CARDS TO AN EVENT.

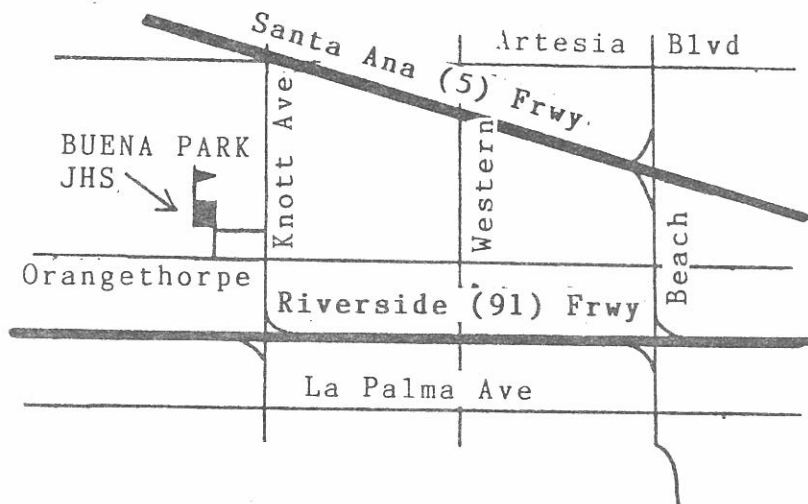


Tournaments will be held at:

Buena Park Junior High School  
6931 Orangethorpe Avenue  
Buena Park, CA

The school is at the northwest corner of Orangethorpe and Knott Avenues behind the Busy Boy's Market.

For further information call Dewain Barber at (714) 998-5508.



BRING SETS AND BOARDS!

Players who want to purchase sets or boards will be able to buy them at the playing site from:

AMERICAN CHESS EQUIPMENT CO.  
Dewain Barber  
(714) 998-5508

## TOURNAMENT RESULTS

### KASDAN WINTER SCHOLASTIC

The Kashdan Winter Scholastic Tournament had a fair turnout with 62 students competing. Only grades 1, 2, and 3 had to be combined because of too few players. The tournament was held on January 26 with awards for individuals and teams. Individual results were:

- Grade 1: Webster Evans (1st)  
Marquise Mitchell (2nd)
- Grade 2: Jason Van Dusen (1st)
- Grade 3: Aaron Friedman (1st)  
Jovan Colbert (2nd)
- Grade 4: Kamiasha Turner (1st)  
Jason Epp and Myron Zimmer (2nd)  
Nelson Goody (3rd)
- Grade 5: Mike Hartl (1st)  
Dakarai Smith (2nd)  
Claudia Goody (3rd)
- Grade 6: Richard Phillips (1st)  
Ryan Hansen (2nd)  
Andy Couture (3rd)
- Grade 7: Robert Gamble (1st)  
Oai Tran (2nd)  
David Kang (3rd)
- Grade 8: Mike Wang (1st)  
Mark Avalos (2nd)  
Mike Piatnik (3rd)

Grade 9: Doug Enright and Daniel  
Krawiec (1st)  
Shawn Camacho (2nd)  
Scott Shinedling (3rd)

Several Eighth Grade players were seeded into the Ninth Grade section and two of them won the 1st and 2nd prizes. Daniel Krawiec, a Fifth Grader, played in the Ninth Grade section and tied for 1st with Doug Enright. Sameer Bushan took a 2nd place for a Fifth Grader playing in a higher grade (Eighth), and Yvonne Krawiec received 1st place for a Third Grader competing in the Fourth Grade section. She had the highest score for the Fourth Grade section. The only perfect scores were turned in by Aaron Friedman in the Third Grade (8-0) and Mike Hartl in the Fifth Grade (7-0).

The team results were:

Elementary: La Veta (1st)  
Compton Avenue (2nd)  
Calvary Christian (3rd)

Junior High: McArthur (1st)  
Buena Park (2nd)

### MORRISON SCHOLASTIC

On February 9 the Bernard Morrison Scholastic Tournament was played. This event determines the players who compete in the Orange County Scholastic Championships. The winners in each grade were:

Grade 2: Jason Van Dusen (1st)  
Tim Cockriel (2nd)

- Grade 3: Yvonne Krawiec (1st)  
Aaron Friedman (2nd)  
Patrick Broady (3rd)
- Grade 4: Anzac Jacobs (1st)  
Jason Epp (2nd)  
Myron Zimmer (3rd)
- Grade 5: Sameer Bushan (1st)  
Ben Flamm (2nd)  
Samuel Rodriguez (3rd)
- Grade 6: Richard Phillips (1st)  
Jeff Olson (2nd)  
Marcus Zimmer (3rd)
- Grade 7: Robert Gamble (1st)  
Anh Tuan Le (2nd)  
Peter Nguyen (3rd)
- Grade 8: Division I:  
Doug Enright (1st)  
Shawn Enright (2nd)  
Guillermo Alvarez (3rd)
- Division II:  
Mike Piatnik (1st)  
Jeff Hermreck (2nd)  
Steve Moore and Tom Atiya (3rd)
- Grade 9: Scott Shinedling (1st)  
Shawn Burke (2nd)

Several players had perfect scores: Yvonne Krawiec (10-0), Anzac Jacobs (10-0), Sameer Bushan (10-0), Robert Gamble (10-0), and Mike Piatnik (8-0).

## PETERSON INVITATIONAL

The Peterson Invitational was held on February 23, 1985. This is the tournament that determines the Orange County Scholastic Champions. This year's winners are:

Grade 2: Jason Van Dusen  
Grade 3: Yvonne Krawiec  
Grade 4: Anzac Jacobs  
Grade 5: Daniel Krawiec  
Grade 6: Jeff Olson  
Grade 7: Richard Lopez  
Grade 8: Doug Enright  
Grade 9: Scott Shinedling

These players join a long line of distinguished champions. For a complete listing of past and present champions see the Honor Roll on pages 8 and 9 of this issue.

### WHERE TO PLAY THIS SUMMER

Students interested in playing in nationally rated scholastic tournaments have a choice of two places to play: **Labate's Chess Centre** in Anaheim and **The Players** in Los Angeles. Both run tournaments with prizes and both require membership in the United States Chess Federation. There is also a fee to play in their tournaments. For information, write or call:

Labate's Chess Centre  
3024 W. Ball Road  
Anaheim, CA 92804  
(714) 220-0660

The Players  
1710 Silverlake Blvd.  
Los Angeles, CA 90026  
(213) 665-5728

# ☆☆ Honor Roll 1984-85 ☆☆

Grade	1976	1977	1978	1979	1980	1981	1982	1983	1984	1985
First	H. Thias	M. Sandoval	R. Lopez	R. Lopez	G. Martin	S. Bushan		Y. Krawiec		
Second	D. Miller	H. Thias	M. Sandoval	R. Lopez	R. Lopez	J. Olson	S. Bushan	A. Jacobs	Y. Krawiec	J. Van Dusen
Third	J. Surlow	E. Oei	K. Luper	E. Guadalupe	G. Cetton	R. Lopez	J. Olson	D. Krawiec	A. Jacobs	Y. Krawiec
Fourth	T. Newkirk	J. Surlow	E. Oei	D. Hed	M. Didovic	C. Feldheim	E. Anderson	J. Olson	D. Krawiec	A. Jacobs
Fifth	K. Nishimi	T. Newkirk	J. Surlow	R. Aroda	Dena Hed	B. Malas	Doug Hed	B. Cook	E. Cabalo	D. Krawiec
Sixth	J. Lum	C. Moore	K. Prince	T. Hamo	S. Colmer	M. Roozee	S. Rykowski	C. Feldheim	R. Lopez	J. Olson
Seventh	K. Moss	J. Allen	J. Iwanaga	G. Clifford	J. Surlow	S. Colmer	J. Chang & M. Roozee	S. Rykowski	C. Feldheim	R. Lopez
Eighth	B. Bullard	K. Smith	A. Kulikauskas	J. Iwanaga	R. Trombley	G. Hayashida	S. Suh	T. Chang	S. Kitagami	D. Enright
Ninth	B. Barrett	A. Taleisnik	J. Wright	D. Redman	J. Iwanaga	E. Hernandez	M. Thompson	R. Poehlmann	T. Cha	S. Shinedling
Tenth	M. Tierney	M. Hoffner								
Eleventh	R. English	J. McClure								
Twelfth	J. Smith	E. Gan								

## HERE IT IS...!

Presented on these two pages is a summary of ten years of the best of Orange County junior chess. This year's winners join an impressive group of prior champions. And, a number of records were set or extended this year.

### MOST CHAMPIONSHIPS

The record for the most number of championships is held by **Richard Lopez** who garnered top honors in 1979, 1980, 1981, 1984 and 1985.

Close behind are **James Surlow** (1976, 1977, 1978, and 1980) and **Jeff Olson** (1981, 1982, 1984 and 1985) with four championships each.

Finally, there are three players with three championships each: **Clifford Feldheim**, **Daniel Krawiec**, and **Yvonne Krawiec**.

### MOST CONSECUTIVE CHAMPIONSHIPS

Several players have tied for the record of three consecutive championships. Their names and the years in which they had their winning streaks are:

- James Surlow (1976-78)
- John Iwanaga (1978-80)
- Richard Lopez (1979-81)
- Jeff Olson (1981-83)
- Yvonne Krawiec (1983-85)
- Daniel Krawiec (1983-85)



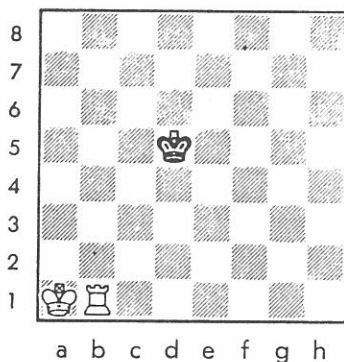
# Endgame Elements

by Monte E. Crane

In our last article we looked at how to checkmate the lone king with king and queen. In this article, we will examine some other examples of mating the lone king.

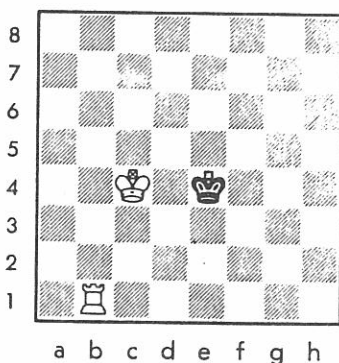
## Mate with King and Rook

In this type of endgame the final mate can only be given on the edge of the board. The trick is to use the king and rook to drive the opponent's king to the edge and then to use the rook to give the checkmate. Look at the following position:



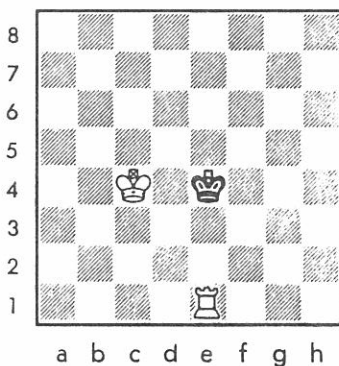
White plays:

1 Kb2 Kd4 2 Kc2 Ke4 3 Kc3 Ke5 4 Kc4 Ke4



White has been using his king to reduce the number of squares available to the black king. Now that the kings stand opposite one another the rook comes into the battle and forces the black king to retreat.

5 Re1+!



It is very important to understand what white is doing. He maneuvers his king until it is facing the opponent's king and then checks with

the rook to force the black king to the edge of the board.

5...Kf5 6 Kd4 Kf4 7 Rf1+

Here it is again!

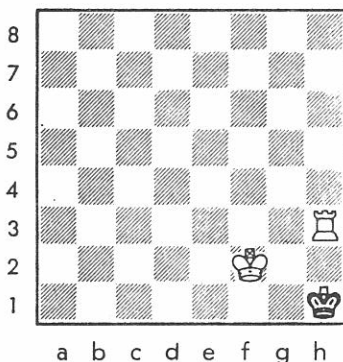
7...Kg5 8 Ke4 Kg6 9 Ke5 Kg5

If black played 9...Kg7, white would play 10 Ke6 Kg8 11 Ke7 Kg7 12 Rg1+ forcing the black king to the edge of the board.

10 Rg1+ Kh4 11 Kf5 Kh3 12 Kf4 Kh2 13 Rg3 Kh1 14 Kf3 Kh2 15 Kf2 Kh1 16 Rh3 mate

There you have it. How to make with the king and queen. This type of mate can usually be accomplished in 16 moves or less.

Final Position:



## LOCAL CHESS CLUBS

### **ANAHEIM CHESS CLUB**

Meets on Wednesdays from 6-10 p.m. at:

Brookhurst Community Center

2271 W. Crescent Avenue

Anaheim, CA

Also meets on Fridays from 6-11 p.m. at:

Ponderosa Park

Southeast corner of Haster and Orangewood

Anaheim, CA

Information: (714) 554-0527 Gerald Blem

### **HART PARK CHESS CLUB**

Meets Saturday and Sunday from 11 a.m. until

early evening at the Hart Park Clubhouse

One block north of the 22 Frwy on Glassell

Orange, CA

### **LABATE'S CHESS CENTER**

Open every day except Monday from noon to  
midnight. Membership or playing fee required.

3024 W. Ball Road

Anaheim, CA

Information: (714) 220-0660 Ed Labate

### **LA HABRA CHESS CLUB**

Meets on Fridays from 7-11 p.m. at:

Senior Citizens Center

Corner of Euclid and La Habra Blvd.

La Habra, CA

Information: (213) 691-2393 Gerald Schain

### **LA PALMA CHESS CLUB**

Meets on Fridays from 6-11 p.m. at:

La Palma Recreation Center (Central Park)

7821 Walker Street (just S of La Palma Avenue)

La Palma, CA

Information: (213) 421-9831 Mike Henebry

## NEWS FLASH!!

The SCCF Southern California Scholastic Olympiad was held on the weekend after Christmas at West Los Angeles College. The event was directed by Andrew Smith.

The winning high school teams were Buena Park HS (First), Harvard HS (Second), and Beverly Hills HS (Third).

The top finishers in the junior high school division were Buena Park JHS (First) and Irvine JHS (Second).

At the top of the elementary division came Compton Avenue School in Los Angeles. Second place was taken by Barker School in Garden Grove. La Veta School of Garden Grove came in third.

## NOTICE

On June 8 and 9 there will be a SCCF Junior Open Tournament at KPFK radio station in Los Angeles. For information call Andrew Smith at (213) 757-8803. This will be a USCF rated event (USCF membership is required). The entry fee is \$7.00.

## SECOND NOTICE

The Placentia Recreation and Human Services Department will be offering beginning chess classes during the summer. There will be two sessions with the first session starting June 25. The fee for this class is \$25 for Placentia residents and \$28 for non-residents. For information contact the Department at (714) 993-8232.



Students interested in joining the United States Chess Federation (USCF) should write to them at:

United States Chess Federation  
186 Route 9W  
New Windsor, NY 12550

---

Remember to renew your subscription to the Orange Knight. Send to:

The Orange Knight  
6560 E. Paseo Caballo  
Anaheim, CA 92807

---

The Orange Knight is published three to four times per year by the Orange County Chess Association.

The Orange County Chess Association Officers are:

Dewain Barber, President  
Calvin Olson, Vice-President  
Susan Barber, Secretary-Treasurer  
Gerald Blem, Executive Tournament Director  
Calvin Olson, Orange Knight Editor

---

THE ORANGE KNIGHT, Volume 10, Number 3:

Contributions by:  
Calvin Olson, Editor  
Monte E. Crane, Writer

Our special thanks to Monte E. Crane who typed this issue of The Orange Knight.

ORANGE COUNTY CHESS ASSOCIATION

6560 E. Paseo Caballo

Anaheim, CA 92807