

ORANGE COUNTY CHESS ASSOCIATION

VOL. 2, No. 4, APRIL, 1976

THE ORANGE  
KNIGHT



"A NON-PROFIT ORGANIZATION"

## ORANGE COUNTY CHESS ASSOCIATION

Presents

3RD ANNUAL SPRING TOURNAMENTSATURDAY, APRIL 10, 1976

Scholastic and Rated Quads Available.

Grades K-12th

2 Locations: Davis Middle School  
 1050 Arlington Dr.  
 Costa Mesa

COME TO

EITHER SITE! Brookhurst Jr. Hi  
 601 N. Brookhurst  
 Anaheim

Registration: 8-9 AM  
 Play from 9-3PM

Bring Sack Lunch And Chess Set!

Orange County Chess Association membership  
 required for all students-\$1.00

Rated Quads-add 50¢ plus United States  
 Chess Federation Membership.

United States Chess Federation Membership-  
 Participation by Juniors members-\$2.00.

Phone 998-5508, for further information.  
 Call after 5 PM.

# 3

## JR. HI. OPEN and TEAM CHAMPIONSHIP

SATURDAY, MAY 8, 1976

Grades 7, 8, and 9.

LOCATION: WARDLOW SCHOOL  
9191 Pioneer Dr.  
Huntington Bch.

REGISTRATION: 8-9 AM

PLAY from: 9-3 PM

Orange County Chess Association Membership  
required-\$1.00.

You may compete individually for a trophy!

You may enter with a team from your school-  
any 5 players, and also compete individually!

Any student may enter this tournament  
as long as he or she is in Grades 7, 8, or  
9.

THIS IS YOUR CHANCE TO BECOME THE JUNIOR  
HIGH CHAMPION OF ORANGE COUNTY!!

Phone 998-5508, for further information.  
Call after 5 PM.

MEMBERSHIP MEETING

All persons are welcome to attend the annual meeting of the Orange County Chess Association. It will be held on April 17, at the Stanton Community Center, 7777 Central Ave., Stanton,

The meeting will involve planning for the coming year and election of the Board of Directors for 1976-1977. The meeting starts at 10:00 AM and will last for about two hours. Please try to attend, all chess enthusiasts are welcome.

NOTICE ABOUT MAILING

The Orange Knight is trying to improve its mailing list so that each member will know when his membership expires and what their membership classification is. On your mailing label the first letter means: Y-for youth, A-for adult, S-for Senior citizen, P-for patron, and N-for non-paying. After the letter you will find the membership number and the date of expiration of your membership. An example would be Y001 Jun 76. Remember to check your mailing label and keep your membership up to date!

MASTER'S SIMULTANEOUS  
PROVIDED TWO DRAWS

by

Allen Worrell

Thirty-eight students from throughout the County had a rare opportunity to play two chess masters on the same day! Robert Snyder, U.S.C.F. Chess Master and Dr. Michael Popovic, Yugoslavian Master, each provided a brief lecture before the Simultaneous. Each Master played 38 games with only two draws gained after four hours. Don Beyer of Westminster and Andrew Wong of Corona each drew with Dr. Popovic. Robert Snyder won all thirty-eight games. Every player felt that this event was a good chance to learn about chess from a Master. Next year this event will be held again, so don't forget to attend!

DAVIS MIDDLE SCHOOL  
LEADS LEAGUE

by  
Dewain Barber

The Junior High League of the Orange County Chess Association has seen amazing growth during this year. The number of teams has tripled over last year and the quality of chess has improved. Davis Middle School of Costa Mesa leads all teams with a 6 wins, no losses record. Each team plays 8 games per year and competes for the League Championship Trophy given to the winning team in May.

Second place in the League is Calder Intermediate School of Buena Park (team name the Colts) with a 6 wins, one loss record.

Third place is a tie between Talbert School of Fountain Valley and Imperial Intermediate School of LaHabra with a record of 5-1.

The Junior High Open and Team Championship Tournament will be May 8 at Wardlow School in Fountain Valley. Any student in grades 7, 8 or 9 may participate for individual trophies or bring a team and play for team honors that day.

League standings are:

Davis 6-0	Starbuck Chm 2-2
Calder Colts 6-1	Oxford 2-3
Talbert 5-1	McComber 2-3
Imperial 5-1	Crescent 2-4
Vista del Rio 4-1	Starbuck <del>Knights</del> 3-3
Calder Knights 4-2	Warner 1-3
Washington 4-2	Currie 1-5
Ball 4-2	St. Joachim 0-3
El Rancho 3 1/2-1 1/2	Brookhurst 0-4
Starbuck Kings 3-2	Kraemer 0-4
McFadden 2 1/2-1 1/2	St. Anne 0-4
St. Cecilia 2-2	

THIS ORANGE COUNTY YOUTH  
IN TOP 25!

by  
Dewain Barber

In my travels around the county, I have had the opportunity to see several young players who are moving up the ladder of success. Steve Tierney is the highest rated player in our county under the age of 10. Also, Steve is the only player other than Doug Root, age 12, from California who has a U.S.C.F. rating over 1300. Steve is in 22nd place of all U.S.C.F. players under the age of 13 in the entire country.

Steve rated 1315, who lives in San Juan Capistrano took a 1st Place trophy at the LA Chess Festival, December, 1974, in grade 3. More recently, he won 1st in a U.S.C.F. rated quad April, 1975. In August of last year, the U.S. Junior Open was held in San Diego. Steve tied for first place in the best under the age of 12.

In the following game Steve makes some very fine moves to win 2nd place in a U.S.C.F. Tournament at the age of 7.

Two Knights Defence

White-Johnson	Black-Tierney
1 P-K4, P-K4	2 N-KB3, N-QB3
3 B-B4, N-B3	4 P-Q3, B-B4
5 N-N5, P-Q4	6 PxP, NxP
7 BxN, QxB	8 N-QB3, QxKNP
9 R-B1, B-KN5	10 P-KB3, B-R4
11 N-Q5, 0-0	12 P-B3, QxRP
13 B-Q2, QR-Q1	14 NxBP, RxQP
15 Q-B2, and at this point Steve spent 10 minutes on his next move. He then played 15...	R-K6ch! This is a forced loss of White's Rook and an excellent combination. Steve was only seven years old at the time. As the game continues White plays 16 K-Q1, Q-K7ch 17 K-B1, QxRch 18 Q-Q1, QxQ 19 KxQ, R-Q6 20 K-K2, KR-Q1 21 B-B1, and Black's next three moves show a mature appreciation of position and an ability to finish off a wounded

opponent quickly, 21...., P-K5! 22 B-B4, PxPch  
23 K-K1, P-B7ch clenches the victory with  
White's resignation on the next move.

Keep up the good work and Orange County could  
have another Chess Master in a few years!

FINAL RESULTS-HIGH SCHOOL LEAGUE

by

Dick Hiatt

Darrell Yap scored 4 1/2 points to lead the  
individual finals of the Orange County High  
School Chess League. Second place went to  
Bob Noel with a 4 point total. Bernie Layton,  
Chris Stevens, and Brent Treadway were also  
able to finish with 4 points but placed by  
tie break points in third through fifth place.  
The five round Swiss tournament involved 33  
students from area high schools.  
The Varsity team competition was won by Marina  
High with 112 total points. Mission Viejo  
won the Junior varsity event with 45.5 points  
Congratulation to all winners.

HENRY BIRD OPEN IS FOR YOU!

by

Cal Olson

April 2, 1976, is an important date to all  
chess players. The Garden Grove Chess Club  
will begin a 5 round Swiss system, USCF rated  
tournament. Registration is at 6:45 PM with  
one round played per week. Entry fee is \$4.00  
and any person interested in starting a career  
in tournament chess is welcome. USCF membership  
is required and can be purchased at the time  
of registration. Mail inquiries to GARDEN GROVE  
CHESS CLUB, P.O. Box 442, Garden Grove, CA  
92640, and then come to Cook Elementary School  
(multi-purpose room), 9802 Woodbury Ave.,  
Garden Grove (between Westminster Blvd. and  
Garden Grove Fwy just west of Brookhurst  
Ave.) on April 2.

DOES YOUR CLUB HAVE A NEWSLETTER?

by

Dewain Barber

On visiting the Cerritos Chess Club, I happened upon a table containing the club's newsletter. I spent sometime looking through the pages and was pleased with what I saw. Jim Smith, the editor, has worked hard to put together a good club magazine. Members of the club may advertise free and games submitted are published.

In the February issue I found an excellent article on Kriegspiel, the art of confusion in chess. Also, the article on Blindfold chess had some interesting moments. Each article was worth reading.

If you would like a copy of the newsletter come to Stowers School, 13350 E. Beach St., Cerritos; Friday nights from 6-10:30 PM.

VALENTINE TORONADO

by

Chet Gall

Rich Cassidy(1453) outclassed eleven other players to win the trophy and prize money in the recently completed Fountain Valley Chess Club Tournament. Rich won with a score of four wins and one loss. The Tournament was for players rated under 1600. If you live in the Fountain Valley area, call Fountain Valley Community Office at 842-6651, ext 217 for information.

CHESS CLASS AVAILABLE

Modern Opening Chess Theory by USCF Master Robert Snyder will start March 31, at Valley Hi School, 1801 S. Greenville, Santa Ana, Rm. C-6. Late Registration will be accepted. For more information call 979-5284.



CHESS PERSONALITY

by

Dewain Barber

In this month's issue of the Orange Knight it was my pleasure to interview Robert Snyder of Garden Grove. Robert is presently one of a few chess personalities in Orange County who holds a Master rating granted by the United States Chess Federation.

I traveled to Robert's home in Garden Grove to do this interview because I wanted to see the collection of chess books and other interesting items he has gathered together since he first began to "push the wood". His book collection includes some vary rare first editions and some equally rare volumes of U.S. chess magazines. In all, it was a fascinating collection numbering 730, and I know I will want to return to take a closer look in the near future.

Dewain Barber-"Did you grow up playing chess in Orange County?"

Robert Snyder-"Yes, at the age of 12, my father taught me the game."

DB-"Compared to other masters, isn't that a little late to start?"

RS-"No, because U.S. Champion Pillsbury did not start till age 16 and he was successful. It is obviously best to learn at an early age."

DB-"Did you ever play on a school team like the kind we have in the Junior High League?"

RS-"I did not ever play on a team, but, my school did declare me champion and in 1971, I played in the LA Tournament of Champions placing second. The following year I placed first."

DB-"When did you begin Tournament chess?"

RS-"In February, 1969, I entered my first important rated tournament. Unfortunately, the results were never turned in and although my tournament rating would have been 1830, it was far above what it should have been. I feel I was a 1400 rated player at the time."

## Chess Personality-(Cont'd)

DB-"What has been your greatest success?"

RS-"The Greater L.A. Open, Region 8 Championship. I tied for first."

DB-"Did you receive your Master rating at this tournament?"

RS-"Yes, I had moved from "A" player to a Master in about one year."

DB-"This next question seems simple but I feel it is very important that younger players have an insight into the amount of study involved in being a Master. What does it really take to become a Chess Master?"

RS-"A combination of dedication and skill is necessary; about 3 1/2 years of tournament play and 1 to 2 hours of studying each day. When I was younger I played postal chess, went over Master games and played intensively, mainly at the Garden Grove Chess Club and at McArthur Park in LA."

DB-"Where does the student begin in order to improve his game?"

RS-"A combination of these: (1) play strong opponents, postal chess or over board, (2) study the ideas behind opening moves, (3) be certain to review your own games, (4) take instruction in chess, and (5) find a stronger player who will work with you on your game."

DB-"What must be done to improve chess in Orange County?"

RS-"We must have TV coverage of events and popularize the game to the extent that there will be daily newspaper coverage as with other sports. Maybe, the biggest problem is getting various institutions and people to see the value of chess."

DB-"Does that mean you feel the government should support chess financially?"

RS-"Yes, then we can compete with other countries on an equal basis."

## Chess Personality-(Cont'd)

DB-"Are you involved in any special projects to improve the quality of chess in the Southland?"

RS-"Presently I teach chess to any person who attends either the Cerritos or Garden Grove Chess Clubs. There are also classes available through the Continuing Education Department of the Rancho Santiago Community College District."

DB-"With the number of books you have, did you ever come across a favorite chess personality?"

RS-"If you refer to personality and not ability, the Hungarian Charousek around 1896 was truly interesting. He had a very short chess career but played so well that most people expected him to be the world challenger to Lasker."

I would like to thank Robert for allowing The Orange Knight to do this interview. I hope he has many future successes!

## U.S.C.F. MOVING

The United States Chess Federation is planning to move its main National office to 186 Rt. 9W, New Windsor, NY 12550. Since there may be some confusion U.S.C.F. has asked the cooperation of its members, directors, and organizers in holding all non-routine correspondence and especially telephone calls from about March 22 to April 9, while they are moving. Of course, U.S.C.F. memberships, rating reports, postal reports, orders and similar business should continue to be submitted at the normal time.

## LEGAL'S MATE

by

Cal Olson

The student of chess must be familiar with many various mating patterns if he wishes to excel at the game. Sometimes it happens that a typical mate can be brought about by a sacrifice of material. Usually this happens as a result of the opponent neglecting his development or making moves which weaken the defenses of his king (or both).

One of these typical mate patterns is known as Legal's Mate (or Legal's Pseudo-Sacrifice). Its not a real sacrifice because if accepted the mate is forced. A classic example is the following game: DeLegal vs Saint Brie (Paris, 1750)-

1 P-K4 P-K4

Occupying the center with control of their Q5 and KB5 squares.

2 N-KB3

Attacking Black's center pawn.

P-Q3

Protecting the pawn.

3 B-B4

Further control of the Q5 square and attacking Black's pawn at KB7 with the threat of 4(N-N5).

B-N5

This move pins the knight preventing the threat 4(N-N5).

4 N-B3

Developing a piece with even more control of the center squares.

P-KN3?

This move neglects development of the pieces, does not help to strengthen the control of the center, does not contribute to the safety of the king, and does not provide support to the Bishop at N5.

## LEGAL'S MATE (Cont'd)

5 NxP!

The sacrifice. Based on the fact that the Bishop is not protected and the Black King is vulnerable.

BxQ??

Black could have saved the King with 5(..., PxN. Now mate is forced.

6 BxP ch K-K2

7 N-Q5 mate.

There are many variations on this theme. Another well known game played 150 years later:

Pillsbury	Fernandez	(Havana, 1900)
-----------	-----------	----------------

1 P-K4

P-K4

2 N-QB3

N-QB3

3 P-B4

P-Q3

4 N-B3

P-QR3? This move does not contribute to development or center control.

5 B-B4

B-N5

6 PxP

NxP

7 NxN!

BxQ??

8 BxP ch

K-K2

9 N-Q5 mate.

Again Black wasted time with pawn moves and pinned with the unsupported Bishop. The game was one of twelve that Pillsbury was playing simultaneously--Blindfold!!

A few more examples will illustrate the variety of positions in which the mate can become a threat.

Alapin's Opening-1  
N-KB3 3 P-Q3, B-B4  
PxP mate.

P-K4 2 N-K2,  
BxP 5 BxQ??,

LEGAL'S MATE (Cont'd)

Petroff's Defense-1 P-K4, P-K4 2 N-KB3, N-KB3 3 NxP, N-B3 4 NxN, QPxN 5 P-Q3, KB-B4 6 B-N5?, NxP! 7 BxQ??, BxP ch 8 K-K2, B-N5 mate.

Finally, an opening trap in which the characteristic sacrifice is used to win a piece:

Queen's Gambit Declined-1 P-Q4, P-Q4 2 P-QB4, P-K3 3 N-QB3, N-KB3 4 B-N5, QN-Q2 5 PxP, PxP 6 NxP??, NxN!! 7 BxQ, B-N5 ch 8 Q-Q2, BxQ ch 9 KxB, KxB with a piece ahead.

CHESS NEWSLETTE: A SOUTHERN CALIFORNIA MAGAZINE  
by  
Dewain Barber

It is my pleasure to mention a publication I have received which helps inform Orange County chess players of where they can play tournament chess. The Southern California Chess Newsette is published in La Puente by a very energetic and hard working man named David Argall. He has spent his time traveling around the Southland recording and publishing chess events.

Dave is important to organizers of events because he helps keep some sense of order out of the many events, preventing conflicts by compiling information on up coming events and making it available to those in need. The Newsette is published 8 times a year at \$3 per year for a subscription. If you wish to purchase individual issues it cost 50¢ per copy. Subscriptions can be mailed to 1300 Ballista, LaPuente, CA 91744. A subscription is well worth it because of the numerous events that are listed.

Next time you see a man at a tournament with a beard and a note pad, it's most likely David recording tournament results for the Southern California Chess Newsette. Say hello and meet a hard working supporter of Southland chess activities!

NEW MOVES  
by  
Michael Popovic

Recently, I played one interesting chess game with Mr. Enrico Lima, a sharp chess player from Brazil. I noticed from the early beginning that my opponent knows theory and my plan was to find a "new" theoretical move as soon as possible.

White-Popovic      Black-Lima  
 Sicilian Defense, Orange County, January 1976-1 P-K4, P-QB4 2 N-KB3, N-QB3 3 P-Q4, PxP 4 NxP, N-KB3 5 N-QB3, P-KN3. So, Dragon Variation, which I use to play a lot as Black. He is rather difficult to play against your favorite system, at least because, you want to keep up its good reputation, but sometimes you don't have choice... 6 B-K3, B-N2 7 B-QB4, 0-0 8 B-N3, if(8 P-KB3 than 8..., Q-N3; if 8 Q-Q2 Black plays N-KN5).  
 The game continues with 8..., P-QB3 9 P-KB3, B-Q2 10 Q-Q2, R-B1 11 P-KR4, N-K4 12 P-KR5, NxRP 13 0-0, N-QB5 14 BxN, RxB 15 P-KN4, N-B3. Up to now my opponent was playing very fast being that he is familiar with all variations and I am sure he was expecting the next move(16 B-R6) played in the well known game between Geler-Korcnoj in 1971. After (16 B-R6 Black plays NxKP and after 17 Q-K3 or Q-R2.) There are deep analysis for both sides which actually have even chances to both sides. So, I wanted to play something new. I had a feeling that this position hides a "new" move for White. I was considering all different possibilities and finally decided on 16 N-B5!?, PxN 17 NPxP, Q-R4?! Maybe there is something better than this, because

## NEW MOVES (Cont'd)

Black's plan of doubling Rooks on the Bishop's file and then sacrifice exchange on the Knight is too slow. Next is 18 QR-N1, KR-B1 19 B-R6, N-K1 20 BxB, NxB 21 P-B6!! excellent after PxP, Black will not be able with (21..., Q-K4) to cover the important N7 square. The game continues with 21..., PxP 22 Q-R6, K-B1 the only move. (23 QxN ch, K-K1. (23..., K-K2) is no good because of (24 N-Q5 ch) will lead to mate. Next is 24 QxP(6), and again threat of mate in one move. Black plays 24..., B-K3 25 RxP, RxN. Finally Black realized it long awaited goal, but too late. White has elegant mate with 26 QxB ch, Black resigns on 26..., PxQ 27 R-N8 mate Or(26..., K-Q1 27 QxP ch!, K-K1 28 R-N8 mate). In analysis Black suggested instead of 25..., RxN? a new move(25..., Q-K4), but White wins with (26 R-N8 ch, K-Q2 27 RxP ch! etc. This was a very dynamic and good game for analysis.

~~XXXXXXXXXXXXXXXXXXXXXXXXXXXX~~

What is a PFUSCHER?

~~XXXXXXXXXXXXXXXXXXXXXXXXXXXX~~

WHAT IS THE "CCLA"?

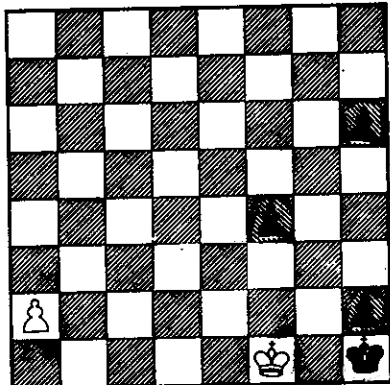
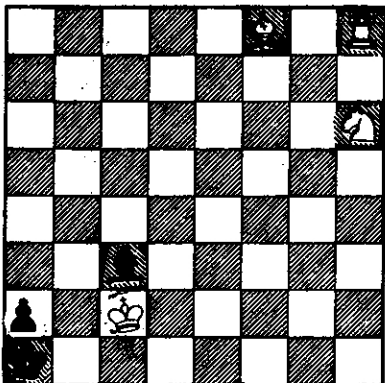
The Correspondence Chess League of America is the oldest organization in North America dedicated entirely to the promotion of correspondence (by mail) chess. CCLA is a non-profit organization which provides for the widest variety of tournaments possible to the postal player. If you are interested in postal chess send inquiries to CCLA, P.O. Box 4844, Fullerton, CA 92631.



17

"TOUGHIES"  
by  
David Zechiel

#11-White mate in 3



#12-White mate in 6

---

# "GAMBIT"

CALIFORNIA CHESS REVIEW

1134 "B" Lombard

Anaheim, CA 92801

SUBSCRIPTION IS \$5.00 PER YEAR

THE CHESS PLAYER'S 23rd PSALM\*

by

Robert S. Drum

The King is my shepard; I shall not resign;  
 he maketh me to play well through difficult  
 openings.

He leadeth me safely through tight middle-  
 games; he restoreth my rating points.  
 He leadeth me in the paths of checkmate  
 for my game's sake.

Yea, though I blunder through the endgame  
 in the shadow of a mate in two,  
 I will fear no passed pawns;  
 for his kibitzing is with me;  
 His pin and discovered check,  
 they comfort me.

He prepareth a strategy for me  
 in the presence of my opponent;  
 he anointeth my head with confidence:  
 my Kingside will not be runneth over!  
 Surely wins and trophies shall follow me  
 all the rounds of my life;  
 and I shall not lose a won game  
 forever!!

\*As printed in Chess Life and Review,  
 February, 1975.

+++++

SOLUTIONS

PROBLEM #11-Cheron, 1 N-B5, BxR 2 N-N7,  
 BxN 3 BxB mate.

PROBLEM #12-J. Holumbirek, 1 P-R3 will result  
 in mate after Black advances his pawns,  
 and White promotes RP for either a Queen  
 or Bishop!

# MERCURY

## Savings & Loan Association

OR. COUNTY BRANCHES-

8955 Valley View, Buena Park

1001 E. Imperial, La Habra

1095 Irvine, Tustin

"Good Luck at the SPRING TOURNAMENT"

---

THE ORANGE KNIGHT  
6560 E. Paseo Caballo  
Anaheim, CA 92807  
998-5508

EDITOR-Dewain Barber  
ASSISTANT EDITOR-Alan Worrell  
STAFF WRITERS-Dick Hiatt  
Robert Snyder  
David Zechiel  
Cal Olsen  
Chet Gall  
Mike Henebry

The Orange Knight is published 5 times a year during January, March, May, August and October.

ORANGE COUNTY CHESS ASSOCIATION  
6560 E. Paseo Caballero  
Anaheim, CA. 92807