

# THE ORANGE KNIGHT

60¢

VOL.9  
NO.3

1984



orange co. chess association:  
a non-profit organization

## † CALENDAR OF EVENTS 1983-84 †

NOV.19-SAT: MILEY STASER SCHOLASTIC  
 Grades 1-10 Registration 9:00-10:00 AM. Play from 10-3 PM.  
 OCCA membership is required.  
 Teams will finish earlier.

JAN.28-SAT: KASHDAN WINTER SCHOLASTIC  
 Grades 1-9. Registration 9:00-10:00 AM. Play from 10-3 PM.  
 OCCA membership is required.  
 This tournament consists of 4AM and an  
 INDIVIDUAL tournament. Teams will  
 consist of four or more players.

FEB.11-SAT: BERNARD MORRISON SPRING SCHOLASTIC  
 Grades 1-9. Registration 9:00-10:00 AM. Play from 10-3 PM.  
 1st and 2nd place winners will  
 qualify to play in the Orange  
 County Scholastic Championship.

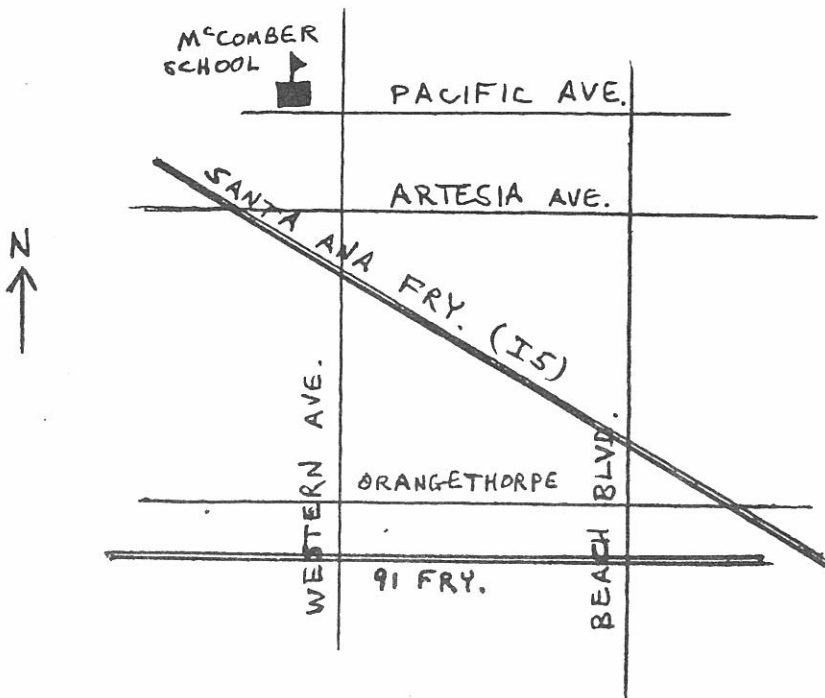
FEB.25-SAT: PETERSON INVITATIONAL (ORANGE COUNTY SCHOLASTIC CHAMPIONSHIP)  
 Grades 1-9. By invitation only!  
 Those eligible to play are the  
 1st and 2nd place winners of  
 the Morrison tournament and the  
 champions from the previous year.

NOTE: OCCA membership is \$3.00/year.  
 For further information call  
 Dewain Barber at (714) 998-5508.

!!! THERE WILL BE A \$1.00 CHARGE FOR REPLACEMENT OF LOST MEMBERSHIP CARDS IN OCCA OR FOR STUDENTS WHO DO NOT BRING THEIR OCCA MEMBERSHIP CARDS TO AN EVENT.

Tournaments will be held at:

McComber Intermediate School  
7461 Pacific Ave.  
Buena Park, Ca. 90621



BRING SETS AND BOARDS!

For those needing sets, boards, or clocks they will be for sale through:

AMERICAN CHESS EQUIPMENT CO.

Dewain Barber

(714) 998-5508

♁ PLAYERS SCHOLASTIC OPEN ♁

The PLAYERS chess shop in Los Angeles will be hosting a scholastic tournament on March 3rd and 4th. It will be for grades K-12.

This will be a 4 round, swiss-system, USCF rated event. The entry fee is \$12.00 (if it is mailed before Feb. 25th) or \$15.00 at the tournament site. Registration at the tournament will be from 9-10 AM on March 3rd.

Rounds will start at 10 AM and 3 PM each day. The time limit is 40 moves in 2 hours and 20 moves per hour thereafter.

The tournament will be at:  
 Players Showroom  
 1710 Silverlake Blvd.  
 Los Angeles, Ca. 90026

For information contact Rainer Rickford (213) 665-5728.

NOTE: USCF (United States Chess Federation) membership is required. The fee is \$10.00 for regular Jr. membership, or \$3.00 for participating Jr. Both are 1 yr. but participating Jr. membership does not receive Chess Life magazine.

Prizes will be in gift certificates to be used at Players Showroom toward the purchase of chess books or equipment.

Prize fund is: \$60.00 1st, \$30.00 2nd,  
 \$20.00 3rd  
 \$20.00 1st (9th grade & under)  
 \$20.00 1st (6th grade & under)

# ♔ FREE CHESS CLASSES ♔<sup>5</sup> FOR JUNIORS

Instructor - National Chess Master,  
ROBERT M. SNYDER

Mr. Snyder has represented the United States in the Correspondence Chess Olympics, is Co-Champion of the Western United States, an author and writer for Chess Life Magazine and is host of the TV show, "Chess With Robert Snyder". He has long supported scholastic chess and is responsible for coaching and training many of the top ranked junior players in Southern California.

When - CLASS A - Saturday, 25 Feb. 1984  
7 to 9 p.m.

CLASS B - Sunday 26 Feb. 1984  
3 to 5 p.m.

Select one of the two classes and call to sign up in advance. There is a limit on class size.

Where - 14282 Jessica St., Garden Grove, CA  
Phone - (714) 531-5238

Who - The Class is open to students in grades 5, 6, 7 & 8 who attend a school in Orange County. Students must already know how the chess pieces move.

The class will cover advanced rules, basic traps, openings and endgames. There will be a brief practice period.

The class is FREE! The class is made possible through donations from National Chess Master Robert Snyder and Kodiak Glass Company.

FURTHER DETAILS AND RESERVATIONS - CALL -

Robert M. Snyder (714) 531-5238

\*\*\*\*\*

## † THE PLAYER'S SCHOLASTIC OPEN †

BY

Robert M. Snyder - National Master

The Player's Showroom in Los Angeles conducted their first scholastic event of the year on January 21 and 22. Prizes in the form of gift certificates were used for the winners.

Fourteen-year-old ROGER POEHLMANN of Torrance swept the field to take first place with a perfect 4-0 score. Roger, who is rated as an expert, was the highest rated player in the event. He received a gift certificate for \$60.00.

There was a tie for second place between 12-year-olds MIKE BROADY and DEAN ROBERTS, both of Garden Grove. With scores of 3-1 they each received a gift certificate for \$25.00.

BRIAN ROSENTRATER of Garden Grove and SEAN NOMURA of Santa Ana tied for top player 9th grade and below. They each received a \$10.00 gift certificate.

RUSS GLIOTTONE of Santa Ana received a \$20.00 gift certificate for top player 6th grade and below.

The Player's Showroom has their next scholastic event scheduled for March 3-4. Call (213) 665-5728 for details.

### ♁ SHORT GAME ♁

1.e4, e5; 2.Nf3, Nc6; 3.Bc4, d6; 4.Nc3, Bg4;  
5.O-O, Nd4; 6.Nxe5, Bxd1; 7.Bxf7ch, Ke7;  
8.Nd5mate. This is a variation of Legal's  
mate.

## † KASHDAN WINTER SCHOLASTIC †

The Kashdan Winter Scholastic, held on Jan. 28th, drew 86 players. This was for the Elementary and Junior High team championships. There were individual winners also for each grade and grade division.

There was a tie for first place in the Elementary School team championship. CALVARY CHAPEL CHRISTIAN SCHOOL (Yvonne & Daniel Kraweic) was tied with MARCUS GARVEY SCHOOL (Malik Shabazz, Shoshana Shabazz, Dakarai Smith, and Jovan Colbert). Both had a total of 182 points.

In the Junior High team championship McCOMBER INTERMEDIATE SCHOOL (Show Kitagami, Steve Hodges, Shawn Camacho, and Shawn Nelson) took First Place with 360 points. Following closely in Second Place with 358 points was BALBOA JUNIOR HIGH (Dan Gentry, Roger Brown, Clifford Feldheim, and Eric Hartman). In Third Place with 265 points was McARTHUR JUNIOR HIGH (An Tuan Le, Pat Carder, Alan Cheney, and Kirk Hoppe).

For the individual prizes the 1st place winner in Kindergarten was WEBSTER EVANS. There were no entries in the First grade division. In Second grade YVONNE KRAWEIC took 1st place with JOVAN COLBERT in 2nd place and ROB MATNEY in 3rd place. Third grade had KAMIESHA TURNER in 1st place with DAKARAI SMITH in 2nd and SHOSHANA SHABAZZ in 3rd. DANIEL KRAWEIC dominated the field to take 1st place in Fourth grade with an 11-0 score. In 2nd place was MIKE OSMAN. 1st place winner in Fifth grade was MALIK SHABAZZ with RUSS GLIOTTONE in 2nd place.

Sixth grade was separated into two divisions. In Division I RICHARD LOPEZ made a clean sweep of 11-0 taking 1st place.

In 2nd place was ANH TUAN LE and ERIC ANDERSON was 3rd. In Division II it was a close contest with DAN GENTRY in 1st place with  $10\frac{1}{2}-\frac{1}{2}$  only  $\frac{1}{2}$  point ahead of ROGER BROWN who placed second. 3rd place was taken by EMBER GROSS.

Seventh and Eighth grades were also each separated into two divisions. In the Seventh grade the 1st place winners in each division had a perfect score. Division I had DEAN ROBERTS of Garden Grove in 1st with a score of 9-0 followed by CLIFFORD FELDHEIM in 2nd and SEAN PADEN in 3rd place. In Division II it was JEFF WAGONER of Santa Ana with 8-0 in 1st ahead of SHAWN CAMACHO in 2nd and KIRK HOPPE 3rd. Eighthgrade Division I had SHOW KITAGAMI making a clean sweep to score 9-0 for 1st place. In 2nd place was BRIAN LAU and in 3rd place was DAVID JOHNSTON. Eighth grade Division II showed STEVE HODGES in 1st place with ERIC HARTMAN in 2nd and SHAWN NELSON in 3rd.

Ninth grade had another perfect score with TONY CHA scoring 6-0 for 1st place ahead of HOON KIM in 2nd and STEVE MAGDELANO in 3rd.

The event was directed by DEWAIN BARBER.

(Cont. from p.9)

18. exd4,Rxd4;19. Qxd4,Qf2;

This is the pin which forces the White Queen to capture the Bishop. The Black Queen then drives the White King into a mate.

20. Qxe5,

Forced. Now Black mates in four.

20...Qxc2ch;21. Kd4,Qd3ch;22. Kc5,b6ch;

23. Kc6,Bd7mate. Also 23...Qd7 is mate.



## ♔ AN OLD GAMBIT GAME ♔

Notes by Calvin Olson

The game I have selected was played in Vienna in 1910. It was between SCHENKEIN (White) and SPIELMANN (Black). Rudolf Spielmann was known as a great master of attack.

1. f4,e5;

This is known as From's Gambit. White could now play a gambit as well by playing 2.e4 transposing into the King's Gambit.

2. fxe5,d6;3. exd6,Bxd6;4. Nf3,

Black was threatening 4...Qh4ch to be followed by mate. If White had played 4. g3 Black could have continued the attack with h5.

4...g5;

An aggressive continuation favored by attacking players. Black's threat is 5...g4 followed by Qh4ch.

5. g3,

Not 5. h3?,Bg3mate.

5...g4;6. Nh4,Ne7;7. d4,Ng6;

Black threatens 8...Nxf4;9. gxf4,Qxf4ch. White does not want to play 8. Nxf6, hxf6 because Black will then threaten 9...Bxf3ch.

8. Ng2, Nc6;9. e3,h5;10. Bd3,h4!;

Black offers the sacrifice of a pawn.

11. Bxf6,fxg6;12. Nxf4,Rxf4!;

White is undeveloped and Black with this further sacrifice removes White's only developed piece. Black also furthers his own development with attacks that hinder White's development.

13. g3xf4,Qxf4ch;14. Kd2,Bf5;15. a3,

This was played to prevent 15...Nb4.

15...0-0-0;16. Kc3,Be5;17. b4,Nxf4;

Black now uses his development in a combination where a pin is used to force mate. (See page 8)

# ♔ POTPOURRI ♔

by  
M. E. Crane

(Third in a series of article on chess notation)

## PART 3 - Forsythe Notation

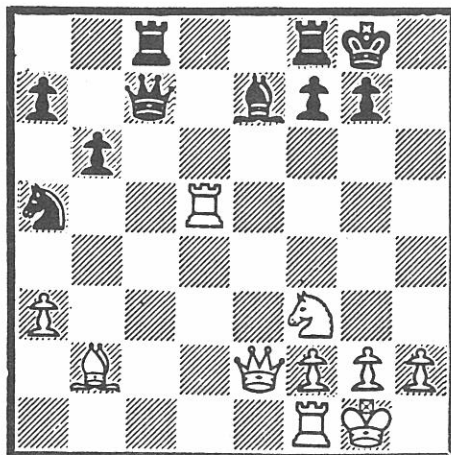
In the first two parts we have examined the two most popular systems for recording the moves of a chess game. There are other, specialized systems used to send moves by mail and telegraph. If you are interested in these systems you can learn about them by consulting books on the rules of chess. These books should be available in your local library.

Now we will examine a special type of notation, called Forsythe notation, which is used to record adjourned positions, problems, or any position.

Like both the descriptive system and the algebraic system Forsythe notation uses letters to represent the pieces. Capital letters are used to indicate White pieces and lower case letters are used for the Black pieces. The letters used and the pieces they represent are:

P (p) for the PAWN  
R (r) for the ROOK  
N (n) for the KNIGHT  
B (b) for the BISHOP  
K (k) for the KING  
Q (q) for the QUEEN

The best way to learn how Forsythe notation works is to look at an example. Look at the following diagram:



Suppose you were trying to describe this position to someone. You might say, "Black has a Rook on c8, another Rook on f8, his King on g8 ..." and so on. But, this takes a lot of time to describe the entire position and it isn't very efficient.

Now, look at just the eighth rank, closest to the top of the diagram. Reading from left to right, there are two empty squares, a Black Rook, two empty squares, another Black Rook, Black King, and another empty square. If we use numbers to represent the number of empty squares and the above symbols for the pieces we could write this as: 2r2rk1. This is exactly how Forsythe notation would be used. The entire diagram would be written:

```
2r2rk1
plq1bpp1
1p6
n2R4
8
P4N2
1B2QPPP
5RK1
```

This concludes our look at chess notation. You can now use this information to explore the wealth of beautiful chess that can be found in the many books on the game.

# ♔ WINNING CHESS TACTICS ♔

By ROBERT M. SNYDER  
NATIONAL CHESS MASTER

One of the most common weaknesses found in the opening is the e1-h4 or h5-e8 diagonal leading to the King. Below are six problems which illustrate winning themes against these weakened diagonals.

The solutions to the first problems are more easy to solve than the last few problems. The solutions follow the diagrams.

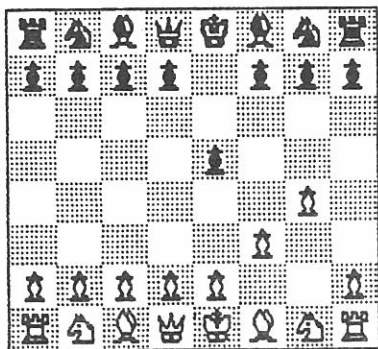


DIAGRAM 1  
BLACK TO MOVE AND MATE IN 1 MOVE

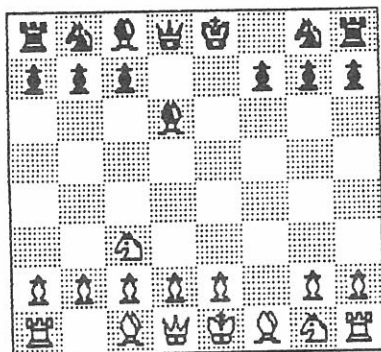


DIAGRAM 2  
BLACK TO MOVE AND MATE IN 3 MOVES

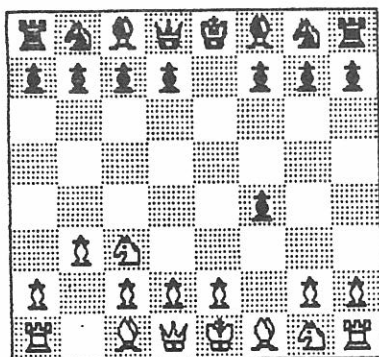


DIAGRAM 3  
BLACK TO MOVE AND WIN

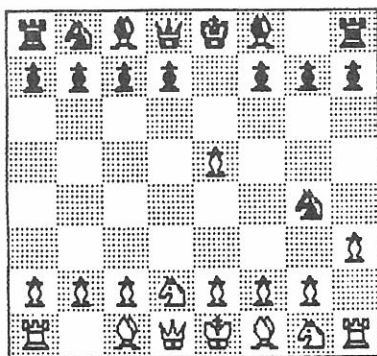


DIAGRAM 4  
BLACK TO MOVE AND WIN

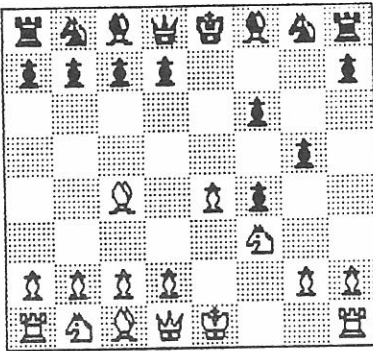


DIAGRAM 5  
WHITE TO MOVE AND WIN

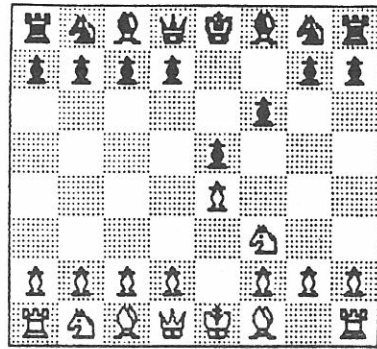


DIAGRAM 6  
WHITE TO MOVE AND WIN

### SOLUTIONS

- DIAGRAM #1 - Black forces checkmate in one move with 1...Qh4 mate! This is called the "Fools Mate".
- DIAGRAM #2 - Black forces checkmate in three moves with 1...Qh4+ 2 g3 Bxg3+ 3 hxg3 Qxg3 mate!
- DIAGRAM #3 - Black wins material after 1...Qh4+ 2 g3 fxg3 and now if 3 Nf3 then g2+! 4 Nxb4 gxh1=Q.
- DIAGRAM #4 - Black wins at least a Queen after 1... Ne3! and now if 2 fxe3 then Qh4+ 3 g3 Qxg3 mate!
- DIAGRAM #5 - White wins after 1 Nxg5 (opening up the diagonal for White's Queen) fxg5 2 Qh5+ Ke7 3 Qf7+ Kd6 4 Qd5+ Ke7 5 Qe5 mate!
- DIAGRAM #6 - White sacrifices his Knight for a winning attack with 1 Nxe5! fxe5 (It would have been better to decline the sacrifice with 1...Qe7) 2 Qh4+ Ke7 (If 2...g6 then White wins Black's Rook with 3 Qxe5+) 3 Qxe5+ Kf7 4 Bc4+ d5 (Black covers the f5 square with his Bishop; for if 4...Kg6 then 5 Qf5+ Kg6 6 d4+ g5 7 h4 and Black's King is exposed to a mating attack) 5 Bxd5+ Kg6 6 h4! (with the threat of 7 h5+) h5 7 Bxb7! attacking Black's Rook and planning to meet 7...Bxb7 with 8 Qf5+ Kh6 9 d4+ g5 10 Bxg5+ winning Black's Queen.

# 👑 JUNIOR GROUP CLASSES 👑

By - ROBERT M. SNYDER, National Chess Master,  
Professional Chess Instructor, TV host, Author  
and writer for CHESS LIFE MAGAZINE.

When - Class 1 - TUESDAYS - 7 to 9 p.m.  
Class 2 - WEDNESDAYS - 7 to 9 p.m.

Where - 14282 Jessica St., Garden Grove, CA  
Phone (714) 531-5238/message 531-3643

Who - All beginning and advanced beginning  
Juniors ages 10 to 15.

Fee - Advanced payment for four sessions - \$24.00.  
Payment at each session - \$7.50.

How does the class work?

For the first hour of class students receive instruction in all parts of the game; Openings, Endgames, Middlegame tactics and strategy, Analysis of problems and positions, etc...

For the second hour of class students compete among themselves under supervision by Mr. Snyder. Students learn to compete under tournament conditions. Students receive a free score book at their first session.

GROUP ACTIVITIES - At no additional charge students are taken on weekly field trips to local clubs, chess shops and tournaments for practice.

VIDEO INSTRUCTION/PRACTICE ON COMPUTERS

At no additional charge students may schedule times to receive video instruction or play on one of a half dozen chess computers.

BOOKS FOR LOAN/STUDENT DISCOUNTS

A library of books is maintained for free use by students. Students receive a 25-30% discount on books and equipment!

*Students receive the best instruction available on the West Coast. No one can compete with these benefits!!!*

*ADVANCED STUDENTS - Contact Mr. Snyder for information on private or semi-private instruction.*

*(714) 531-5238\*\*\*\*\* (714) 531-3643*

\*\*\*\*\*

THE ORANGE KNIGHT

6560 E. Paseo Caballo

Anaheim, Ca. 92807



EDITOR

Calvin Olson

CONTRIBUTORS

Monte Crane

Robert M. Snyder



THE ORANGE KNIGHT is published  
3 to 4 times yearly by the  
Orange County Chess Association.

ORANGE COUNTY CHESS ASSOCIATION

6560 E. Paseo Caballo

Anahelm, CA 92807