
Wilshire Chess Society Newsletter

OFFICERS

President & Editor-Michael Jeffreys
(310) 473-6291

MJeffrey@ix.netcom.com

Club Secretary-Lisa Edmondson (310) 836-5949

Assistant T.D.- Elliot Landaw (310) 552-4538

Vol. 8-1: January 2002



Hyne and Pennucci tie for first in 2002 WCS Blitz Championship!

At our second annual WCS Blitz Championship, Carl Hyne and Bill Pennucci tied for First Place with 10 pts. out of 14. On the right is the photo of them playing for the trophy. (Actually, we didn't have a trophy, but the crowd just wanted to see the two co-winners have a play-off. Hyne won a tense game with a backrank mate!)



Hyne vs. Pennucci during playoff as Julian Landaw (with hands in pockets) and Max Lemkin (on right) look on.



Co-
Champions

Carl Hyne



Bill Pennucci



Rami Furman
(left) and Sean
M c M i l l a n
(right) tied for
second place.



David Bassett vs. Yuliy Sheynberg

**Thanks to everyone who participated.
See you January 27! - Michael**



Elliot Landaw helped direct the tournament while his kids (Max & Julian) played.



Yuliy Sheynberg, who is rated 2354, was a special surprise guest. While the tournament's top seed was only able to tie for third, his life time record against Korchnoi is 6 draws!

Next W.C.S. G/45 Tournament January 27, 2002 - Sunday

Westside Pavilion, Community Room "C"
10850 W. Pico Blvd., West Los Angeles
(3rd Flr., West of Barnes & Noble, next to
the SPCA pet adoption center)
Registration 10:30 am
Games from 11:00 - 4:30pm (approximately)
3-rounds, round robin quads by rating
Time control: G/45 mins. Entry fee: \$15.00
Prizes: \$35.00 per quad (25.00 1st, 10.00 2nd)
(WCS Membership required, \$12.00/year as
well as U.S.C.F. Membership
(Avail. at site for \$40.00 per year).

Wilshire Chess Society Blitz Championship Photos (Con't)



Richard Henderson



Yves Gaume



Alfredo Con



Bobby Hall



Carl Hyne vs. Julian Landaw



Max Landaw



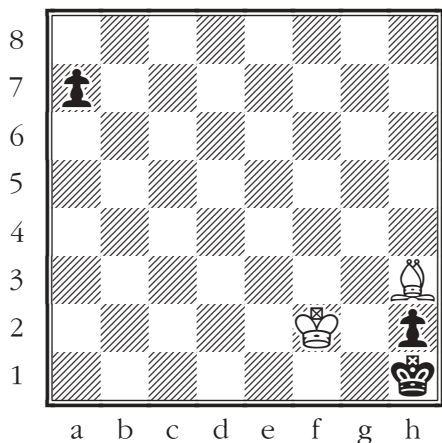
Alfredo Con vs. Emerson Lamery

After the tournament, Bobby Hall set up the position below and asked Carl Hyne and myself if, with Black to move, he could just let his time run out and claim a draw (The reason Black would want to do this is because his only legal move is the a pawn to either a6 or a5, which would then allow White to play Bg2#). Since everyone knows that a King and a Bishop don't constitute mating material, does Black have a case? In other words, you are the T.D., and you get called over to this board. Black's flag is down and he is claiming a draw saying that White does not have mating material. White however, is arguing that he does have mating material in that he can give mate next move and should be awarded the win! How do you rule?



Jonathon Hanish

(FYI: The 3 of us argued this one over for 25 minutes!) You can either look it up in the USCF rulebook (yes, it's in there), or wait until next month when I'll give the correct answer.



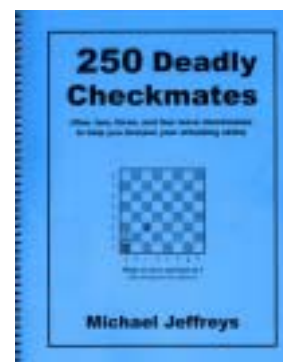
**BLACK to Move & let his Flag Fall
(Draw or White Win? You Make the Call!)**

**Win More Games in 2002...
by Sharpening Your Attacking Skills!**

**250 Deadly Checkmates (1,2,3 & 4 move checkmates
to help you sharpen your attacking skills)**

by Michael Jeffreys

- 158 large 8 1/2 x 11 size pages
 - Spiral bound - pages lay flat
 - Two oversized diagrams per page for easy reading
 - Includes *The 10 tips for Solving checkmate puzzles*
- Order Your Copy Today! Only
\$15.00 plus \$3.95 shipping



Send Check to:
Powerful Magic Publishing, 1516 Purdue Ave. #7, L.A.,
CA 90025 (All orders shipped within 48 hours)