

---

53 Chess Clubs  
And Organizations

CIRCULATION  
348 Chess Players

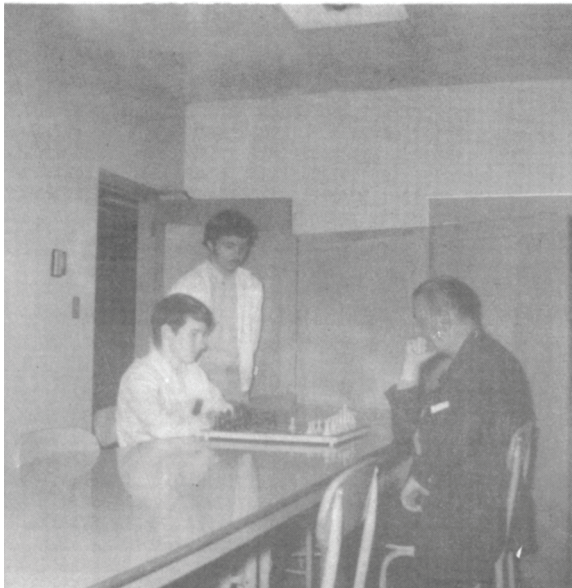
44 Chess Publications  
And Libraries

---

# S C A C H I C V O I C E

Central California's Chess Magazine  
And  
Official Organ Of The  
Central California Chess Association  
(An Affiliate of the United States Chess Federation)

Robert R. Trenberth (r.), of Oakland, winner of the Oakland Chess Club's recently concluded club tournament, ponders his opening against Kim Stocksdale, winner of the tournament's First B prize,



as Jerry Gerhardt, First C, looks on. Twenty-one players participated in the Swiss System tournament, held August through October. (Full details on page five infra.)

December 1968-January 1969  
Volume I  
Numbers vii-viii

MARTIN E. MORRISON . . .

Editors

. . . . ELWIN C. MEYERS

## \*\*\*TOURNAMENT CALENDAR\*\*\*

30 November- 1 December	1968 Northern California Championship	USCF and CSCF	San Francisco
14-15 DECEMBER	3RD ANNUAL SAN FRANCISCO BAY AREA AMATEUR OPEN CHESS CHAMPIONSHIP	USCF	OAKLAND
4- 5 JANUARY	NEW YEAR OPEN	USCF- CCCA	WALNUT CREEK
15-16 FEBRUARY	CONCORD OPEN	USCF- CCCA	CONCORD
? March	Annual IBM Championship	?	Los Gatos
28-30 MARCH	5TH VISALIA AMATEUR OPEN	USCF	VISALIA
19-20 April	4th Annual Peninsula Open	?	Sunnyvale
24-25 MAY	WALNUT CREEK OPEN	USCF- CCCA	WALNUT CREEK
31 August- 1 September	Sonoma State College Open	?	Rohnert Park
27-28 September	4th Annual Northern California Class Championships	?	Sunnyvale

\*

√Tournament Organizers: Please let us know as soon as possible of tentative or definite tournament dates, so that we may be able to reserve the dates for you in the "Tournament Calendar." Details for tournament will be found in the "News" section. CCCA AFFILIATES' USCF TOURNAMENT ARE CAPITALIZED IN THE TOURNAMENT CALENDAR.—EDS.√

----- (advertisement) -----

Chess Organizations

Chess Clubs

Chess Tournaments

Chess Meeting Places

Chess Laws

Chess Clacks

Chess Columns

A wealth of local data is published conveniently in The Blue Booklet and Encyclopaedia of Chess for Central California, by Martin E. Morrison and Elwin C. Meyers, Editors, CCCA, with the cooperation of William G. Addison, President, Mechanics' Institute Chess Club. The booklet gives full details on all subjects listed supra. Only 25¢. Send your order with 25¢ per copy to Editors, CCCA; c/o Post Office Box 4822; Oakland, California 94604.

-----  
\*\*\*NEWS\*\*\*CCCA League Booming

Competition in the CCCA League, just begun, is already fierce. The League consists of no less than fifteen teams, covering the entire East Bay from Martinez to Newark, and has had to be divided into an Eastern Division of eight teams and a Western Division of seven teams. The League Director is now Jack W. Dennis, of Richmond, who was elected at a CCCA meeting just before the League was to begin, since the former League Director, William L. Clipson, had to move suddenly to New York. Much work remained for Mr. Dennis to complete, and, to his credit, he had the entire league operation set up and running smoothly in less than a week!

The Eastern Division is made up of the following teams: Concord A (Leroy Turner, Captain), Concord B (Paul Westerline, Captain), Livermore Alphas (Harold Barnett, Captain), Livermore Omegas (Glenn Hage, Captain), Martinez A (Rudy R. Quintero, Captain), Martinez B (Donald Peterson, Captain), Orinda (Duncan D. Campbell, Captain), and Walnut Creek (Saleh Majahed, Captain).

The teams of the Western Division are: Alameda (Gay Orr, Captain), Hayward (Carl R. Ehmann, Captain), Newark (Hans Poschman, Captain), Oakland Oaks (James S. Dorfman, Captain), Oakland Stingers (Theodore E. Anderson and Richard Lee, Co-captains), Richmond (Peter M. Brown, Jr., Captain), and San Quentin (Jack D. Oetli, Captain).

The pairings for the first round were as follows:

Eastern Division			Western Division		
Date	Home Team	Visiting Team	Date	Home Team	Visiting Team
21.X.68	Martinez B	Livermore A	21.X.68	Alameda	Hayward
21.X.68	Martinez A	Livermore 0	22.X.68	Newark	Oakland S
22.X.68	Walnut Crk	Concord A	25.X.68	Richmond	Oakland 0
			Bye	San Quentin	

(Continued on page 5.)

\*\*\*PUBLICATION DATA\*\*\*

Editors  
Central California  
Chess Association  
c/o Post Office Box 1622  
Oakland, California 94604  
Telephone: (415) 636-1892

Scacchic Voice is edited and published bimonthly (with monthly supplementary issues as needed) by Martin E. Morrison and Elwin C. Meyers, Editors, CCCA, in accordance with Article IV, Section iv (f) of the Bylaws of the CCCA, which directs the Editors to "edit and publish the official organ of the CCCA and all business proceedings of the CCCA, to provide a system of communication among the members and affiliates of the CCCA." Every member of the CCCA, i.e., every member of a chess club or organization affiliated to the CCCA, automatically receives a Scacchic Voice subscription mailed to his home gratis.

The CCCA is a nonprofit, democratic organization and an affiliate of the United States Chess Federation. The objects of the CCCA are: "(a) to serve as a regional coordinator of chess activities, clubs, and players; (b) to conduct or sponsor tournaments, leagues, matches, and other forms of chess competition, alone or in conjunction with other chess clubs or organizations; (c) to maintain a system of ratings of the members of the CCCA to supplement those of the USCF; (d) to provide an organ of communication among the members and affiliates of the CCCA, to be published not less than bimonthly; (e) to support the affiliates of the CCCA in every feasible way; (f) to promote the game of chess and the USCF" (Article II, Section i of the Bylaws of the CCCA). Any Central California chess club or organization supporting these objects is invited to apply for affiliation to the CCCA, with benefits for its members which include a Scacchic Voice subscription, a USCF-CCCA rating, discounts on chess equipment and USCF memberships, and full privileges of participation and voting at CCCA business meetings.

NONMEMBER SUBSCRIPTIONS: \$2.00 per annum.

BACK NUMBERS: 25¢.

ADVERTISEMENTS: \$4.00 per eighth page per issue. \$20.00 per insert per issue. (This cost is one cent cheaper per piece for mailing tournament circulars, etc., than postage costs alone.) Classified advertisements: 7½¢ per word per issue on any subject.

The opinions expressed in the editorials and by columnists are those of Scacchic Voice's editors or those of individual columnists. They do not necessarily constitute an official policy of the CCCA or any of its affiliates. All unsigned articles were written by the editors.

Submission of material (including photographs) by readers is encouraged and becomes the property of the editors. Each CCCA affiliate is responsible for sending its own news material to the editors. To be assured of consideration for publication, news and tournament data should be received at the above address thirty days preceding the month of issuance. Other material (including columns) should be received at the above address sixty days preceding the month of issuance. Material should be typewritten, following the style used in this magazine.

Comments from readers on any feature of this magazine will be appreciated. Letters for publication in the "Letters to the Editors" column should be marked "For Publication." Correspondence to the editors should be sent to the above address; that to any other member of the staff, to that member, in care of the editors.

Material published in this magazine may be used by other publications if credit is given to Scacchic Voice (including its editors and address) and if the editors are sent a copy of the issue containing the material.

\*\*\*CCCA OFFICERS\*\*\*

CHAIRMAN  
2159 Mount Diablo Street, Concord 94520  
SECRETARY  
5 Abbey Court, Walnut Creek 94529  
TREASURER  
5315 MacDonald Avenue, El Cerrito 94530  
LEAGUE DIRECTOR  
231 Twelfth Street, Richmond 94801  
RATING ADMINISTRATOR  
23716 Lynn Street, Hayward 94541  
EDITORS  
c/o Post Office Box 1622, Oakland 94604  
  
c/o Post Office Box 1622, Oakland 94604

JEROME M. LONG  
682-3497  
SALEH MUJAHED  
935-2489  
LEONARD TROTTER  
233-1595  
JACK W. DENNIS  
233-1401  
EVERETT MC NALLY  
783-8763  
MARTIN E. MORRISON  
636-1892  
ELWIN C. MEYERS

PUBLICITY DIRECTOR  
 27858 Tampa Avenue, Hayward 94544  
 Members should feel free to contact their officers regarding any aspect of  
 CCCA business.

RICHARD SHORMAN  
 782-5029

\*\*\*CCCA AFFILIATES\*\*\*

ALAMEDA CHESS CLUB Mondays, 7:00-10:30 p.m.  
 McKinley Park Rec. Cen., Walnut St. and Buena Vista Ave., Alameda -  
 Mailing Add.: c/o Darrell Freeman, Pres. pro tempore, 465 Buena Vista Ave.,  
 Apt. 204, Alameda 94501 523-3584

BERKELEY YMCA CHESS CLUB Wednesdays, 7:00 p.m.  
 Palm Rm., Berkeley Cen. YMCA, 2001 Allston Wy., Berkeley 94704 848-6800

COLLEGE OF THE SEQUOIAS CHESS CLUB Tuesdays, 12:00 m.-1:00 p.m.  
 Rm. 338, College of the Sequoias, Visalia -  
 Mailing Add.: c/o Chris A. Fotias, College of the Sequoias, Visalia 93277  
 (209) 732-1835

CONCORD CHESS CLUB Fridays, 7:00-11:30 p.m.  
 Concord Rec. Cen., 2974 Salvio St., Concord 94520 687-2585

HAYWARD CHESS CLUB Mondays and Fridays, 8:00-11:00 p.m.  
 Hayward Arts and Sciences Cen., 2058 "D" St., Hayward -  
 Mailing Add.: c/o Richard Shorman, Pres., 27858 Tampa Ave., Hayward 94544  
 782-5029

LIVERMORE CHESS CLUB First and third Fridays, 7:30-11:30 p.m.  
 Old Library, Carnegie Bldg., Fourth and "J" Sts., Livermore -  
 Mailing Add.: c/o Harold Barnett, Sec., 677 Caliente Ave., Livermore 94550  
 447-4588

MARTINEZ CHESS CLUB Mondays, 7:30 p.m.  
 1111 Ferry St., Martinez 228-1796  
 Mailing Add.: c/o Rudy R. Quintero, Pres., 305 Christie Dr., Martinez 94553

MONTEREY PENINSULA CHESS CLUB\* Mondays and Thursdays, 7:30 p.m.  
 Monterey Youth Cen., Lake El Estero, Camino El Estero and Pearl Sts., Monterey  
 (Mondays) (408) 372-8121  
 Casa Alvarado Chess Center, 494 Alvarado St., Monterey (Thursdays) (408) 372-9790

NEWARK CHESS CLUB Tuesdays, 7:00-10:30 p.m.  
 Newark Comm. Cen., Cedar Blvd., Newark 793-1400  
 Mailing Add.: c/o Hans Poschmann, Tournament Dir., 4621 Seneca Park Ave.,  
 Fremont 94538

OAKLAND CHESS CLUB Fridays, 7:00-11:30 p.m.  
 Multipurpose Rm., Lincoln Elem. School, 225 Eleventh St., Oakland 444-9831  
 Mailing Add.: P. O. Box 1622, Oakland 94604

ORINDA CHESS CLUB Thursdays, 7:30 p.m.  
 Orinda Comm. Church, 10 Irwin Wy., Orinda Village, Orinda -  
 Mailing Add.: P. O. Box 504, Orinda 94563 254-4059 (Duncan D. Campbell, Pres.)

RICHMOND CHESS CLUB Fridays, 7:00 p.m., except the first Thursday instead of  
 the first Friday

Our Lady of Mercy Church, 301 W. Richmond Ave., Point Richmond -  
 Mailing Add.: c/o Leonard Trotter, Sec., 5315 MacDonald Ave., El Cerrito  
 94530 233-1596

SAN QUENTIN CHESS CLUB Prison inmates only  
 Mailing Add.: c/o Jack D. Oetli, Sponsor, Intern Coach, Dept. of Corrections,  
 California State Prison, San Quentin 94064 454-1460

VISALIA CHESS CLUB Fridays, 7:30 p.m.  
 Rec. Park Bldg., 345 No. Jacob St., Visalia (209) 732-3411  
 Mailing Add.: c/o Chris A. Fotias, Sec.-Tr., 1615 W. Kaweah Ave., Visalia 93277

WALNUT CREEK CHESS CLUB Tuesdays, 7:00 p.m.  
 Walnut Creek Park and Rec. Bldg., Civic Dr. and No. Broadway, Walnut Creek  
 935-3300

Mailing Add.: P. O. Box 391, Walnut Creek 94597

\*Temporarily suspended from active membership, "since it is in the process of re-organizing its financial and constitutional structure and is therefore unable to pay its assessments for a time."

----- (paid advertisement) -----

Sample Books:  
 XVI Chess Olympia Israel  
 1984 \$3.00  
 Cozens, Boris Spassky's  
 Rise to the Summit \$2.50  
 Keene, Frank Openings  
 \$3.00

Chess Clocks - Sets - Books  
 Please write for free catalog

K. Rattmann  
 2 Hamburg 74  
 Postfach 365  
 Germany



Many other books and maga-  
 zines available.  
 World-wide connexions.  
 PLEASE ATTACH EITHER PER-  
 SONAL CHECK OR INTERNA-  
 TIONAL MONEY ORDER.  
 All prices post-free.

♠ ♠ ♠ ♠ ♠

\*\*\*NEWS\*\*\*

(Continued from page 2.)

After the first round the standings were as follows:

Eastern Division			Western Division		
Rank	Team	Score	Rank	Team	Score
1-3	Concord A	1 -0	1-3	Oakland O	1 -0
1-3	Concord B	1 -0	1-3	Oakland S	1 -0
1-3	Livermore A	1 -0	1-3	San Quentin	1 -0*
4-5	Livermore O	$\frac{1}{2}$ - $\frac{1}{2}$	4-5	Alameda	$\frac{1}{2}$ - $\frac{1}{2}$
4-5	Martinez B	$\frac{1}{2}$ - $\frac{1}{2}$	4-5	Hayward	$\frac{1}{2}$ - $\frac{1}{2}$
6-8	Martinez A	0 -1	6-7	Newark	0 -1
6-8	Orinda	0 -1	6-7	Richmond	0 -1
6-8	Walnut Creek	0 -1	*A bye, which is scored as a win.		

Pairings for November, December, and January:

Eastern Division				Western Division			
Date	Home Team	Visiting Team	Team	Date	Home Team	Visiting Team	Team
15.XI.68	Livermore A	Orinda		9.XI.68	San Quentin	Richmond	
15.XI.68	Concord A	Martinez A		15.XI.68	Oakland O	Oakland S*	
15.XI.68	Livermore O	Walnut Creek		18.XI.68	Hayward	Newark	
15.XI.68	Concord B	Martinez B			Bye	Alameda	
6.XII.68	Livermore A	Concord A		6.XII.68	Oakland S	Hayward*	
6.XII.68	Livermore O	Concord B		7.XII.68	San Quentin	Oakland O*	
9.XII.68	Martinez A	Walnut Creek		9.XII.68	Newark	Alameda	
16.XII.68	Martinez B	Orinda			Bye	Richmond	
6. I.69	Martinez A	Concord B*		11. I.69	San Quentin	Oakland S	
13. I.69	Martinez B	Concord A*		13. I.69	Hayward	Oakland O	
14. I.69	Walnut Crk	Livermore A		20. I.69	Alameda	Richmond	
16. I.69	Orinda	Livermore O			Bye	Newark	

\*The following changes have been made in the original schedule (team captains N. B.): 15 November, Oakland Oaks are the home team against the Oakland Stingers; 6 December, advanced from 13 December; 7 December, advanced from 14 December; 6 January, advanced from 9 January; 13 January, advanced from 16 January.

New CCCA Assistant Publicity Director Reports Club Tourney

Chris A. Fotias, made CCCA Assistant Publicity Director for Tulare County at the 11 October CCCA meeting, also happens to be Secretary-Treasurer of the Visalia Chess Club and Sponsor of the College of the Sequoias Chess Club—a busy man! He reports that the Visalia Chess Club is just beginning a double round robin tournament. One section is composed of ten adults and teens; another, of six children.

Trenberth, Stocksdale, Gerhardt Win OCC Tourney

From August to October a five round Swiss System open tournament was held at the Oakland Chess Club. Winner of the tournament and rewarded with the A Division prize was Robert R. Trenberth, who totaled a perfect score of 5-0. Kim Stocksdale, won the B Division with a 4-1 tally. Jerry Gerhardt captured the C Division, scoring 3 $\frac{1}{2}$ -1 $\frac{1}{2}$ . The other participants placed as follows: Raymond Ng (4-1), Janis Salna (4-1), Michael Weber (4-1), Gary T. Weber (3-2), Raymond L. Cuneo (3-2), Craig Tabler (3-2), Theodore E. Anderson (3-2), Fred W. Van Sant (3-2), Margret Sloane (3-2), Louis Osternig (2 $\frac{1}{2}$ -2 $\frac{1}{2}$ ), James S. Dorfman (2 $\frac{1}{2}$ -2 $\frac{1}{2}$ ), Albert Ramirez (2-3), Lawrence Yale (2-3), Fred Hibbler (2-3), Richard Lee (2-3), Dennis Fung (2-3), R. Douglas Turney (1-4), Jack W. Dennis (1-4). Photograph on page one.

Mechanics to Host 1968 Northern Cal Champ

A major USCF event is scheduled 30 November-1 December at the Mechanics' Institute Chess Room, Mechanics' Institute, Fourth Floor, 57 Post Street, San Francisco. Named the 1968 Northern California Championship, it offers a total prize fund of \$400, plus entry into the State Championship Finals. The entry fee is \$10 before 30 November, \$12 at the time of final registration, which is 9:00 a.m., Saturday, 30 November, at the tournament site. In addition, USCF and CSCF membership cards are required, or you may join these organizations at the tournament. Guaranteed prizes: first, \$100, plus \$50 entry fee into the State Finals; second, \$60; third, \$30. Best A will net \$50, second A, \$30, best B, \$40, second B, \$20; best C, \$20, best Unrated, \$20. Send entry fee and inquiries to William G. Addison, Director, Mechanics' Institute Chess Club, 57 Post Street, San Francisco 94104.

## \*\*\*BUSINESS PROCEEDINGS OF THE CCCA\*\*\*

A regular meeting of the Central California Chess Association was held on Friday, 11 October 1968, in the Faculty Dining Room of Lincoln Elementary School, 225 Eleventh Street, Oakland (the Oakland Chess Club's quarters). The meeting was called to order at 8:08 p.m. by the Chairman, Jerome M. Long, the Secretary, Saleh Mujaned, being absent. It was adopted by general consent that the Editor, Martin E. Morrison, serve as Secretary pro tempore.

The total attendance for the meeting was as follows: Jerome M. Long (Concord Chess Club); Carl R. Ehmann, Jerry Friedman, Richard Shorman (Hayward Chess Club); Hans Poschmann (Newark Chess Club); James S. Dorfman, Edwin C. Meyers, Martin E. Morrison, Gary F. Weber (Oakland Chess Club); Jack W. Dennis, Leonard Frottier (Richmond Chess Club); Saleh Mujaned (Walnut Creek Chess Club)--six of fourteen affiliates, twelve members.

It was moved by Mr. Meyers, seconded by Mr. Morrison, and adopted unanimously THAT THE MINUTES OF THE PREVIOUS MEETING (16 AUGUST 1968) BE APPROVED AS PUBLISHED IN THE OFFICIAL CCCA ORGAN, WITH THE FOLLOWING CORRECTIONS: (1) THAT THE DATE OF THE MEETING BE CORRECTED TO "16 AUGUST 1968" FROM "16 JULY 1968"; (2) THAT THERE BE ADDED TO MR. FROTIER'S MOTION AT THE BOTTOM OF PAGE TEN (OCTOBER 1968 ISSUE OF THE CCCA ORGAN) "THE BANK OF AMERICAN WILL HENCEFORTH MAKE SERVICE CHARGES ON CCCA'S ACCOUNT."

It was moved by Mr. Morrison, seconded by Mr. Friedman, and adopted unanimously THAT ON THE APPLICATION OF MR. JACK W. DENNIS, SPONSOR, SAN JUANITO CHESS CLUB, IN A LETTER DATED 26 AUGUST 1968 TO THE OFFICIAL ORGANIZATION, THE SAN JUANITO CHESS CLUB BE AFFILIATED TO THE CCCA.

The Treasurer, Mr. Frottier, gave the following report:

OFFICE OF THE TREASURER OF THE CCCA	
FOR THE PERIOD 16 AUGUST 1968 TO 4 OCTOBER 1968	
<u>Receipts</u>	
Balance on hand 16 August 1968 .....	\$44.00
Bimonthly assessment for San Juanito Chess Club (one year, eight members) .....	\$ 9.60
Board Fee of the CCCA Team Match League (San Juanito Chess Club) .....	10.00
Monthly assessment of 8 August 1968 for Hayward Chess Club (5 new), Martinez Chess Club (20), Oakland Chess Club (55), Walnut Creek Chess Club (9) .....	17.80
	<u>\$77.33</u>
<u>Disbursements</u>	
To the Treasurer for postage .....	1.00
To the Editors for the official organ .....	\$19.85
Balance on hand 4 October 1968 .....	14.48
Total .....	\$45.33

It was reported by the Editor, Mr. Morrison, that income from sales of advertising in the next issue of the organ could be \$88 to \$122; that in one-half year about twenty copies of the Blue Booklet and Encyclopaedia of Chess for Central California, published by the Editors with the support of the CCCA (v. minutes of the 16 August 1968 CCCA meeting), had been sold, all income now being profit for the CCCA; that affiliates were responsible for sending to the Editors their own news and announcements, which would have priority of publication in the official organ.

Under a suspension of the rules, adopted by general consent, to allow the Chairman to make a motion from the chair, it was moved by the Chairman, seconded by Mr. Shorman, and adopted by general consent THAT MR. MORRISON BE GIVEN A VOTE OF THANKS FOR VOLUNTARILY TAKING IT UPON HIMSELF TO RAISE MONEY FOR CCCA BY SOLICITING ADVERTISING FOR THE OFFICIAL ORGAN.

At this point the Secretary, Mr. Mujaned, entered and took over the duties of Secretary.

It was also reported by the Editor, Mr. Morrison, that he had received a letter from Mr. Guthrie McClain, San Francisco Bay Area Director, California State Chess Federation, to the effect that he would like to discuss "such a body of keen chess players [CCCA] be[ing] in the folds of the California State Chess Federation."

According to the CCCA's resolution of 16 August 1968, the Publicity Director, Mr. Shorman, with the advice of the CCCA, tendered the appointment of the Assistant Publicity Directors. It was moved by Mr. Morrison, seconded by Mr. Frottier, and adopted unanimously THAT THE CCCA CONSENT TO THE PUBLICITY DIRECTOR'S APPOINTMENT OF THE FOLLOWING AS ASSISTANT PUBLICITY DIRECTORS IN THEIR RESPECTIVE AREAS: STEPHEN NELSON (ALAMEDA AREA, ALAMEDA COUNTY); HANS POSCHMANN (NEWARK AREA, ALA-

MEDA COUNTY); RICHARD LEE (OAKLAND AREA, ALAMEDA COUNTY); ELLIS PLASTRIK (CONTRA COSTA COUNTY); WILLIAM KENNEDY (MONTEREY COUNTY); CHRIS A. FOTIAS (TULARE COUNTY). It was moved by Mr. Shorman, seconded by Mr. Morrison, and adopted by general consent THAT THE PUBLICITY DIRECTOR BE ALLOWED TO POSTPONE THE APPOINTMENT OF THE ASSISTANT PUBLICITY DIRECTOR OF MARIN COUNTY TO THE NEXT MEETING.

It was moved by Mr. Morrison, seconded by Mr. Shorman, and adopted by general consent THAT MR. PLASTRIK'S REPORT ON THE BOARD OF DIRECTORS MEETING OF THE BOYS' CLUBS, THE LEAGUE DIRECTOR'S REPORT ON MR. MC NALLY'S AND MR. POSCHMANN'S MOTIONS RE SUGGESTED TOURNAMENTS, AND MR. LEE'S COMMITTEE REPORT ON TROPHIES BE POSTPONED TO THE NEXT MEETING.

It was moved by Mr. Morrison, seconded by Mr. Shorman, and adopted unanimously THAT MR. REICH'S WRITTEN RESIGNATION FROM THE OFFICE OF RATING ADMINISTRATOR BECAUSE OF HIS RETURN TO SCHOOL BE ACCEPTED.

It was moved by Mr. Morrison, seconded by Mr. Dennis, and adopted unanimously THAT SINCE MR. CLIPSON HAS TENDERED HIS RESIGNATION FROM THE OFFICE OF LEAGUE DIRECTOR ORALLY IN TELEPHONE CONVERSATIONS TO THE CHAIRMAN AND THE EDITOR, MR. MORRISON, HIS RESIGNATION BE DEEMED OFFICIALLY TENDERED AND THAT IT BE ACCEPTED.

It was moved by Mr. Morrison, seconded by Mr. Poschmann, and adopted by general consent that Article IV, Section iii, of the Bylaws of the CCCA be suspended to allow the election of League Director and Rating Administrator at this meeting. It was moved by Mr. Morrison, seconded by Mr. Ehmman, and adopted unanimously that there be nominations from the floor and election by ballot first for League Director, then for Rating Administrator. Mr. Morrison invoked Article V, Section iv, of the Bylaws to order a vote by affiliates for each office.

Messrs. Theodore E. Anderson and Jack W. Dennis were nominated as League Director. The CCCA then proceeded to ballot.

It was moved by Mr. Morrison, seconded by Mr. Friedman, and adopted unanimously that the CCCA recess for five minutes while the votes were counted. The Chairman declared the meeting recessed for five minutes at 9:00 p.m.

The meeting was again called to order at 9:05 p.m., and the Chairman announced the result of the balloting:

Mr. Dennis received .....10  
Mr. Anderson received ..... 4  
Necessary for election ..... 8

THE CHAIRMAN DECLARED MR. DENNIS ELECTED AS LEAGUE DIRECTOR.

Messrs. Everett McNally, Jerry Friedman (declined), Saleh Mujahed (declined), Raymond Ng (declined), Theodore E. Anderson, Hans Poschmann (declined), and Richard Lee (declined) were nominated as Rating Administrator. The CCCA then proceeded to ballot. After the vote had been counted, the Chairman announced the result of the balloting:

Mr. McNally received .....7  
Mr. Anderson received .....3  
Necessary for election .....6

THE CHAIRMAN DECLARED MR. MC NALLY ELECTED AS RATING ADMINISTRATOR.

It was moved by Mr. Dennis, seconded by Mr. Morrison, and adopted unanimously THAT ARTICLE III, SECTION D, OF THE CCCA LEAGUE RULES BE AMENDED BY STRIKING OUT: "THE BOARD FEE SHALL NOT BE LOWERED TO LESS THAN \$6."

It was moved by Mr. Meyers, seconded by Mr. Morrison, that no CCCA League match, original or postponed, be held on the day of a CCCA meeting, and that if a match is so held, the results be void. It was moved by Mr. Dennis, seconded by Mr. Friedman, and adopted, to amend the motion by substituting for it: THAT THE LEAGUE DIRECTOR NOT SCHEDULE CCCA LEAGUE MATCHES ON THE DAY OF A CCCA MEETING IF AT ALL POSSIBLE. The motion, as amended, was adopted.

It was moved by Mr. Morrison, seconded by Mr. Dennis, and adopted unanimously THAT THE FIRST CCCA LEAGUE MATCH BE HELD IN OCTOBER, THE SECOND IN NOVEMBER, THE THIRD IN DECEMBER, ETC.

It was moved by Mr. Dennis, seconded by Mr. Morrison, and adopted unanimously THAT THE CCCA'S NEXT REGULAR MEETING IN JANUARY BE HELD ON FRIDAY, 10 OCTOBER 1969, 8:00 P. M., AT 225 ELEVENTH STREET, OAKLAND (THE OAKLAND CHESS CLUB'S QUARTERS).

It was moved by Mr. Morrison, seconded by Mr. Shorman, and adopted unanimously THAT A STANDING COMMITTEE OF TWO, TO CONSIST OF THE TREASURER OF THE CCCA, AND MR. JERRY FRIEDMAN, TREASURER, HAYWARD CHESS CLUB, BE ESTABLISHED TO SELL CHESS CLOCKS, PURCHASED AT A DISCOUNT FROM KURT RAFFMAN, OF WEST GERMANY, FOR CCCA, THE PRICE TO BE \$12.50; THAT NO MONEY BE USED FROM CCCA FUNDS, BUT THAT A LOAN BE TAKEN OUT WITH THE HAYWARD CHESS CLUB, AND THE PRINCIPAL AND INTEREST (5%) BE PAID BACK AS SOON AS POSSIBLE WHEN THE CLOCKS ARE SOLD, THE PROFIT TO GO INTO THE CCCA GENERAL FUND. It was moved by Mr. Meyers, but not seconded, that the motion be amended by striking out "\$12.50" and inserting "\$11.00."

It was moved by Mr. Morrison, seconded by Mr. Shorman, and adopted unanimously

THAT THE CCCA DIRECT ITS PUBLICITY DIRECTOR AND HIS ASSISTANTS TO INITIATE A USCF MEMBERSHIP CAMPAIGN AT THE CCCA'S 20% DISCOUNT, FOR THE MONTHS OF NOVEMBER AND DECEMBER, SINCE THREE CCCA AFFILIATES WOULD SOON HOLD USCF TOURNAMENTS AND BECAUSE OF THE USCF'S "12x12" MEMBERSHIP DRIVE.

It was moved by Mr. Morrison, seconded by Mr. Dennis, and adopted unanimously THAT THE CCCA AUTHORIZE ITS TREASURER TO PAY ONE HALF THE COST OF THE POST OFFICE BOX SHARED WITH THE OAKLAND CHESS CLUB, BEGINNING JANUARY 1969.

It was moved by Mr. Morrison, seconded by Mr. Dennis, and adopted unanimously THAT IF A CCCA MEMBER IS A FULL, PAYING MEMBER OF MORE THAN ONE CCCA-AFFILIATED CLUB, EACH CCCA-AFFILIATED CLUB OF WHICH HE IS A FULL MEMBER PAY A BIMONTHLY ASSESSMENT FOR HIM.

It was moved by Mr. Friedman, seconded by Mr. Poschmann, and adopted THAT THE MEETING ADJOURN SINE DIE. The Chairman declared the meeting adjourned sine die at 9:46 p.m.

\*\*\*NEWS\*\*\*

(Continued from page 5.)

Oakland Chess Club to Host Christmas Party

On Friday, 13 December, the Oakland Chess Club will commemorate the last club meeting of the year and the Christmas season by presenting a Christmas party. All chess players are invited to the party, although present plans are to charge 50¢ of nonmembers of the club, whereas members will celebrate free of charge. The club has outlined the evening tentatively as follows: cake and coffee hour from 8:00 p.m. to 9:00 p.m., followed by a rapid transit chess tournament; door prizes and little gifts will be given away, and all the while players will be serenaded with music appropriate to the season. The night promises to be a memorable occasion and to give chess players an opportunity to associate with their fellows on a more informal basis at this festive time of year.

Members of the club and others should note that the club will be closed on the Thanksgiving holidays, 29 November, the Christmas holidays, 20 and 27 December, the Federal holidays, 21 February, and Good Friday, 4 April. Players should make a note of these dates.

Oakland's Ted Anderson Heads Bay Area Chess League Again

Mr. Theodore E. Anderson, President, Oakland Chess Club, is once again the coordinator of the Bay Area Chess League (for schools). The stunning thirty-eight teams entered are divided into eight divisions: (1) El Camino, Oceana, Half Moon Bay; (2) Buchser, Los Gatos, Santa Clara, Saratoga; (3) Gunn, Menlo Atherton, Mountain View, Los Altos, St. Francis; (4) Abraham Lincoln, James Lick, Piedmont, Pioneer, W C Overfeit, Willow Glen; (5) Irvington, J F Kennedy, Mission San Jose, Newark, Washington; (6) Canyon, Castro Valley, Hayward, Mount Eden, Sunset Tennyson; (7) Arroyo, Marina, San Leandro, San Lorenzo; (8) Alameda, Campolinda, Encinal, Oakland Tech.

Any other possible high school team interested in joining the league should contact Mr. Anderson, Alameda Unified School District, Guidance Department, Alameda 94501.

------(paid advertizement)-----

	*	
	***	
The HAYWARD CHESS CLUB	****	and hopes to see you all
takes this opportunity	*****	at the HAYWARD CHESS FESTIVAL
to wish all the members	*****	Sunday, 22 June.
of the CCCA	*****	(More details to follow
a MERRY CHRISTMAS	*****	in later issues of <u>Scacchic Voice</u> .
and a very	***	MERRY CHRISTMAS
HAPPY NEW YEAR	***	HAPPY NEW YEAR
	***	

------(paid advertizement)-----

CONNOISSEURS CURIOSITY SHOP  
Box 3063--Merchandize Mart  
Chicago, Illinois 60654

requests you to direct your attention to our fine chess sets and boards illustrated on the enclosed circular. Chessboards are carried only in the popular 20" full size, finely inlaid. Oriental designs will be available soon.

BOTH CHESS SETS AND CHESSBOARDS ONLY \$18.00.

These are wholesale prices, available only to Scacchic Voice readers. "We grant that nowhere will you find such items, especially at these prices."

ALL ITEMS ARE ORDERED AND SHIPPED DIRECTLY FROM OUR CURIOSITY SHOP.

We take care of the transportation and handling



\*\*\*LETTERS TO THE EDITORS\*\*\*

EDITORS:

In my three short years in playing the game of chess, the latter year in promoting the intriguing game, I have seen many facets and views of the many people involved.

I think the thing that impressed me most is the select and individualistic breed of the chess player. He seems to be set apart from the rest of society, inasmuch as he has the assets of concentration and patience, that are so uncommon in our fast-moving society.

The ability to use the foresight and strenuous planning that chess requires is advantageous to our society. When I see an adolescent becoming more and more involved in the game, I see youth beginning to use the facilities of mind that God gave him. Youth using his capacities to the fullest extent, rather than his fists, to defeat his opponent is in reality a prerequisite to maturity.

If every youth in this country would play chess and use chess to build his foundation of knowledge, I feel there would be an eventual end to the violence and unrest in our world.

I feel the people behind the promotion of chess do much more than that for which they are given credit in building for tomorrow. I can only hope that this wonderful game of competition of mind will grow beyond imagination and, in this growth, a society better fit for everyone to live in.

DENNIS J. REICH  
Concord Chess Club

[The above letter was sent by Mr. Reich also to Mr. Jerome Waldie, Congressman, Contra Costa County.--EDS.]

\*

EDITORS:

. . . I was most pleasantly impressed with your business-like tone and enthusiastic support of the USCF, in contrast to the crusading note which appears in a number of your sister publications. . . .

MAJOR ARTHUR C. JOY  
President, European Chess District,  
United States Chess Federation

\*

EDITORS:

. . . I should like to take the time to thank you for all that you have done for me in advancing my knowledge in chess and for the information you sent to me so that I could continue to learn through the local club.

RAYMOND E. LOVE  
Past President, Alameda Chess Club

\*

MARTIN MORRISON, BOARD OF DIRECTORS, FELLOW MEMBERS, CCCA:

As I leaned back from my studies the other day, I stopped to think how great the game of chess really is. It is truly a shame that only a small percentage of people really come to know the game for what it is. So few realize what pains and work the people trying to promote and build chess, such as ours of CCCA, go through to make the game rewarding. These workers, as I shall call them, spend many hours per week trying their best to promote and build without any material compensation. Most surely they never receive the credit they deserve. Most of us simply take for granted the advantages they freely give to us.

With my recent resignation from CCCA's Board of Directors, I thought that possibly I could do some small part to give them a hand. Well, with a little work I managed to form a class of instruction in chess at Diablo Valley College in Pleasant Hill, California. To my knowledge, this is the first of its kind anywhere at a college or university. I personally feel this may be a successful start in offering a course of instruction completely operated as part of the curriculum at a college, i.e., a course of instruction involving a game of this type. I can only hope it will be a great success and possible be started on other campuses around the country.

If you have the opportunity, I hope you will attend my class, and most important—try to form your own. Give these working people a hand and let them know they are appreciated.

DENNIS J. REICH  
Concord Chess Club

\*\*\*CHESS IS MY HOBBY\*\*\*  
 By JAMES B. REYNOLDS  
Seacchic Voice Analysis Columnist

What goes on in the mind of a team player? Actually, in future writings, I shall go into more detail about how I think a team player should really think and play, but in the following game I shall come as close as I can to what a team player thought during the process of his game in team match play. Many times I was team captain prior to this game (I was fortunate enough to captain three championship teams in five years), but in the following game I was a mere team member. This was a match between the Precita Valley Chess Club (which I directed) and the Mechanics' Institute B/1 team, as they called it. The championship of the Bay Area Chess League, B Division, was involved. Precita Valley, which had finished last the previous year, needed only to win the match to take it all. The reason I think this game shows what goes on in the mind of a team member is that the notes were made shortly after the game (and never changed), as all members of the Precita Valley team kibitzed their games and wrote down notes as they were celebrating in a nearby cafeteria. The game was played on 17 May 1958.

White: V. Bedjanian

Black: James B. Reynolds

French Defense

1 P-K4	P-K3
2 P-Q4	P-Q4
3 N-QB3	PxP

The Rubenstein variation, inferior for Black. I had contemplated 3...B-N5; 4 P-K5, P-QN3!, a much talked-about new variation, and I had been studying it all week; however, I decided to choose the now defunct and inferior Rubenstein variation, as I felt I should feel more at home and my opponent would probably know less about it.

4 NxP	N-Q2
5 B-Q3	KN-B3
6 B-KN5	B-K2
7 N-K2	. . .

7 N-KB3 looks more natural for White, and it would also cover his bishop at N5. Already two quick games were over. Ivan Vegvary lost to Hope on board seven, and Leighton Allen won for us over Hunting on board two, to make it 1-1.

7 . . .	NxN
8 BxB	QxB
9 BxN	Q-N5ch

I debated with myself on this move. It is usually unwise to go after a pawn in the early stages of a game. Probably more sound was 9...0-0; 10 Q-Q3, N-B3, but I decided to be bold and to take chances in hopes of upsetting my nervous opponent.

10 N-B3	. . .
---------	-------

My opponent was upset! 10 P-QB3 was better, i.e., 10...QxNP; 11 R-QN1, Q-R6; 12 Q-B2, and White seems to have more play, whereas Black's queen is misplaced.

10 . . .	QxNP
11 N-R4	Q-N5ch
12 P-B3	Q-B5

Perhaps 12...Q-K2 was a more graceful retreat, but my idea was to get my opponent to misplace his pieces.

13 B-Q3	Q-Q4
14 0-0	0-0
15 Q-B2	N-B3
16 KR-K1	P-QN3
17 R-K5	. . .

And now White gets bold, and with much at stake I was subject also to a little nervousness.

17 . . .	Q-B3
----------	------

See what I mean? 17...Q-Q3 looks better.

18 B-K2	Q-Q3
---------	------

So White's boldness caused me to waste a move.

19 B-B3	R-N1
20 N-N2	B-N2

Being a pawn up, I was anxious to trade pieces, though a win would be questionable. I was willing to take those chances. James Gough just won over Charlie Loveland for us on board three, to make it 2-1.

21 N-B4	Q-Q2
Again, 21...Q-K2 looks more natural.	
22 BxB	RxB
23 R-KN5	. . .
To make room for N-K5.	
23 . . .	R-Q1
24 N-K5	Q-Q3
Of course, not Q-K2 now, as 25 N-B6!	
25 Q-Q3	. . .
Aiming for Q-KB3, to threaten QxN and QxR simultaneously.	
25 . . .	P-B4!

I did not fear 26 Q-B3. I took twenty minutes to decide on this move. I had studied 25...P-N4 and, though the move seems sound and stops 26 Q-B3, I decided it left my QR out of play, whereas the text gives this rook breathing room. My opponent was tickled now and licked his lips, thinking he had me in serious trouble, and our team captain, Dave Gibson, just lost to Fred Wreden on board five, to make it 2-2.

26 Q-B3	. . .
---------	-------

And here Bedjanian got up and danced around. He was Mechanics' Institute B/1 team captain. He was gloating and exclaiming to fellow team mates, and club members, and spectators (many gathered about our board now), "How do you like my game now!" I took another twenty minutes to be sure I had calculated the position correctly.

26 . . .	N-Q4
Simple and obvious, and Bedjanian's mouth dropped.	
27 R-N3	. . .
If 27 P-B4, P-B3! (27...Q-K2 is also playable; 28 N-B6, QxR; 29 NxR, QxN; 30 PxB, etc.); 28 R-N3, PxB; 29 PxB, etc., or 29 PxB, QxP; 30 PxB, etc.	
27 . . .	PxP
28 PxB	. . .
28 P-B4, QxN; 29 PxB, QxP, and Black has a powerful center passed pawn.	
28 . . .	R-B2
The main reason for 25...P-B4!	
29 R-K1	Q-K2
30 N-N4	Q-N4

I was really anxious to trade pieces now, especially queens. Bob Blakemore won over Bill Hawley on board six for us, to make it 3-2. I saw that Noel Renaud was a pawn down on board one with Dan McLeod, and I was a pawn up. Actually, both games appeared to be drawn, which would be okay for us, giving us a 4-3 victory and the championship. I was willing to offer or accept a draw--and Noel said he was thinking the same thing. It was too much for our team captain, and he went out to get coffee.

31 N-K3	Q-B3
32 QxQ	. . .
Interesting is 32 NxN, but it comes out the same unless White gets funny.	
32 . . .	NxQ
33 P-Q5?	. . .
Giving Black an easy win. Best was 33 N-N4, after which would probably follow 33...NxN; 34 RxB, with the win for Black still in doubt.	
33 . . .	PxP
34 N-B5	P-N3
35 N-R6ch	K-B1
36 P-KR3	P-Q5
37 R-KR3	K-N2
38 N-N4	NxN
39 PxB	P-Q6
40 R-Q1	P-Q7
41 R-QN3	R-B8
42 R-N1	RxB/N8
43 resigns	

Cinching the match. I immediately informed Noel of my win so that he'd know the pressure was off. An hour later he and McLeod agreed to a draw to make it 4 $\frac{1}{2}$ -2 $\frac{1}{2}$ , giving us the undisputed championship with a record of 7 $\frac{1}{2}$ -2 $\frac{1}{2}$  (games: 43-27). After that, it was the walk to the cafeteria, kibitzing, and the notes just read.

Ignoring the persistent, musical tinkling of the doorbell, Herr Dekan carefully studied the position of the huge chessmen which were arrayed over the vast marble table. Very deliberately he moved one of the pawns up two squares and stared frowningly for several moments at the result. Then he hurriedly returned all the pieces at their original squares so that the board appeared undisturbed and ready for play. After taking a few more seconds to smooth the ends of his mustache, he slid back his chair and moved toward the door.

The man outside stepped gratefully into the warm, comfortable room, bringing with him a breath of icy air. He was slight and round shouldered, somewhat shorter than Herr Dekan, and his rough clothes and hard calloused hands stamped him as a member of the laboring class. He stood unnaturally still, awkwardly fingering the fringes of his cap.

Herr Dekan took the man's coat and offered him a glass of sherry, which was nervously refused. Shrugging, the host settled back in the deep chair next to the chess table and regarded his visitor thoughtfully.

"From your letter, Herr Kranz, it is plain that you are a chess player, but it is also obvious that this is not your main occupation."

"Indeed not, Mein Herr," the man stammered. His hoarse, rasping voice echoed strangely in the tiny room. "I'm a cobbler by trade. I play chess at night, sometimes with my wife and young son. Never, Herr Dekan, have I so much as read a book about the game. I am all too painfully aware of my ignorance; yet, this opening I have discovered . . . ."

He stopped, groping for words. Herr Dekan lit his pipe and carelessly blew a wide, circular smoke ring, which spiraled toward the ceiling.

"I think I understand, Herr Kranz," he said easily. "Under the rather amazing circumstances you felt that you should come to me, because I am generally recognized as our nation's leading player. Unfortunately . . . ." Herr Dekan paused to flick a tiny gray ash off the collar of his tunic. "Unfortunately, I have found time to give your notes only a most casual perusal. As a matter of fact, I had just sat down with the intention of going over them more thoroughly when you rang the doorbell."

With a sweep of his hand he indicated the freshly arranged chess table. "Now let me see whether I understand your claim correctly," he said. "The basis of your most extraordinary idea is that, given the white pieces, you can force a checkmate inside of twenty moves regardless of what moves your opponent may make. In other words, no defense by Black will prevail against the attack you have devised. That, I believe, is the essence of your theory?"

Herr Kranz rubbed his rough hands together nervously. He was clearly awed and embarrassed in the presence of the master. "Yes, Mein Herr."

Lifting one hand to his face to hide a delicate cough, Herr Dekan picked up a piece of paper that lay on the chess table.

"In your letter you may have overlooked the possibility that Black may quite logically move his king's knight to bishop three on his eighth move instead of exchanging pawns; then the white bishop will be under attack."

The cobbler half rose from his chair, his normally tranquil features contracted with excitement.

"I didn't include that variation in my notes, Mein Herr, because it seemed to me to be flagrantly obvious, hardly worthy of your attention. If Mein Herr will but glance at the position, he will see that, in the event he mentions, the bishop does not retreat; instead, the rook occupies the knight's file, and if Black captures the bishop, the white queen gives check and mate is threatened in three directions simultaneously!"

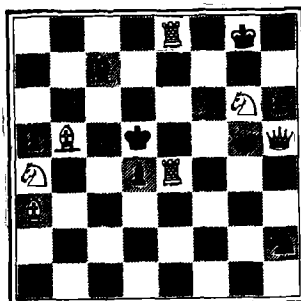
Herr Dekan laughed. It was a bored, condescending chuckle. "Of course, you are right, Herr Kranz. I merely wished to ascertain whether you were familiar with this phase of the attack. Now, perhaps, it is time I gave this theory of yours some serious consideration. If Mein Herr will but glance at the position, he will see that, in the event he mentions, the bishop does not retreat. Although I must confess," the master's eyebrows rose in good humored scepticism, "that I fear I am wasting my time."

Leaning across the table, he began, with the sureness and dexterity which comes with long practice, to move the giant pieces to the various positions designated in Herr Kranz's letter. Occasionally, he would pause and frown at the board, at which times the cobbler shifted uneasily in his chair, anxious to be of assistance. Suddenly aware of his guests nervous fidgeting, Herr Dekan handed him one of the captured men. It was beautifully carved out of pure ivory and was nearly as tall as a man's hand.

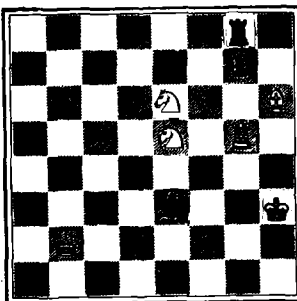
"Perhaps, Herr Kranz, you would like to examine one of these pieces. They were fashioned for me personally and, as far as I know, there are no others like them. I think the bishop, in particular, is a perfect bit of craftsmanship. Notice the broad base and slender, tapering top. Is it not well suited to its rôle as guardian

## \*\*\*MATING MAZE\*\*\*

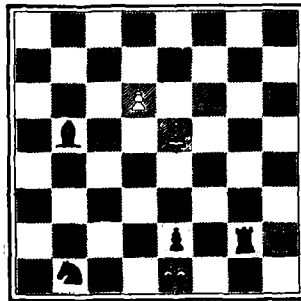
By RICHARD LEE

Scacchic Voice Problems Columnist

No. 43  
W mates in two.



No. 44  
W mates in two.



End Game Study  
W to play and draw.

End game study analysis: Black cannot stop the pawn without loss of the knight. White cleverly manoeuvres Black into forcing a stalemate in hopes of avoiding a draw. 1 R-B5ch, K-N6 (K-N1 draws); 2 RxB, R-N8ch; 3 KxP!, N-B6ch; 4 K-Q1, NxR; 5 P-Q7, N-B6!; 6 P-Q8/Q, R-Q8; 7 K-K3 draw.

## \*\*\*BETTER DEAD THAN READ\*\*\*

(Continued from page 12.)

and chief advisor to His Majesty?"

The cobbler looked at the huge piece cursorily, then placed it back on the table. He was unable to share in the master's enthusiasm, for he had no thoughts for anything other than the men on the board. For a few minutes more Herr Bekan occupied himself with the chessmen; then he pushed back his chair and sat staring dreamily through half-closed eyes at nothing at all. Herr Kranz anxiously studied the master's face, attempting to interpret his imperturbable expression. Ten minutes went by, fifteen, twenty, and still the great man did not speak. Finally, the cobbler could stand it no longer.

"Mein Herr! Please. My theory . . ."

Herr Dekan opened his eyes with a start as though he had forgotten his visitor; then he settled back and began speaking musingly, without looking at Herr Kranz.

"Surely, my dear friend, you must realize that this so-called 'theory' of yours is the purest nonsense. There are so many flaws that I cannot begin to point them all out."

He picked up the white bishop and began turning it over slowly with his long, slender fingers.

"I suppose you are wondering why I did not tell you this sooner, but I was just thinking how ironic it would have been if your ideas had been valid. In one quick stroke you, a common working man, would have relegated the immortals of the chess world, Spassky, Tahl, Botvinnik, Unsicker, and the rest, to the ranks of blundering fools who wasted thousands of hours and untold effort in evolving brilliant combinations when actually any idiot capable of understand the moves of chess could have defeated them simply by memorizing your system. Imagine! The exacting position play of Steinitz, the marvelous, intuitive sacrifices of Alekhine—nothing but unnecessary, superficial, meaningless pushing of pieces! The concept is hideous; it leads me to believe that perhaps the greatest writings, the principles by which men have governed themselves for centuries may likewise be empty and foolish. No, Herr Kranz, I am happy that your system is not infallible; indeed, if it were . . ."

The master shrugged and looked straight into his guest's eyes, "I should hesitate to permit you to leave this room alive."

The cobbler's shoulders sagged a little lower as he reached for his cap.

"I am sorry, Herr Dekan, to have taken so much of your time," he mumbled. Rising, he turned to shuffle from the room.

"I am sorry too, Mein Herr," said Herr Bekan as he fiercely plunged the long, pointed bishop into the cobbler's unguarded back."

The Bridge, (Spring 1968), 30-32, quoted in The Fianchetto, II (July 1968), 30-32.

\*\*\*USCF-CCCA RATINGS\*\*\*  
 By EVERETT MC NALLY  
 Rating Administrator, CCCA

The purpose of USCF-CCCA Ratings, to be published bimonthly, is to give every CCCA member a current rating for participation in USCF and CCCA tournaments and CCCA League play. In this system, a CCCA member having an official USCF rating will be given that rating (no mark after the rating indicates an established rating; \* indicates a provisional rating based on ten to eighteen games [such ratings are less reliable than established ratings]; # indicates a rating based on four to nine games [such ratings are highly unreliable]), which will then be adjusted on the basis of rated play between him and other CCCA members (indicated by \$); however, such an adjusted rating will be reconciled to the official USCF rating of the member whenever a new rating is listed for him in the quarterly rating lists published in Chess Life, the official organ of the USCF (indicated by the original sigla described supra). A CCCA member not having an official USCF rating will temporarily be given his most current CFNC rating (indicated by %), or, if he has no CFNC rating, his most current club rating (indicated by &), or, if he has neither, the Rating Administrator of the CCCA may give him a rating (indicated by /). Once a member having such a rating plays a rated game with another CCCA member, his rating will be adjusted (indicated by \$), and that rating will serve as the basis of further adjustment, unless he obtains an official USCF rating, in which case his rating will be reconciled and adjusted as explained supra. All ratings are adjusted using the USCF formula. USCF ratings have been corrected to the official listing published in June; CFNC ratings, to the official listing published in the summer.

From the above it will be seen that official USCF ratings are the backbone of this rating system, which is therefore called the USCF-CCCA Rating System. It is hoped that in the future all CCCA members will become members of the USCF, so that such a rating system as this will be unnecessary, or so that USCF ratings will need only minor adjustment in the interim between the quarterly publication of official USCF ratings in Chess Life.

\*

Expert ...2000 to 2199		Class C ...1400 to 1599	
Class A ...1800 to 1999		Class D ...1200 to 1399	
Class B ...1600 to 1799		Class E ...1199 and below	
Alaimo, B. (M)	1534% Demasceno, S. (M)	1492% Haller, O. (C)	1469
Alexander, C. (O)	1750& Dennis, J. (O)	1648\$ Hammie, R. (O)	1996%
Anderson, T. (O)	1419# DeRosa, J. (C)	1521% Hansen, B. (O)	UNRTD
Arguello, A. (M)	UNRTD Dobin, L. (O)	UNRTD Hansen, R. (O)	1788
Arnstein, P. (R)	1450% Dorfman, J. (O)	1210# Parais, T. (C)	1550&
Ausmas, R. (H)	1773& Earl, W. (C)	1525% Hayes, G. (O)	935#
Barnett, H. (L)	1060\$ Ehmann, C. (H)	1674% Henderson, D. (C)	1507%
Bartholomew, E. (H)	1586* Eliason, J. (C)	1621% Henderson, J. (C)	1454&
Bass, S. (W)	1420% Erdy, E. (C)	1535% Henderson, M. (C)	1563%
Bauer, F. (O)	1500& Evenson, M. (C)	1500& Hibbler, F. (O)	1643%
Belcher, J. (A)	1562% Ewy, Sioux (C)	1550& Hirstio, V. (C)	UNRTD
Bentson, R. (D)	1613# Ewy, Stan (C)	1619& Hough, R. (O)	1825
Betts, W. (M)	1551& Fleuriot, R. (D)	1649% Hutchinson, J. (H)	UNRTD
Bigelow, G. (W)	1613% Fong, V. (H)	UNRTD Jacob, R. (W)	1585%
Britton, E. (O)	1485% Forthoffer, D. (O)	1986 Jaramillo, J. (C)	1560&
Brown, Jr., P. (R)	1696% Fossaaen, J. (C)	1963 Jemison, W. (R)	UNRTD
Brown, S. (M)	UNRTD Fotias, C. (S, V)	1655 Joshi, P. (R)	UNRTD
Burton, R. (R)	UNRTD Fouch, R. (H)	1550& Kiker, S. (W)	1662%
Bush, J. (C)	1404\$ Frandy, M. (H)	1831& Kitabayashi, S. (M)	1656%
Campbell, D. (N)	1668\$ Freeman, D. (A)	1632% Klinkenberg, D. (A)	1759%
Canciamilla, M. (M)	1506& Friedman, J. (H, O)	1658% Kuehl, L. (C)	1550&
Canfield, E. (H)	UNRTD Fung, D. (O)	UNRTD Lamasney, P. (O)	1805%
Carlson, P. (C)	1532& Garnett, T. (C)	1529% Lambert, W. (D)	1693%
Castellano, W. (H)	1737 Gerhardt, J. (A, O)	1597% Lane, L. (O)	1348%
Chew, W. (O)	UNRTD Gerrand, J. (O)	1600% Lawless, L. (H)	UNRTD
Clapp, D. (C)	1795\$ Geymerd, D. (D)	1677% Lawry, D. (C)	1452&
Claudio, D. (R)	1669% Giley, Jr., J. (M)	UNRTD Lechtaler, C. (D)	1481%
Clipson, R. (C)	1657\$ Glanville, D. (O)	1674# Lee, R. (O)	1688%
Collins, J. (C)	UNRTD Goss, D. (C)	1513% Lim, R. (C)	1591&
Cohen, G. (H)	1543 Greenwald, J. (M)	1691% Long, J. (C)	1798&
Cook, F. (O)	1814% Guzman, R. (C)	1395% Long, T. (C)	1518&
Crossland, M. (O)	1462# Hale, J. (O)	1778# Louie, D. (O)	1684&
Cuneo, R. (O)	1801& Hale, R. (O)	1633# McClain, S. (C)	1550&
DeGroot, M. (N)	1641% Hall, A. (A)	1565* McCollough, R. (C)	1819

McNally, E. (H)	1797\$ Pugh, J. (C)	1559\$ Thach, B. (H)	1594
McNow, M. (W)	1628\$ Quintero, R. (M)	1733* Thompson, D. (C)	1739
McQuarry, M. (D)	UNRTD Ramirez, A. (O)	1646* Thompson, F. (R)	1440%
Marchand, S. (R)	UNRTD Rapoport, D. (O)	1995\$ Thompson, L. (H)	1689%
Marski, W. (O)	1550\$ Reed, T. (M)	1631\$ Tobacco, L. (C)	UNRTD
Merriman, C. (C)	1504\$ Reich, D. (C)	1611\$ Tobacco, T. (C)	1536\$
Merriman, G. (C)	1504\$ Rivera, Jr., M. (C)	1514\$ Trenberth, R. (O)	1905
Meyers, E. (O)	1806\$ Rocklin, R. (C)	1538\$ Trottier, L. (R)	1585\$
Mitchell, D. (O)	1636 Boss, C. (C)	1550\$ Tressz, S. (O)	1837\$
Mitchell, R. (O)	1851 Ross, T. (C)	1550\$ Turner, L. (C)	1697%
Morris, M. (C)	1511\$ Roust, G. (L)	UNRTD Turney, R. (O)	1512%
Morrison, M. (O)	1598\$ Rubsamen, E. (O)	1522\$ Trigg, D. (D)	1650%
Motquin, S. (C)	1552\$ Salna, J. (O)	1871 Ulrich, F.	1606\$
Mujahed, S. (W)	1737\$ Salo, E. (H)	1578\$ Underwood, K. (C)	1498%
Myers, G. (H)	UNRTD Sargent, R. (C)	1504\$ Vadnais, L. (H)	1624
Nace, R. (M)	1684\$ Shiffer, D. (C)	1520\$ Vail, C. (M, W)	1660*
Nelson, S. (A)	1683\$ Schmidt, S. (O)	UNRTD Van Sant, F. (O)	UNRTD
Ng, R. (A, O)	1990* Schulman, S. (O)	UNRTD Virden, J. (C)	1550\$
Norberg, T. (A)	UNRTD Schwab, C. (R)	UNRTD Waddell, E. (R)	UNRTD
Nordell, L. (O)	1732\$ Schwartz, E. (O)	UNRTD Wait, D. (C)	1560\$
Norman, N. (R)	UNRTD Shearer, J. (L)	1620\$ Wait, L. (C)	1609\$
Olander, L. (W)	1763\$ Sherman, D. (D)	UNRTD Weber, G. (O)	1797\$
Olvera, R. (C)	1519\$ Shorman, R. (H)	2012\$ Weber, M. (A, O)	1875%
Olvera, Jr., F. (C)	1603\$ Sletner, A. (O)	1621\$ Weiler, J. (W)	1520
Olvera, Sr., F. (C)	1600 Sloane, M. (O)	1516\$ Weitzner, M. (M)	1533%
Orr, G. (A)	1644\$ Smith, A. (R)	UNRTD Wells, A. (C)	1550\$
Osternig, L. (H, O)	1667\$ Smith, E. (O)	1550\$ Werner, E. (M)	UNRTD
Oyler, M. (C)	1524\$ Sobal, O. (A)	1711\$ West, S. (C)	1531\$
Oyler, R. (C)	1705 Stevens, Jack (C)	1550\$ Westcott, A. (D)	1650%
Parker, W. (O)	1661\$ Stevens, John (C)	1550\$ Westerline, P. (C)	1658\$
Peterson, D. (M)	1512 Stevens, R. (C)	1550\$ Wheeler, J. (H)	1599
Peterson, J. (M)	1510\$ Stocksdale, K. (O)	1641\$ Whitt, G. (D)	1670%
Pico, R. A. (C)	1550\$ Sutton, L. (A)	UNRTD Williams, R. (R)	UNRTD
Pico, R. C. (C)	1550\$ Swanson, R. (M)	UNRTD Wong, H. (O)	UNRTD
Plastrik, E. (M)	UNRTD Switzer, Sr., W. (D)	1632\$	
Powell, Jr., B. (M)	UNRTD Tabler, C. (O)	UNRTD	

Club symbols in parentheses after name:

A Alameda	L Livermore	D Orinda
B Berkeley YMCA	M Martinez	R Richmond
S College of the Sequoias	Y Monterey Peninsula	Q San Quentin
C Concord	N Newark	V Visalia
H Hayward	O Oakland	W Walnut Creek

N. B.: Club ratings play a great part in the USCF-CCCA Rating System; therefore, those clubs which have their own rating systems should furnish monthly a copy of the latest club ratings to the Rating Administrator.

----- (paid advertisement) -----

SAHOVSKA NAKLADA

Zagreb, Zrinjski trg 3, Yugoslavia

invites your attention to our vast list of chess books, bulletins, and magazines on our enclosed circular, especially:

Chess Informant, semiannual, including 700 current games of theoretical importance  
Modern Chess Openings (ed. 67), Marović-Sudić

Sahovski Glasnik, a monthly Yugoslavian chess magazine, including theoretical news, annotated games, bulletins, combinations, problems, etc., all by well-known grandmasters, under the editorship of international grandmasters Marovic and Rabar.

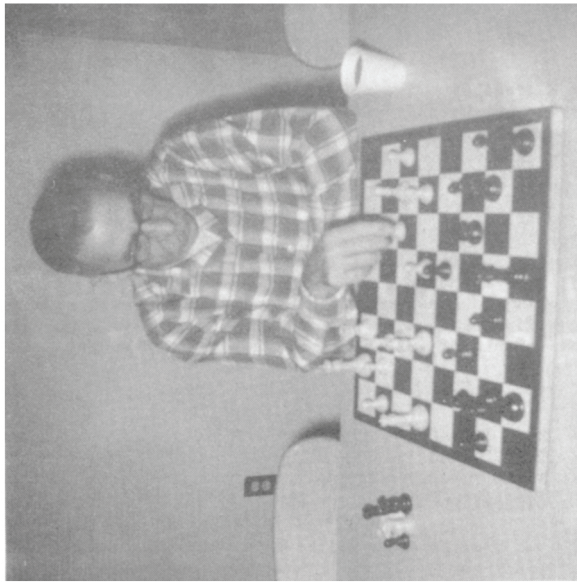
MANY BOOKS AND ALL BULLETINS USE INTERNATIONAL NOTATION

(No knowledge of a foreign language necessary.)

Send a check or money order to Sahovska Naklada, directly to the above address.

\*\*\*QUOTES WITHOUT COMMENT\*\*\*

"Directors should not be allowed to play in tournaments which they direct, or, if they play in a small tournament, they should be ineligible for any prize."  
Texas Knights, IX (August 1968), 192.]



Jack W. Dennis, recently elected League Director of CCCA, makes a tentative move in his postal game with James Hobson, of Victoria, Canada. The game is one of seven Mr. Dennis is playing in the International Blackmar-Diemer Gambit Postal Tournament, of which he claims he has four wins, two marginals, and one probable loss. (Photography by Martin E. Morrison, Editor, CCCA.)

NEXT REGULAR CCCA GENERAL MEMBERSHIP MEETING (ANNUAL MEETING): Friday, 10 January, 8:00 p.m., Lincoln Elementary School, 225 Eleventh Street, Oakland (the Oakland Chess Club's quarters). All CCCA members, i.e., members of any of the fifteen affiliated clubs listed on p. 4 supra may attend and will have a vote. The meeting is "open to nonmembers (also) who shall have the same rights of debate as members. Annual election of officers.

Editors  
 Central California  
 Chess Association  
 c/o Post Office Box 1622  
 Oakland, California 94604  
 Telephone: (415) 636-1892  
 THIRD-CLASS MAIL  
 ADDRESS CORRECTION  
 REQUESTED

ADDRESSEE: PLEASE NOTIFY THE EDITORS AS SOON AS POSSIBLE OF ANY CHANGE  
 IN YOUR ADDRESS OR TELEPHONE NUMBER.

NEXT AFFILIATE ASSESSMENT DUE: 5 December and are delinquent there-  
 after; club officers responsible should send 20¢ per club member  
 and the names and addresses (with ZIP codes) of all members to  
 the CCCA Treasurer, whose address will be found on p. 8 supra.  
 CHESS CLOCKS AT 22-27% DISCOUNT: EHB Extra, brown plastic case, 6"x  
 3"½"; two year guarantee from manufacturer; "the world standard  
 for durable quality and durability at a moderate price" (USCF);  
 only \$12.50. Immediate delivery from CCCA Clock Committee, the  
 CCCA Treasurer and Jerry Friedman, Hotel Claridge, Room 595,  
 634 15th Street, Oakland 94612 (836-4525).

USCF MEMBERSHIPS AT 20% DISCOUNT: \$8 (adult) or \$4 (under 21)--regu-  
 larly \$10 or \$5, respectively--for new or renewal USCF member-  
 ships, if sent to the CCCA Treasurer.  
 NEXT, USCF TOURNAMENTS OF CCCA AFFILIATES: 3rd Annual SF Bay Area  
 Amateur Open Chess Championship, 14-15 December (Oakland CC),  
 New Year Open, 4-5 January (Walnut Creek CC).