
63 Chess Clubs
And Organizations

CIRCULATION
360 Chess Players

51 Chess Publications
and Libraries



SCACCHIC VOICE

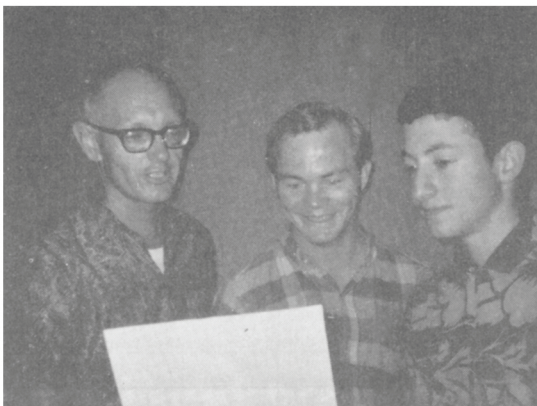
Central California's Chess Magazine
And
Official Organ Of The
Central California Chess Association
(An Affiliate of the United States Chess Federation)

MARTIN E. MORRISON

Editors

. ELWIN C. MEYERS

October-November 1969
Volume II
Numbers vi-vii



CCCA QUALIFIER TO THE 1970 CALIFORNIA STATE CHAMPIONSHIP, David L. Amkraut, of Palo Alto, scoring $4\frac{1}{2}$ in the Central California Chess Association's Adult and Junior Championship, Incorporating Berth Competition for the California State Championship, Berth-Championship Division, will compete in January 1970 with nine other semi-finalists from throughout California to become, hopefully, State Champion. To Mr. Amkraut's right is Rod L. Bobo, of Fresno, who took the First B prize in the Reserve Division of the same tournament with a perfect 5-0 score. To Mr. Bobo's right is First C (Reserve Division) Walter Stuart, also of Fresno, who scored 4-1. All beam at their superb scores, listed on the tournament's wall chart. --Photograph by Richard R. Shorman, CCCA Publicity Director.

- -
*****TOURNAMENT CALENDAR*****

23-24	August	Oakland Chess Club's Sixth Annual Summer Tournament	CFNC	Oakland
23-24, 30-31	August	Western Amateur Championship	USCF	Santa Monica
29 -1	August September	Ventura Marina Chess Festival	USCF	Ventura
30-31	August	1969 Sonoma State College Open	-	Rohnert Park
30 - 1	AUGUST SEPTEMBER	CALIFORNIA OPEN	USCF	MONTEREY
6-7	SEPTEMBER	CENTRAL CALIFORNIA CHESS ASSOCIATION'S CLASS TOURNAMENT AT CONCORD	USCF	CONCORD
27-29	September	Santa Clara Junior Open/Fourth Annual Northern California Class Championships/USCF Sunnyvale Open	CFNC, USCF, Jr.	Sunnyvale
20-21 mid	October November	Carlmont Open 1969 Class Championship Tournament (unconfirmed)	CFNC CFNC	San Carlos Novato
early 13-14	December DECEMBER	Second tournament at Chabot (unconfirmed) OAKLAND CHESS CLUB'S FOURTH ANNUAL SAN FRANCISCO BAY AREA AMATEUR OPEN CHESS CHAMPIONSHIP	CFNC USCF	Hayward OAKLAND
December and January		Third Annual Northern California Junior Chess Championship Tournaments/Playoff Tournament	CFNC	Various
22	June	Eighth Annual Scholarship Chess Festival	-	Hayward

Tournament Organizers: Please let us know as soon as possible of tentative or definite tournament dates, so that we may be able to reserve them for you in the "Tournament Calendar." Details for many tournaments will be found in the "News" section. CCCA'S AND CCCA AFFILIATES' USCF TOURNAMENTS ARE CAPITALIZED IN THE "TOURNAMENT CALENDAR" FOR MEMBERS' SPECIAL CONSIDERATION.--EDS.7

OFFICIAL ANNOUNCEMENT

The Team Captains' Meeting for the 1969-70 CCCA League will be held on Friday, 12 September, at 7:30 p.m., in the Faculty Dining Room of Lincoln Elementary School, 225 Eleventh Street, Oakland (the Oakland Chess Club's quarters). In form, the meeting will be a special business meeting of the CCCA, at which the league rules will be debated and voted upon first, and if any time remains, other items of business may be brought up. Therefore, all members are welcome and will have a vote, and prospective team captains or some representative of affiliates planning to enter a team in the league are especially encouraged to attend. If an affiliate plans to enter a team, but will not have a captain or representative present, it should contact the CCCA Secretary before the meeting. Chess clubs or organizations not affiliated to the CCCA, but wishing to enter a team, are welcome to attend the meeting.

Some questions that will come up in regard to the league organization are:

- (1) will there be a separate division of the league only for all-USCF teams?;
- (2) will the handicap system be continued in any form in the 1969-70 League?;
- (3) what will be the number of boards on a team?; (4) will teams be grouped in smaller sections so as to reduce the amount of travel involved.

Once again, all groups entering a team should have a representative present or should tell the CCCA Secretary in advance of the meeting.

NEWS

CCCA Adult and Junior Championship Astounding Success

A record 71 players participated in the Central California Chess Association's Adult and Junior Championship, Incorporating Berth Competition for the California State Championship, held 19-20 July, at the Willow Pass Park Community Center, Concord. Enduring one of the hottest weekends of the year and the competing attractions of the Apollo XI Moonshot, three Experts and eight A's competed for the CCCA's Berth in the 1970 California State Championship. This group and seven other players were also competing for \$135.00 in prizes in the Berth-Championship Division. Twenty-five B's, 13 C's, 6 D's, and 1 E competed in the Reserve Division for a total of \$70.00 in cash prizes. Finally, eight juniors competed for three USCF memberships. No tournament this large has been held in the area since December 1966.

Martin E. Morrison, USCF and CSCF Director, and CCCA Secretary and Editor, along with Jerome M. Long, USCF Director and CCCA Chairman, directed the five-round Swiss with surprisingly little difficulty, considering the pandemonium created during rounds three and five caused by the Moonshot. One notable feature in the organization of this tournament was the establishment, according to USCF tournament rules, of a Jury of Appeal from either of the tournament directors'

Editors
Central California
Chess Association
c/o Post Office Box 1622
Oakland, California 94604
Telephone: (415) 582-1973

Scacchic Voice is edited and published bimonthly (with monthly supplementary issues as needed) by Martin E. Morrison and Elwin C. Meyers, Editors, CCCA, in accordance with Article IV, Section iv (f) of the Bylaws of the CCCA, which directs the Editors to "edit and publish the official organ of the CCCA and all business proceedings of the CCCA, to provide a system of communication among the members and affiliates of the CCCA." Every member of the CCCA, i.e., every member of a chess club or organization affiliated to the CCCA, automatically receives a Scacchic Voice subscription mailed to his home gratis.

The CCCA is a nonprofit, democratic organization and an affiliate of the United States Chess Federation. The objects of the CCCA are: "(a) to serve as a regional coordinator of chess activities, clubs, and players; (b) to conduct or sponsor tournaments, leagues, matches, and other forms of chess competition, alone or in conjunction with other chess clubs or organizations; (c) to maintain a system of ratings of the members of the CCCA to supplement those of the USCF; (d) to provide an organ of communication among the members and affiliates of the CCCA, to be published not less than bimonthly; (e) to support the affiliates of the CCCA in every feasible way; (f) to promote the game of chess and the USCF" (Article II, Section i, of the Bylaws of the CCCA). Any Central California chess club or organization supporting these objects is invited to apply for affiliation to the CCCA, with benefits for its members which include a Scacchic Voice subscription, a USCF-CCCA rating, discounts on chess books, equipment, and USCF memberships, and full privileges of participation and voting at CCCA business meetings.

NONMEMBER SUBSCRIPTIONS: \$2.00 per annum.

ADVERTISEMENTS: \$5.00 per eighth page per issue. \$20.00 per insert per issue. (This cost is one cent cheaper per piece for mailing tournament circulars, etc., than postage costs alone.) Classified advertisements: 5¢ per word per issue on any subject.

The opinions expressed in the editorials and by contributors are those of Scacchic Voice's Editors or those of the respective contributors. They do not necessarily constitute an official policy of the CCCA or any of its affiliates. All unsigned articles were written by the Editors.

Material submitted (including photographs) by readers is encouraged and becomes the property of the Editors. Each CCCA affiliate is responsible for sending its own news material to the Editors. To be assured of consideration for publication, news and tournament data should be received at the above address thirty days preceding the month of issuance. Other material (including columns) should be received at the above address sixty days preceding the month of issuance. Material should be typewritten, following the style used in this magazine.

Comments from readers on any feature of this magazine will be appreciated and will be answered. Letters for publication in the "Letters to the Editors" column should be marked "For Publication." Correspondence to the Editors should be sent to the above address; that to any other member of the staff, to that member, in care of the Editors.

Material published in this magazine may be used by other publications if credit is given to Scacchic Voice (including its Editors and address) and if the Editors are sent a copy of the issue containing the material.

CCCA OFFICERS

CHAIRMAN	JEROME M. LONG
2159 Mt. Diablo Street, Concord 94520	689-4970
SECRETARY	MARTIN E. MORRISON
c/o P. O. Box 1622, Oakland 94604	582-1973
TREASURER	LEONARD F. TROTTER
5315 MacDonald Avenue, El Cerrito 94530	233-1595
LEAGUE DIRECTORS	FRANK V. LEFFMAN
3548 Lincoln Avenue, Oakland 94602	533-3166
27858 Tampa Avenue, Hayward 94544	RICHARD R. SHORMAN
RATING ADMINISTRATOR	782-5029
23716 Lynn Street, Hayward 94541	EVERETT MC NALLY
EDITORS	783-8763
c/o P. O. Box 1622, Oakland 94604	MARTIN E. MORRISON
	582-1973
	ELWIN C. MEYERS
c/o P. O. Box 1622, Oakland 94604	
PUBLICITY DIRECTORS	RICHARD D. SHORMAN

811 Brown Street, Martinez 94553

ELLIS PLASTRIK
228-1796

Assistant Publicity Directors: Alameda Co.—Stephen Nelson (Alameda Ar.), Raymond Ausmus, Ernest M. Bartholomew, Jerome Friedman (Hayward Ar.), Harold Barnett, Wesley A. Nelson (Livermore Ar.), Hans Poschmann (Newark Ar.), Theodore E. Anderson, Richard Lee, Frank V. Leffman (Oakland Ar.); Contra Costa Co.—Charles Vail (Concord Ar.), Rudy R. Quintero (Martinez Ar.), Duncan D. Campbell (Orinda Ar.), Peter M. Brown, Jr. (Richmond Ar.), Saleh Mujahed (Walnut Creek Ar.); Marin Co.—Jack D. Oetli; Monterey Co.—William Kennedy; San Francisco Co.—William M. Dickerson; San Joaquin Co.—Ed D. Uhm; Santa Clara Co.—Richard G. Gordon; Tulare Co.—Chris A. Fotias; Yolo Co.—Sergius Von Oettingen. Boys' Club Liaison: Robert A. Alvillar. USCF Directors: Jerome M. Long, Martin E. Morrison, Frank M. Olvera, Sr., Robert L. Oylar, Manuel Rivera. CSCF Director: Martin E. Morrison.

Members should feel free to contact their officers regarding any aspect of chess business. They will be happy to hear and to work on your ideas.

CCCA AFFILIATE DIRECTORY
(Current number of CCCA affiliates: 21)

ALAMEDA CHESS CLUB: Mon., 7:00-11:30 p.m.; McKinley Park Rec. Cen., Walnut St. and Buena Vista Ave., Alameda.

BECHTEL CHESS CLUB: Only for employees of the Bechtel Corporation, San Francisco.

BERKELEY YMCA CHESS CLUB: Wed., 7:00 p.m.; Palm Rm., Berkeley Cen. YMCA, 2001 Allston Wy., Berkeley.

COLLEGE OF THE SEQUOIAS CHESS CLUB: Tues., 12:00 m.-1:00 p.m.; Rm. 338, Col. of the Sequoias, Visalia.

CONCORD CHESS CLUB: Fri., 7:00-11:30 p.m.; Salvio St. Rec. Cen., 2974 Salvio St., Concord.

DVI CHESS INTEREST GROUP: Only for inmates of the Deuel Vocational Institution, Tracy.

FREMONT CHESS CLUB: Thurs., 7:00-10:00 p.m.; Centerville Jr. High School, 37720 Fremont Blvd., Fremont.

HAYWARD CHESS CLUB: Mon. and Fri., 8:00-12:00 p.m.; Hayward Art and Science Cen., 2058 "D" St., Hayward.

LIVERMORE CHESS CLUB: 1st and 3rd Fri., 7:30-11:30 p.m.; Old Lib., Carnegie Bldg., Fourth and "J" Sts., Livermore.

MARTINEZ CHESS CLUB: Mon., 7:30 p.m.; 1111 Ferry St., Martinez.

MONTÉREY PENINSULA CHESS CLUB: Thurs. evenings; Casa Alvarado Chess Cen., 494 Alvarado St., Monterey.*

NEWARK CHESS CLUB: Tues., 7:00-10:30 p.m.; Newark Community Cen., 35501 Cedar Blvd., Newark.

OAKLAND CHESS CLUB: Fri., 7:00-11:30 p.m.; Multipurpose Rm., Lincoln Elem. School, 225 Eleventh St., Oakland.

ORINDA CHESS CLUB: Thurs., 7:30 p.m.; Orinda Community Church, 10 Irwin Wy., Orinda Village, Orinda.

PIEDMONT HILLS HIGH SCHOOL CHESS CLUB: Mon.-Fri., 2:30-4:00 p.m.; Rm. E-14, Piedmont Hills High School, 1377 Piedmont Rd., San Jose.

RICHMOND CHESS CLUB: Fri., 7:00 p.m., except the 1st Thurs. instead of the 1st Fri.; Our Lady of Mercy Church, 301 W. Richmond Ave., Pt. Richmond.

SAN QUENTIN CHESS CLUB: Only for inmates of the California State Prison, San Quentin.

SANTA ROSA JUNIOR COLLEGE CHESS CLUB: Fri., 7:00-10:00 p.m.; Santa Rosa Jr. College, 1501 Mendocino Ave., Santa Rosa (to be formally affiliated 12 September).

UC DAVIS CHESS CLUB: Mon., 7:00-11:00 p.m.; Games Rm., Memorial Union, University of California, Davis.

VISALIA CHESS CLUB: Fri., 7:30 p.m.; Rec. Park Bldg., 345 No. Jacob St., Visalia.

WALNUT CREEK CHESS CLUB: Tues., 7:00 p.m.; Sen. Citizens Hospitality House, 1385 Civic Dr., Walnut Creek.

*Temporarily suspended from active affiliation, "since it is in the process of reorganizing its financial and constitutional structure and is therefore unable to pay its assessments for a time."

----- (paid advertisement) -----

Chess clocks
Chess sets
Chessboards
Chess pins

Chess Clocks - Sets - Books
Please write for free catalog

I. Rattmann
2 Hamburg 74
Postfach 905
Germany



Chess books
Chess magazines
Postpaid
Personal checks OK



(Continued from page 2.)

David L. Amkraut, of Palo Alto, with his clear 4½-1 score, placed first in the Berth-Championship Division, to capture CCCA's Berth in the State Championship (one of ten semi-finalists). His winnings also include his \$50.00 entry fee for the Championship competition, and a large trophy.

CCCA Adult Champion is Zaid Baroudi, of San Francisco; Runner-up Adult Champion is Philip D. Smith, of Fresno. Both netted \$27.50. First A was Stephen Kornher, of Rohnert Park (\$15.00).

Standings in the B Class were: 1st, Rod L. Bobo, of Fresno (\$20.00); 2nd, James B. Shearer, of Livermore (\$5.00); 3rd, David Betanco, of Sunnyvale (\$5.00); 4th, Donald Clapp, of Lafayette (\$5.00).

Standings in the C Class were: 1st, Walter Stuart, of Fresno (\$20.00); 2nd, Richard G. Gordon, of San Jose (\$10.00); 3rd, Edward Silva, of Castro Valley (\$1.25); 4th, David Smith, of Hayward (\$1.25); 5th, David Azevedo, of Concord (\$1.25); 6th, Elvin C. Meyers, of Oakland (\$1.25); 7th, Myron A. Johnson, of Oakland (declined prize).

CCCA Junior Champion Aged 15-16 is Dennis Myers, of San Jose. CCCA Junior Champion Aged 14 or Under is Kevin Fong, of San Francisco; Runner-up Junior Champion Aged 14 or Under is Matthew Krueger, of San Jose. All won a one year's USCF membership.

Complete, official rankings, for each of the divisions follows.

Berth-Championship Division			
1 David L. Amkraut*	4½	7 Michael Morris*	2
2 Zaid Baroudi*	4	8 Guillermo Rey	1½
3 Philip D. Smith*	4	9 James Montgomery	1½
4 Gary C. Pickler*	3½	10 Gary E. Wilson	1
5 Stephen Kornher*	3½	11 Raymond J. Cuneo*	1
6 Marty Appleberry	3	12 Robert A. Mitchell*	½
Reserve Division			
1 Rod L. Bobo	5	16 David Azevedo	2
2 James B. Shearer	4	17 Duncan D. Campbell	2
3 David Betanco	4	18 Elvin C. Meyers	2
4 Donald Clapp	4	19 Saleh Mujahed	2
5 Walter Stuart	4	20 Myron A. Johnson	2
6 Henry Miller	3½	21 Harold Barnett	1½
7 Robert L. Clipson	3½	22 Edward S. Yeung	1½
8 Dr. Robert Blauner	3½	23 Frederick J. Ulrich	1
9 Hans Poschmann	3½	24 David W. Harker	1
10 Richard G. Gordon	3½	25 Aki Gullmes	1
11 Edward Silva	3	26 Craig Barnes	1
12 Frank V. Leffman	3	27 Michael Miller	1
13 David Smith	3	28 Richard J. Provost	1
14 George Roust	3	29 Robert Fitzsimons	½
15 Louis J. Mancini	3	30 Robert Weinberg	0
Junior Division			
1 Kevin Fong	6	-1 4 Dennis Myers	3½-3½ 1 -6
2 Matthew Krueger	6	-1 5 John Fichtenkort	3 -4 8 William Noble 0 -7
3 Terry Garnett	5½-1½	6 Donald Gordon	2 -5

Scacchic Voice and Chess Life Again Top Publicity List

A questionnaire was turned in by practically all the entrants to guide the CCCA in planning future tournaments and to ascertain the players' desires. The questionnaire revealed that: (1) Chess Life, USCF's organ, and Scacchic Voice, CCCA's organ, were the most important sources of publicity for the players, followed respectively by a loose tournament circular, Chess Review, word of mouth, the California Chess Reporter, CSCF's organ, and a chess column by Richard R. Shorman, CCCA Publicity Director; (2) players preferred tournaments with low entry fees and small prizes over tournaments with high entry fees and big prizes more than 2 to 1; (3) over half the players were USCF members, about one quarter were CCCA or CFNC members, about one tenth were CSCF members; (4) an overwhelming number approved of the tournament site.

*

Pickler Takes 1969 Davis Championship

By SERGIUS VON OETTINGEN

CCCA Assistant Publicity Director, Yolo County

In the recently completed Davis Championship for 1969, Gary C. Pickler was awarded champion title for his victory in the tournament with the fine final score of 4½-1½ points. His victory was not unexpected, as he also won two other Davis competitions before this one.

Mr. Pickler, 20, is a junior at the University of California at Davis and a member of the CCCA-affiliated UC Davis Chess Club. He started to play chess a few



years ago in his native Danville. This year, besides his success in Davis tournaments, he won the Intercollegiate Annual in Santa Barbara, scoring $4\frac{1}{2}$ - $\frac{1}{2}$, and placed fourth in the strong CCCA Adult and Junior Championship, scoring $3\frac{1}{2}$ - $1\frac{1}{2}$, just one point short of becoming a semi-finalist in the 1970 California State Championship. For these performances he gained enough rating points to become a nationally rated chess expert (2069). His future in chess is very promising.

The complete results of the Davis Championship (18th Davis Rated Tournament) for 1969 are: Championship Section—1 Gary C. Pickler, 2 Stephen H. Sosnick, 3 Ali Estilai, 4 Mohamed El Sayed; Section B—1 Dr. Richard O. Hansen, 2 Gene F. Lee, 3 David L. Olmsted, 4 David Jacobson; Section C—1 Frank J. Garosi, 2 Scott I. Rubenstein, 3 Lewis L. Balics, 4 Michael V. Langhans, 5 Fred W. Leffingwell, 6 Jon M. Fennell, 7 Emilio Restrepo.

The 19th Davis Rated Tournament (Summer 1969) has begun play under the direction of Sergius Von Oettingen, assisted by Gary C. Pickler. First prize is \$5.00; the runner-up prize is \$4.00, and several other cash prizes are offered. The 20th Annual DRT will begin on 29 September at 6:30 p.m. in the Games Room, Memorial Union, University of California, Davis, the club's regular meeting place.

Five CCCA Members Named USCF Directors

CCCA Chairman Jerome M. Long and CCCA Secretary and Editor Martin E. Morrison head a list of five CCCA members named USCF Directors by USCF President Marshall Rohland. Such an honor is accorded "in recognition of your . . . efforts to promote chess." Three other CCCA members have been accorded this honor, all from the CCCA affiliate Concord Chess Club; they are: Frank M. Olvera, Sr., Robert L. Oylar, and Manuel Rivera.

These five are part of the thirty-six Directors allotted to California. The number has increased over the past year or two because of the phenomenal USCF growth in California. USCF members should feel free to discuss any ideas or problems with their USCF Directors, who will be glad to assist them in any way possible.

Deuel Institution Chess Program Thrives

By ED D. ULM

CCCA Assistant Publicity Director, San Joaquin County
Mr. Ed D. Ulm, CCCA Assistant Publicity Director for San Joaquin County, is the sponsor of the Deuel Vocational Institution Chess Interest Group at Tracy. An example of a dedicated penal worker and chess promoter, he recently has done up a fine newsletter describing the activities of the DVI Chess Interest Group and has circulated it to several of his fellow CCCA officials. The Group seems to be thriving, with three teams entered in CCCA's Summer League. Two of their teams remain undefeated after two rounds, so the caliber of play at DVI is clearly high.

Hayward CC Reduces Dues, Elects Officers, Halves USCF Dues

By MARTIN E. MORRISON

Scacchic Voice Editor

On Monday, 4 August, this writer was present at the Hayward Chess Club's regular post-Festival business meeting as a reporter for this magazine and as an interested representative of the CCCA. The hour-and-ten-minute meeting was chaired competently and in a business-like manner by Raymond L. Wheeler, long-time Hayward Chess Club member.

After reports by Eric Salo, club secretary, Jerome Friedman, club treasurer, and Raymond Ausmus, Festival Director, the club took the following action: (1) unanimously elected Mr. Wheeler Business Meeting Chairman; (2) after considering various alternatives, on the motion of A. P. Shepperson reduced dues to \$4 for adults and \$2 for students biannually, and voted that members must display their membership cards before playing, one- or two-time visitors being excepted; (3) unanimously elected Richard R. Shorman (CCCA Publicity Director) as President, Eric Salo as Secretary, Jerome Friedman (CCCA Assistant Publicity Director for the Hayward area) as Treasurer, Everett McNally (CCCA Rating Administrator) as Tournament Director, Raymond Ausmus (CCCA Assistant Publicity Director for the Hayward area) as Tournament Director for Rapid Transit Tournaments, and left the appointment of team captains to the President; (4) voted unanimously that if a paid-up Hayward Chess Club for a minimum of one year wished to become a member of the United States Chess Federation, the club pay one-half of his USCF membership dues in addition to

the 20% reduction offered by the CCCA since the Hayward Chess Club is an affiliate of the CCCA.

The club will hold its next business meeting upon the call of the Secretary.

*

Hayward Chess Club and Raymond Ausmus Present Largest Festival in Years



The Weekes Community Center in Hayward on Sunday, 22 June, saw almost sixty chess players, lured by the chess columns of Richard R. Shorman and Ellis Plastrik, CCCA Publicity Directors, and Scaechic Voice, get together for an afternoon of chess and family fun known as the Seventh Annual Scholarship Chess Festival. Picnic and play areas were available for the family. Mr. Shorman gave a lecture on steps toward improving chess play. Problem solving, simultaneous, and rapid transit events all followed the more serious play of four-man, Round Robin sections. Almost \$100.00 was given away as door prizes alone, along with large trophies for section winners.

The Hayward Chess Club has held the festival for seven consecutive years in co-sponsorship with the Hayward Area Recreation Department and the Hayward Chamber of Commerce.

The admirable continuity of this festival is a record in California.

For all its life it has been managed--and managed admirably--by Raymond Ausmus, Tournament Director of the Hayward Chess Club, who is a Hayward school teacher active in civic affairs, known to all chess players as a fine gentleman of chess. Mr. Ausmus takes a "fun" approach to chess and compares the annual festival to similar events held in England. At the instigation of Mr. Ausmus, the festival, besides providing fun for chess players, is designed to raise money for a \$100.00 scholarship, which is awarded to a chess-playing youth of outstanding academic qualifications.

*

Concord Hosts Other Northern CCCA Affiliates

By PAUL WESTERLINE

Secretary-Treasurer, Concord Chess Club

On 6 June, the Concord Chess Club hosted its fellow northern clubs, CCCA affiliates Walnut Creek Chess Club and Martinez Chess Club. The Friday night, Concord Chess Club's regular meeting night, saw match games, rapid transit chess, and various other chess activities take place between the three clubs.

The event was so successful that the get-togethers will rotate monthly between the three clubs.

Our thanks to Mr. Westerline for planning this event, which already has done much to create enthusiasm and mutual activity among the three clubs.--EDS.]

CCCA SUMMER LEAGUE INTERIM REPORT

By JEROME M. LONG

Summer League Administrator

The following are the official results of the CCCA Summer League (USCF) up to 15 August.

	Liv.	<u>Eastern Division</u>					M-WC
		DVI-C	Fre.	Conc.	DVI-B		
Livermore	1	X	1	1	-	1	4 -0
DVI-C	2	0	X	-	1	-	2 -1
Fremont	3	0	-	X	0	1	2 -2
Concord	4-5	-	0	1	X	0	1 -2
DVI-B	4-5	0	-	0	1	X	1 -2
Martinez-Walnut Creek	6	0	-	0	-	X	0 -2

	DVI-A	<u>Western Division</u>				Orin.	
		Oak-A	Oak-B	Bech.	Hay.		
DVI-A	1	X	-	-	1	2 -0	
Oakland-A	2-3	-	X	-	-	1 -0	
Oakland-B	2-3	-	-	X	-	1 -0	
Bechtel	4	0	-	-	X	1 -2	
Hayward	5	-	-	-	0	X	0 -1
Orinda	6	0	-	0	-	X	0 -2

The last scheduled game in the league is 18 August. All reports must be turned in by 25 August. Captains: if any of the games listed above as unplayed (-) had been played by 15 August, be sure to contact the League Administrator, as the opposing captain may not have turned in the result. Announcement of the winning team and awarding of the trophy will take place at the 12 September Team Captains'-CCCA meeting.

CHESS PUZZLE

By CRAIG BARNES
Oakland

See how many chess terms (given below) you can find hidden in this puzzle horizontally, vertically, diagonally, forwards, and backwards. There are sixteen dud letters (entered as "x"). It's trickier than you think!

Elwin C. Meyers, Scacchic Voice Editor has augmented Mr. Barnes's original version for publication here. A prize will be offered to any readers who send in the correct solution. Send solutions to the Editors, whose address is on page 3 supra.--EDS.]

```

P A S S E D P A W N R U E M A G E L D D I M L A W S G W
R E Y K S S A P S I U S D O U B L E D P A W N S E M N I
O M R E T N E C X P Y C A C C C I K C O L C P D P O A N
M E K P A R T O P E N F I L E X F E T E I S I R K T W E
O N T S E L O S S P X X P A W N G N I K U X E A C H Z N
T A D C X T I R M A G A T T A C K P E B R W C O E E G D
I L E A C X U X X N M A T C H D S A I X X O E B H R U G
O E F C H S L A X K E M A G O E E S A C R I F I C E Z A
N K E C A P A B L A N C A U V V H S T S A L L O W D Y M
X H N H N I S R S C H X R O A O X A E L T S E T A M H E
X I S I G L K I A E H L M N P X X N M B X A T X R A P S
X N E C E S E S C X E E S K C I R T P D X X L L D T R N
R E W E K S R K K C E H C D E R E V O C S I D E I E O E
L A R S E N M N H K A N E K X F O O L S M A F E M N M E
S E R E K A E E S S I W S O T T E H C N A I F F L A G U
G N A W T P C G N I N E P O A C E R S K N I G H T X T Q
F I D E O K X C A I S S A R C O M B I N A T I O N C H E

```

Words used: passed pawn, Alekhine, attack, bishop, castling, knight, pawn, king, queen, rook, fianchetto, en passant, Caissa, zugzwang, piece, defense, Capablanca, Lasker, stalemate, checkmate, fool's mate, skewer, check, double check, discovered check, doubled pawns, end games, middle game, opening, gambit, combination, promotion, perpetual check, exchange, sacrifice, pin, rank, open file, file, fork, scacchic, Keres, USCF, Spassky, clock, flag, draw, loss, win, sac, tie, mate, moves, FIDE, slips, Wang, trick, laws, game, Acers, trap, Kane, open, Swiss, match, Euwe, Larsen, Evans, board, men, Morphy, Ruy, tempo, allow, risk, e. p., ch, kt, dbl.

OFFICIAL NOTICE: EMBLEM AND MOTTO

At the 11 July meeting of the CCCA, a committee consisting of Elwin C. Meyers, chairman, Jerome Friedman, and Martin E. Morrison was formed "for the purpose of drawing up an emblem and motto for the CCCA." The committee set promptly to work, and with the expert skill of Mr. Friedman, a former draftsman, have, under the "full power" of decision granted them by the CCCA, determined that the CCCA's emblem and motto shall be those printed on the first page of this issue of Scacchic Voice. In the course of the committee's deliberations, Mr. Friedman submitted a number of sketches for consideration, of which the committee on 1 August unanimously adopted the one herewith depicted as CCCA's official emblem. The motto appearing thereon was also devised by Mr. Friedman.

Explanation of emblem and motto. The emblem is in the form of the standard heraldic shield, the upper left portion of which depicts the figure of a knight, part of the emblem of the Fédération Internationale des Échecs (FIDE, or World Chess Federation), upon a chessboard, part of the emblem of the United States Chess Federation, official unit of the FIDE in this country, and to which the Central California Chess Association is affiliated. The upper right portion of the emblem depicts vertically the initialism of the Central California Chess Association (CCCA). The bottom portion of the emblem depicts the CCCA's new motto, frui mini scacchis (Latin for "enjoy chess").

The committee's thanks are extended to Mr. Friedman who, alone, devised the emblem and motto and their execution.

CCCA THANKS

CCCA's thanks are extended to Gordon S. Barrett, Editor of Terrachess (Southern California's bimonthly newbulletin, issued in affiliation with the Southern California Chess League), and W. Guthrie McClain, Editor of The California Chess Reporter (organ of the California State Chess Federation) for advertizing the CCCA's 19-20 July tournament in their respective periodicals.

BUSINESS PROCEEDINGS OF THE CCCA
 By MARTIN E. MORRISON
 CCCA Secretary

A regular meeting of the Central California Chess Association was held on Friday, 11 July 1969, in the Faculty Dining Room of Lincoln Elementary School, 225 Eleventh Street, Oakland (the Oakland Chess Club's quarters). The meeting was called to order promptly at 8:00 p.m. by the Secretary, Martin E. Morrison, the Chairman, Jerome M. Long, being absent. It was adopted by general consent that the Secretary serve as chairman *pro tempore*.

The total attendance for the meeting was as follows: Hans Poschmann (Fremont Chess Club); Michael Albertson, Fred Crosby, Jerome Friedman, Kerry Lawless, Richard R. Shorman, Sam Usher (Hayward Chess Club); Wesley A. Nelson (Livermore Chess Club); Frank V. Leffman, Elwin C. Meyers, Martin E. Morrison (Oakland Chess Club); Leonard F. Trottier (Richmond Chess Club)--five of twenty affiliates, twelve members.

It was moved by Mr. Trottier, seconded, and adopted by general consent THAT THE MINUTES OF THE PREVIOUS MEETING (11 APRIL) BE APPROVED AS PUBLISHED IN THE OFFICIAL CCCA ORGAN, WITH THE FOLLOWING CORRECTIONS: (1) TO SUBSTITUTE IN THE ATTENDANCE FOR "/NAME NOT RECORDED/;" "BURTON SEYMOUR"; (2) TO STRIKE OUT FROM THE RECEIPTS PORTION OF THE TREASURER'S REPORT "\$52.85" AND INSERT "\$54.55," TO STRIKE OUT "176.90" AND INSERT "147.70," TO INSERT "CONCORD TOURNAMENT ADVERTISE-
 MENT . . . 20.00" AND "CONCORD TOURNAMENT ASSESSMENT . . . 7.50"; (3) IN MR. TROTTIER'S MOTION ON ADJOURNMENT, TO STRIKE OUT "MUSIC ROOM" AND INSERT "FACULTY DINING ROOM."

It was moved by Mr. Meyers, seconded, and adopted unanimously THAT THE BECHTEL CHESS CLUB, UPON THE APPLICATION OF WILLIAM M. DICKERSON, CHAIRMAN, BE AFFILIATED TO THE CCCA.

The Secretary, Mr. Morrison, reported on the California State Chess Federation's important recognition of the CCCA by granting the CCCA three USCF Directorships, a CSCF Directorship, and the administration of a berth to the California State Championship in 1970.

The Treasurer, Mr. Trottier, gave the following
 REPORT OF THE TREASURER OF THE CCCA
 FOR THE PERIOD 7 APRIL TO 11 JULY 1969

<u>Receipts</u>	
Balance on hand 7 April 1969	\$184.55
Bimonthly assessment of affiliates*.....	\$129.15
USCF memberships	156.00
Clocks sold	107.45
Walnut Creek tournament advertizement	20.00
	<u>412.60</u>
	<u>\$579.15</u>
<u>Disbursements</u>	
League postage and trophies	\$ 71.24
Summer League rating fees	2.20
Tournament cards and charts	4.70
Secretary's expenses	5.00
Treasurer's postage	2.00
USCF memberships	156.00
Clock loan, interest, postage and insurance	64.22
Editors' expenses	160.00
	<u>\$465.36</u>
Balance on hand 11 July 1969	131.79
Total	<u>\$579.15</u>

*The Oakland Chess Club deducted \$2.25 from their assessment as one-half the cost of the post-office box shared with that club for the quarter July-September, as per CCCA resolution of 11 October 1968. Total CCCA membership at 5 June assessment period: 303.

Mr. Morrison, reporting for League Administrator Jerome M. Long, stated that (1) Mr. Long, under the authority given him by the CCCA, was adding to Rule 3C of the CCCA Summer League Rules after "numerical rating," "up to a maximum of 1½ points"; (2) in the CCCA's 1968-9 League just ended, the captains of the Livermore and Hayward teams (divisional winners) agreed that rather than play a third playoff (the first two having ended in draws), they would be co-champions and draw pawns for the larger of the two trophies /This report corrects the version in the August-September 1969 issue of the official organ/; (3) the purchase of the trophies for the CCCA's 1968-9 League, referred to the League Director, had been completed; (4) team captains should be more considerate in notifying the DVI Chess Interest Group team captain when they are not able to make a match, and that playing one, two, or three boards is better than forfeiting completely.

Mr. Trottier, Chairman of the standing Clock Committee, reported that over the period 7 April to 11 July 1969, clock sales totaled \$107.45, and that loan, interest, and postage and insurance cost \$64.22, for a total profit for the period of \$42.23.

Mr. Morrison, giving the final report of the ad hoc Sun Valley Exhibition Committee, stated that the Sun Valley Shopping Center desired only a thirty-minute program, with which it was deemed by the committee not worthwhile to proceed.

Mr. Meyers, submitting a partial report for the ad hoc CCCA Adult and Junior Championship Tournament Committee, reported good progress in preparation and moved for the committee the adoption of the following motion, which was seconded and adopted unanimously: THAT THE WINNER OF THE BERTH DIVISION OF THE CCCA'S ADULT AND JUNIOR CHAMPIONSHIP TOURNAMENT (19-20 JULY) BECOME THE WINNER OF THE BERTH TO THE STATE CHAMPIONSHIP ALLOTTED TO THE CCCA BY THE CALIFORNIA STATE CHESS FEDERATION.

New business.

It was moved by Mr. Meyers, seconded, and adopted by general consent that there be nominations from the floor for the office of League Director, which was vacant, and that election be by ballot. Mr. Meyers also invoked Article V, Section iv, of the CCCA Bylaws to order a vote by affiliates.

Nominated were: Mr. Leffman, Messrs. Leffman and Long (together), and Messrs. Leffman and Shorman (together).

It was moved by Mr. Leffman, seconded, and adopted by general consent that the meeting recess for counting of ballots, to reconvene at the call of the chair. The chairman declared the meeting recessed at 9:10 p.m., called it to order again at 9:18 p.m., and announced the result of the balloting:

Messrs. Leffman and Shorman (together) received	...6 1/3
Mr. Leffman received3
Mr. Shorman received1 2/3
Messrs. Leffman and Long (together) received1
Necessary for election6 1/3

THE CHAIRMAN DECLARED MESSRS. LEFFMAN AND SHORMAN (TOGETHER) ELECTED AS LEAGUE DIRECTOR.

It was moved by Mr. Poshmann, seconded, and adopted unanimously THAT THE LEAGUE DIRECTOR BE DISCHARGED FROM REPORTING ON THE PERPETUAL CUP TOURNAMENT, AND THAT MR. POSCHMANN PRESENT SUITABLE RESOLUTIONS AT THE JANUARY ANNUAL MEETING.

Mr. Friedman tendered his resignation as a member of the standing Clock Committee because of press of business. It was moved by Mr. Friedman, seconded, and adopted by general consent THAT MR. FRIEDMAN'S RESIGNATION BE ACCEPTED, WITH THANKS FOR HIS PAST SERVICES.

It was moved by Mr. Meyers, seconded, and adopted unanimously THAT THE RESOLUTION SETTING UP THE CLOCK COMMITTEE BE AMENDED BY STRIKING OUT "AND MR. JERRY FRIEDMAN" AND INSERTING "THE CCCA SECRETARY, AND MR. FRED CROSBY."

Mr. L. J. Peterson, through the CCCA Secretary, tendered his resignation as Assistant Publicity Director because of his moving from the area. It was moved by Mr. Shorman, seconded, and adopted by general consent THAT MR. PETERSON'S RESIGNATION BE ACCEPTED, WITH THANKS FOR HIS PAST SERVICES.

It was moved by Mr. Shorman, seconded, and adopted unanimously THAT THE FOLLOWING BE APPOINTED ASSISTANT PUBLICITY DIRECTORS FOR THEIR RESPECTIVE AREAS: HAROLD BARNETT (ALAMEDA CO., LIVERMORE AR.), DUNCAN D. CAMPBELL (CONTRA COSTA CO., ORINDA AR.), JERRY FRIEDMAN (ALAMEDA CO., HAYWARD AR.), RAYMOND AUSMUS (ALAMEDA CO., HAYWARD AR.), FRANK V. LEFFMAN (ALAMEDA CO., OAKLAND AR.), WILLIAM M. DICKERSON (SAN FRANCISCO CO.), ED D. ULM (SAN JOAQUIN CO.).

It was moved by Mr. Meyers (for Mr. Plastrik, who was absent), seconded, and adopted unanimously THAT AN AD HOC BANQUET COMMITTEE BE ESTABLISHED WITH FULL POWER TO PREPARE FOR AND CONDUCT A CCCA BANQUET DURING THE WEEK OF 14 SEPTEMBER; THAT AT THE BANQUET THE TROPHY FOR THE WINNER OF THE CCCA SUMMER LEAGUE BE PRESENTED; THAT THERE BE ENTERTAINING CHESS ACTIVITIES (LECTURE, SIMULTANEOUS, ANALYSIS, OR RAPID TRANSIT TOURNAMENT); THAT THERE BE NO CHARGE BUT FOR THE MEAL, AND THE COMMITTEE BE ALLOWED ONLY MINOR EXPENDITURES FROM THE CCCA GENERAL FUND; AND THAT THE COMMITTEE CONSIST OF: MESSRS. PLASTRIK, MEYERS, CROSBY, MORRISON, AND MRS. PETERSON.

It was moved by Mr. Trottier, seconded, and adopted by general consent THAT THE TREASURER, SECRETARY, LEAGUE DIRECTOR, AND EDITOR BE ALLOWED MINOR EXPENSES FROM THE CCCA GENERAL FUND.

It was moved by Mr. Meyers, seconded, and adopted by general consent THAT THE CCCA PAY MR. JERRY FRIEDMAN \$2.50 FOR MAKING A SIGN FOR THE CCCA.

It was moved by Mr. Nelson, seconded, and adopted unanimously THAT THE CCCA HOLD A SPECIAL GENERAL MEMBERSHIP MEETING ON 12 SEPTEMBER WITH THE SPECIAL ORDER OF BUSINESS BEING THE ESTABLISHMENT OF RULES FOR THE 1969-70 CCCA LEAGUE, THE MEETING TO BE ADJOURNED TO ANOTHER DAY, IF NECESSARY; THAT THE CCCA REGULAR GENERAL MEMBERSHIP MEETING IN OCTOBER, THEREFORE, BE FOREGONE; AND THAT THE CCCA'S REGULAR (ANNUAL) MEETING IN JANUARY BE HELD ON 9 JANUARY, BOTH MEETINGS TO BE HELD AT 7:30 P.M. IN THE FACULTY DINING ROOM OF LINCOLN ELEMENTARY SCHOOL, 225 ELEVENTH STREET, OAKLAND (THE OAKLAND CHESS CLUB'S QUARTERS).

It was moved by Mr. Meyers, seconded, and adopted unanimously THAT THE CCCA BYLAWS BE AMENDED BY STRIKING OUT OF ARTICLE V, SECTION iii "OF AT LEAST ONE MEMBER

OF THE CCCA FROM 25% OF THE AFFILIATES OF THE CCCA . . . GREATER" AND INSERTING "ONE MEMBER OF THE CCCA FROM AT LEAST FOUR OF THE AFFILIATES OF THE CCCA."

It was moved by Mr. Meyers, seconded, and adopted unanimously THAT AN AD HOC COMMITTEE WITH FULL POWER, CONSISTING OF MESSRS. ELWIN C. MEYERS, JEROME FRIEDMAN, AND MARTIN E. MORRISON BE ESTABLISHED FOR THE PURPOSE OF DRAWING UP AN EMBLEM AND MOTTO FOR THE CCCA."

It was moved by Mr. Meyers and seconded that with the approval of the CSCF, the CCCA qualify a candidate to the California State Championship in the following manner: qualifying points shall be awarded to CSCF members who play in the top-division of USCF-rated weekend tournaments held by CCCA affiliates; the number of qualifying points for each player shall be the number of points he has scored in the tournament, except that for the special summer qualifying tournament, the player's final score shall be multiplied by a factor of three; qualifying points shall be totalled for the period of 1 September-31 August of the year(s) preceding the year of the Championship, the player with the highest total becoming the berth winner; tournament directors of eligible tournaments shall submit the final scores of eligible players to the Rating Administrator and keep a copy for himself; the Rating Administrator shall total points by 31 August, forward the results to the Editors for publication, and notify the winner; notification of the awarding of qualifying points at a tournament and for players' being their CSCF membership cards must appear on the tournament bulletin. It was moved by Mr. Leffman to postpone the motion to the next meeting.

It was moved by Mr. Trottier, seconded, and adopted unanimously THAT IT IS THE SENSE OF THE CCCA THAT CCCA AFFILIATES SHOULD VARY THEIR WEEKEND TOURNAMENTS EQUALLY BETWEEN CLASS AND OPEN TYPES, AND THAT THE AFFILIATE OFFICIALS INVOLVED SHOULD ACT TO ACHIEVE THIS BALANCE.

It was moved by Mr. Trottier, seconded, and adopted unanimously THAT THE CCCA SUGGEST THAT THE EDITORS INCLUDE THE SCORES OF ALL PARTICIPANTS IN CCCA AFFILIATES' USCF WEEKEND TOURNAMENTS IN THE OFFICIAL ORGAN, THAT THE DIRECTORS OF SUCH TOURNAMENTS SUBMIT THESE RESULTS TO THE EDITORS, THAT THE SPONSORS MAIL OUT TO ALL ENTRANTS A FULL CROSSABLE, AND THAT THE EDITORS POLL THEIR READERS ON WHETHER THEY WANT FULL CROSSABLES.

Announcement—Mr. Morrison reported for Mr. Long, CCCA Chairman, that the Concord Chess Club had applied for the use of the CCCA's charter to hold and organize for the CCCA a regional weekend tournament (USCF) on 6-7 September.

It was moved by Mr. Nelso, seconded, and adopted by general consent that the meeting adjourn sine die. The Chairman declared the meeting adjourned sine die at 11:00 p.m.

The next meeting, a special general membership meeting with the special order of business being the establishment of rules for the 1969-70 CCCA League, will be held on 12 September. THIS IS THE "TEAM CAPTAINS' MEETING" FOR THE CCCA LEAGUE. ALL PROSPECTIVE TEAM CAPTAINS ARE URGED TO ATTEND.



UNITED STATES CHESS FEDERATION
PUBLISHERS OF CHESS LIFE

EDITOR MARTIN E. MORRISON:

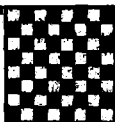
A loud BRAVO for your well thought-out and well written editorial, "Rules, Rules, Rules: Bane or Blessing?"

An even louder BRAVO for making a crusade in a gentlemanly tone of "voice" instead of a tirade, which so many editors (especially of smaller publications) fail to do.

Very truly yours

(MAJOR) ARTHUR C. JOY
Armed Forces Chairman, USCF

GAMES COLUMN
 By RICHARD R. SHORMAN
 Scacchic Voice Games Columnist
 (CCCA Publicity
 and League Director)



White discovers a sharp, unbooked attacking line in the classical King's Gambit that sends Black reeling. Preoccupied with simple survival, Black passes up a brilliant over-the-board refutation, and the theoretical duel ends in a draw. Annotations are by Charles A. Maddigan, member of the USCF and the CCCA affiliate, Oakland Chess Club.

Event: San Bruno Chess Festival, USCF-rated Section

Date: 4 July 1969

White: Robert Martinez, of Hayward

Black: Charles A. Maddigan, of Oakland

Opening: King's Gambit Accepted

1 P-K4	P-K4	11 PxP	Q-N2	21 PxP	PxP
2 P-KB4	PxP	12 P-K6	N-KB3 (e)	22 N-Q5	N-B3
3 N-KB8	P-Q3 (a)	13 PxPch	K-B1 (f)	23 BxP	BxB (k)
4 B-B4	P-KN4 (b)	14 Q-B3 (g)	NxP (h)	24 NxB	R-Q1
5 P-Q4	B-N2	15 QxN	Q-K4	25 R-K1	R-Q7
6 P-KR4	P-KR3	16 N-B3	B-B4	26 R-K2	RxR
7 PxP	PxP	17 QxQ	BxQ	27 KxR	N-N5
8 RxR	BxR	18 K-B1 (i)	B-N3 (j)	28 P-B3 (l)	drawn
9 N-K5 (c)	PxN (d)	19 P-KN3	BxKBP		
10 Q-R5	Q-B3	20 BxB	KxB		

(a): Black plans to eliminate all forward squares for White's KN, so that his eventual ...P-KN4 will be more dangerous.

(b): More consistent is 4...P-KR3 immediately. Now White can play 5 P-KR4, P-N5; 6 N-N5, with a promising game, owing to the weakness of Black's K-side pawns.

(c): Beginning a tricky attack, which should lose against correct play, however.

(d): If 9...N-KR3; 10 Q-R5, provoking 10...PxN; 11 QxN, Q-B3; 12 Q-R7, PxP; 13 BxPch, QxB; 14 QxBch, Q-B1; 15 QxP, and White can draw at least, or 9...BxN; 10 PxR, PxP?; 11 BxPch!, K-K2; 12 QxQch, KxQ; 13 BxN wins, and if 9...B-K3?; 10 BxB, PxB?; 11 Q-R5ch and mates next. In this last line 10...Q-B3; 11 BxPch, K-B1; 12 BxN wins.

(e): Missing the first winning chance. Correct is 12...BxP!; 13 BxB, N-KB3, and now 14 BxPch, K-B1 (not 14...QxB?; 15 QxBch), and the bishop falls,* or 14 Q-R3, PxR; 15 QxPch, Q-K2; 16 Q-B3ch, Q-Q1; 17 Q-K6ch, K-B1; 18 P-K5, Q-Q2!

(f): After 13...K-Q1, White plays 14 QxP!, followed by 15 BxP, with good chances.

(g): Threatening 15 Q-R3ch. If Black replies 14...P-QB4, then 15 Q-Q3, K-K2; 16 P-K5 gets the piece back, but Black holds the position after 14...QN-Q2; 15 P-K5, N-B2; 16 Q-R3ch, P-B4; 17 P-K6, g-K4ch; 18 K-B1, QN-B3, and the pawns can not be saved. White has even less counterplay after 14...KN-Q2 (no P-K5), e.g., 15 Q-R3ch, P-B4; 16 N-B3, Q-Q5; 17 B-N3, Q-N8ch; 18 K-K2, QxPch, and Black's passed pawns win quickly. Unfortunately I found neither of these lines, playing instead the first move I saw that kills White's attack. By returning the piece for a pawn, I am slightly ahead in material and have at least a draw.

(h): So that if 15 Q-R3ch?, N-Q3, and Black is safe.

(i): Perhaps trying for the swindle, 19 P-QN3, BxN?; 20 B-R3ch. This way the knight can not be taken with check.

(j): The best practical chance is 18...BxP, although it should prove insufficient to win, e.g., 19 P-KN3, N-B3; 20 PxP, PxP; 21 N-Q5, P-B6; 22 B-R6ch, B-N2; 23 BxBch, KxB; 24 NxP.

(k): If 23...BxP, 24 R-N1.

(l): Anticipating 28...NxP; 29 K-Q2, P-N4; 30 N-Q3, and Black will have to return his extra material with 30...P-B4, in order to get his knight out, or play 30...P-R4; 31 K-B2, P-N5; 32 K-N3, PxP; 33 PxP, NxP; 34 KxN, which draws.

* (a supplementary note by Robert Martinez): After 15 Q-R3, KxB?; 16 Q-N3ch, K-N3; 17 QxNP, White wins. Best is 15...N-B3!; 16 B-Q5, NxR; 17 PxN; R-K1ch; 18 K-B1, Q-K4, and Black's initiative reaches the danger point. White may have to settle for 16 B-B4, NxP; 17 B-K2, a pawn down in a bad position.

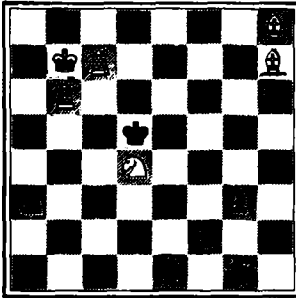
UNIVERSITY OF CALIFORNIA READERS

Scacchic Voice is catalogued in the library system of the University of California at Berkeley. All numbers may be found and checked out from the Periodical Room of the Main Library (Room 290), Section A (alphabetically). The magazine is also catalogued in the Berkley Main Library, Oakland Main Library (Language and Literature Division and Young Adult Division), San Francisco Public Library (Main Branch, Art, Music, and Recreation Room), and the Stanford University Library.

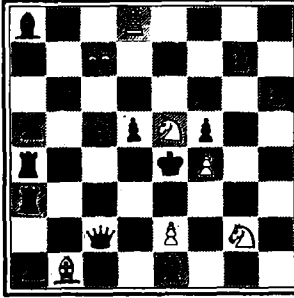
MATING MAZE

By RICHARD LEE

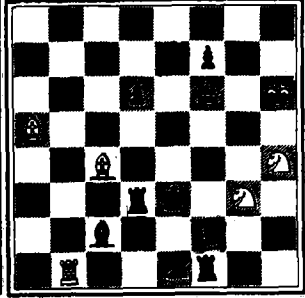
Scacchic Voice Problems Columnist
(CCCA Assistant Publicity Director,
Alameda County, Oakland Area)



No. 57
White mates in two.



No. 58
White mates in two.



No. 59
White mates in two.

Many more of you attempted last issue's problems. We repeat: a try never hurts, and you may win one of our prizes for a set of correct solutions. The winners for the problems appearing in the last issue are: Anthony Mock, of San Jose (Piedmont Hills High School Chess Club), Theron Myers, of San Jose (Piedmont Hills High School Chess Club), and E. B. Nixon, of Union City (Fremont and Newark Chess Clubs). Prizes are in the mail.

SOLUTIONS TO LAST ISSUES PROBLEMS: no. 51, Q-KN4; no. 52, Q-B6; no. 53, N-K2 (nos. 51-53 corrected from last issue); no. 54, N-R3; no. 55, B-R3; no. 56 N-N5.

CHESS IS MY HOBBY

By JAMES B. REYNOLDS

Scacchic Voice Analysis Columnist

With this issue we resume Mr. Reynolds's Analysis Column, which was temporarily interrupted by a death in his family. We are pleased to note that this column is getting national attention, but Mr. Reynolds would like readers to submit their games for analysis, since out of a sense of modesty he dislikes using only his own games. See page three of this issue for how to contact Mr. Reynolds.—EDS.

REVENGE. Remember that game I lost by adjudication to Dan McLeod? I mentioned that I got revenge. The following is one part of it. Please remember that Dan and I were good friends, but we always became bitter enemies over those 64 squares. This one is not the best, it being a 30 move per hour affair, at the Valley of the Moon Chess Festival in Sonoma. Here one tries to put in serious chess thinking on a Sunday afternoon while trying to picnic with one's own family—quite a feat. This game took place on 12 August 1956, about six months after that debatable loss with Dan. Please excuse both of us for bad moves because of the time pressure involved.

White: James B. Reynolds

Black: Dan McLeod

Opening: French Defense

1 P-K4	P-K3	11 O-O	B-N2	21 QxR	N-B4
2 P-Q4	P-Q4	12 B-N5	P-KR3	22 Q-KB4?!	P-B3
3 N-Q2	P-QP4	13 BxN	QxB	23 N-N6	QxQ
4 P-QB3	N-QB3	14 N-K4	Q-K2	24 NxQ	NxP
5 KN-B3	HPxP	15 P-QR3	B-Q3	25 B-N4	P-K4
6 BPxP	PxP	16 NxB	QxN	26 N-K6	NxN?
7 NxP	B-N5ch	17 QR-B1	KR-Q1	27 QxNch	K-B1
8 N-B3	N-B3	18 KR-Q1	QR-B1	28 RxRch	K-K2
9 Q-Q3	O-O	19 Q-K2	N-K2	29 R-QN8	resigns
10 B-K2	P-QN3	20 N-K5	RxR		

As I said, time trouble, as usual, for both of us. Even R-K7ch looks good for the finisher, but nobody had time to think. It was like playing "skittles," yet it was supposed to be a little bit serious. We both tried!

USCF-CCCA RATINGS
 By EVERETT MC NALLY
 CCCA Rating Administrator

The purpose of these ratings, calculated by computer and published bimonthly, is to give every CCCA member a current rating for participation in USCF and CCCA tournaments, leagues, and matches. The ratings are divided into two categories: Adjusted USCF Ratings and Supplementary CCCA Ratings. Adjusted USCF Ratings are given to all those CCCA members who have USCF ratings, and are the last-published official USCF ratings, adjusted to include USCF tournament, league, and match play in Central California since the last publication of the official USCF ratings. Supplementary CCCA Ratings are given only to those CCCA members who do not now have USCF ratings (they may be USCF members, though). For these ratings all available information is used to give a player the fairest initial rating, which is then adjusted on the basis of subsequent tournament, league, and match play between CCCA members. Official USCF ratings, then, are the backbone of this system. It is hoped that in the future CCCA members will all become rated members of the USCF, so that the Supplementary CCCA Ratings will be unnecessary.

The appropriate club officers should send regularly to the Rating Administrator a recent listing of club members' club ratings or an estimation of what their ratings should be. These listings will be used in determining initial Supplementary CCCA Ratings.

For this rating list, official USCF ratings through the June Rating Supplement have been used, and all games of the CCCA's 1968-9 League have been rated. (5 August.)

Expert2000-2199 Class B ...1600-1799 Class D ...1200-1399 Class E ...1999 & below
 Class A ...1800-1999 Class C ...1400-1599

* * *

Adjusted USCF Ratings (64)

Top Ten

S Von Oettingen	2068	R Hammie	1982	A Raymond	1912	R Cuneo	1881
D Forthoffer	2057	M El Sayed	1948	G Bigelow	1905		
W Allen	1994	J Fosaaen	1945	S Tresz	1904		

*

<u>Alameda CC (3)</u>		C Larson	1690	D Jacobson	1617		
A Hall	1565	G Roust	1683	M Langhans	1299		
R Ng	1843	J Shearer	1686	F Leffingwell	1319		
L Petty	1649	<u>Martinez CC (3)</u>		S Von Oettingen	2068		
<u>Bechtel CC (3)</u>		R Swanson	1770	<u>Visalia CC (1)</u>			
W Allen	1994	F Ulrich	1543	C Fotias	1539		
G Bigelow	1905	C Vail	1597	<u>Walnut Creek CC (3)</u>			
A Saguisag	1874	<u>Oakland CC (18)</u>		M McNown	1625		
<u>College of the Se-</u>		T Anderson	1457	S Mujahed	1639		
<u>quoias CC (1)</u>		R Clipson	1745	C Vail	1597		
C Fotias	1539	M Crossland	1742				
<u>Concord CC (11)</u>		R Cuneo	1881				

Supplementary CCCA Ratings (233)

D Clapp	1706	J Dennis	1494	<u>Alameda CC (9)</u>		R Tyler	1656
J Fosaaen	1945	D Forthoffer	2057	H Brown		UNRA D Reich	UNRA
R McCollough	1820	R Hammie	1982	D Freeman		1649 B Savage	UNRA
M McNown	1625	R Hansen	1812	J Gerhardt		1594 J Smith	UNRA
F Olvera, Sr.	1584	R Hough	1854	S Nelson		1735 L Turner	1697
M Rivera, Sr.	1365	L Lane	1263	G Orr		1639 J Virden	UNRA
D Thompson	1773	R Lee	1106	D Schneider		UNRA A Wells	1584
F Ulrich	1543	C Maddigan	1840	O Sobol		1711 <u>DVI Chess Interest</u>	
C Vail	1597	A Ramirez	1724	L Sutton		1488 <u>Group (15)</u>	
J Weiler	1457	J Salna	1859	M Weber		1897 D Bissell	1700
P Westerline	1293	M Sloane	1536	<u>Bechtel CC (2)</u>		J Cain	1900
<u>DVI Chess Interest</u>		S Tresz	1904	T Cahill		UNRA H Chappel	1900
<u>Group (1)</u>		R Turney	1541	W Dickerson		UNRA C Comstock	1900
B Hamilton	1840	G Weber	1817	<u>Concord CC (16)</u>		M Guerra	1500
<u>Fremont CC (1)</u>		<u>Orinda CC (1)</u>		L Anderson		1473 R Harris	1300
H Poshmann	1681	D Campbell	1644	N Doke		UNRA R James	1500
<u>Hayward CC (4)</u>		<u>Richmond CC (2)</u>		J Eliason		1621 L Larson	1700
E Bartholomew	1617	A Raymond	1912	T Garnett		1539 R Larson	1700
G Cohen	1384	L Trottier	1588	G Harkess		1660 T Marrs	1300
L Lopez	1860	<u>UC Davis CC (7)</u>		V Hirsatic		1490 R Martinez	1700
E McNally	1828	M El Sayed	1948	J Long		1798 F Phillips	1900
<u>Livermore CC (4)</u>		F Garosi	1599	M Monaghan		1487 W Romero	1725
H Barnett	1321	R Hansen	1812	C Montcrief		970 L Syphert	1700

J Woldridge	1300	W Taylor	1683	P Dekar	UNRA	***NEWS NOTES***
<u>Fremont CC</u> (18)		A Verheyer	UNRA	E Doherty	1653	
M Alvarez	UNRA	M Weitzner	1563	R Fleuriot	1649	THE RECENT CAMPAIGN
B Baird	UNRA	E Wernes	UNRA	D Geymer	1666	FOR USCF NATIONAL OFFIC
K Burton	UNRA	<u>Newark CC</u> (7)		J Henneberger	UNRA	demonstrates that there
M Dennis	UNRA	T Ebarb	1650	C Hurt	UNRA	is indeed a great deal
H Ebarb	UNRA	E Gushwa	1762	D Jones	1635	of vibrancy and dema-
R Fernandez	UNRA	K Gushwa	UNRA	C Lechtaler	1499	cracy in our national
D Flack	UNRA	S Gushwa	1518	M McQuarry	1650	organization, as often
D Flemming	UNRA	G Marshall	1550	R Nash	UNRA	the interchanges be-
T Hengle	UNRA	E Nixon	1658	D Schrock	1636	tween candidates be-
K Jackson	UNRA	B Seymour	1626	D Sherman	1617	came quite heated.
G MacLeod	UNRA	<u>Oakland CC</u> (51)		D Twigg	1650	Many important points
W Orr	UNRA	C Barnes	1333	B Wagner	1465	of national chess were
D Perry	1399	F Bauer	1500	H Wright	1550	effectively brought
M Pick	UNRA	A Boyd	1620	<u>Piedmont Hills High</u>		out in this manner. Be
M Provencal	1266	E Britton	1485	<u>School</u> (15)		sides the platforms
J Thayer	UNRA	H Brown	UNRA	J Brittain	1390	published in <u>Chess Life</u> ,
P Walters	UNRA	P Cass	UNRA	R Gordon	1830	a number of the candi-
D Wheeler	UNRA	W Chew	UNRA	D Hazlett	1200	dates sent more detail-
<u>Hayward CC</u> (17)		F Cook	1783	M Krueger	1830	ed statements of their
R Ausmus	1773	M Despot	UNRA	R Langone	UNRA	position to the USCF
M Canfield	1657	L Dobin	1580	G Masunaga	1521	Directors at their own
J Crimmans	1393	G French	1749	M Masunaga	1480	expense. The debate
C Ehmman	1644	J Friedman	1664	A Mock	1750	between William Goich-
E Fegan	UNRA	D Fung	1035	F Mock	1520	berg and Arpad E. Elo
M Frandy	1631	H Jee	UNRA	G Montanaro	1000	on the USCF rating
J Friedman	1664	J Gerhardt	1595	D Myers	1500	system was conducted
R Holloway	1402	J Gertrand	1554	R Ramirez	1390	very well in this way.
L Hopkins	1394	C Haecker	UNRA	K Terry	1670	Our thanks to all the
K Lawless	1680	B Hansen	1356	D Thacker	900	candidates for a fine--
L Osternig	1632	J Harner	1240	K Yamasaki	UNRA	and productive--cam-
A Pasch	UNRA	G Hayes	UNRA	<u>Richmond CC</u> (13)		paign.
E Salo	1578	F Hibbler	1643	P Arnstein	1430	SCACCHIC VOICE
R Shorman	1989	M Holt	UNRA	P Brown, Jr.	1627	EDITOR MARTIN E.
L Vadnais	1624	R Jordan	UNRA	M Carmel	UNRA	MORRISON is now wri-
R Weikum	UNRA	E Kupka	UNRA	D Claudio	1694	ting a column on chess
J Wheeler	1599	F Leffman	1725	R Ewing	UNRA	laws for <u>Magazine</u>
<u>Livermore CC</u> (18)		E Meyers	1806	D Fjelstad	UNRA	<u>Chess Scribe</u> , of Pro-
P Barry	1668	R Mitchell	1907	W Garrison	UNRA	vidence, Rhode Island.
G Boer	1919	M Morrison	1598	W Jemison	UNRA	He believes that chess
T Curtis	1620	L Osternig	1632	D Madeiros	UNRA	players should be more
R Gulliford	UNRA	W Padgett	1612	G Madeiros	UNRA	familiar with the laws
G Hage	1500	F Pyle	1612	S Marchand	1371	that govern their tour-
T Haratani	1634	R Remy	1634	F Payne	UNRA	namment play and that
C Hendrickson	1661	E Rubsamen	1548	A Smith	UNRA	if they were, they
T McMullen	1628	E Sagan	UNRA	F Thompson	1464	would see the neces-
R McSwiggen	1599	S Schmidt	UNRA	B Werren	UNRA	sity of certain clari-
A Nelson	1459	S Schulman	1640	<u>San Quentin CC</u> (7)		fications and amend-
H Nelson	UNRA	E Smith	1550	E Albrecht	1617	ments. James A. Di
W Nelson	1633	A Som	UNRA	M Brown	1638	Domenico edits this
J Ranelletti	1590	L Soto	UNRA	E Fisher	UNRA	informative and pene-
D Smith	1646	W Sprague	1850	A McFarlin	UNRA	trating magazine.
H Weissenborn	1579	K Stocksdale	1666	N Mihailoviki	1916	THE 1969 SONOMA
J Willows	1644	C Tabler	1764	R Parra	1640	STATE COLLEGE OPEN
<u>Martinez CC</u> (18)		E Tracy	UNRA	W Rostomo	UNRA	will be held on Satur-
B Alaïmo	1534	F Van Sant	UNRA	<u>Walnut Creek CC</u>	(7)	day and Sunday, 30-
R Alvillar	UNRA	J Vetter	UNRA	S Bass	1404	31 August in the Com-
C Bailey	1600	L Warden	UNRA	E Doherty	1653	mons Cafeteria of
R Brown	1634	R Wheeler	UNRA	J Ellett	UNRA	Sonoma State College.
M Canciamilla	UNRA	J Wi taker	UNRA	R Ellett	1550	Entry fee is \$3 for
S Damasceno	1453	H Wong	UNRA	R Jacob	1520	adults, \$1.50 for
J Greenwald	1701	T Wong	1207	D Jones	1635	those under 16. Re-
S Kitabayashi	1653	L Yale	UNRA	S Kilker	1662	gistration will be
R Nace	1655	<u>Orinda CC</u> (20)				from 9:00 a.m.-12:00
D Petersen	1467	M Ayer	1490			m. that Saturday.
J Petersen	1486	L Bosa	UNRA			The five-round Swiss
E Plastrik	1080	A Boyd	1620			tournament offers many
R Quintero	1731	L Brown	1750			trophies, books, and
W Sinn	1620	E Clark	UNRA			sets as prizes.

A MATCH OF THE CCCA SUMMER LEAGUE.
 The Hayward Chess Club team plays the Oakland Chess Club A team on 6 June (Round 1). The match was tied 2-2, but Hayward won by Handicap. Hayward team (left side of table): Ernest M. Bartholomew, CCCA Assistant Publicity Director, Lupe Lopez, Robert Martinez (front to rear); Oakland A team: Craig Barnes, Gary T. Weber, Richard Lee, team captain and CCCA Assistant Publicity Director. ---Story and photograph by Richard R. Shorman, CCCA Publicity and League Director.

Editors
 Central California
 Chess Association
 c/o Post Office Box 1622
 Oakland, California 94604
 Telephone: (415) 582-1973
 THIRD-CLASS MAIL
 ADDRESS CORRECTION
 REQUESTED

NEXT CCCA GENERAL MEMBERSHIP MEETING, INCORPORATING TEAM CAPTAINS' MEETING FOR THE 1969-70 LEAGUE SEASON: Friday, 12 September, 7:30 p.m.,coln Elementary School, 225 Eleventh Street, Oakland (the Oakland Chess Club's quarters). Representatives of all clubs planning to enter should attend. All CCCA members, i.e., members of any of the 21 affiliates listed on p. 4 supra, have full privileges of debate and voting. Nonmembers are welcome. Rules and prizes for the 1969-70 league will be adopted. See p. 2 supra for more details about this important meeting.

NEXT USCF TOURNAMENTS OF THE CCCA AND ITS AFFILIATES: 6-7 September, A's Regional Class Tournament at Concord (State Championship Qualifying Points will be awarded pending CSCF and CCCA approval); see closure (tournament bulletin) for details.

DEADLINE FOR SCACCHIC VOICE MATERIAL: news and tournament data, reember; other material, including columns, 1 October--for next ue.

CHESSE ORGANIZERS: Please put Scacchic Voice on your mailing list newsletters and tournament bulletins. Trade subscriptions welcome. **ADDRESSEE: PLEASE NOTIFY THE EDITORS AS SOON AS POSSIBLE OF ANY CHANGE IN YOUR ADDRESS. SCACCHIC VOICE IS NOT FORWARDED BY THE POST ICE.**

NEXT AFFILIATE ASSESSMENTS DUE: 5 October are delinquent this after. Club officers responsible should send 20¢ per club member, along with the full name and address (with ZIP code) of each member to the CCCA Treasurer (address on p. 3 supra). "A fine of \$1 (will) be levied against any affiliate which pays its assessment more than two weeks late without a valid excuse accepted by the Treasurer." **USCF MEMBERSHIPS AT 20% DISCOUNT:** \$4 (under 21), \$8 (21 and over) per annum--regularly \$5 and \$10, respectively--for new or renewal memberships, if sent to the CCCA Treasurer (address on p. 3 supra). Benefits include a Chess Life subscription and eligibility for a USCF (National) rating. **CSCF MEMBERSHIPS:** \$2.50 per annum. Send to Dr. Ralph Hulegron, CSCF Treasurer, 1501 Le Roy Ave., Berkeley 94708. Benefits include a subscription to The California Chess Reporter. CCCA members are most heartily urged to become members of the USCF and CSCF.



CHESSE CLOCKS--LOWEST PRICE IN THE US; NO WAITING MONTHS FOR OVERSEAS DELIVERY: BHB Extra, brown plastic case, 6" x 3" x 1 1/2"; two-year guarantee manufacturer; the world standard for dependable quality and durability at a moderate price" /USCF. ONLY \$12.50. Immediate pickup from the CCCA Treasurer (address on p. 3 supra) or Fred Crosby (3063 Randall Wy., Hayward 94541; 537-3928), or by mail (add 60¢ postage and insurance).

