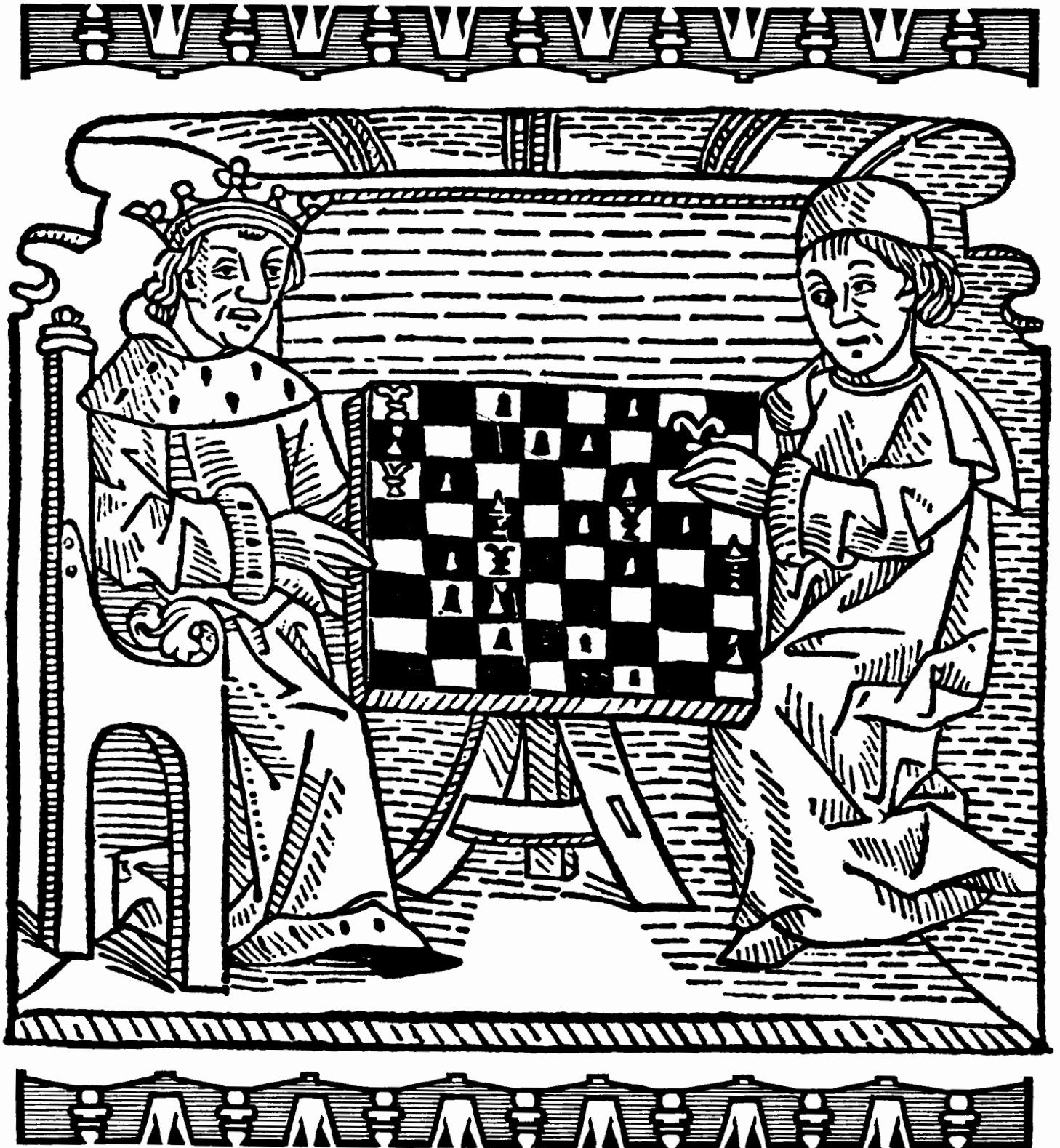


CHESS VOICE

Vol. 12, No. 1

February-March, 1979

\$1.00



CHESS VOICE

5804 OCEAN VIEW DRIVE Telephone:
OAKLAND, CALIF. 94618 (415) 653-6529



CalChess

NORTHERN CALIFORNIA
CHESS ASSOCIATION

Chess Voice is published at least six times a year by the Northern California Chess Association. Single copies are available at 75¢/issue from the editor or from DeLauer's News Agency (Oakland), Mac's Smoke Shop (Palo Alto), and the Gambit Game Stores (Berkeley and San Francisco). Back issues are available for 50¢ each from the editor.

The opinions expressed in this publication are those of the editor, or of bylined contributors. They do not necessarily represent an official policy of the Northern California Chess Assoc.

Scoresheets and annotated games submitted for publication should be mailed to Games Editor Richard Shorman c/o Hayward Daily Review, PO Box 3127, Hayward CA 94540. All other material should be sent to the editor at the above address.

Chess Voice is a member of COSMEP (Committee of Small Magazine Editors and Publishers) and of AUSCJ (Association of U.S. Chess Journalists).

Changes of address. If you move, the Post Office does not notify us, nor does it automatically forward your magazines. Send your new address, your old address, and your expiration date to Bryce Perry, 826 Richardson Ct., Palo Alto, CA 94303.

Copyright 1978 by John Larkins. All rights reserved except that any portion of this publication may be reprinted in any chess periodical of less than 5,000 circulation so long as credit is given to the author (artist, photographer) and to Chess Voice.

Copy Deadline

Articles, club news: March 20.

Flyers March 25.

If all goes well (it sure didn't for this issue) the next issue will appear in mailboxes during the middle of April.

Chairman: Fred Muollo
Vice-chairman: John Larkins
Treasurer: Bryce Perry
Chess Voice: John Larkins
Minutes: Mike Goodall
Memberships: Frank Hamaker
Tournament: Alan Benson,
Mike Goodall,
Jim Hurt, and
Ted Yudacurksi
Clearinghouse: John Larkins
Club matches: Fred Muollo
Championships: Hans Poschmann
Youth: John Marx
Masters: Frank Thornally
USCF Liason: Richard Fauber
Prisons: Jeffrey Dubjack
Past Chairman: Peter Prochaska

CalChess is the USCF state chapter for Northern California.

How To Become a CalChess Affiliate: Any Northern California chess club can become an affiliate for \$5/year. This includes a subscription to Chess Voice and entitles the club to participate in CalChess team and individual championships.

Advertising Rates

Pre-printed flyers--\$25/issue. Can be up to 10"x15" in size. (Consider the advantages: you get the use of our address list, we do the addressing, and we pay the postage. Every chess club in Northern California and the great majority of active tournament players will see a copy.)

Full-page ad--\$40/issue. (Copy should be 8-3/4"x 11 1/2", not counting borders. Prepare for photocopying.)

Half-page ad--\$20/issue. (Copy should be 8 1/2" wide x 5 1/2" high or 4 1/4" wide x 11 1/4" high.)

Quarter-page ad--\$10/issue. (Copy should be 4 1/4" wide x 5 1/2" high.)

Eighth-page ad--\$5/issue. (Copy should be 4 1/4" wide x 3-3/4" high.)

Classifieds--5¢/word.

Reduced rates--Twenty percent off to any advertiser that uses the same amount of space in 6 consecutive issues.

STAFF

EDITOR: John Larkins

GAMES & PHOTOS: Richard Shorman

CONTRIBUTORS: Alan Benson, Richard Fauber, NM Dennis Fritzingler, IM George Koltanowski, GM Ludek Pachman, Peter Prochaska, Mike Thomas, NM Paul Whitehead.

CONTENTS

Features

CALCHESS MASTERS' OPEN . . . 150
CHESS COURSE: LESSON TWO . 158

Annotated Games

Whitehead-Grefe . . . 152
Seirawan-Cornelius . . . 153
Seirawan-Browne . . . 154
Browne-Strauss . . . 154
Lindsay-Fritzinger . . . 155
Strauss-DeFirmian . . . 162
Tal-Filip . . . 160

Regular Departments

Letters to the editor . . . 147
From the grapevine 148
CalChess news 156
Chess clubs 157
Games department 160
Tournament results 163
Kolty's Korner 165
Tournament calendar 167
Places to play 168

HOW TO SUBSCRIBE TO CHESS VOICE

One-year subscription = \$6. This includes a Tournament Membership in CalChess, the USCF state chapter for Northern California. (CalChess Tournament Membership is required to participate in most of the major tournaments in this region.)

Juniors under 18 can subscribe at a reduced rate of \$4/year. (Includes full CalChess Tournament Membership.)

Out-of-state residents (and Southern Californians) can subscribe for \$5/year. (Includes Associate Membership in CalChess, not good for weekend tourneys.) This option is also available to Northern Californians who do not play in weekend tournaments.

NEW SUBSCRIBERS: Indicate which issue you want your subscription to start with: Feb/Mar; Apr/May; Jun/Jul; Aug/Sep; Dec/Jan.

RENEWALS: Please indicate when your old subscription runs out. (The month and year are in the upper right-hand corner of your mailing label.)

SEND CHECKS TO: CalChess, 826 Richardson Court, Palo Alto, CA 94303.

BE SURE TO INCLUDE: name, address and zip code, type of subscription (Regular = \$6; Junior = \$4; Out-of-state = \$5), birthdate (if junior), which issue to start with, and--optional--telephone number and occupation.

COVER

15TH CENTURY WOODCUT

The cover drawing is a woodcut from one of the first books ever printed: The Game and Playe of the Chesse, printed and published by William Caxton, in London, in 1474.

Notice the scratch on Black's third rank.

The borders at top and bottom are not part of the original.

Letters to the Editor

THE READERS DISCOVER SOUR "GRAPES"

Letters may be edited to conserve space and avoid repetition. Correspondence with the editor is assumed to be available for publication unless stated otherwise.

□ □ □

Another view of the Olympiad

After seeing Koltanowski's false comments on the Buenos Aires Olympiad (Dec-Jan, page 125), I feel obliged to write this letter. The lighting, boards and pieces were excellent. I never heard one shot fired during all of my play. There was unfortunately poor ventilation and towards the end of the playing sessions it was very hot. Although there wasn't a special room with boards following the games, there was a place where they went over some of the better games by some of the best Argentine players who boycotted as they wanted more money to play.

Mr. Koltanowski has to realize that the players are more important than visiting organizers. The spectators, in my opinion, were extremely close--about three feet from the boards. The hotel was the best I ever stayed at during an Olympiad and the food outside the hotel is some of the best in the world, where Koltanowski was seen on occasion. The few times I had my meals in the hotel I never noticed Koltanowski, so I can only assume that he didn't suffer too much. By the way, I never heard any planes either.

I do agree with Koltanowski that the U. S. players should be compensated for having to eat out and pay for their own meals.

Regarding the comment about me in the October-November "Grape Vine" (page 99), I agreed in August to repay the USCF with the fee I would get from the Olympiad.

Chess Life & Review has already turned into mush and I'd rather read Chess Voice. Congratulations!

--Walter Browne, Berkeley

A reply from Koltanowski

Conditions at the Olympiad may have been good for the players, but they were not good for the spectators, and spectators are important, too. There was no target practice at night, when the rounds were played, but it did go on during the day, when the adjournments were played. If Browne had no adjournments, more power to him.

As for the food, each to his own taste. The hotel food was provided to the players for nothing and was worth nothing. The food outside was marvelous.

--George Koltanowski, San Francisco

Editor's note: Criticisms similar to Koltanowski's have appeared in Pal Benko's Olympiad report in the February Chess Life & Review and in Jonathan Berry's report in the Jan/Feb Chess Federation of Canada Bulletin (page 17). Berry writes, "The players were distributed round a long corridor, hot and noisy, with a shooting range and an airport nearby." Jim Tarjan heard rifle fire while he was playing and confirms that the hotel food was poor.

Warmed up leftovers

Your Dec/Jan issue contains a Pachman analysis of a position from the Giuoco Piano. He analyzes this "shocker" for half a page, but neglects to mention that the position after 10...Nc4 is quite standard and has been examined in Horowitz, ECO, MCO, Reinfeld, and elsewhere--although via a transposition.

My point is that there are plenty of problems in the openings still to be resolved in print without warming up leftovers.

As a sample, I give you an unsound Queen sac from ECO: 1 e4 e5, 2 Nf3 Nc6, 3 Nc3 Nf6, 4 d4 ed, 5 Nd5 Ne4, 6 Qe2 f5, 7 Ng5 d3, 8 cd Nd4, 9 Ne4?? Ne2, 10 Bg5 Nf4!...and White must lose a piece.

Yours for fresh analysis,

--Daniel Finucane, "On the road"

Reply: Reader Finucane seems to have missed Pachman's point: "Can one actually refute all of the books so easily and furthermore with such an ancient system? No, such is not the case." The nonbook move 7...Bc3+ seems to be new and advantageous, but it is shown to lead to an old position.

A modest proposal

After reading John Larkins' article on Bobby Fischer and his relationship with the cult-like World Wide Church of God, I am moved to pledge \$25 towards a "Free Bobby" fund.

Donations from other interested private citizens and groups could be used to hire a top-notch deprogrammer to snatch Bobby's body in order to liberate his mind.

American Chess Foundation and USCF, please copy.

--Kenn Fong, Oakland

A medical problem

Please change your mailing list to direct future issues to my home address. (If they are sent to my office I may keep patients waiting and not get any work done!)

--Joseph Wagner, M.D., Los Angeles

New Mexico defended

In the Dec-Jan "Grapevine" you note with surprise that Lindsay Phillips was appointed FIDE Arbiter in Buenos Aires last fall since "he is reported to be a persona non grata in his home state of Texas and confines his organizing to New Mexico, not noted for its major tournaments."

I must take you to task for your CalChess provincialism: (1) Lindsay Phillips has organized one US Junior Open in Las Cruces, and was the prime mover in the organization of the 1973 US Championship in El Paso. (2) Lindsay lives in El Paso which is in Texas only by the whim of an 1853 boundary maker. Culturally and geographically, it's really part of New Mexico. Furthermore, it's 400 miles from any Texas chess activity, so the question of Lindsay's participation is academic.

--Max Burkett, Oakland

Three-time New Mexico Champion

More Letters

A clarification

In your Dec-Jan "Grapevine" item about FIDE appointments you write: "ISAAC KASHDAN was appointed to the Rules Committee--taking the position left vacant by MARTIN MORRISON, who resigned."

I would like to make a clarification. I did not "leave vacant" a position on the Rules Commission. The terms of all members came up for election at the 1978 FIDE meeting, so I informed FIDE that I would not be standing for re-election for another four-year term. Also, members of the commission are elected at-large by FIDE; there is no specific position allotted to the USA to be filled by a USA representative.

--Martin Morrison, San Lorenzo

Another clarification

While I always enjoy seeing my name in print (Dec/Jan "Grape Vine"), I must protest it is a slight exaggeration to say I have proposed pulling out of the USCF. True, I have never regarded such a proposal as unthinkable (The USCF is just a tool, to be discarded when no longer servicable), but so far the USCF has been a net benefit (if sometimes only marginally) and I haven't proposed leaving it. Others in the Southland have, and I have been not unfriendly to their plans. However, I remain at least technically not guilty of proposing pulling out of the USCF.

--David Carl Argall, La Puente

And still more clarifications

Because I know how seriously you strive to keep Chess Voice accurate and informative, I'd like to call your attention to the following errors in your Dec/Jan "Grapevine" column:

- 1) Jack Peters was not awarded the International Master title at Buenos Aires.
- 2) Arpad Elo has not been confirmed as Chairman of the FIDE Qualification Committee; he was merely re-elected to a third term as Secretary.
- 3) A USCF Policy Board vote did not leave the Elo matter to me to decide in Buenos Aires. All that the Board voted on is whether the United States should support Elo's nomination when the matter came before the FIDE General Assembly.
- 4) George Koltanowski was not "asked to step down" as FIDE Zonal President, since his injury on the way to Buenos Aires and other factors prevented me from implementing my announcement to offer him to FIDE for this position.
- 5) Timothy Redman and Lindsay Phillips were not "appointed" FIDE Arbiters. This is a title one attains for past performance and present capability, which both these men have demonstrated.

--Gary Sperling, New York
President, USCF

Reply: Sperling has caught "the Grapevine" in two clearcut factual errors (items 1 and 2).

The remaining three "errors" are open to interpretation. It is technically true that Kolty never actually became FIDE Zonal President, but his sole reason for being in Argentina was to serve in that capacity.

Three different members of the USCF Policy Board have told me that they did leave the Elo matter to Sperling to decide. Had Elo not been

nominated by Sperling, he could hardly have been the recipient of the 106-0 confirming vote he received at Buenos Aires.

While it is technically true that Redman and Phillips were "awarded" the title of FIDE Arbiter, not appointed as such, this is another case of the nomination being much more crucial than the final election. Informed FIDE-watchers tell me that once a candidate for Arbiter is nominated by his national chess federation, there is about a 90% chance of his being elected.

I apologize for the factual errors, and I appreciate the close attention that Sperling, Morrison, Argall, and Burkett are paying to the column. But I hope readers of future "Grapevines" will keep in mind that brief items containing only one or two sentences must, of necessity, be imperfect summaries of complex events.

FROM THE GRAPE VINE



by the editor

ISAAC KASHDAN reports that the Soviet Chess Federation has chosen its two representatives for the 1979 LONE PINE tournament. They are VITALY CZESHKOVSKY, Co-champion of the USSR (with MIKHAIL TAL), and OLEG ROMANISHIN. Also invited, but not yet heard from, are TAL and World Women's Champion MAYA CHIBURDANIDZE.

* * *

After the recent Olympiad in Buenos Aires, a number of participants joined with several Argentine players who had boycotted the Olympiad to hold a strong international tournament with 11 GM's out of 13 players. The winner was ULF ANDERSSON, of Sweden, at 9-4. Tied for second were OSCAR PANNO (Argentina) VASSILY SMYSLOV (USSR), and RAFAEL VAGANIAN (USSR)--all at 8½-4½. WALTER BROWNE (USA) and FLORIN GHEORGHIU (Roumania) tied for fifth place with 8-5.

* * *

Monterey TD TED YUDACUFSKI is reported to have been stabbed at the Monterey Chess Center while attempting to restrain an unruly patron. Ted was hospitalized, but is in good condition. Whether the patron is a chessplayer, or a dart-player was not immediately known. Nor was it known whether there is a connection with an arson attempt at the Monterey Chess Center several days earlier which cost \$500 in smoke damage. Trouble certainly comes in bunches. On the brighter side, however, Ted has been added to the Lone Pine tournament director staff.

* * *

CHURCH'S FRIED CHICKEN, INC. recently evaluated the amount of publicity being generated by its national chess program and decided that it warranted continued support of one chessplayer, but not two. Consequently, LARRY CHRISTIANSEN remains on Church's payroll, but JACK PETERS does not.

* * *

The second annual Penrod Memorial Computer Chess Tournament (where microprocessors play each other)

s recently concluded in San Diego. CHESS CHALLENGER-10 was the clear winner with 10 wins, 2 draws, 10 losses in the double round robin. Second place went to last year's winner SARGON I (It plays on the Tio Shack TRS-80 personal computer) with 6 wins, 5 draws, and 1 loss. BORIS captured third place with 4 wins, 2 draws, and 3 losses. Challenger-10 won both its games with Boris, but drew both its games with Sargon I.

* * *

A new chessplaying microcomputer is scheduled to appear on the market in August. This is ATARI VIDEO CHESS, a cartridge for the Atari Games Computer, which plays through your TV set. It has been developed by Atari engineer LARRY WAGNER, with the assistance of IM JULIO KAPLAN. Minor final adjustments prevented it from participating in the Penrod Tourney reported above, but it has won its first two games against Challenger-10 and may prove to be the strongest of the current crop of chessplaying microcomputers.

* * *



ART NEAL, inventor of the well-known Art Neal Chess Case, died in July of last year. The Case is still available from his widow.

* * *

Chess masters are needed to play correspondence games with Soviet political prisoner ANATOLY SHCHARANSKY. Shcharansky, a leader of the Soviet Jewish migration movement is currently serving a 13-year sentence for anti-Soviet activity. The games are for the purpose of uplifting Shcharansky's spirits while in prison and letting the Soviets know that people are still concerned about him. Further information is available from Brian Rosman, of Stanford University, at (415) 497-1602.

* * *

In the last "Grapevine", FRED TOWNSEND's new magazine "What's Going On in U.S. Chess" was described as expressing the views of "the loyal opposition." Well, it turns out that Fred's opposition is not so loyal. In fact, he is attempting to set up a rival national chess federation!

Chess clubs throughout the country recently received a Townsend flyer announcing the formation of the AMATEUR CHESS ASSOCIATION OF AMERICA, INC. It will award cumulative rating points (as in Bridge) to all types of amateur games, from informal lunch-hour matches and speed chess to competitive games in tournaments that do not have cash prizes. These cumulative rating points can be added up to earn the following titles: "Club Master, Local Master, Sectional Master, Divisional Master, Regional Master, and National Master." (Further details are available for

a self-addressed, stamped envelope from Townsend at 10 Bermuda Road, Wethersfield, CT 06109.)

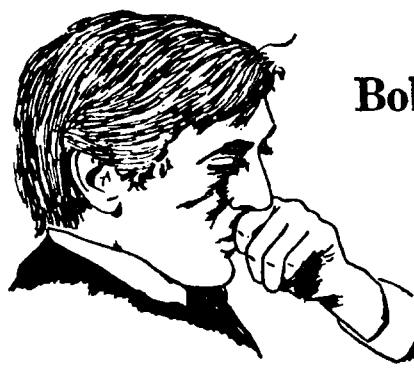
Whether such an association will ever get off the ground, and, if so, whether it would help or hinder the USCF, are open questions at this point. It is generally acknowledged that for every tournament-playing USCF member there are 15 or 20 casual players who prefer a more relaxed atmosphere than is typical of USCF-rated tournaments with their fierce competition and high entry fees. If a significant number of these could be drawn into an amateur organization, they might form a pool from which new USCF members could be recruited. On the other hand, some present USCF members would be lured away.

As President of the Association of U.S. Chess Journalists, I formally protested the USCF Policy Board's earlier vote not to allow Townsend's magazine to advertise in Chess Life & Review. (At their February meeting in Los Angeles, the PB voted to leave such decisions in the hands of Meyerson.) If the magazine becomes the official organ of the new association, of course, the whole question is cast in a different light.

* * *

The last issue of CHESS VOICE was its 64th. (Ten years at six issues per year, with two missing.) It seems appropriate to pause momentarily and contemplate the fact that you could construct a 64-foot-square chessboard and cover every square with a different issue of Chess Voice.

* * *



Bobby Fischer:

"ALL I WANT TO DO EVER IS PLAY CHESS."

During his return from Belgrade (where he negotiated with SVETOZAR GLIGORIC for a possible match) BOBBY FISCHER stopped over in West Berlin for 10 days, according to a report in Deutsche Schachzeitung. While there, Fischer is said to have haunted second-hand bookstores looking for rare chessbooks. He granted only one interview, to a reporter, Alfred Sheppeldt, he had previously met at a USA/West Germany chess match in 1960. Here are some quotes from the Sheppeldt interview:

Q: "Will there be a match between you and Gligoric?" A: "Possibly, but that is not definite yet."
 Q: "Would you like to play a match with World Champion Anatoly Karpov?" A: "I am prepared to play, but under no circumstances would I play under FIDE auspices."
 Q: "Under what conditions would you play?" A: "I would have to be offered at least a million dollars. But I repeat that I will never play under conditions dictated by FIDE."

In January, VIKTOR KORCHNOI was reported to have proposed to Fischer that they play a match for the "Professional" World Chess Championship. So far, there has been no reply from Fischer.

CalChess Masters' Open 1979

1979 CalChess Masters' Open

January 10-14, 1979

(Crosstable in Harkness/Median tie-break order)

1. IGM Walter Browne (2584)
2. Leonid Stolyarov (2406)
3. Paul Cornelius (2315)
4. Jay Whitehead (2331)
5. Vincent McCambridge (2334)
6. David Strauss (2408)
7. Victors Pupols (2243)
8. Yasser Seirawan (2480)
9. Lawrence Kaufman (2321)
10. Paul Whitehead (2385)
11. IM John Grefe (2457)
12. Nick deFirmian (2422)
13. Rajan Ayyar (2223)
14. Dennis Fritzing (2296)
15. Boris Baczynskyj (2320)
16. William Batchelder (2308)

Rd. #1	Rd. #2	Rd. #3	Rd. #4	Rd. #5	Rd. #6	Rd. #7
D3	W25	W2	W8	D4	W6	D5
W28	W19	L1	W20	D8	W9	D4
D1	D12	W25	L6	W14	W11	W8
W26	W11	W24	W7	D1	D8	D2
D13	L7	W21	W11	W16	W12	D1
W14	L20	W28	W3	D12	L1	W10
D24	W5	W11	L4	L9	W21	W13
W17	W18	W20	L1	D2	D4	L3
D21	D13	W19	D12	W7	L2	D15
L20	W21	D27	D18	W13	W17	L6
W16	D4	L7	L5	W20	L3	W17
D23	D3	W17	D9	D6	L5	D14
D5	D9	D18	W22	L10	W16	L7
L6	Exc.	W15	W25	L3	W18	D12
L25	L28	L14	Bye	W19	W20	D9
L11	D27	W26	W24	L5	L13	W21

Total	Place
5½-1½	1st
5-2	2-5
5-2	2-5
5-2	2-5
5-2	2-5
4½-2½	6-7
4½-2½	6-7
4-3	8-10
4-3	8-10
4-3	8-10
3½-3½	11-16
3½-3½	11-16
3½-3½	11-16
3½-3½	11-16
3½-3½	11-16
3½-3½	11-16

- | | | | | | |
|-------------------------|-------|-----------------------------|-------|----------------------------|-------|
| 17. Zaki Harari (2301) | 3-4 | 21. Curtis Carlson (2202) | 2½-4½ | 25. Rainer Rickford (2202) | 1½-5½ |
| 18. Fred Lindsay (2331) | 3-4 | 22. Elliott Winslow (2331) | 2½-4½ | 26. David Blohm (2221) | 1-6 |
| 19. Tom Dorsch (2211) | 3-4 | 23. Robert Salgado (2297) | 2½-4½ | 27. Paul Enright (2223) | 1-6 |
| 20. Craig Barnes (2245) | 2½-4½ | 24. Perry Youngworth (2359) | 2-5 | 28. Harry Radke (2256) | 1-6 |

Note: Exc.: Excused from play.
 ____: Unplayed game.

"Grand Prix" Points: Browne:24 / Stolyarov/Cornelius/Whitehead,J./
 McCambridge:15.5 each Strauss/Pupols:7 each



LEFT. The Masters' Open was made possible by a generous donation from Richard Fauber, a chess columnist, expert player, and CalChess officer.

CENTER. The tournament logo, a golf-playing King, reminds us of the traditional Masters' Open in golf.

RIGHT. Grandmaster Walter Browne received a check for \$1,700 and a trophy from Tournament Director Alan Benson. In addition to winning a clear 1st place, Browne also won a bonus for the best overall quality of play. (Photos by Bryce Perry.)



LEFT. Good media coverage drew a crowd of spectators to the Masters' event.



RIGHT. With only twenty-eight players, there was plenty of playing room. (Photos by Bryce Perry.)

TOURNAMENT REPORT by R. E. FAUBER

The organizers of the CalChess Masters Open (held January 10-14 at the University of California Student Union in Berkeley) thought the prize fund would be the attraction that would lure masters to compete. They were wrong. It was the challenge of playing against other masters which drew 28 players from eight states to the event.

Those who came the farthest expressed this spirit best. Boris Baczynskj, a Philadelphia chess professional, invested his winnings in a Pennsylvania open tournament to come to California. "I like to play in the strongest events I can find. This sounded good, and I get to play some people I don't usually play."

Larry Kaufman came in from Florida because, "I haven't played in a strong tournament for three years. There isn't much in Florida. I think a lot of masters drop out of chess for lack of competition. There is only room for a few to make a living out of chess, and the other masters lose interest when they have only weak tournaments to play in."

Viktors Pupols took time off from his Bremerton, Washington business, although he did not expect to win a prize in Berkeley. "Where else can I get the chance to play master chess?" he asked. "I really appreciate this opportunity."

More in how they acted than what they said could you see this desire of master to play other masters. The play was the thing. Before every round they read the pairing charts. They went to their boards. They played. They signed each other's score sheets and turned them in.

It was one of the more intriguing human interest stories of modern American life. Here were 28 high-strung, ambitious men--all acting like perfect gentlemen and perfect sportsmen. There was but a single incident, which entailed nothing important to the outcome of the game, and which generated no rancor.

Tournament directors Alan Benson and Max Burkett moved a television set and a couch into their directors' room to while away the hours while the tournament ran itself. During Friday evening's round, some of the more broadly cultured masters congregated,

when they were not on the move, to watch "The Rockford Files". Elliot Winslow built up a nice position on this fare, but it tailed off to a draw during the Evening News.

Benson and Burkett had already put three tournaments' worth of work into promoting the event. They generated reams of pre-tournament publicity which drew capacity crowds of spectators to watch the play.

In this endeavor, too, the masters contributed unstinted cooperation. John Grefe broke off play in his first round game to grant an interview for a San Francisco television station. Walter Browne was reluctant to play because Swiss system tournaments do nothing to advance his career, but he generously entered to add the luster of his name to the importance of the tournament. The sometimes prickly Browne was a model colleague to the other masters.

Browne became disturbed only once. He rushed into the tournament directors' room and asked, "Excuse me, did you see my sweater around anywhere?" When the directors said they hadn't, he responded, "No? Well, was I wearing one today?" Assured that no one had seen him with a sweater on, he walked off satisfied. When Browne comes to play chess, there is nothing else on his mind.

No one was surprised when Browne won the tournament with $5\frac{1}{2}-1\frac{1}{2}$, but the quality of his play was worthy of an international grandmaster event. The strain of playing grandmasterly chess showed plainly on his face when he declared after the last round, "This is hard work for me. I'm exhausted."

The crowds had a special Berkeley flavor. There was a Hare Krishna devotee, sworn to silence except for religious purposes, who resorted to sign language to inquire the time from another kibitzer. Two "street people", who were not into chess, moved into the foyer to be near other human beings, squatting by a candle to warm their hands and take in the vibes.

What most stood out in my mind was that all the masters acted like champions, and they all were. The creativity, the clash of ideas, the implacable hostility which is chess, all came out only over the board. It is in the games that the masters express-

ed their fighting spirit. They had not come to play safe and jockey for prizes. They came to fight, as evidenced by the fact that Black won 38 games to White's 28. Clearly, players playing White were taking risks above the average. There were some money draws in the final round, but most draws went deep into the ending. Seirawan, for example, forced Whitehead to demonstrate the draw of rook and pawn against rook, and then of king and pawn against king, before conceding a half point on move 81.

It fell to me to judge the special prizes. I always thought it would be fun to award prizes for



International Master John Grefe
(Photo by Shorman)

"A GOOD GREFE GAME BURSTS OUT WITH ENERGY, LIKE LAVA FROM A SLEEPING VOLCANO."

So many games deserved prizes, but there was not enough money to go around. John Grefe figured heavily in the brilliancy prize sweepstakes. A good Grefe game bursts out with energy, like lava from a sleeping volcano. The Barnes-Grefe game featured an intuitive sacrifice. That Barnes collapsed prematurely in time trouble hurt its chances, as did the fact that it never caught the fancy of other masters in the competition.

Grefe's game against Jay Whitehead displayed taut play, replete with threats and sacrifices that formed a beautiful maze.

brilliancy, schönheit, gesundheit, and other special aspects of healthy chess. All you had to do was to sit down and play over all the games, choose the ones you liked, and pay out the money.

Unfortunately, there is more to it. What is "brilliant"? There should be sacrifices. But is a sort-term Queen sacrifice prettier than an intermediate-term exchange sacrifice or a long-term pawn sacrifice? If a sacrifice involves a maze of complications, how sound must it be? For is there not something fortuitous in awards, since the judge's analytical abilities may make him see something profound in one game, while he misses an obvious continuation in another?

Sicilian Defense
White: Jay Whitehead
Black: IM John Grefe

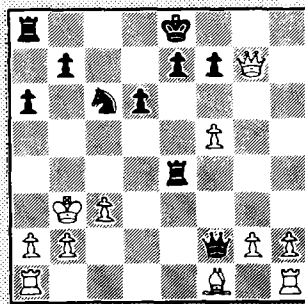
1 e4, c5; 2 Nf3, d6; 3 d4, Nf6;
4 Nc3, cd; 5 Nxd4, a6; 6 Bg5,
Nc6; 7 f4?! (7 Qd2!), Ng4!; 8
Nd5, h6; 9 Bh4, g5!; 10 fg, Bg7

Now 11 Nxc6, bc; 12 Nc3, Qb6; 13 Rb1, hg; 14 Bg3, Rxh2! and the wolf is at the door.

11 Nf5, Bxf5; 12 ef, hg; 13
Qxg4, Rxh4; 14 Qxg5, Qa5+

Exciting now is 15 Kf2, Bd4+; 16 Kg3, Qxd5 and (I.) Qxh4, Qe5+ and 0-0-0 wins, or (II.) 17 Qg8+, Kd7; 18 Qxa8, Ne5!; 19 Re1, Rg4+; 20 Kh3, Bf2; 21 Qh8 (21 g3, Rxg3+), Qd4 also wins.

15 c3, Re4+; 16 Ne3, Qb6; 17
Qxg7, Qxe3+; 18 Kd1, Qe1+; 19
Kc2, Qf2+; 20 Kb3



Now it was time to sparkle. Compared to earlier variations these are quite a bit easier. Grefe is a very deep thinker, however, and sometimes the obvious eludes him. Crushing is 20...Nd4+; 21 cd, Re3+; 22 Kc4 (Ka4, Qxb2), Qc2+; 23 Kd5, Qc6 mate. Refusing the sacrifice costs material and a bad position. Instead of the capper, we get tragedy.

20...Qb6+; 21 Kc2, Rc8?; 22 Rcl,
Re5; 23 Qg8+, Kd7; 24 Qxf7,

Nd4+; 25 Kb1, Rxf5; 26 Qg6, Rf2;
27 Qg4+, e6; 28 Qg7+, Kd8 and
quickly drawn.

A beautiful game, but not a prize-winner. The game that won the brilliancy prize has been saved for last.

The winner of the best ending prize added a touch of irony. Two candidate games, Paul Cornelius against Grefe and David Blohm against Rainer Rickford were end game queening combinations--pretty, but not sustained efforts. The only other ending of note was Jay Whitehead--Viktors Pupols. Jay made an equal-material queen ending look easy.

As everyone knows, Jay thinks the last game he won is the best game he has ever played. But not this game. "It was easy; he hung a pawn," Whitehead responded to a compliment. And all the time I thought Pupols was aiming for counterplay. There is satisfaction in giving Jay a prize for that rare game he didn't like.

"FOR GENERATIONS PEOPLE HAVE WON PRIZES FOR THROWING MATERIAL AROUND WITHOUT A CARE FOR TOMORROW."

The criteria for rewarding "best resistance" with a prize might seem obscure, but for generations people have won prizes for throwing material around without a care for tomorrow. It seemed only fair to reward someone who could resist dangerous or dangerous-seeming threats and emerge with his skin still on his skeleton. The prize begged for a model of defensive play.

In the final round Cornelius faced the nation's top-ranked junior, Yasser Seirawan (2480), and the winner would get \$500 more in

size money than the loser.

Seirawan decided to show the world that he is a great attacking player. Cornelius calmly demonstrated that he is not. In any event, the kibitzers, mostly amateurs, persisted in predicting Seirawan win instead of this model of the resources of the defense.

English Opening

White: Yasser Seirawan
Black: Paul Cornelius
(Best Resistance Prize)

1 c4, Nf6; 2 Nc3, c5; 3 g3, e6; 4 d3, Be7; 5 Bg2, O-O; 6 e4, Nc6; 7 Nge2, Rb8

White essays a junk formation, which I have been unable to resist laying at the most inopportune times over the past 15 years. Here it means very little as the king-side attack needs the weakening ...g6 to have any prospects at all.

'HE NAILS DOWN THE ENDING--LIKE FASTENING THE LID ON A COFFIN.'

What makes this a prize-winning game is that Black illustrates all the tools which the defense has at its command. The thrust ...b5 begins to establish counterplay on the wing opposite to White's attack. Cornelius does not become rattled that his threats take a long time to develop. Rather, he exchanges White's most menacing pieces and delays the pawn-storm by artful blockade. He refutes the demonstration on the wing by attack in the center, one of the hardest resources to find in actual practice. Finally, he nails down the ending--like fastening the lid on a coffin.

8 O-O, a6; 9 f4, d6; 10 h3, Ne8 11 g4, b5; 12 b3, Nc7; 13 Be3, Bb7; 14 Rc1, e5; 15 f5, Bg5

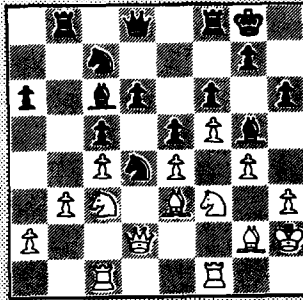
Now Black has resources, after 16 Bxg5, Qxg5; 17 Nd5, Ne8. White has to be careful, particularly to keep the game alive if he wants to win.

16 Qd2, h6; 17 Kh2, bc; 18 dc, Nd4; 19 Ng1, f6?!

Cornelius prefers to live with a higher-risk factor in defense than I do. I would have gone directly for 19...a5. This provocative move ultimately wins by in-

citing White to the wrong plan.

20 Nf3, Bc6



Start an attack; play an attack: 21 h4, Nxf3+; 22 Rxf3, Bxh4; 23 Bxh6 wins. After 21 h4, Bxe3; 22 Qxe3, a5; 23 g5, Kh7--White at least has loosened the king-side and the chances are in the balance. By playing methodically, Seirawan begins his slide to oblivion.

21 Kg3?, Bxe3; 22 Qxe3, a5; 23 Nh4?

Very positional. The knight occupies an advanced hole, but it is never heard from again. Attackers would try 23 h4, and the squeamish positional players 23 Nd2.

23...a4; 24 ba, Rb4; 25 Ng6, Re8; 26 h4, Rxc4; 27 Qd3, Rb4; 28 Rb1, d5!

This is the center break which frees the wretched knight at c7. Noncommittal replies are preferable, but 29 Rf1, de; 30 Bxe4, Nd5 favors Black.

29 Rxb4, cb; 30 Nxd5, Nxd5; 31 Qc4, Bxa4; 32 Qxd5+, Qxd5; 33 ed, Ne2+; 34 Kf2, Nc3

There is only sorrow in 35 Ra1, Bb5; 36 Bf1, Bxf1; 37 Kxf1, Ra8; 38 d6, Rd8.

CALCHESSE MASTERS' OPEN TOURNAMENT RESULTS

- 1st, Walter Browne (2584), Berkeley, 5½-1½, \$1,800 plus trophy and \$100 bonus for highest quality set of games.
- 2nd-3th, Leonid Stolyarov (2406) (trophy), San Francisco, Paul Cornelius (2315) (\$100 special award for "Best Resistance" plus trophy), Berkeley, Jay Whitehead (2331) (\$100 for "Best Endgame"), San Francisco, and Vincent McCambridge (2334), LaHabra, 5-2, \$625 each.
- 6th-7th, David Strauss (2460), Riverside, and Victor Pupols (2243), Bremerton, Washington, 4½-3½, \$250 each.
- 8th-10th, Yasser Seirawan (2480), Seattle, Washington, Lawrence Kaufman (2321), North Miami Beach, Florida, and Paul Whitehead (2364), San Francisco, 4-3, \$133.33 each.
- 11th-16th, John Grefe (2457), Eugene, Oregon, Nick deFirman (2422), Berkeley, Rajan Ayyar (2223), Lompoc, Dennis Fritzing (2296) (\$100 Brillancy Prize), Berkeley, Boris Bacrynkyj (2320), Philadelphia, Pennsylvania, and William Batchelder (2308), Laguna Beach, 3½-3½.

35 Ke3, Nxa2; 36 Ra1, b3; 37 Kd2, Kf7; 38 Bf1, Rc8; 39 Bd3, Rc5; 40 d6, Ke8; 41 g5, Rd5; 42 Ke3, b2; 43 Rg1

"CORNELIUS IS THE MOST CONSISTENTLY UNDER-RATED PLAYER IN THE BAY AREA."

Here several kibitzers were trying simultaneously to demonstrate the win to each other on their pocket sets. One remarked snidely, "If he can find it." Cornelius is the most consistently under-rated player in the Bay Area. His wins are always being discounted, while his losses are being taken for granted. This game shows much more understanding of the whole game of chess than would a lot of brilliancies.

43...Rxd3+; 44 Kxd3, Nc1+; 45 Resigns.



Paul Cornelius
(Photo by Alan Benson)



The man who wins a tournament does not always produce the best chess, but Walter Browne produced chess a class above his rivals, and earned a special award for the highest quality set of games.

"THIS BREVITY WILL GO ROUND THE WORLD FOR ITS QUEEN SACRIFICE . . ."

Two of his marvelous games sparkle with aggressive ideas. This brevity will go round the world for its queen sacrifice, but it is the imaginative play in the opening which prepares the "shot heard round the world."

English Opening

White: Yasser Seirawan
Black: GM Walter Browne

(My notes for this game are based on notes provided by Browne.)

1 c4, e5; 2 Nc3, Nc6; 3 Nf3, f5; 4 d4, e4; 5 Ng5, h6!; 6 Nh3, g5.

Browne's new recipe for this line is to drive the knight out of play and exert pressure on the dark center squares. The simple 7 e3, Nf6; 8 Be2, Bg7; 9 Bh5+, Nxf5; 10 Qxh5+, Kf8 is fine for Black.

7 f3, ef; 8 ef.

Also possible was 8 gf, Bg7; 9e3! Both sides then experience difficulties harmonizing their pieces.

8...Bg7; 9 d5? (Be3!), Qe7+; 10 Kd2.

"A LONG WALK ON A SHORT PIER."

Better to be slightly inferior after 10 Be2, Nd4; 11 O-O, Nxe2+; 12 Qxe2, Qxe2; 13 Nxe2 when the center may be vulnerable for White. Instead, Seirawan starts his king on a long walk on a short pier.

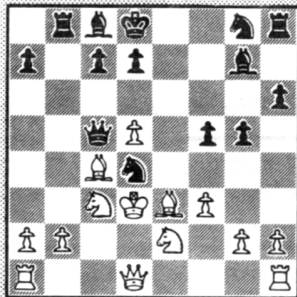
10...Nd4; 11 Bd3, Kd8; 12 Ng1, b5!

This is a developing move which also attacks the center. Black has better than a pawn's worth of compensation after 13 cb, a6; 14 ba, Bxa6.

13 Nge2, bc; 14 Bxc4, Qc5.

Now the main line was 15 b3, Ba6!; 16 Bxa6, Nxe2; 17 Kxe2, Qxc3; 18 Rb1, Qa5--with Black definitely better.

15 Kd3?, Rb8; 16 Be3?



16...Qxc4+!; 17 Kxc4, Ba6+; 18 Nb5, Nxb5; 19 Resigns.

Two nice mates are: (a) 19 Qa4, Na3+; 20 Kc5, d6+; 21 Kc6, Ne7,

and (b) 19 Nd4, Nxd4+; 20 Kc3, Ne2+; 21 Kd2, Rxb2+; 22 Ke1, Bc3+; 23 Kf2, Nf4+; 24 Kg1, Rxc2.



Walter Browne, during his mustache period. (Shorman photo.)

"GET SHARP WITH BROWNE; BROWNE GETS SHARP WITH YOU."

David Strauss, the perfectly-mannered Briton from Los Angeles, spent the tournament spreading sunlight and compliments among the contestants. Successfully terrorizing most opponents encouraged him to play some home analysis against Browne on the seventh move of their game. But get sharp with Browne; Browne gets sharp with you. This game is full of chess, mostly Browne's.

Gruenfeld Defense

White: GM Walter Browne
Black: David Strauss

(Again, my notes are based on the notes provided by Browne.)

1 d4, Nf6; 2 c4, g6; 3 Nc3, d5; 4 Nf3, Bg7; 5 Bg5, dc; 6 e4, c5; 7 Bxc4, Qa5?!; 8 e5!, Ng4.

He does not want to help White to combine by 8...Ne4; 9 O-O, Nxc5; 10 Nxc5, O-O; 11 Qb3, e6; 12 d5.

9 O-O, cd; 10 Nd5, Nc6.

"DIAGRAM Please!!", Walter exhorts. And here it is:



11 b4!, Qd8; 12 b5, Be6.

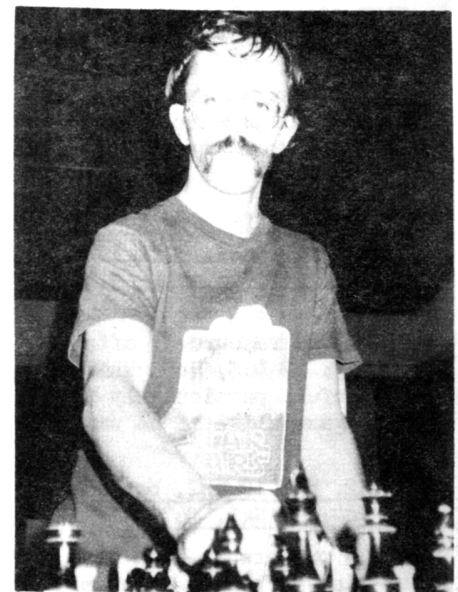
What makes this game so hair-raising is that, once Black can safely take White's e-pawn, he must be winning; but 12...Nxc5; 13 Bxe7 and (I.) 13...Qd7; 14 Re1 wins, (II.) 13...Qa5; 14 Nxd4!, Nxc4; 15 Nb3, Qa4; 16 Nb6 wins the queen. The tactical mortar shells Brown lobbed into Black's camp keep the e-pawn safe until it is too late for the Black troops to exploit its fall.

13 bc, Bxd5; 14 c7, Qd7; 15 Bxd5, Qxd5; 16 Rc1, Rc8; 17 Qa4+, Qd7; 18 Qxd7+, Kxd7; 19 Rfd1, Nxe5; 20 Nxd4, Ke8; 21 f4, h6; 22 Bh4, g5; 23 Nf5, Rg8?

The most resourceful was 23...Bf8 but Browne gives 24 fe, gh; 25 Nc Bg7; 26 Re1, a6; 27 Nf5, Rg8; 28 e6!--crushing all resistance.

24 fe, gh; 25 Rd8+, Rxd8; 26 c8(Q), Resigns.

□ □ □



Dennis Fritzinger prepares a landing from outer space. (Photo by Shorman)

Dennis Fritzingler handles the Philidor-Hanham Formation for Black in a very special way. Twice he has tried it, and twice the results have been brilliant. This time we have to ask, was it sound? He termed it an "off the wall" sacrifice. But it won the brilliantly prize.

The first eight moves constitute the Fritzingler maneuver, with which he produced a fine brilliancy in the related variation (1 e4, e5; 2 Nf3, d6; 3 d4, Nf6; 4 Nc3, Nbd7; 5 Bc4, Be7; 6 O-O, O-O; 7 a4, c6; 8 Bb3?, Qe8!) of deFirmian--Fritzingler, Paul Masson, 1977 (Chess Voice, Apr/May, 1978, page 34.)

"WHY NOT THE FRITZIDOR DEFENSE?"

Rumor has it that he is preparing an openings pamphlet titled: "Why Not the Fritzidor Defense?"

On Lindsay's 14th move, he tempts Black to sacrifice. Like

Oscar Wilde, Fritzingler can resist everything but temptation. He grabs the f-pawn, and the game is at the cross-roads.

Lindsay plays an inferior move and goes on to lose. But what if he had played the correct move? Would the sacrifice have been sound then?

It is fitting to end an account of the CalChess Masters Open on a tentative note. The lure of chess is the unknown, the new idea. All these fine players risked much to try out their new ideas on each other. We could all profitably emulate their love of adventure and their love of chess--as well as their sportsmanship.



Editor's note:

The Lindsay-Fritzingler prize-winning game was annotated by Fritzingler for Richard Shorman's chess column, and these notes appear below. The key analysis

occurs in note "(d)". But a full line of type disappeared in printing where the star is shown.

This missing line reads: "(Or 18 Kh1, Ne1.) 18...ef 19 Nf3 Be3 20 Kh1 Qh5 21 Re3 Bh3, with an attack, e.g., 22 Nh2 Rf1 . . ."

Since these early notes, Fritzingler has done some further study and come up with an even better line. This second set of notes will appear in full in the Winter 1978-79 issue of the Professional Chess Association Newsletter. (Copies available from Max Burkett.)

The PCA Newsletter has kindly granted permission to print here the updated analysis of the key line:

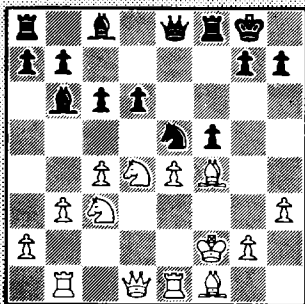
"The only move worth playing is 16 Kg1, to which Black would respond 16...g5, with the following possibilities: (a) 17 Bg5?, Qg6 18 Bc1?, Bd4+ or 18 Be3, f4 19 Bf2, Bh3; (b) 17 Be3, f4 18 Bf2, g4; and finally (c) 17 Bc1!, f4 18 Kh1, g4--with a pawn for the piece and an enduring attack."

1 Nf3	d6	14 h3!?	Nf2!!(c)
2 d4	Nf6	15 Kf2	f5
3 c4	Nbd7	16 e7!(d)	Bf5(e)
4 Nc3	e5	17 Rf1	Bd3!(f)
5 e4	Be7	18 g8(g)	Bd4!(h)
6 Be2	O-O	19 Kg2	Rf4
7 O-O	Qe8	20 Bd3(l)	Rf2
8 Re1	Bd8	21 Kh1	Qd7!(j)
9 Bf1	c6	22 g4	Raf8(k)
10 Rb1	Bb6	23 Bh7	Kh7
11 b3(a)	ed	24 Qd4	Rh2!
12 Nd4	Ng4(b)	25 Resigns(1)	
13 Bf4	Nde5		

(Notes contributed by USCF master Dennis Fritzingler)

- (a) Either 11 b4 or 11 Na4 could have been played here.
- (b) And not 12... Qe5 13 Nf3!, when 13... Qc3? is punished by 14 Bd2.
- (c) Perhaps objectively unsound, this intuitive sacrifice creates great difficulties for White.
- (d) Already White goes astray. Also no good was 16 Kg3 g5! 17 Bc1 (if 17 Bg5, then 17... Qg6.) Nd3! 18 Nf3 (Both 18 Qd3 and 18 Bd3 fail against 18... Qe5.) Bf2 19 Kh2 Ne1 20 Ne1 Qe5 21 Kh1 fe! (Avoiding 21... Qc3? 22 Qd6!, which gives White a

Old Indian Defense
 White: Fred Lindsay
 Black: Dennis Fritzingler
 (Brilliantly prize)



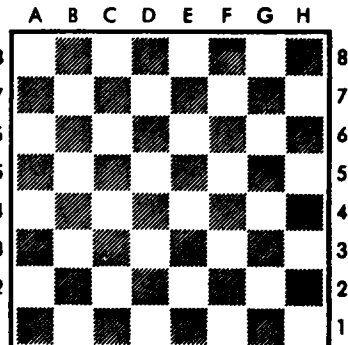
After Black's 15th move.

fantastic game.) The only move worth playing is 16 Kg1! fe17 Be3, and now he 17... Bb3 nor 17... Qg6 gets Black anywhere, but 17... Nf3! is interesting: 18 gf (Or 18 Kh1) 22 Nh2 Rf1 23 Nf1 Bg4 or 22 Bb3 Qb3 23 Kg1 Qg3. Best in this line (after 17... Nf3!) appears to be 18 Nf3! ef 19 Bb6 Qg6 20 Kh1 (On 20 Bf2 follows 20... Bh3.), after which Black may try either 20... fg 21 Bg2 ab or play 20... ab right away, giving back a pawn in return for slightly better attacking chances.

- (e) On the rook, a simple yet important point that gains the necessary time for Black to proceed with larger designs.
- (f) An interference move, found frequently in compositions but only occasionally in real games.
- (g) Naturally, not 18 Bd3 (or 18 Re5) Rf4 19 Kg1 Rd4.
- (h) Amazingly enough, the fastest way to win. After the game I was kicking myself for missing 18... Rf4, since on 19 gf White gets mated with 19... Bd4 20 Re3 (Else 20 Kg2 Qg6) Ng4 21 Qg4 Qe3, etc. However, it turns out that 18... Rf4 is answered by 19 Kg2 Rd4 20 Bd3 Rd3, whereupon White replies 21 Re5! and the game slows down quite a bit.
- (i) White still cannot take the rook, and 20 Re5 is hopeless due to 20... Rf2 and 21... Qe5.
- (j) Threatening mate.
- (k) Now if 23 Be4, as expected, Black plays 23... Qd8! 24 Qd4 Qh4 25 Bg2 (Or 25 Re3 Rf3 26 Rf3 Nf3 27 Qf2 Qh3.) Nf3 26 Qd3 Qh3!
- (l) This game was awarded the brilliancy prize.

White: Jay Whitehead (2331). Black: John Grefo (2457). CalChess Masters' Open, U.C. Berkeley, Jan. 11, 1979. Sicilian Defense 1 e4 c5 2 Nf3 d6 3 d4 Nf6 4 Nc3 ed 5 Nd4 e6 6 Bg5 Nc6 7 f4 Ng4 8 Nd5 h6 9 Bh4 g5 10 fg Bg7 11 Nf5 Bf5 12 ef hg 13 Qg4 Rh4 14 Qg5 Qe5 15 c3 Re4 16 Ne3 Qb6 17 Qg7 Qe3 18 Kd1 Qe1 19 Kc2 Qf2 20 Kb3 Qb6 21 Kc2 Rc8 22 Kc1 Re5 23 Qg8 Kd7 24 Qf7 Nd4 25 Kb1 Rf5 26 Qg6 Rf2 27 Qg4 e6 28 Qg7 Kd8 29 Qh8 Kd7 30 Qh7 Ke8 31 Qh5 Kd7 32 Drawn.

White: Robert Salgado (2297). Black: Fred Lindsay (2331). CalChess Masters' Open, U.C. Berkeley, Jan. 14, 1979. Blackmar-Diemer Gambit 1 d4 Nf6 2 Nc3 d5 3 e4 f5 ef 5 Nf3 c5 6 Bf4 ed 7 Nd4 e6 8 Bd3 g6 9 Qd2 Bg7 10 O-O O-O 11 Be4 Qh6 12 h3 Qc5 13 Bb3 e5 14



Ne4 Qe7 15 Bh2 b5 16 Nc3 Bb7 17 Qg5 Nbd7 18 Nf3 Re8 19 Rhe1 b4 20 Ne5 bc 21 Nd7 Re1 22 Bc7 cb 23 Kb2 Ne4 24 Ke3 Rd1 25 Qe7 Rf1 26 Qb4 Bc6 27 Qc4 Bb5 28 Qe4 Bd7 29 Qd3 Bb5 30 c4 Rc1 31 Bd6 Rd8 32 cb Rd6 33 Qd6 Bf8 34 Qf8 Kf8 35 ba Rc6 36 Resign.

White: Paul Whitehead (2385). Black: Rajan Ayyer (2223). CalChess Masters' Open, U.C. Berkeley, Jan. 12, 1979. Sicilian-Defense 1 e4 c5 2 Nf3 d6 3 d4 ce 4 Nd4 Nf6 5 Nc3 e6 6 Be2 e5 7 Nb3 Be7 8 O-O Qc7 9 e4 b6 10 f4 Be6 11 Be3 Nbd7 12 Kh1 O-O 13 f5 Bc4 14 Bc4 Qe4 15 Qf3 Rf8 16 g4 d5 17 Nd2 Qb4 18 g5 Ne4 19 Nd5 Nd2 20 Bd2 Qd6 21 Bb4 Nc5 22 Bc5 Qe5 23 f6 e4 24 Qe4 Bd6 25 fg Kg7 26 b4 Qc6 27 Reel Ra7 28 Rf6 Rd7 29 Rh6 Resigns.

CalChess NEWS

NORTHERN CALIFORNIA CHESS ASSOCIATION

USCF STAFF DIRECTOR VISITS CALCHESS

The CalChess Board of Directors met on February 12 at Bryce Perry's home in Palo Alto. In attendance were Directors Muollo, Larkins, Perry, Goodall, Hamaker, Benson, Poschmann, Marks, and Fauber, and visitors Summares, Morrison, and Meyerson.

Richard Meyerson is the newly-appointed Staff Director of the USCF, the position previously occupied by Martin E. Morrison. Meyerson came direct from the USCF Policy Board meetings in Los Angeles to visit relatives in Palo Alto and exchange views with the CalChess directors.

Meyerson gave a brief review of the Policy Board meeting, noting that the Board spent much of its time discussing what priorities to adopt in the light of the USCF's strained finances.

The new Staff Director will concentrate on raising funds from sources outside the USCF membership. Spending on masters' affairs will hinge on the availability of such funds, with the Interzonals getting top priority.

Ratings delay

The February Rating Supplement is scheduled for distribution in early March. The USCF has purchased a new computer which should be "on line" in July. But the company which provides its present computer services is going out of business at the end of February--and there will be a lag of several months of delayed ratings during the changeover.

Meyerson and the CalChess directors engaged in a frank and wide-ranging discussion of USCF practices and policies and the future of chess in America. Among the topics touched on were: recruiting (Is an introductory half-membership possible?), publicity (Could support of grandmaster "stars" attract more people to chess?), ratings (Can the bi-monthly "unofficial" ratings be made official? Can the ratings process be made simpler, cheaper, and quicker?), and long-term goals (Is the USCF a tournament-players' organization? Or should it also seek to serve the larger group of more casual players?).

Prior to this, the CalChess Board completed an abbreviated agenda of brief reports on: scholastic chess, past tournaments (the Masters' Open), present tournaments (the Northern Calif. Championship), and future tournaments (CalChess Teams Championship, Paul Masson, Golden Gate).

The next CalChess Board meeting will be held at John Larkins' home in Oakland on March 20, at 7:30pm.



RICHARD MEYERSON

What do Spassky, Ivkov, Andersson, Romanishin, Tarjan, Quinteros and the winning Hungarian team at the '78 Olympiad in Buenos Aires have in common? They all buy:

INTERNATIONAL CHESS BULLETINS

"Informator is for masters, but International Chess Bulletins are for Grandmasters!"

Send 15¢ stamp for price list of 28 recent tourneys to: Walter Browne, 8 Parnassus Road, Berkeley, CA 94708.

CHESS BOOKS

Hundreds of titles. Send for complete list. Compare our prices.

INFORMANT #25 \$12.50

ECO-4 (1d4/Indians) Hardbound . \$22.00

Top prices paid for used books, equip.

Postage paid on orders of \$10 or more. (Under \$10, add 50¢.) Calif. residents add 6½% sales tax.

Max Burkett, 1009 MacArthur (#6), Oakland, CA 94610.

NEW & RECENT CHESS BOOKS

OUR SPECIALTY FOR OVER 8 YEARS

Complete set of lists on Openings, Biographies, Middle & Endgame, and General Chess Works.

Over 36 pages of titles and descriptions!

Average price is 15% off of retail!!

Just send us 3 - 15¢ stamps and we'll send them out the same day.

• • •

Subscribe to the most unusual chess publication around — **The Chess Atlas**, \$10/yr.

Or get the scholarly **Lasker & His Contemporaries** for \$10/2 issues.

• • •

New Titles Published by us:

EXPLORING THE CHESS OPENINGS — Myers, \$7.95

REVERSED KING PAWNS: MENGARINI'S OPENING — Myers, \$3.75

• • •

CHESSCO

423 Brady St. — DAVENPORT, IOWA 52801
(319) 323-7117

NORTHERN CALIFORNIA STATE CHAMPIONSHIP

The annual Bagby Memorial Northern California Championships are now under way at the Mechanics' Institute Chess Club in San Francisco.

At the half-way point (after round 4) the standings were:

1 Jay Whitehead (2331)	4-0
2 Dennis Fritzing (2296)	3-1
3 George Kane (2376)	2½-1½
4-5 Craig Barnes (2245)	2-2
4-5 David Blohm (2220)	2-2
6-7 Richard Lobo (2375)	1-3
6-7 Rajan Ayyar (2223)	1-3
8 Harry Radke (2256)	½-3½

Meanwhile, the Southern California Championship is also under way in Los Angeles. At last report, Jerry Hanken was leading.

A match between the two half-state champions is a possibility.



Chess Clubs

"PLACES TO PLAY" RETURNS

On the back cover of this issue will be found a listing of "Places To Play in Northern California". This feature regularly appeared in Chess Voice from April 1975 through April 1978, but has been missing from the last four issues.

The list was dropped for two reasons: (1) A number of chess clubs ceased to function when local recreation departments, in the wake of Proposition 13, started charging rent for facilities that had previously been free, and (2) About half the listings were based on information more than a year old, which might or might not still be true.

The present list is an attempt to start over again to build a complete and accurate listing of every place in Northern California where chess is regularly played. It is undoubtedly incomplete and may, in some cases, contain dated information. But it represents the editor's current knowledge. The correction and expansion of this list requires the help of Chess Voice readers. If you know of any group that should be listed, bring pressure to bear on the appropriate official to let the editor know.

To be listed, it is not necessary to be affiliated with CalChess or the USCF. Any place where people regularly gather to play chess (for example, coffee houses with a weekly chess night) is eligible. The only groups excluded will be those that do not meet regularly, or are not open to the public.

The list does not constitute advertising and there is no charge to be listed. This is a free CalChess service for the benefit of the Northern California Chess Community--especially useful to those newcomers who are looking for a place to play.

Starting with the next issue, a more complete set of information will be printed. What is needed from each club is the following:

- (1) The group's name,
- (2) What day(s) it meets,
- (3) When it meets ("From ___ to ___ AM/PM), Where

it meets (the address and how to find it), (4) Who to contact for further information, and (5) That person's phone number (preferable) or address.

Help!

The accuracy and completeness of such a list depends entirely on the extent to which concerned parties give the editor enough information to keep it up to date. Chess clubs are constantly coming into being, dropping out of existence, changing their officers or meeting places. Some club officials understand the value to their club of such a list and responsibly keep the editor informed of changes. Most do not. Consequently the readers of Chess Voice can perform a valuable service to their own club and to the chess community at large by monitoring this list and writing in about any necessary additions, deletions or changes.

□ □ □

DISCOVERY BAY. A new club is being formed at Discovery Bay in Byron. (This is in eastern Contra Costa county near Stockton.) Details are still being worked out, but those who are interested should contact Ed Marnell, Rt. 1, Box D-299, Byron CA 94514. As soon as Ed hears from enough people to form a club, he will start one. His phone number is (415) 634-2721.

SAN ANSELMO. The Ross Valley Chess Club no longer meets at the Robson-Harrington House. Its new meeting place is the office of the San Anselmo Parks & Recreation Dept, 1000 Sir Francis Drake Blvd. The club meets on Tuesday nights at 7PM.

SAN FRANCISCO. Players who remember the Fiddlers' Green Chess Club of 1976 will be interested to learn that Peter Andrews is again starting weekly speed chess tournaments with guaranteed prizes. They will be held every Thursday night at the Cortland Corners coffee house at 301 Cortland (at Bocana). This is in Bernal Heights, near Balboa Park. The prizes are listed as starting with a minimum of \$50 (2-8 entries) and going up to \$250 with 25 or more entries. The entry fees are graduated according to when you sign up. The first 5 players pay \$4.00 each, the sixth through tenth to entry pay \$5.00, and so on. For further information, call (415) 647-9774.

FREMONT. The Fremont Chess Club, after its recent reorganization, is meeting every 2nd and 4th Thursday in the Ohlone Room of the San Francisco Federal Savings building on Fremont Blvd. and Mowry Avenue. The club championship will start on March 8.

BERKELEY. The Berkeley Chess Club's Dec/Jan tournament had 50 entries. The Premiere section saw a tie for first place between Mike Padovani (1845) and Paul Hope (1610)--each with 4 points. Mark Paetz (1788) was third. The Booster section (1400-1649) was won by Alan Glasscoe (1633) with 4½ points. Dorr Lovett (unrated) took second with 4 points. And Henry Mar (1478) took third with 3. In the Reserve section Robert Solovay (1173) took first place with 3 points. Richard Sherman (1386) and Daniel Sosnoski (unrated) tied for 2nd-3rd with 2½ points each.

The club is now engaged in its annual Qualifying Open to determine which six players will vie for the club championship. The April/May tourney will begin on May 4th.

FREE CORRESPONDENCE CHESS COURSE

FIVE LESSONS - CERTIFICATE AWARD

This is the second lesson of the series, continued from the September issue. The course is FREE, and a certificate will be awarded to each individual upon successful completion of all five lessons.

One method of developing the critical faculty is to annotate games and, for Lesson Two, I have selected a few games with tactical and positional possibilities, even if overlooked or not played. The algebraic code is used when discussing squares (see small diagram).

After every few moves or so is a numbered open bracket - which is in place of one of the annotations at the end of the lesson. Each annotation is used only once. Your assignment is to select the best annotation for each bracket.

When you have finished, copy the numbers and matching letters onto a postcard or sheet of paper, write or print "Lesson Two" and mail to:

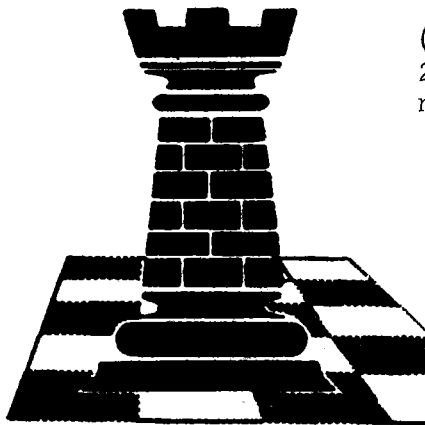
CHESS VOICE

5804 OCEAN VIEW DRIVE
OAKLAND, CALIF. 94618

The names of those who pass (minimum of 18 correct out of 24) will be published in the next issue of Chess Voice.

LESSON TWO -

ANNOTATION OF CHESS GAMES



Game #1

White: Janosëvic
Black: Baretic

Jugoslavia 1977
VIENNA GAMBIT

1. P-K4 P-K4
2. N-QB3 N-KB3
3. P-B4 P-Q4
4. BPxP NxP
1. ()
5. N-B3 B-K2
6. Q-K2 NxN
7. QPxN
2. ()
7. ... 0-0
8. B-B4 P-QB4
9. 0-0-0
3. ()
9. ... Q-R4
10. K-N1 N-B3
4. ()
11. Q-K1 B-K3
12. Q-N3 P-Q5
13. P-B4 KR-K1
5. ()
14. P-QR3 P-QR3
15. B-Q3 P-QN4
16. N-N5 BxN
17. BxB NxP1
6. ()
18. QxN PxP1
19. BxP+ KxB
20. RxP?
7. ()
20. ... B-N5
21. B-K7 RxB1
22. QxR PxR
23. Q-K4+ B-B41
8. ()
24. QxR Q-Q7
25. Q-Q8 QxP+
26. K-R1 P-B6
27. Q-R4+
9. ()
27. ... K-N3
28. Q-N3+ K-R4
29. Q-B3+ K-R3
30. Q-B4+ P-N4
31. Q-QB1 QxKNP
10. ()
32. R-Q1 B-K3
33. P-KR4 PxP+
34. QxP QxQ+
35. KxQ PxP
36. RxP K-N4
37. K-B3 P-R6
38. R-Q8 B-N5

0-1

Game #2

White: Boris Spassky

Black: Jan Timman

Amsterdam 1977
GRUENFELD, EXCHANGE

1. P-Q4 N-KB3
2. P-QB4 P-KN3
3. N-QB3 P-Q4
4. PxP NxP
5. P-K4
11. ()
5. ... NxN
6. PxN B-N2
7. B-QB4 0-0
8. N-K2
12. ()
8. ... P-N3
13. ()
9. P-KR4! N-B3
10. B-Q5 Q-Q2
11. P-R5 B-QR3
12. PxP PxP
14. ()
13. N-B4
15. ()
13. ... P-K3
14. Q-N4 KR-Q1
15. BxP1 PxB
16. QxNP B-B5
16. ()
17. Q-R7+ K-B2
18. N-R5 R-KN1
19. R-R3 QR-KB1
20. NxB1
17. ()
20. ... R-KR1
21. R-B3+ K-K2
22. B-R3+ N-N5
23. BxN+ P-B4
24. PxP RxQ
25. PxP+

1-0
18. ()

Game #3

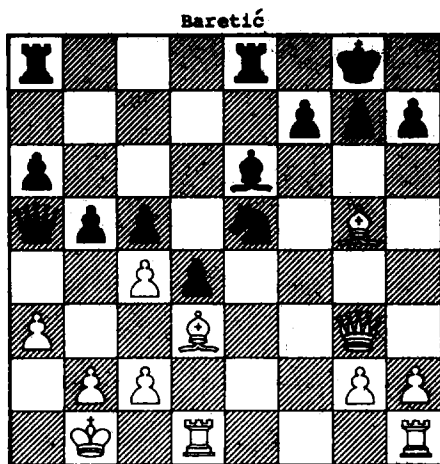
White: Robert A. Karch
Black: Samuel J. Swaim Jr

Okinawa 1971

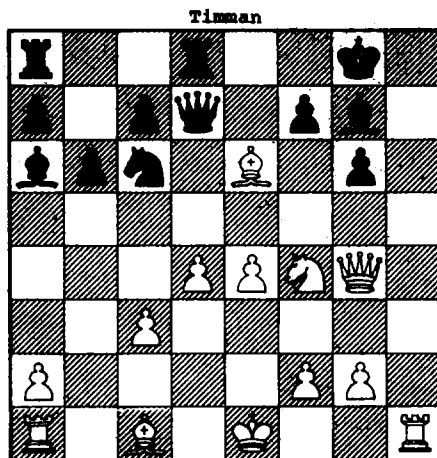
SICILIAN DEFENSE

1. P-K4 P-QB4.
2. N-KB3 P-Q3
3. P-Q4 PxP
4. NxP N-KB3
5. N-QB3 P-QR3
6. B-K2 P-K4
7. N-N3 B-K2
8. 0-0 B-K3
9. B-K3 P-Q4
19. ()
10. NxP NxN
11. PxN QxP
12. N-B5
20. ()
12. ... BxN
13. QxQ BxQ
14. BxB N-Q2
21. ()
15. B-Q6 R-QB1
16. P-QB3
22. ()
16. ... R-B3
17. B-R3 R-KN3
18. P-B3 P-KR4
19. KR-Q1 B-B3
20. R-Q6 RxR
21. BxR P-B4
22. B-B4 N-N3
23. B-N3 P-K5
24. R-Q11 PxP
25. B-QB7 N-Q2
26. R-K1+ B-K5
23. ()
27. PxP N-B3
28. PxB K-Q2
29. P-K5 N-K5
30. B-N6 R-R3
31. R-Q1+ K-K1
32. R-Q8+ K-K2
33. P-K6 N-B4
34. BxN+ KxR
35. P-QR4 P-KN4
36. P-R5 R-R2
37. P-K7+ RxP
38. BxR+ KxB
39. B-Q5

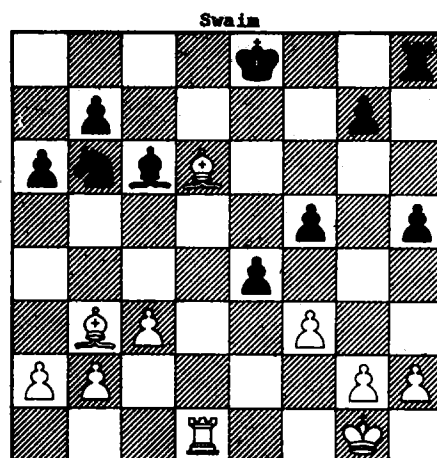
1-0
24. ()



Janosevic
Position after 17...NxP1



Spasnyk
Position after 15. BxP1



Karch
Position after 24. R-Q11

Solutions to "Annotation of Chess Games"

- A. If Black now leaves his Queen on the d-file White could use a pin to slightly improve his position. For example 9...N-B3? 10. P-B4 P-Q5 11. Q-K4.
- B. Both sides are poised for attack against the opposing King, and it is unclear who can get there first. But if an immediate 13...P-QN4? White would win a Rook after 14. B-R6 (due to the mate threat).
- C. White is somewhat exposed on the Kingside. 5. P-Q3? would lose a pawn after 5...Q-R5+ 6. P-N3 NxP 7. N-B3 Q-R4 8. R-KN1 NxB.
- D. White's only hope is for a draw by perpetual check.
- E. Black gives up his Rook to mobilize the Bishop and gain time for the attack. Note that the Black King (after QxR) cannot be checked for several moves.
- F. Without a White Knight on c3, Black would not have the option of exchanging Knights but would have to retreat. In some openings, White delays the development of his Queen Knight to avoid this exchange.
- G. White opens a diagonal for his Queen Bishop and the d-file for the Rook.
- H. If now ...RxN 21. R-B3+ K-K1 22. RxR+ KxR 23. B-R6 with threat of 24. Q-R8+ and White wins the Rook. This type of chasing attack is sometimes called a King-Hunt.
- I. Black's f7 pawn is pinned, which makes his g6 pawn temporarily vulnerable. Also, White's Rook dominates the opened h-file. These two factors plus White's easy mobility for the development of his Queen, Knight, and Queen Bishop collectively give White a strong Kingside initiative.
- J. The capture opens the e-file for the Black King Rook. The tactical theme is the potential ambush (discovered attack) against the White Queen, if she captures the Knight.

- K. White misses the attacking idea 16. P-QB4! BxBP 17. BxB RxB 18. QR-B1, the point being Black's vulnerability on his back rank.
- L. White threatens B-KB3 which would at least win the b7-pawn.
- M. The Black Queen Pawn would be no free gift. If White captures RxP, Black develops his Queen Bishop and next move captures the a2-pawn with check.
- N. This is a seemingly aggressive attacking move but the White Bishop, being ultimately forced back, remains on the a3-f8 diagonal, and that prevents Black from Kingside castling.
- O. Black's Queenside pawns are trapped on the same color squares as the White Bishop.
- P. Routine moves for White in this position are 0-0 and B-K3, which provide King safety and prepare for operations in the center.
- Q. Of course, if Black takes the Rook he loses his Queen. But, see note 6, added to which White's first rank has now been weakened and these two vulnerabilities give the Black attack an extra burst of energy. Better for White was Q-N3.
- R. If ...Q-B2? White would make a deflection Rook sacrifice on h8, and then capture QxQ.
- S. Black's central pawn advance, which opens up the position and is considered a normal equalizing, freeing move in the Sicilian defense, is here premature because the White King has castled into comparative safety and the Black King has not.
- T. Black missed 31...QxQ+ 32. RxQ P-B7 followed by an advance of the Queen pawn.
- U. If 25...Q-Q3 26. BxQ+ KxB 27. RxR R-R8+ 28. K-Q2 RxR 29. P-N7 and Black must sacrifice his Rook against the future Queen.
- V. If ...K-B1? White mates next move.
- W. The threat is NxKNP.
- X. Placing the Knight on e2 is intended to avoid a possible pin by ...B-KN5, against which move White could now interpose P-KB3.

This course was originally published in Northwest Chess.

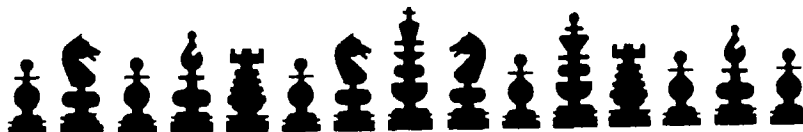
The following readers got a perfect score on Lesson One-"Basic Chess Tactics":

Michael Brent, Stockton
Rey Castro, San Jose
Thomas Chassereau, Oakland

Leo Connelly, Berkeley
John Demo, Napa
Kevin Dyke, Hayward
Michael Hartnett, San Rafael
Albert Hernandez, Castle AFB
Ray Howard, Oakland
Art Marthinson, San Rafael

Rob McCarter, Santa Rosa
Hector McDonald, San Leandro
Dick Rowe, Chico
Larry Rydel, Monterey
Charles Schulken, Treasure Island
Mark Slaton, Sunnyvale
Barry Stelling, Sonoma
Nelson Turner, Modesto
Alan Yaffe, San Francisco

Games



Reprinted from Richard Shorman's chess column in the Hayward Daily Review.

TAL'S SCHOOL OF ATTACK

Here is an excellent example of how the attack against the Caro-Kann Defense must be conducted. Tal's every move contains a threat and drains blood and strength from his opponent like a vampire. True, where there's an attack, there's defense also. But Tal is able to pose difficult and complicated problems such that the possibility of the opponent finding a wrong solution is too great.

White: Mikhail Tal.
Moscow, 1967.
Caro-Kann Defense

Black: Miroslav Filip.

1 e4	c6(a)	13 Ne5	Rd8(l)
2 d4	d5	16 Ne4(k)	Ne4
3 Nc3	de	17 Be4	Bc8(l)
4 Ne4	Nd7	18 Qh5(m)	Ng6(n)
5 Nf3(b)	Ngf6	19 Nf7(o)	Kf7
6 Ng3(c)	e6	20 Qh7	e5(p)
7 Bd3	Be7	21 Rd8	Rd8
8 Qe2(d)	c5	22 Qh5(q)	Qe6(r)
9 0-0(e)	0-0	23 h3(s)	Bc5(t)
10 Rd1	cd(f)	24 Kh1(u)	Bd4(v)
11 Nd4	Re8	25 Rd1	Rd6(w)
12 b3(g)	Qb6	26 Be3	Re6(x)
13 Bb2	Nf8(h)	27 Rd4!	Resigns(y)
14 Nf3(i)	Bd7		

(Introductory remarks and annotations by international grandmaster Petar Trifunovic, edited from "Chess Review", Oct. 1967, pp.315-16).

(a) Dr. Filip is a noted expert in the Caro-Kann. Even for him, however, it is inadvisable to adopt it against the king of attack.

(b) Tal's return to the old way tends to confirm that 5 Bc4 Ngf6 6 Ng5 e6 may not be so efficacious for White as was once thought.

(c) The only move that poses Black the problem of equalizing. All other replies have already been solved in opening theory.

(d) White prepares 9 Bd2 or 9 Bg5 and 10 0-0-0.

(e) But now Tal changes his mind, having found that 9 Bd2 Qb6 is too slow for him.

(f) This trade has been criticized as premature. However, White stands better after the recommended line 10... Qc7 11 c4 (threatening 12 d5) cd 12 Nd4 Nc5 13 Bc2.

(g) A second bishop gets ready to line up against Black's king.

(h) Playing 13... Nc5 to eliminate one of the white bishops fails in the face of 14 Bc4! Na4? 15 ba Qb2 16 Nb5, with the double threat of 17 Rab1 and 17 Nc7.

(i) Shifting the knight to much more dangerous position on e5.

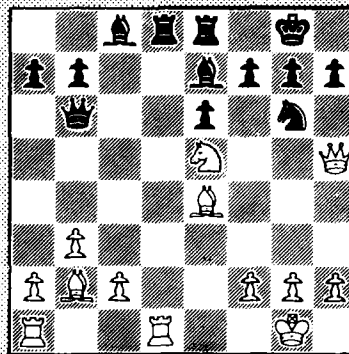
(j) Black has placed his pieces well and now prepares the principal strategy of the Caro-Kann, to trade down pieces after... Bc8.

(k) Also good is 16 Nh5 Bc8 17 Nf6 Bf6 18 Nc4 Qc7 19 Bf6 gf, etc., but Tal means to make more of the position and therefore shuns a tiresome, though favorable, endgame.

(l) Against Tal this retreat represents a threat to exchange off both of his rooks by 18... Rd1 and 19... Rd8.

(m) Seems very simple, but it is surprising how dangerous this move really is.

(n) The only adequate defense. On 18... g6 White wins with 19 Ng4 (threatening 20 Nh6mate) f6 20 Bf6!, or if 18... f6 instead, then 19 Bh7! Nh7 20 Qf7 Kh8 21 Ng6mate. But now how does White continue? Many masters would cease playing for a win here, as everything is defended, but not Tal! He finds a way to pose one problem more.



(o) This combination is probably only good enough for a draw, but Black must prove it!

(p) Again, everything is defended.

(q) Threatening 23 Be5 and forestalling 22... Qf6 due to 23 f4! Rh8 24 Bg6 Kg6 25 Qe5, etc.

(r) Black, who has struggled to find 22 defendings moves, seems to have forgotten about attacking moves. He might have saved himself with 22... Rd2 23 Rf1 Bc5 24 Bc3 Rf2 25 Qg6 Qg6 26 Bg6 Kg6 27 Rf2 Bf5 28 Be5 Bc2, entering a drawish ending of opposite colored bishops, notwithstanding his loss of a pawn.

(s) White has time to prevent the intended 23... Qg4.

(t) He ought to guard his knight by 23... Rd6, then free his king by 24... Kf8. There are plenty of possibilities for both sides, but the chances favor White, who has two pawns for his knight and will win the pawn at e5. Tal gives the following variation as an example: 23... Rd6 24 Re1 Kf8 25 Re3 Nf4 26 Qe5 Qe5 27 Be5 Rd1 28 Kh2 Bd6 29 Bd6 Rd6 30 Rf3 Rf6 31 Rc3, whereafter White gains further material, enough for a win.

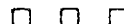
(u) Now White is ready for 25 f4.

(v) Black has become quite tired. He still has more chances with 24... Rd6 first.

(w) The simple pin break by 25... Bb6 leads into 26 Rd8 Bd8 27 f4!

(x) Or 26... Rd8 27 Rd3 and 28 Rf3, etc.

(y) After 27... ed (27... Ra3 28 Bd5!) 28 Bd5 Ra3 29 Qf5! Ke7 30 Be6 Be6 31 Qg6 all is clear.



White: Charles Brunton (1641). Black: Clarence Lehman (1730). Capital Open, Sacramento, Jan. 21, 1979. Max Lange Attack 1 e4 e5 2 Nf3 Nc6 3 Bc4 Nf6 4 0-0 Bc5 5 d4 Bd4 6 Nd4 Nd4 7 f4 Qe7 8 fe Qe5 9 Bf4 Qc5 10 Bf7! Kf7 11 Be3 Qc2 12 Qd4 d6 13 Nc3 Kg6 14 Rf6! gf 15 Rf1 Rf8 16 Nd5 f5 17 Ne7 Kf7 18 Nf5 Bf5 19 Rf5 Ke8 20 Rf8.Kf8 21 Qf6 Kg8 22 Qe6 Kg7 23 Bh6 Resigns.

White: Neil Regan (1855) Black: Ernest Curte (1789)
 Memorex Chess Club Fremont Chess Club
 CalChess Tournament of Club Champions, Fremont, Cal.
 10, 1978.

Benoni Counter Gambit

1 d4	Nf6	24 Be8	ef
2 c4	c5	25 Bf3(g)	fg
3 d5	b5	26 Kg3	Qc7
4 cb	e6	27 Kg2	Nf4
5 ba	Be6	28 Kf2	Nh3(h)
6 Nc3	g6	29 Kf1	Rd1
7 g3	d6	30 Rd1	Qg3
8 Bg2	Bg7	31 Bg2	Bb7
9 Nf3	O-O	32 Nd5(i)	Bd5
10 O-O	Nbd7	33 Rd5	Nf4
11 Re1	Qe5	34 Red2(j)	Ng2
12 e4	c4(a)	35 a4(k)	Nc3
13 Nd4	Nc5	36 Ke2	Nd5
14 Nc6	Qc7	37 a5	Nf4
15 Be3(b)	Nd3	38 Kd1	Nd3
16 Re2	Ng4	39 Kc2	Qe5
17 Bd4	Nge5	40 a6	Qb2
18 f4(c)	Nc6	41 Kd1	Qc1
19 Bg7	Kg7	42 Ka2	Qe1
20 dc	Qe6	43 Kf3	Qd2
21 h3(d)	Qc5	44 a7	Qf2
22 Kh2	Rfd8(e)	45 Ke4	e6
23 e5(f)	de	46 a8Q	f5mate

(Notes contributed by the winner)

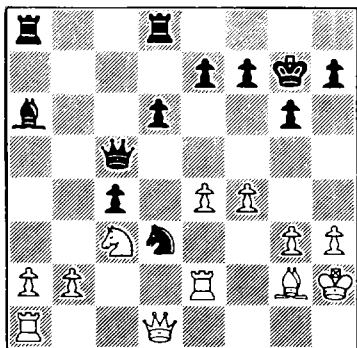
(a) The black knight on d3 will have a firmer base than its counterpart on c6.

(b) Black now stands better. White probably should have played 15 h3, which would have been met by 15... Nd3 and 16... Rfe8, with an edge for Black. On 15 Bf1, weakening the base of his knight on c6, Black responds with an eventual e6 and a gradual erosion of that post. If 15 Bg5, then simply 15... Rfe8.

(c) Not good, but 18 Be5 Be5 19 f4 Bg7 leaves Black threatening 20... Bb7, so that after 20 e5 de 21 fe Be5 22 Ne5 Ne5 23 d6 Qc5 24 Kf1 Rcd8 25 Qd5 Qd5 26 Bd5 ed Black maintains the advantage.

(d) The move 21 e5 is answered by 21... Qc5.

(e) Originally, I had written down 22... Rab8 on my score sheet, but then looked again and saw that White could play 23 Qa4, so I scratched it out. The move actually made was directed at keeping White's counterplay to a minimum.



(f) White can undertake little else; he expected 23... Qc5 in reply.

(g) Similar variations occur after 23 Bg2. Correct is 23 gf Ra8, which would be about equal. Note, too, that 23 Qh1 succumbs to 23... gf 24 Kg3 Qc7 25 Kxg3 Ra8 26 Qa2 Bb7 27 Kf1 Qc8, followed by 28... Ra8 or even 28... Ra5.

(h) Figuring that the knight in this position is stronger than the rook.

(i) Certainly not 32 Bb7 on account of 32... Qg1mate. Moves like 32 Rdd2 (32 Red2, 32 a4) lose to 32... Bg2 Bg2 Qf3 34 Ke1 Nf4, etc. Nor does 32 Ne4 help in view of 32... Be4, and 32 Bh3 fails against 32... Qh3 33 K-any Bf3.

(j) Here White loses less quickly with 34 Rdd3 Ne2.

(k) White should resign. The final position is pretty.

White: Renard Anderson (2017). Black: Paul Enright (2161). San Jose City College Open, Jan. 27, 1979. Sicilian Defense

1 e4	c5	13 Ne6l(f)	fe
2 Nf3	e6	14 Qe6	Qe7(g)
3 d4	cd	15 Rd6	Nc8(h)
4 Nd4	Nf6	16 Nd5l	Qe6(i)
5 Nc3	d6	17 Re6	Kf7(j)
6 g4(a)	a6	18 Bh3	Bd5
7 g5	Nfd7	19 ed	Bg7
8 Be3	b5	20 Rc6l(k)	Rd8
9 a3	Nb6(b)	21 Rc7	Ke8
10 Rg1	Bb7(c)	22 Re1	Ne7
11 Qg4l(d)	g6	23 d6(1)	Resigns
12 O-O-O	N8d7		

(Notes contributed by USCF expert Renard Anderson)

(a) In the Keres attack White's loose pawn structure is compensated by a spatial advantage, open lines and a number of target squares.

(b) On 9... Bb7 follows 10 Qg4! White unleashed an awesome ebullition in Fedorowicz—Petrosian ("Chess Life & Review," Apr. 1978, pg. 184), viz: 10... Nc6 11 O-O-0 Nce5 12 Qh3 g6 13 f4 Nc6 14 Rg1 Qc8 15 f5 Nc5 16 fe 17 Bb5!

(c) The continuation 10... N8d7 11 fj Bb7 12 f5 e5 13 Ne6 fe 14 Qh5 is excessively analyzed by Shamkovich in the Jan. '79 CL&R.

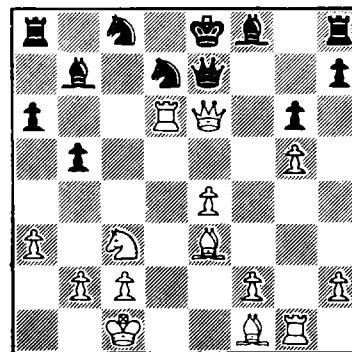
(d) Black's popular opening variation is already critical in view of White's combined threats of g6 and Ne6.

(e) If 12... Be7?, then 13 e5!, eyeing b6 and b5.

(f) "Going for the gusto!" White dynamites Black's pawn cover.

(g) And not 14... Be7? on account of 15 Bb5!

(h) Or 15... Nc4 16 Bc4 bc 17 Rgd1 Qe6 18 Re6 Be7 19 Nd5 Bd5 20 ed Kf7 21 Rd4.



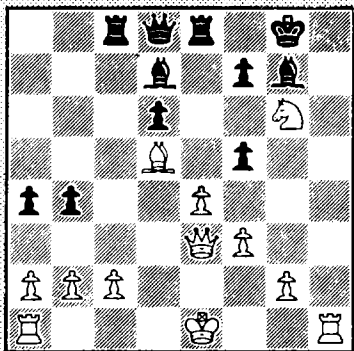
(i) Alternatives are 16... Bd5? 17 Qd5 Qd6 18 Qa8 Qb8 19 Qc6! and 16... Nd6!? 17 Ne7 Be7 18 Bh3. With some effort White can keep Black's pieces tied to his king.

(j) White intended to answer 17... Kd8 with 18 Nf6!?

(k) Black's deflector shields are down and he is about to hand away everything under the impending threats on his king.

(l) "Goodbye, Mr. Bond!"

White: David Strauss (2408). Black: Nick deFirmian (2422). CalChess Masters' Open, U.C. Berkeley, Jan. 12, 1979. Sicilian Defense



Position after Black's 19th move

1 Nf3	c5	28 Rg5!	Rc2
2 e4	Nc6	29 Kd3	Rc5
3 d4	cd	30 Rb2	gf
4 Nd4	Nf6	31 Nf4!(h)	Bb5
5 Nc3	d6	32 Ke3	Rc3
6 Bc4	Bd7	33 Kf2	Kf8
7 Bb3	g6	34 Rb4	Bh6
8 f3	Nd4	35 Rf5	Bd7
9 Qd4	Bg7	36 Rf6	Kg7
10 Bg5	0-0	37 Nh5	Kh7
11 Qe3	b5!	38 Rf7	Kg6
12 h4	a5	39 Rd7	Be3
13 h5?(a)	a4	40 Kg3	Kh5(!)
14 Bf6	ef	41 Rb3	f2
15 Bd5	b4	42 Rh7	Kg6
16 Ne2	Rc8	43 Rh1	Rb3
17 hg	hg	44 ab	Kf5
18 Nf4	f5!	45 Kg2	Ke4
19 Ng6	Re8(b)	46 Rd1	Bc5
20 Nf4(c)	Qg5	47 Kf1	Ke5
21 Rh5!(d)	Qg3	48 Ke2	Ke4
22 Kd2	a3	49 Kf1	Ke5
23 Ne2	ab	50 Kg2	Ke4
24 Rb1!(e)	Qe5	51 Kg3	Bd4!
25 g4	Qd5!(f)	52 b4	Kd5
26 ed	Re3?(g)	53 Drawn (!)	
27 Ke3	fg		

(Notes by USCF master Nick deFirmian)

(a) Looks strong, but Black gets the edge. About equal is 13 a4.

(b) White has gotten what he wanted, but he is now quite lost!

(c) If 20 0-0, then 20... Qf6 21 Nf4 Qb2 22 Rb1 Bd4!, winning a piece.

(d) And not 21 0-0 because of 21... Qf6 22 c3 (or 22 Nd3 Bb5) bc 23 Nh5 cb 24 Kb1 Rc1! On 21 0-0, instead, both 21... Rc2 and 21... Bb2 are strong.

(e) After 24 Rb1? Bc3, and the pawn queens, or worse.

(f) Avoiding 25... Ba4? 26 Bf7!

(g) Black now has a winning game, but he must play 26... Rc2 27 Kc2 and only then 27... Re3 in order to win it.

(h) White has achieved slightly better of a drawn position at this point. The next nine moves were made in time pressure; however, no major mistakes were made.

(i) Time pressure is over. Amazingly enough, there is no win here for White. The black pawn is too strong.

(j) On 53 b5 Black overtakes the pawn by 53... Kc5, and with the white king on g3 instead of g2, 54 Rd4 cannot be played.

★ ★ ★ ★ ★ ★

GAMBIT

GAME STORES

browse among our many chess books

CHESS CLOCKS, WOODEN & PLASTIC SETS, FLAT & ROLL-UP BOARDS, CHESS-PLAYING MICROCOMPUTERS, THE LATEST IN CHESS BOOKS AND MANY OTHER KINDS OF GAMES.

685 MARKET STREET, SAN FRANCISCO, 94105 543-9645

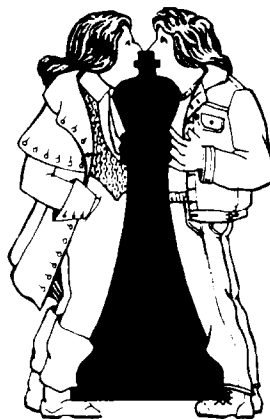
*

2508 TELEGRAPH (near Dwight) BERKELEY · 94704 · 415-848-8018

★ ★ ★ ★ ★ ★

CHESS ETCHINGS

AVAILABLE AT THESE GALLERIES



E. B. ROEMER

VENTANA GALLERY
224 El Paseo de Saratoga
San Jose, CA 95130
(408) 866-1944

VENTANA GALLERY
224 El Paseo de Saratoga
San Jose, CA 95130
(408) 866-1944

The artist may be contacted through GALLERY 9

Tournaments

"A PIECE OF THE ACTION" RESULTS

Evidently enticed by a cash prize fund of \$1,384 plus five trophies and \$100 in Gambit Game Store gift certificates, 116 chess players showed up for Alan Benson's "A Piece of the Action" tournament on the University of California Berkeley campus, Jan. 6-7. Mike Donald helped direct the four-round, USCF-rated, Swiss system event, sponsored by SUPERB. Complete results (in Solkoff tie-break order):

Master-Expert Division

1st, Paul Enright (2161), Oakland, 4-0, \$210 plus trophy; **2nd**, Thomas Weissbein (2142), Berkeley, 3½-½, \$146.50; **3rd-6th**, Gary Stearns (1906), Berkeley, Matthew Beelby (2190), Sacramento, Alan Wada (2100), Berkeley, and Rick Krewson (2027), Monterey, 3-1, \$18.37 each; **7th-8th**, Jay Whitehead (2331), San Francisco, and Dan Fukuma (1887), Sunnyvale, 2½-1½, \$15 Gambit Game Store gift certificate each.

Class A

1st-2nd, Sean Fitzpatrick (1858) (trophy), Hollywood, and Agnis Kaugars (1944), Berkeley, 3½-½, \$118 each; **3rd-4th**, Marvin Boykins (1936), San Francisco, and Donald Lieberman (1685), Santa Clara, 3-1, \$21 each; **5th-6th**, Pamela Ford (1855), San Francisco, and Dick Andrews (1899), Berkeley, 2½-1½, \$12.50 Gambit Game Store gift certificate each.

Class B

1st-3rd, Dave Cater (1793) (trophy), Sunnyvale, Charlie Brunton (1641), Vacaville, and Jon Wooley (1696), Hayward, 3½-½, \$83.94 each; **4th**, Eugene Lubarsky (1581), Berkeley, 3-1, \$20 Gambit Game Store gift certificate.

Class C

1st-3rd, Fredrik Sandegard (1301) (trophy), Danville, Steve Levine (1498), Santa Clara, and Stuart Saroff (1079), Fremont, 3½-½, \$73.50 each; **4th**, Carolyn Withgitt (1381), San Carlos, 3-1, \$15 Gambit Game Store gift certificate.

Class D-E-Unrated

1st, Richard Finacom (Unr.), Millbrae, 4-0, \$105 plus trophy; **2nd-7th**, Allen Wong (1332), San Jose, Howard Goss (1319), Berkeley, David Lockard (1116), Loomis, Roger Knoebber (0928), Comptche, Michael Buss (1271), Glidden, Idaho, and Tsung-Wen Chen (1123), Pinole, 3-1, \$13.11 each; **8th**, Robert Solovay (1215), Berkeley, 2½-1½, \$10 Gambit Game Store gift certificate.

WALNUT CREEK QUADS

Saleh Mujahed organized the tenth annual Walnut Creek Regional Quads, Jan. 13. Sponsored jointly by CalChess and the Walnut Creek Chess Club, the three-round, USCF-rated, round-robin tournament attracted 48 entrants competing in four-player sections for a \$576 prize fund. John Larkins directed the one-day event. Complete results:

Quad A: 1st-2nd, Mark Buckley (2147), Fair Oaks, and James MacFarland (2083), Sacramento, 2-1, \$6 each.

Quad B: 1st, David Wait (1805), Walnut Creek, 3-0, \$7; **2nd-4th**, Randall Feliciano (1839), San Francisco, Art Marathinson (1827), San Rafael, and John Smail (1819), Berkeley, 1-2, \$1.68 each.

Quad C: 1st, David Lewis (1791), Berkeley, 3-0, \$7; **2nd-4th**, Stewart Katz (1712), Fair Oaks, Jaroslav Skrenek (1607), Berkeley, and Jonathan Voth (1712), Stockton, 1-2, \$1.68 each.

Quad D: 1st-2nd, Leon Wait (1610), Walnut Creek, and Jon Wooley (1696), Hayward, 2½-½, \$6 each.

Quad E: 1st, Maurice Geraghty (1474), Concord, 3-0, \$7; **2nd-4th**, Stephen Knowles (1596), Clayton, Marc Kupper (1500), Walnut Creek, and Charles Vail (1585), Berkeley, 1-2, \$1.68 each.

Quad F: 1st, Robert Whitaker (1434), San Francisco, 2-1, \$7; **2nd-3rd**, Robert Howland (1412), Pittsburg, and Leonard Trottier (1444), El Cerrito, 1½-1½, \$2.50 each.

Quad G: 1st-2nd, William Courant (1397), Pittsburg, and Fred Geyzer (1393), Walnut Creek, 2½-½, \$6 each.

Quad H: 1st, Michael Brent (1355), Stockton, 2½-½, \$7; **2nd**, Frisco Del Rosario (1385), Hayward, 2-1, \$5.

Quad I: 1st, William Abel (1233), Concord, 2½-½, \$7; **2nd**, Stan Bumpus (Unr.), Castro Valley, 2-1, \$5.

Quad J: 1st-3rd, Bill Davis (1076), Petaluma, Nicholas Dodge (1185), Felton, and Gary Willson (1124), Kingsburg, 2-1, \$4 each.

Quad K: 1st, Robert Frank (1123), Sacramento, 3-0, \$7; **2nd**, Brian Wood (Unr.), Tracy, 2-1, \$5.

Quad L: 1st-2nd, Albert Hernandez (Unr.), Castle A.F.B., and James Weber (1040), San Francisco, 2½-½, \$6 each.

MONTEREY COAST CLASSIC

The Monterey Coast Classic Chess Tournament drew 58 players to the highly regarded Monterey Chess Center for a four-round, USCF-rated, Swiss system event directed by Ted and Naomi Yudacufski, Jan. 13-14. Of special interest was an old-time movie presentation featuring such chess greats as American champion Frank Marshall and world champion Jose Capablanca. Complete results:

OPEN DIVISION

1st-3rd, Michael Lucente (2045) (trophy), Ft. Ord, Martin Sullivan (2185), Hayward, and Mitchell Bedford (2050), Salinas, 3-1, \$47 each; **Best "A"**, Robert Raingruber (1898), Modesto, 1½-2½, trophy.

CLASS B

1st, Karel Zikan (1786), Pacific Grove, 4-0, \$90 plus trophy; **2nd-3rd**, Don Tiffin (1640), Modesto, and Jose Marcal (1636), Palo Alto, 3-1, \$35 each.

CLASS C

1st, Dave Whetzell (1558), San Jose, 3½-½, \$75 plus trophy; **2nd-4th**, Pedro Marcal (1520), Palo Alto, Alan Lovejoy (1493), Sand City, and Gary Jones (1447), Salinas, 3-1, \$20 each.

CLASS D-E

1st, Rey Castro (1373), San Jose, 3½-½, \$70 plus trophy; **2nd-3rd**, Charles Domac (1331), Pacific Grove, and Blake Fuessenich (1319), Monterey, 3-1, \$30 each.

UNRATED DIVISION

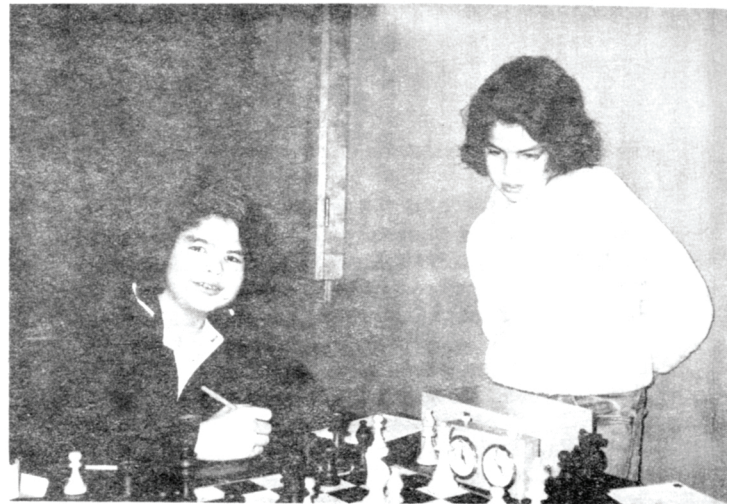
1st-2nd, Pancho Kinney (trophy), Monterey, and Karel Zikan, Jr., Pacific Grove, 3½-½, \$25 each.

□ □ □ □ □

White: John Smail (1819). Black: Randall Feliciano (1839). Walnut Creek Quads, Jan. 13, 1979. French Defense 1 e4 e6 2 d4 d5 3 e5 b6 4 c3 Qd7 5 Nf3 Be6 6 Be6 Ne6 7 Qd3 Nb8 8 O-O c5 9 Bf4 Nc6 10 Nbd2 h5 11 Rf1 Nh6 12 Nf1 Be7 13 a3 Na5 14 b4 c4 15 Qc2 Nb3 16 Re2 a5 17 N3d2 e4 18 Qd1 g5 19 Be3 h4 20 h3 O-O 21 Nh2 f6 22 ef Bf6 23 Ng4 Qg7 24 Nh6 Qh6 25 Qg4 Rde8 26 Nf3 Rhg8 27 Ree2 Kd7 28 Bc1 Bd8 29 Ne5 Kc7 30 Nf7 Qg6 31 Nd8 Nc1 32 Rc1 Kd8 33 Rce1 Kd7 34 Re5 Kd8 35 b5 Qf6 36 Qd1 Rgf8 37 f3 Qf4 38 Qe4 g4 39 fg Qf2 40 Kh1 Qg3 41 Qe7 Rf2 42 Qb6 Kd7 43 Qc6 Kd8 44 Rd5 ed 45 Re8mate.



Paul Enright (above) won a clear first place in the Master-Expert section of Alan Benson's "Piece of the Action" tournament. (Both photos by Shorman.)



Jose Marcal (seated) tied for second in Class B at the Monterey Coast Classic. Brother Pedro (standing) also tied for second--but in Class C.

EASTRIDGE OPEN

Fred Muollo and Ron Black directed 57 players in the Third Eastridge Open, held February 3-4 at the Eastridge Shopping Center Community Hall in San Jose. The 4-round USCF-rated Swiss, sponsored by the San Jose Chess Club and Eastridge, featured an \$850 prize fund, as well as a \$100 brilliancy prize donated by the Eastridge Merchants' Association--won by Borel Menas. Results:

Open/A Section: 1st - Gabe Sanchez (2028), $3\frac{1}{2}$ - $\frac{1}{2}$, \$100; 2nd-3rd - Borel Menas (2020) and Richard Koepcke (1963)--each with 3-1 for \$56.25.

"B/C" Section: 1st "B" - Rodolfo Maninang (1795), 4-0, \$100; 2nd "B" - Jose Marcal (1636), $3\frac{1}{2}$ - $\frac{1}{2}$, \$60; 3rd "B" - Dave Cater (1793), 3-1, \$40. 1st-2nd "C" - Steve Levine (1498) and Edward Brass (1486)--each with 3-1 for \$73; 3rd-4th "C" - Edmond Palmieri (1516) and Chuck Bradshaw (1464)--each with $2\frac{1}{2}$ - $1\frac{1}{2}$ for \$20.

"D/E/Unrated" Section: 1st "D" - William Vermilyea (1355), 3-1, \$69; 2nd "D" - Joseph Salazar (1287), $2\frac{1}{2}$ - $1\frac{1}{2}$, \$46; 3rd "D" - Russell Lindgren (1351), 2-2, \$23. 1st-2nd "E" - Elious Chapman (1074) and Lynn Bradley (950)--each with 2-2 for \$23. 1st unrated - Leoncio Orteza, 4-0, \$46; 2nd-3rd unrated - Sammie Lee Chism and Jim Walker--each with $3\frac{1}{2}$ - $\frac{1}{2}$ for \$11.50.

ARROYO GRANDE CHRISTMAS OPEN

Nick de Firmian captured first place at the Arroyo Grande Christmas Open held in the San Luis Obispo/Morro Bay area on December 16-17. Ken Kieselhorst was the director of the 30-player event. Results:

PEOPLE'S TOURNEY PRELIMINARY RESULTS

Eugene Meyer (2358), of Washington, D.C., won the February 17-19 People's Chess Tournament in Berkeley. Nick deFirmian (2422) was second. The highest-rated player, Jack Peters (2500), was unable to do better than a tie for 3rd-7th with Victor Frias (2410), Jay Whitehead (2331), Richard Lobo (2375), and Dennis Fritzinger (2296).

Complete results will appear in the April/May Chess Voice.

1st - Nick de Firmian (2422), 4-0, \$100.
2nd-6th - Loal Davis (2165), Rick Krewson (2027), Karel Zikan (1786), Joseph Anderson (1676), and Michael Long (1644)--each with 3-1 for \$21.60.

First "A" - Michael Schemm (1903), $2\frac{1}{2}$ - $1\frac{1}{2}$, \$20.

First "C" - Grant Copeland (1588), $2\frac{1}{2}$ - $1\frac{1}{2}$, \$17.

First "D" - Jerry Buxton (1342), $2\frac{1}{2}$ - $1\frac{1}{2}$, \$17.

First "E" - S. H. Clark (1003), 1-3, \$4.

First Unrated - (Tie) William Johnson and Eric Ridley--each with 1-3 for \$4.

NORTH BAY OPEN

The 3rd annual North Bay Open was held over the weekend of February 3-4 at the San Anselmo Parks and Recreation Office. The event attracted 56 players and was directed by Art Marthinsen on behalf of the Ross Valley Chess Club. Results:

1st - Eric Burris (2150), 4-0, \$150.

2nd-5th - Paul Enright (2161), Tony D'Aloisio (1974), Ray Musselman (1922), and Paul Hersh (1860)--each with $3\frac{1}{2}$ - $\frac{1}{2}$ for \$56.25.

1st-2nd "B" - Richard Canty (1678) and Charles Brunton (1641)--each with 3-1 for \$50.

1st-2nd "C" - Paul Hope (1595) and John Sinclair (1540)--each with 3-1 for \$50.

1st-4th "D/E/Unr" - Joe Klimmeck (1378), Ruben Faria (1262), Bill Davis (1076), and Dan Cahill (Unr)--each with 2-2 for \$25.

SACRAMENTO WINTER QUADS

The Capitol City Chess Club hosted the Sacramento Winter Quads on January 6. Twenty eight players attended the event, which was directed by Dave Mehler. In each of the seven quads, the winner received \$15.

Quad winners: Jim MacFarland (2083)--tied with Doug Anderson (1734), Stewart Katz (1699), David Mehler (1551), Chris Dypoldt (1424), Mike Farmon (1232), Robert Frank (1123), and E.G. Northam (1109).

SANTA ROSA J.C. QUADS

Sixteen players participated in the Santa Rosa J.C. Quads #1 held on January 27. The event was directed by Rob McCarter of the Santa Rosa Junior College Chess Players' Association. In each of the

four quads the first prize was \$20 and second was \$10.

Quad winners: Kon Grivainis (2091), Richard Canty (1690), Michael Rabbitt (1367--tied with Dennis Robles (1304) and Ruben Faria (1263), and Bill Davis (1076).

2nd place winners: Jeffry Dubjack (1770), Steve Minkin (1514), and Breen Mullins (unrated).

PHONE CHESS SEASON BEGINS

The 1979 season of the National Phone Chess League will begin on March 4. The Berkeley Riots, 1978 National Champions, will meet the Cleveland Data Systems team in the first round.

The National Phone Chess League is composed of teams representing various American cities which play inter-city matches by cross-country telephone.

The League is down to 11 teams this year, from 18 teams in 1978. (The four playoff teams from last year were given free entries, but the other seven teams were required to pay \$800 each to participate--most of this going for phone costs. Apparently, that cost is too steep for all but a few cities.)

Round 1 - March 4	Round 4 - April 22
Round 2 - March 18	Round 5 - May 6
Round 3 - April 8	Round 6 - June 3
Semi-finals - June 10	
Finals - June 24	

All Berkeley Riots games will be played on Sunday afternoons in the Senate Chambers on the first floor of Eshleman Hall on the Berkeley campus of the University of California. Starting times vary, but for western opponents play should begin at 1:30 PM; for eastern opponents, noon.

FREE SIMUL

TUESDAY, MARCH 13 at 7:30 PM

*

A simultaneous exhibition by Expert/Master

GARY PICKLER

Sponsored by the Oakland Chess Group, which meets every Tuesday at 1969 Park Boulevard in downtown Oakland. (South of Lake Merritt, near 19th Street.)

To reserve a place, contact John Larkins at 65306529.

TOURNAMENT BULLETINS

Play through the best games from major tourneys for 1½¢/game. Algebraic.

LONE PINE '79 (all games) - \$6.00

(Mailed 4th/Cl. at end of tourney)

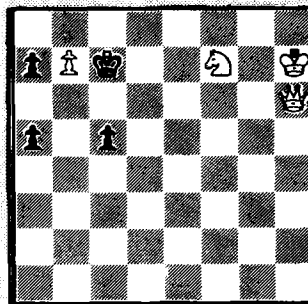
Same, mailed daily 1st/Cl - \$10.00

Save time, money. Subscribe to all bulletins - 900 games for \$15.

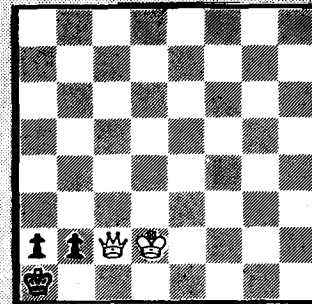
From Max Burkett, 1009 MacArthur (#6), Oakland, CA 94610. Postage paid.

KOLTY'S KORNER

by IM George Koltanowski,
World Blindfold Champion



Problem #7



Problem #8

Problem #7. White to play and mate in three. This is the competitive problem. Send your solution to: George Koltanowski, 1200 Gough St. (D-3), San Francisco, CA 94109 by March 10. Use a postcard and give your full name, address, zip code and phone number. The first two correct solutions encountered when all the cards are examined on the 10th will each receive an autographed chess book.

Problem #8. White to play and mate in four. This one is EASY.

* * *

Solution to Problem #5. (Composed by R. List.) 1 R-K2, B-N1; 2 R-K4, B-N6; 3 R-KN4, B-B7; 4 R-N2 and mate next move.

Solution to Problem #6. (Composed by Hans Martin.) 1 Q-KN4, P-KR3; 2 Q-N6, P-R4; 3 QxRP mate.

December-January prizewinners: John Sinclair of San Rafael and Alan Yaffe of San Francisco.

Back Issues

of most recent issues of CHESS VOICE are available from the editor for 50¢ a copy plus a postage and handling charge of 25¢ (1 copy), 50¢ (2 copies), or 75¢ (3 or more copies). Some issues (see below) are in short supply and thus more expensive. A complete price list from Vol. I, No. 1 is available for a self-addressed, stamped envelope.

WANTED--BACK ISSUES IN TRADE FOR EXTENSIONS OF CALCHESS MEMBERSHIP. For every clean copy of any of the following issues, your CalChess membership will be extended two months: Feb-Mar '76, any 1975, Feb-Mar '74, and any earlier issue--except Apr-May '73 and Oct-Nov '73.

Complete sets of 1976, 1977, and 1978 (6 issues each) are available for \$5 per set.

CHESS VOICE, 5804 Ocean View Dr., Oakland, CA 94618

CLASSIFIED ADS

REACH 1,000 CHESSPLAYERS for only 5¢/word. Use Chess Voice classified ads. (415) 653-6529.

HAM RADIO OPERATOR needed for radio match between a Dutch club and a Bay Area team. Contact: Kenn Fong, (415) 834-1576.

SUNDAY · CRUNCH ··· Apr. 1 & May 13

Introducing Chess at affordable prices or for those who do not or can not find the time to spend on a full weekend tourney. The Sunday Crunch is brought to you by: an act of G-d, stamped-ing horses, a grieved Ork, or perhaps but not in the least your local friendly neighborhood Chess association. Whatever the reason, please attend; your special ability is needed.

Site: Centennial Hall Room #7, 22292 Foothill Blvd., Hayward CA.

Dates: Quad #1 April 1, Quad #2 May 13

All entry fees are \$5 in advance (rec'd by Fri before) \$7 at site. Send check or money order payable to: Peace of Mind Chess Assn. P.O. Box 27003 San Francisco, CA 94127.

Note: Tournament Director - Jeffrey W. Dubjack
Assistant Tournament Director - Sandra Koppel

Prizes: Trophy to 1st in each 4 man section + free entry into the May 13th Quad.

Registration: 8-9:30 AM. TC 40/90, Rounds: 10-2-6.

Memberships Required: USCF and CAL CHESS. (both avail. at site).

APRIL 21st and 22nd
1st Annual

APRIL SHOWERS

MAY 19th and 20th
3rd Annual

MAY DAY TOURNAMENT

ALL DETAILS APPLY TO BOTH TOURNAMENTS--EXCEPT WHERE SPECIFIED

Location: Student Union Building, 4th floor, University of California (Berkeley) campus.

Format: USCF-rated 4-round Swiss System in 5 sections. Saturday: Rd 1 at 11am, Rd 2 at 5 pm; Sunday: Rd 3 at 10am, Rd 4 at 4 pm.

Prizes: \$1,300 in cash prizes plus \$100 in gift certificates plus trophies. (Based on 105 paid entries.)

		1st	2nd	3rd	4th
Master/Expert . . .	(40/2)	\$200	\$140	\$70	\$30
Class "A"	(40/2)	\$150	\$75	\$40	\$25
Class "B"	(45/2)	\$135	\$70	\$35	\$20
Class "C"	(45/2)	\$120	\$60	\$30	\$15
Classes "D/E/UNR" (50/2)		\$100	\$50	\$25	\$10

Registration: April Showers: April 21st, 8:30-10 am. May Day: May 19th, 8:30-10 am.

Entry Fees: \$20 per tournament if mailed by April 17th (April Showers) and by May 15th (May Day). UC (Berkeley) students and faculty--\$18. Entries \$3 more at site.

Membership required: (1) USCF. (2) CalChess (Northern Calif. Chess Assoc.): \$6 adults, \$4 juniors under 18, \$2 juniors under 16 w/o subscription to Chess Voice. (CalChess not required for southern California and out-of-state residents.)

Ten % off of total of USCF + CalChess + entry fee, if this is your first tournament. Free entry to FIDE-titled players, USCF Senior Masters and women.

Entries and inquires: SUPERB/U.C. Berkeley Campus Chess Club Director Alan Benson, c/o SUPERB, 304 Eshleman Hall, U.C. Berkeley, Berkeley, CA 94720. Telephones: SUPERB (415) 642-7477 and home (415) 843-0661.

Make all checks/money orders payable to: Alan Benson (Chess Acc't)



Sponsored by



COMING TOURNAMENTS

ZIP CODES

938-51; 954-61

**USCF NORTHERN CALIFORNIA
TOURNAMENT CLEARINGHOUSE**

JOHN H. LARKINS
EDITOR, CHESS VOICE
5804 OCEAN VIEW DRIVE
OAKLAND, CALIF. 94618

Keys to Symbols

- (27) - Dates in parentheses are tentative.
(X) - The column of capital letters at the right refers to the list of tournament organizers. (These are mail-addresses, not tournament sites.)
/p/ - See advertisement on the indicated page.
/Fly/ - See flyer inserted in the centerfold of this issue.
CAPS - Tournament title in capital letters indicates that CalChess membership is required.



MARCH

- 3 Sunnyvale - Santa Clara H.S. Championships (U)
10-11 San Francisco - JEREMY'S REVENGE (I)
10-11 Sacramento - Sacramento Scholastic Champ. (T)
17 Monterey - St. Patrick's Day Quads (Y)
17-18 Sunnyvale - Northern California High School Qualifier (CalChess) (N)
24 Hayward - Hayward Quads (R)
24-25 San Jose - Spring '79 (San Jose State)/Fly/(S)
25 (through April 4) Lone Pine - Louis Statham Masters-Plus (-)
31-1 Rohnert Park - Rohnert Park Open (F)

APRIL

- 1 Hayward - SUNDAY CRUNCH QUADS /p166/ (I)
7-8 San Francisco - S.F. CLASS CHAMPIONSHIPS (I)
7-8 ~~Santa Clara City Classic~~ (cancelled) (U)
14-15 Sunnyvale - LERA PENINSULA OPEN /Fly/ (H)
21-22 UC Berkeley - APRIL SHOWERS /p166/ (B)
28-29 San Jose - CALCHESS TEAM TOURNEY /Fly/ (J)

MAY

- (5-6) Bay Area Tournament (tentative) (I)
5-6 Sacramento - Sacramento Championship (T)
11-13 San Francisco - CAPPS MEMORIAL (M)
13 Hayward - SUNDAY CRUNCH QUADS (I)
19-20 UC Berkeley - MAY DAY TOURNEY (B)
26-28 Sunnyvale - LERA MEMORIAL DAY TOURNEY (H)

JUNE

- 1-3 San Francisco - Stamer Memorial (M)
(9-10) San Jose - Santa Clara Open (tentative) (S)
16-17 UC Berkeley - JUNE AMATEUR (B)
23-24 Monterey - Monterey International (Y)
23-24 San Francisco - BOATHOUSE BLAST-OFF (I)
30-1 Fremont - Fremont Open (tentative) (P)

JULY

- 7-8 San Francisco - GOLDEN GATE TOURNAMENT (G)
15 Berkeley YMCA - 6th Berkeley Sunday Quads (L)
21-22 Saratoga - Paul Masson (tentative)
29-9 Chicago - U. S. Open

AUGUST

- 11-12 San Francisco - Summer Open (I)
18-19 Hayward - Hayward Festival (R)

SEPTEMBER

- 1-3 UC Berkeley - LABOR DAY CHAMPIONSHIPS (B)
15-16 San Francisco - UNNAMED SWISS (I)
29-30 Sunnyvale - LERA SUNNYVALE CLASS CHAMPS. (H)

OCTOBER

- 6 (National Chess Day) (-)
6-7 San Francisco - RETURN OF MELVIN TOAST (I)

NOVEMBER

- 9-11 San Francisco - CAPPS MEMORIAL (M)
17 Santa Rosa - ROYAL QUADS (tentative) (B)
24-25 Sunnyvale - LERA THANKSGIVING TOURNAMENT (H)

DECEMBER

- 22-23 San Francisco - CHRISTMAS TOURNEY (I)

JANUARY 1980

- 5-6 San Francisco - CAPACITY OPEN & QUADS (I)
12-13 Walnut Creek - WALNUT CREEK QUADS (L)

Tournament Organizers

- A - Tom Boyd, 1501 Detroit Ave. (#20), Concord, CA 94520
B - Alan Benson (UC Campus Chess Club), 2420 Atherton St. (#1) Berkeley, CA 94704. (415) 843-0661.
C - Max Burkett (California Chess Bulletins), 1009 MacArthur Blvd, Oakland, CA 94610. (415) 832-8247.
D - Rob McCarter (Santa Rosa Chess Club), 2864 Bady Road, Santa Rosa, CA 95404.
E - Dick Rowe (Chico Chess Club), 2520 Alamo Ave. (Apt. B), Chico, CA 95926.
F - Clement Falbo (Santa Rosa Chess Club), 5437 Alta Monte Dr., Santa Rosa, CA 95404.
G - Mike Goodall, 461 Peachstone Terrace, San Rafael, CA 94903. (415) 479-7489.
H - Jim Hurt (LERA Chess Club), PO Box 60451, Sunnyvale, CA 94088.
I - Jeffrey Dubjack, PO Box 27003, San Francisco, CA 94127
J - Fred Muollo (San Jose Chess Club), 5725 Calmor Ave. (#3), San Jose, CA 95123.
K - George Koltanowski, 1200 Gough St. (Apt. D3), San Francisco, CA 94109.
L - John Larkins (Berkeley Chess Club), 5804 Ocean View Drive, Oakland, CA 94618. (415) 653-6529.
M - Raymond Conway (Mechanics' Institute Chess Club), 57 Post St., (#407), San Francisco, CA 94104. (415) 421-2258.
N - Bryce Perry (Palo Alto Chess Club), 826 Richardson Ct., Palo Alto, CA 94303.
O - Art Marthinsen (Ross Valley Chess Club), #3 Locksly Lane, San Rafael, CA 94901.
P - Hans Poschmann (Fremont Chess Club), 4621 Seneca Park Ave., Fremont, CA 94538. (415) 656-8505.
Q - Barney Patrick (Stockton Chess Club), 14636 Navajo Way, Manteca, CA 95336. (209) 239-2872.
R - Jerry Rogers (Hayward Chess Club), 19541 Times Ave., Hayward, CA 94541. (415) 276-5754.
S - Francisco Sierra (San Jose City Coll/ San Jose State), 663 Bucher Ave., Santa Clara, CA 95051 (408) 241-1447.
T - Dave Mehler (Capitol City Chess Club), 2700 32nd St. (#1), Sacramento, CA 95817.
U - John Sumares (Santa Clara Chess Club), 741 Pomeroy Ave., Santa Clara, CA 95051. (408) 296-5392.
W - Bruce Rough (Sacramento City Coll) c/o Student Activities, 3835 Freeport Blvd, Sacramento, CA 95822.
Y - Ted Yudacufski (Monterey Chess Center), PO Box 1308, Monterey, CA 93940. (408) 372-9790.
Z - Mark Sinz (Stanford Univ. Chess Club), PO Box 10632, Stanford, CA 94305.

Who plays chess in the Soviet Union? There are more than four million organized chessplayers, including over 1600 workers' clubs in factories plus millions of schoolchildren who play regularly. These players are trained by more than 250,000 coaches and 180,000 referees. Over five million students compete in children's and junior championships.

CHESSE VOICE

5804 OCEAN VIEW DRIVE
OAKLAND, CALIF. 94618

BULK RATE
U. S. POSTAGE
PAID
Oakland, Ca.
Permit # 3835

Changes of address. This magazine is not automatically forwarded--even when you notify the post office. You must also notify us.

Places To Play in Northern California

Bay Area: East Bay

BERKELEY CC - Fridays, John Larkins (415) 653-6529.
CAPT. ANCHOVY'S CC (San Leandro) - Rogers 276-5754.
DISCOVERY BAY CC (Byron) - Ed Marnell (415) 634-2721
FREMONT CC - Thursdays, Hans Poschmann, 656-8505.
OAKLAND CHESS GROUP - Tuesdays, John Larkins 653-6529
OAKLAND CHESS HOUSE - Daily, Mike Goudeau, 444-0751.
U.C. CAMPUS CC - Thursdays, Alan Benson. 843-0661.
WALNUT CREEK CC - Tuesdays, Saleh Mujahed, #5 Abbey Court, Walnut Creek, CA 94595.

Bay Area: South Bay

BURLINGAME-SAN MATEO CC - Thursdays, Will Goodwin, 413 Cornish Way, Belmont, CA 94002.
LERA CC - Thursdays, Jim Hurt, Box 60451, Sunnyvale, CA 94088.
PALO ALTO CC - Mon. & Thurs., Bryce Perry, 493-3833.
REDWOOD CITY CC - Mondays, Don Reid (415) 324-9472.
SAN JOSE CC - Mon. & Fri., Fred Muollo, 5725 Calmor Ave. (#3), San Jose, CA 95123.
SAN JOSE STATE UNIV CC - Fridays, (408) 241-1447.
SAN JOSE CITY COLL CC - Francisco Sierra 241-1447.
SANTA CLARA CC - Wed., John Sumares (408) 296-5392.
SANTA CLARA COUNTY CC - Sat., Francisco Sierra (408) 241-1447.

Bay Area: West Bay

COURTLAND CORNERS SPEED CHESS - Thur. (415) 647-9774.
DALY CITY CC - Tuesdays, Carl Barton (415) 731-9171.
MECHANICS INST. CC (S.F.), Ray Conway (415) 421-2258.

Bay Area: North Bay

FORESTVILLE CC - Mondays, D. Yugoff (707) 887-7536.
NAPA CC - Tues., B. Poindexter, 705 Seminary, Napa.
ROSS VALLEY CC (San Anselmo) - Tues., Art Marthinsen, #3 Locksly Lane, San Rafael, CA 94901.
SANTA ROSA CC - Fridays, Al Fender (707) 433-6058.
UKIAH CC - Mondays, Matt Sankovich (707) 462-8632.
VALLEJO CC - Fridays, G. Rasmussen, 1015 Henry Court, Vallejo, CA 94590.

Non-Bay Area

FURPLE KNIGHTS CC (Sacramento)- Dennis Crawford, 2042 24th St., Sacramento, CA, 95818.
CAPITOL CITY CC (Sacramento) - Ramona Sue Wilson, 2815 "K" St. (#7), Sacramento, CA 95816.
MODESTO CC - Tuesdays, phone 527-0657, R. Raingruber.
STOCKTON CC - Wednesdays, E. Patrick (209) 239-2872.
MENDOCINO CC - Tuesdays, Tony Miksak, Box 402, Mendocino, CA 95460.
CHICO CC - Tue. & Wed., write Chico CC, Chico, 95926.
MONTEREY CHESS CENTER - Daily, Yudacufski, 372-9790.
MORRO BAY CC - Thurs., Wm. Hutchinson, 248 Montana Way, Los Osos, CA 93402.
ATASCADERO CHESS CENTER - Kieselhorst (805) 466-0580.
CAISSA CC (San Luis Obispo) - George Lewis, 209 Longview Lane, San Luis Obispo, CA 93401.

Check your expiration date. The numbers in the upper right hand corner of your mailing label show the month and year your subscription expires.

* * *

U.C. CAMPUS CHESS CLUB

Meets Thursday nights (7 p.m.), Student Union, 4th floor, U.C. Berkeley campus.

* * * * *

The U.C. Berkeley Campus Chess Club is hosting the following events: April Showers Chess Tournament, April 21-22; May Day Chess Tourney, May 19-20; and the June Amateur, June 16-17.

The "Berkeley Riots" chess team will defend their 1978 National Phone Chess League title in the Senate Chambers (Eshleman Hall, 1st floor) on the U.C. Berkeley campus beginning March 4. Then again on March 18, April 8, 22, May 22 and June 3. Play begins between 12 noon and 1:30 pm.

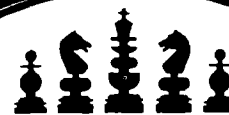
The Club will have five-minute chess tournaments during the Spring quarter with an entry fee of \$1 and 90% of the entries being returned in cash prizes.



Sponsored by



U.C. Berkeley Campus Chess Club Director Alan Benson, c/o SUPERB, 304 Eshleman Hall, U.C. Berkeley, CA 94720. Telephone (415) 843-0661.



BERKELEY CHESS CLUB

MEETS FRIDAYS 7-12 PM BERKELEY CENTRAL YMCA
2001 ALLSTON WAY, BERKELEY, CA 94704

LOOKING FOR NEW PEOPLE TO PLAY? An average BCC rated-tourney has about 60 participants --ranging from beginners to experts.

Adult membership--\$10 (Jrs--\$8) for 6 months

John Larkins, Director. (415) 653-6529