

CHESSES

By E. J. CLARKE

A detailed account of Dr. Alekhine's simultaneous exhibition at the Mechanics' Institute Chess Club Saturday night, May 11, was printed in The Chronicle of Monday, May 13. For the benefit of those who may not have seen it, results are summarized. The world's champion played forty-three boards. He won twenty-seven games, lost eight, while eight were drawn. Those winning from Alekhine were D. Vedensky, Berkeley (first to win); A. J. Fink, State champion; E. W. Gruer, ex-State champion (representing the Athens Club of Oakland); Charles Bagby, A. B. Stamer, S. Silvius, L. Goldstone and Dr. A. Epstein (last game to be finished). Drawn games: Dr. W. R. Lovegrove, Professor G. E. K. Branch, Henry Gross, J. Drullard, Leo Christianson, 16-year-old Mission High student (youngest player in lineup); Fred Byron, Mission High; G. Traum and Lawrence Rosenblatt. Play began at 8 p. m. and Dr. Alekhine finished the last of the forty-three games at about 2:30 a. m. Sunday.

The master scored the first win (also the shortest game) from young Arthur Dake of Portland in seventeen moves. Dake played splendidly against Alekhine at Los Angeles, losing by the odd pawn in sixty-five moves. At board No. 22 C. C. Holloway, gradually recovering sight from total blindness four years ago, fought the champion for fifty-one moves before giving up. At his side was Frank Stewart, totally blind, who recorded the game, move by move, on his Braille typewriter—quite a novelty!

At boards 13 and 14 the Epstein brothers—Drs. H. and A.—went after the champion from the first move. Five years ago when Alekhine was at the Institute playing thirty-two boards, it was Dr. Henry who won, while Dr. Abelson lost. This time it was the reverse. Youth will tell, eh? At board No. 4, against

former California Champion E. W. Gruer, the champion strangely allowed his queen to be trapped and at move 21 was forced to give up her majesty for a rook. Alekhine resigned seven moves later. In the game at Board 2 with State Champion A. T. Fink, the master's position judgment evidently was faulty, because after failing to lock up the position with a pawn, the Californian took the initiative, and after a vain sacrifice, the master found himself in a mating net from which he could not extricate himself. Charles Bagby, local expert, has the distinction of playing one of the best games against the champion, according to a review of the performance by Alekhine.

Compared to results in other cities of the champion's present tour, the showing of the Mechanics' Institute is far better. Brooklyn Institute played 52. Alekhine won 42, lost 4, drew 6; St. Louis, played 38, A. won 35, lost 1, drew 2; Milwaukee, played 40, A. won 36, lost 3, drew 1. Chicago (two exhibitions), played 46, A. won 42, lost 2, drew 2; Cincinnati, played 47, A. won 37, lost 5, drew 5; Denver, Alekhine made a clean sweep at 40 boards, no losses, no draws; Los Angeles, played 50, A. won 39, lost 5, drew 6.

So the question is being discussed: Was Dr. Alekhine "off his game," or is it true, as rumored, that we have an unusually strong group of chess players in San Francisco and the bay cities?

Friday afternoon, May 10, Dr. Alekhine played three games against teams in consultation. The master played at the rate of sixty moves an hour, while his opponents were allowed twenty moves an hour: Board 1—D. Vedensky, W. H. Smith, William C. Van Antwerp. Won by Alekhine, who at move 42 announced mate in seven moves. Board No. 2—A. J. Fink and G. E. K. Branch; won by Alekhine, 36 moves. Board No. 3—Henry Gross, C. Bagby, E. J. Clarke, draw; 64 moves.

* * * *

Following are some of the games from Dr. Alekhine's exhibition:

BOARD NO. 31

PHILIDOR

| | | | |
|-----------|--------|---------------|---------|
| Alekhine | Folger | Alekhine | Folger |
| White | Black | White | Black |
| 1 P-K4 | P-K4 | 16 QxPch | K-K2 |
| 2 S-KB3 | P-Q3 | 17 B-S5ch | B-B3 |
| 3 P-Q4 | B-S5 | 18 Castles(Q) | BxP |
| 4 B-QB4 | S-KB3 | 19 KR-K | BxBch |
| 5 PxP | SxP | 20 QxBch | K-Q2 |
| 6 BxPch | KxB | 21 Q-S7ch | R-B2 |
| 7 Q-Q5ch | B-K3 | 22 SxP! | RxQ |
| 8 QxS | B-K3 | 23 S-B4ch! | K-B |
| 9 S-B3 | P-Q4 | 24 RxQch | KR |
| 10 Q-B4ch | K-K | 25 SxBch | K-Q2 |
| 11 S-Q4 | QB-B | 26 SxR | S-B3 |
| 12 P-K6 | R-B | 27 S-B5 | R-K |
| 13 Q-S4 | B-B3 | 28 RxR | KxR |
| 14 Q-R5ch | P-S3 | 29 K-Q2 | Resigns |
| 15 QxRP | BxS | | |

* * * *

(Board No. 42)

QUEEN'S PAWN

| | | | |
|----------|---------|------------|---------|
| Alekhine | A. Dake | Alekhine | A. Dake |
| White | Black | White | Black |
| 1 P-Q4 | S-KB3 | 10 B-Q3 | QS-Q2 |
| 2 P-QB4 | P-KS3 | 11 Castles | P-S3 |
| 3 S-QB3 | P-Q4 | 12 KR-Q | QB-R3 |
| 4 P-K3 | B-S2 | 13 PxP!(a) | BxB |
| 5 S-B3 | Castles | 14 PxBP | B-K7(b) |
| 6 B-Q2 | P-QB3 | 15 SxB | S-S |
| 7 P-Q3 | B-S5(?) | 16 P-B7 | Q-K |
| 8 Q-S3 | B-B | 17 P-B8(Q) | Resigns |
| 9 P-QR4 | P-K3 | | |

(a) Beginning a neat combination.
(b) Black made this move immediately, overlooking SxB, and spoiling the force of Alekhine's sacrifice.

* * * *

(Board No. 9)

QUEEN'S PAWN

| | | | |
|----------|----------|------------|----------|
| Alekhine | Vedensky | Alekhine | Vedensky |
| White | Black | White | Black |
| 1 P-Q4 | S-KB3 | 13 BxP | S-S5 |
| 2 S-KB3 | P-K3 | 14 BxB | QxB |
| 3 P-QB4 | P-QS3 | 15 S-KB | P-KB4 |
| 4 B-KS5 | B-S2 | 16 B-KS | QxP |
| 5 QS-Q2 | B-Q3 | 17 BxP | PxP |
| 6 Q-B2 | P-K3 | 18 PxP | QR-B |
| 7 P-K3 | QS-Q2 | 19 Q-S3 | RxB(a) |
| 8 B-Q3 | Castles | 20 QxR | BxP |
| 9 P-KR4 | P-QB4 | 21 R-S | QxPch |
| 10 QR-Q | P-Q4 | 22 K-Q2 | QBxTch |
| 11 S-K5 | P-KR3 | 23 K-B | B-Q4 |
| 12 P-KB4 | SxS | 24 Resigns | |

(a) The winning move.

* * * *

(Board No. 4)

ENGLISH

| | | | | |
|----------|-------------|-------------|-------|-------------|
| Alekhine | E. W. Gruer | White | Black | E. W. Gruer |
| White | Black | White | Black | |
| 1 P-QB4 | P-K3 | 16 B-S5 | S-S3 | |
| 2 P-Q4 | P-Q4 | 17 QxRP | P-B5 | |
| 3 S-QB3 | S-KB3 | 18 BxS | PxB | |
| 4 S-B3 | P-B3 | 19 P-Q5?(a) | R-R | |
| 5 B-S5 | PxP | 20 RxP | Q-Q | |
| 6 P-K4 | B-K2 | 21 QxR | BxQ | |
| 7 BxP | P-QS4 | 22 R(B4)-Q4 | Q-Q3 | |

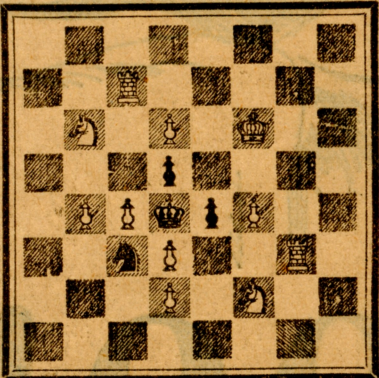
| | | | |
|------------|---------|-------------|------|
| 8 B-Q3 | P-S5 | 23 PxP | QxP |
| 9 S-K2 | B-S2 | 24 S-B5 | B-B4 |
| 10 Q-B2 | QS-Q2 | 25 R(Q4)-Q2 | BxKP |
| 11 Castles | R-QB | 26 S(B3)-Q4 | Q-K4 |
| 12 Q-R4 | P-QR4 | 27 R-K | KxB5 |
| 13 KR-Q | Castles | 28 SxB | Q-S4 |
| 14 S-S3 | Q-B2 | 29 Resigns | |
| 15 QR-QB | P-QB4 | | |

(a) Why not 19 BxP? If in reply SxB, 20 QxQ, RxQ; 21 P-S3. After losing Q for R, the master could well resign. Our champions are entitled to some respect. n'est-ce pas?

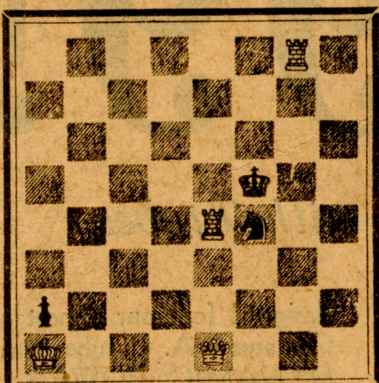
PROBLEMS

A. J. F.

No. 204—W. J. Baird



W(11) B(4)—Mate in Two
No. 205—Otto Wurzburg



W(4) B(3)—Mate in Three
Solutions: No. 202—Q-B3; No. 203—Q-KR; if PxP, Q-S2; if KxP, S-S2.
Solvers' list—R. W. King, Willits; A. R. Waters, Chico (problems received); C. Bergman, Hanford; J. E. E. Los Gatos; E. K. Ellsworth, Los Altos (who is the author of problem submitted?); R. E. Hummel, Oakland; N. Christensen, Oakland; R. Dumpace, Palo Alto; E. Hillman, Pasadena; H. Stuart, city; J. Norman, city; S. A. Reynolds, Chico (thanks for A. C. Co. letter).