

CHESS

By **E. J. CLARKE**

National Chess Federation Organized

After years of fruitless endeavor and agitation among chess clubs and individuals by altruistic enthusiasts in these United States, at last, thanks to a group of Chicago devotees of Caissa, and especially to Samuel D. Factor, the National Chess Federation has been formed. To date, twenty-three chess clubs have affiliated and if no other club gets in ahead of the Mechanics' Institute of San Francisco, the local club will become Chapter 24. Los Angeles Chess and Checkers Club was twenty-third on the roster. Officers of the N. C. F. are Maurice S. Kuhns, Chicago, president; Alrick H. Man, New York,; Leander J. McCormick, Chicago; J. E. Dittus, Chicago; Howard S. Hoit, New York, vice-presidents; Harry S. Heick, Chicago, treasurer; Samuel D. Factor, Chicago, secretary; A. J. Quigley, C. P. A., Chicago, auditor.

Among other purposes of the new organization are to encourage formation of new clubs; development of individual players and arranging annual tourmanents for amateurs, as well as experts, etc. The Western Chess Association, which for over a quarter of a century had conducted an annual Western championship tournament, has merged with and formed a nucleus for the new National Chess Federation.

It is too early to make any definite announcement, but at least it may be stated that negotiations have been under way for some time looking to a national tournament for San Francisco.

International Team Tournament

Teams from sixteen nations, each an affiliated unit of the International Chess Federation, will meet each other in bloodless warfare over the chessboard at London in connection with the annual meeting of the British Chess Federation, July 18 to 30. Unfortunately, our new chess federation came into existence too late to enter a team in this international gathering, in which chess strength as a nation rather than individual ability is the end in view. Besides Great Britain, the other nations entered are: Argentina, Austria, Belgium, Czechoslovakia, Denmark, Finland, France, Germany, Holland, Hungary, Italy, Spain, Sweden, Switzerland and Jugo-Slavia.

GAME NO. 28

IRREGULAR

The following game was played in the recent U. of C. Students vs. Faculty match. The knight sacrifice by Black at move 23 involves some serious threats, but White finds the right reply. If 27 . . . Q-B3, threatening rook, also R-S, the same move, 28 Q-B3, gets White out of danger.

R.	Prof.	R.	Prof.
Hultgren	Ryder	Hultgren	Ryder
(White)	(Black)	(White)	(Black)
1 P-Q4	S-KB3	19 B-B4	Q-K2
2 P-QB4	P-K3	20 R-S2	QR-K
3 S-KB3	B-S5ch	21 Q-Q3	P-S4
4 S-B3	S-K5	22 B-B	S-Q5
5 Q-B2	P-KB4	23 B-K3	SxPch
6 P-KS3	Castles	24 QxS	P-B5
7 B-S2	P-Q3	25 PxP	PxP
8 Castles	BxS	26 Q-S4ch	K-R
9 PxB	P-B4	27 B-Q2	R-B3
10 S-Q2	SxS	28 Q-B3	R-S3ch
11 BxS	S-B3	29 K-R	Q-K5
12 P-Q5	S-R4	30 QxQ	RxQ
13 PxP	BxP	31 R-S8ch	K-S2
14 B-Q5	Q-Q2	32 R-B	P-B6
15 QR-S	BxB	33 R-S7ch	K-S
16 PxB	P-QS4	34 RxQRP	R-B3
17 P-QR4	PxP	35 RxQRP	Resigns
18 P-QB4	S-S6		

GAME NO. 29

This game is from the New York tournament and is the worst of the bad games by Marshall. Next week, just to show how good Marshall can (or could) play, we shall give what we consider his finest game.

QUEEN'S GAMBIT DECLINED

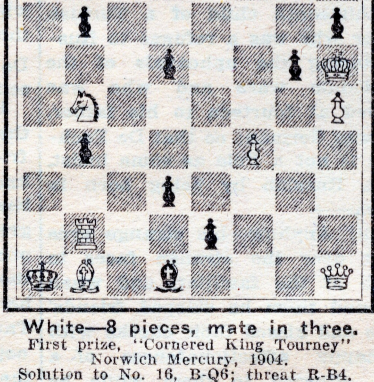
Marshall	Vidmar	Marshall	Vidmar
(White)	(Black)	(White)	(Black)
1 P-Q4	S-KB3	13 R-B	B-S5
2 S-KB3	P-Q4	14 R-B7	Q-Q
3 P-B4	P-B3	15 RxSP	SxSch
4 PxP	PxP	16 PxS	B-R6
5 S-B3	S-B3	17 R-K	S-K5
6 B-B4	P-K3	18 P-B4	Q-R5
7 P-K3	B-Q3	19 BxS	PxB
8 BxB	QxB	20 S-Q4	QR-B
9 B-Q3	Castles	21 R-S5	R-B8
10 Castles	P-K4	22 R-S5	RxQ
11 S-QS5	Q-K2	23 RxR	B-S5
12 PxP	SxP	24 R-QB	P-KR3
		Resigns	

PROBLEMS

A. J. FINK

PROBLEM NO. 17—By V. Marin

Black, 10 Pieces



White—8 pieces, mate in three.

First prize, "Cornered King Tourney"

Norwich Mercury, 1904.

Solution to No. 16, B-Q6; threat R-B4.

Variations—PxS, then QxP ch, etc. BxB, then Q-K5 ch, etc. RxP (B4) then R-B5, etc.

Solvers' list (No. 15)—J. M. C., Mt. Hebron; R. Dunipace, Palo Alto ("a little beauty; very amusing!"); J. D. K., Sacramento (also Forsyth position); M. C. M., city ("key move very obvious"); Berkowitz, Palo Alto ("very clever!"); W. L. Pedrick, Ferndale; B. H. Williams, San Rafael ("Quite ingenious"); J. E. E., Los Gatos. E. J. Falkner of Union City, N. J., sends us a beautiful problem, the nature of which we shall discuss in next week's column.

Address all communications to Chess Editor, The Chronicle.