

# CHESS

By **E. J. CLARKE**  
New York Tournament

With but a few rounds to go, Jose R. Capablanca has such a lead as to be practically certain of first prize. At this writing Alekhine, Nimzowitsch, Vidmar are closely bunched for the remaining big prizes. Spielmann and Marshall seem slated for fifth and sixth, respectively. Standing after the sixteenth round:

Player	Won	Lost
Capablanca .....	12	4
Alekhine .....	8½	3½
Nimzowitsch .....	8	8
Vidmar .....	8	8
Spielmann .....	7½	8½
Marshall .....	5	11

\* \* \* \*

"Back to the Books" was the slogan in the twelfth round:

Board 1—(Capablanca vs. Vidmar) Ruy Lopez; Board 2—(Marshall vs. Alekhine) French Defense; Board 3—(Nimzowitsch vs. Spielmann) Four Knights.

\* \* \* \*

The stage was set for the beautiful Philidor's mate (game 16, Alekhine vs. Capablanca, printed last week). But these masters! They see too much! Here is a "might-have-been": 30 . . . R-Q6 (instead of RxB; 31Q-B (forced) S-R6; 32 BxB (many fair players would fall for that); Q-S8ch; 33RxQ, and we have a nice specimen of the smothered mate, S-B7, checkmate.

\* \* \* \*

### U. of C. Chess Club Activities

The semi-annual match between the University of California Varsity and Faculty was played at the Faculty Club Thursday evening, March 10. The students defeated the professors by the close score of 4 to 3. The results on individual boards were:

Bd.	Varsity	Faculty
1	Hultgren .....1	Ryder .....0
2	Gross .....0	Branch .....1
3	Balston .....0	Gardiner .....1
4	Allen .....1	Haight .....0
5	Fisher .....1	Woodworth .....0
6	Braun .....1	Hopfield .....0
7	Bois .....0	Cheek .....1
Totals	.....4	Totals .....3

Students had white on odd numbered boards.

At the next regular meeting of the U. C. Chess Club, April 4, Professor G. E. K. Branch of the Faculty Club will give a simultaneous exhibition against the students in the men's clubrooms, Stephens Union. Last monthly meeting E. W. Gruer, California State champion, played against the students simultaneously. J. F. Smyth of the Athens Club, Oakland, also addressed the chess club members.

\* \* \* \*

### GAME NO. 17

#### SICILIAN

A lively game from the eleventh round, which began a queen's pawn, and by transposition resulted in a Sicilian. Marshall's attack seemed formidable, but Spielmann defended skillfully and drew with a pawn down.

Marshall (White)	Spielman (Black)	Marshall (White)	Spielman (Black)
1 P-Q4	P-K3	26 PxP	P-Q4
2 S-KB3	P-QB4	27 QR-K3	R-KS
3 P-K4	PxP	28 SxP	B-S4
4 SxP	S-KB3	29 QxB	RxQ
5 QS-B3	P-Q3	30 S-S6ch	RPxS
6 B-Q3	B-K2	31 RxQ	RxP
7 Castles	Castles	32 R-K8ch	RxR
8 B-K3	QS-Q2	33 RxRch	K-S2
9 Q-K2	P-QR3	34 R-QR8	P-Q5
10 P-B4	Q-B2	35 PxP	R-Q4
11 Q-B3	P-QS4	36 K-B2	RxP
12 QR-K	B-S2	37 RxP	R-Q7ch
13 Q-S3	P-S5	38 K-B3	P-B4
14 S-Q5	SxS(a)	39 P-KR4	K-R3
15 Pxs	BxP	40 R-R8	R-B7
16 P-B5	S-B3	41 P-R4	R-B6ch
17 B-R6	S-R4	42 K-B4	R-B5ch
18 Q-S4	B-B3	43 K-S3	R-B6ch
19 S-B3	K-R	44 K-R2	R-R6
20 QxB	PxB	45 P-QR5	K-R4
21 QxRP	Q-K2	46 R-R8ch	K-S5
22 B-K4	BxB	47 P-R5	PxP
23 RxB	P-QR4	48 R-R8	P-R5
24 KR-K	P-K4	49 P-R6	K-B5
25 P-B4	PxP(e.p.)	50 P-R7	Drawn

(a) Of course if Pxs, 15 S-B5, recovering piece.

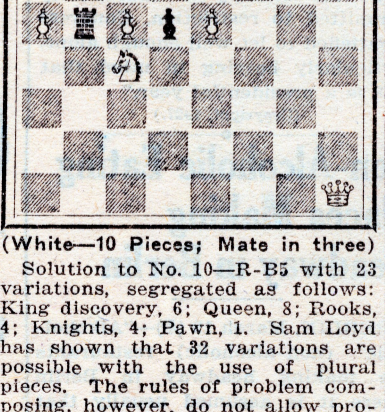
## PROBLEMS

A. J. FINK

### PROBLEM NO. 11

By R. B. Green, Council Bluffs, Ia.  
(Composed for the S. F. Chronicle)

(Black—8 Pieces)



(White—10 Pieces; Mate in three)

Solution to No. 10—R-B5 with 23 variations, segregated as follows: King discovery, 6; Queen, 8; Rooks, 4; Knights, 4; Pawn, 1. Sam Loyd has shown that 32 variations are possible with the use of plural pieces. The rules of problem composing, however, do not allow promoted pieces in the initial setting, the use of same being considered a minor form of unsoundness; so the position by Wainwright holds the record.

R. B. G., RxP and BxR "cooks" other positions.

Solutions to No. 9 received by C. L. A., San Jose; J. E. E., Los Gatos; M. C. Montecillo, city.

Address all communications to Chess Editor, The Chronicle.