

# CHESS

By E. J. CLARKE

A most welcome visitor to the Mechanics' Institute chess club last Tuesday was A. E. Wagner, an ex-president of the Chicago chess club, and who is due in that city Monday. Owing to the fact that there is a Kenwood country club as well as a Kenwood chess club in Chicago, the letter addressed to the latter organization in regard to a proposed telegraphic chess match for Washington's birthday, miscarried and was delivered to the country club. Finally a telegram cleared the air and the missent letter was returned. Mr. Wagner expressed himself as being greatly interested, and besides giving the correct address of the Chicago and Kenwood chess club, promised to do all in his power to expedite the match. He stated that February 22 was usually set aside for an annual city tourney, but that in view of the widespread interest a telegraph match between San Francisco and Chicago would create, he was confident that the Chicago organizations would join forces and accept the challenge of the Mechanics' Institute. Mr. Wagner also stated that at present Chicago was particularly strong at chess. Besides the presence there of several expert Russians, there are such well known players as Edward Lasker, who is negotiating with F. J. Marshall for a match for the United States championship; C. Factor and S. Chikowski, from Russia, and the Chicago players, Hahlbohm, Phillips, Bull, Mow, Wilcox, Nitchke and C. A. Wagner, a brother of the visitor, who is one of the leading players of the "western" city. Realizing that in order to maintain the prestige of the Mechanics' Institute in such a contest, Bernardo Smith, who has been appointed by President Eells to select a team for the match, is lining up the strongest available material. Besides the "regulars" in telegraphic matches with Portland and Los Angeles, it is thought probable that Mlotkowski and Borochow of the latter city will be asked to "sit in." San Francisco is felt to be up against a formidable antagonist and the presence in its lineup of a couple of players from its suburbs will work no hardship, it is contended. The match is made possible through the generous offer of McDonnell & Co., who have given the use of their leased wire for the holiday, as well as the use of their offices in each city. The match was conceived and negotiations with McDonnell & Co. carried out by J. F. Smyth, who previous to his coming to California, was prominent in the Brooklyn chess club. It is planned to play a 12-board match. Owing to limited accommodations, admission to the San Francisco end of the match—McDonnell & Co.'s Palace Hotel office—will be by card only.

\*\*\*\*\*

## Morphy's Skill in End Game

Lowenthal says of the following: "A perfect chess study in end-game play." It is the game referred to in last week's column in connection with the Mlotkowski-Metzke game from the California championship tourney. It is curious that both games were Evans' Gambits. The position is shown at White's (Morphy) thirty-sixth move, and is given first in Forsyth notation and then in the regulation manner:

Forsyth—3b 3r; 3p 1k p1; 3p 2p p1; B1 P1 p2; 5P2; 6P1; 7P; 4R 1K1.

White (Morphy)—8 pieces: K at KS. R at K. B at QS5, pawns at KR2, KS3, KB4, Q5, Q7.

Black (Salmon)—7 pieces: K at KB2, R at KR, B at Q, pawns at KS2, KS3, KB4, Q3.

The above position arose in a blindfold seance at Birmingham, England, 1858, during the anniversary meeting of the British Chess association. The American was awaiting word from the English champion, Howard Stanton, relative to Morphy's challenge for a world's championship match. On this occasion our hero contested eight games

against the strongest amateurs in England, winning six, drawing one and losing to Kipping, whose grandson, by the way, is at present a strong English player and problemist. The game proceeded:

|        |      |             |       |
|--------|------|-------------|-------|
| 1—R-K8 | R-B  | 8—K-S5      | R-S   |
| 2—K-B2 | P-S4 | 9—K-R6      | R-B   |
| 3—K-K3 | P-S5 | 10—K-S7     | R-S   |
| 4—K-Q3 | P-S4 | 11—K-R8     | B-S3  |
| 5—B-B6 | PxP  | 12—RxR      | KxR   |
| 6—PxP  | R-S  | 13—P queens | and   |
| 7—K-B4 | R-B  |             | wins. |

\* \* \* \* \*

The subjoined games are from the recent California championship tourney. Game No. 52 was played in the first round. No. 53 is from the tenth round. Dr. Lovegrove fell into an old trap with a slightly different prelude. In No. 54, also from the tenth round, the Fresno expert displays some of the skill and brilliancy which enabled him to win five straight games after a discouraging start.

## GAME No. 52

### HUNGARIAN

|                        |                       |                        |                       |
|------------------------|-----------------------|------------------------|-----------------------|
| S. Mlotkowski<br>white | G. Hallwegen<br>black | S. Mlotkowski<br>white | G. Hallwegen<br>black |
| 1—P-K4                 | P-K4                  | 18—B-B2                | B-K3                  |
| 2—S-KB3                | S-QB3                 | 19—P-B4                | B-Q2                  |
| 3—B-B4                 | B-K2                  | 20—P-B5                | S-B                   |
| 4—P-Q4                 | PxP                   | 21—R-K3                | BxP                   |
| 5—P-B3                 | S-B3                  | 22—BxB                 | R-Q3                  |
| 6—P-K5                 | S-K5(a)               | 23—R-S3ch              | S-S3                  |
| 7—B-Q5                 | S-S4                  | 24—P-KR4               | K-R                   |
| 8—SxS                  | BxS                   | 25—P-R5                | P-Q5                  |
| 9—Q-R5                 | Q-K2                  | 26—S-K4                | R-Q4                  |
| 10—QxB                 | PxP                   | 27—PxS                 | RxB                   |
| 11—QxP                 | QxPch                 | 28—P-S7ch              | K-S                   |
| 12—QxQ                 | SxQ                   | 29—R-KB                | RxR                   |
| 13—Castles             | Castles               | 30—KxR                 | P-R3                  |
| 14—SxP                 | P-B3                  | 31—SxPch               | K-B2                  |
| 15—B-S3                | P-Q4                  | 32—S-Q7                | R-KS                  |
| 16—B-R6                | R-Q                   | 33—R-B3ch              | K-K2                  |
| 17—KR-K                | S-S3                  | 34—S-B6                | Resigns               |

\* \* \* \* \*

### NOTE

(a) The veteran, Hallwegen, has an aversion to using "other men's brains," as he considers a study of openings. It is unfortunate, because here he loses a piece after six moves. Once out of the opening on even terms (a rarity!) and G. H. can hold his own with the best of them. But—the opening!!!

\* \* \* \* \*

## GAME No. 53

### QUEEN'S PAWN

|                          |                        |                          |                        |
|--------------------------|------------------------|--------------------------|------------------------|
| W. R. Lovegrove<br>white | S. Mlotkowski<br>black | W. R. Lovegrove<br>white | S. Mlotkowski<br>black |
| 1—P-Q4                   | P-Q4                   | 14—Castles               | Castles                |
| 2—S-KB3                  | P-K3                   | 15—P-B4                  | Q-B3                   |
| 3—P-B4                   | S-KB3                  | 16—P-B5                  | PxP                    |
| 4—S-B3                   | QS-Q2                  | 17—B-Q3                  | S-S3                   |
| 5—B-S5                   | B-S5                   | 18—P-Q5                  | B-Q2                   |
| 6—P-K3                   | P-B4                   | 19—R-B4                  | Q-K4                   |
| 7—P-OR3                  | BxSch                  | 20—R-B3                  | QxP                    |
| 8—PxP                    | Q-R4                   | 21—P-B4                  | Q-Q5ch                 |
| 9—Q-S3(?)                | S-K5                   | 22—K-R                   | QR-B                   |
| 10—R-B                   | BPxP                   | 23—QR-B                  | B-K3                   |
| 11—KPxP                  | SxB                    | 24—Q-S                   | SxP                    |
| 12—SxS                   | PxP                    | 25—QxSP                  | S-K4                   |
| 13—BxP                   | QxS                    | 26—Resigns               |                        |

\* \* \* \* \*

## GAME No. 54

### QUEEN'S GAMBIT

|                    |                     |                    |                     |
|--------------------|---------------------|--------------------|---------------------|
| W. Metzke<br>white | S. Swanson<br>black | W. Metzke<br>white | S. Swanson<br>black |
| 1—P-Q4             | P-Q4                | 15—SxBP            | Q-Q2                |
| 2—S-KB3            | P-QB3               | 16—R-S7!           | Q-B3                |
| 3—P-B4             | PxP(a)              | 17—RxKSch          | BxR                 |
| 4—P-K3             | P-QS4               | 18—SxR             | S-R3                |
| 5—P-QR4            | P-K3                | 19—Q-R5ch          | K-Q2                |
| 6—B-Q2!(b)         | S-S2                | 20—S-B7            | B-B3                |
| 7—P-QS3            | PxSP                | 21—S-K5ch          | BxS                 |
| 8—PxP              | P-S7                | 22—QxB             | R-KS                |
| 9—R-R2             | PxP                 | 23—R-B             | Q-R5                |
| 10—BxPch           | B-B3                | 24—S-B3            | Q-S5                |
| 11—RxP             | RxB                 | 25—S-K4            | Q-R6                |
| 12—RxR             | B-Q3                | 26—Q-S5ch          | K-K2                |
| 13—Castles         | S-K2                | 27—Q-S7ch          | and mates.          |
| 14—S-S5            | P-KR3(c)            |                    |                     |

\* \* \* \* \*

### NOTE

(a) In spite of black's experience with Gruer in a preceding round, he again accepted the gambit and tried to maintain the pawn. However, it remained for Metzke to completely demonstrate the fallacy of such a procedure.

(b) Metzke analyzed the above game thoroughly and found this not a necessary to prevent a bishop check by black with a possibility of two passed pawns in some variations.

(c) Swanson did not relish a knight standing in such a threatening position; but he should have castled. His troubles now begin. For the rest, Metzke finishes the game in martyrly style. Of course, of 15½ KxS, then 16 Q-B3ch and wins the rook.

## TRIO TO PLAY

Rodion Mendelevich, violinist; Otto King, cellist, and Sollie Heilbronner, pianist, will play the following program this evening in the Clift hotel from 6:30 to 9:30 o'clock:

- March, "King Sol".....Glogen
- Waltz, "Puppchen".....Gilbert
- "Just a Little Love Song".....Cooper
- "Over the Hill".....Rubens
- Selections from "The Mikado".....Sullivan
- Menuetto all'antico.....Kargano
- "Another Waltz".....Hulten
- "Listen to Me".....Sanders
- "Scarf Dance".....Chamizade
- Novallette, "Fi-Fi".....McPherran
- "Glow, Little Lantern of Love".....Fisher
- Three dances from "Nell Gymn".....Gernan
- "Ave Maria".....Bach-Gounod
- Selections from.....Mendelssohn
- "Serenade".....Rubinstein
- "Liebestraum".....Liszt
- Suite, "In the Forest".....Godard

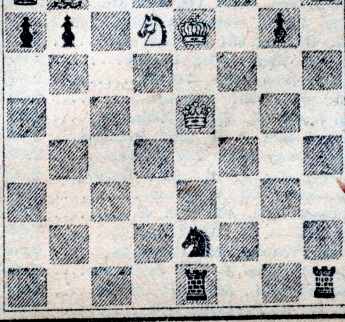
# Problems

A. J. F.

PROBLEM NO. 60

By E. VOELLMY

Black (seven pieces).



White (five pieces).

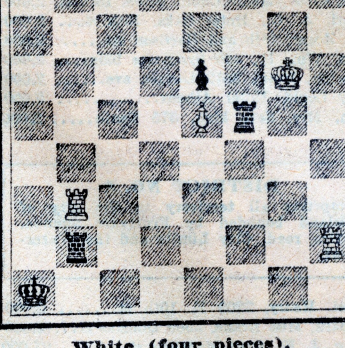
White plays and mates in two.

\* \* \* \*

PROBLEM NO. 61

By F. GYGLI

Black (four pieces).



White (four pieces).

White plays and wins the game.

\* \* \* \*

Our problems today are selected from Alain C. White's annual addition to chess problem literature, a book entitled "Alpine Chess," compositions by composers of that little country in the heart of the Old World, Switzerland. The two-mover is a delightful tit-bit. Voellmy is a strong player, and as chief editor of the Schweizerische Schachzeitung, he wrote several analytical articles about the middle-game. By way of variety we give an end-game study, by Gygli, the youngest Swiss composer. The key move is R(Kt3)xR and of course the idea hinges on white avoiding the black rook checks. Black making the best moves can prolong the game for 26 moves, white's 26th move being K-h6, at last! Finely conceived!

In passing over the second rank the king is seeking to reach the saving square h6, but the second rank must only be first played upon, when Black's move KxR can be answered by a discovered check that wins back the black rook. Entering the second rank after a rook check on c3 is on the contrary fatal.

\* \* \* \*

Solution to last week's position.

1.P-Q8 promoting to a bishop, followed by 2.P-K8 equals a knight, double check and mate. K should be at R3 and not at R4, as shown, on account of dual solution.

Solvers List (previous week included):

- H. Hall, Merced.
- J. Fulton, Sacramento.
- F. H. Mehlhorn, city.
- B. Chavalas, Oakland.
- S. L. Jackson, Dyerville.
- J. Ford, city.
- A. W. Mock, Chowchilla.
- F. Santallier, Oakland.
- C. W. Updyke, Dinuba.
- "A. J. H.," Palo Alto.
- "Floy," Spokane, Wash.
- "A. M. T.," San Mateo.
- E. S. Van Camp, city.
- "Floy," Fresno.
- E. Linares Jr., Santa Clara.
- H. A. Burk, Tonopah, Nev.
- R. R. Reynolds, city.
- Dr. M. Pereyra, city.
- J. L. Buzolich, Rio Vista.
- E. L. Church, Ahwahnee.

\* \* \* \*

## CORRESPONDENCE

J. Fulton and others: No. 56 has two keys as several solvers claim.

C. W. Updyke: Position not up to standard.

"Floy," Terms and Themes of Chess Problems, best.

"Chestnut" — Double dis-ch., not new.

Letter addressed and postmarked Spokane, signed "Floy," is this correct?