

CHESS

By E. J. CLARKE

Alexander Alekhine began well in his match for the world's championship by defeating Capablanca in the first game in forty-three moves. The second game resulted in a draw, after nineteen moves.

* * * *

The second team of the Mechanics' Institute Chess Club, 57 Post street, would like to arrange matches with chess clubs or groups about the bay region. Address George Goehler for details.

* * * *

H. D. Austin of Vallejo has organized a chess club in that city consisting of about twenty members. State Champion E. W. Gruer has been invited to give a simultaneous exhibition in the near future.

* * * *

It is understood that had Abraham Kupchik of New York city won the major tournament at Kalamazoo, Mich. (it was considered a foregone conclusion) he would have challenged Marshall for the United States championship. Whether Kupchik will still be able to secure backing remains to be seen.

* * * *

GAME NO. 58

The Chronicle chess column has a good friend in Stasch Mlotkowski, now a resident of the town made famous by Walt Whitman. "Mlot" writes concerning his score in the recent N. C. F. tournament: "I lost both my games after having had a long session the day before—to Whitaker after playing Kupchik a 104-move draw; and to Reschewsky (against whom I had a big advantage) after a 60-move draw with Factor. I inclose my game with Herman Steiner. It was called the most complicated game in tourney. He introduced a new move against me on his fifth turn (P-B3). Look, for instance, at the possibilities in 13 P-K6 for White. Also 23 SxR and 23 R-QB for White.

QUEEN'S GAMBIT DECLINED

Steiner (White)	Mlotkowski (Black)	Steiner (White)	Mlotkowski (Black)
1 P-Q4	P-Q4	22 S-K5	R-QB
2 P-QB4	P-K3	23 B-Q2	R-KB4
3 S-QB3	S-KB3	24 SxB	Q-Q3
4 B-S5	QS-Q2	25 Q-QR4	S-B3
5 P-B3	P-B3	26 Castles	QxS
6 P-K4	Q-R4	27 QR-B	QR-KB
7 BPxP	KPxP	28 P-B4	Q-Q3
8 P-K5	KS-S	29 P-QS4	P-QR3
9 B-Q3	P-QB4	30 B-B3	P-Q5
10 B-S5	PxP	31 KR-Q	B-Q4
11 QxP	B-QS5	32 B-Q2	P-K4
12 BxSch	BxB	33 PxP	SxP
13 B-Q2	B-B3	34 Q-S3	K-R
14 KS-K2	S-K2	35 B-B4	Q-Q2
15 Q-S4	Castles	36 B-S3	S-B3
16 P-QR3	BxS	37 P-QR4	R(Q4)-KB4
17 BxB	Q-R5	38 P-S5	PxP
18 S-Q4	B-Q2	39 PxP	S-R4
19 P-K6	PxP	40 Q-S4	QxP
20 P-QS3	Q-R3	41 QxP(?)	S-S6
21 S-B6	R-B2	42 Resigns	

* * * *

GAME NO. 59

Another game from the N. C. F. meeting at Kalamazoo. Sammy Reschewsky (now a high school student in Detroit), neatly takes advantage of Palmer's premature advance of his queen's side pawns.

QUEEN'S PAWN

Reschewsky (White)	Palmer (Black)	Reschewsky (White)	Palmer (Black)
1 P-Q4	P-K3	11 P-QR4!	PxQP
2 S-KB3	P-Q4	12 SxQP	P-S5
3 P-B4	P-QB3	13 S-K4	S-K4
4 P-K3	S-KB3	14 S-B6	Q-B2
5 S-B3	QS-Q2	15 SxBch	QxS
6 Q-B2	B-Q3	16 SxS	B-S2
7 B-Q3	PxP	17 S-B4	Q-Q4
8 BxBP	P-QS4	18 P-K4	Q-Q5
9 B-Q3	P-QR3	19 B-K3	Resigns
10 B-Q2	P-B4		

* * * *

PROBLEMS

By A. J. F.

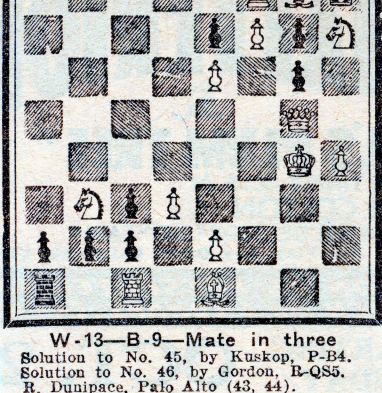
A problem to solve makes the brain revolve,
Whether hard or an easy affair;
But often they make the cranium ache
Before finding the piece and the square.

So, with this in mind, I think you will find
The problem today very trying;
The mates and the play, and key to
the fray
Are all apt to prove mystifying.

PROBLEM NO. 47

By Ua Tane

(J. F. Stimson, Moorea, Society Islands.)



W-13—B-9—Mate in three

Solution to No. 45, by Kuskop, P-B4.
Solution to No. 46, by Gordon, B-QS5.
R. Dunipace, Palo Alto (43, 44).
F. H. Mehlhorn, Santa Clara (43, 44).
Q. M. Spencer, Vallejo (43, 44).
R. B. Miller, Colfax (43).
(White mates by QxB (R2) in answer to BxS in No. 41.)